



RACE AND SOCIAL JUSTICE INITIATIVE TOOLKIT

Seattle City Light Review Panel

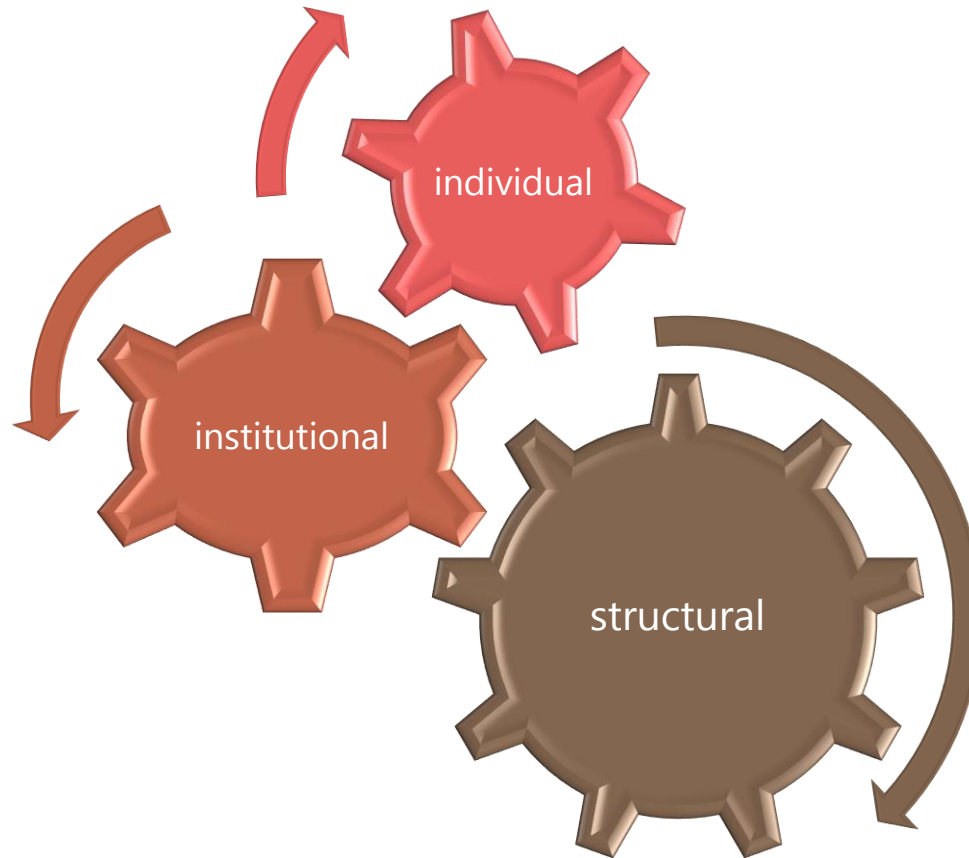
Shanna Crutchfield, RSJI Program Manager

February 16, 2016



RACE AND SOCIAL JUSTICE INITIATIVE

RSJI takes a comprehensive approach to eliminate racial inequity



EQUALITY AND EQUITY



RSJI OPPORTUNITY AREAS AND CONCERNS

Customer Service

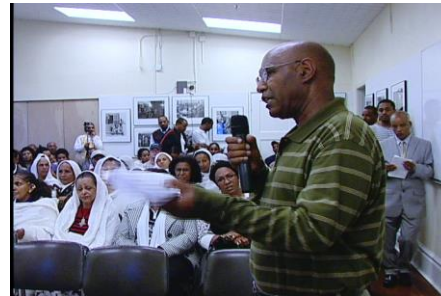


Community Development



Contracting Equity

Public Engagement



Service Equity



Criminal Justice

Jobs/Workforce



Environment



Education

RSJI AND “THE STREAM ANALYSIS”



ADVANCED METERING “OPT OUT POLICY”

- **Upstream:** Utility policies include the tools to affect systemic change.
- **Midstream:** Utility employees consciously make use of RSJI tools to mitigate institutional inequity in support of opportunity and access.
- **Downstream:** Act to change policies that include behaviors or conditions reinforcing disparities.



CITY LIGHT

OUR VISION

To set the standard—to deliver the best customer service experience of any utility in the nation.

OUR MISSION

Seattle City Light is dedicated to exceeding our customers' expectations in producing and delivering environmentally responsible, safe, low-cost and reliable power.

OUR VALUES

Excellence, Accountability, Trust and Stewardship.

