



ADVANCED METERING PROGRAM UPDATE

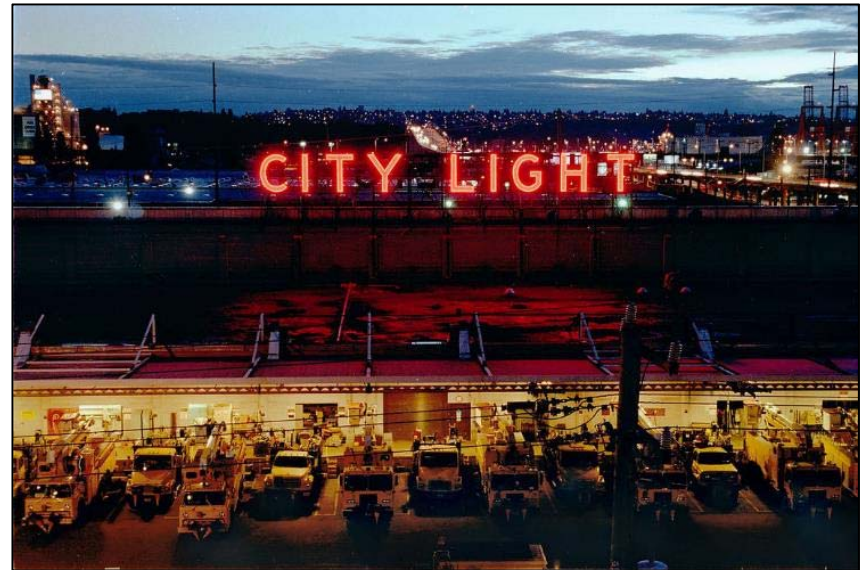
City Light Review Panel

September 13, 2016



INTRODUCTION

- Advanced Meters
- Technology – Mesh Network
- Benefits
- Privacy & Security
- Opt-Out Policy
- Communications Plan
- Workforce Impacts
- Budget
- High Level Schedule

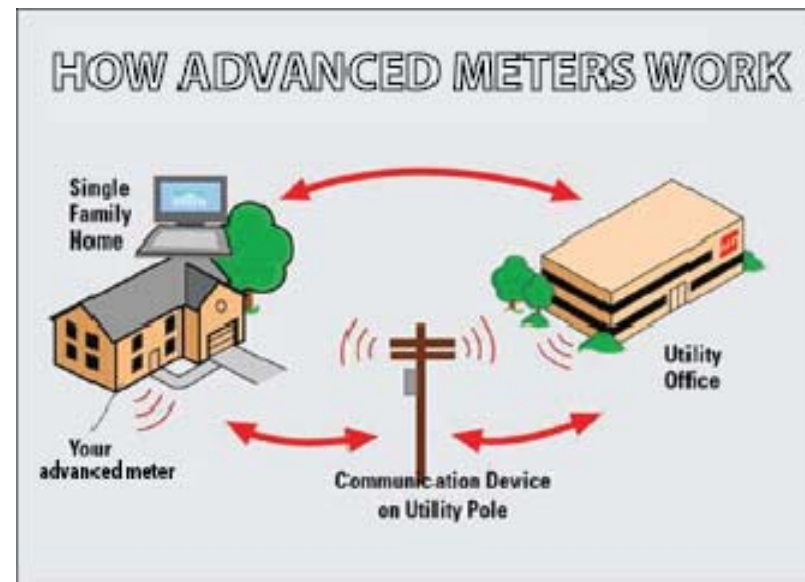


HOW DO ADVANCED METERS WORK?

SENDS ENERGY CONSUMPTION DATA THROUGH AUTOMATED WIRELESS COMMUNICATION

Advanced Meters

- Continuously record the amount of electricity consumed
- Programmed to transmit recorded data as often as needed
 - Industry Std. – Every 4 hours
- Sends information via a secure wireless communication system using radio frequency (RF), much like cellphones



WHAT ARE ADVANCED METERS?

PROVIDE TWO-WAY COMMUNICATION BETWEEN THE METER AND THE UTILITY

- Collect customer kilowatt-hour usage information
- Transmit consumption data through wireless and automated communication

Today

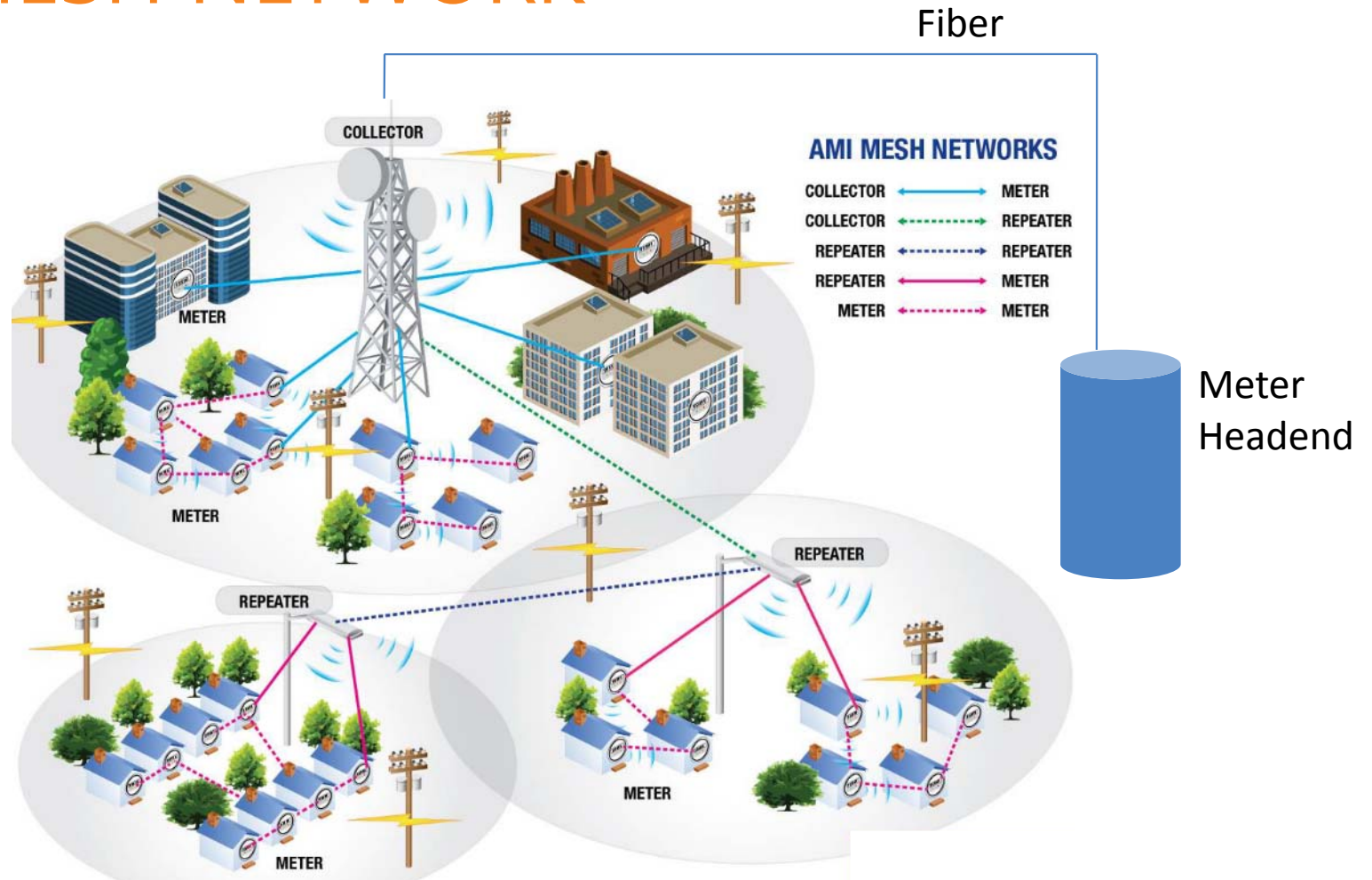
We collect/receive and manage approximately 18 million data points per year

AMI Deployed

Upon completing the AMI deployment we will start receiving wirelessly 30 million data points per day



AMI MESH NETWORK



Schematic from EDX Wireless

WHY ADVANCED METERS?

ADVANCED METERS OFFER MANY BENEFITS TO BOTH THE CUSTOMER AND THE UTILITY



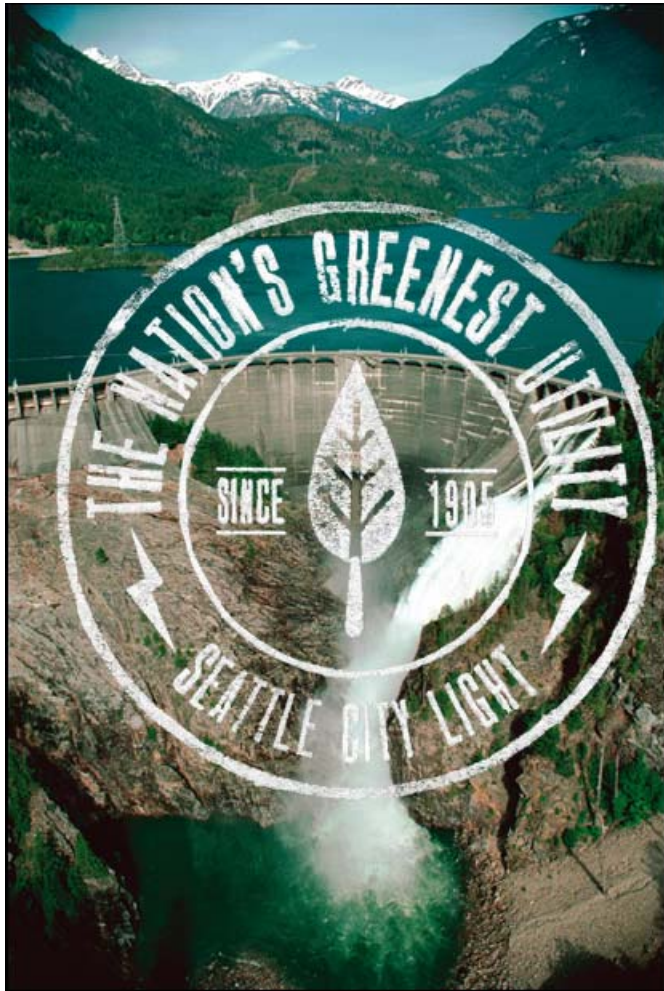
Customer Benefits

- Empower customers to make energy-saving choices
- Improved outage response
- Service enhancements
- Conserve/improve natural resources

Utility Benefits

- Improved Safety
- Improved Load Forecasting
- Operational Efficiencies

KEY PROJECT ACCOMPLISHMENTS



- Network Deployment began in July
- Installed our first two AMI meters in September
- Education and training plan rollout for:
 - Directly impacted employees
 - Other key employee stakeholders

OPT-OUT POLICY

- Opt-Out Policy developed and is in final approval stage.
- Posted for Public comment Aug 1-15
- Supports tenants requiring permission from property owner to opt out.

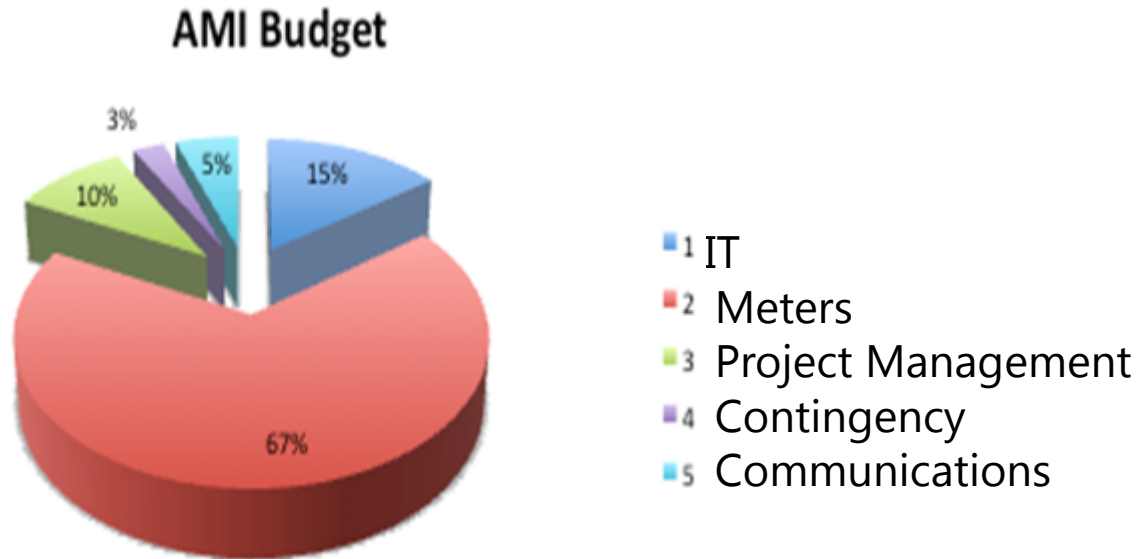
Proposed Fees		
	Standard Opt-Out Charges	Opt-Out Charges for UDP Customers*
One-Time Service / Administration Fee	\$124.43	\$49.77
Installation During Roll-Out with 2 Week Notice	No Charge	No Charge
Installation Fee Per Meter In All Other Instances	\$84.21	\$33.68
Recurring Billing Cycle Fee	\$15.87	\$6.35

WORKFORCE IMPACT



- City Light is committed to preserving its workforce and does not anticipate any layoffs as a result of advanced meter installation.
- Meter readers and other impacted employees have completed new skills' based training and received help with career counseling, resume writing and interview preparation to help secure positions within City Light or in other City departments.
- Change Management Program Team regularly engaging the needs of both directly and indirectly impacted employees.

BUDGET



Commitment to remain on track with the proposed \$94 million budget

HIGH LEVEL SCHEDULE

