

Hurstwood Cable Replacement Project

Virtual Community Meeting – June 20, 2024



Seattle City Light

WE POWER SEATTLE

Project Team Introductions



Bob Stewart,
Resident Engineer,
Seattle City Light



Bikas Pande,
Project Manager,
Seattle City Light



Jenny Levesque,
External Communications Manager,
Seattle City Light



Jason Craig,
Construction Manager,
SCI Infrastructure



Taylor Cobaugh,
Project Engineer,
SCI Infrastructure



Natasha Wheeler,
Community Communications Officer,
Stepherson & Associates

Project Background



Seattle City Light



WE POWER SEATTLE

Project Background

- + Over 1,000 circuit miles of underground primary cables in City Light's service area
- + Direct buried cables were installed in the 1970s (without electrical conduit)
- + Over time, the cable infrastructure is susceptible to damage due to weather, animals, age, etc.
- + The cable failures can cause long unplanned outages, like those that have happened in the Hurstwood neighborhood

Project Background

- + Cables were injected with silicone to extend their life
- + Cables have reached the end of their useful life
- + Infrastructure must be replaced
- + Civil construction will take 12 months
- + Electrical construction will take 5 months



Project Overview

Civil Construction Details



Project Overview – Civil Construction

- + SCI Infrastructure crews will replace underground infrastructure in the Hurstwood neighborhood with new duct banks, conduits, and vaults.
- + No streetlights are included in the scope of work for this project.



Common Terms



Electrical Vault

Underground room that provides access to electrical equipment (transformers, cables, etc.)



Electrical Conduit

Tubes used to protect electrical cables from weather, animals, etc.

Project Impacts – Civil Construction

- + Trenching for conduits will occur in the public right-of-way (e.g., street and planting strips).
- + SCI Infrastructure may be working in multiple locations at a time.
- + Crews will cover trenches with steel plates outside of construction work hours.
- + Customers can expect temporary parking and traffic restrictions.
- + SCI Infrastructure will work to limit traffic impacts.
- + Construction will require sections of roadway in the work zone to be closed to traffic when construction is in progress.

Project Impacts – Civil Construction

- + No power outages are anticipated to complete civil construction. If this changes, City Light will notify impacted residents ahead of any planned power outages.
- + The contractor will work closely with the City of Burien to protect trees and mitigate any removals.
- + All affected streets and landscaping will be restored and repaved, per City of Burien standards.
- + Driveway access to houses closest to the construction will be limited during working hours. Vehicles will be able to pass during non-working hours.

Civil Construction Methods

+ Preliminary Construction Activities

- Survey right-of-way
- Surface locate underground utilities
- Deliver equipment and construction materials

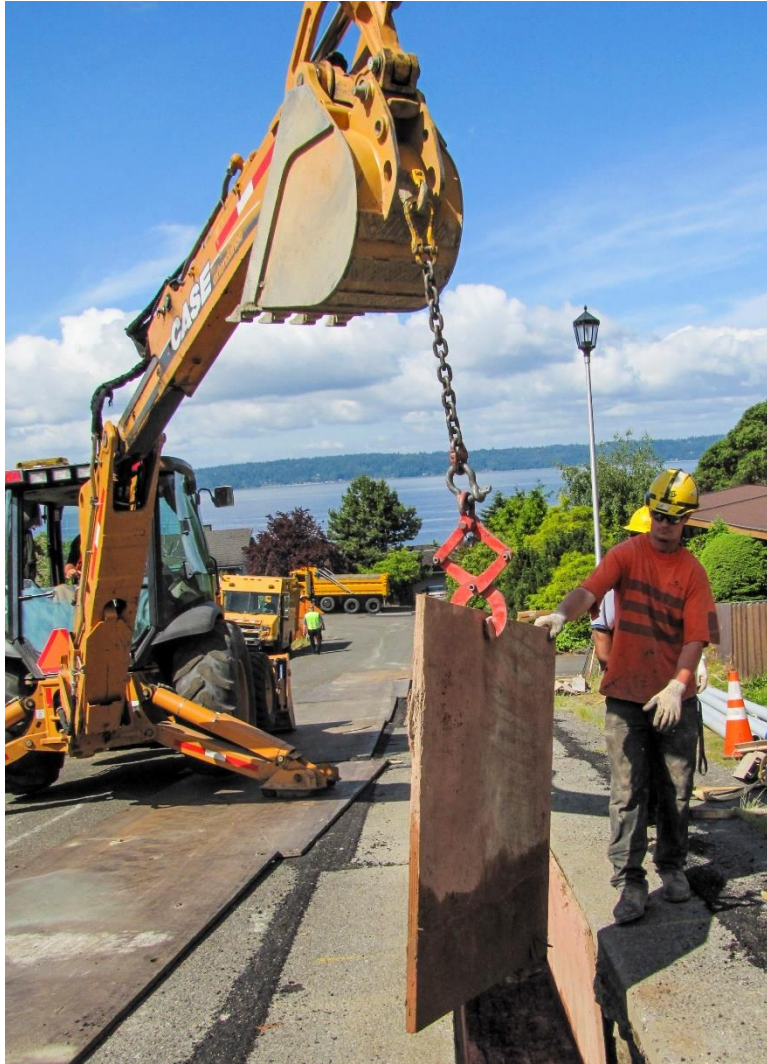
+ Major Construction Activities

- Physically locate underground utilities
- Sawcut pavement for trenching
- Excavate trench for conduit
- Install conduit
- Backfill trench
- Restore pavement and landscaping

Civil Construction



Civil Construction



Project Overview

Electrical Construction Details



Project Overview – Electrical Construction

- + Once underground civil construction is complete, City Light crews will install new cables for the electrical distribution system.
- + Planned power outages will be required to complete the work safely.
- + City Light will notify impacted residents ahead of any planned power outages.
- + The notice will include the day, time, and duration for the planned power outage.

Project Overview – Electrical Construction

- + City Light will install new cables for the electrical distribution system and connect to the existing vaults. This new system is 26 kilovolts (kv).
- + Private service connections (i.e., a customer service cable from a City Light vault or handhole to a private property) are 120/240 volts (v).

Project Overview – Electrical Construction

- + Not all houses in the Hurstwood neighborhood have conduits installed for their private service connection. Most of the private service connections serving individual houses are direct buried cables.
- + If a customer wants to rebuild their service cable in conduit (between a City Light vault/handhole and the customer meter base), they will need to submit a service request to City Light and hire their own contractor to install new conduit(s) per City Light standards.
- + The cost for this rebuild is the responsibility of the owner.

Project Schedule

Construction Start Date

June 24, 2024

Project Duration

Civil: 12 months
Electrical: 5 months
Total: 17 months

Work Hours

Monday-Friday, 7am-5pm



Questions?

Please submit your questions in the chat.



Stay Connected

Contact Natasha with questions:

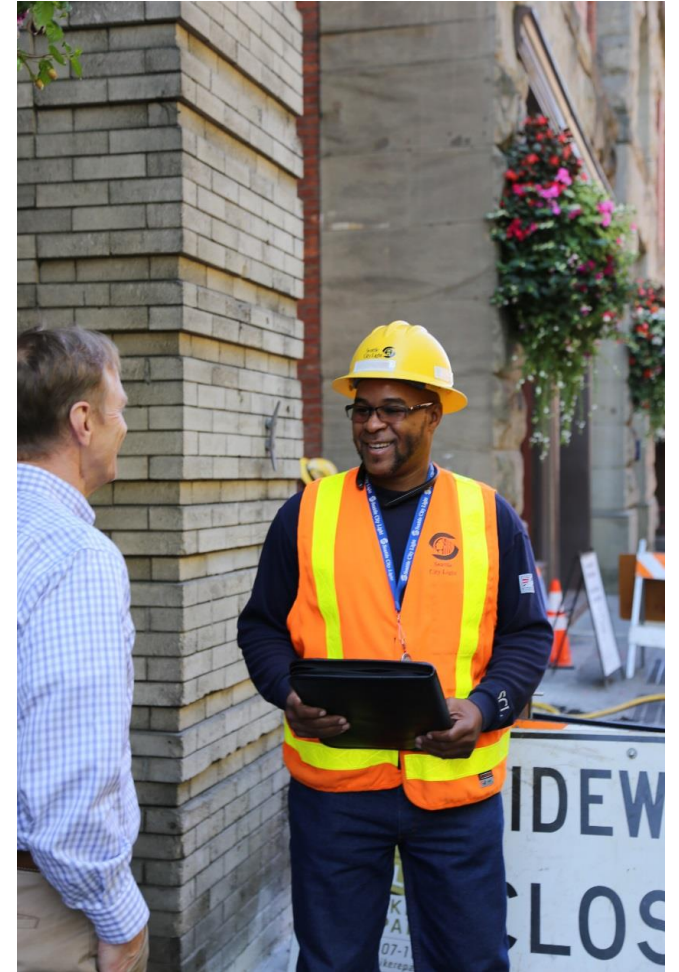
Natasha Wheeler

Community Communications Officer

(253) 525-5062

ProjectHurstwood@stephersonassociates.com

- + Project page on City Light website:
[seattle.gov/city-light/in-the-community/
current-projects/hurstwood-cable-replacement](http://seattle.gov/city-light/in-the-community/current-projects/hurstwood-cable-replacement)
- + Sign up to receive monthly construction updates via email at bit.ly/scl-hurstwood



THANK YOU



Seattle City Light