

Cowen Park + Ravenna Blvd. originally were a deep ravine like Ravenna Park, having been cut by drainage from the post-Ice Age "Lake Russell" (formed by melt-off from the "Vashon" Glacial Ice Sheet, 50,000 years ago.) The glacial basin remaining is "Green Lake" which continued to drain through this ravine until about 1911; installation of sewer and first fill in Boulevard; most recent fill @ Cowen Park in 1961 w/dirt from Seattle Freeway. Stream is now mostly spring-fed (some are mineral). Drains into Union Bay; shoreline (until 1917) is indicated by big curve of railroad.

**COWEN PARK:** (west of 15th Ave.) named for Charles Cowen who gave the park believing that "Man does not live by bread alone"; gatepost inscript. Of English birth, spent childhood at family diamond mine in South Africa. Came to U.S. on business, remained as resident on San Juan estate; Haynes-Cowen Real Estate + Insurance. The present 15th Ave. Bridge built (1938), replacing wooden street car trestle; a spur track went along Service Drive til 1941.

**RAVENNA PARK:** named c. 1889 by the original owner and developer: W. W. Beck, because ravine reminded him of Ravenna, Italy, famed for its pine trees. [Ravenna, Italy, was a Roman naval base, seaport and capital of Italy under Byzantine Empire; scene of Battle of 1512] Other names used by Beck were "Big Tree Pk.", "Ravenna Springs", + "Twin Maple Lane." After purch. by Seattle, the name was changed in 1919 to honor Teddy Roosevelt who had died that January. However a popular petition in 1931 restored the name Ravenna. By then the huge trees had died + been removed. By another petition the southeast corner was filled for a playground + WPA (1931) built a large, scenic wading pool fed by Ravenna Creek. It was abandoned in 1950, after a long stagnation caused by drain failure; filled in 1964 by Metro Sewer excavation.

sheet 1  
**COWEN/RAVENNA PK.**  
**RAVENNA BLVD.** sheet 3  
**(BECK PL.) ENGR.**

X.A.N.D. 1922-1945

07068



BLVD. (See Sheet 3)

PARK (See Sheet 1)



Deed 1923: "for park purposes" by Louise C. & W.M. Beck

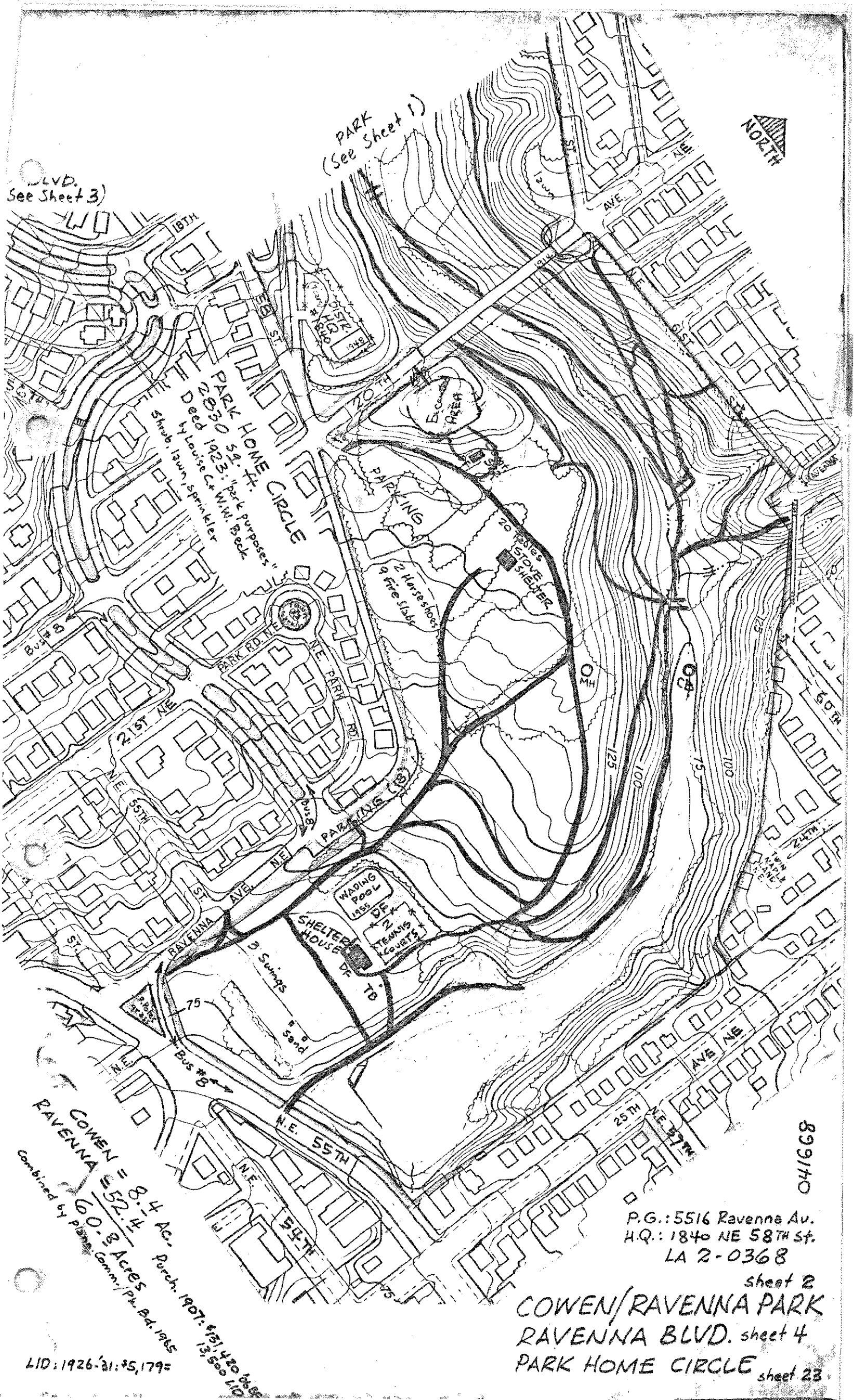
COWEN = 8.4 AC. Porch. 1907: \$131,420.00  
 RAVENNA = 52.4 AC. Porch. 1907: \$13,500.00  
 60.8 ACRES  
 Combined by Plan. Comm./Pl. Bd. 1965

LID: 1926-31: 95,179-

P.G.: 5516 Ravenna Av.  
 H.Q.: 1840 NE 58th St.  
 LA 2-0368

041668

sheet 2  
 COWEN/RAVENNA PARK  
 RAVENNA BLVD. sheet 4  
 PARK HOME CIRCLE sheet 23



PARK  
(See Sheet 1)



LVD.  
See Sheet 3)

PARK HOME CIRCLE  
2030 S.W. Ft.  
Deed 1923: "park purposes"  
Shrub, lawn, sprinkler

COWEN = 8.4 Ac.  
RAVENNA = 52.4 Ac.  
Purch. 1907: \$13,420  
60.8 ACRES  
Combined by Plat. Comm./Pl. Bd. 1965

LID: 1926-31: 95,179-

P.G.: 5516 Ravenna Av.  
H.Q.: 1840 NE 58TH St.  
LA 2-0368

sheet 2

COWEN/RAVENNA PARK  
RAVENNA BLVD. sheet 4  
PARK HOME CIRCLE sheet 23

041668  
89140