

ARCHIVES GAZETTE



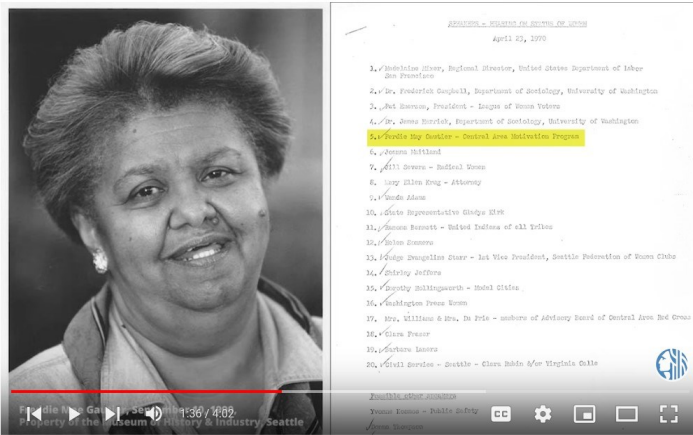
City of Seattle
Seattle Municipal Archives

Number 82 Winter 2022

Office of the City Clerk
Legislative Department

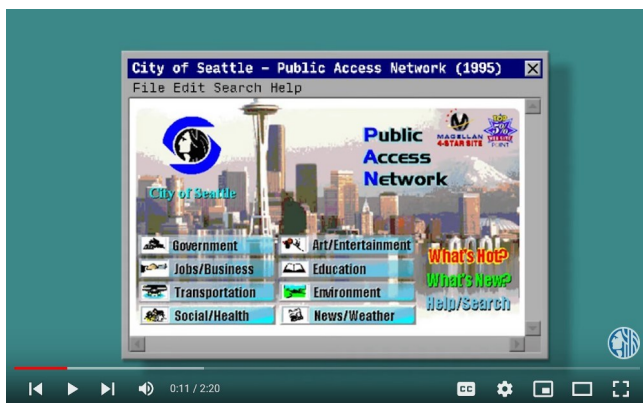
Out of the Archives

Throughout 2022, SMA has continued to produce [Favorite Archival Object videos](#), highlighting some of our favorite materials in the archives and the stories behind them. A variety of record types are represented, including photos, audio and video recordings, textual records, and electronic records.



This [Favorite Archival Object video](#) features audio testimony from Freddie Mae Gautier, who spoke at 1970 public hearing in support of the Seattle Women's Commission.

This year, topics have included: a glimpse into the [City's first website](#), launched in 1995; an [audio recording from a 1970 public hearing](#) that brings to life the voice of a local activist; a [Fire Department Central File on a serial arsonist](#) who confessed to setting 140 fires in the Seattle area during the 1930s; photos of [City Light's prototype electric cars](#) during the 1960s and 1970s; a [1931 hearing transcript](#) detailing the plight of disabled veterans during the Great Depression; a look into the pilot episode of the popular TV series [City A Go-Go](#) which aired on the Seattle Channel from 2002 to 2007; and more.



This [Favorite Archival Object video](#) features a screenshot of the City's first website, launched on February 1, 1995. A total of 33 users accessed the site that day.

(Archives, cont'd)

All of us in the archives have taken turns selecting materials and recording content, and the videos are produced through the creative and technical skills of SMA's audiovisual archivist Libby Hopfauf. We've enjoyed sharing these videos with our social media followers and on SMA's website, and we're also grateful to the [Seattle Channel](#) for helping us grow our reach by highlighting the videos in their social media and web content.

Look for more Favorite Archival Object videos to come in 2023, and see them all [here!](#)

New Voices: Building the Kingdome

A new Voices exhibit now available on SMA's website explores the [fight to preserve Seattle's Chinatown-International District](#) during the construction of the Kingdome.

While the Kingdome provided a venue that attracted major league sports, conventions, and entertainment to Seattle, it also served as a catalyst for activists from the Chinatown-International District to preserve their historical community. Residents and business owners in the International District and Pioneer Square raised concerns regarding how traffic, parking, and potential displacement would further erode the community at a time when they were already struggling to make social improvements such as low-income housing for the elderly and community health services. The exhibit highlights audio excerpts of public testimony given by Bob Santos, Elaine Ko, Nemesio Domingo, and Mayumi Tsutakawa at hearings held by Seattle City Council's Committee of the Whole in 1975.



The Kingdome, circa 1970s.
[Image 195628](#), Series 1629-01, SMA.

Recently Processed: Bike Trails Photographs

Seattle's popular bike trails attract thousands of biking enthusiasts each year. We recently had the opportunity to process the [Seattle Department of Transportation's Bike Trails Photograph Collection \(8105-03\)](#) with the help of University of Denver intern Kellyn Haley. Kellyn digitized and cataloged 628 color and black and white photos taken over 12 years from 1983 to 1995.

Photos show pre-construction, construction, and groundbreaking events for the Burke-Gilman Trail and extension. Lake Union is shown along what, decades later, would become the Cheshiahud Loop which completed the loop around the lake and connected multiple parks to the Burke-Gilman Trail.

In 1985, SDOT made a visit to the Arboretum Bike Trail and photos from that visit show not just the trail but also sweeping views of the grounds. Photos of the McGilvra portion of the trail that runs between the Arboretum and the Broadmoor Golf Club show the greens, driving range, and other features of the course. The Mountains to Sound Greenway trail is shown with photos of the East Duwamish Greenbelt on the east side of I-5.

Also included are SDOT programs such as the Bike Spot Safety Program and Pedestrian Accessibility Program showing the department's efforts to maintain safety while promoting the health and environmental advantages of biking.



Photo from Arboretum Bike Trail site visit on February 13, 1985.
[Image 202660](#), Series 8105-03, SMA.



Burke-Gilman Trail at 3rd & Bedoin, circa 1990.
[Image 202767](#), Series 8105-03, SMA.

(Processed, cont'd)

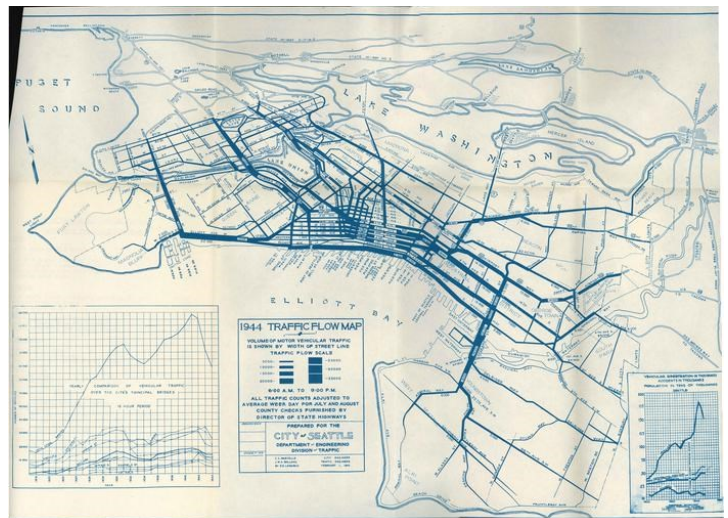


Lake Union trail (Cheshiahud Loop), pre-construction, circa 1992.
[Image 202757](#), Series 8105-03, SMA.

New Exhibit: Traffic Flow Maps

Since the 1920s, traffic flow maps have helped Seattle engineers and planners understand how vehicular traffic "behaves" as it moves through the streets of the city. With bold dark lines showing the most heavily used routes, the maps have informed efforts ranging from the placement and timing of traffic signals, to road improvements, accident prevention, parking regulations, and the design of directional signs. SMA holds several of these maps dating from the 1920s to the 1980s.

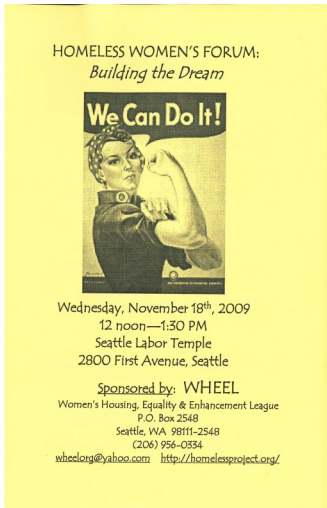
Our [new exhibit](#) highlights how city engineers have tracked traffic patterns in Seattle over time and used the maps to address both existing conditions and potential future concerns. Although the methods of collecting and illustrating traffic data have changed, studies of traffic patterns and flow continue to inform the work of planners throughout the city today.



Traffic Flow Map, 1944.
[Map 3267](#), Series 1802-G2, SMA.

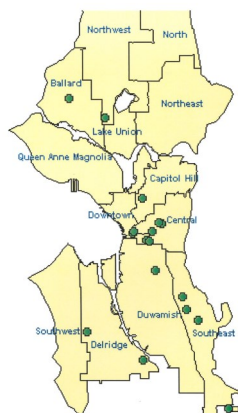
Newly Processed Collections

The **Human Services Department Director's Records (Series 3600-02)** has had a major update, with 25 added boxes documenting the department's activities in the 2000s. Major topics covered in the new records include homelessness, public health, food programs, youth violence, and senior citizens. With this latest addition, the series now spans 49.2 cubic feet and includes records from 1971 to 2010.



Program for Homeless Women's Forum sponsored by Women's Housing, Equality & Enhancement League (WHEEL), on November 18, 2009. Box 104, Folder 10, Series 3600-02, SMA.

City of Seattle Human Services Department Emergency Meal Sites

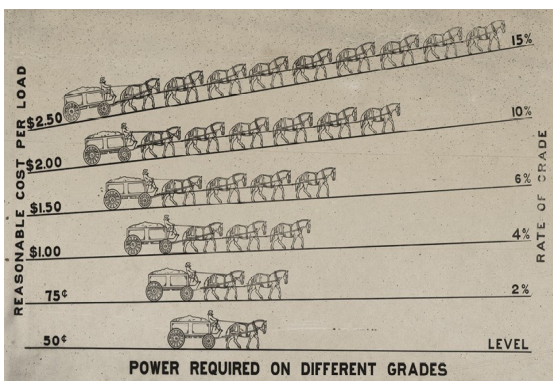


Map showing City of Seattle Human Services Department Emergency Meal Sites, circa 2002. Box 114, Folder 11, Series 3600-02, SMA.

SMA in the News

A recent article from *American Surveyor* uses images from SMA's collection (including the graph seen here) to illustrate an article on [Property Law and the Transformation of Seattle's Terrain](#), exploring how the work of City Engineer R.H. Thomson influenced the growth of Seattle.

In addition, materials from SMA's collections are cited as sources for two new HistoryLink articles on [King County Superior Court: The Early Years](#) and the [history of Green Lake Park](#).



Graph showing Power Required on Different Grades, 1913. [Image 82](#), Series 2613-07, SMA.

109 Years Ago: Municipal Day

Seattle's first Municipal Day was celebrated on June 21, 1913. It was conceived of as a day to demonstrate the City's services to its citizens, as well as a holiday for City employees. The day began with about 2500 of the 3300 City employees marching in what the Seattle Times said was the longest parade seen in Seattle to that point.

The procession included municipal vehicles, horses, and fire equipment, along with exhibits explaining the functions and services of City departments. Policemen's and firemen's bands provided music, and garbage wagons brought up the rear



Municipal Day, 1913.

[Image 169527](#), Series 2613-07, SMA.

of the parade. At the end of the parade route, streetcars waited to bring the employees to Woodland Park for a picnic and games. The Lighting Department strung electric wires into the woods from nearby light poles in order to heat coffee and beans. The day was topped off by an evening ball at the Leschi Pavilion that included a reception for former mayors.

The day was deemed a success, and the following December, City Council passed an ordinance declaring it to be an annual holiday. It was to be celebrated on June 6 to commemorate the anniversary of the Great Seattle Fire, which was seen to have birthed "a civic spirit [which] made possible a New Seattle with higher hopes and ambitions and an assured destiny of civic greatness." The 1914 Municipal Day, the first authorized by the ordinance, would fall on the 25th anniversary of the fire.

When planning for 1914's holiday came around, city officials decided against repeating the parade. A Times article headlined "Municipal Parade Believed Mistake" said that during the 1913 parade, officials "heard frequent expressions of 'there goes our money' and 'that is the procession of tax-eaters.'" It had a peculiarly ominous sound to the department heads and they do not want to listen to it again." An upcoming vote on a new city charter was on city officials' minds and they were not enthusiastic about emphasizing the size of the City government. About 5000 employees and family members attended the 1914 picnic at Woodland Park, including all city officials other than Mayor Gill, who was home with a broken arm. This turned out to be the high point for the holiday. In 1915, there were about 2000 participants. A notice in the Seattle Times about 1916's Municipal Day reported that the City's day laborers were given the day off, but other employees remained at work and "no demonstration of any kind" was planned for the day. The ordinance establishing Municipal Day was repealed in 1917.

Find this and other Find of the Months on [SMA's website](#).

YouTube and Flickr News

A popular image recently posted to [SMA's Flickr](#) site is this Engineering Department photo showing 5th and Pine in downtown Seattle on May 19, 1959.



[Image 61353](#), Engineering Department Negatives (Series 2613-07, SMA).

Several short films of footage showing Seattle City Light employees playing golf at the Rainier Golf & Country Club during the 1950s-1970s have been recently posted to SMA's YouTube channel, including this one which we estimate dates from around 1954.



Electric League Golf, circa 1954.

[Event 262](#), City Light Moving Images (Series 1204-05), SMA.

Seattle Municipal Archives

600 Fourth Avenue, Floor 3,
PO Box 94728
Seattle, WA 98124-4728
206 233-7807 archives@seattle.gov
www.seattle.gov/CityArchives

10 Years Ago: Marriage Equality in Seattle

Just a few days after same-sex marriage was legalized in Washington State, over 100 couples were married in a celebration at Seattle City Hall on December 9, 2012. Hundreds of supporters lined the stairs along the Fourth Avenue Plaza to cheer the newly married couples as they left City Hall.

Learn more at our online exhibit on [Domestic Partnerships and Marriage Equality in Seattle](#).



Newly married couples leaving City Hall on December 9, 2012..
Images [191727](#) and [191955](#), Series 5801-07, SMA.

Upcoming Events

- Jan 14 [History Café: Why America Was Not in Carlos Bulosan's Heart](#). 6:30-8pm at MOHAI.
- Feb 11 [Building with Purpose: Black Architects and Community Agency](#). 11am-1pm at MOHAI, in partnership with the [Black Heritage Society of Washington](#).
- Feb 15 [History Café: Paying Tribute to Seattle's Black Landmarks and Their Namesakes](#). 6:30-8pm at MOHAI.