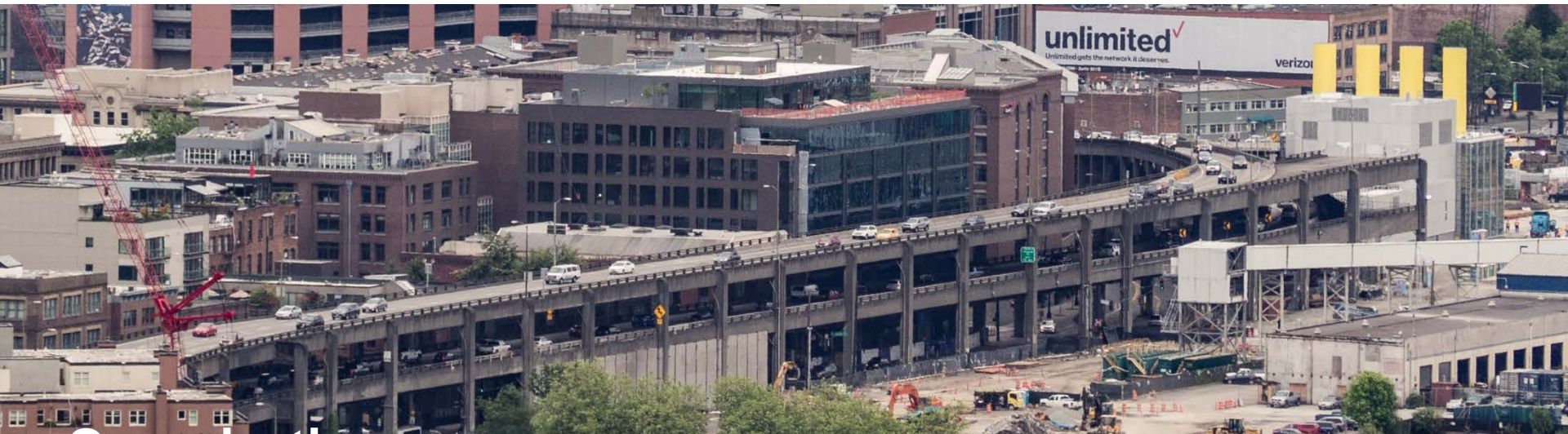


# Alaskan Way Viaduct **REPLACEMENT** PROGRAM



Seattle Bicycle Advisory Board

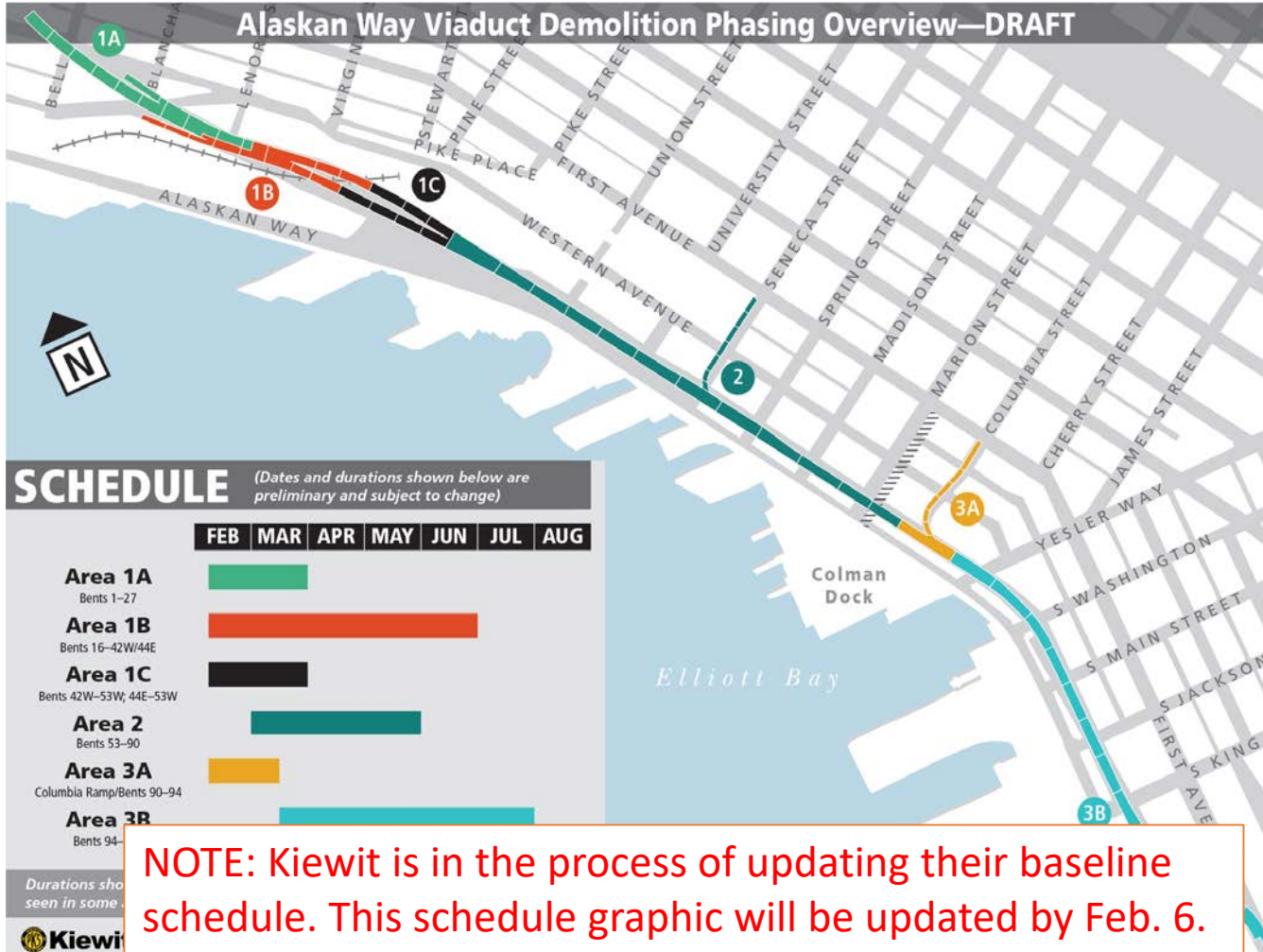
*Chris Brown, WSDOT*  
February 6, 2019

# TODAY'S FOCUS

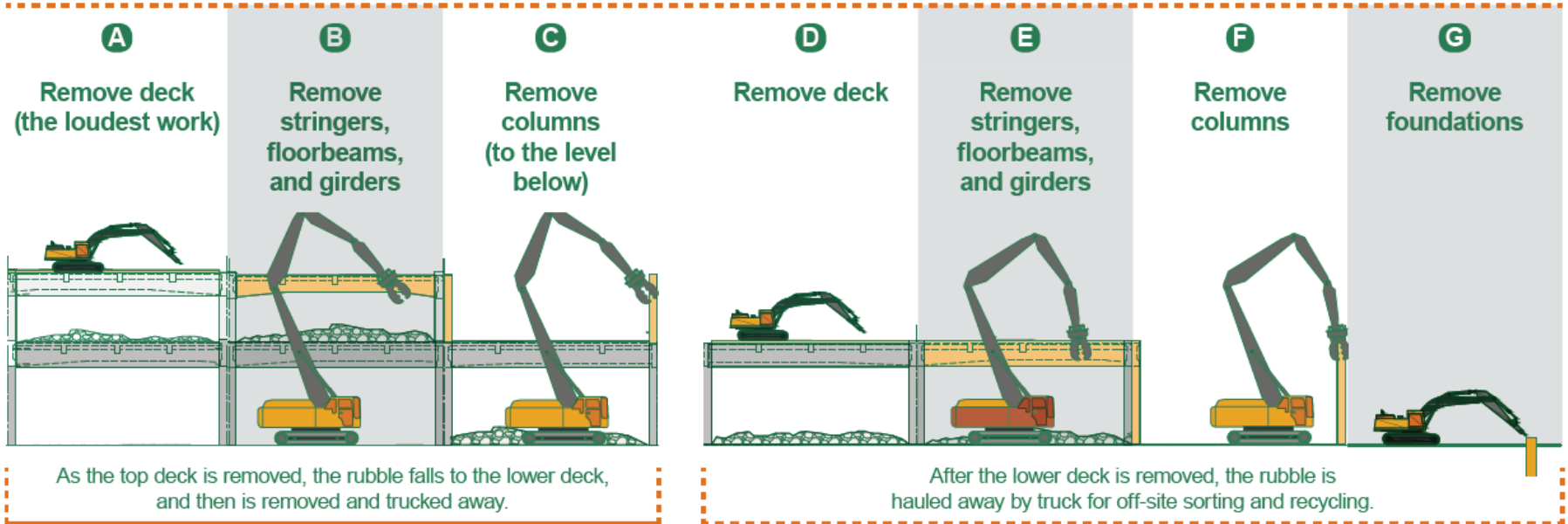


- Viaduct demolition overview and schedule
- Bicycle and pedestrian routes
- Methods of communication

# Viaduct demolition will take about six months



# Viaduct segments taken down one deck at a time



## Removing the Seneca and Columbia ramps

Removing the Columbia Street and Seneca Street ramps will be a slightly different process. Crews will use small excavators to remove the bridge deck, then forklifts and cranes to remove girders one-by-one. Material from the ramp structures will be lowered to the ground and hauled away.

## Work zone will shift along the viaduct

### Stage 1:

Site prep



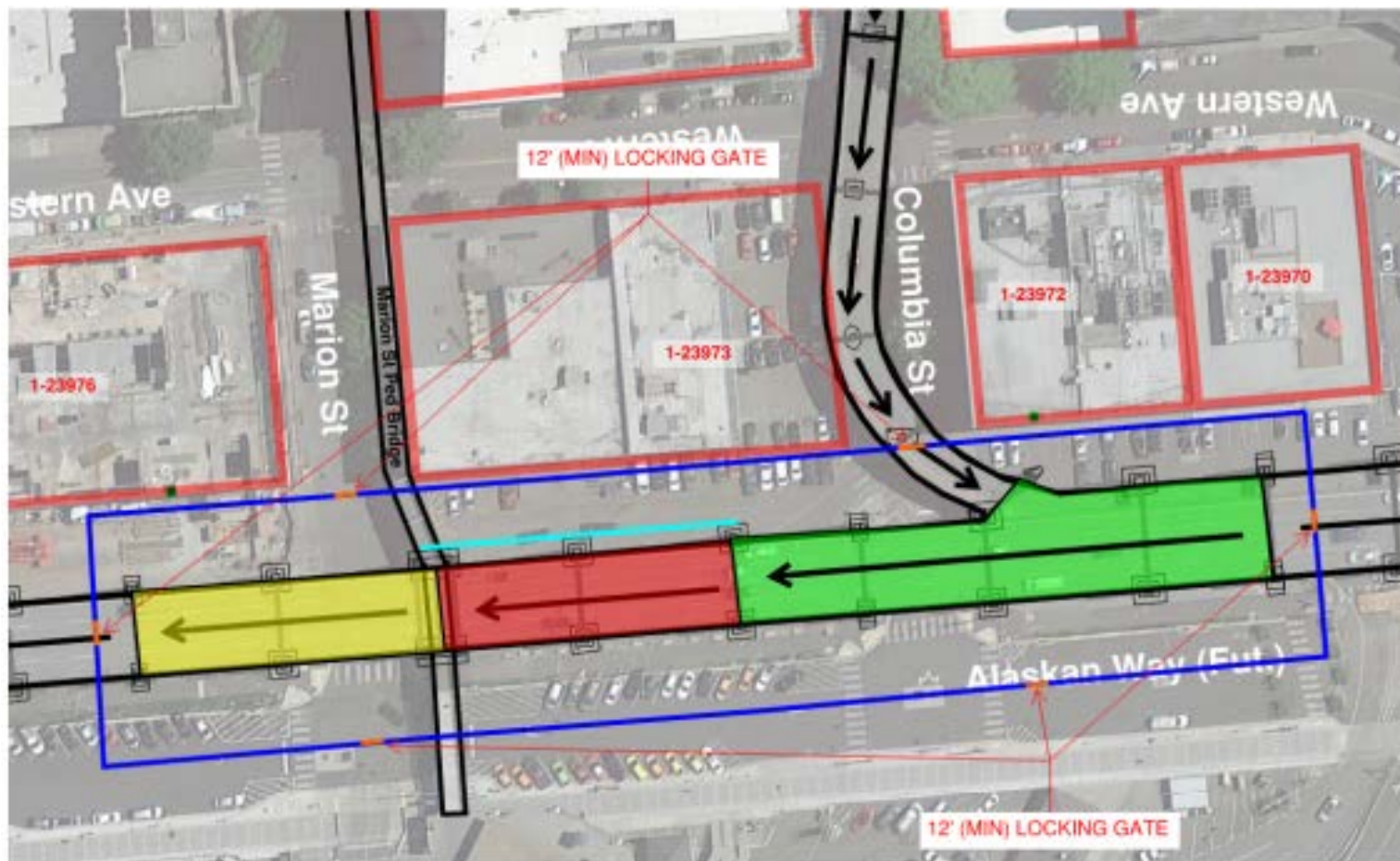
### Stage 2:

Active demo



### Stage 3:

Site restore



*Example work zone. All three areas fenced off but active demolition only occurs in red zone.*

# What to expect from viaduct demolition

## Working quickly and safely

- Work at multiple locations at once.
- Impact work daytime only.
  - *Except short durations for ramps and over railroad tracks.*
- Spraying/misting water to control dust.
- Monitoring vibration and noise to ensure work stays within permitted limits.
- Shielding or nets to protect nearby buildings.

## Machinery, not explosives



# TODAY'S FOCUS



- Viaduct demolition overview and schedule
- **Bicycle and pedestrian routes**
- Methods of communication



## Goals

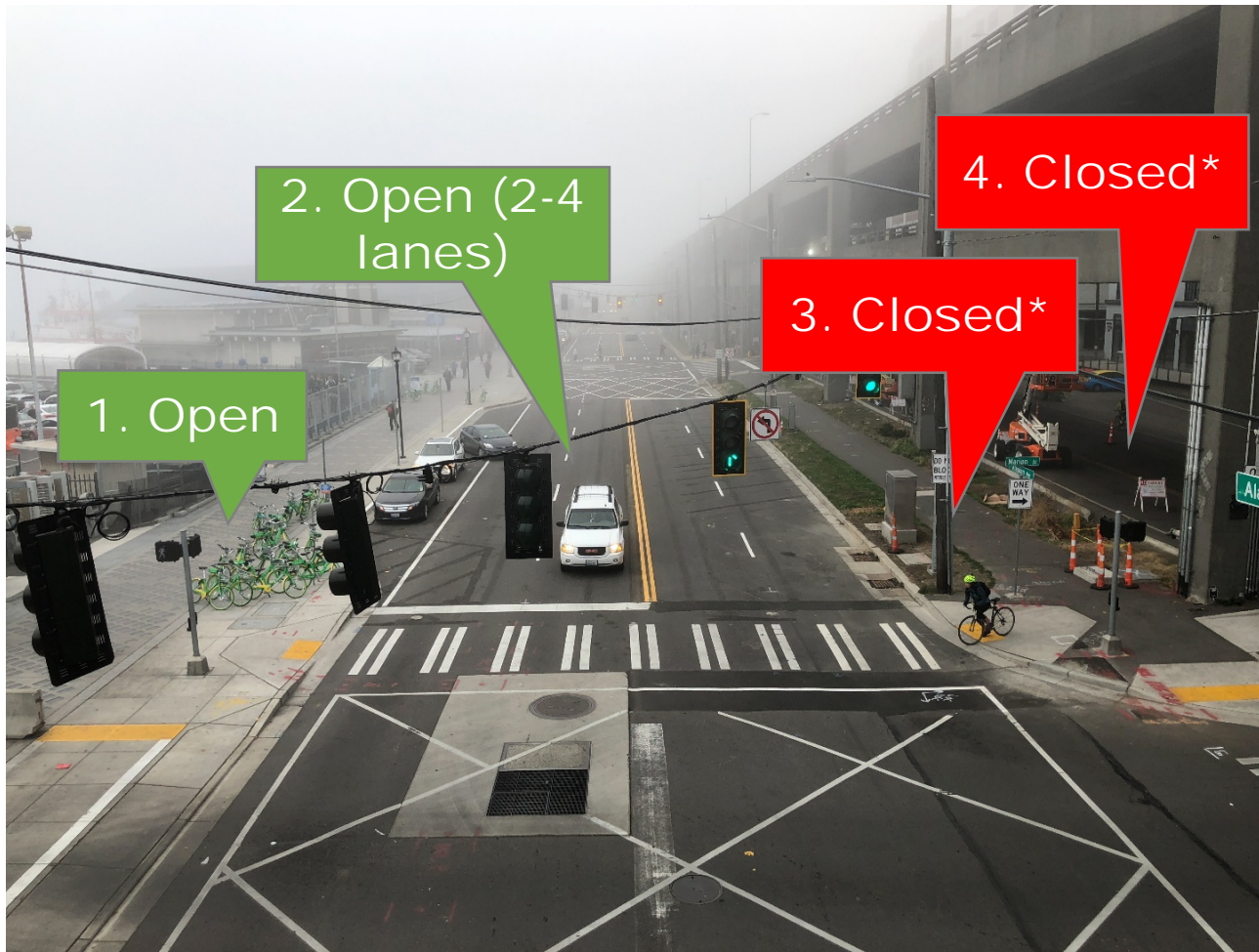
- Safe paths for people of all abilities, traveling by all modes.
- No accidental entry into work zones.
- Avoid sign blindness / too many signs.
- Maintain clear routes to Colman Dock.

## Challenges

- Work zone constantly moving.
- Multiple work zones along waterfront at same time.
- Limited alternative dedicated bike routes.
- Heavy tourist area.
- Highly visible construction may encourage stopping and watching.



# Bicycle route options along waterfront



## North-south routes

1. West side shared-used sidewalk.
2. Alaskan Way travel lanes.
3. East side path when not in work zone.
4. North local access lane when not in work zone.





## East-west routes

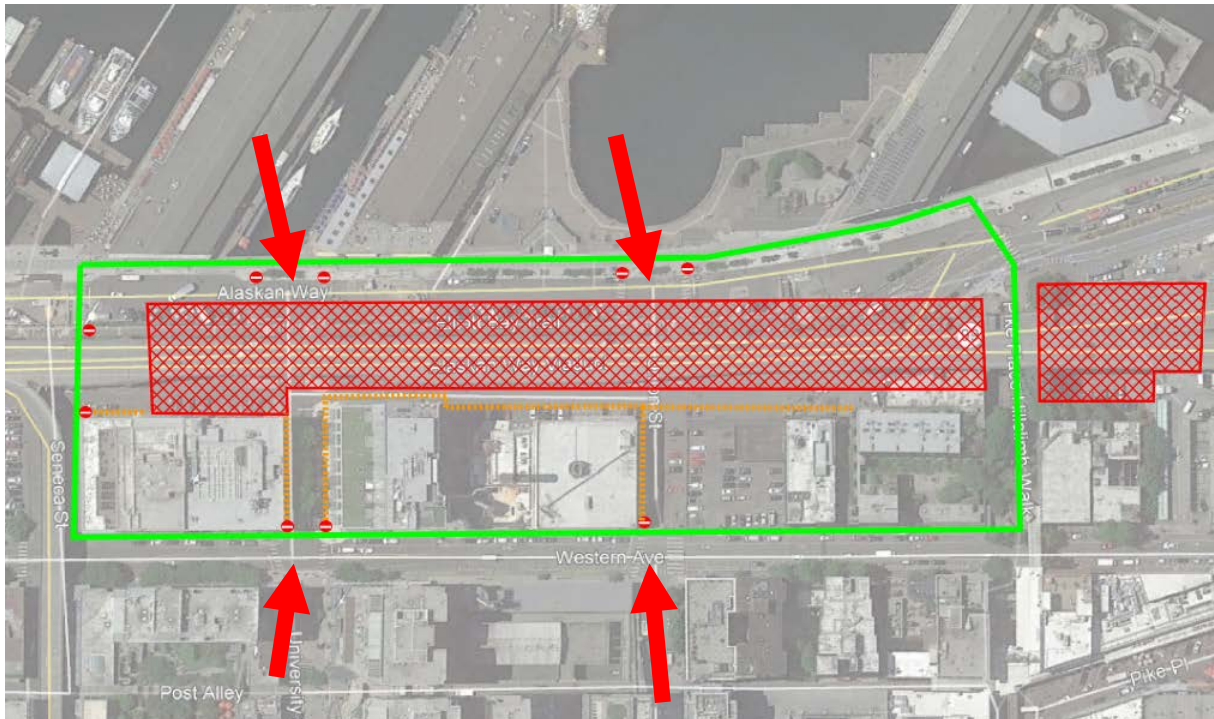
- Change repeatedly.
- Closest open street indicated with signage.
- No more than 2-3 blocks in either direction to pass beneath viaduct.

*\*East side path and local-access lane under viaduct will be open before and after viaduct demolition in a given area.*

## Example fencing and signage plan

### KEY

-  NO PUBLIC ENTRY
-  MAIN DETOUR ROUTE
-  LOCAL ACCESS ONLY ROUTE
-  SIDEWALK CLOSED AHEAD SIGN



### Highlights

- Distance to nearest east/west crossing via “X Block” signs.
- Fencing pulled back to maintain crosswalks at corners.
- No fixed detours.

# TODAY'S FOCUS

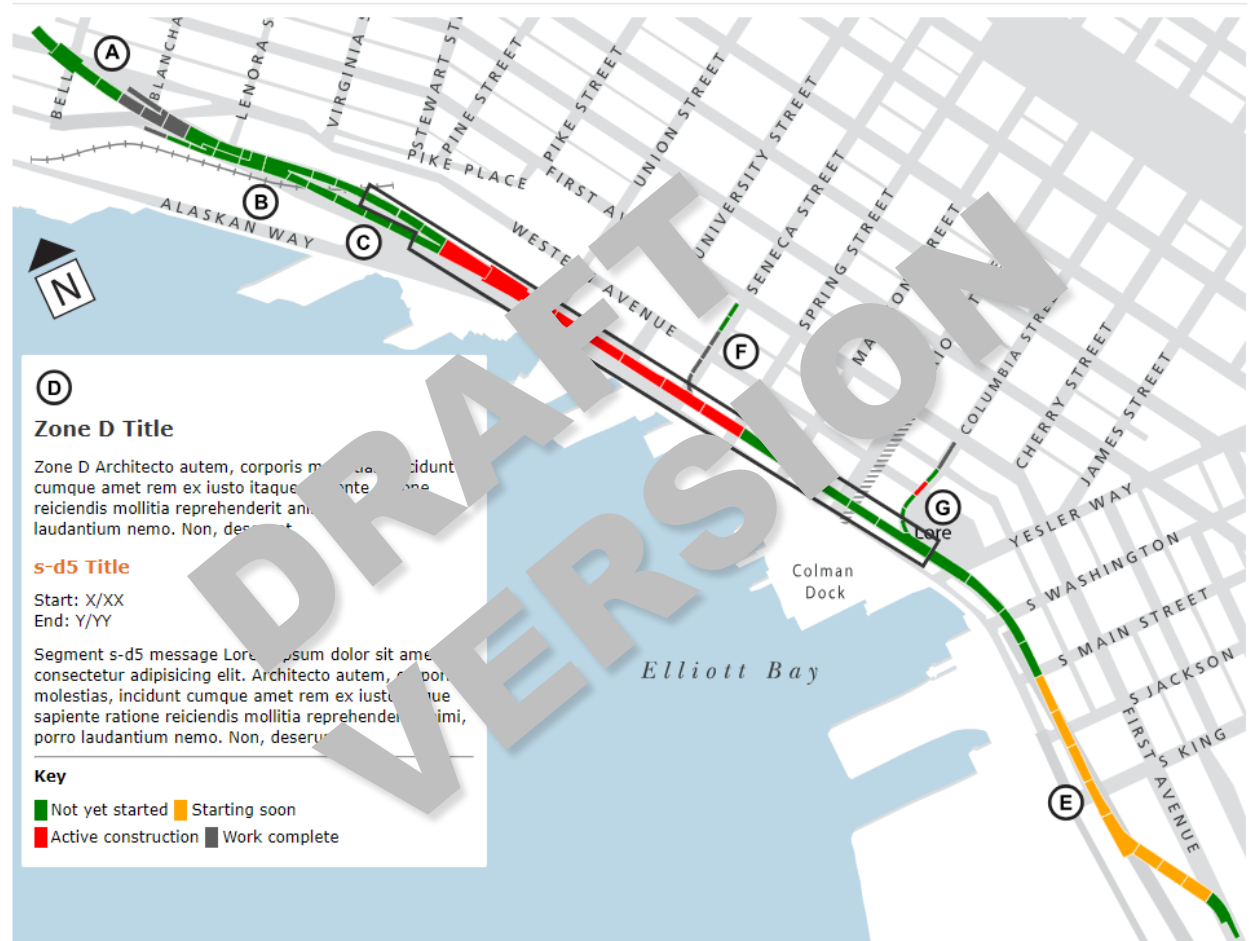


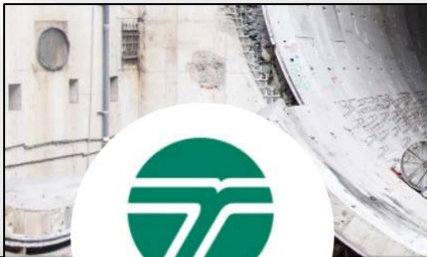
- Viaduct demolition overview and schedule
- Bicycle and pedestrian routes
- **Methods of communication**

# Keeping the public updated on construction

## Methods

- Website with weekly tracker.
- Weekly emails.
- Mailed flyers to neighbors before work begins.
- Twitter.
- Close coordination between WSDOT, SDOT and Waterfront Seattle.
- 24/7 project hotline: 1-888-AWV-LINE.





**SR 99**

@BerthaDigsSR99

Bertha completed her dig and now we're completing the work to replace the Alaskan Way Viaduct. WSDOT feed for construction and demolition updates.

*How to* **REACH US**



**Website:**

[www.99tunnel.com](http://www.99tunnel.com)

[www.AlaskanWayViaduct.org](http://www.AlaskanWayViaduct.org)

**Twitter:**

@BerthaDigsSR99

**Email:**

[viaduct@wsdot.wa.gov](mailto:viaduct@wsdot.wa.gov)

**Hotline:**

1-888-AWV-LINE