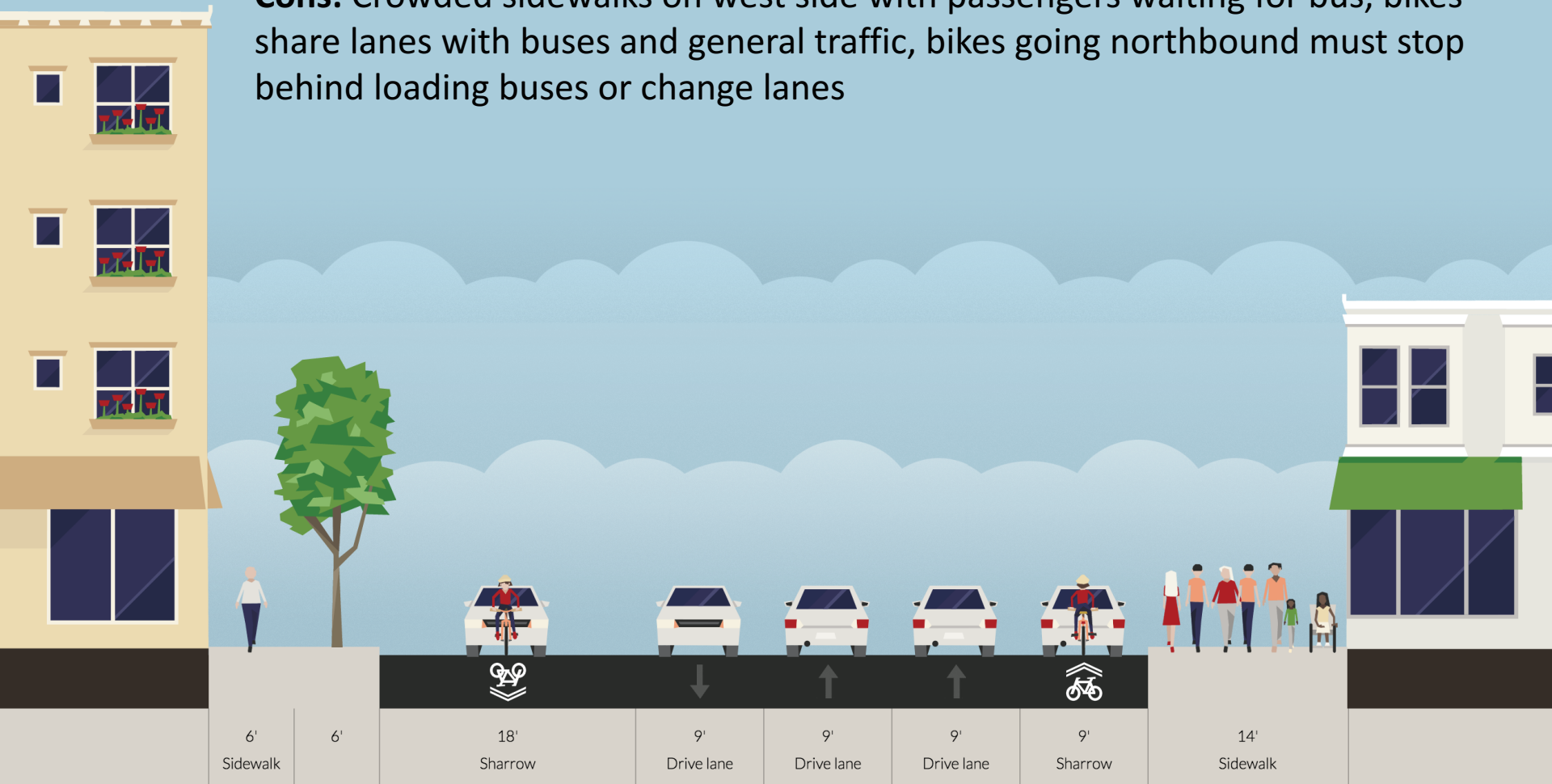


# Existing

**Cons:** Crowded sidewalks on west side with passengers waiting for bus, bikes share lanes with buses and general traffic, bikes going northbound must stop behind loading buses or change lanes



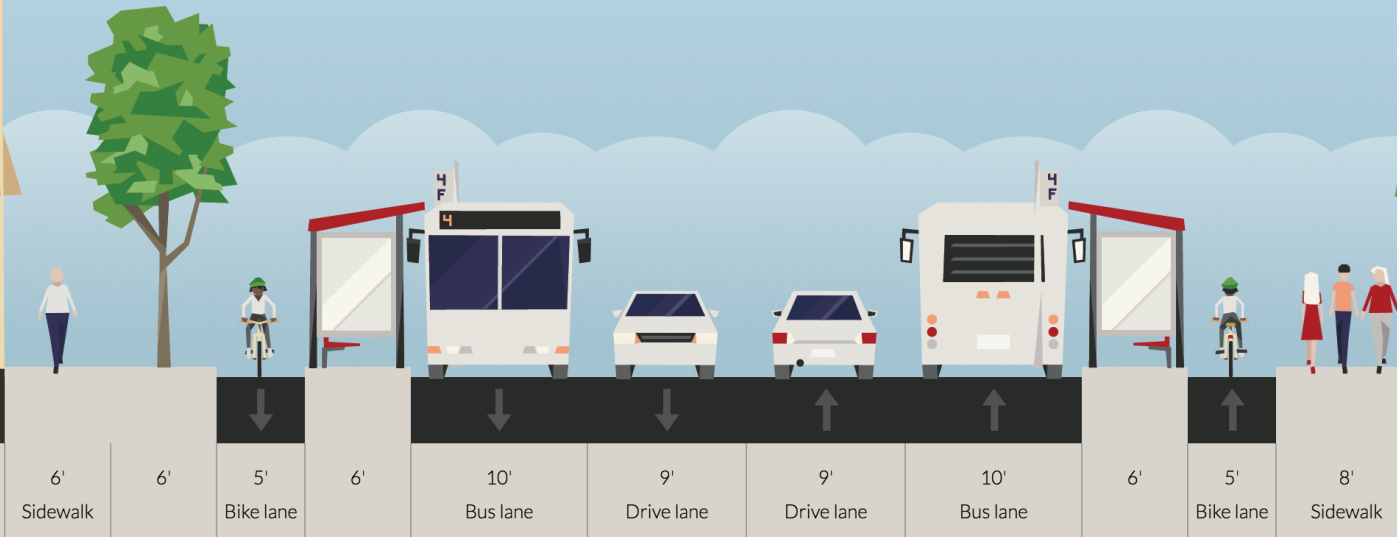
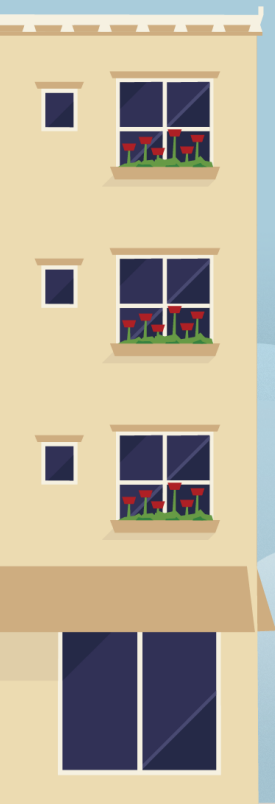
West

East

# PBLs

**Pros:** PBLs, bus waiting area, buses prioritized general traffic remains

**Cons:** relocating utility poles on east side could be expensive, need right turn only signal/bike signal



West

East

# Shared Lanes with Bus/Right Turn Only

**Pros:** added sidewalk on west side, buses prioritized, no boarding over bike lane, room for bikes to travel around stopped buses, general traffic remains

**Cons:** not traditional all ages and abilities bike infrastructure

