

# Design and Maintenance: Creating a Stronger Link

## ▶ Residential Case Study:

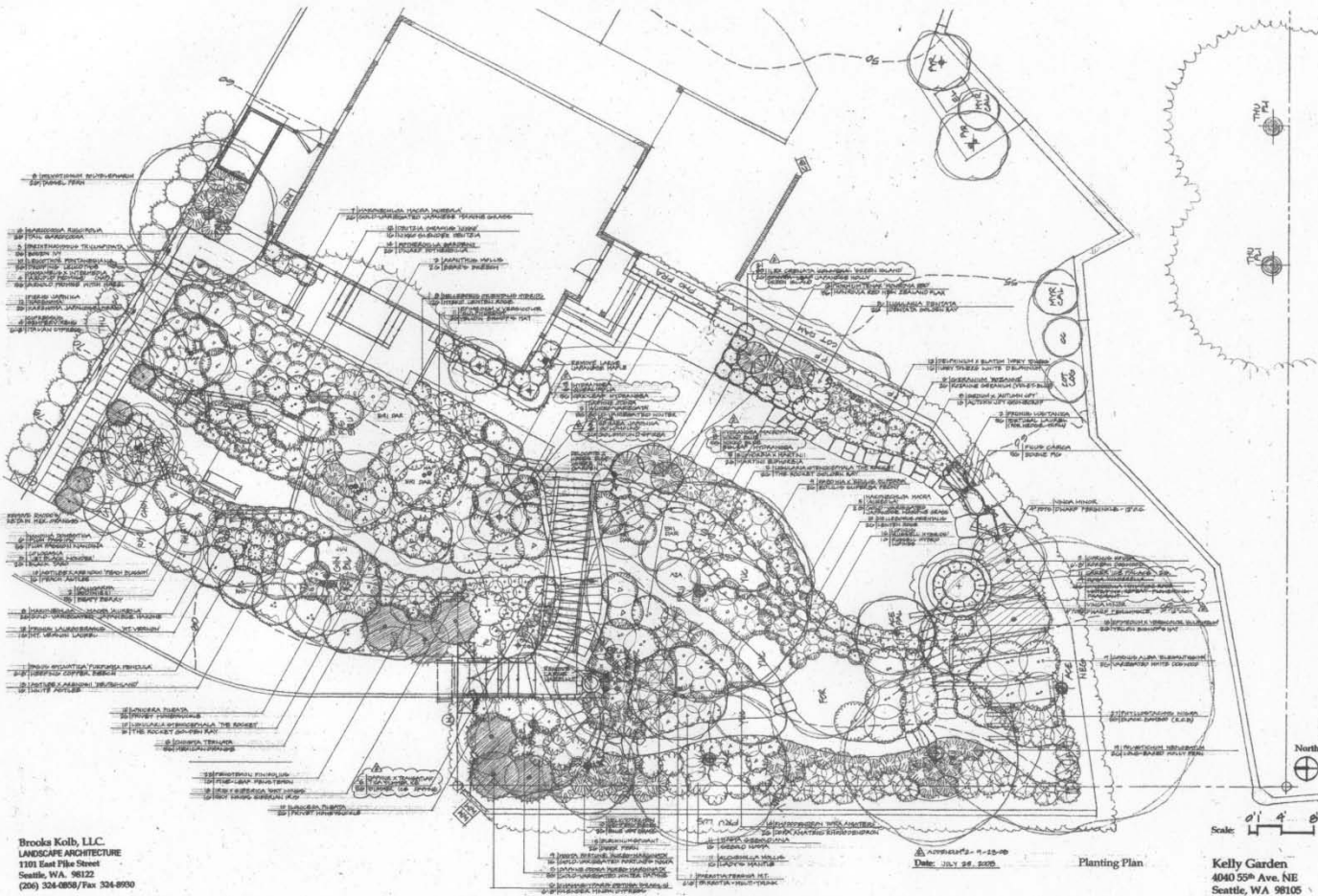
Brooks Kolb, ASLA and Eileen O'Leary  
Gardener











Brooks Kolb, LLC  
 LANDSCAPE ARCHITECTURE  
 1101 East Pike Street  
 Seattle, WA 98122  
 (206) 324-0808/Fax 324-8930

AMENDED - 11-20-09  
 Date: 07/28/2009  
 Planting Plan

Kelly Garden  
 4040 55th Ave. NE  
 Seattle, WA 98105

















