

ORGANICS REPORT

4th Quarter 2012

(Formerly Known as Yard Waste Report)

Seattle Public Utilities, Economic Services Section

Report Date: January 31, 2013

Phone: (206) 684-4143

Tonnage Breakdown

Self Haul

Q4 2012: 1,332 Tons 9.1% decrease vs. same period in 2011
Cumulative YTD Self Haul: 6,593 Tons 2.9% decrease vs. same period in 2011

Residential

(single family and multi family)

Q4 2012: 20,982 Tons 1.7% increase vs. same period in 2011
Cumulative YTD Curbside: 83,666 Tons 4.8% increase vs. same period in 2011

Commercial

(contract and non contract tons)

Q4 2012: 11,293 Tons 4.9% increase vs. same period in 2011
Cumulative YTD Commercial: 42,612 Tons 4.5% increase vs. same period in 2011

Organics Subscription Information by Premises¹ Type

Can premises customers are those that receive can garbage service. Can customers can request Exempt service if they do backyard food waste composting. Dumpster premises customers are subscribed to dumpster garbage service. "Curb" service is the same as can premise service, the customers moves the can out to the curb for collection. "On Site" service does not require the customer to move their container(s) out to the curb, similar to dumpster service. "Liner" service means a new liner is provided after each collection.

Can Premises by Subscription Type

Dec-12	13 gal	32 gal	90 gal	Curb Liner	Onsite Liner	Total Signed Up	Exempt	Not Signed Up
Can Premises	32,101	13,059	95,962	245	39	140,919	6,418	317
%	22%	9%	65%	0.2%	0.03%	95%	4%	0.2%

Dumpster Premises by Subscription Type

Dec-12	Curb No Liner	Curb Liner	Onsite Liner	Total Signed Up	Exempt	Not Signed Up
Multifamily Dumpster	2,062	2,207	839	4,986	116	104
%	40%	42%	16%	96%	2%	2%

¹A premise is roughly equal to a building in our billing system. An apartment building is typically equal to one premise.

Basics of Residential Organics Program

Service: Beginning April 2009, collection frequency increased from bi-weekly to weekly pickup. All single family customers are required to sign up for organics service or request an exemption if they have backyard food waste composting. As of September 2011 multifamily and multiplex customers are also required to sign up for organics service. Multifamily customers can sign up for residential can/cart curb service or onsite can/cart service. (Curb service requires the customer to bring their container to the curb; onsite service does not require the customer to move their container.) Liner service, which includes a biodegradable plastic liner placed in the can or cart after each collection, is also available to multifamily customers.

MATERIALS: Leaves, grass clippings, prunings 4 inches or less in diameter. Starting in April 2009, all food waste and food soiled paper are allowed in the cart. It is illegal to put leaves, grass clippings and prunings in the curbside garbage can.

Fees: Monthly Variable Can/Cart Prices: 13 gal = \$4.65, 32 gal = \$6.95, 96 gal = \$8.95

Basics of Self Haul Program

SERVICE: Two city owned recycle and disposal stations accept organics during regular operating hours. Yard waste must be separated and cannot be disposed of as garbage.

FEES: **Cars:** \$20.00 per trip (compared to \$30.00 per trip for garbage).
Trucks: \$110.00 per ton (compared to \$145.00 per ton for garbage).

Basics of Commercial Program

SERVICE: Seattle has contracts with Waste Management and Cleanscapes for garbage and organics service. Customers can sign up with their contract garbage hauler for curb can/cart organics service. If they want on-site cart or dumpster service, they can use Cleanscapes which has a contract with Seattle for this service². In addition, Seattle commercial customers can choose organics service through a hauler outside of the city contracts. This is referred to as “non-contract” organics service.

MATERIALS: All food scraps (including meat, fish, dairy and produce), food soiled paper, waxed cardboard, and yard debris.

FEES: Approximately 32% below garbage prices. (Non contract prices vary.)

²“Curb service” requires the customer to bring their container to the curb. “On-site service” does not require the customer to move their container for collection.

CITY OF SEATTLE ORGANICS PROGRAM

		TONNAGE DATA									ACCOUNT SIGN-UP DATA					
Year	Month	SELF HAUL			CURBSIDE ³				COMMERCIAL ⁴			RESIDENTIAL		COMMERCIAL		
		North	South	Total ¹	WM	USD	CS	Total	Contract	Non Contract	Total	Accounts	Lbs/Acct	Contract	NonContract	Total
2011	1	182	136	318	2,079		1,713	3,791	229	2,955	3,184	141,630	54	645	1,284	1,929
2011	2	182	170	352	1,918		1,469	3,387	174	2,955	3,129	141,873	48	650	1,284	1,934
2011	3	244	205	449	2,790		2,108	4,898	228	2,955	3,183	142,128	69	657	1,284	1,941
2011	4	281	317	598	4,248		2,919	7,167	216	3,131	3,347	141,250	101	660	1,344	2,004
2011	5	312	353	664	6,002		3,923	9,925	249	3,131	3,380	141,376	140	689	1,344	2,033
2011	6	399	426	825	6,223		4,149	10,372	214	3,131	3,345	141,558	147	700	1,344	2,044
2011	7	380	441	821	4,467		3,114	7,580	237	3,249	3,486	141,963	107	716	1,368	2,084
2011	8	340	338	678	3,805		2,729	6,534	246	3,249	3,494	142,596	92	713	1,368	2,081
2011	9	328	296	624	3,190		2,340	5,530	221	3,249	3,469	142,938	77	727	1,368	2,095
2011	10	268	243	511	3,220		2,438	5,658	216	3,366	3,582	140,723	80	726	1,407	2,133
2011	11	279	210	489	4,540		4,093	8,633	260	3,366	3,626	141,007	122	732	1,407	2,139
2011	12	255	210	465	3,295		3,041	6,336	196	3,366	3,562	141,310	90	739	1,407	2,146
2012	1	163	158	321	2,290		1,887	4,177	161	3,234	3,396	142,669	59	739	1,453	2,192
2012	2	172	247	419	2,295		1,846	4,141	133	3,234	3,367	142,889	58	748	1,453	2,201
2012	3	194	237	431	2,846		2,176	5,022	152	3,234	3,386	143,118	70	754	1,453	2,207
2012	4	288	353	641	5,047		3,554	8,601	151	3,273	3,424	143,368	120	760	1,433	2,193
2012	5	321	386	707	6,339		4,286	10,625	175	3,273	3,449	143,510	148	775	1,433	2,208
2012	6	348	390	739	5,390		3,732	9,121	217	3,273	3,491	143,602	127	779	1,433	2,212
2012	7	413	393	806	4,224		3,551	7,775	139	3,453	3,592	143,594	108	802	1,457	2,259
2012	8	311	316	627	4,743		2,930	7,673	149	3,453	3,602	143,542	107	803	1,457	2,260
2012	9	303	268	571	3,215		2,333	5,548	159	3,453	3,613	143,601	77	807	1,457	2,264
2012	10	248	231	479	3,606		2,812	6,419	177	3,585	3,762	145,167	88	811	1,482	2,293
2012	11	278	220	497	4,862		4,470	9,332	194	3,585	3,779	145,157	129	827	1,482	2,309
2012	12	208	147	355	2,741		2,491	5,231	167	3,585	3,751	145,905	72	828	1,482	2,310
Total 2012		3,245	3,348	6,593	47,599		36,067	83,666	1,975	40,637	42,612	2012 Avg	97		2012 Avg	2,242
Total 2011		3,449	3,345	6,794	45,777		34,036	79,813	2,686	38,101	40,787	2011 Avg	94		2011 Avg	2,047
Total 2010		3,715	3,966	7,682	46,564		33,388	79,952	2,113	35,139	37,252	2010 Avg	95		2010 Avg	1,648
Total 2009		4,775	5,374	10,149	42,648	4,455	27,127	74,230	1,763	29,961	31,724	2009 Avg	90		2009 Avg	1,243
Total 2008		5,530	6,363	12,667	28,348	28,016		56,364	2,260	24,902	27,162	2008 Avg	87		2008 Avg	930
Total 2007		6,731	7,516	14,247	27,447	27,126		54,573	5,023	9,748	14,771	2007 Avg	87			
Total 2006:		6,953	7,323	14,276	26,125	25,414		51,539	7,123	280	7,403	2006 Avg	85			
Total 2005:		6,598	7,328	13,925	22,009	20,595		42,603				2005 Avg	74			
Total 2004:		7,729	7,177	14,905	19,670	18,815		38,485				2004 Avg	69			
Total 2003:		7,559	6,597	14,156	17,094	16,830		33,923				2003 Avg	62			
Total 2002:		7,844	6,522	14,366	17,086	17,417		34,503				2002 Avg	70			
Total 2001:		8,279	6,755	15,034	18,412	18,578		36,990				2001 Avg	NA			
Total 2000:		8,280	5,752	14,031	18,240	15,797		34,037				2000 Avg	66			
Total 1999:		8,186	5,506	13,692	28,080	11,657		39,737				1999 Avg	78			
Total 1998:		8,122	4,912	13,034	28,286	12,260		40,546				1998 Avg	79			
Total 1997:		8,574	5,563	14,137	30,017	13,113		43,130				1997 Avg	84			
Total 1996:		7,341	4,186	11,527	27,491	11,842		39,333				1996 Avg	76			
Total 1995:		7,567	4,596	12,163	29,122	11,622		40,745				1995 Avg	75			
Total 1994:		7,045	4,952	11,997	26,099	10,974		37,073				1994 Avg	72			
Total 1993 ² :		8,019	5,423	13,442	30,113	12,582		42,695				1993 Avg	78			
Total 1992:		6,430	5,124	11,553	24,547	10,243		34,790				1992 Avg	61			
Total 1991:		8,814	5,908	14,722	28,103	11,100		39,203								
Total 1990:		7,339	5,625	12,964	25,936	10,845		36,780								
Total 1989:		6,495	4,753	11,249	22,812	8,845		31,657								

1) Self haul includes cars and trucks. Cars are not weighed at the stations so car tons are estimated based on periodic sampling surveys.

The average weight of cars bringing yard waste is 258 pounds per car based on sampling conducted in 1995.

2) Note that the fairly large increase in tonnage from 1992 to 1993 is due to two factors:

- a) 1992 tonnage was the lowest since 1989 due to the drought and lawn watering ban which extended from June 1 - November 2, 1992.
- b) 1993 tonnage was high due to abundant precipitation in the spring and summer months.

3) Some commercial curbside can/cart organics are included in residential curbside tons. New 10-yr contracts began 3/30/2009. CS (Cleanscapes) and WM (Waste Management) are the contracted haulers.

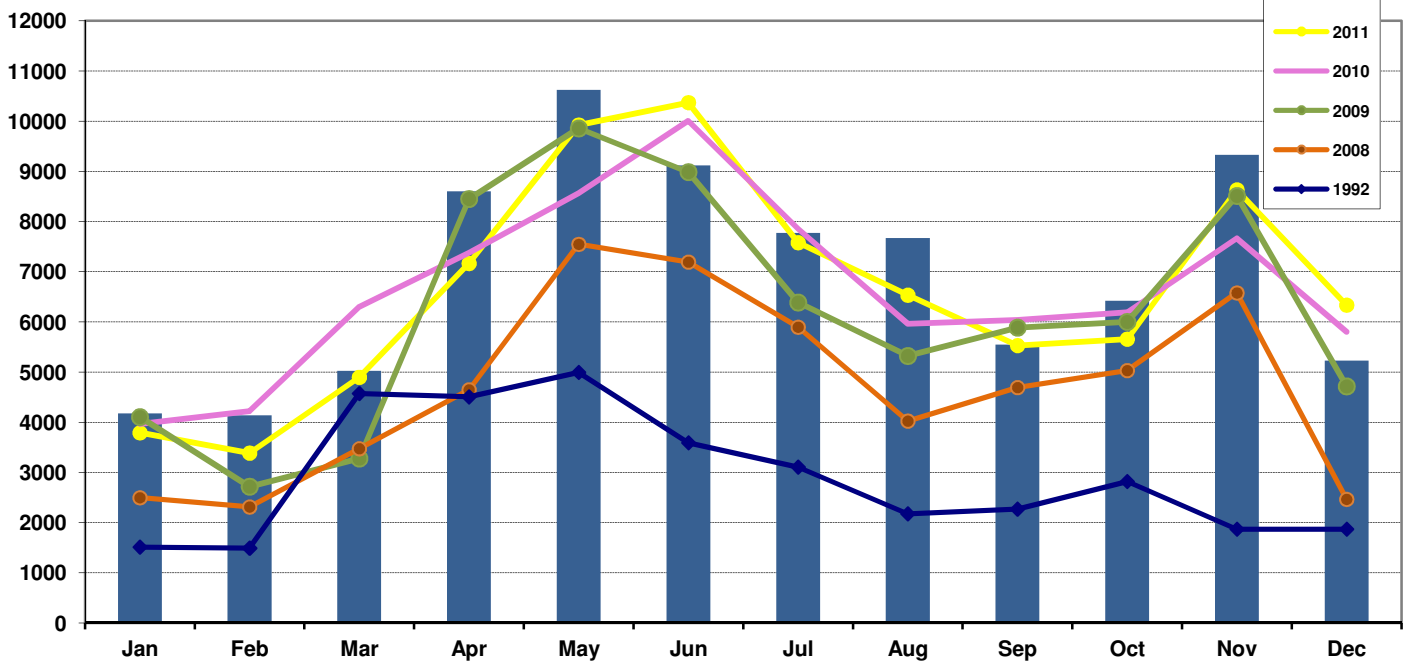
4) This table does not include some commercial non-compost food waste collection such as fats, oils and grease. This additional food waste is captured in our annual recycle survey and in our calculation of Seattle's overall recycling rate. Some Non Contract tons are reported quarterly.

City of Seattle Organics Customers by Customer Category

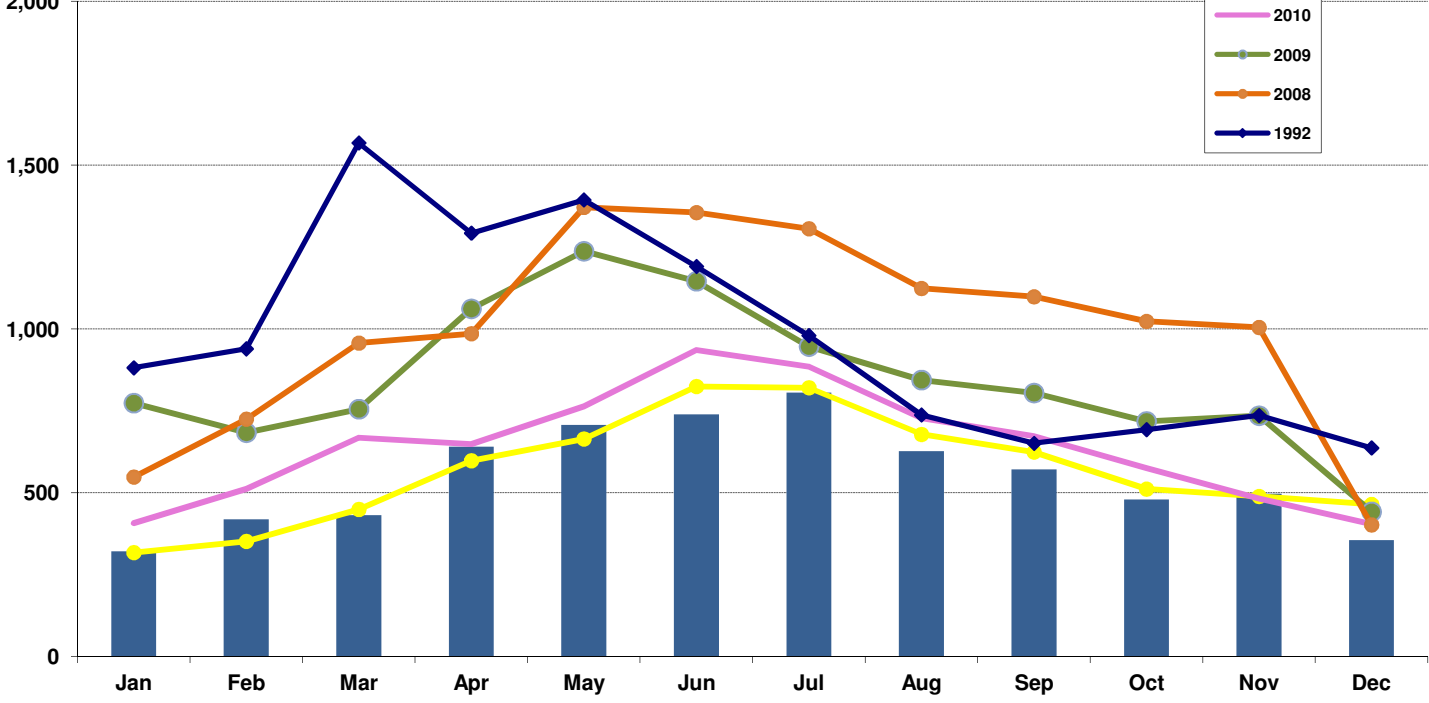
Date	Total Premises ¹		# of Premise Subscribers		Subscription Rate		Can Prems - % Organics Subscriptions by Type						Dumpster Prems - % Organics Subscriptions by Type					
	Can Garb Prems ²	Dumpster Garb Prems ³	Can Prems	Multifamily Dumpster Prems	Total Can Prem Sign Ups	Total Dumpster Prem Sign Ups	13 Gal	32 Gal	90 Gal	Curb Liner	Onsite Liner	Exempt	Not Signed Up	No Liner	Curb Liner	On Site Liner	Exempt	Not Signed Up
Jan-11	146,873	5,347	139,149	2,481	94.7%	46.4%	20.9%	6.6%	66.3%	0.0%	0.0%	4.7%	0.5%	40.5%	4.2%	2.0%	0.3%	53.3%
Feb-11	146,888	5,344	139,378	2,495	94.9%	46.7%	20.9%	6.7%	66.1%	0.0%	0.0%	4.7%	0.4%	40.2%	4.6%	2.2%	0.4%	52.9%
Mar-11	146,986	5,335	139,593	2,535	95.0%	47.5%	21.0%	6.8%	66.0%	0.0%	0.0%	4.7%	0.3%	40.4%	5.2%	2.3%	0.4%	52.1%
Apr-11	146,750	5,332	138,643	2,607	94.5%	48.9%	21.1%	7.0%	66.1%	0.0%	0.0%	4.7%	0.8%	40.2%	6.5%	2.7%	0.5%	50.7%
May-11	146,896	5,319	138,721	2,655	94.4%	49.9%	21.0%	7.1%	66.1%	0.0%	0.0%	4.7%	0.9%	40.2%	7.1%	3.1%	0.5%	49.6%
Jun-11	147,036	5,309	138,865	2,693	94.4%	50.7%	20.9%	7.2%	66.1%	0.1%	0.0%	4.6%	0.9%	40.0%	8.0%	3.4%	0.5%	48.8%
Jul-11	147,136	5,287	139,135	2,828	94.6%	53.5%	20.9%	7.3%	66.1%	0.1%	0.0%	4.6%	0.9%	39.7%	10.1%	4.5%	0.7%	45.8%
Aug-11	147,223	5,281	139,518	3,078	94.8%	58.3%	20.9%	7.4%	66.1%	0.1%	0.0%	4.5%	0.7%	39.6%	14.3%	5.8%	0.9%	40.9%
Sep-11	147,259	5,273	139,735	3,203	94.9%	60.7%	20.9%	7.5%	66.0%	0.1%	0.0%	4.5%	0.6%	39.3%	16.1%	6.8%	1.0%	38.3%
Oct-11	147,180	5,261	137,401	3,322	93.4%	63.1%	21.0%	7.6%	65.9%	0.1%	0.0%	4.5%	2.1%	39.4%	18.0%	7.4%	1.3%	35.6%
Nov-11	147,105	5,255	137,431	3,576	93.4%	68.0%	21.0%	7.7%	65.8%	0.1%	0.0%	4.5%	2.1%	39.9%	21.0%	8.8%	1.6%	30.3%
Dec-11	147,112	5,245	137,581	3,729	93.5%	71.1%	21.1%	7.7%	65.6%	0.1%	0.0%	4.5%	2.0%	40.1%	23.6%	9.7%	1.7%	27.2%
Jan-12	147,070	5,236	137,798	4,871	93.7%	93.0%	21.1%	7.8%	65.5%	0.1%	0.0%	4.5%	1.8%	40.5%	39.8%	15.1%	2.3%	4.7%
Feb-12	147,098	5,231	138,015	4,874	93.8%	93.2%	21.2%	7.9%	65.4%	0.1%	0.0%	4.5%	1.7%	40.4%	39.9%	15.2%	2.3%	4.5%
Mar-12	147,242	5,225	138,245	4,873	93.9%	93.3%	21.3%	8.0%	65.2%	0.1%	0.0%	4.5%	1.6%	40.3%	40.1%	15.3%	2.3%	4.5%
Apr-12	147,344	5,220	138,428	4,940	93.9%	94.6%	21.3%	8.1%	65.2%	0.1%	0.0%	4.5%	1.6%	40.1%	41.4%	15.5%	2.2%	3.1%
May-12	147,522	5,213	138,572	4,938	93.9%	94.7%	21.2%	8.2%	65.3%	0.1%	0.0%	4.5%	1.6%	39.9%	41.6%	15.5%	2.3%	3.0%
Jun-12	147,650	5,208	138,663	4,939	93.9%	94.8%	21.2%	8.3%	65.3%	0.1%	0.0%	4.4%	1.7%	39.7%	41.8%	15.6%	2.3%	2.9%
Jul-12	146,904	5,203	138,653	4,941	94.4%	95.0%	21.1%	8.4%	65.4%	0.2%	0.0%	4.4%	1.2%	39.7%	41.8%	15.8%	2.3%	2.8%
Aug-12	146,971	5,205	138,597	4,945	94.3%	95.0%	21.2%	8.5%	65.3%	0.2%	0.0%	4.4%	1.3%	39.6%	41.8%	15.9%	2.3%	2.7%
Sep-12	147,007	5,207	138,644	4,957	94.3%	95.2%	21.2%	8.6%	65.2%	0.2%	0.0%	4.4%	1.3%	39.7%	41.9%	15.9%	2.2%	2.6%
Oct-12	146,939	5,207	140,183	4,984	95.4%	95.7%	21.7%	8.7%	65.2%	0.2%	0.0%	4.4%	0.2%	39.9%	42.1%	16.0%	2.2%	2.0%
Nov-12	146,894	5,207	140,172	4,985	95.4%	95.7%	21.7%	8.8%	65.1%	0.2%	0.0%	4.3%	0.2%	39.7%	42.2%	16.1%	2.2%	2.0%
Dec-12	147,654	5,206	140,919	4,986	95.4%	95.8%	21.7%	8.8%	65.0%	0.2%	0.0%	4.3%	0.2%	39.6%	42.4%	16.1%	2.2%	2.0%
2012 Avg	147,191	5,214	138,907	4,936	94.4%	94.7%	21.3%	8.3%	65.3%	0.1%	0.0%	4.4%	1.2%	39.9%	41.4%	15.7%	2.3%	3.1%
2011 Avg	147,037	5,299	138,763	2,934	94.4%	55.4%	21.0%	7.2%	66.0%	0.1%	0.0%	4.6%	1.0%	40.0%	11.6%	4.9%	0.8%	43.8%
2010 Avg	146,677	5,369	137,139	2,349	93.5%	43.8%	20.5%	5.9%	66.9%			4.8%	2.3%	41.1%	1.9%	1.3%	0.3%	55.7%
2009 Avg	145,826	5,421	130,844	2,123	89.7%	39.2%	16.9%	1.0%	72.4%			1.9%	7.9%	40.6%	0.0%	0.5%	0.1%	59.0%

1. A Premise is essentially a structure - so a single family house would count as one premise, a tri-plex with 3 housing units counts as one premise and an apartment building with 25 housing units would also count as one premise
2. Can Garb Prems refers to customers that subscribe to can garbage service.
3. Dumpster Garb Prems refers to customers that subscribe to dumpster garbage service. Dumpster Prems are typically Apartment buildings.

CITY OF SEATTLE CURBSIDE ORGANICS Monthly Tons



CITY OF SEATTLE SELF HAUL ORGANICS Monthly Tons



CITY OF SEATTLE RESIDENTIAL CURBSIDE AND SELF HAUL ORGANICS TONS

