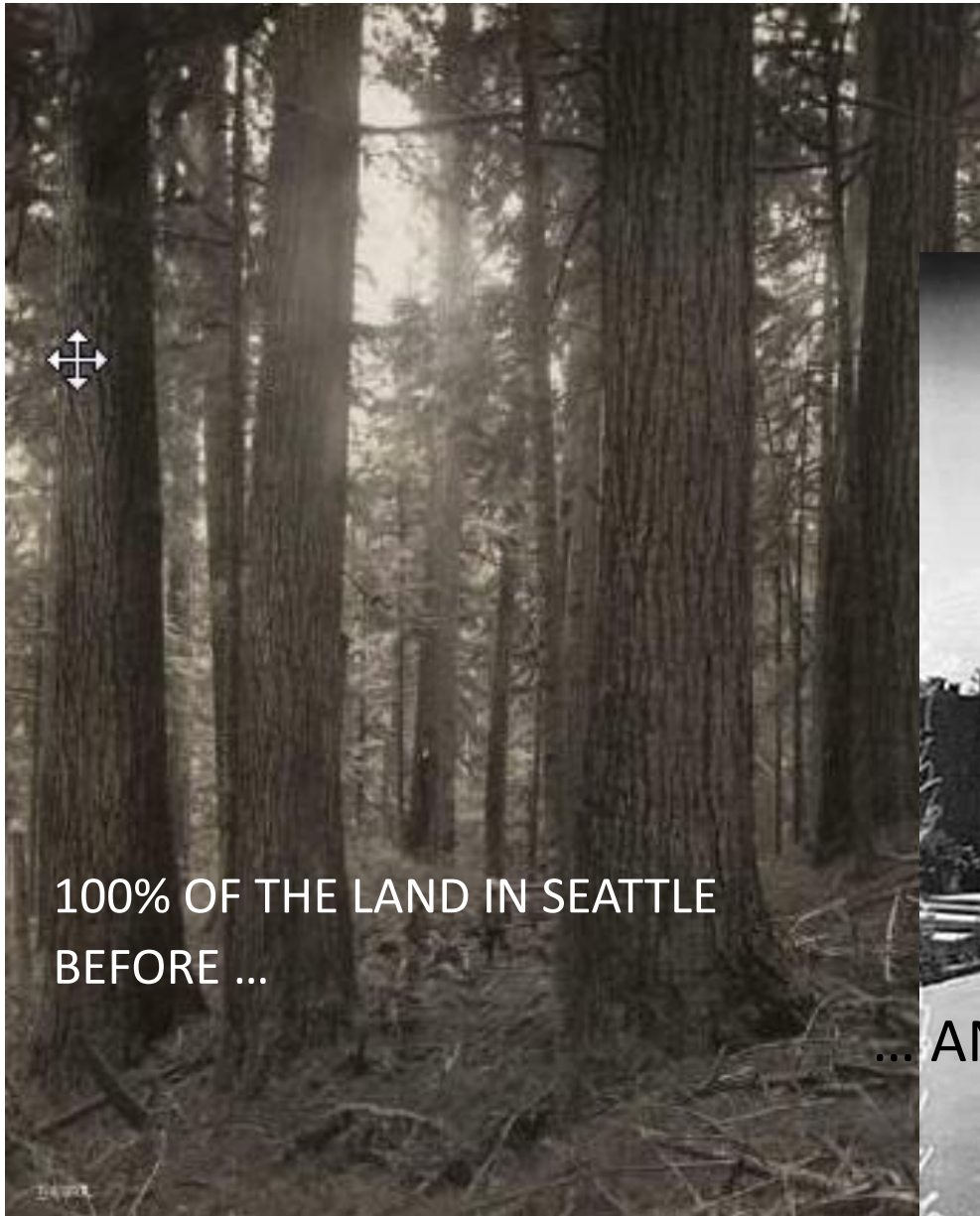




# SEATTLE PUBLIC UTILITIES SEATTLE TRANSPORTATION





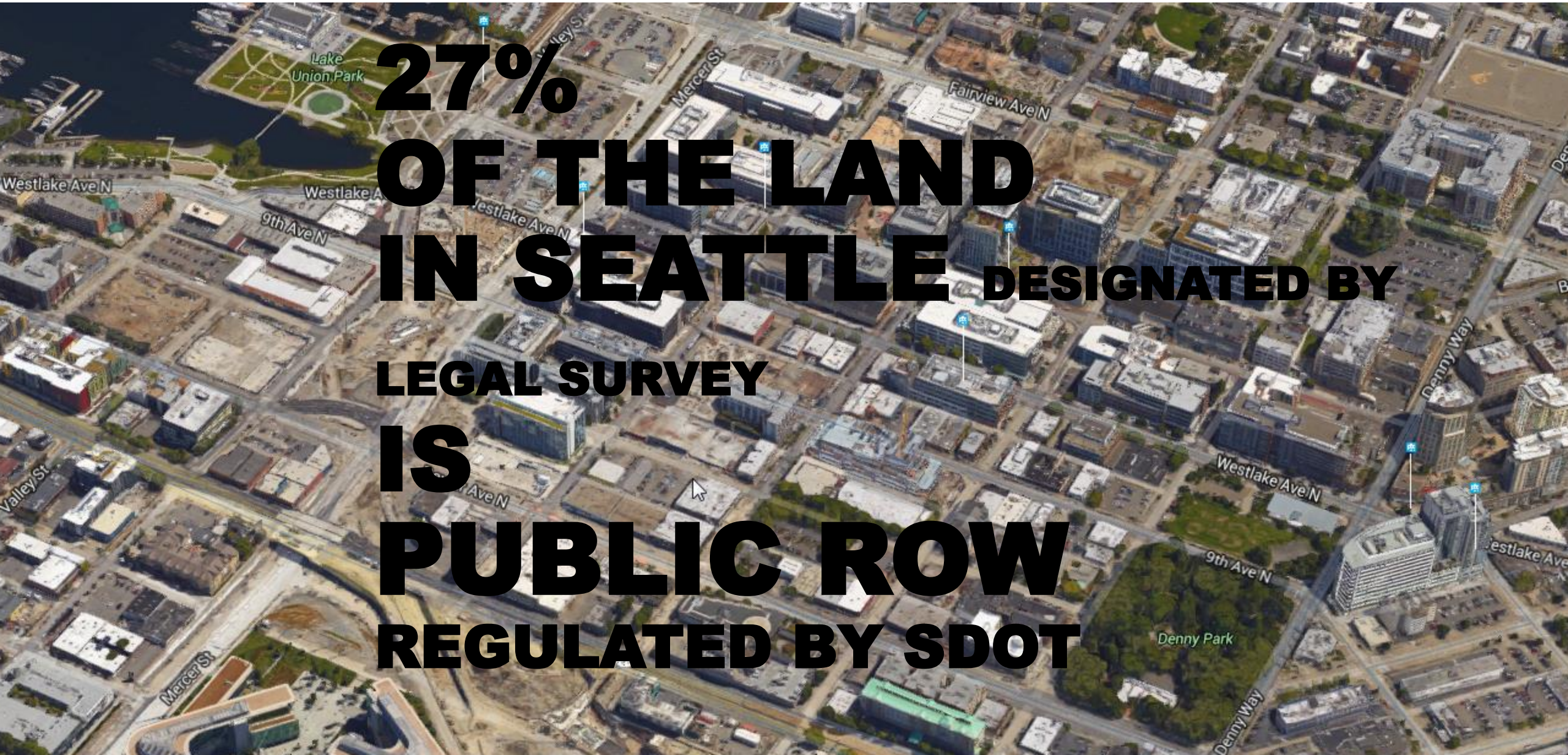


100% OF THE LAND IN SEATTLE  
BEFORE ...



... AND AFTER





**27%**  
**OF THE LAND**  
**IN SEATTLE** DESIGNATED BY  
**LEGAL SURVEY**  
**IS**  
**PUBLIC ROW**  
**REGULATED BY SDOT**



**20% of Seattle is Parks/Open space  
or public owned lands.**

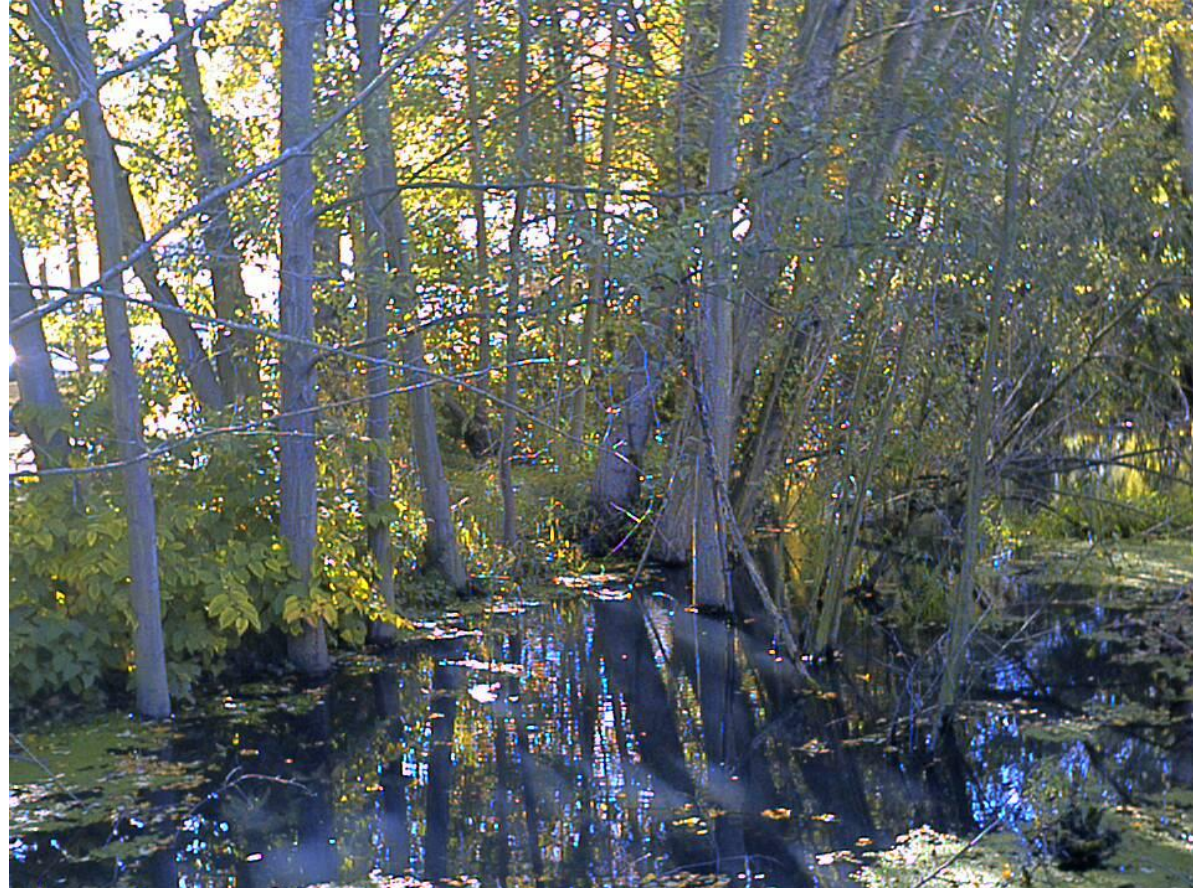
**DESIGNATED BY**

**NATURE**

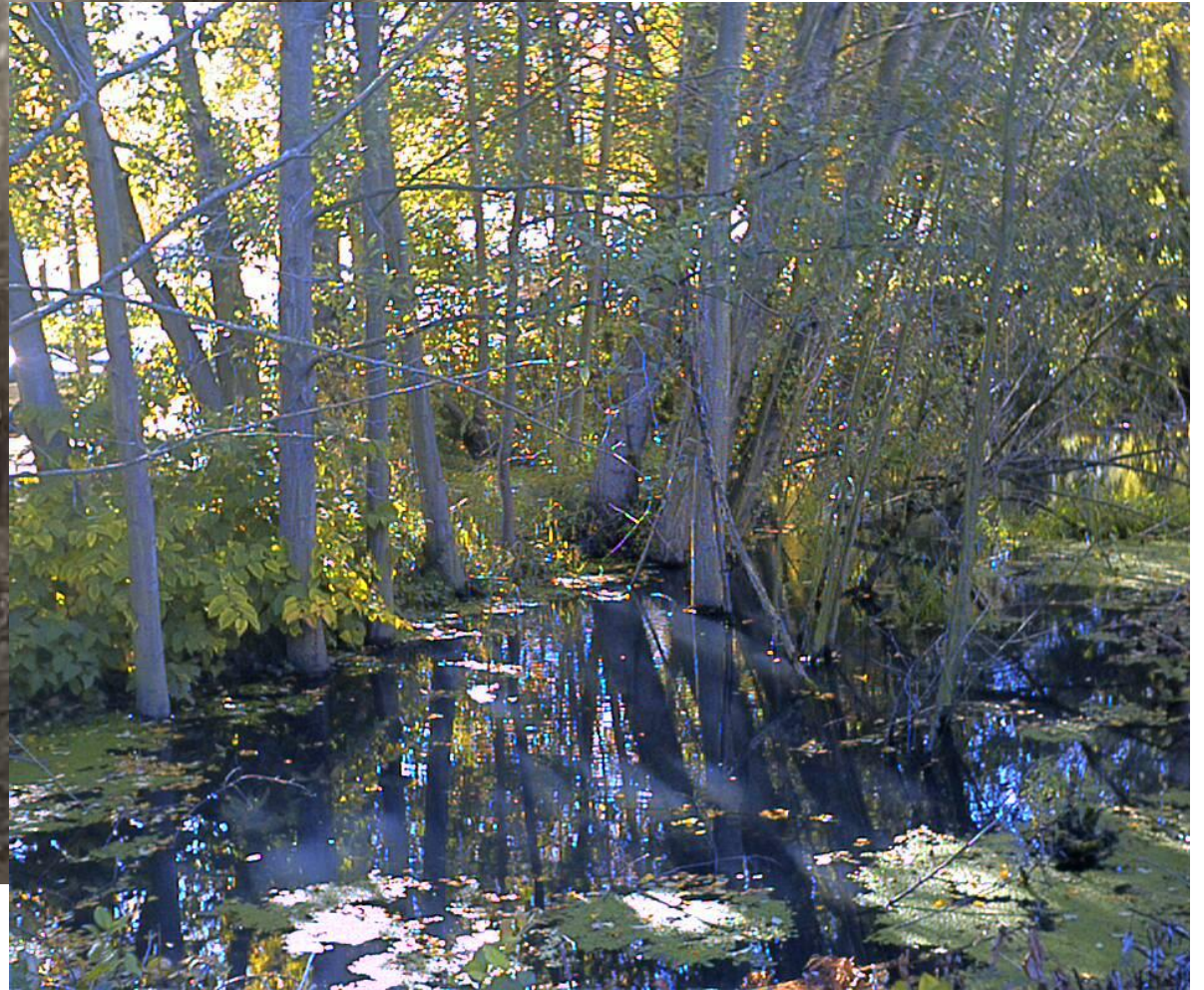
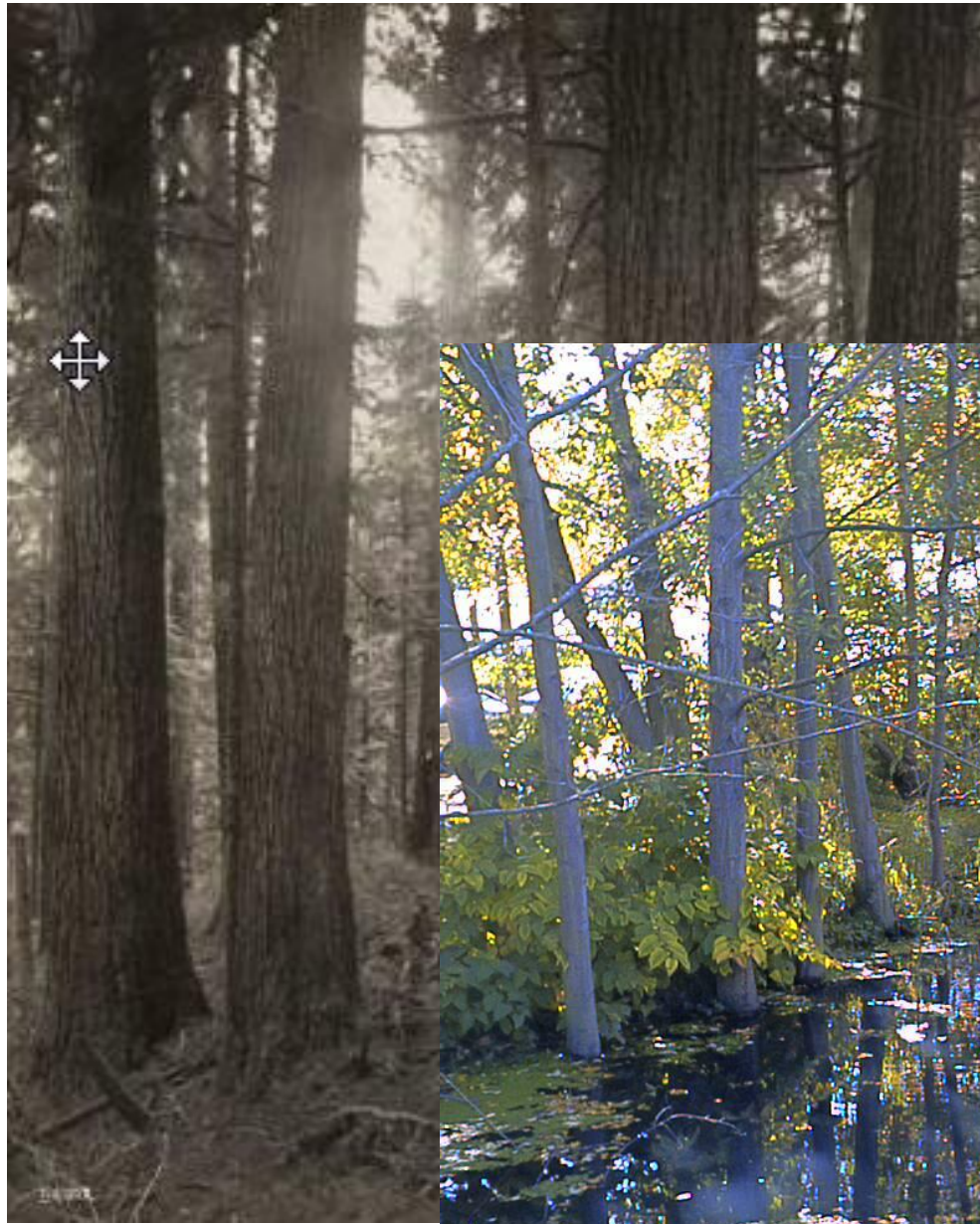
**protected for**

**WATER**

**QUALITY**







FROM FORESTLAND

...AND waters



... TO PATHWAYS  
THROUGH THE  
TREES ...



...and over water.



TO  
TIRE  
TRACKS...



and then to ROADS.





...ROADS, RAILS

& UTILITES, ABOVE & BELOW







**IN PIPES UNDER PAVEMENT  
DESIGNED BY ENGINEERS...**



..OR Through Preserved Forest—TREES, understory, & soil  
**DESIGNED BY NATURE**





# a combination of three methods

...MULTIDISCIPLINARY

1. Preserved Mature Trees & OPEN SPACE,
2. New Trees & Bioretention
3. Detention & Underground Infrastructure





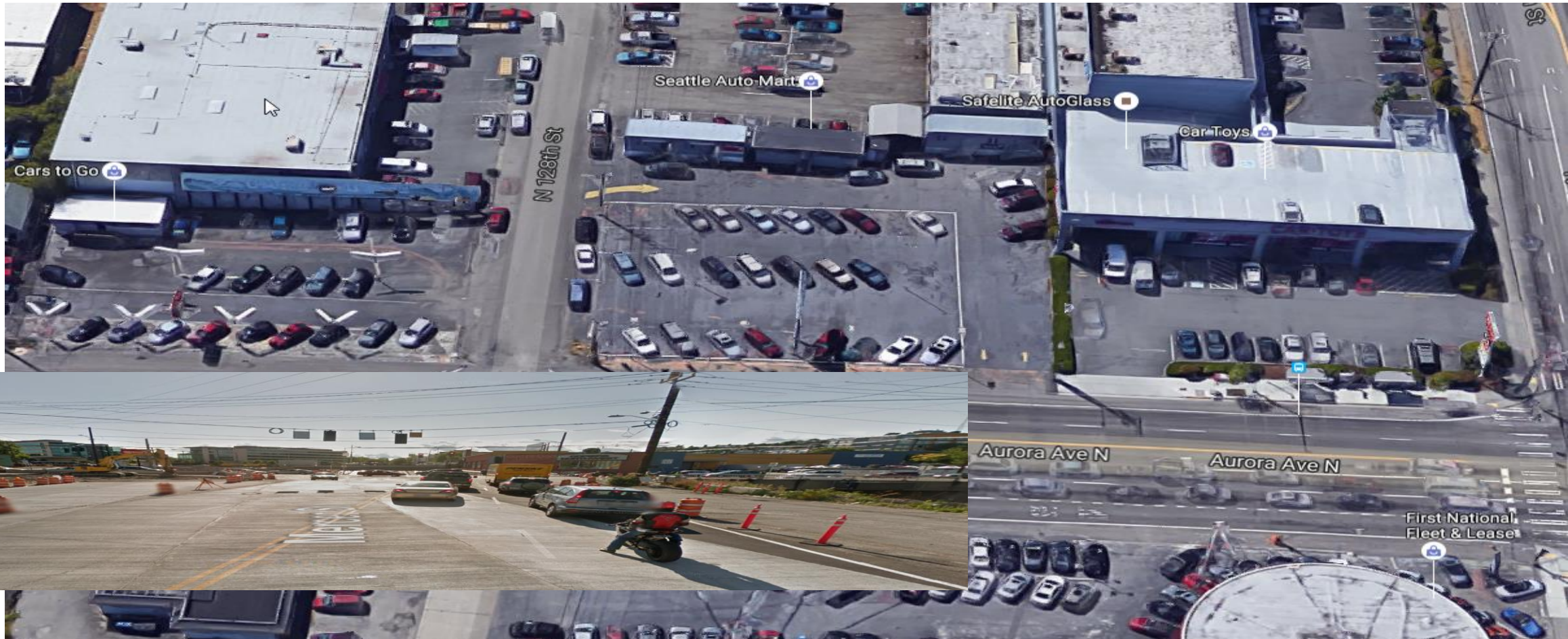
**EXISTING CONDITIONS MATTER**



# URBAN WASTELAND RIPE FOR RENEWAL

**HUGE opportunities: multidisciplinary stormwater & transportation solutions...**

**breaking news!** It's no longer all about the Cars.





# URBAN FOREST OASIS

do no harm...  
retain & protect





# URBAN RESIDENTIAL

GOOD NEIGHBOR POLICY dictates unique, variable  
MULTICULTURAL /MULTIDISCIPLINARY approaches

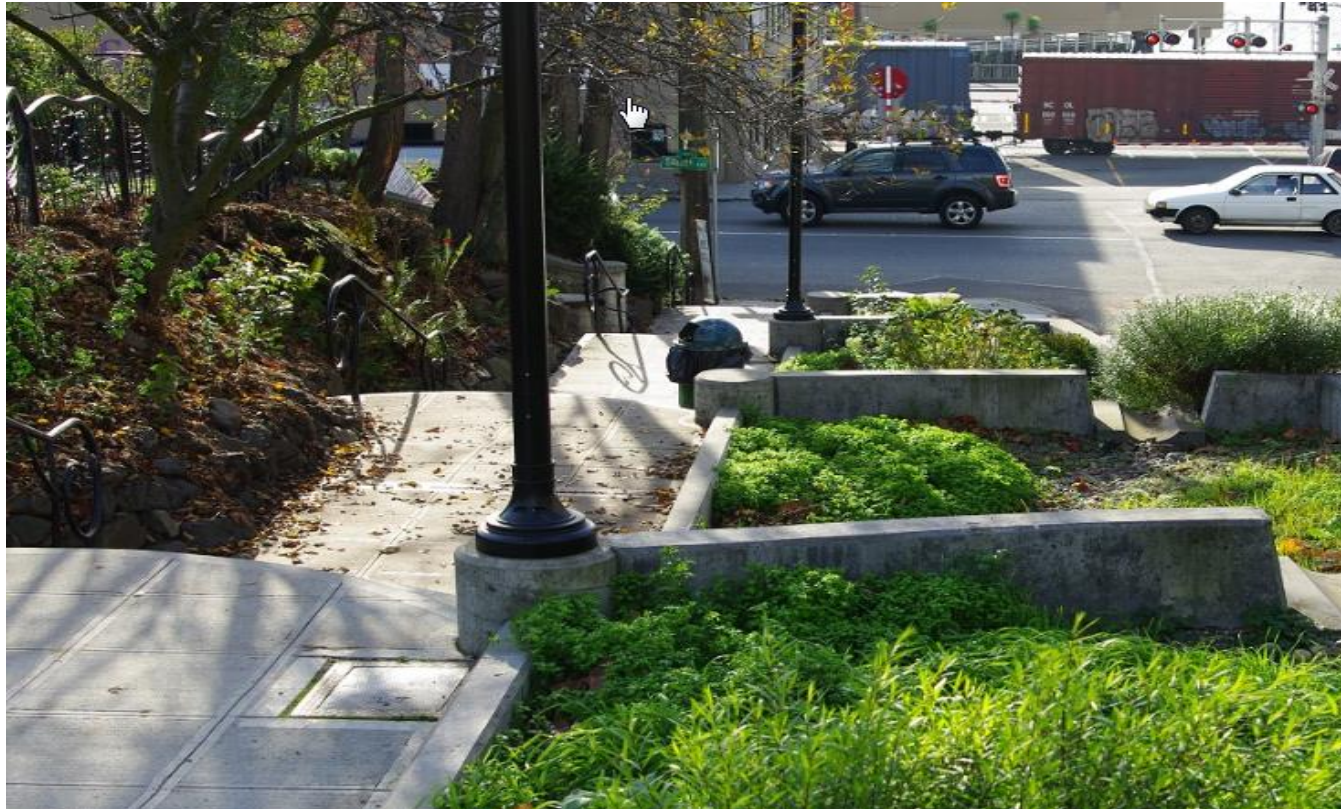




# PROJECTS

PAST --Growing Vine Street

The Ave





# PROJECTS past

SPU Natural Drainage Projects – SeaStreets  
...then Broadview / Pinehurst Green Grid





# PROJECTS present

## SPU projects - Thornton Creek Confluence Floodplain





# PROJECTS **present**– Knickerbocker Floodplain





PROJECTS -  
**present**  
Midvale  
Detention Pond

Forested  
wetland





# PROJECTS

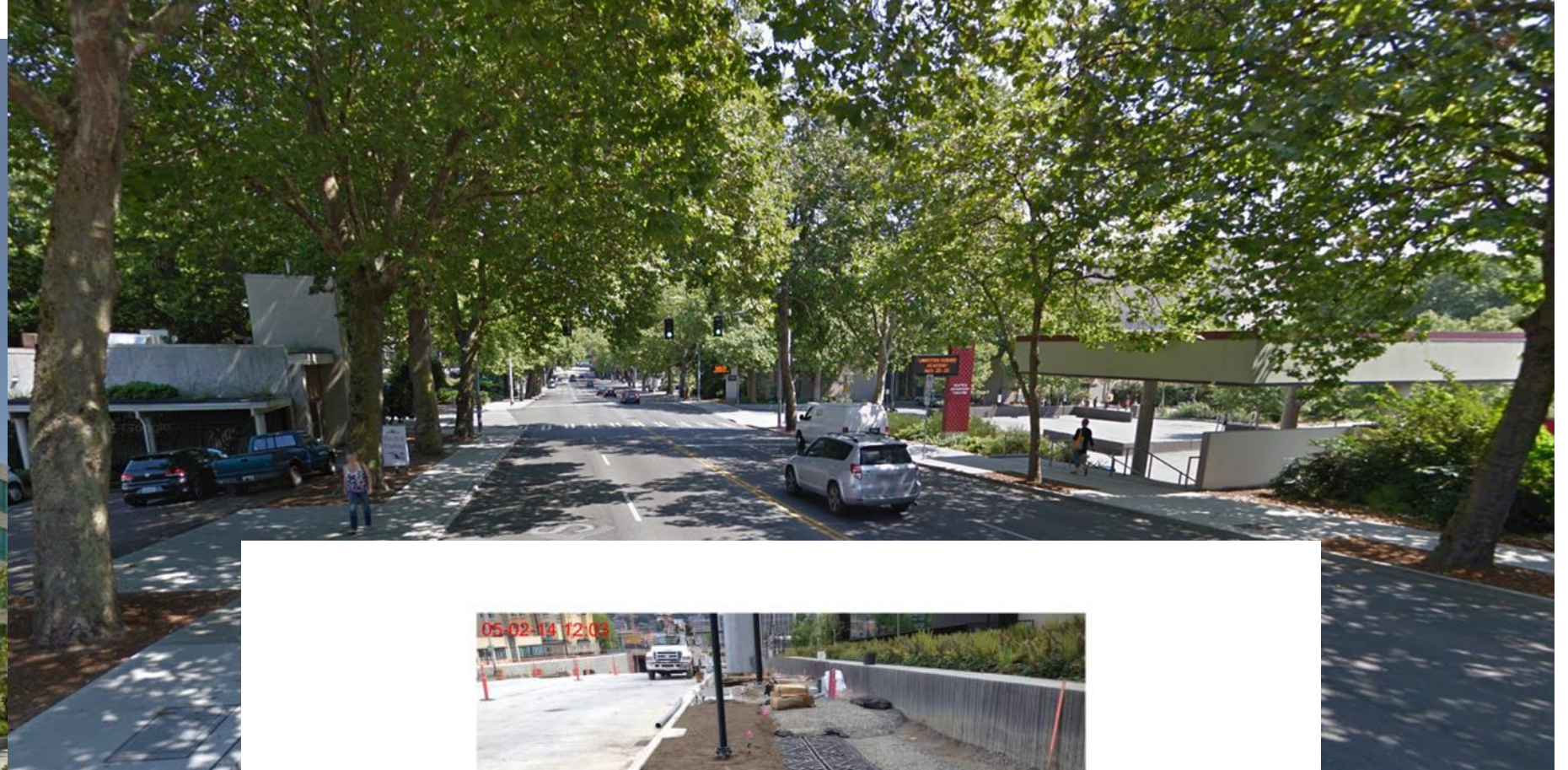
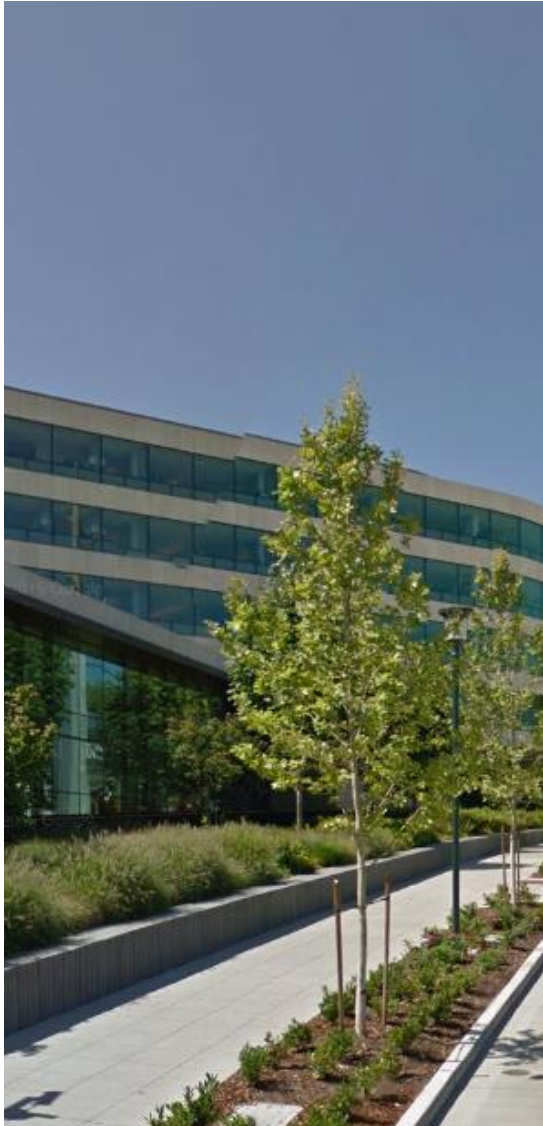
**present** –SPU Natural Drainage Projects  
--Venema Creek, Ballard & Delridge





# PROJECTS

**present** --MERCER CORRIDOR

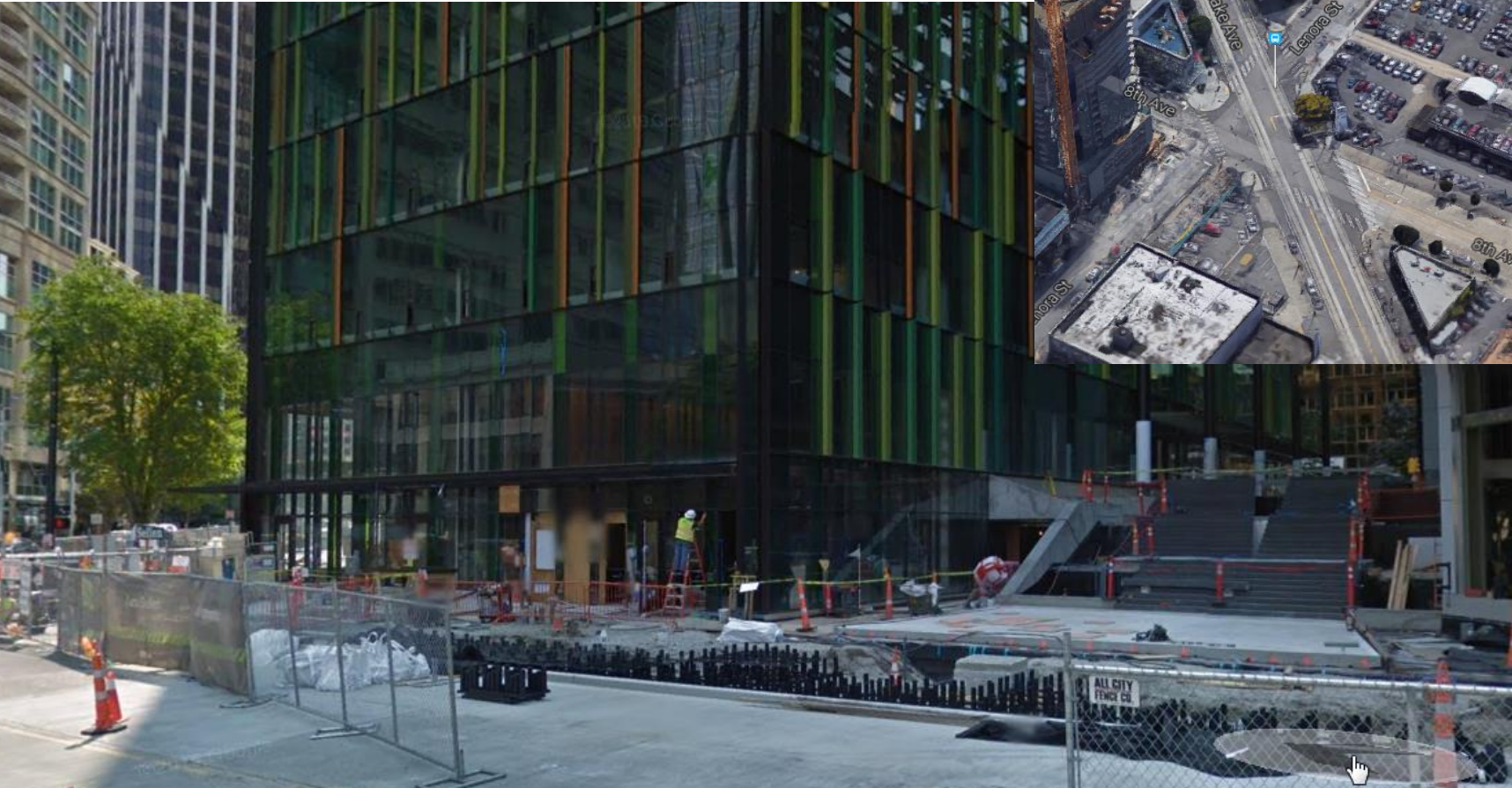
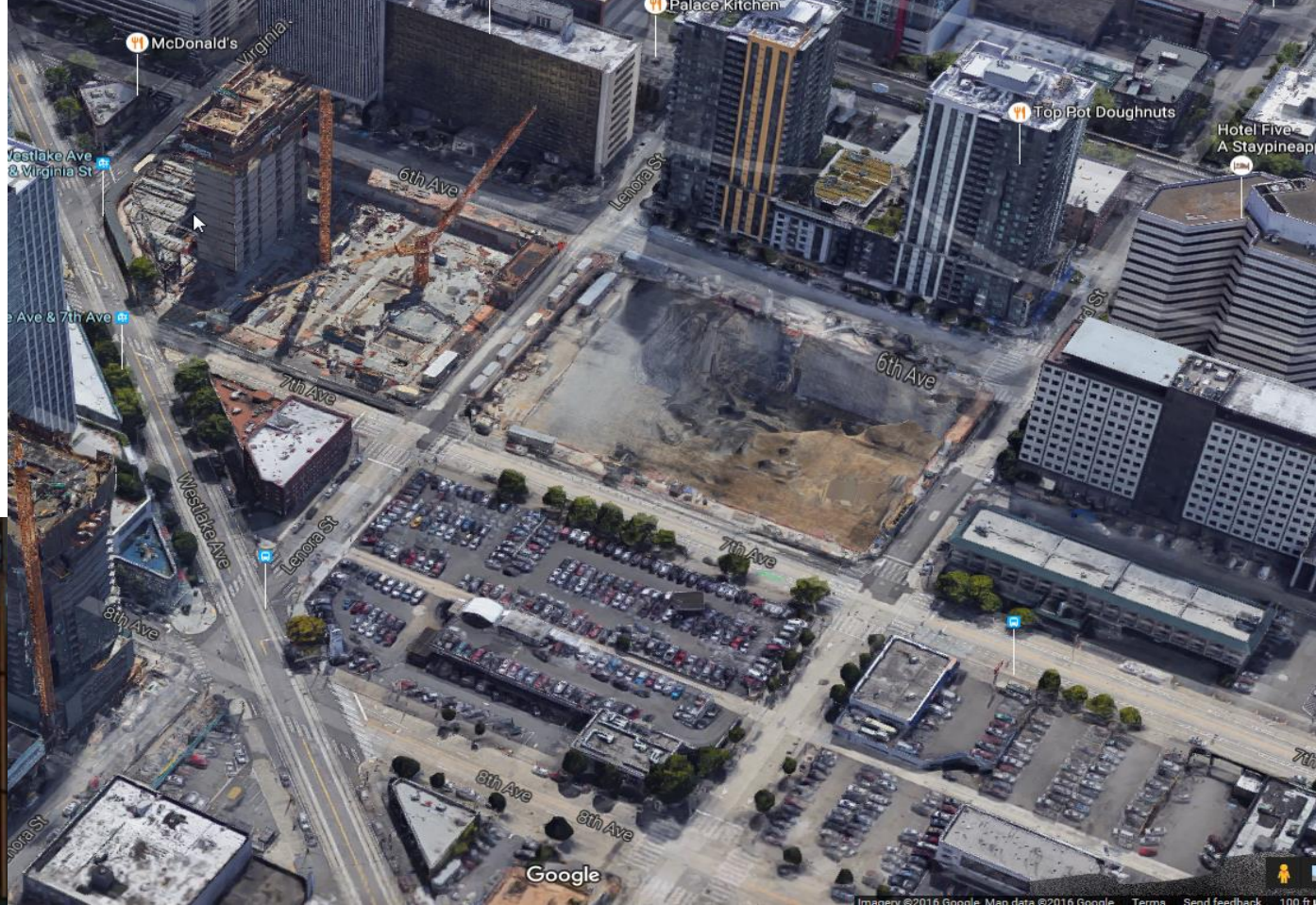




# PROJECTS

PRESENT

--AMAZON / SOUTH LAKE UNION





# PROJECTS

## FUTURE – SEATTLE CENTRAL WATERFRONT



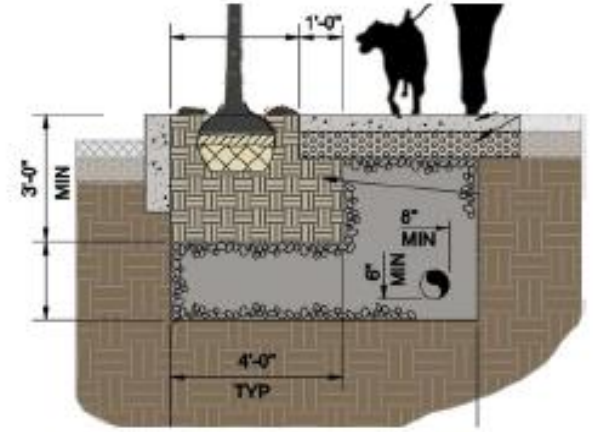


# PROJECTS

## FUTURE – SEATTLE CENTRAL WATERFRONT



**Newly planted trees** provide flow control in an urban environment by absorbing rain through their leaf system and roots, and allowing space for infiltration. Newly planted trees receive credits toward meeting flow control requirements.



**Enhanced Tree Pits** give trees roots more space allowing for large tree growth.





# PROJECTS

FUTURE – SR 520





# **TREES** the COMMON DENOMINATOR



11/4/2000





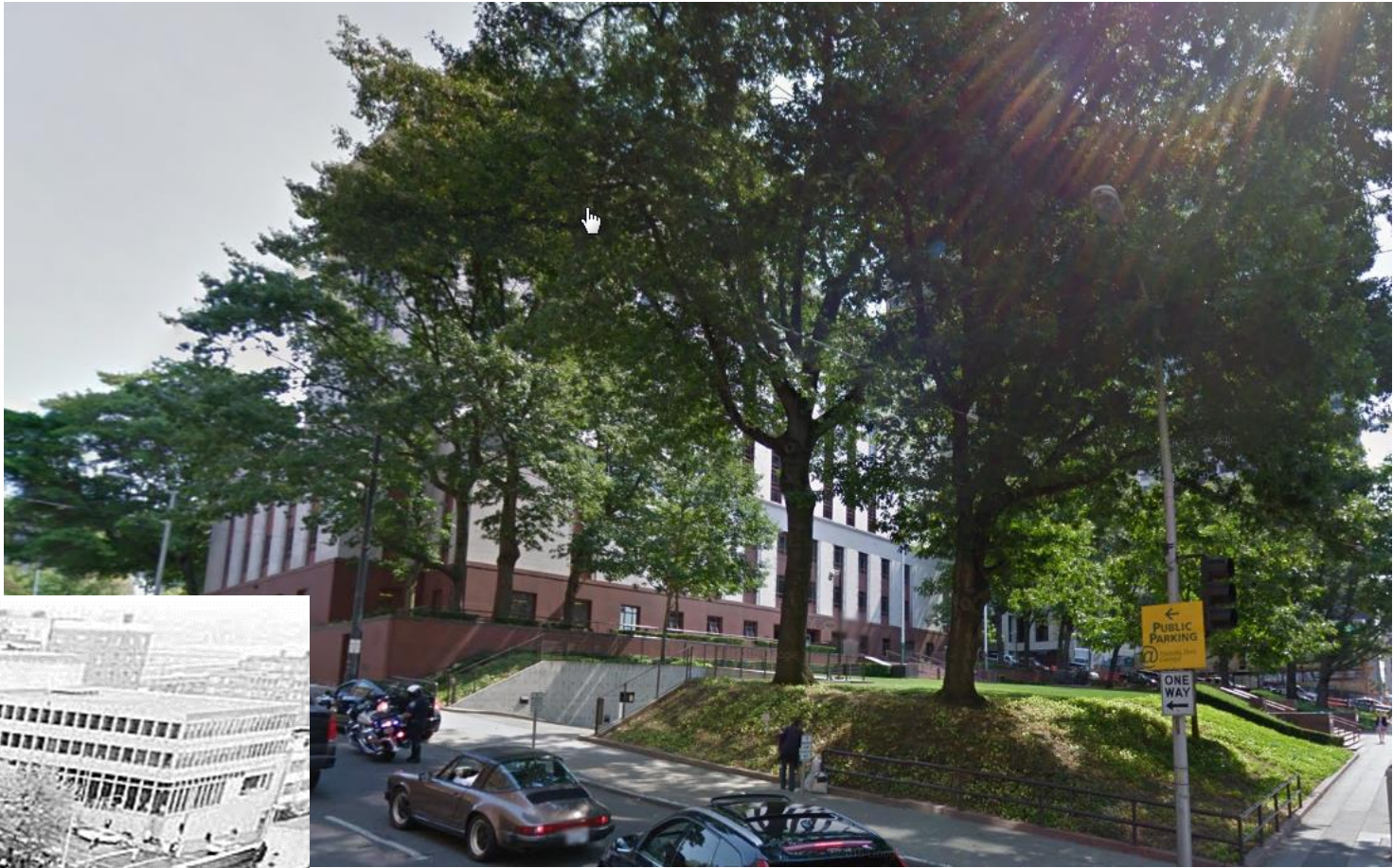


# **SDOT TRANSIT** makes room for TREES





THE FEDERAL  
GOVERNMENT  
...makes room for  
**TREES**





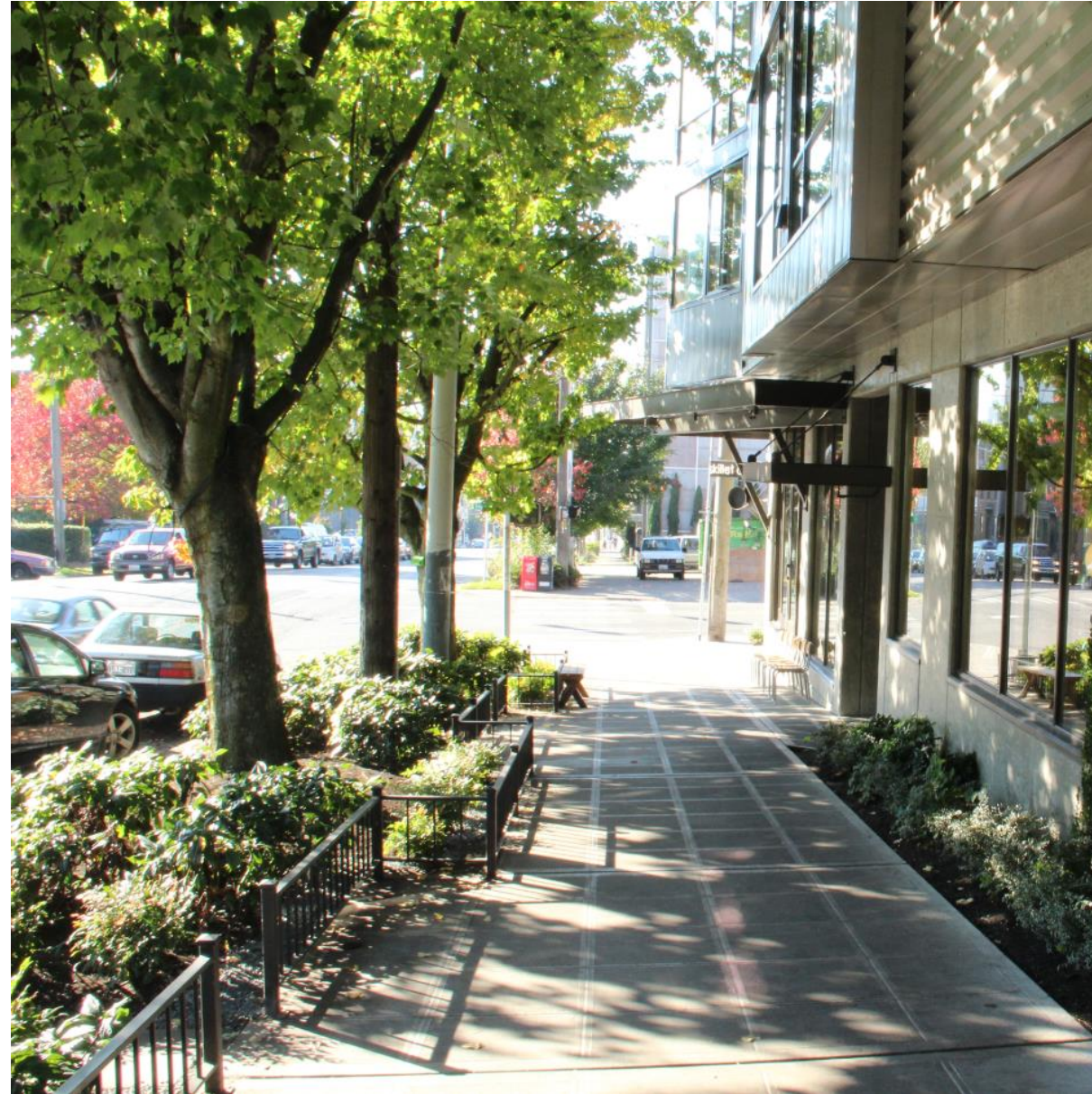
THE FEDERAL  
GOVERNMENT  
...makes room for  
**TREES**





# NEW ORDINANCES

PRIORITIZE  
&  
PROTECT  
**TREES**





# NEW CONSTRUCTION PROTECTS TREES

Seattle Department of  
Transportation

sdot

CAM

Client Assistance Memo

2307

Seattle Permits

— part of a multi-departmental City of Seattle series on getting a permit.

## Public Notice Posting for Street Trees

Effective 1/1/2012

The City of Seattle Department of Transportation (SDOT) requires posting for street trees as public notice regarding the preservation of and /or removal and replacement of existing trees in the public Right-of-Way (ROW).





# NEW CONSTRUCTION PROTECTS TREES





# STREET TREES

&

deciduous

# DOMINANCE





# STREET TREES

## & THE CHALLENGE TO LIMIT **SMALL SPECIES**

deciduous

# DOMINANCE



Styrax japonicus  
Japanese snowbell



Styrax japonicus  
Japanese snowbell





# CONIFERS WHEREEVER / WHENEVER WE CAN





**SOIL** not **DIRT**









