



Grow Smart, Grow Safe®

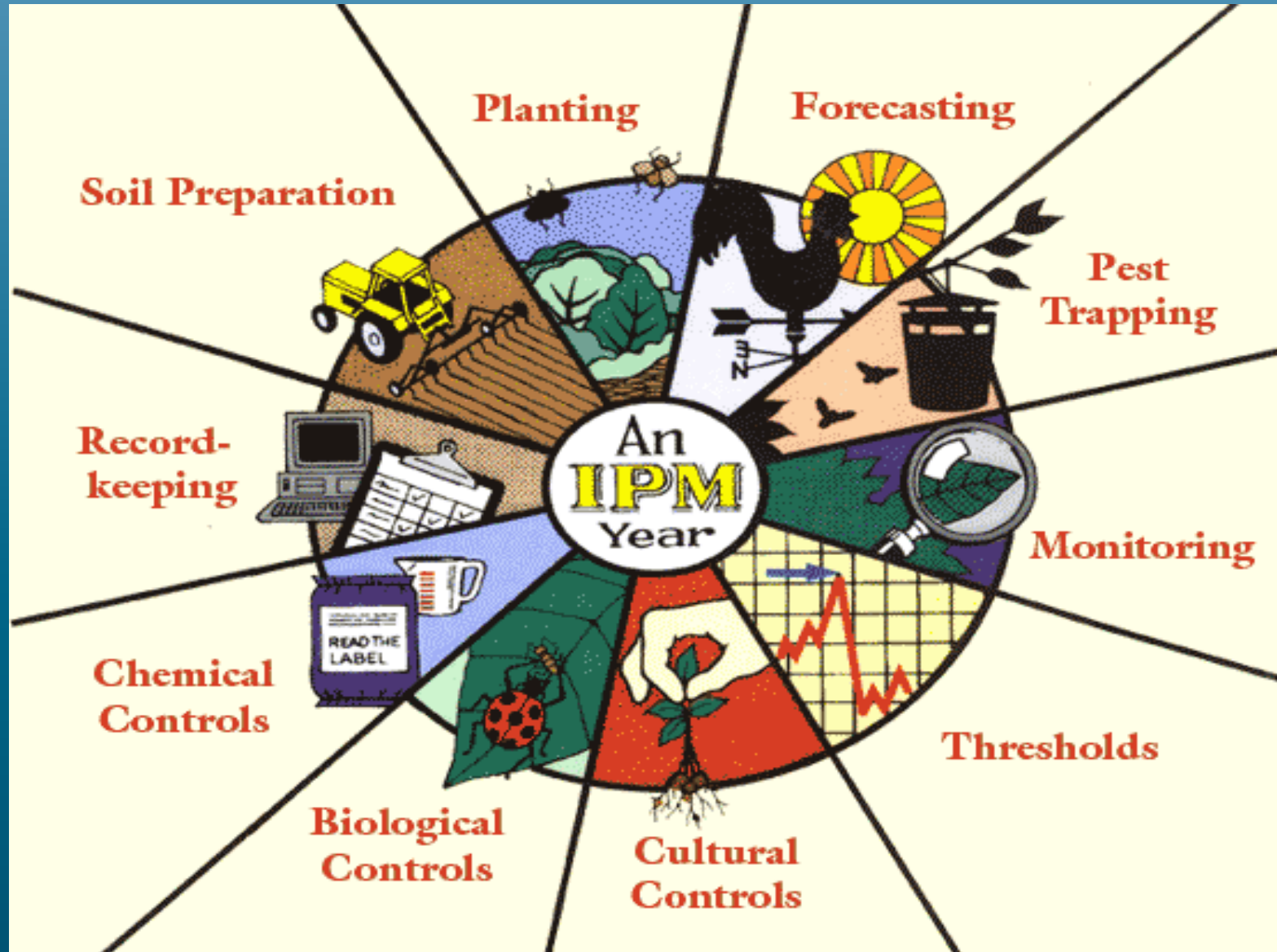
*An iPhone App for choosing
safer lawn & garden products*



**Local Hazardous Waste
Management Program
in King County, Washington**

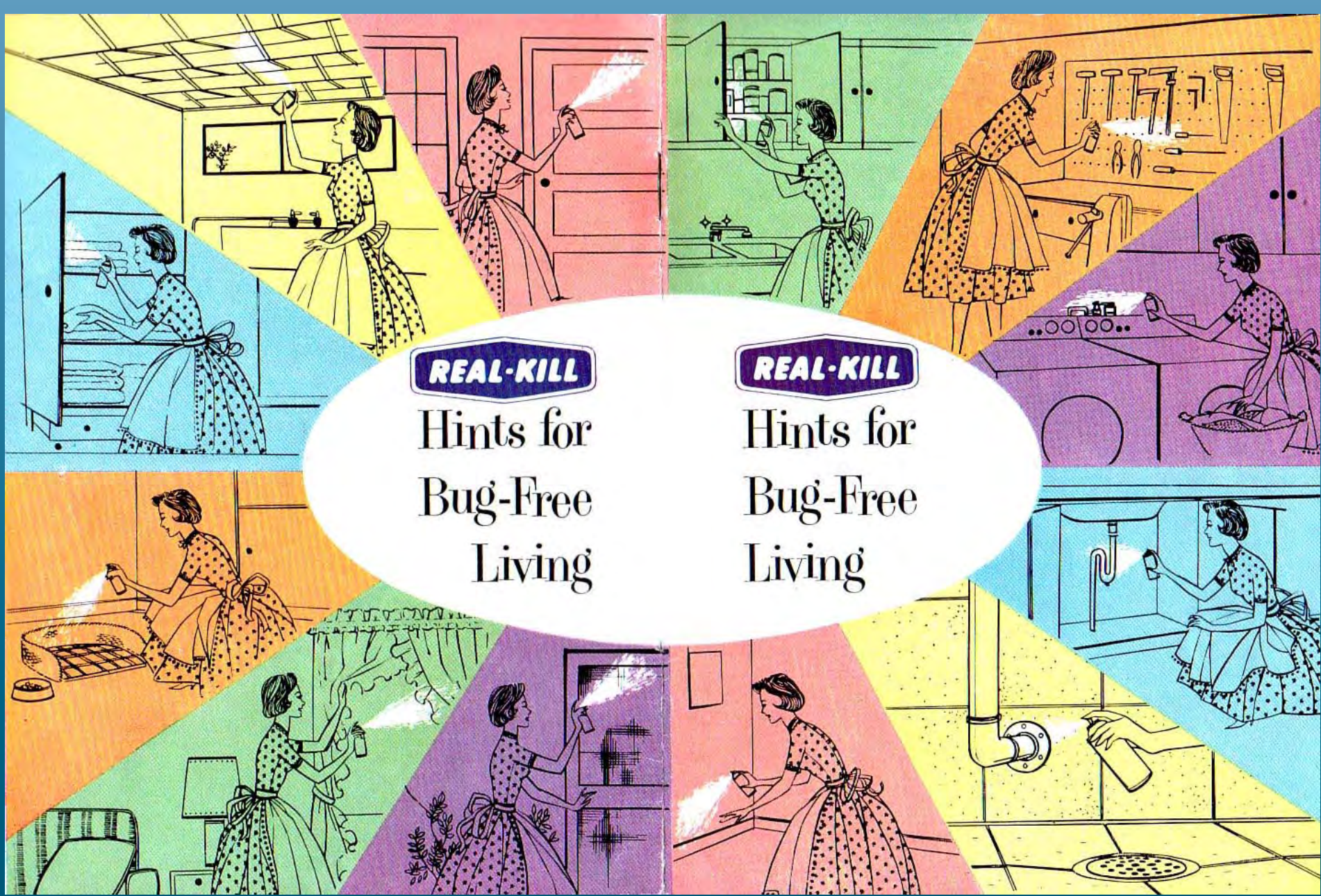


IPM Cycle





<http://floridapestcontrolcompanies.com/tag/pest-control>



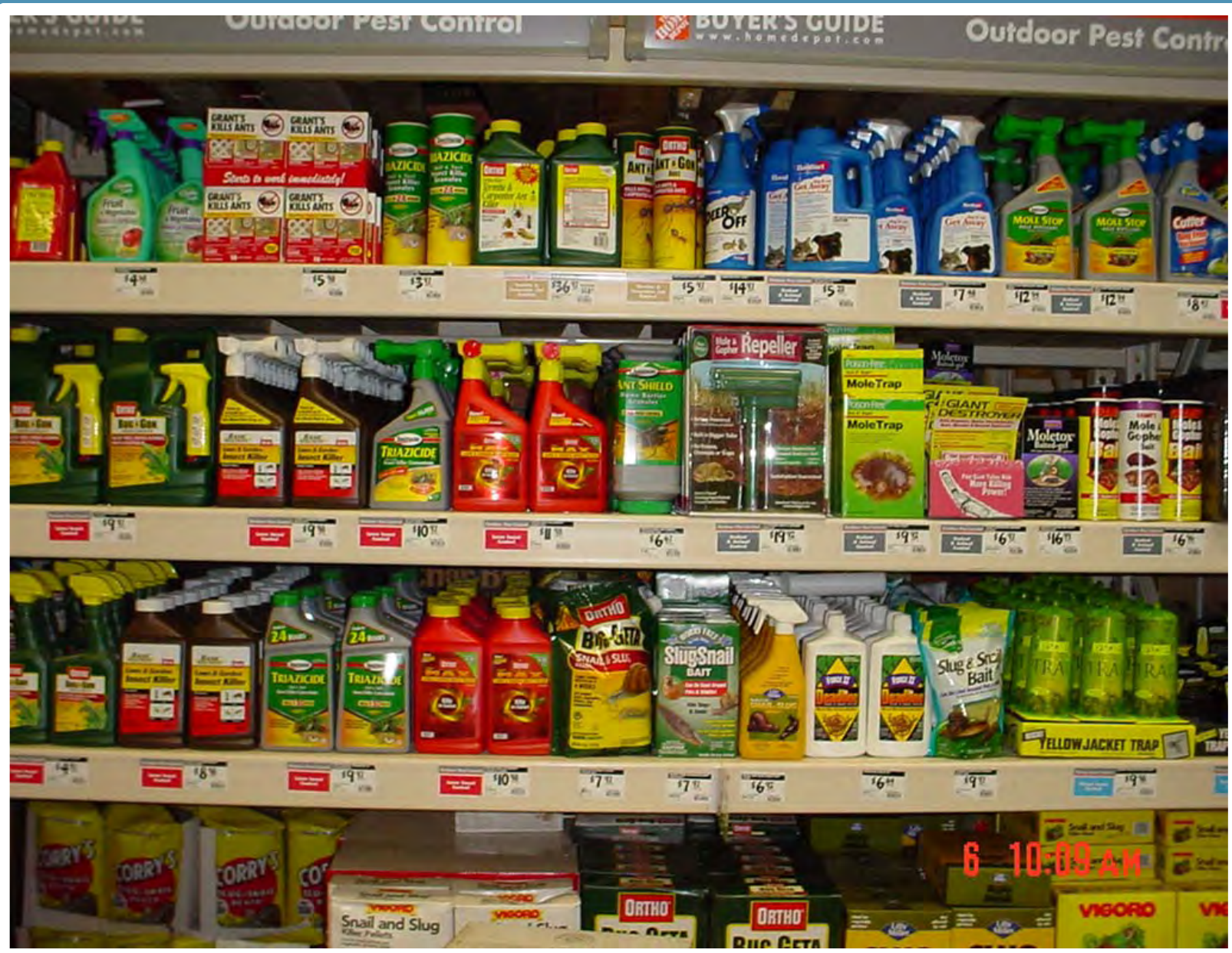
REAL-KILL

Hints for
Bug-Free
Living

REAL-KILL

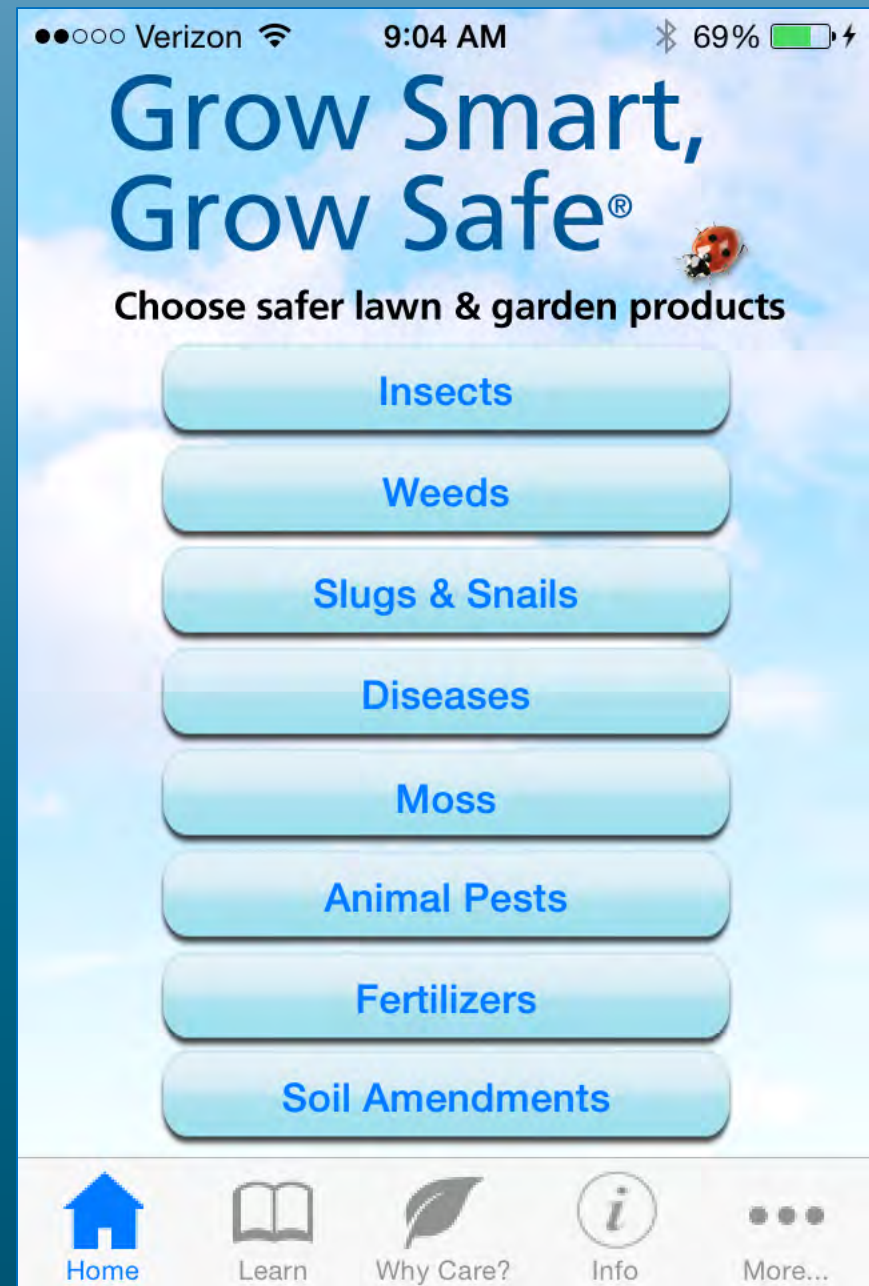
Hints for
Bug-Free
Living

HOW DO YOU DECIDE?



What we do

- Review scientific research
- Shelf surveys
- IPM – ID pest
- Verify registrations
- **SIMPLIFY**



More on IPM and our science

- WSU PICOL
- Thurston County
- EPA & other sources



Grow Smart, Grow Safe® Why Care?

Why care about using pesticides?

Pesticides include some of the most hazardous chemicals used at home. Products that kill pests can be hazardous to children, pets, birds, fish, and other wildlife.

Buying safer products will encourage manufacturers to make safer and more environmentally sound products. Using non-toxic products will help protect your family, your pets and your local streams.

Pesticides, human health and the environment

Pesticides can be carried inside on shoes and mix with house dust. Young children,



Home



Learn



Why Care?



Info



More...

Who's using Grow Smart?

- Thurston County
- Portland OR
- King County
- Master Gardeners
- ecoPRO – Certified Sustainable Landscape Pro Program
- Vashon & Maury Islands
- McClendon's / Seattle Tilth
- *Organic Land Care – Oregon Tilth*
- *Seattle recert training*
- *Green Gardening*

Let's try it!



Weed-b-gon

PRODUCT NAME	Human Toxicity	Pet & Wild Life	Aquatic Life	Water Pollution	ACTIVE INGREDIENTS
Moderate hazard					
Ortho® Weed-B-Gon® Chickweed, Clover and Oxalis Killer for Lawns	●	●	●	●	triclopyr TEA (triethylamine salt)
Highest hazard					
Ortho® Weed-B-Gon® Crabgrass Killer for Lawns	●	●	●	●	calcium acid methanearsonate (CAMA)
Ortho® Weed-B-Gon® MAX™ plus Crabgrass Control	●	●	●	●	quinclorac , MCPP-p (mecoprop-p) , 2,4-D DMA (dimethylamine salt)
Ortho® Weed-B-Gon® MAX™ Weed Killer For Lawns RTU	●	●	○	●	2,4-D acid , MCPP-p (mecoprop-p) , dicamba
Ortho® Weed-B-Gon™ plus Crabgrass Control	●	●	●	●	2,4-D DMA (dimethylamine salt) , quinclorac , dicamba dimethylamine salt
Ortho® Weed-B-Gon® Crabgrass Killer for Lawns Concentrate	●	●	●	●	calcium acid methanearsonate (CAMA)
Ortho® Weed-B-Gon® MAX™ Concentrate plus Crabgrass Control for Lawns	●	●	●	●	2,4-D acid , quinclorac , dicamba
Ortho® Weed-B-Gon® MAX™ Weed Killer For Lawns Concentrate	●	●	●	●	MCPA acid , triclopyr TEA (triethylamine salt) , dicamba dimethylamine salt
Ortho® Weed-B-Gon® Weed Killer for Lawns Concentrate	●	●	●	●	MCPA dimethylamine salt , triclopyr TEA (triethylamine salt) , dicamba dimethylamine salt

Highest hazard

Ortho® Weed-B-Gon® Crabgrass
Killer for Lawns

calcium acid methanearsonate (CAMA)

Ortho® Weed-B-Gon® MAX™ plus
Crabgrass Control

quinclorac, MCPP-p, 2,4-D DMA

Ortho® Weed-B-Gon™ plus
Crabgrass Control

2,4-D DMA, quinclorac, dicamba
dimethylamine salt

Pesticide Active Ingredient	Thurston County Rating								
		Human Toxicity	Other Mammals	Bird Toxicity	Bee Toxicity	Aquatic Toxicity	Mobility Hazard	Persistence Hazard	Bio-accumulation Hazard
calcium acid methanearsonate (CAMA)	Failed	■	◆	●	●	●	●	■	●
quinclorac	Failed	◆	●	■	◆	●	■	■	◆
dicamba dimethylamine salt	Conditional	●	●	●	◆	◆	■	●	◆
2,4-D DMA (dimethylamine salt)	Failed	■	●	●	◆	◆	■	●	◆

Manage weeds naturally

Prevent weeds with compost and mulch.

Compost improves soil. Add it on top or mix it in. Good soil grows healthy, vigorous plants. Healthy plants crowd out weeds. Weeds are easier to pull in healthy soil.

Use mulch. A thick layer of mulch is your best defense against weeds. Keep a few inches of bare space around stems and crowns of plants to prevent diseases. Mulch helps cover weed seeds, preventing them from germinating.

Grow a healthy lawn. Sunlight and healthy soil are important for healthy grass. A thick, vigorous stand of turf will shade out most weeds. See [Natural lawn care](#) for tips to grow a great lawn!

Allow a few weeds in your lawn. Many "weeds" like clover or daisies improve the soil and add interest.

Grow a multilayered garden. A variety of plants will shade the ground in garden beds. Without sun fewer weeds will sprout, and any that do will be less noticeable.

Use mulch in garden beds. A thick layer of mulch is your best defense against weeds. Mulch keeps weed seeds from germinating by blocking light. Keep a few inches of bare space around stems and crowns of plants to prevent diseases.



Use weeding tools. Tools are safer than herbicides. Hand weeding doesn't harm other plantings. Tools won't poison you or pollute rivers and streams.

Use heat to manage weeds. Heat is especially useful on patios and paths. Boiling water will kill many young weeds. Check with local experts about safe use of heat for killing weeds.

Weed and feed is a pesticide!

Weed and feed contains weed-killing chemicals along with fertilizer. Spreading it over the whole lawn wastes money and risks harming people, pets, wildlife, groundwater and local rivers and streams.



Summary

- GS is an IPM tool to help you decide if, and if so which, pesticide to use
- Because of the science used, it is being used in decision making processes for programs in several locations and agencies
- We'd like to hear if it's become part of your process

Grow Smart, Grow Safe®



Choose safer lawn & garden products

www.growsmartgrowsafe.org

[Download Grow Smart on the App Store™](#)

QUESTIONS?

More Information

- Lisa Niehaus 206-263-3046
lisa.niehaus@kingcounty.gov
- www.growsmartgrowsafe.org
- iTunes: Grow Smart App
- 2015
 - Mobile website
 - Android and more
 - Print versions