



23rd Ave E

Vision Zero

Our vision, mission, and core values

Vision: Seattle is a thriving equitable community powered by dependable transportation

Mission: to deliver a transportation system that provides safe and affordable access to places and opportunities

Committed to **6 core values:**

- Equity
- Safety
- Mobility
- Sustainability
- Livability
- Excellence

Presentation overview

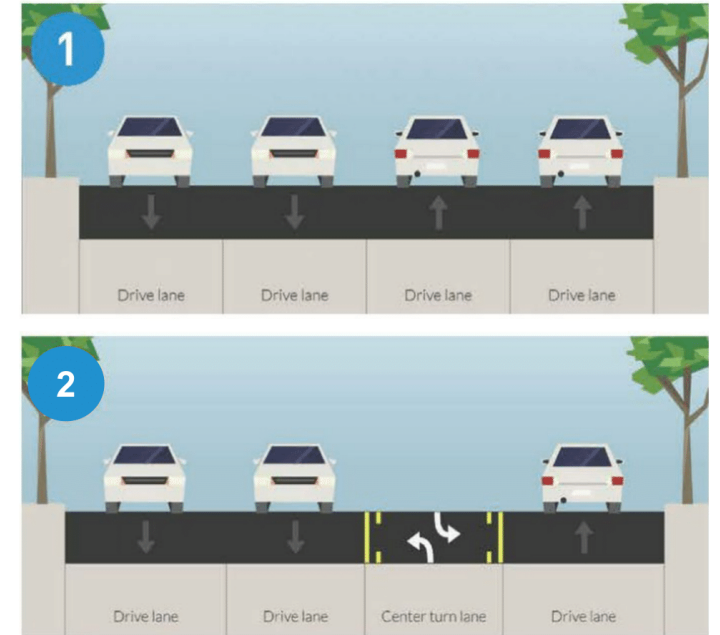
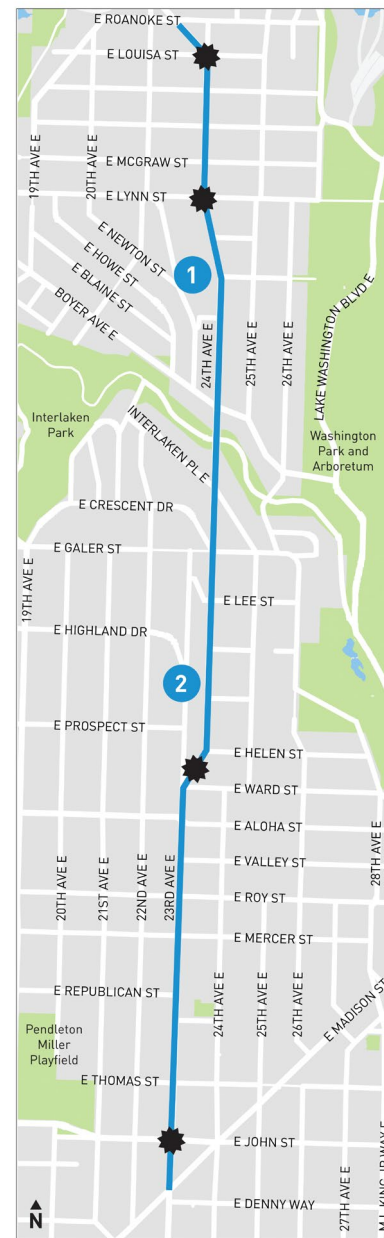
- Project background
- Project area
- Timeline
- What to expect during construction
- How to stay up-to-date



24th Ave E near Turner Way E, looking north

Project overview

- 23rd Ave E/24th Ave E provides access to Montlake, SR 520, and the Montlake Bridge crossing into North Seattle
- This project is a part of our Vision Zero efforts to reach zero traffic deaths and serious injuries by 2030
- Lane Re-channelization (2018)
- Crossing and Transit Stop Improvements (2021-22)

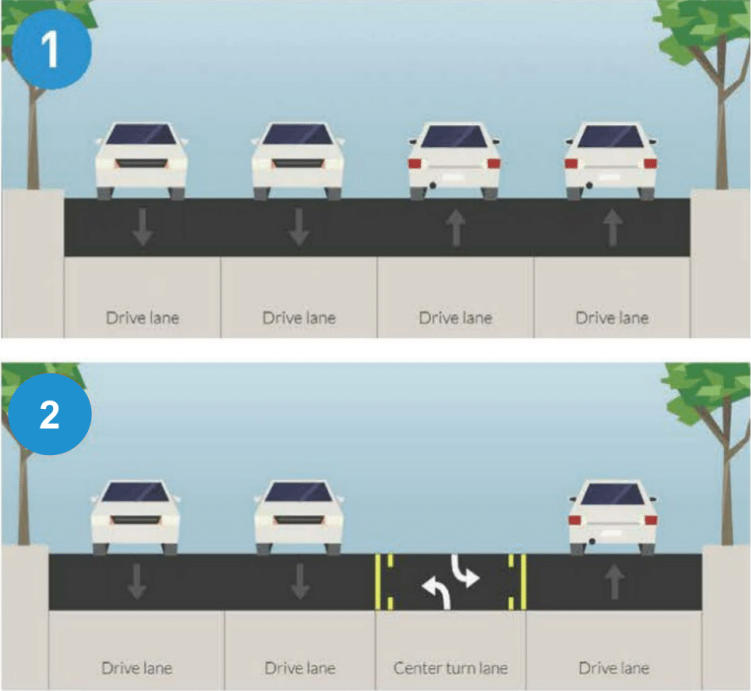


- 1 No Changes to Road Channelization (Boyer Ave E to E Roanoke St)
- 2 Rechannelized Roadway (E John St to Boyer Ave E)

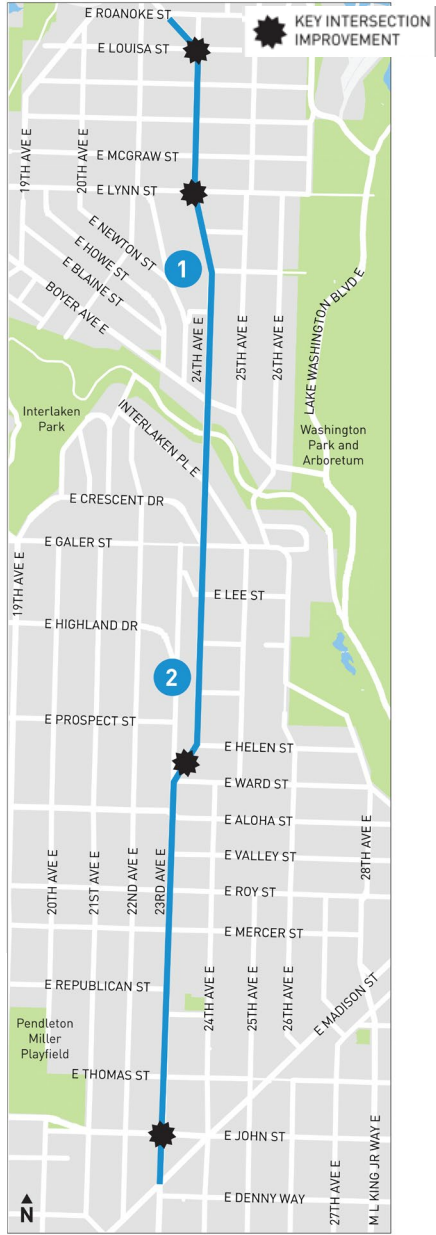
Lane rechannelization (2018)



23rd Ave E near Aloha St, after re-channelization (looking north)



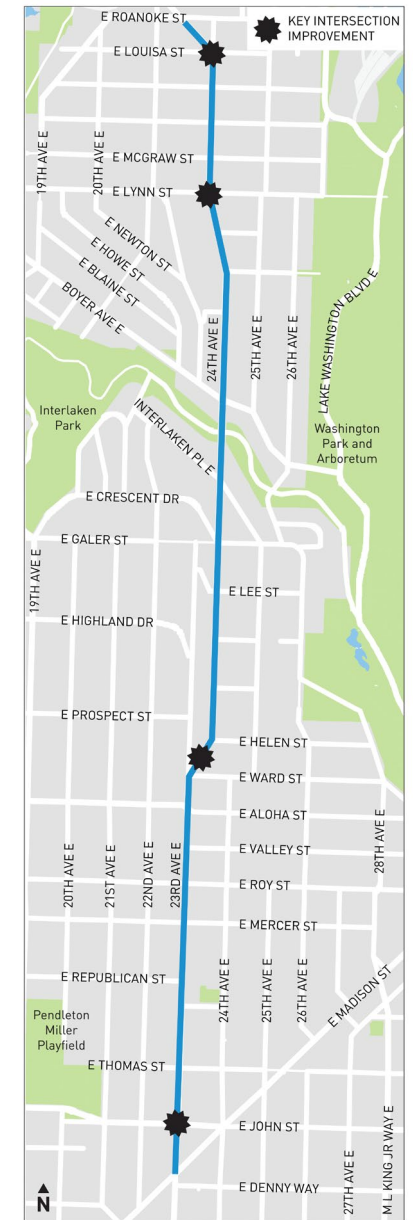
- 1 No Changes to Road Channelization (Boyer Ave E to E Roanoke St)
- 2 Rechannelized Roadway (E John St to Boyer Ave E)



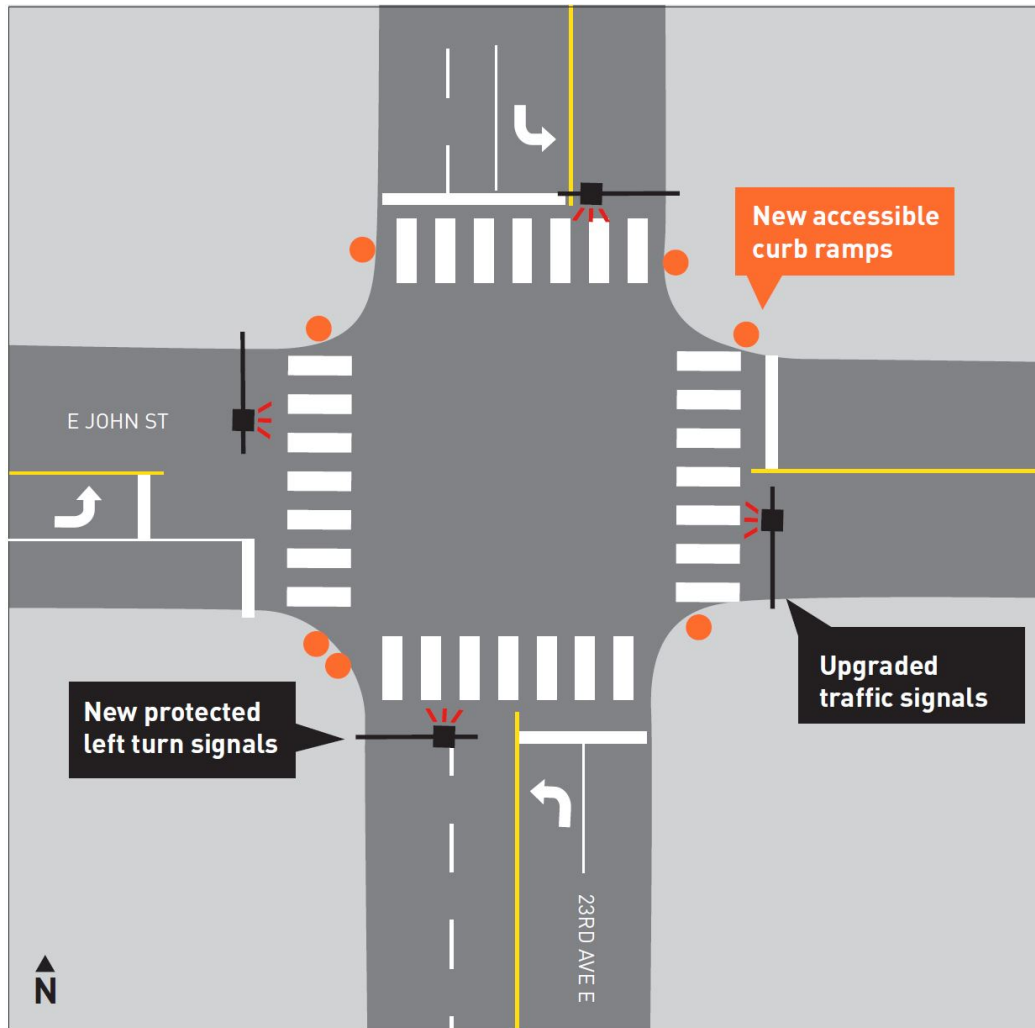
Crossing and transit stop improvements

Construction starts this October!

- Enhances transit stops
- Installs new traffic signals
- Modifies parking
- Adds new curb ramps and marked crosswalks
- Repairs sidewalks
- Adds skid-resistant surface treatments to street

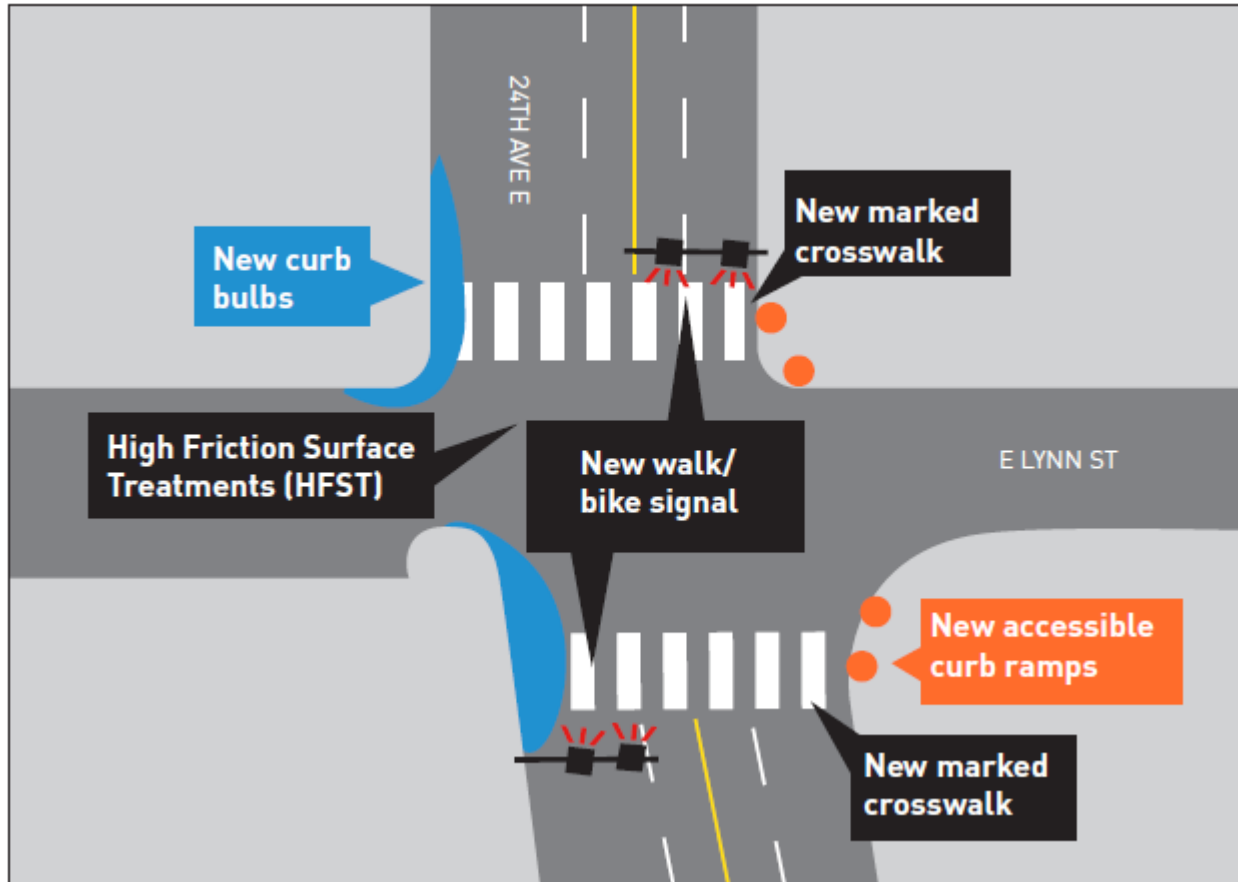


E John St Intersection



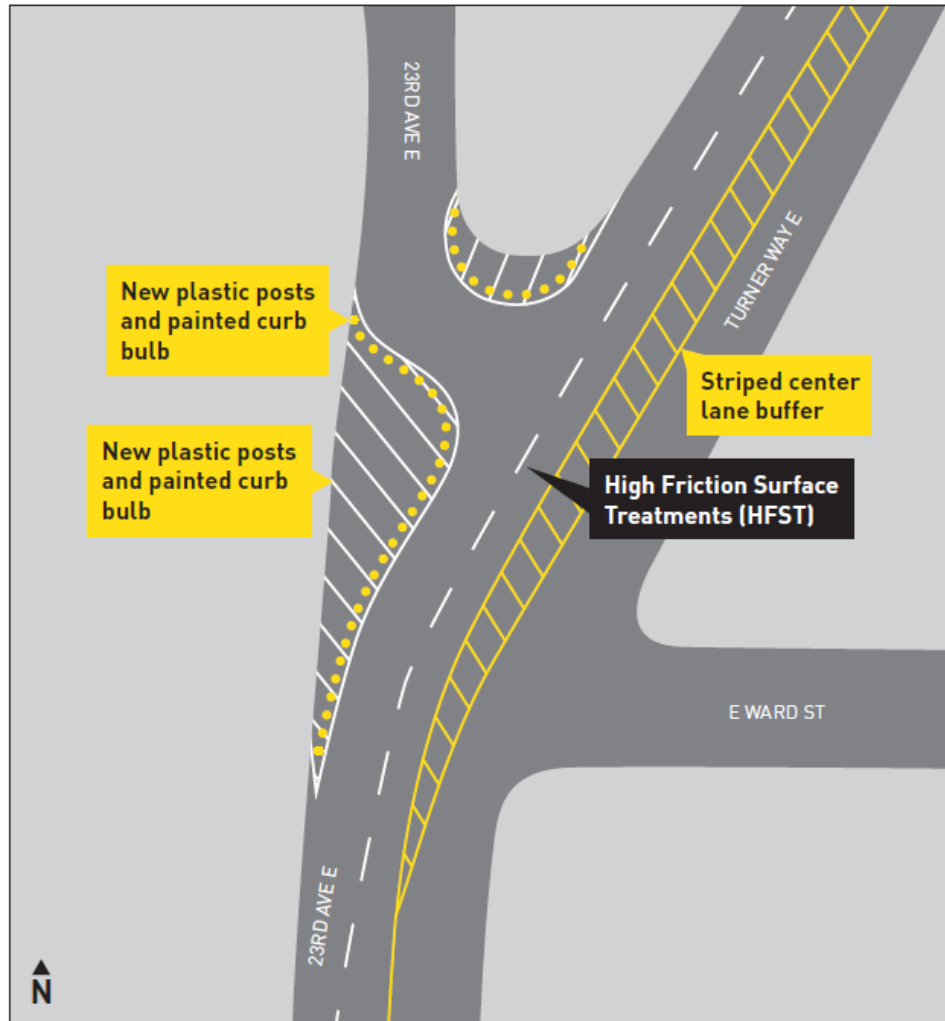
- Protected left-turn signals from northbound, southbound, and eastbound 23rd Ave E/E John St
- New accessible curb ramps

E Lynn St Intersection



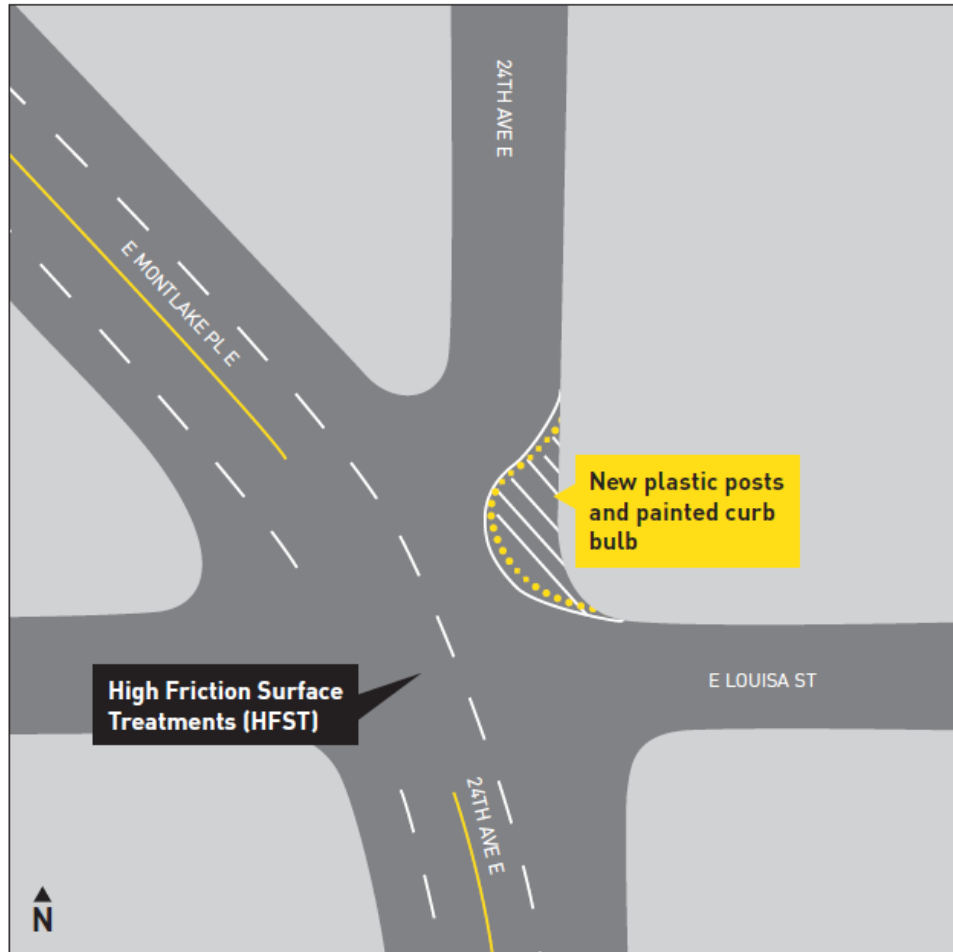
- New walk/bike signal and marked crosswalks
- New accessible curb ramps and curb bulbs
- Skid-resistant surface treatments

E Ward St/Turner Way E Intersection



- 2 striped curb bulbs and plastic posts at E Ward St/Turner Way E
- Skid-resistant surface treatments

E Louisa St Intersection



- Striped curb bulb and plastic posts at 24th Ave E/E Louisa St
- Skid-resistant surface treatments

Timeline

- Construction of the remaining project elements to begin this October and continue through mid-2022.



What to expect during construction

1. Intersection work at E John St and E Lynn St
2. Sidewalk repair and bus stop improvements
3. Channelization and sign installation



Intersection of 24th Ave E and E Lynn St

What to expect during construction

- Typical weekday hours of 7 AM – 5 PM, Monday through Friday
- Occasional night work at specific locations along the corridor, such as striping
- Temporary parking restrictions
- Temporary lane, crosswalk and sidewalk closures
 - Access to homes and businesses will be maintained and detours will be provided.
- Temporary bus stop relocations
- Noise, dust and vibrations during work hours
- Equipment staged in project area



24th Ave E and E Louisa St

Stay up-to-date!

Email

23rdAveCorridor3@seattle.gov

Leave a voicemail

(206) 900-8717

Visit the project webpage

www.seattle.gov/visionzero/projects/23rd-ave-e



Scan to visit the project webpage!