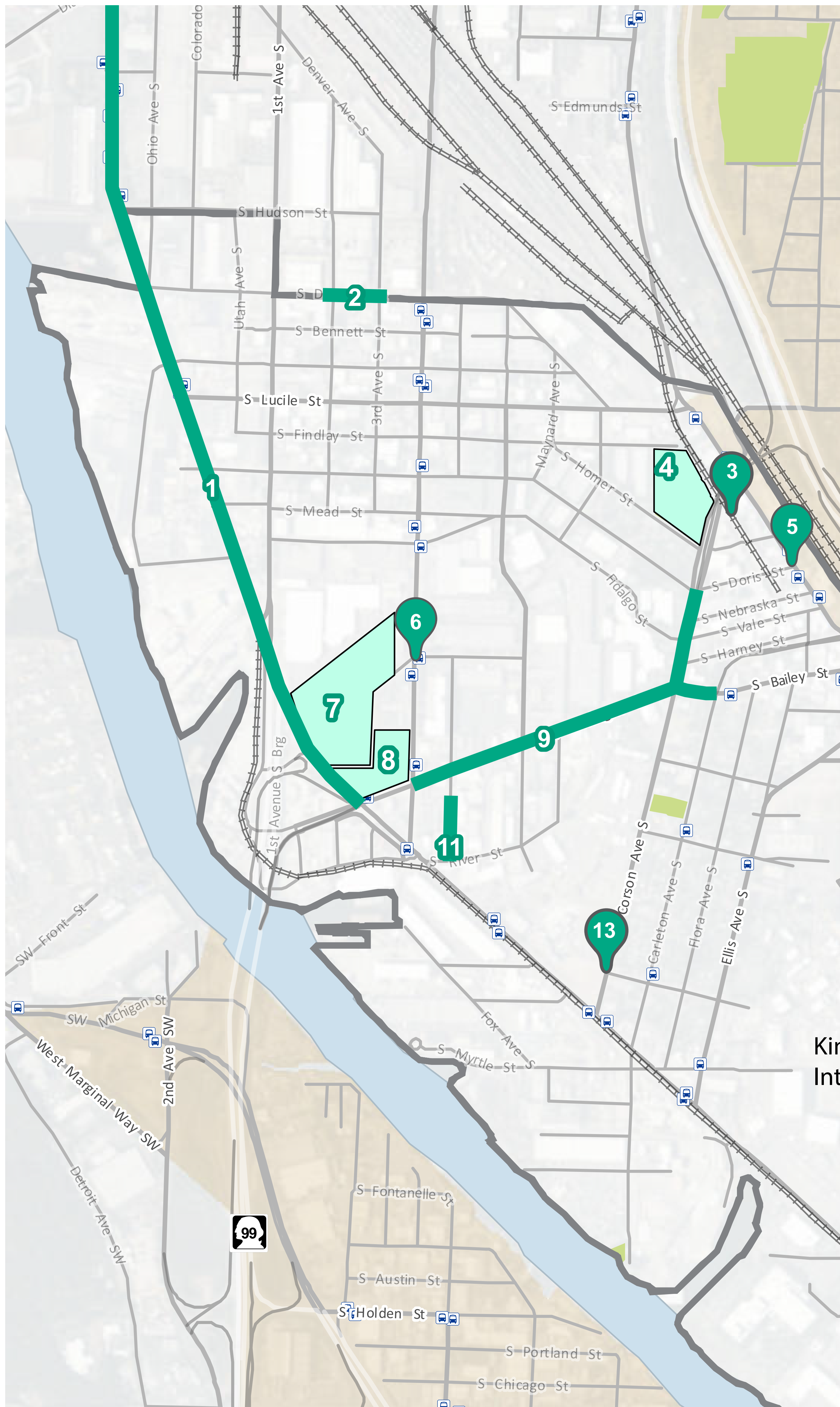


GEORGETOWN MOBILITY STUDY

UPCOMING PROJECTS

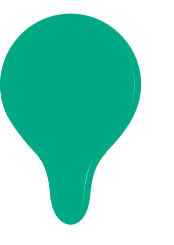
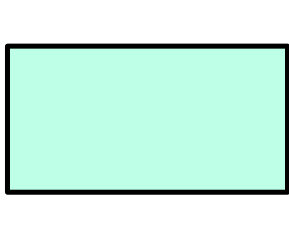

This map shows Georgetown projects that are anticipated through 2018. They include City, County and private planning and construction projects.



Projects and Planning Studies	
1	Conceptual Design - E Marginal Way Corridor (Atlantic - S Michigan St)
2	Depaving Project - S Dawson St
3	Crossing improvements along UPRR corridor
4	Georgetown Playarea reconstruction
5	New crosswalk: Airport Way & Doris St
6	New crossing & bus stop improvements -4th & Front St
7	Prologis warehouse construction
8	Wet Weather Treatment Plant construction
9	Michigan St ITS & repaving Projects
10	New pathway on E Marginal (14th-16th Ave S)
11	Pavement to Parks - 5th Ave (In Discussion)
12	Street repaving and ped. /bike improvements on Swift/Myrtle/Othello
13	New Crossing at Corson & Willow (w/ bus re-route)
14	Pedestrian route improvements on 16th Ave S
*	Bus reroute from Carleton Ave S to Corson Ave S
*	City-wide Sidewalk Assessment Survey
*	Duwamish MIC Large Vehicle Parking Study
*	Street Tree Inventory & Plantings
* Projects are neighborhood or city-wide and not shown on the map	



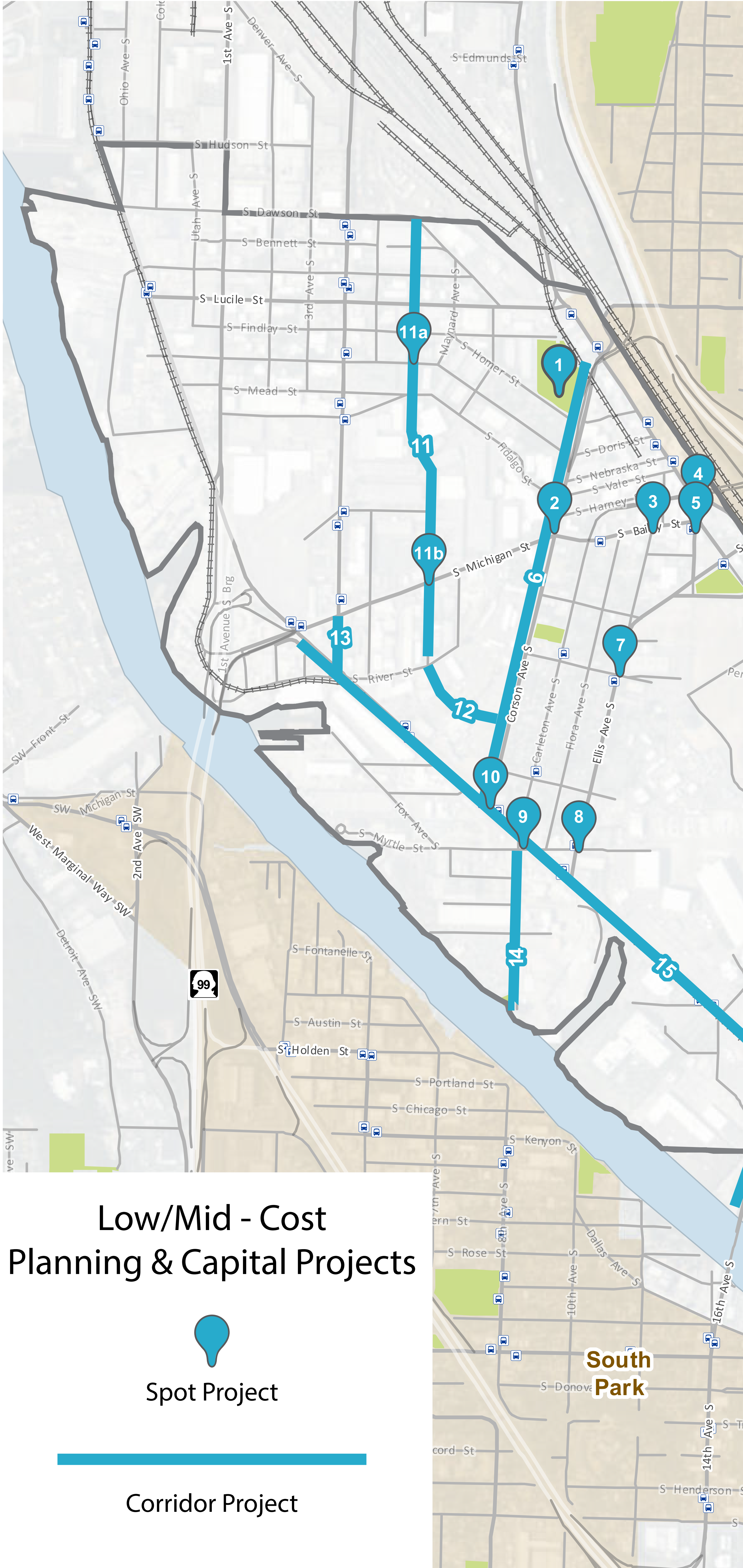
Upcoming Projects and Planning Studies in Georgetown (Includes non-SDOT efforts)

-  Spot Project
-  Site Project
-  Corridor Project

GEORGETOWN MOBILITY STUDY

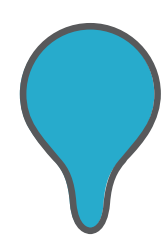
LOW/MID-COST PLANNING AND CAPITAL PROJECTS

This map shows potential projects that offer a range of mobility improvements. Projects indicated with an asterisk were identified as initial priorities through public outreach. See the Next Steps board for details on how projects will be prioritized in the final study.



Potential Projects	
1	Georgetown Playfield Access Study
2	Intersection Improvement at S Michigan/Corson/ S. Bailey*
3	Crossing Improvements at S Bailey Street/Ellis Avenue S
4	Neighborhood transit hub
5	Crossing Improvements at 13th Avenue S/S Bailey St/ Stanley Ave S Intersection
6	Corson traffic & pedestrian improvements study*
7	Pedestrian crossing & sidewalk improvements at Ellis Ave S/S Warsaw St*
8	Pedestrian Improvements at Ellis Avenue S and S Myrtle Street Intersection
9	Improvement at East Marginal Way S / 8th Ave S /S Myrtle St Intersection
10	Intersection Improvements at E Marginal/Corson Ave S*
11	6th Ave Corridor Study / Street Concept Plan
11a	Traffic calming at 6TH/Orcas*
11b	Crossing improvements at 6th Avenue S & S Michigan ST*
12	Pedestrian/Bike trail from Corson Ave S to S River St/6th Ave S.*
13	Pedestrian improvements on 4th Ave S (E Marginal to S Michigan ST)
14	Pedestrian access improvements on 8th Ave S* (E Marginal Way to Gateway N. Park/Gt. Pump Station site)
15	E Marginal Way Ped/Bike Connection to South Park*
Potential Neighborhood-Wide Projects	
NS	Street tree/landscape improvements
NS	Wayfinding and directional signage
Some projects may require planning study to assess feasibility, which may result in additional Large Capital Improvement project, not currently shown.	
* Projects identified as initial priorities through public outreach	

Low/Mid - Cost Planning & Capital Projects



Spot Project



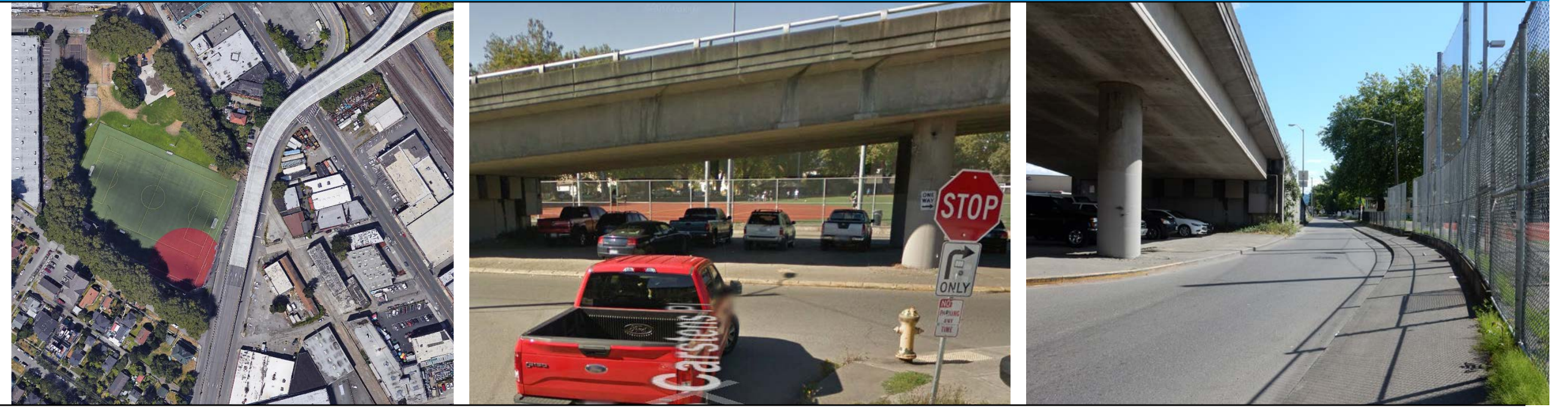
Corridor Project

GEORGETOWN MOBILITY STUDY

POTENTIAL PROJECT DETAILS

1 Georgetown Playfield Access Study

Identify feasible pedestrian access improvements at the Georgetown Playfield and children's play area.



2 Intersection improvement at S Michigan St/Corson/ S Bailey*

Feasibility study to assess potential intersection improvement options to improve pedestrian, bike and vehicular access and circulation.



3 Crossing Improvements at S Bailey Street/Ellis Avenue S

Crosswalk improvement across S Bailey Street. Requires study of existing midblock crosswalk.



4 Neighborhood transit hub

Development of neighborhood transit hub with enhanced amenities near Old City Hall. Includes Metro routes 124, 107, and 60.



5 Crossing Improvements at 13th Avenue S/S Bailey St/ Stanley Ave S Intersection

Crosswalk improvement across south leg of 13th Avenue S / S Bailey Street / Stanley Avenue S intersection. Provides direct connection between southbound bus stop and Old City Hall.



6 Corson traffic & pedestrian improvements study*

Feasibility study to assess potential intersection improvement options to improve pedestrian, bike and vehicular access and circulation.



7 Pedestrian improvements at Ellis Ave S / S Warsaw St*

Crossing and sidewalk improvements at intersection adjacent to the Opportunity Skyway school and near a bus drop-off location and Metro bus stop. Improvements may include a new crosswalk, sidewalk and curb ramps improvements, and potential art/placemaking.



8 Pedestrian improvements on S Myrtle St, near Ellis Ave S

This project was identified through the recent Your Voice Your Choice program, and would add wheel stops on both sides of S Myrtle St to better define the pedestrian walkway in this area.



9 Improvement at East Marginal Way S / 8th Ave S / S Myrtle St Intersection

Improve intersection for both freight movement and pedestrian access/safety.



GEORGETOWN MOBILITY STUDY

POTENTIAL PROJECT DETAILS

10 Intersection improvements at E Marginal / Corson Ave S*

SDOT exploring feasibility of painted curb and bollards, or other low-cost traffic calming intervention at the intersection and repaint crosswalk across Corson.



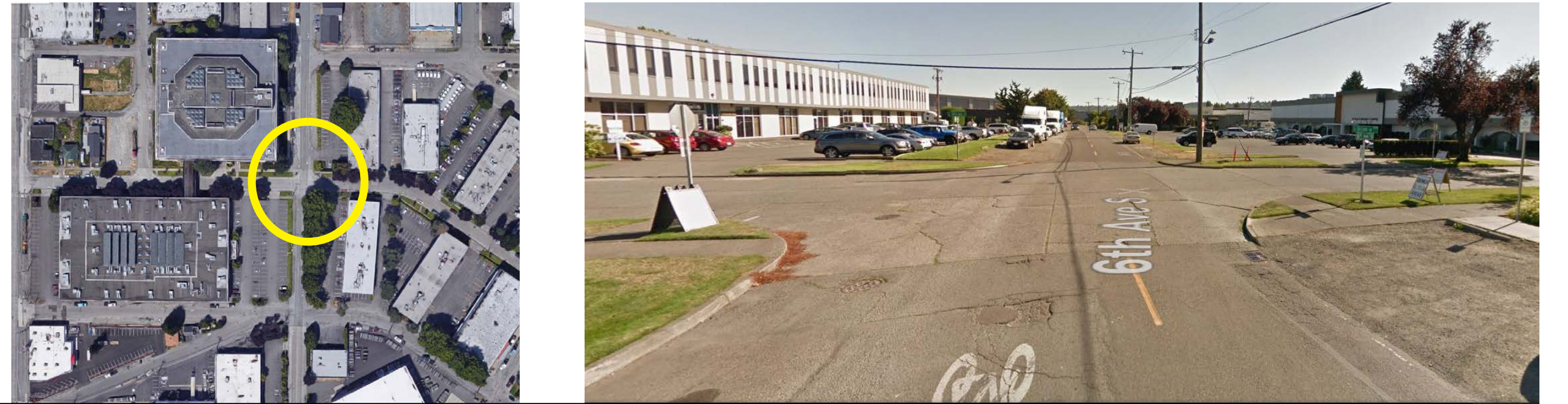
11 6th Ave S Corridor Study / Street Concept Plan*

Corridor study to assess feasibility of pedestrian and bike improvements along 6th Ave, from Denver/Dawson south to River St., and develop street concept plan to aid with incremental implementation.



11a Traffic calming at 6th Ave S / Orcas*

As part of the 6th Ave S Corridor Study, SDOT to explore feasibility and implementation of traffic calming at intersection of 6th Ave S and Orcas St.



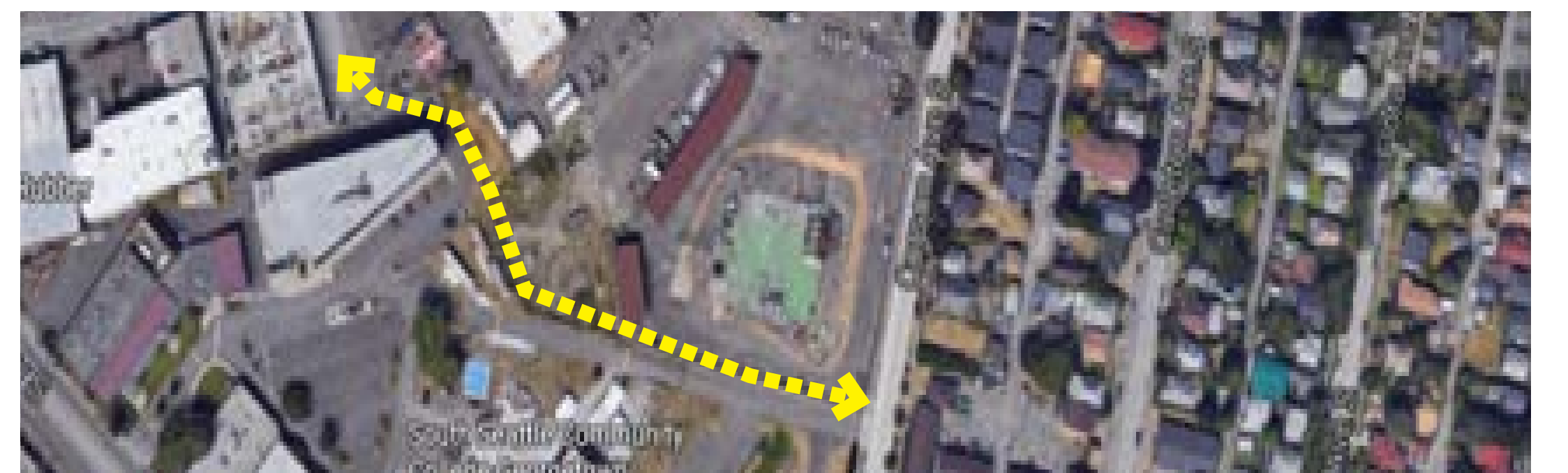
11b Crossing improvements at 6th Ave S / S Michigan St*

A key intersection along the 6th Ave Corridor, this effort would be a part of the larger study, and would assess opportunities to improve pedestrian and bike access across S Michigan St, and provide a connection to potential pathway between S River St and Corson Ave S.



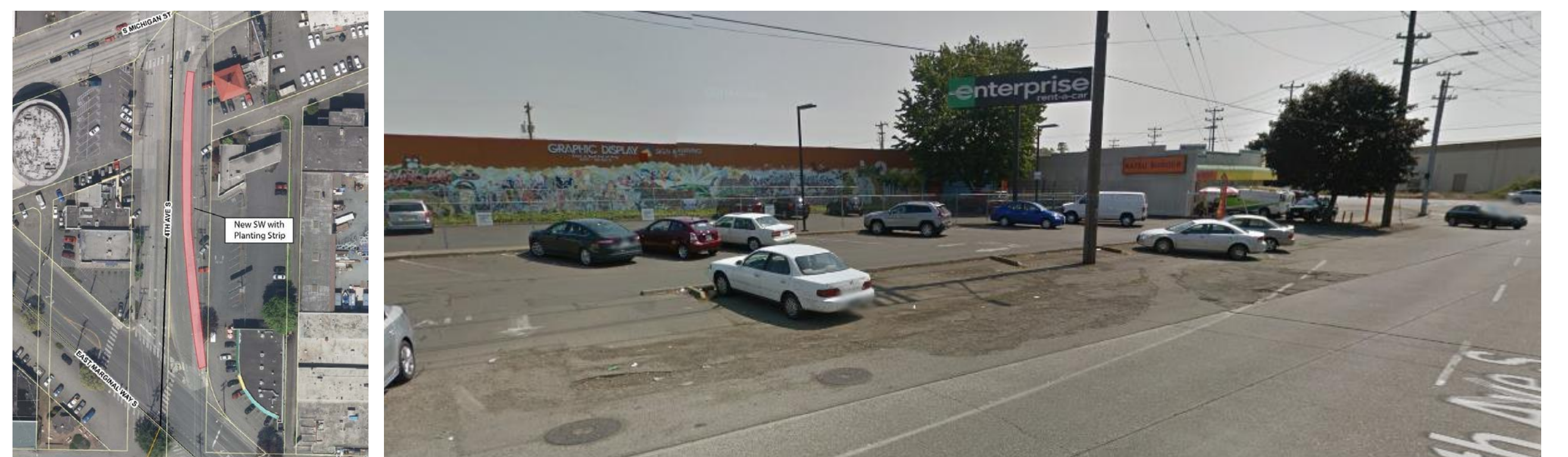
12 Pedestrian/Bike trail from Corson Ave S to S River St / 6th Ave S*

Coordinate with WSDOT and SCC to assess feasibility of a bike connection from Corson Ave S to River St/6th Ave S.



13 Walkway improvements on 4th Ave S

This project was identified through the Your Voice Your Choice program, and would add sidewalk on the east side of 4th Ave between E Marginal and S Michigan St, providing better access to the food bank, and businesses near SSC.



14 Pedestrian access improvements on 8th Ave S*

Improve pedestrian access to Gateway North. Park along 8th Ave S by protecting and formalizing the pedestrian route. Improvements may include the addition of paint, wheel stops and/or the addition of fill material to provide a more accessible walking surface.



15 E Marginal Way Pedestrian/Bike connection to South Park*

Early conceptual study to develop and assess potential alignments for a bicycle and pedestrian connection to South Park along E Marginal Way.

see concept boards at right

Neighborhood Wide

Street tree/landscape improvements

SDOT may help with early coordination between local community leaders and private landowners to identify areas where there is more opportunity for streetscape plantings, including street trees.

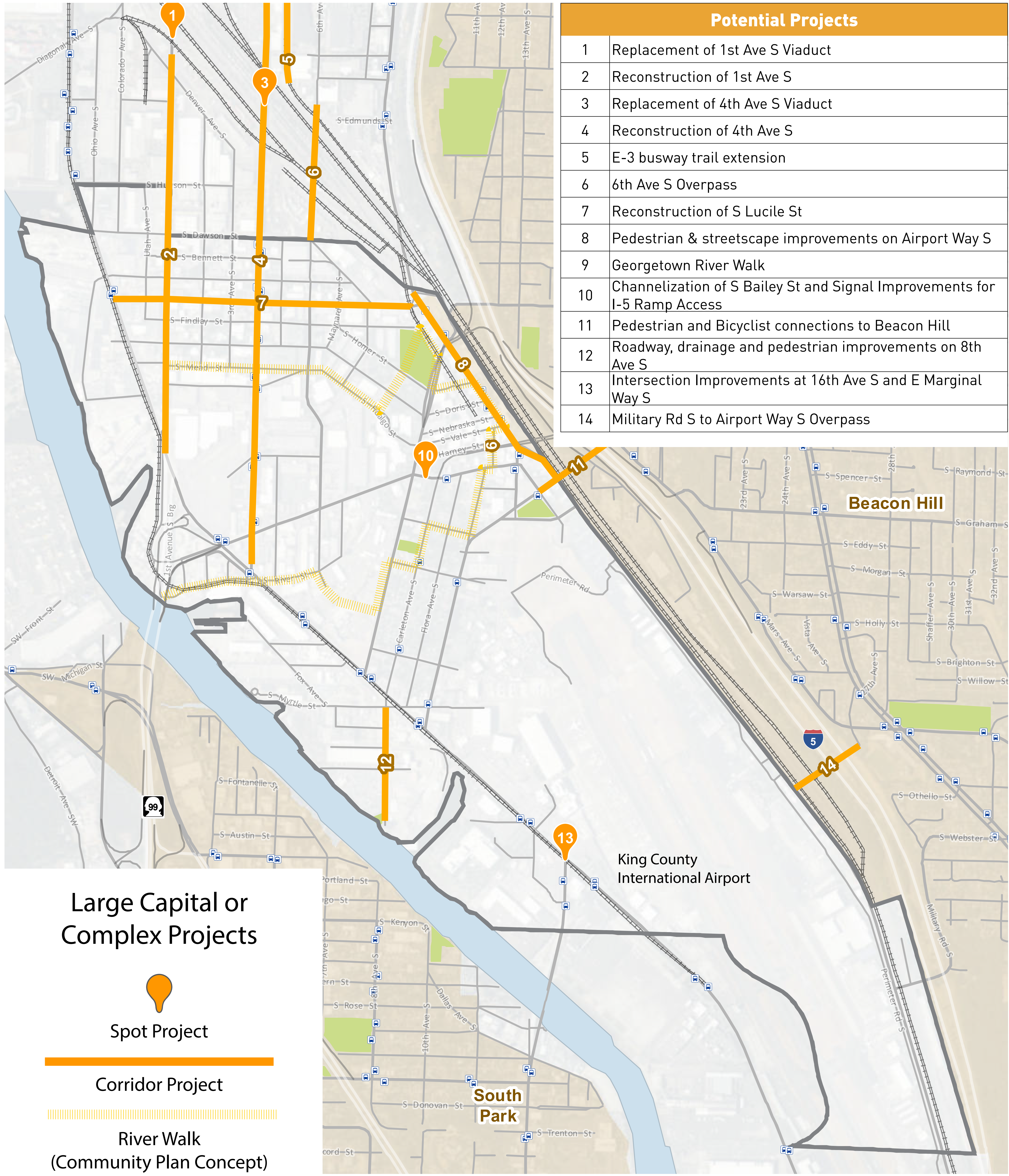
Wayfinding and directional signage

Study to develop a better pedestrian and directional signage throughout the neighborhood, to direct large vehicle traffic to appropriate arterials, and improve wayfinding and placemaking.

GEORGETOWN MOBILITY STUDY

LARGE CAPITAL IMPROVEMENTS OR COMPLEX PROJECTS

This map shows potential large capital improvements or other complex projects. These long-term projects may present opportunities for multi-modal improvements.



Large Capital or Complex Projects



Spot Project



Corridor Project



River Walk
(Community Plan Concept)

GEORGETOWN MOBILITY STUDY

PUBLIC ENGAGEMENT

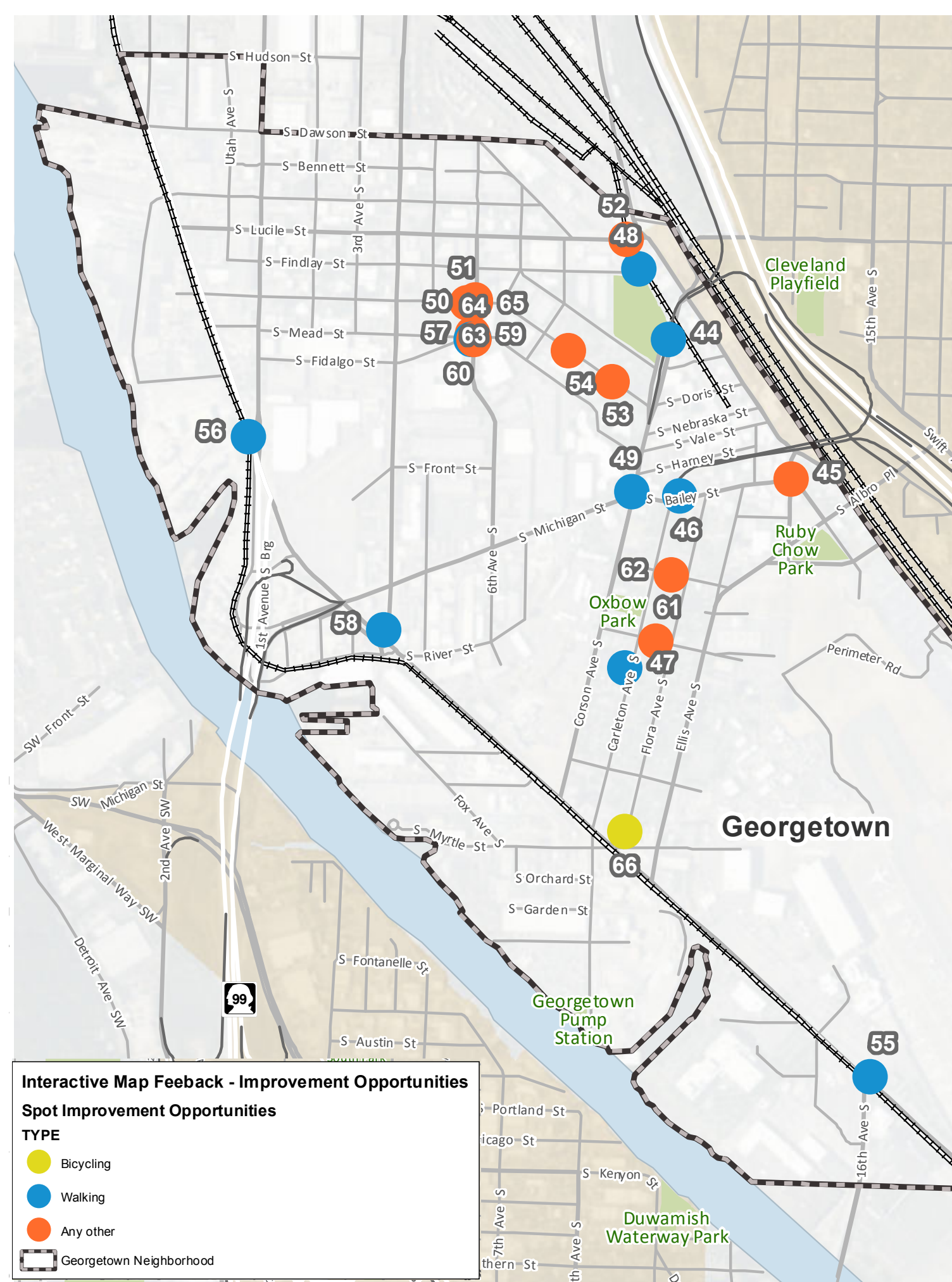
- The Georgetown Mobility Study aims to define and prioritize street improvements to increase safety and health, and improve conditions for people walking, biking, and driving.
- We have hosted and attended a number of community engagement events, meetings, and other activities over the course of the project.
- The feedback has helped us better understand access and mobility needs in Georgetown, and identify opportunities for future improvement.



Advisory Group Meeting

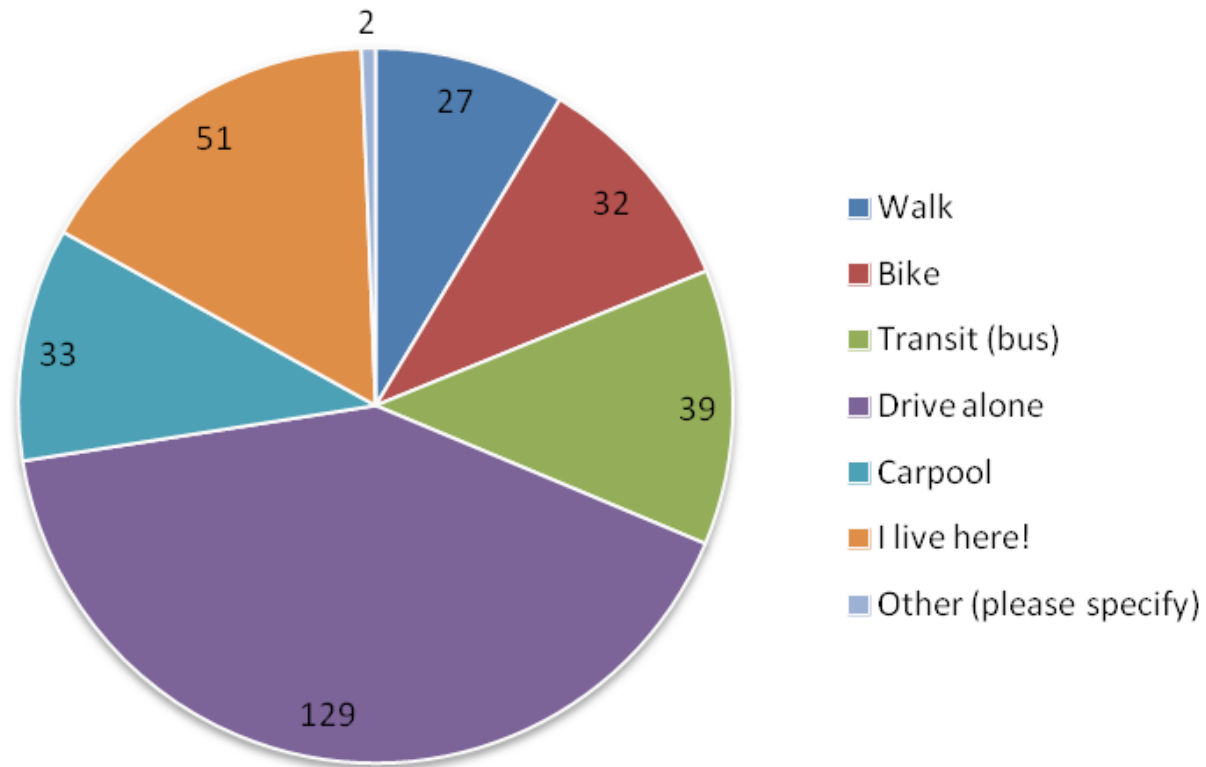


Open House #1

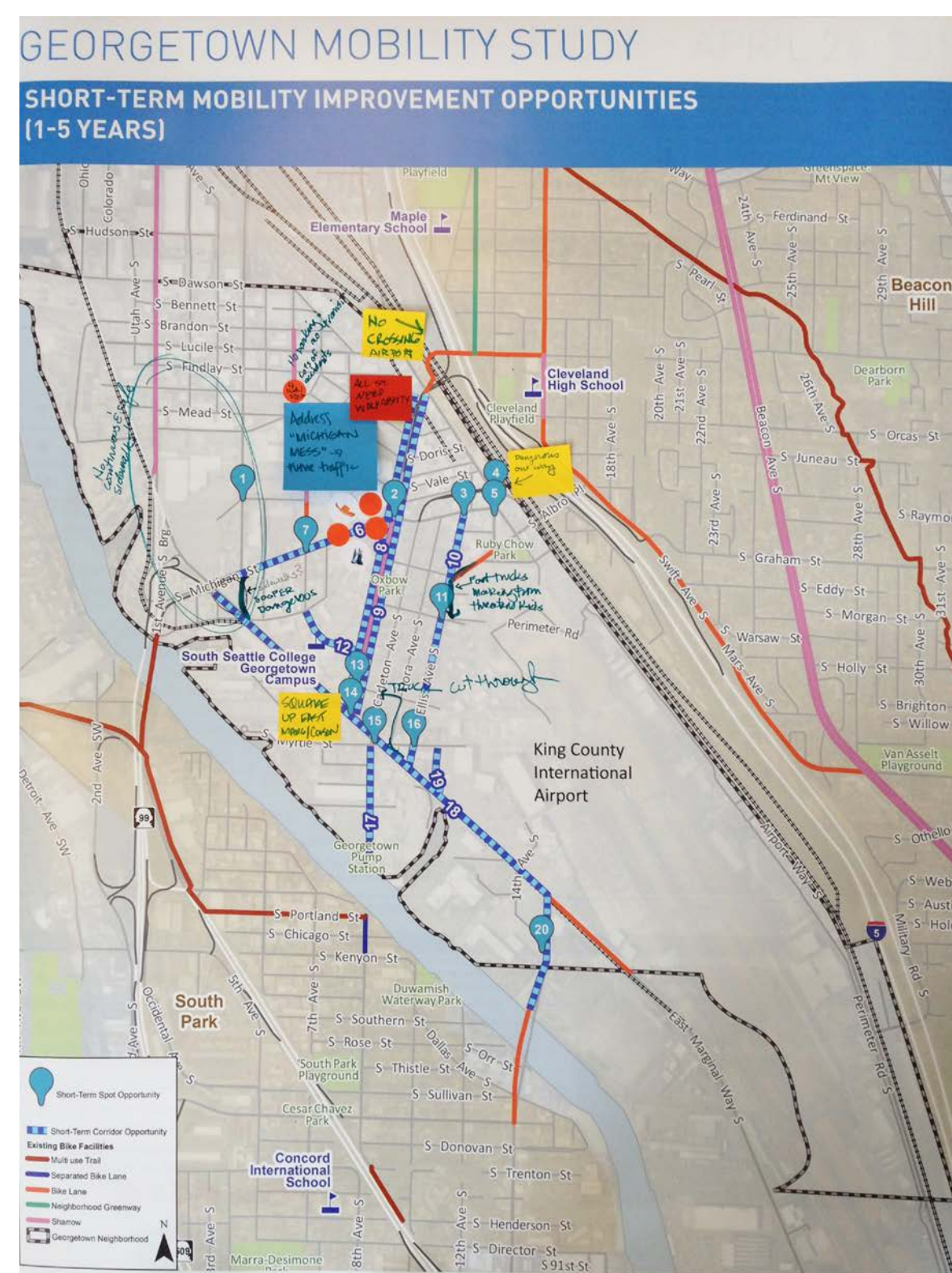
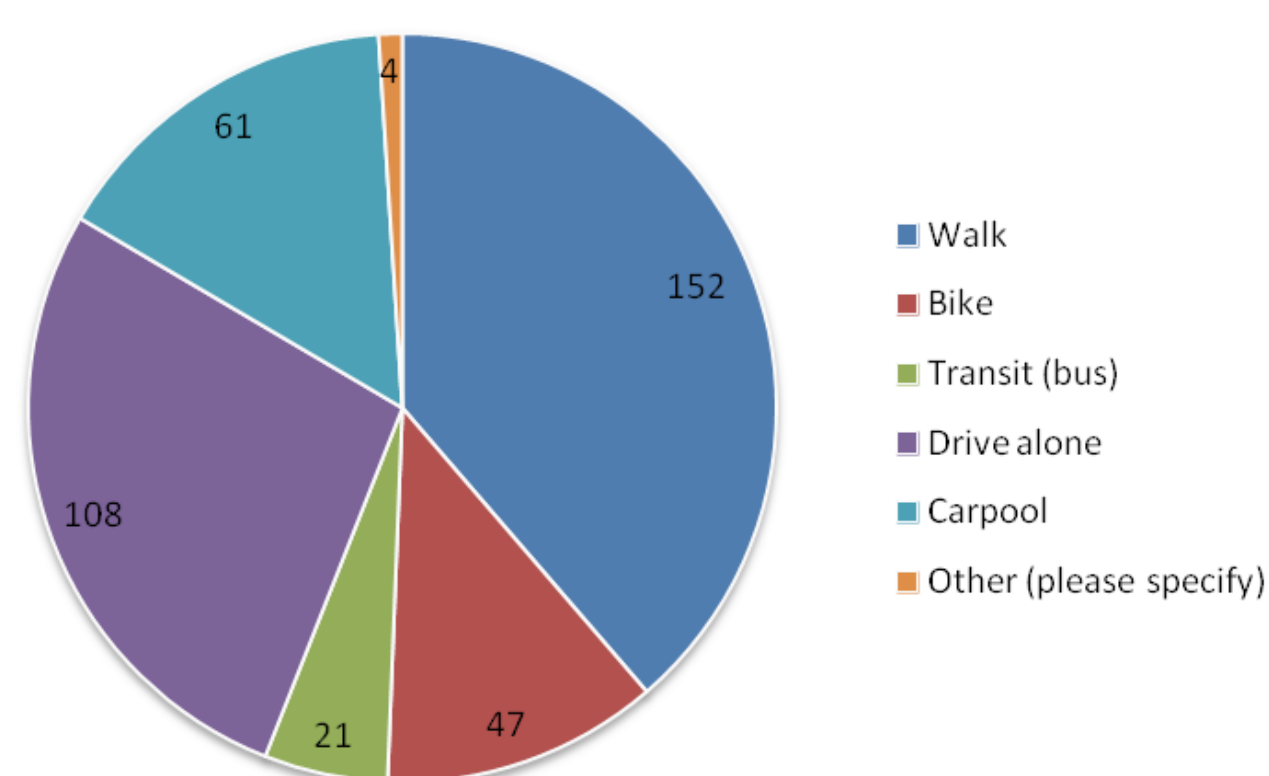


Online survey results

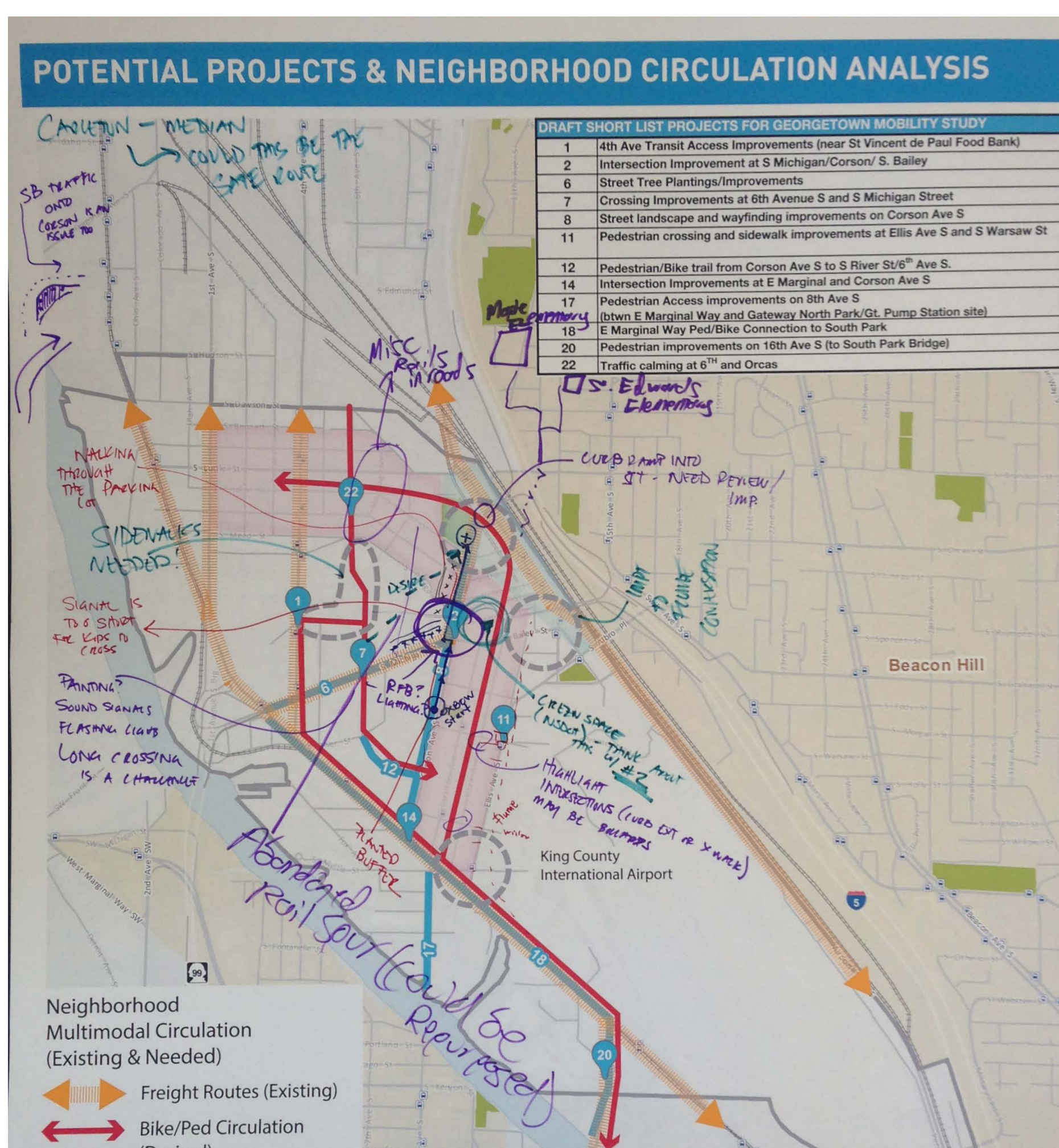
How do you get to Georgetown?



How do you travel around Georgetown?



Open House #1 - "dot" preference & prioritization results



SOBA/NOBA Walk



Garden Walk



GEORGETOWN MOBILITY STUDY

NEXT STEPS

- Prioritization will be based on community input and the following project evaluation criteria:

Safety: Project improves the safety of comfort of people walking or biking.

Access & Mobility: Project improves movement between destinations and connects transportation facilities.

Neighborhood Equity, Health, & Placemaking: Project advances goals for improving health, satisfies needs expressed by traditionally underserved populations and helps foster a sense of place and community identity.

Community Support: Project is supported or desired by community at-large, including residents, employees, and other stakeholders.

Implementation Assessment: How easy or difficult the delivery of project is expected to be.

Modal Plan Consistency: Project is consistent with the planned projects and/or goals in one of the City's adopted modal plans.

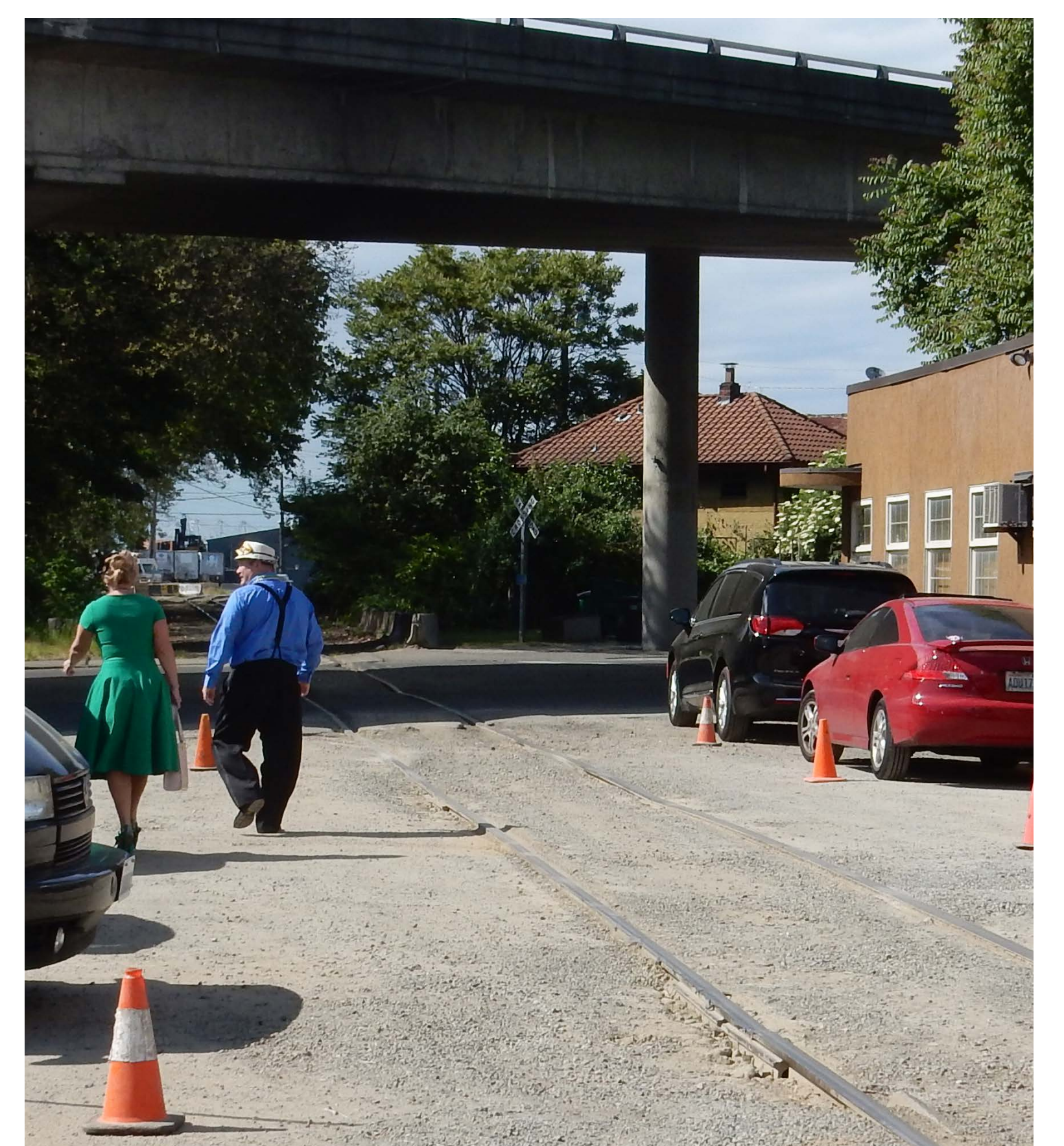
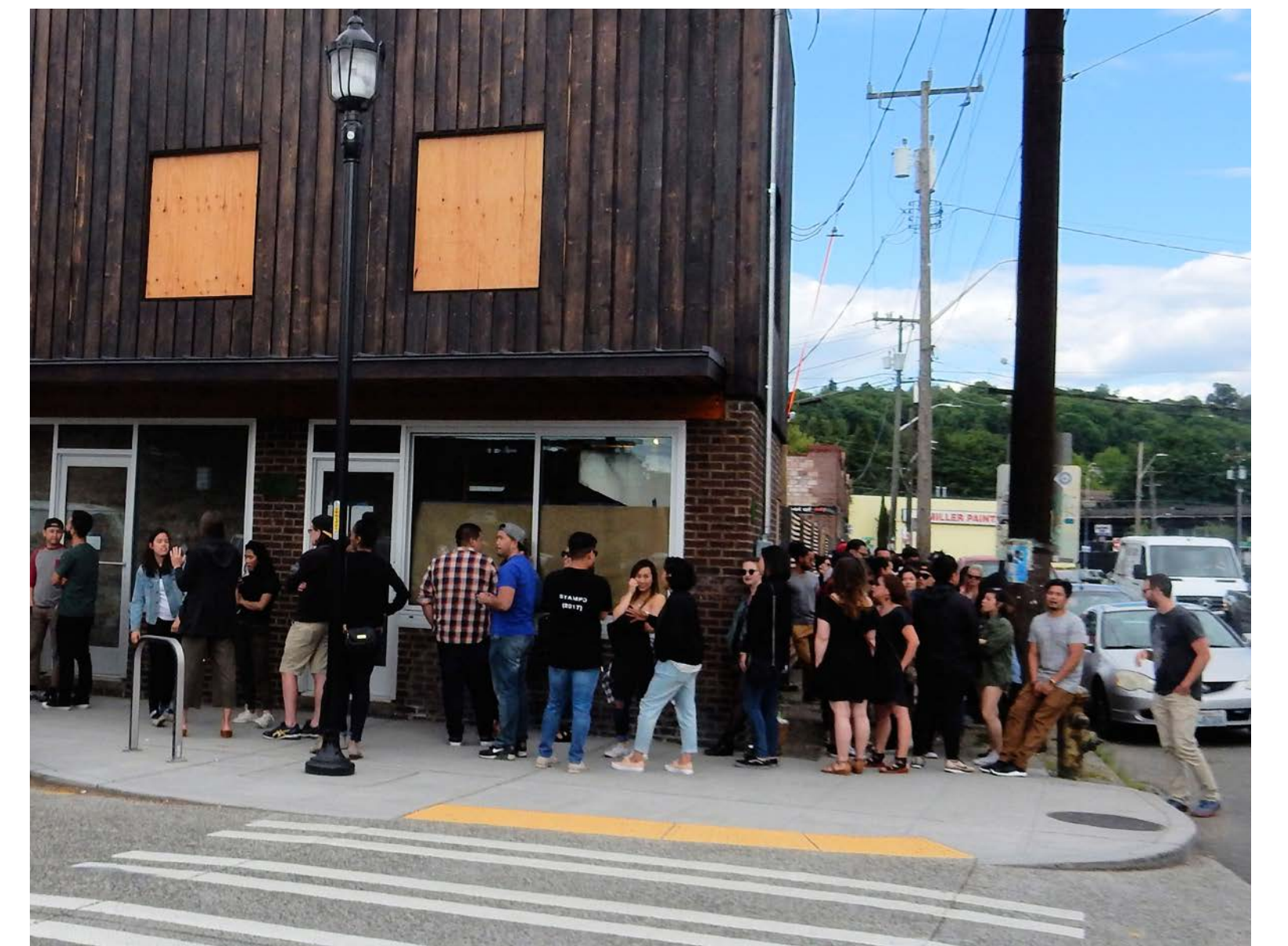
- Follow-up Advisory Group meeting (August)

- Final report (Fall)

- **Stay engaged!** The Georgetown Mobility Study recommendations will guide us as we make future improvements in the neighborhood. Sign-up on the email list below to receive updates when the final report is complete.

The final report will be posted to the project website:

<https://www.seattle.gov/transportation/GeorgetownMobilityStudy.htm>



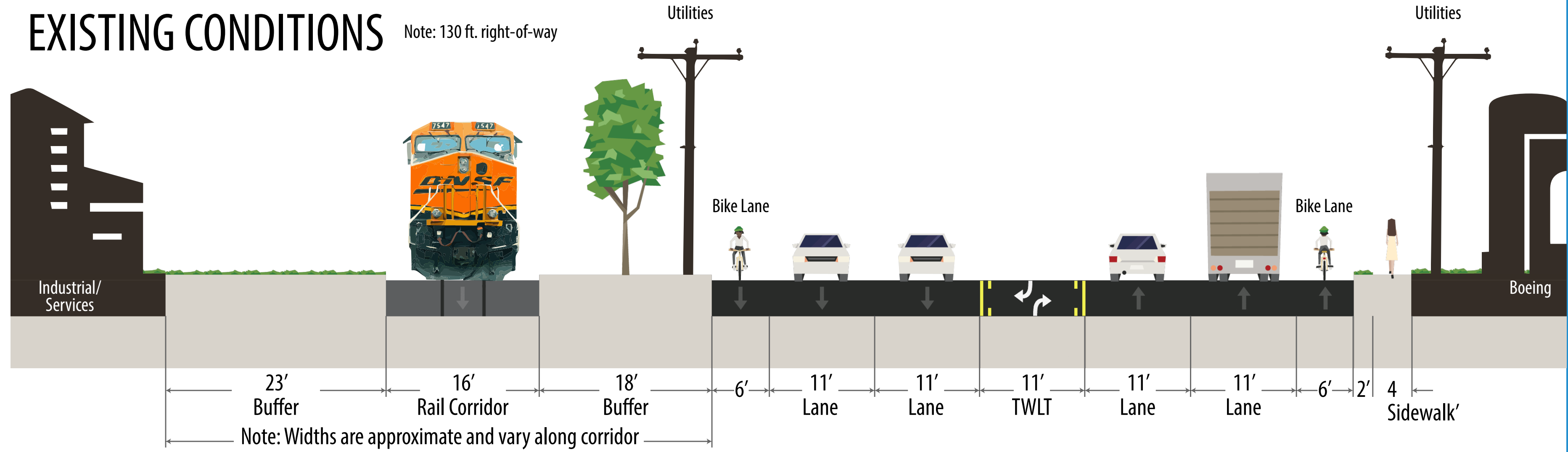
GEORGETOWN MOBILITY STUDY

EAST MARGINAL WAY MULTI-USE TRAIL - CONCEPTUAL ALTERNATIVES

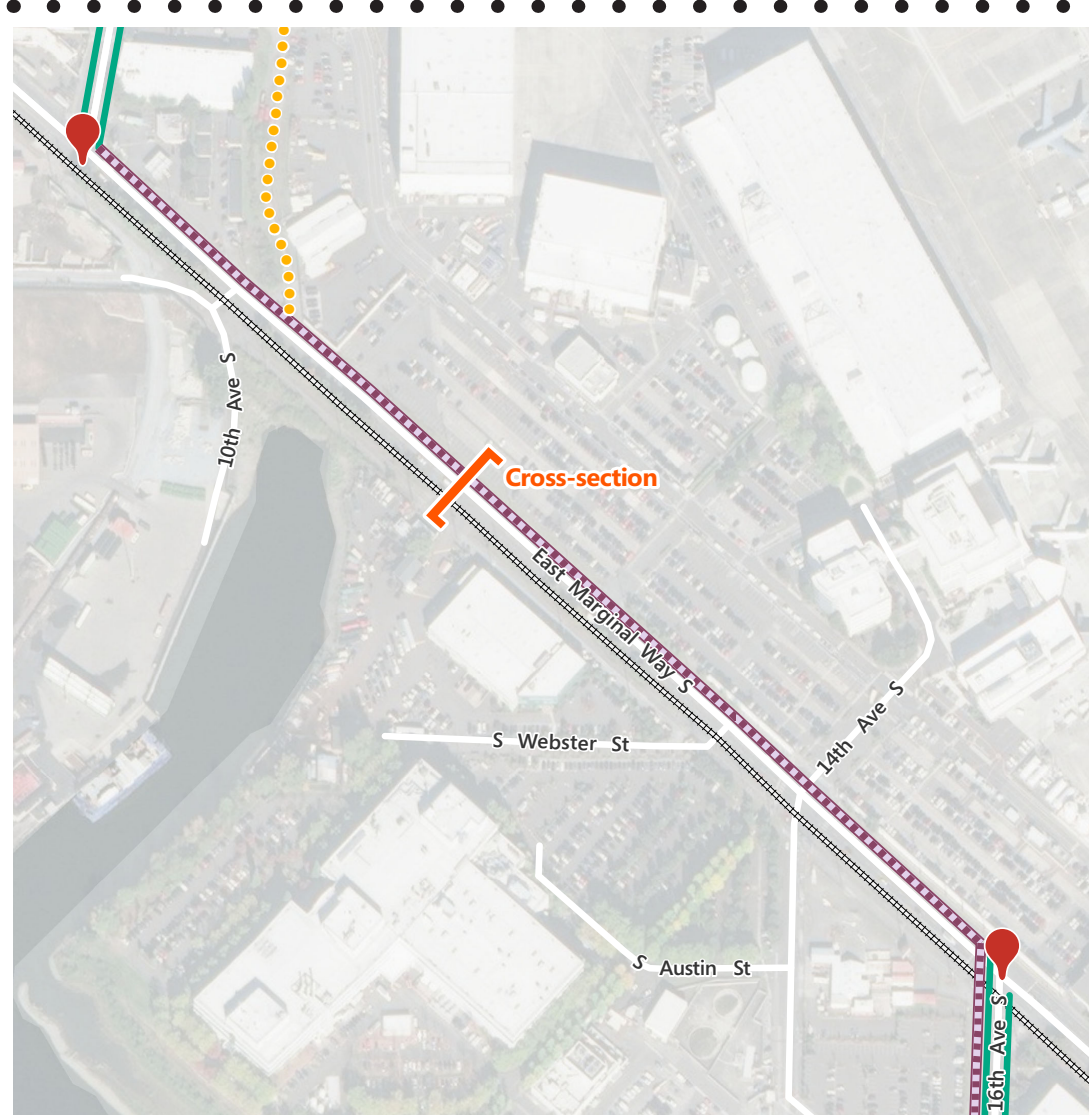


EXISTING CONDITIONS

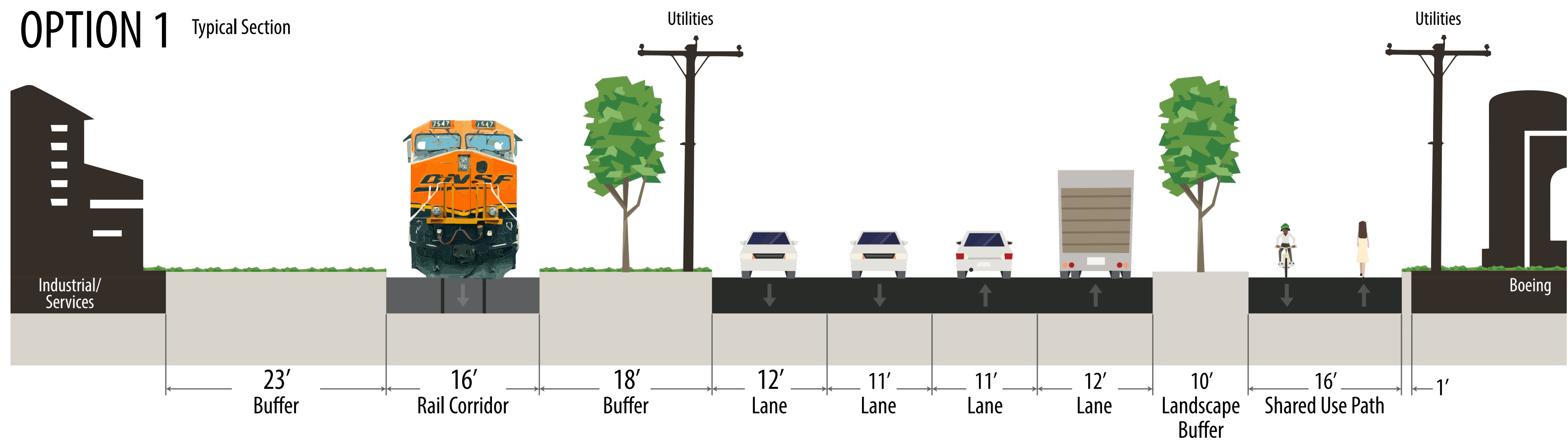
Note: 130 ft. right-of-way



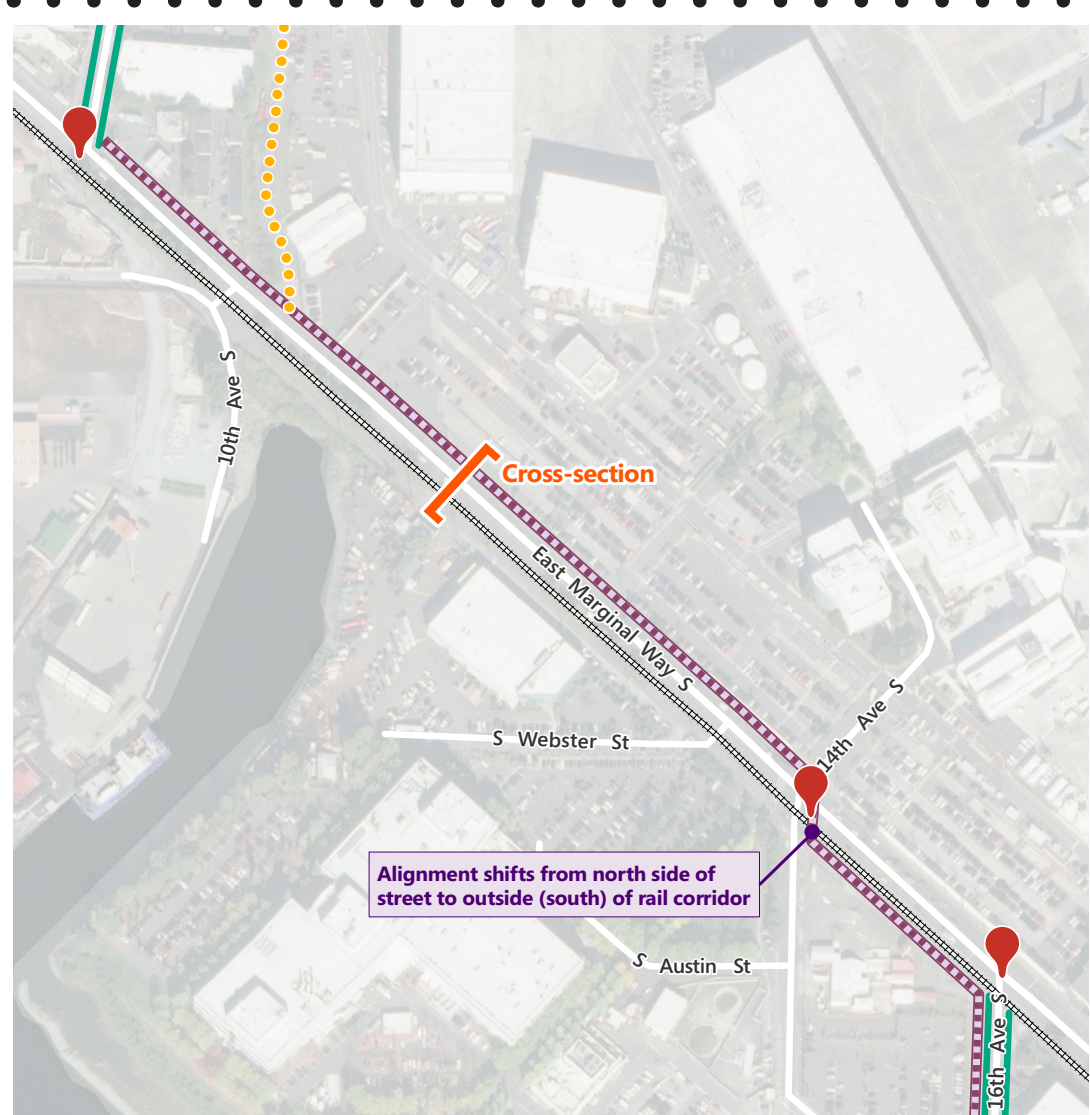
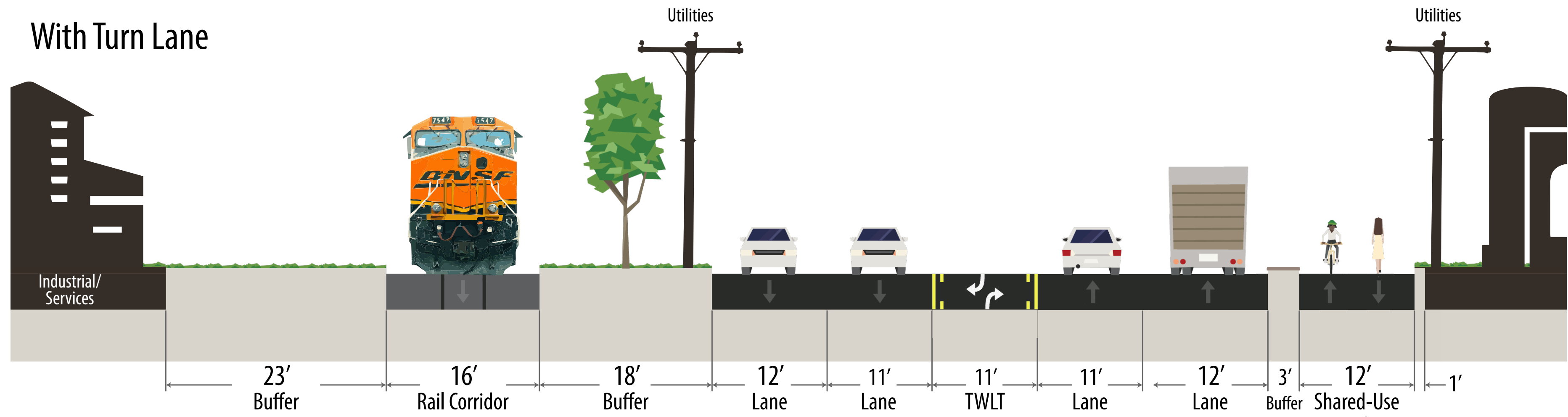
VOTE BELOW
PLACE A DOT NEXT TO
YOUR PREFERRED
CONCEPT



OPTION 1 Typical Section

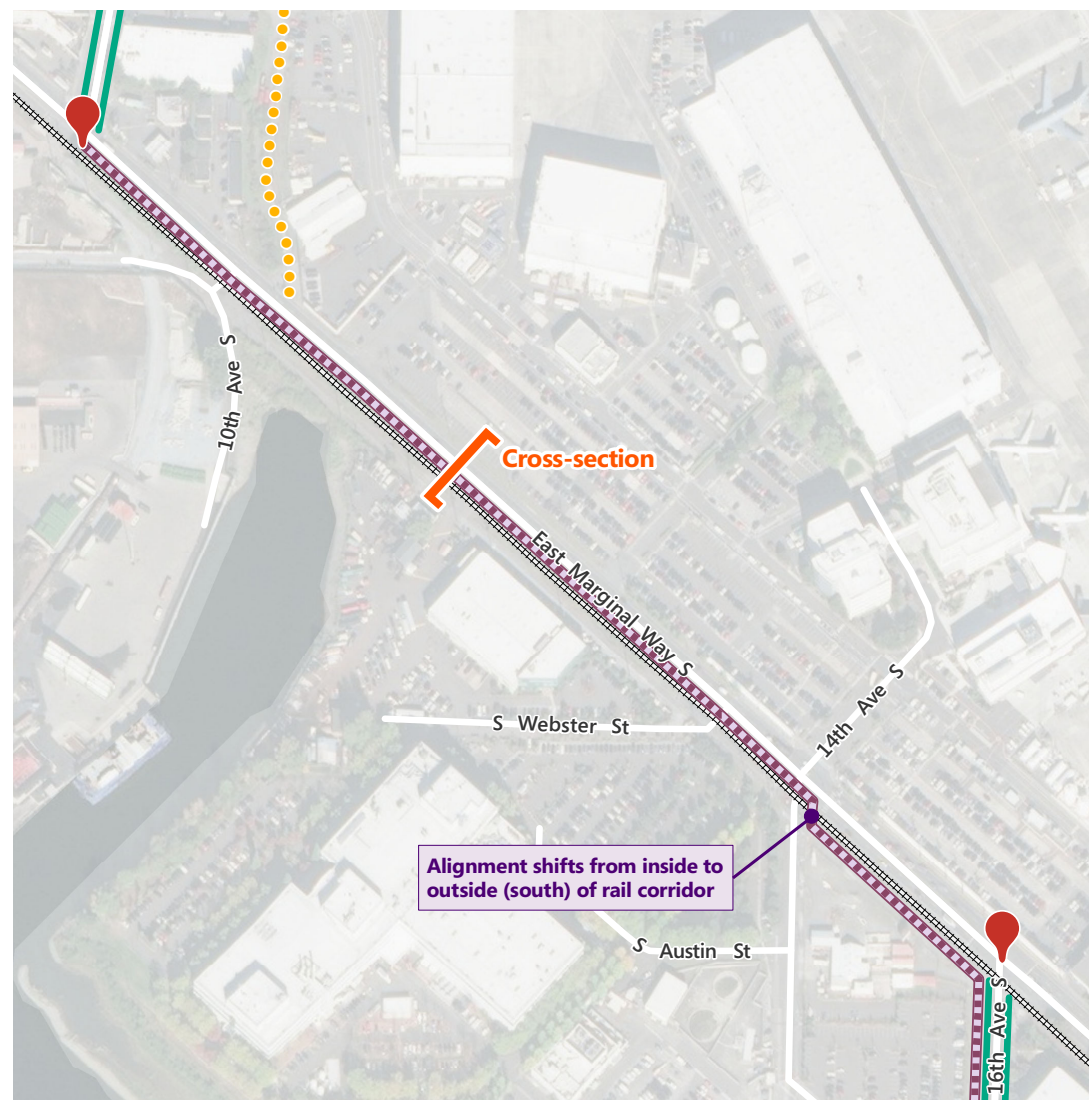
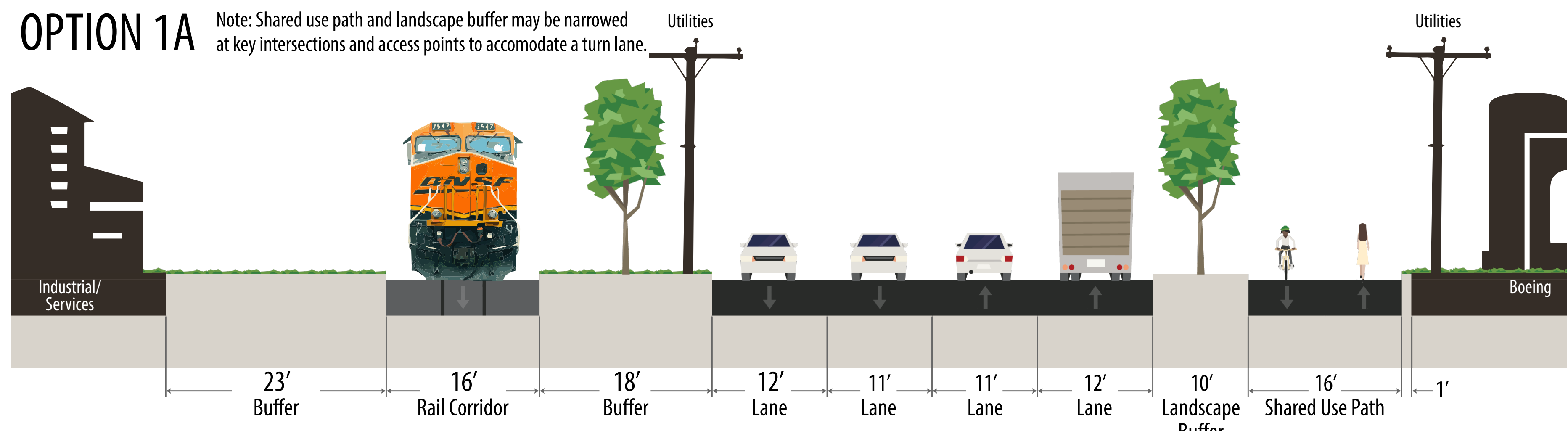


With Turn Lane



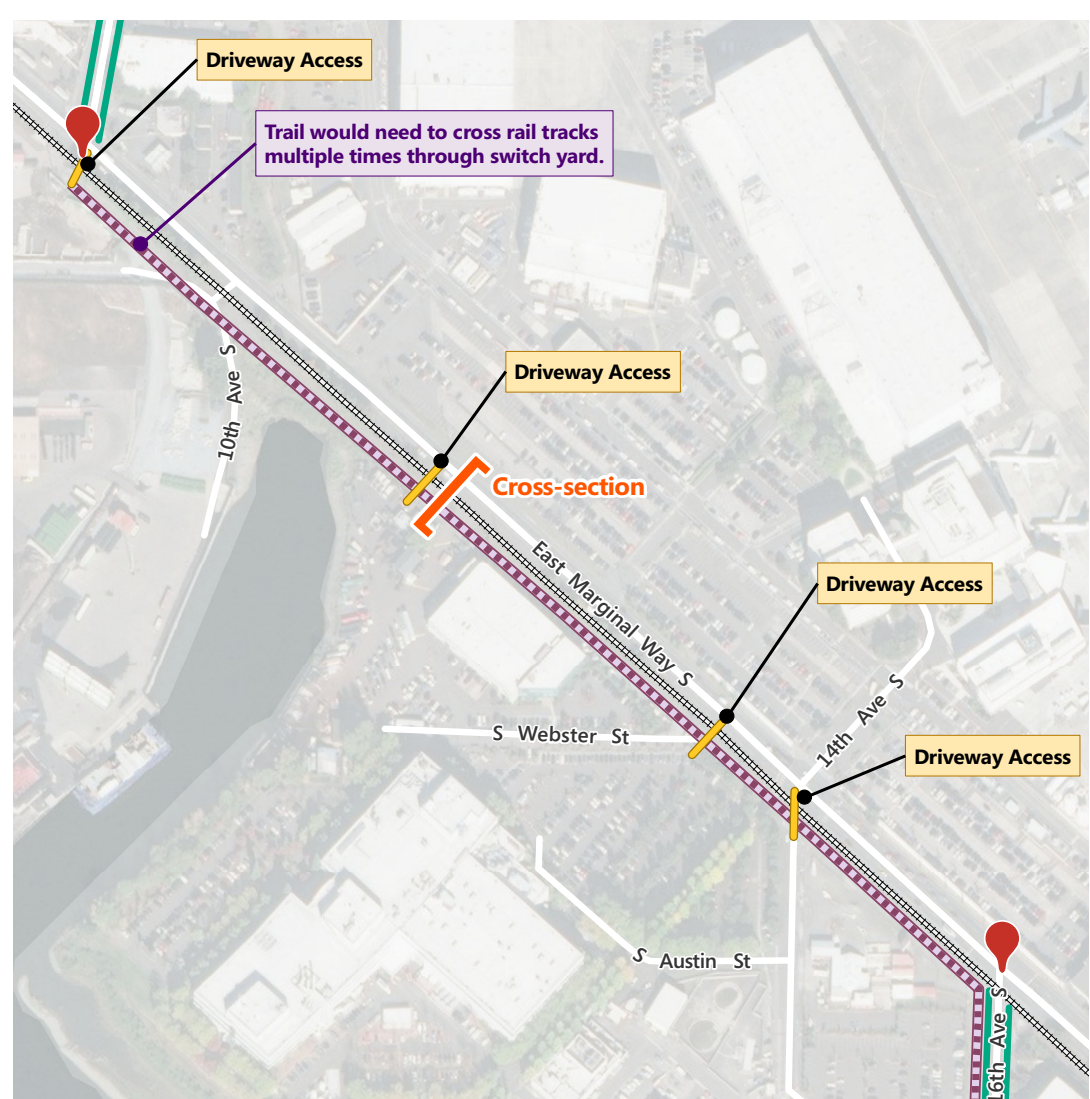
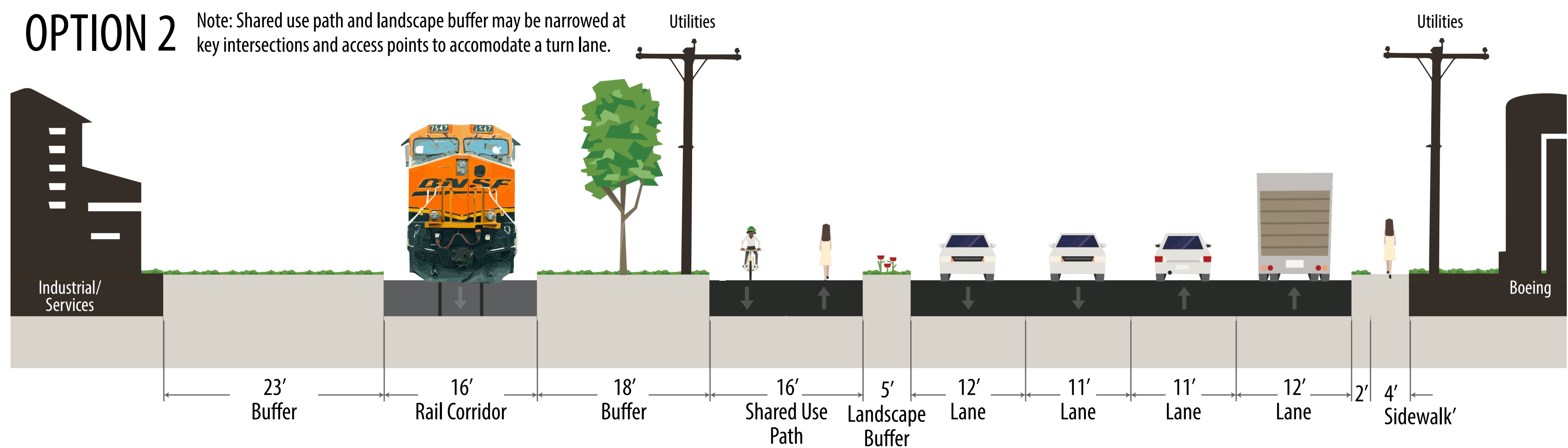
OPTION 1A

Note: Shared use path and landscape buffer may be narrowed at key intersections and access points to accommodate a turn lane.



OPTION 2

Note: Shared use path and landscape buffer may be narrowed at key intersections and access points to accommodate a turn lane.



OPTION 3

