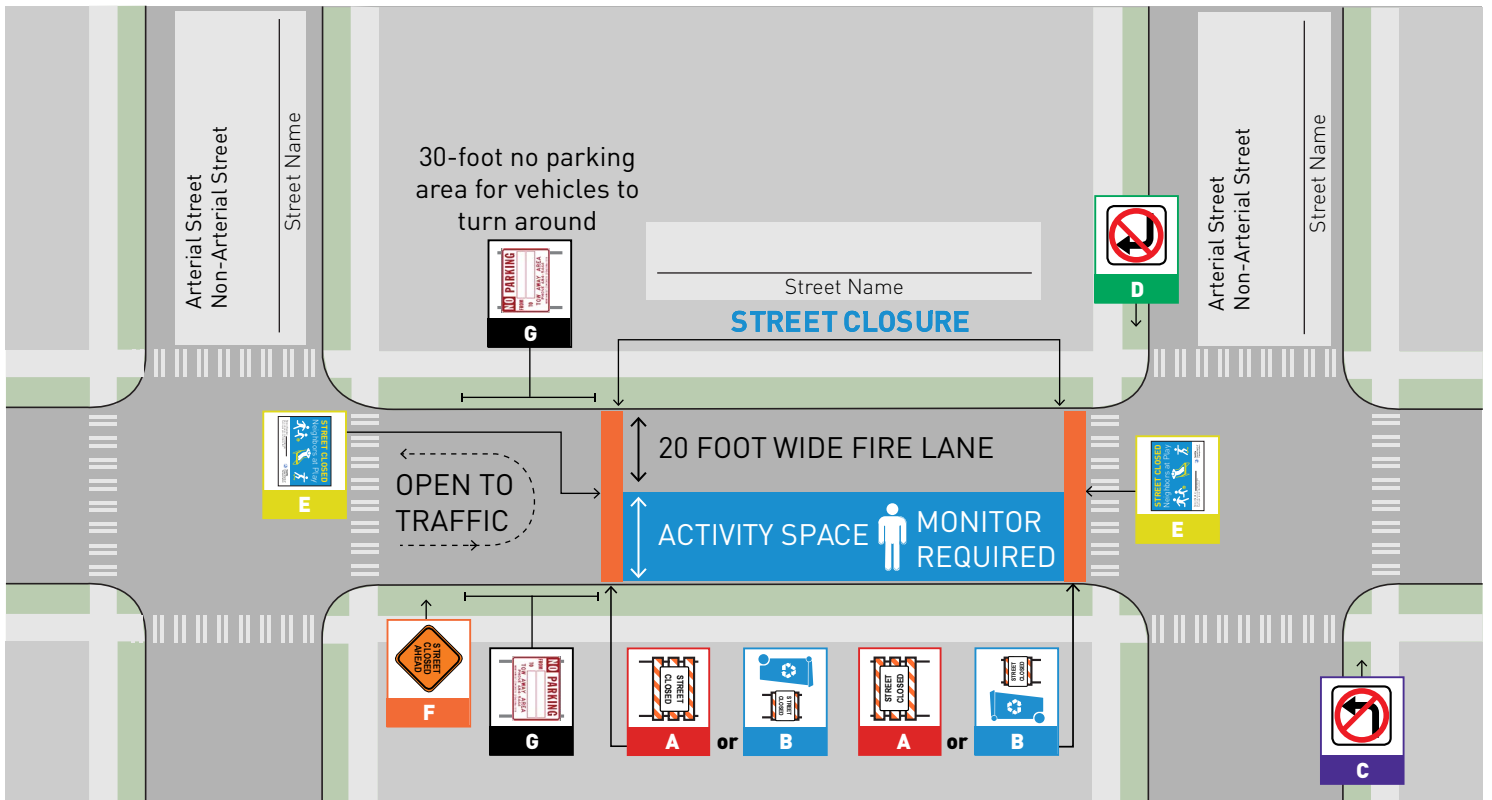


PLAY STREETS | PARTIAL STREET CLOSURE TEMPLATE



Use Type III barricades at arterial cross streets

4 feet min.
Variable max.

5 feet min.

STREET CLOSED
R11-2
3 feet x 2 feet

Type III Barricade
Street closed sign mounted to a Type III barricade

A

Use Type II barricades at non-arterial cross streets

2 feet min.



3 feet min.

STREET CLOSED
R11-2
3 feet x 2 feet

Type II Barricade
Street closed sign mounted to a Type II barricade or garbage / recycling bin

B

No Left / Right Turn Sign
Must be used to help guide traffic at an arterial intersection

R3 - 2
2 feet x 2 feet

R3 - 1
2 feet x 2 feet

C **D**


Informational Sign
Must be placed in the middle of the center of the street at the ends of the block

STREET CLOSED



E

Street Closed Ahead Sign
Required for arterial streets



W20 - 3
30 inches - 36 inches

F

No Parking Signs
Recommended for non-arterial streets
Required for arterial streets



R7 - T39 3
feet x 2 feet

G