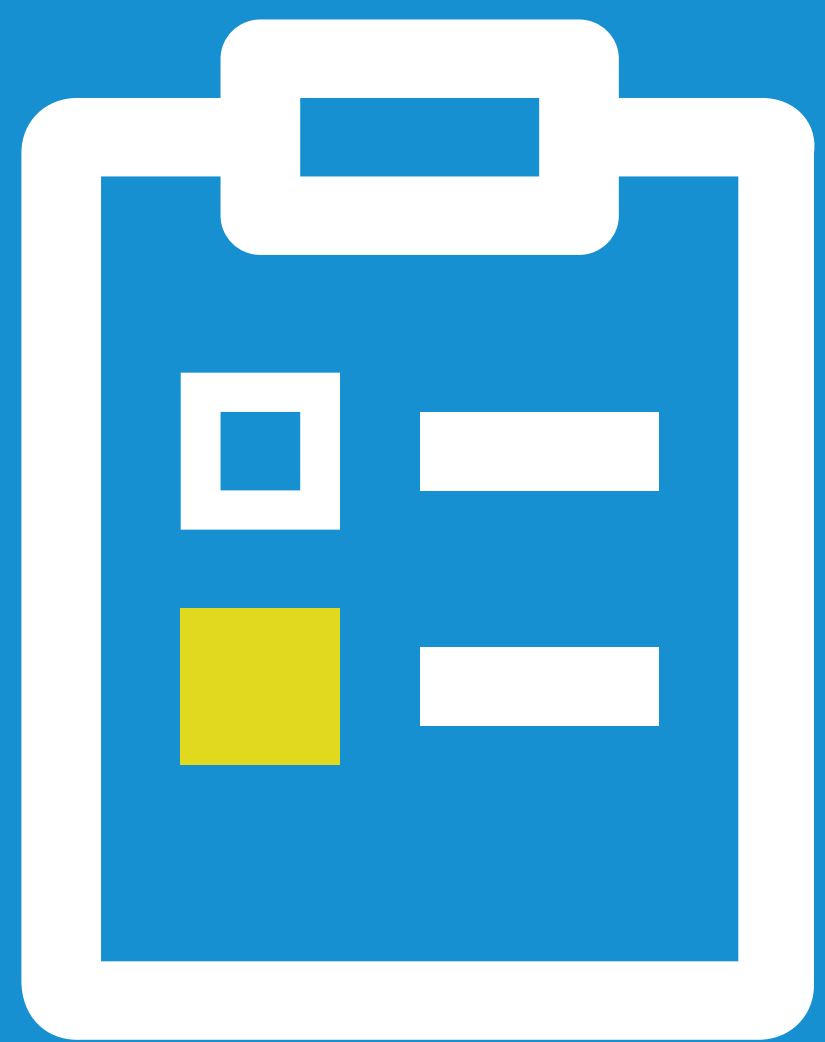


Accessible Mt. Baker

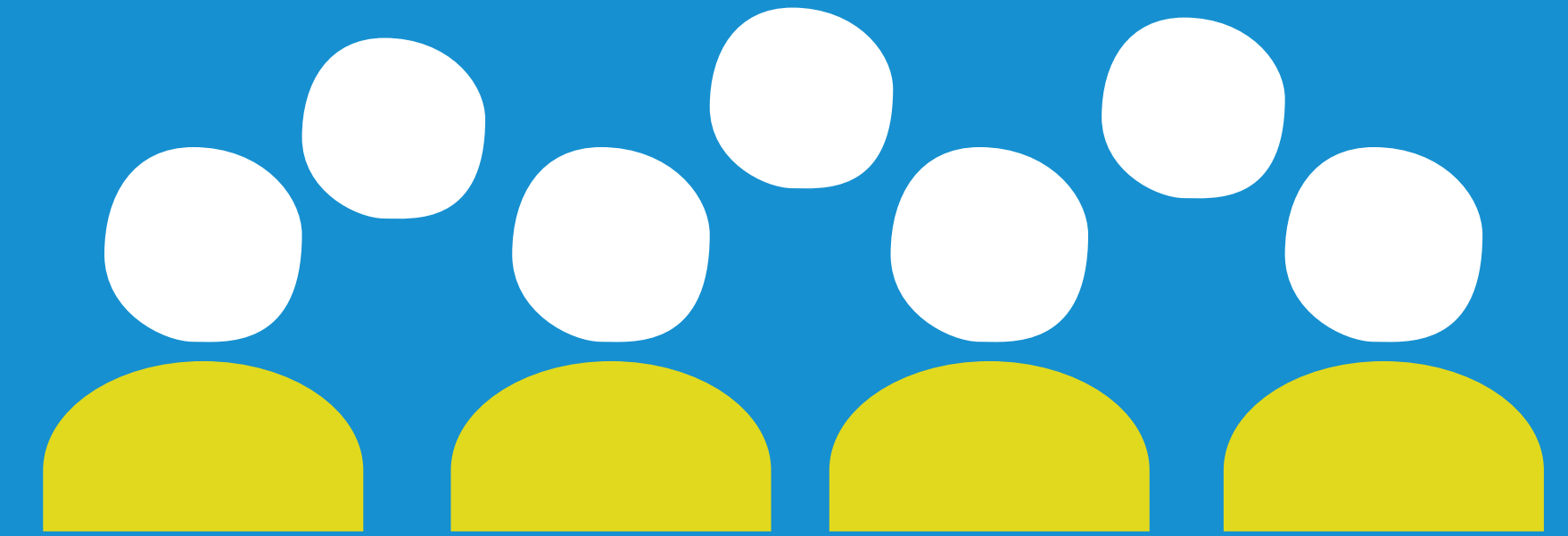
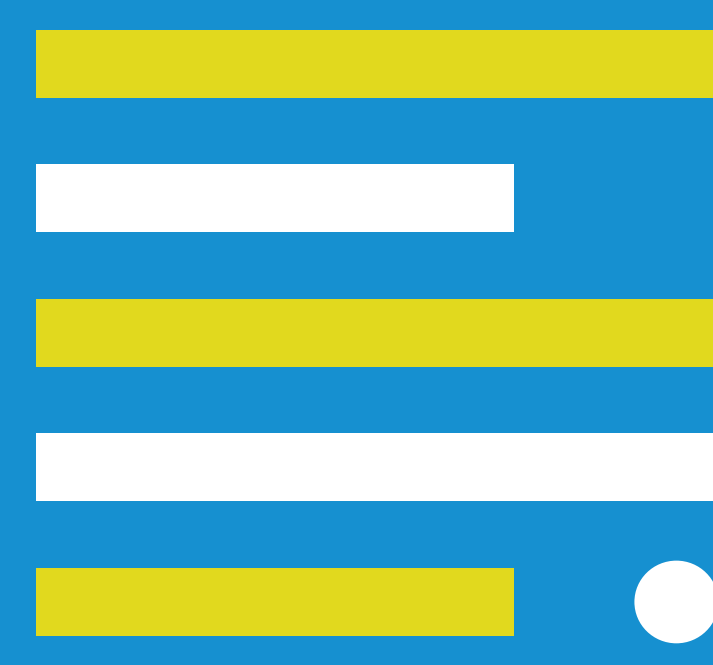
Outreach in Numbers



462
Total survey responses collected

317

Written Comments



263

General public participants



130 Asian and SE Asian participants

40 Chinese-speaking survey participants

32 Vietnamese-speaking survey participants

38 Tagalog-speaking survey participants

21 Khmer-speaking survey participants

56 East African participants

13 Amharic-speaking survey participants

15 Oromo-speaking survey participants

10 Somali-speaking survey participants



19
Community meetings

14

Non-English meetings with

7

multilingual communities



28
Youth Survey Participants



9 Different languages translated from key materials

39 Businesses reached by door-to-door outreach located within a 3-block radius from the light rail station



45

Stakeholders

