

**SW AVALON WAY, 35TH AVE SW,  
SW ALASKA ST**

**Paving, protected bike lanes,  
transit lane, spot parking removal**

**WELCOME**

---

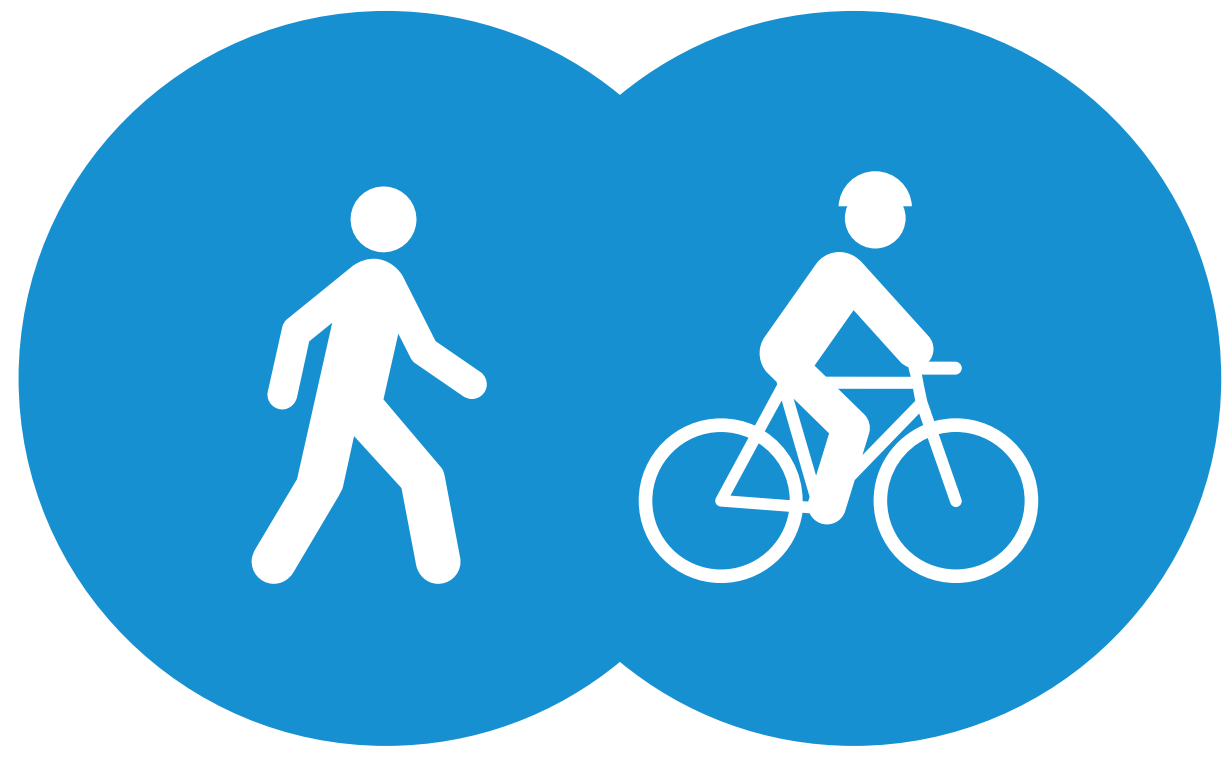
**Open House**  
**5:30-7:30 PM**

**Contact**

AvalonPaving@Seattle.gov  
(206) 684-4193

[www.seattle.gov/transportation/avalonpaving.htm](http://www.seattle.gov/transportation/avalonpaving.htm)

# WHAT WE'VE HEARD SO FAR



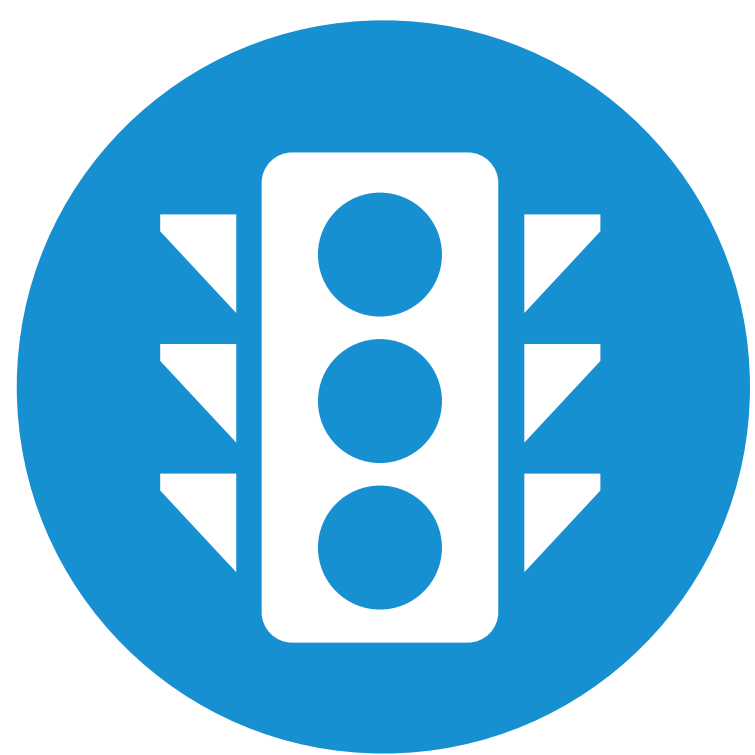
## Make streets safer for people walking and biking

- Prefer to walk and bike more than they do today
- Concerns about crossing safely when walking, biking, and driving
- Reduce speeding
- Expand the citywide bike network
- Add new crosswalks
- Reduce bus/bike mixing zones



## Increase predictability

- Confusion at unmarked intersections



## Reduce traffic congestion

- Install/keep dedicated transit lanes
- Evaluate intersections, including current traffic signal operations
- Add left-turn pockets



## Maintain transit service

- Need bus to get downtown



## Parking

- Keep parking at Luna Park businesses
- Add time restrictions to parking to encourage customer turnover
- Reduce "hide and ride" behavior near bus stops

**What'd we miss? Let us know.**

# PUBLIC INVOLVEMENT

## Project timeline

2017

2018

2019

### Planning

- Direct mail, email
- Stakeholder briefings
- Poster
- Open house
- Online surveys
- Media coverage
- Website

### Design

- Direct mail, email
- Stakeholder briefings
- Open house
- Online survey
- Media coverage
- Website

### Construction

- Direct mail, email
- Stakeholder briefings
- Open house
- Hotline
- Media coverage
- Website

*We are here*

Public Involvement

# WEST SEATTLE'S GROWING BIKE NETWORK



Map of bike facilities include trails, protected bike lanes, and neighborhood greenways.

# PAVING, PROTECTED BIKE LANES, TRANSIT LANE, SPOT PARKING REMOVAL

## PROJECT OVERVIEW

Starting as soon as 2019, we'll pave SW Avalon Way and segments of 35th Ave SW and SW Alaska St in West Seattle. Paving projects create opportunities to update street design, which can improve safety and move people and goods more efficiently in a growing Seattle.

This project will

- Add protected bike lanes to separate people biking from traffic
- Narrow the travel lanes and remove the center turn lane to encourage slower, safer speeds and easier crossings
- Keep RapidRide transit lane
- Consolidating parking in some places where needed

## PAVING AREAS

- **SW Avalon Way:** SW Spokane St to Fauntleroy Way SW
- **35th Ave SW:** SW Alaska St to SW Avalon Way
- **SW Alaska St:** 36th Ave SW to 35th Ave SW

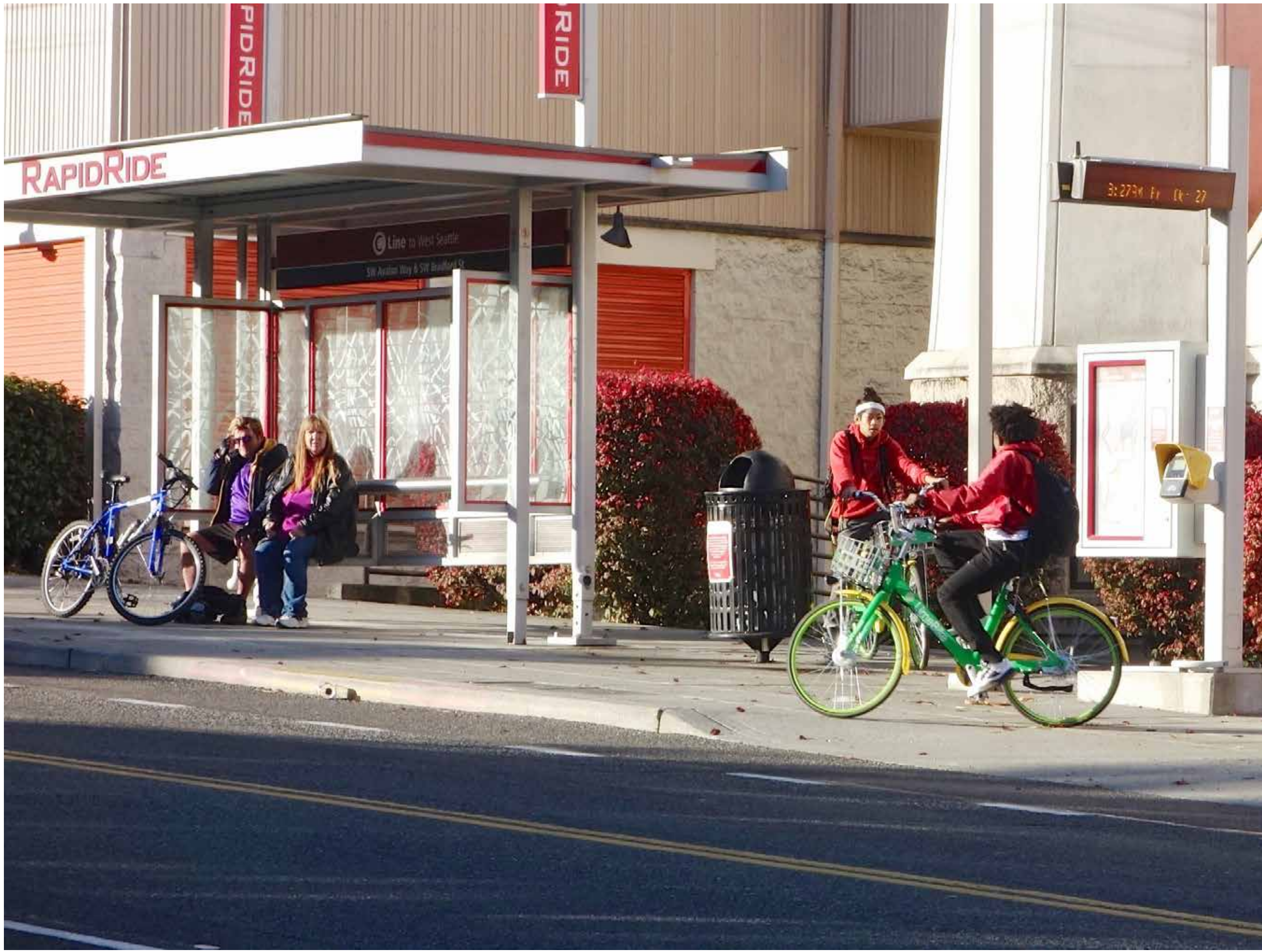


## PROGRAM BACKGROUND

Each year, we pave arterial streets in poor condition to make them safer, smoother, and to extend their useful life. Keeping our transportation system in a good state of repair helps lower the cost of future maintenance.

SW Avalon Way is in poor condition and 35th Ave SW is in very poor condition.

# WHAT'S NEW AT 60% DESIGN



Based on what residents, our transportation advisory boards, and business groups have told us, we've made design changes where possible without sacrificing safety.

## What we heard at the last open house:

- Provide more on-street parking on or near SW Avalon Way
- Decrease the number of conflict points for bikes and buses on SW Avalon Way
- Extend the left-turn pocket to westbound SW Alaska St from southbound 35th Ave SW

## How the design reflects feedback:

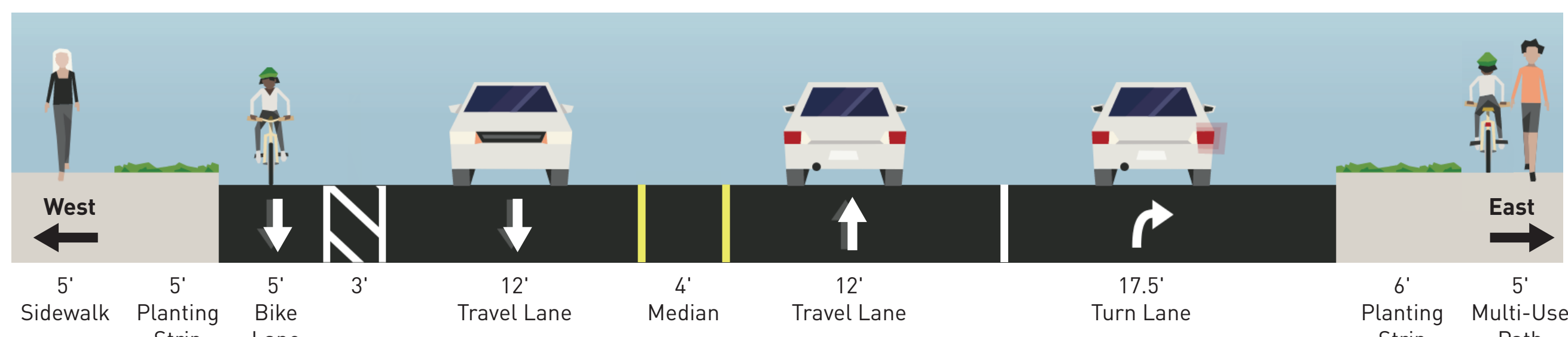
- We will be replacing the water main underneath the street along 35th Ave SW between SW Avalon Way and SW Alaska St
- Providing additional parking spaces on SW Avalon Way near Luna Park Cafe
- Converting some parking on SW Bradford St to short-term parking to encourage more turn over for businesses
- Clarifying load zones on SW Avalon Way near 35th Ave SW and near the Luna Park business district
- Moving the bike ramp to the multi-use pad behind the SW Spokane St Rapid Ride bus stop
- Extending the left-turn pocket to westbound SW Alaska St from northbound 35th Ave SW
- Coordinate with public and private projects and agencies

# SW AVALON WAY CROSS SECTIONS

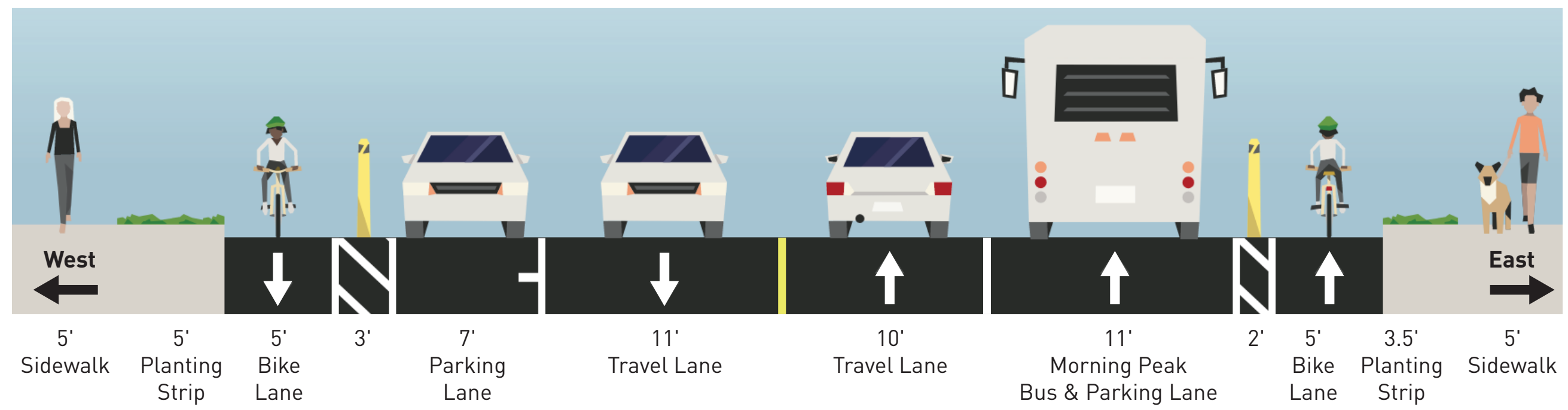


## Proposed cross sections

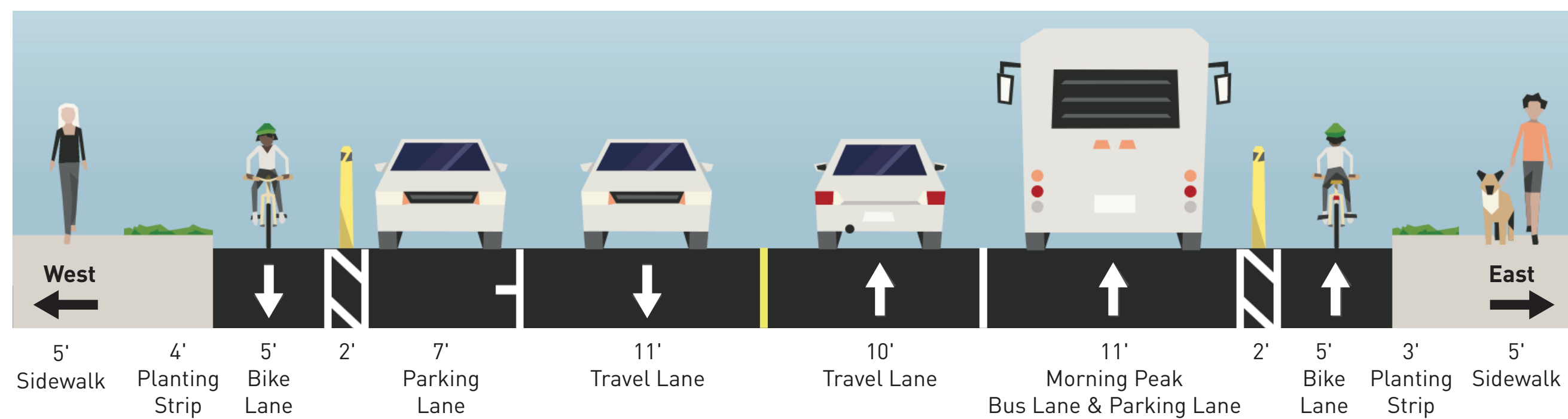
### 1 SW MANNING ST - SW SPOKANE ST



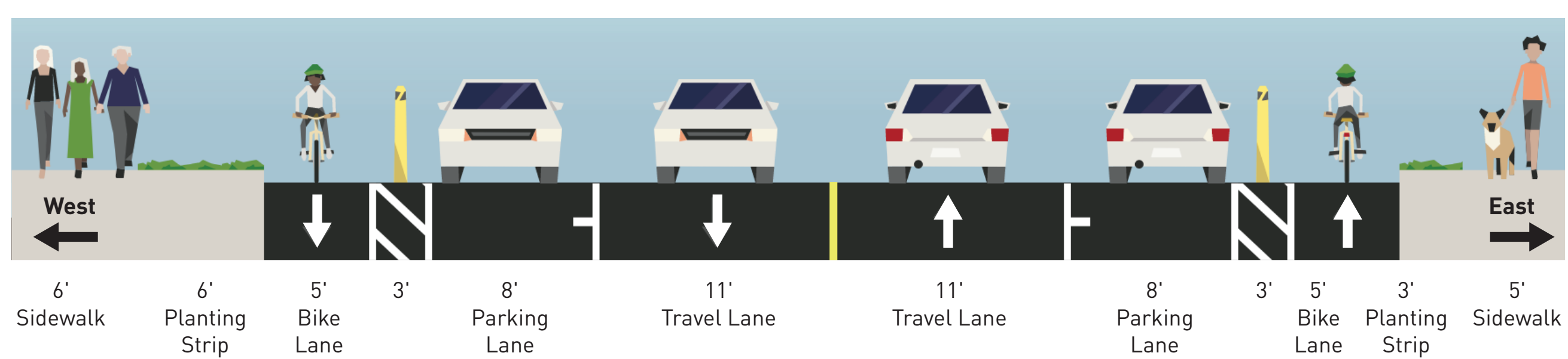
### 2 SW BRADFORD ST - SW MANNING ST



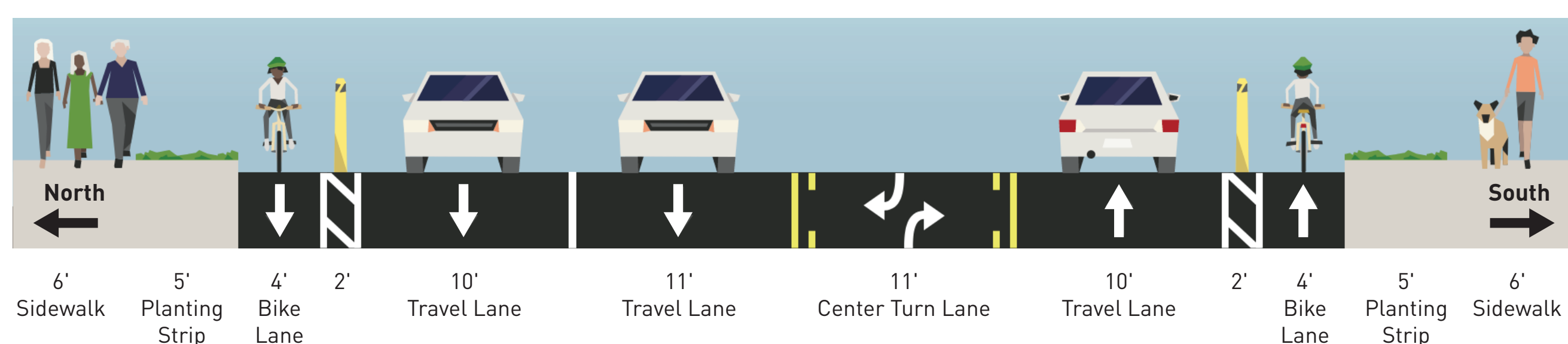
### 3 SW YANCY ST - SW BRADFORD ST



### 4 35TH AVE SW - SW YANCY ST

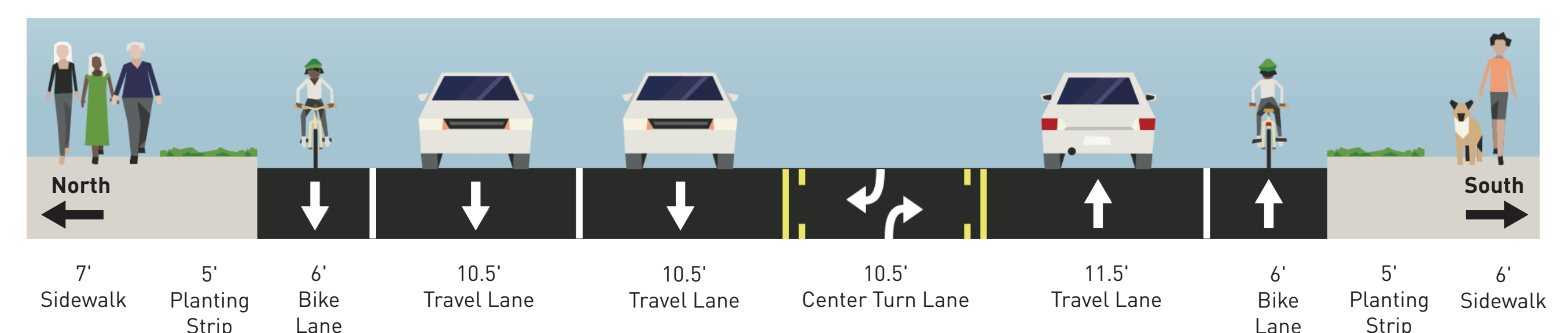
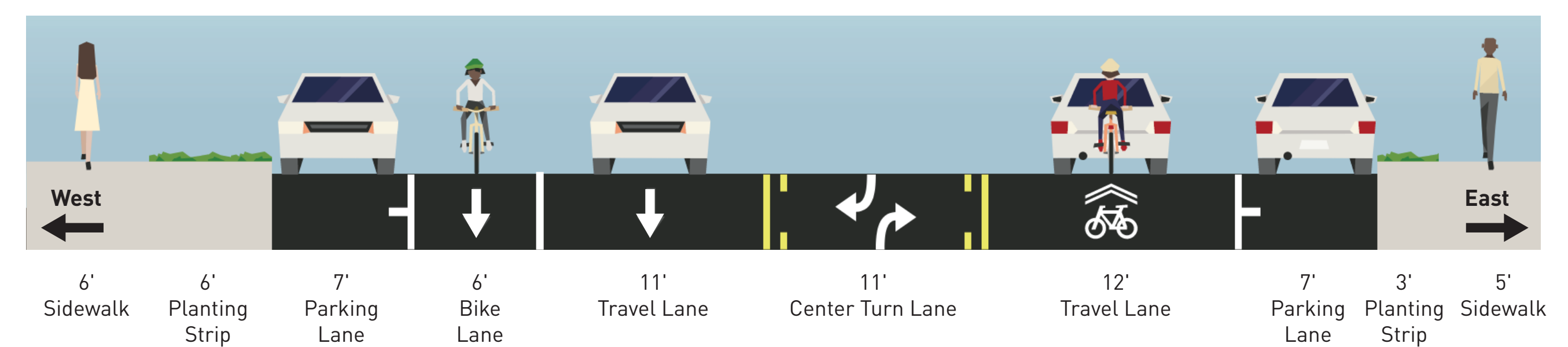
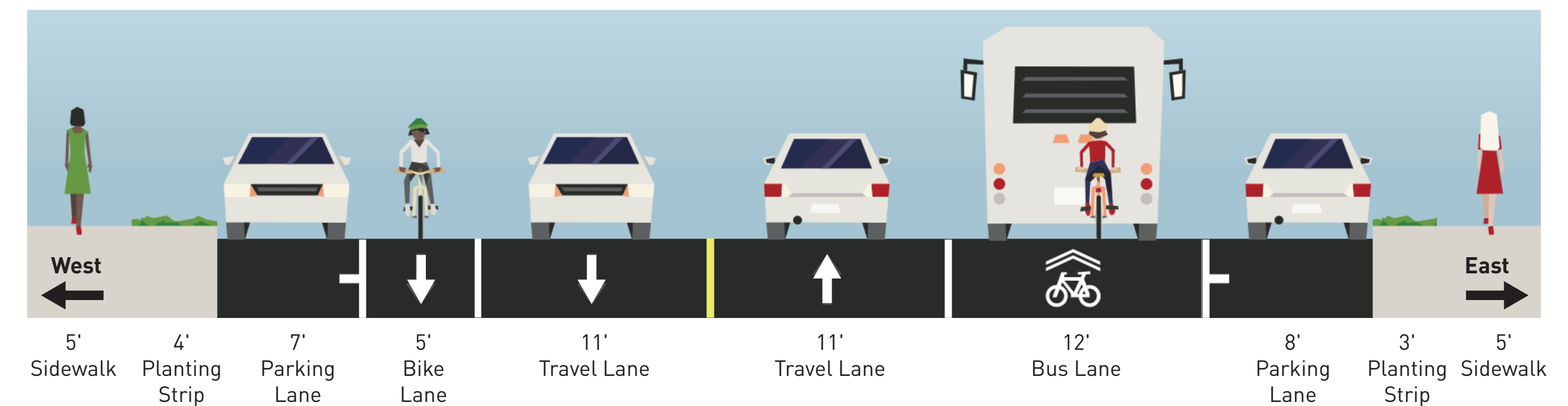
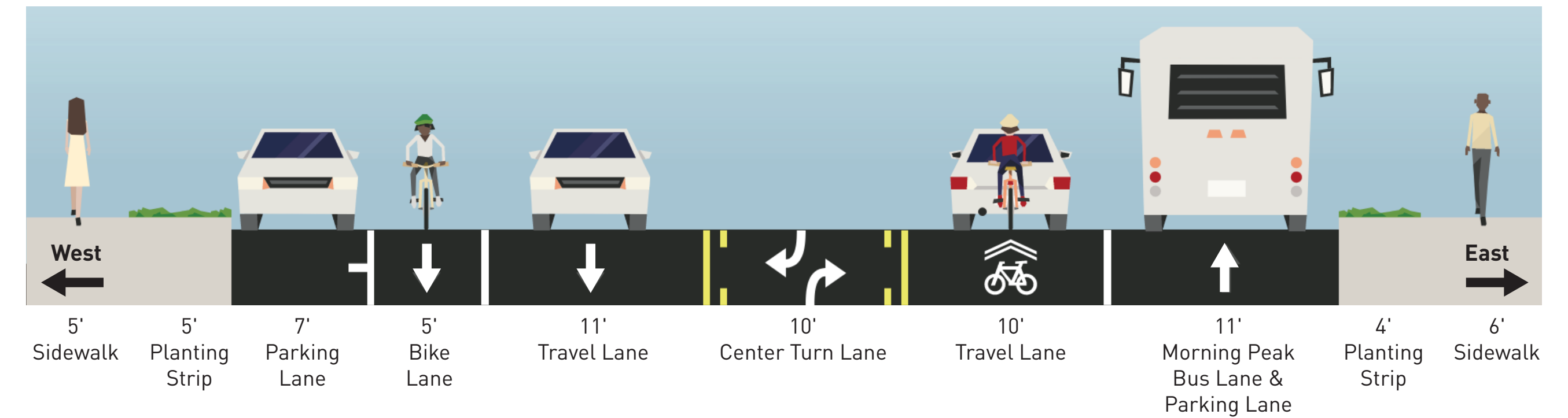
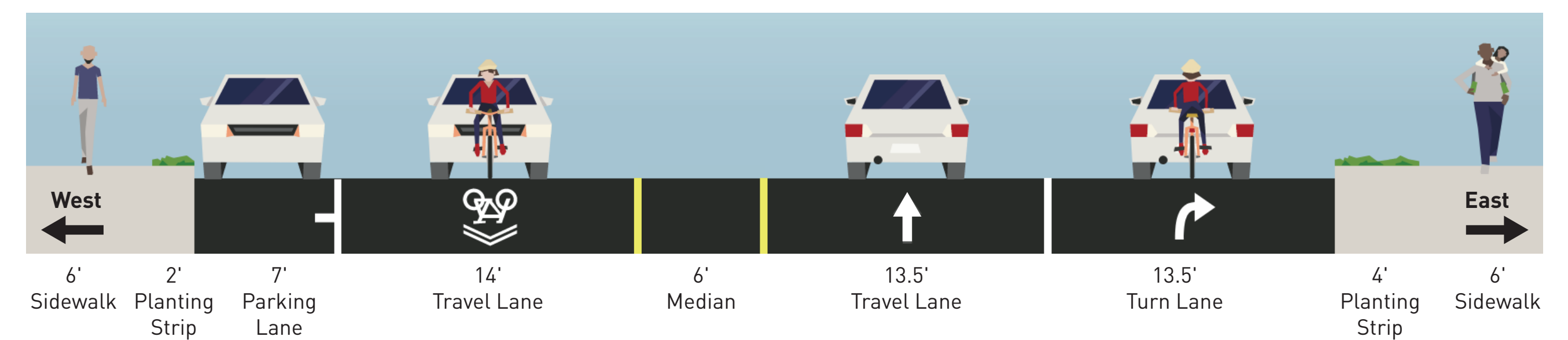


### 5 FAUNTLEROY WAY SW - 35TH AVE SW



NOTE: Cross sections 1, 2, 3, and 4 are looking north. Cross section 5 is looking east.

## Existing cross sections



NOTE: Cross sections 1, 2, 3, and 4 are looking north. Cross section 5 is looking east.

# PROJECT ELEMENTS

## Pave the Street



*Make spot repairs to the underlying pavement layers as needed. Pave new asphalt or concrete.*

## Add Protected Bike Lanes



*Add protected bike lanes to separate people biking from traffic and narrow the travel lanes to encourage slower, safer speeds and easier street crossings.*

## Stripe Lanes



*Apply new and visible lane markings.*

## Enhance Stormwater Quality



*Upgrade stormwater system to filter sediments and pollutants.*

## Upgrade Curb Ramps



*Make sidewalks more accessible for everyone and meet Americans with Disability Act standards.*

## Parking Removal



*Remove parking spaces to accommodate transit and protected bike lanes.*



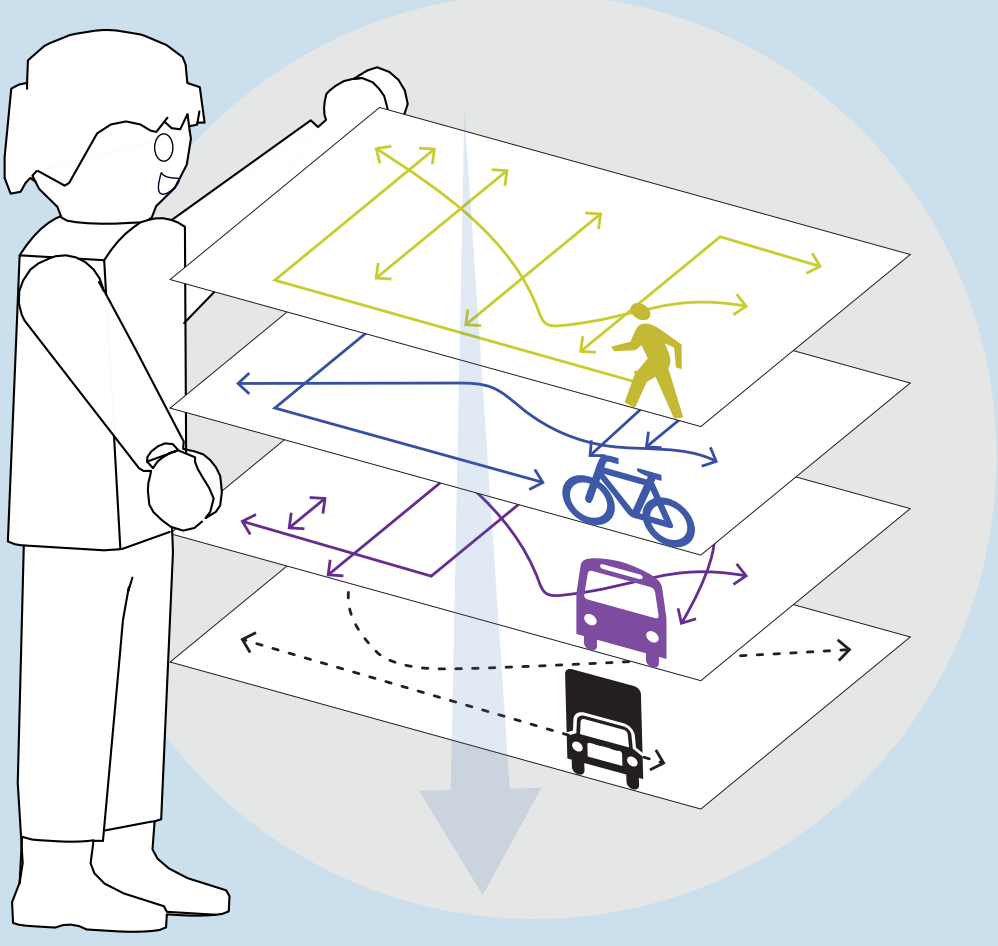
# GETTING INVOLVED

1

## Planning

### What we do:

Collect traffic data, review plans and gather community experiences to define options



### Tell us:

What is working and not working?

Does the option make sense for your community?

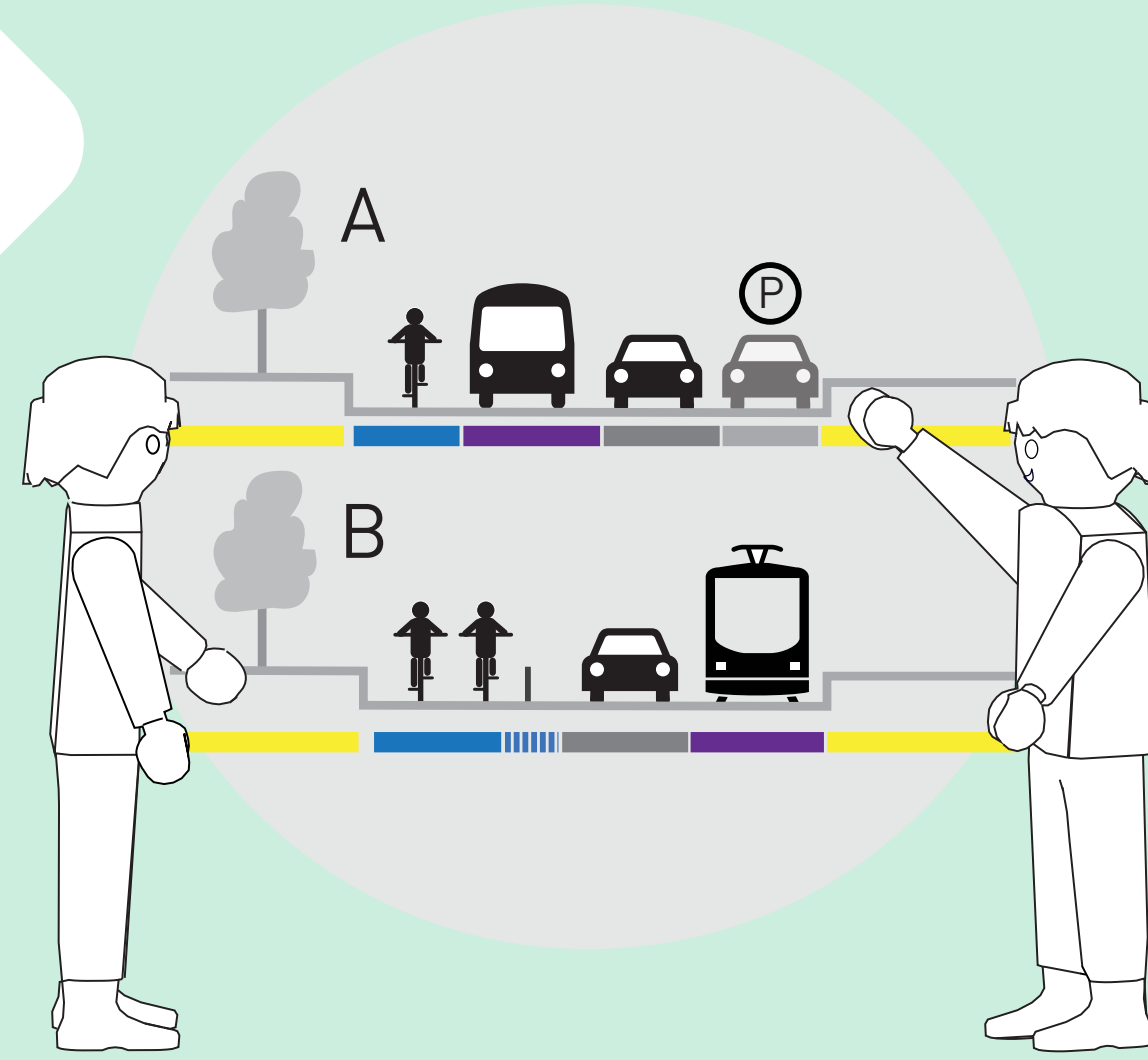
How do you get around your neighborhood and where are you going?

2

## Design

### What we do:

Share updates as more details are known



### Tell us:

How does the design work for you as a traveler?

Does the design capture what the community said?

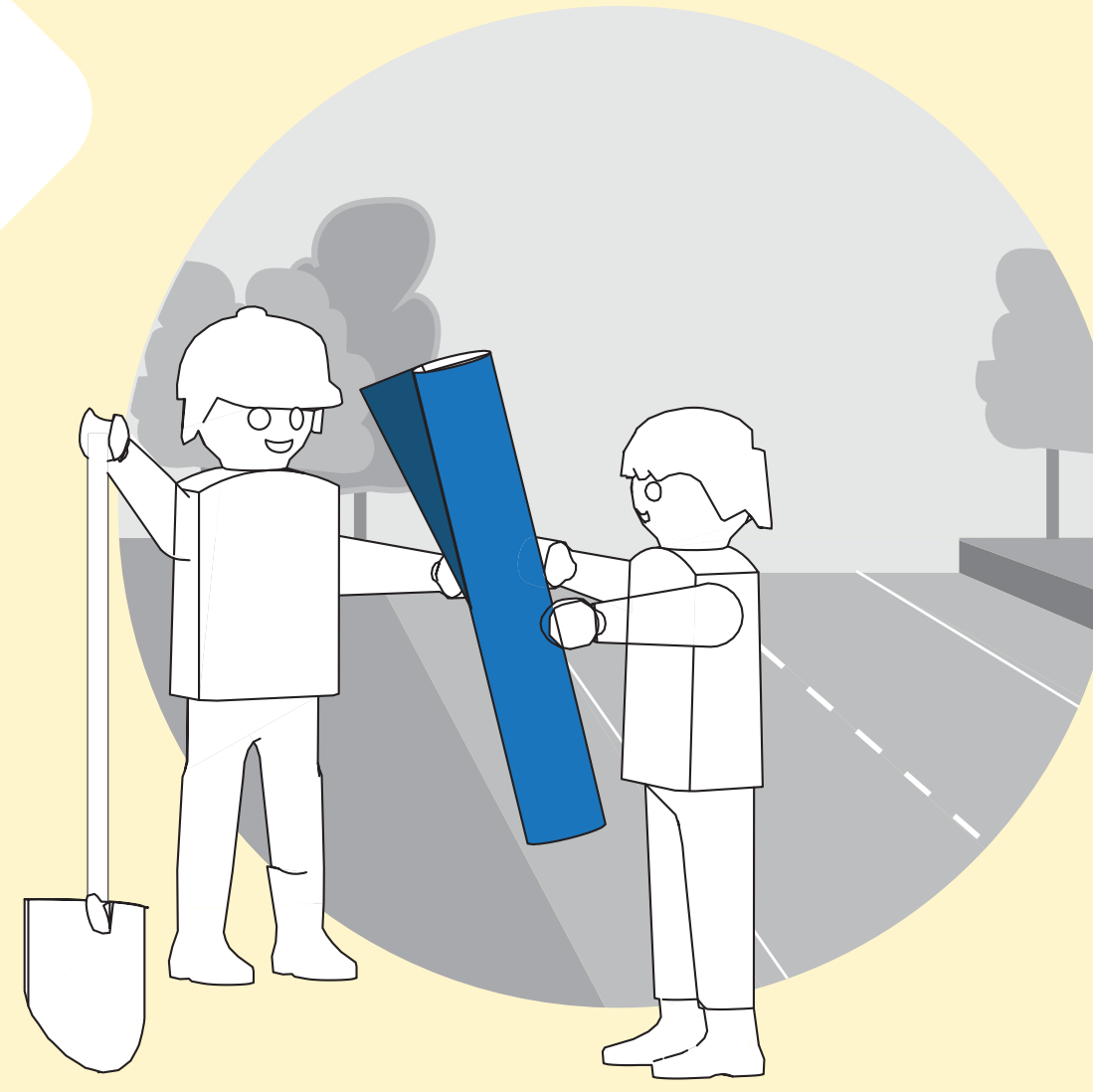
Are we missing something?

3

## Construction

### What we do:

Provide construction schedule, expected impacts, and a contact for questions



### Tell us:

How will construction affect your ability to load and unload?

How will construction affect customers with mobility challenges?

Are there important dates or events we need to be aware of?

4

## Evaluation

### What we do:

Gather feedback from those that work, live, play, and travel near the completed project, and collect traffic data



### Tell us:

Were there any unexpected results from the project?

Do you think the project met its goals?



# WHAT TO EXPECT DURING CONSTRUCTION

Starting as soon as spring 2019 and lasting through summer 2020, this project will make improvements on SW Avalon Way, 35th Ave SW, and SW Alaska St.

We will be paving the road, putting in a new water main, building new sidewalks, driveways, and curb ramps, and installing a new protected bike lane.

## What we know today about construction:

- Expected to begin spring 2019
- Should last through at least summer 2020
- There will be traffic control with lane closures and detours
- Closures will create traffic congestion, longer travel times, and spillover traffic to adjacent streets
- Sidewalk and side street closures
- Temporary water shut-offs
- Noise, dust, and vibrations
- Large trucks, heavy machinery, and work crews



## Outreach commitments

Major construction is inconvenient and disruptive to communities. There's no way around that fact. But we need this work to keep Seattle's public infrastructure in a state of good repair – it's an investment in our future.

Our outreach promise is to keep you informed. That means we will work to provide you with timely, accurate information about what's happening.

Thank you for your patience and understanding.