

NORTHGATE PED/BIKE BRIDGE PROJECT

Connecting communities east and west of I-5 in North Seattle

WINTER 2019



PROJECT OVERVIEW

We're building a new, accessible, all ages and abilities pedestrian and bike bridge over Interstate 5 (I-5) in Northgate. The Northgate Ped/Bike Bridge will improve access to communities, services, and opportunities on the east and west sides of I-5 in Northgate and Licton Springs, helping knit together a historically divided area. Once construction on Sound Transit's Link light rail station is complete in 2021, the bridge will help connect the neighborhood's thriving job and retail centers with the rest of the city and the region by providing direct access to the major transit hub.

The new bridge will span roughly 1,900 feet over I-5, landing at North Seattle College on the west side and at 1st Ave NE and NE 100th St, near the future light rail station, on the east side.

WHAT'S HAPPENING NOW?

- We completed environmental review in 2018 and are working on completing permitting
- Construction is scheduled to begin in mid-2019

IF YOU NEED THIS INFORMATION TRANSLATED, please call (206) 905-3620.

Si necesita traducir esta información al español, llame al (206) 905-3620.

Nếu quý vị cần thông tin này chuyển ngữ sang tiếng Việt xin gọi (206) 905-3620.

당신이 번역이 정보를 필요로하는 경우에, (206) 6905-3620로 전화 해주십시오.

PROJECT INFORMATION & CONTACT

NorthgateBridge@seattle.gov, (206) 905-3620
www.seattle.gov/transportation/northgate-pedestrian-and-bicycle-bridge



Seattle
Department of
Transportation



Community-centered design

We began early design outreach in 2014, engaging the community and stakeholders in review of three bridge alternatives. By the fall of 2014, the truss tube design was chosen as a preferred alternative. Design outreach continued in 2015, when we hosted an open house featuring such elements as bridge alignment, safety, lighting, and the environmental review process.

The project paused in 2016 when a cost evaluation revealed the design was over the approved budget. We formed a new design team between 2016 and 2017.

In August 2017, we held in-person and online open houses to debut the new design. At the two open houses, participants provided design feedback on details such as pavement textures, lighting, and landing treatments at each end of the bridge.

We also worked closely with our project partner North Seattle College (NSC) throughout 2017 and 2018. NSC invested significant time and effort in refining the west side approach so that it will have the least impact on natural habitat, while still maintaining direct public access to the bridge.



DESIGN OUTREACH BY THE NUMBERS

90,000 mailers SENT TO PROJECT AREA ADDRESSES	1,000+ EVENT INVITATION emails SENT THROUGH THE PROJECT LISTSERV	400+ visitors TO THE online open house
250+ attendees AT OPEN HOUSES AND DROP-IN SESSIONS	50+ community briefings	10+ events WHERE WE SPOKE WITH 1,000+ COMMUNITY MEMBERS

What we've heard

Throughout project design, we received valuable community feedback. Below are examples of themes we heard and how they were addressed.

SAFETY AND SECURITY FEEDBACK: Ensure safety for all users, especially at night	We made the bridge design straighter to maintain clearer sightlines. The bridge will also have handrail lighting and emergency callboxes. For the section of the bridge spanning I-5, 10-foot-tall cable net throw barriers will help prevent people from throwing materials below or climbing the bridge railing.	WAYFINDING AND TRAFFIC CONTROL FEEDBACK: Separate people walking from people biking on the bridge	We'll encourage all users to keep right. Making the bridge shared and bi-directional will encourage bicycles and other wheeled devices to slow down, while separating modes may have the opposite effect.
DESIGN FEEDBACK: Make the bridge wider	Earlier designs showed a wider and covered bridge, but it was too costly to build. The current design meets budget and will also be able to support the projected 1,500 bridge users.	ENVIRONMENTAL FEEDBACK: Mitigate environmental impacts to the wetlands and trails west of I-5	Mitigation measures include replanting trees at a ratio of at least 2:1, and the site will be replanted with native species after construction. The bridge's drainage system is designed to enhance wetlands on the west side. In addition, one trail that is being displaced near the west landing of the bridge will be relocated.
PARKING FEEDBACK: Replace parking removed during bridge construction	A portion of Sound Transit's Northgate Station Garage has been designed to replace lost parking.	ACCESSIBILITY FEEDBACK: Make the slope of bridge approaches less steep	We reduced the bridge slope from nearly 8.0% to 4.3% except between the Sound Transit mezzanine and the NE 100th street level, which remains near 8.1% for less than 30 feet. All grades are ADA compliant.

Take a walk over the bridge

The Northgate Ped/Bike Bridge will provide not only an important community and regional connection, but also a unique experience for those using it. The images below give you a look at key stops west to east along on the bridge.

BRIDGE SNAPSHOT

1,900
feet long

WEST APPROACH
DESIGNED TO
maintain sightlines
AND PRESERVE
natural habitat

10-minute
walk
FROM ONE SIDE TO THE OTHER

16
FEET WIDE

ANTICIPATED
1,500
USERS PER DAY

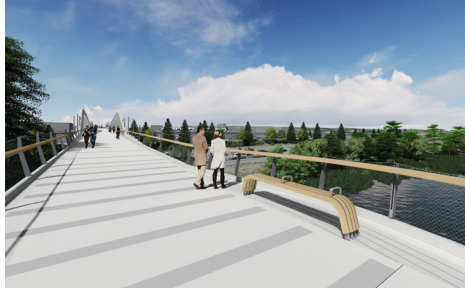
EAST APPROACH
DESIGNED TO
preserve parking

1 | NEIGHBORHOOD CONNECTION



Begin walking onto the bridge via the multi-use path at the north end of North Seattle College. The bridge rises gently at a grade of approximately 4% and allows for direct connection and open sightlines.

2 | WILDLIFE OVERLOOK



As you head east toward the light rail station, you'll find a wildlife overlook that offers a resting spot and a view of the pond and wetlands to the south.



3 | NEIGHBORHOOD GATEWAY

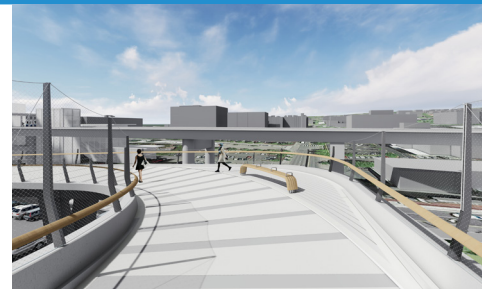


Continuing along the span above I-5, the sweeping lines of the bridge create a memorable point of passage between communities on each side.

4 | NE 100TH ST AND NORTHGATE STATION OVERLOOK



Descending the slope of the eastern approach, the NE 100th St overlook provides views of arriving and departing trains at the Link light rail station. A bridge spur connects people using the bridge directly to the Sound Transit station mezzanine. You can also continue toward the eastern bridge landing, at 1st Ave NE and NE 100th St.



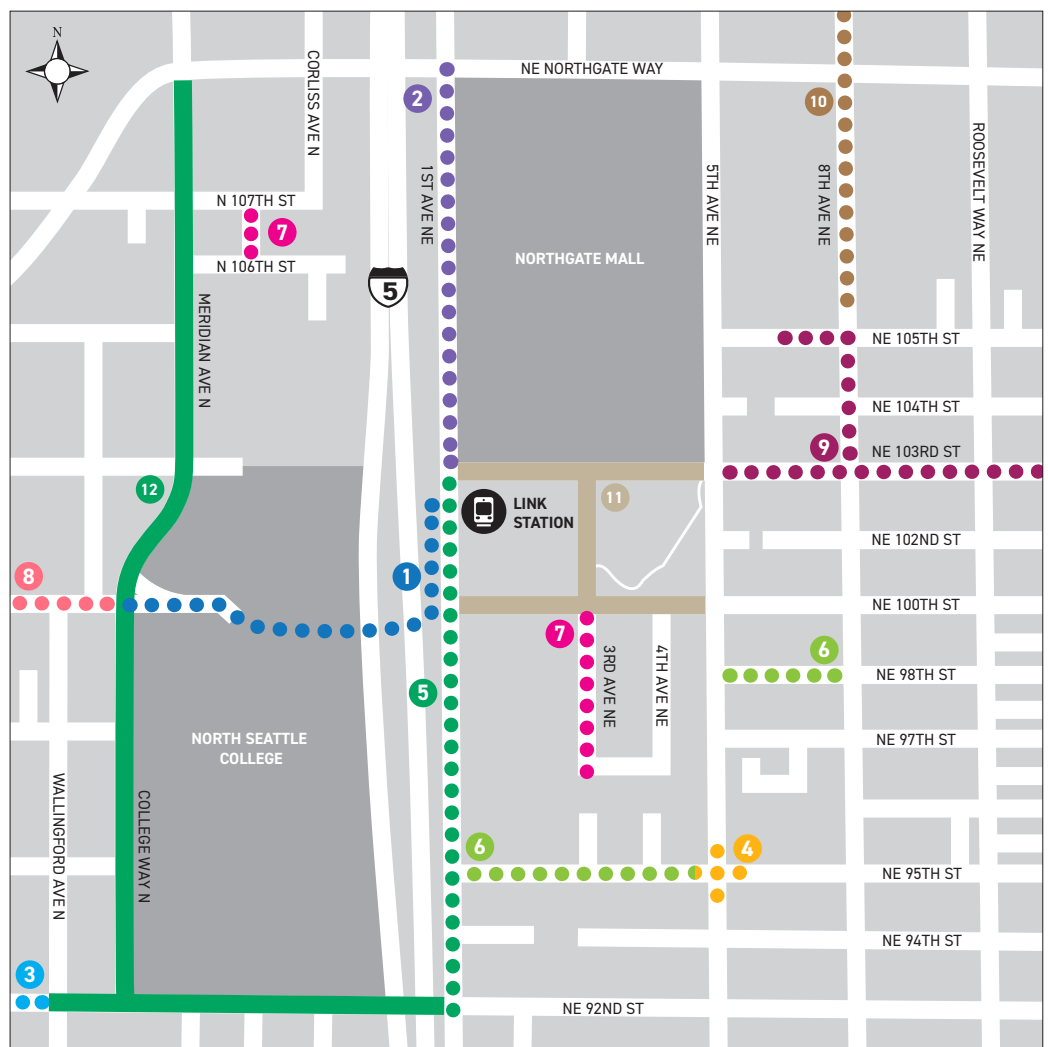
PROJECT SCHEDULE

	2018	2019	2020	2021
Planning and design	[Blue bar]			Sound Transit Link light rail station opens
Environmental review and approval	[Blue bar]			
Bridge construction		[Yellow bar] We're here!	[Blue bar]	Bridge opens!

OTHER PLANNED WALKING AND BIKING IMPROVEMENTS

The Northgate Ped/Bike Bridge is one of many improvements planned for the area. We will create a more walkable and bikeable Northgate through investments that benefit all ages and abilities. This map highlights planned improvements for people walking and biking in the area.

- 1 ●● Northgate Ped/Bike Bridge
- 2 ●● Multi-use path
- 3 ●● Safe Routes to School Neighborhood Greenway
- 4 ●● Crossing improvements
- 5 ●● Protected bike lane
- 6 ●● Sidewalk
- 7 ●● Pedestrian pathway
- 8 ●● North Seattle Neighborhood Greenway (west to Crown Hill)
- 9 ●● Northgate Neighborhood Greenway - Maple Leaf connection
- 10 ●● Northgate Neighborhood Greenway - Pinehurst connection
- 11 [Brown bar] Street concept plan (future improvements to be completed by private development)
- 12 [Green bar] Existing protected bike lane



PROJECT INFORMATION & CONTACT

NorthgateBridge@seattle.gov, (206) 905-3620
www.seattle.gov/transportation/northgate-pedestrian-and-bicycle-bridge

