

## CONSTRUCTION FAQs

**Question:** How long is construction expected to last?

**Answer:** Construction is scheduled to begin in early 2020 and to last until fall 2021.

**Question:** Will there be closures of I-5 during construction of the bridge?

**Answer:** We do anticipate some closures during the installation of the spans over I-5 and they'll occur on weekends and at night. We'll coordinate with WSDOT to finalize the details and the public will be notified in advance of the closure.

**Question:** What are the mitigation plans for wetlands and trails west of I-5?

**Answer:** Mitigation measures include replanting trees at a ratio of at least 2:1, and the site will be replanted with native species after construction. The bridge's drainage system is designed to enhance wetlands on the west side. In addition, one trail that is being displaced near the west landing of the bridge will be relocated.

**Question:** How will parking be impacted during and after construction?

**Answer:** During construction, the North Seattle Park and Ride (10001 1st Ave NE) will be temporarily unavailable due to the staging of equipment and materials.

## SCHEDULE

| Phases                          | 2019 | 2020 | 2021 |
|---------------------------------|------|------|------|
| Permitting and pre-construction |      |      |      |
| Bridge construction             |      |      |      |

## STAY INFORMED

The best way to stay up to date on construction progress and impacts is to visit our project webpage and sign up for email updates at [www.seattle.gov/transportation/NorthgatePedBridge](http://www.seattle.gov/transportation/NorthgatePedBridge). You can also reach us during construction by calling 206-905-3620.

**IF YOU NEED THIS INFORMATION TRANSLATED**, please call (206) 905-3620.

Si necesita traducir esta información al español, llame al (206) 905-3620.

Nếu quý vị cần thông tin này chuyển ngữ sang tiếng Việt xin gọi (206) 905-3620.

당신이 번역이 정보를 필요로 하는 경우에, (206) 905-3620로 전화 해주십시오.

# NORTHGATE PED/BIKE BRIDGE PROJECT

Connecting communities east and west of I-5 in North Seattle

winter 2020

We're starting construction!



## PROJECT OVERVIEW

We're constructing a new, accessible, all ages and abilities pedestrian and bicycle bridge over Interstate 5 (I-5) in Northgate. The bridge will span roughly 1,900 feet, landing at North Seattle College on the west side and at 1st Ave NE and NE 100th St, near the future Sound Transit Link light rail station, on the east side. Once construction on the light rail station is complete in 2021, the bridge will help connect the neighborhood's thriving job and retail centers with the rest of the city and the region by providing direct access to the major transit hub.

## PROJECT BENEFITS

- A new connection over I-5, decreasing travel times for people walking and biking between the 2 sides of the freeway
- Safety improvements and access for people walking and biking throughout the Northgate area
- Better access to regional transit at the King County Transit Center and future Link light rail station, resulting in increased use of transit facilities

### BRIDGE SNAPSHOT

**1,900**  
feet long

WEST APPROACH  
DESIGNED TO  
**maintain sightlines**  
AND PRESERVE  
**natural habitat**

**10-minute**  
walk  
FROM ONE SIDE TO THE OTHER

**16**  
FEET WIDE

ANTICIPATED  
**1,500**  
USERS PER DAY

EAST APPROACH  
DESIGNED TO  
**preserve parking**

PROJECT INFORMATION & CONTACT  
NorthgateBridge@seattle.gov, (206) 905-3620  
[www.seattle.gov/transportation/NorthgatePedBridge](http://www.seattle.gov/transportation/NorthgatePedBridge)



PROJECT INFORMATION & CONTACT  
NorthgateBridge@seattle.gov, (206) 905-3620  
[www.seattle.gov/transportation/NorthgatePedBridge](http://www.seattle.gov/transportation/NorthgatePedBridge)



## BRIDGE EXPERIENCE

Upon construction completion, the Northgate Ped/Bike Bridge will provide an important regional connection and a unique experience for those using it. The images below give you a look at key stops west to east along on the bridge.



### Neighborhood connection

Access to the bridge while traveling east (via the multi-use path at the north end of North Seattle College) rises gently at a grade of approximately 4% and allows for direct connection and open sightlines.



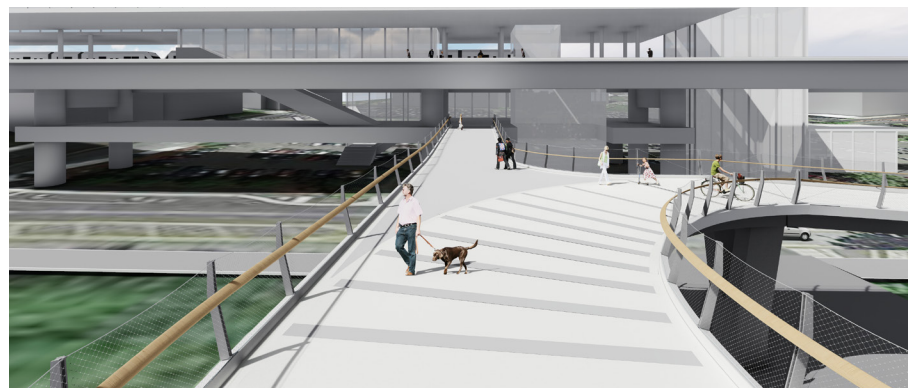
### Wildlife overlook

Heading east toward the light rail station, a wildlife overlook offers a resting spot and a view of the pond and wetlands to the south.



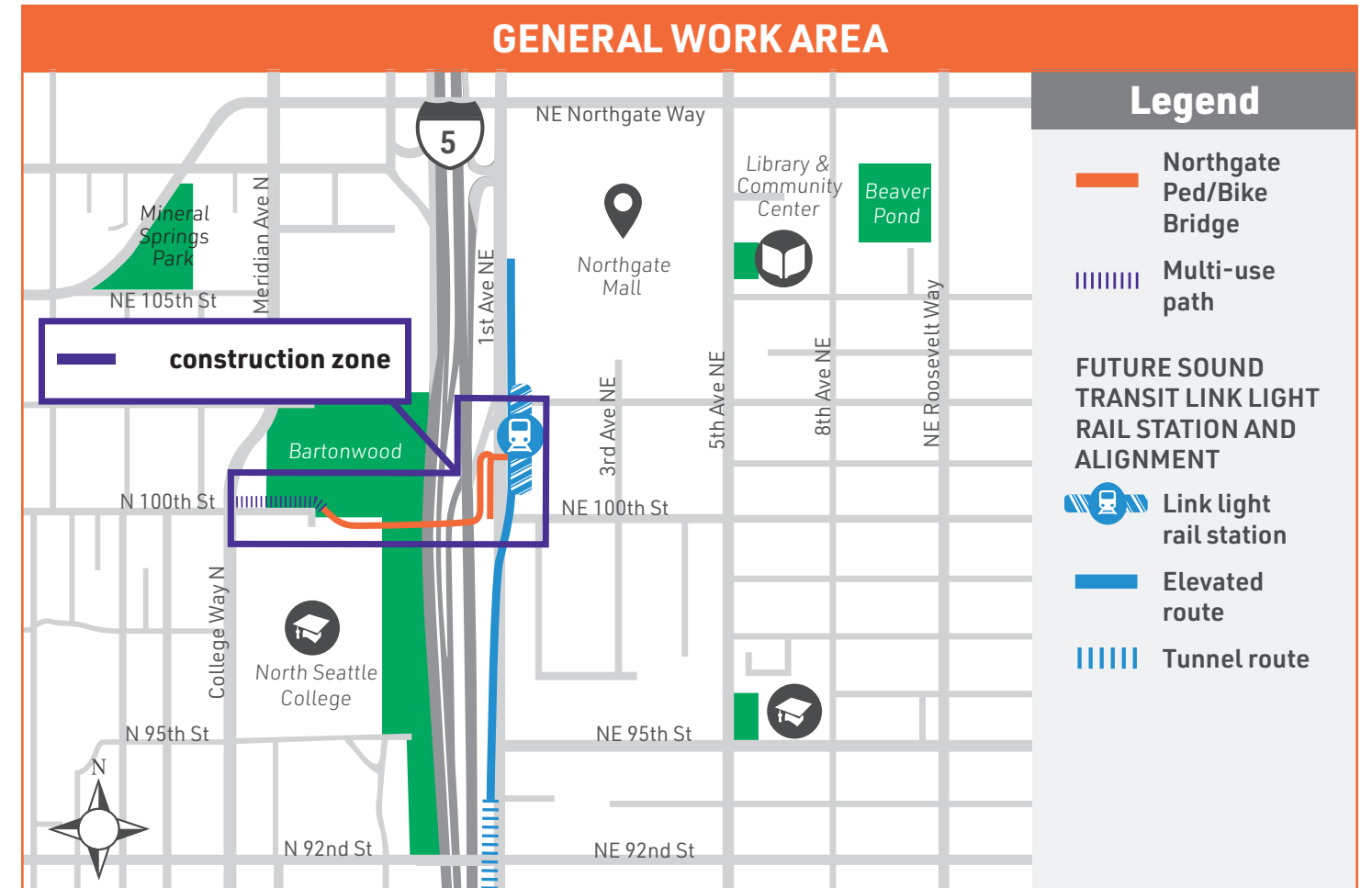
### Neighborhood gateway

Continuing along the span above I-5, the sweeping lines of the bridge create a memorable point of passage between communities on each side.



### Northgate station overlook

A bridge spur connects people using the bridge directly to the Link light rail station mezzanine. You can also continue toward the eastern bridge landing, at 1st Ave NE and NE 100th St.



## OUR COMMITMENT TO BEING A GOOD NEIGHBOR

Keeping you informed is a top priority. Before and during construction, we'll engage with businesses, residents, and other nearby neighbors using multiple channels, including:

- Advance notification of any impacts to people driving, walking, or biking
- Maintaining access to businesses
- Holding drop-in sessions to provide opportunities for feedback and project team interaction
- Coordinating with North Seattle College faculty, staff, and students
- Communicating via project hotline, inbox, and webpage to provide information and answer questions

## WHAT TO EXPECT DURING CONSTRUCTION

- Dust, noise, and truck and crane activity
- Some nighttime work
- Detours for people walking and biking
- Traffic lane restrictions and closures
- Equipment staging and parking impacts near the construction sites, including on the North Seattle College campus on the west side and NE 100th St (at 1st Ave NE) on the east side