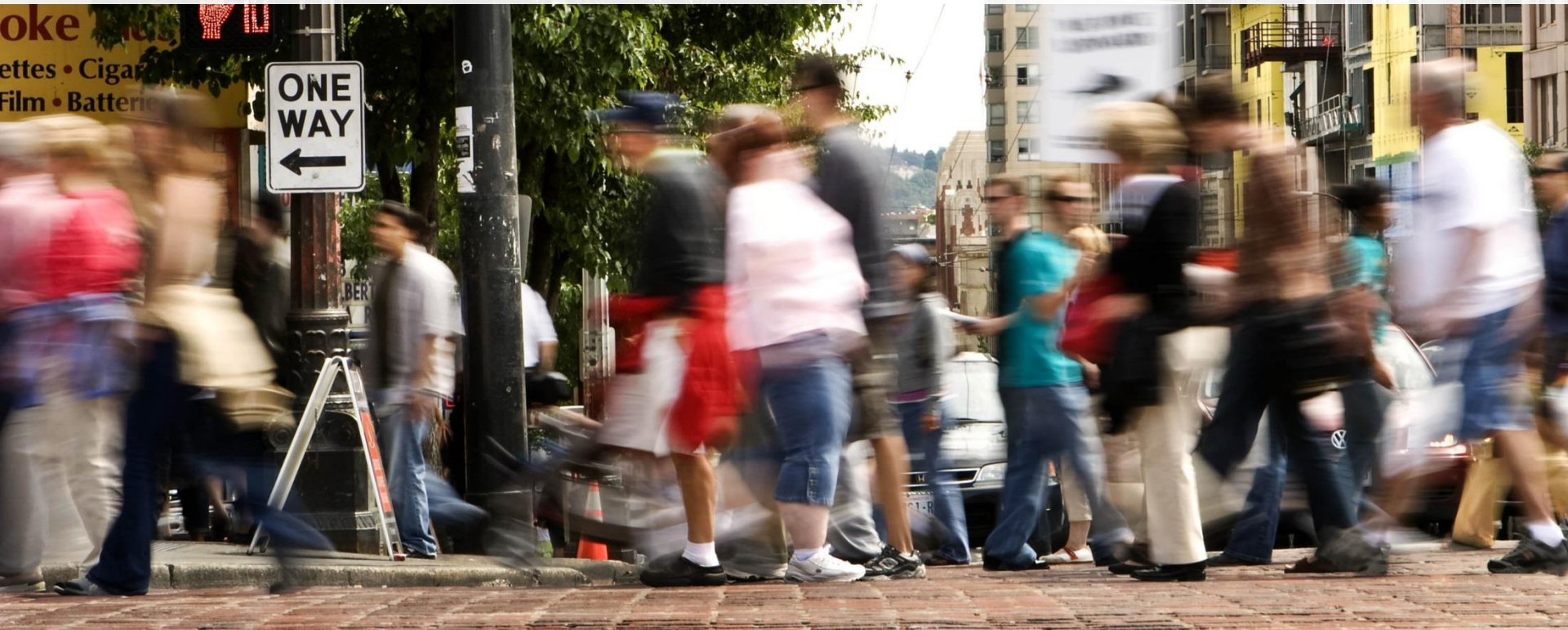




# Pedestrian Master Plan Technical Update



Seattle Pedestrian Advisory Board

Michelle Marx

March 11, 2015



# SDOT's mission & vision

Mission: delivering a first-rate transportation system for Seattle.



Vision: a vibrant Seattle with connected people, places, and products.

# SDOT's core principles



# Overview

- Final project scope
- Project schedule (and key points for SPAB involvement)
- Summary of Project Kickoff
- How SDOT uses the PMP
- SPAB desired project outcomes ?
- Validate plan mission, goals
- Refresher on current prioritization methodology



# PMP scope of work:

Task 2: Project kick-off

Task 3: Assess progress made to-date

Task 4: Best practices and evaluation report

Task 5: Update Plan data and prioritization analysis

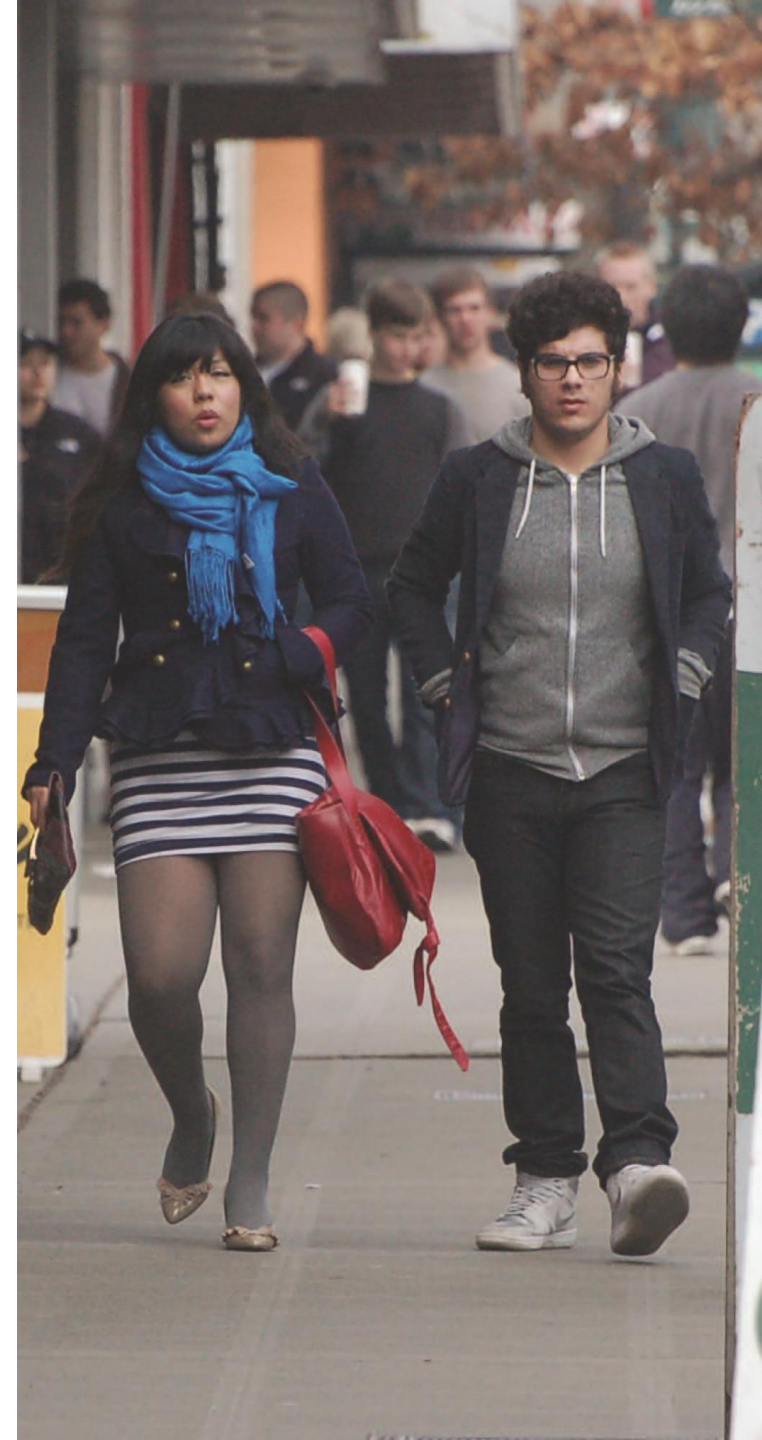
Task 6: Update toolbox

Task 7: Establish performance targets

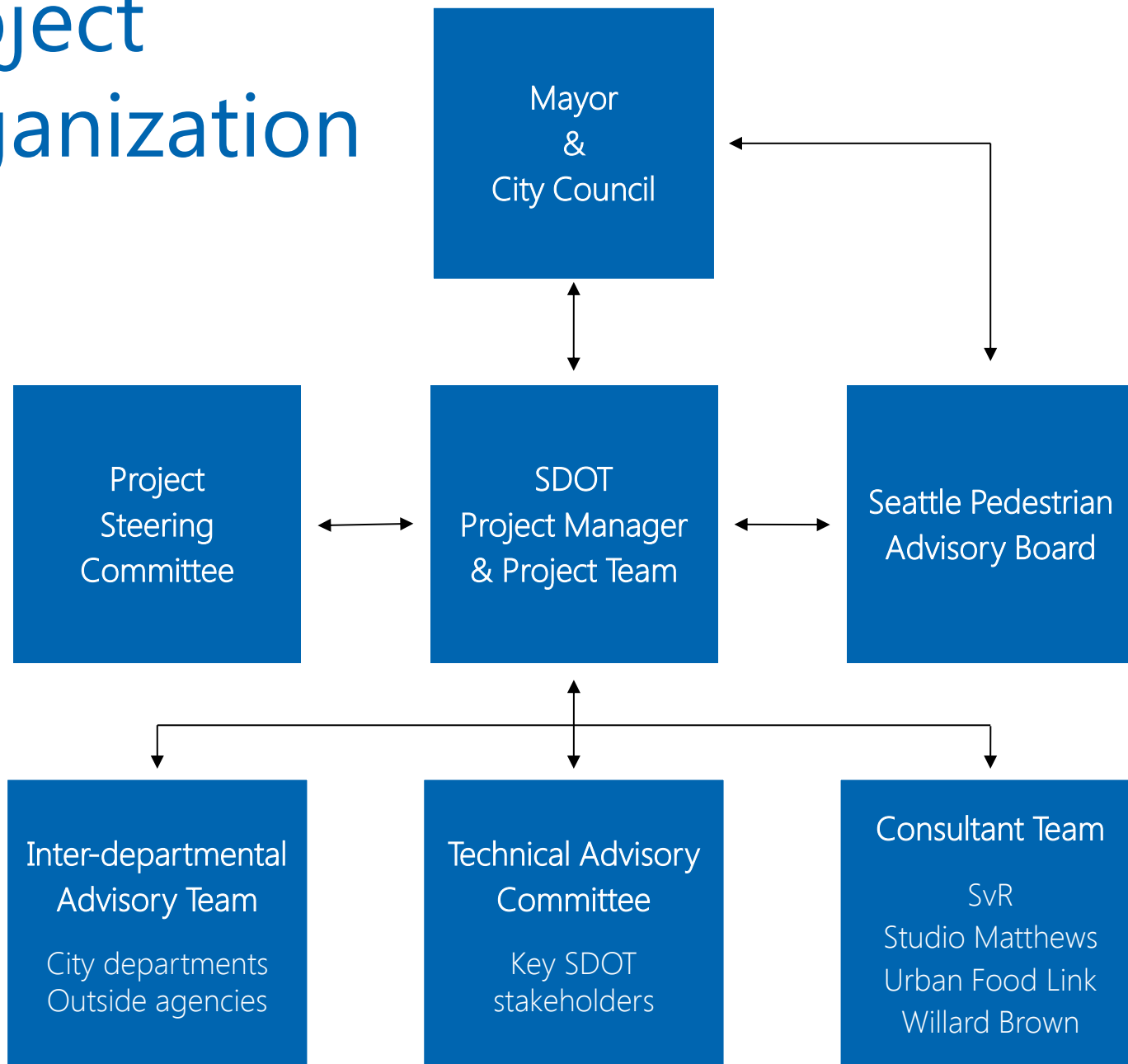
Task 8: 2-5 year Implementation Plan

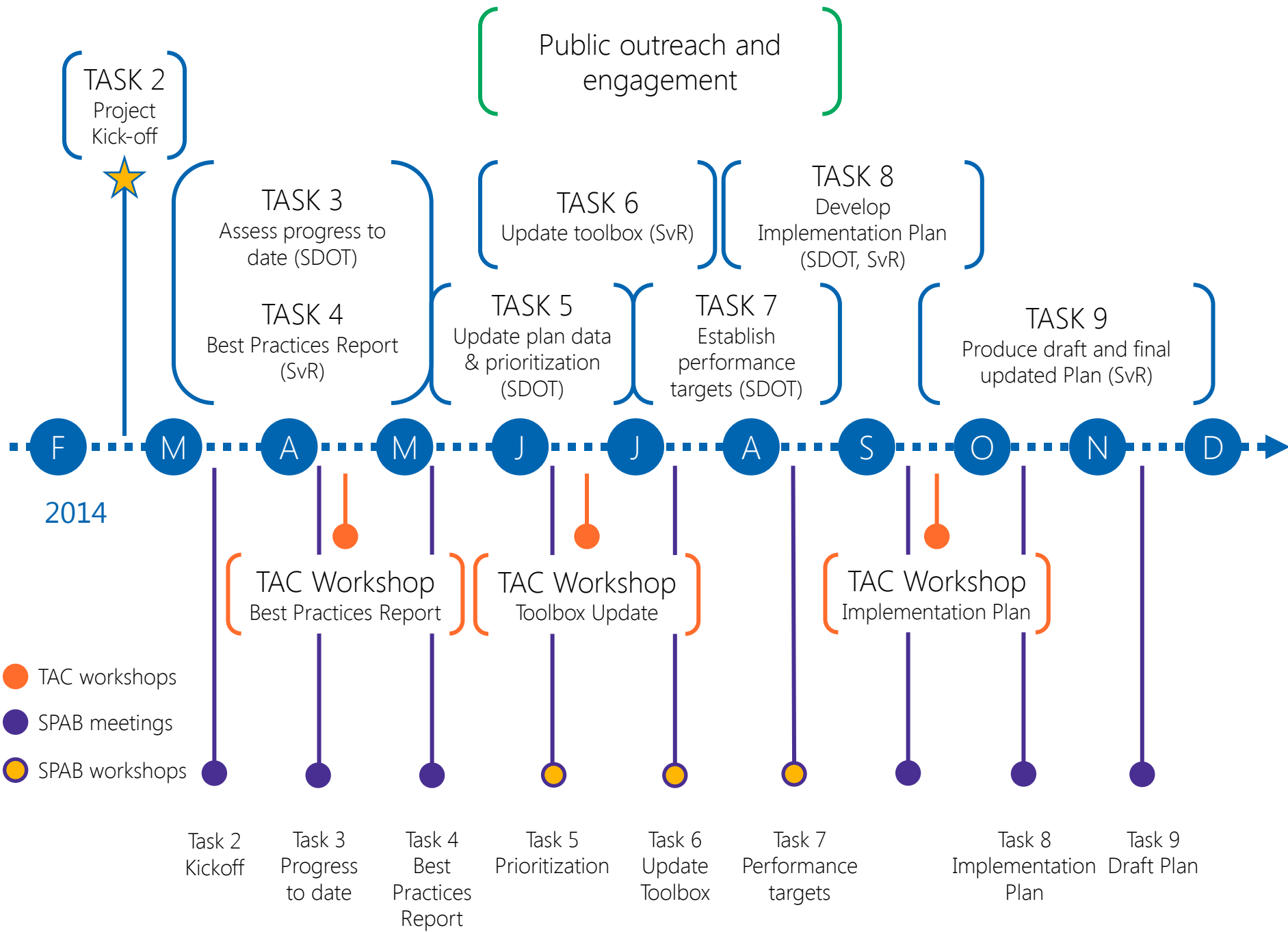
Task 9: Produce printed Plan document

Task 10: Public Outreach



# Project organization





# Project Kickoff: TAC desired project outcomes:

- Prioritize providing and maintaining sidewalks on arterials
- Strong focus on transit
- Better explain our project prioritization process to the public, and how one's neighborhood fits within the citywide vision
- More dynamic data
- More focus on maintenance and enforcement (the "little things" that impact the experience of the pedestrian realm)

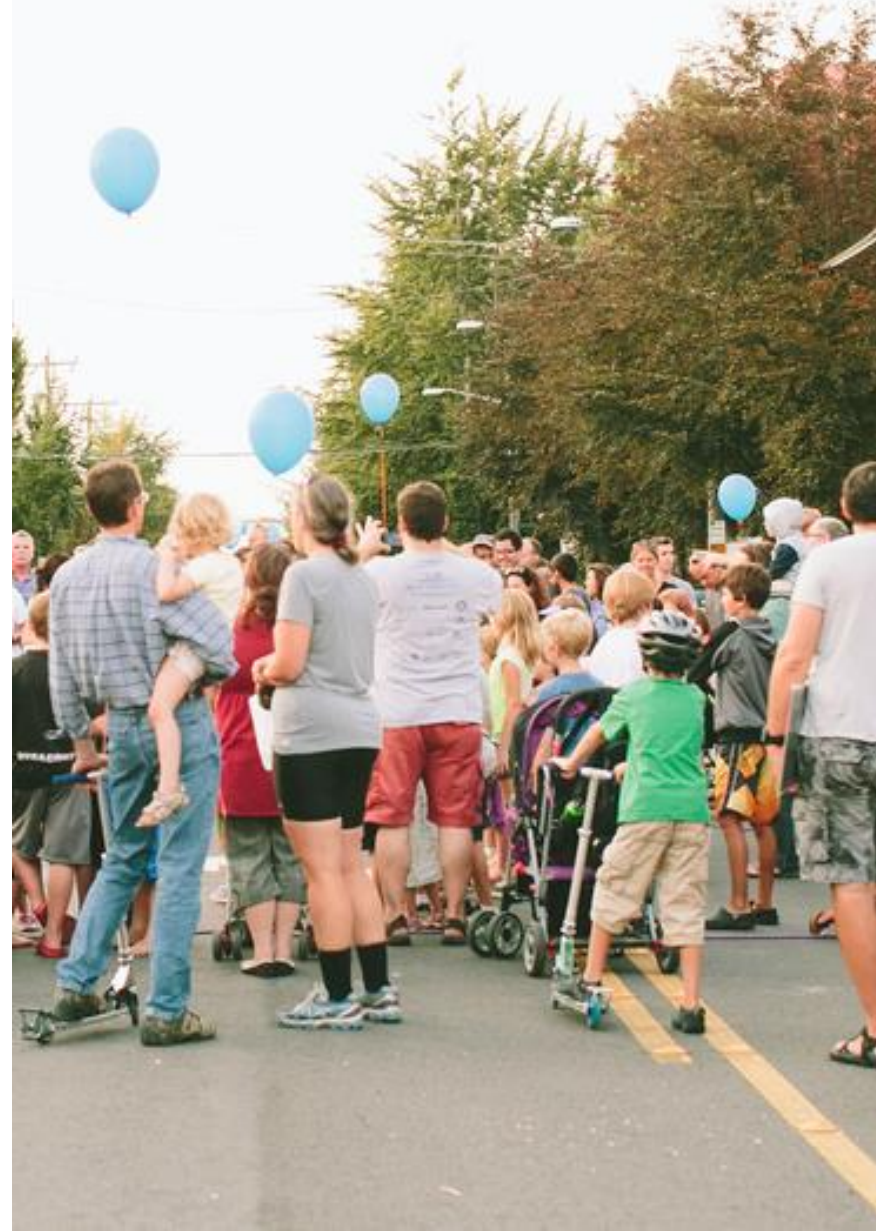




# Project Kickoff: TAC

## desired project outcomes:

- Better communicate how the PMP guides pedestrian projects/programs at SDOT
- Identify “signature” pedestrian projects
- Stronger internal policies RE project design
- Better guidance for private developers regarding pedestrian improvements
- Big projects vs. quick wins



# How SDOT uses the PMP

## Pedestrian Master Plan

### Pedestrian Programs

#### PMP IMPLEMENTATION:

- Sidewalk Development Program
- Crossing Improvements
- Sidewalk Accessibility Program (ADA)

Vision Zero

Safe Routes to School

### Capital Projects

#### MOVE SEATTLE:

PMP priorities included within projected scope and cost estimates of Move Seattle projects.

#### COMPLETE STREETS:

All SDOT capital projects evaluated against PMP as part of Complete Streets review; PMP recommendations folded into larger project scopes, as possible.

### Education/Encouragement Programs

- Be Super Safe
- Pedestrian Safety for Seniors
- Walking maps/guide
- Holiday safety campaign
- NavSeattle
- Commute Trip Reduction

### Maintenance Activities

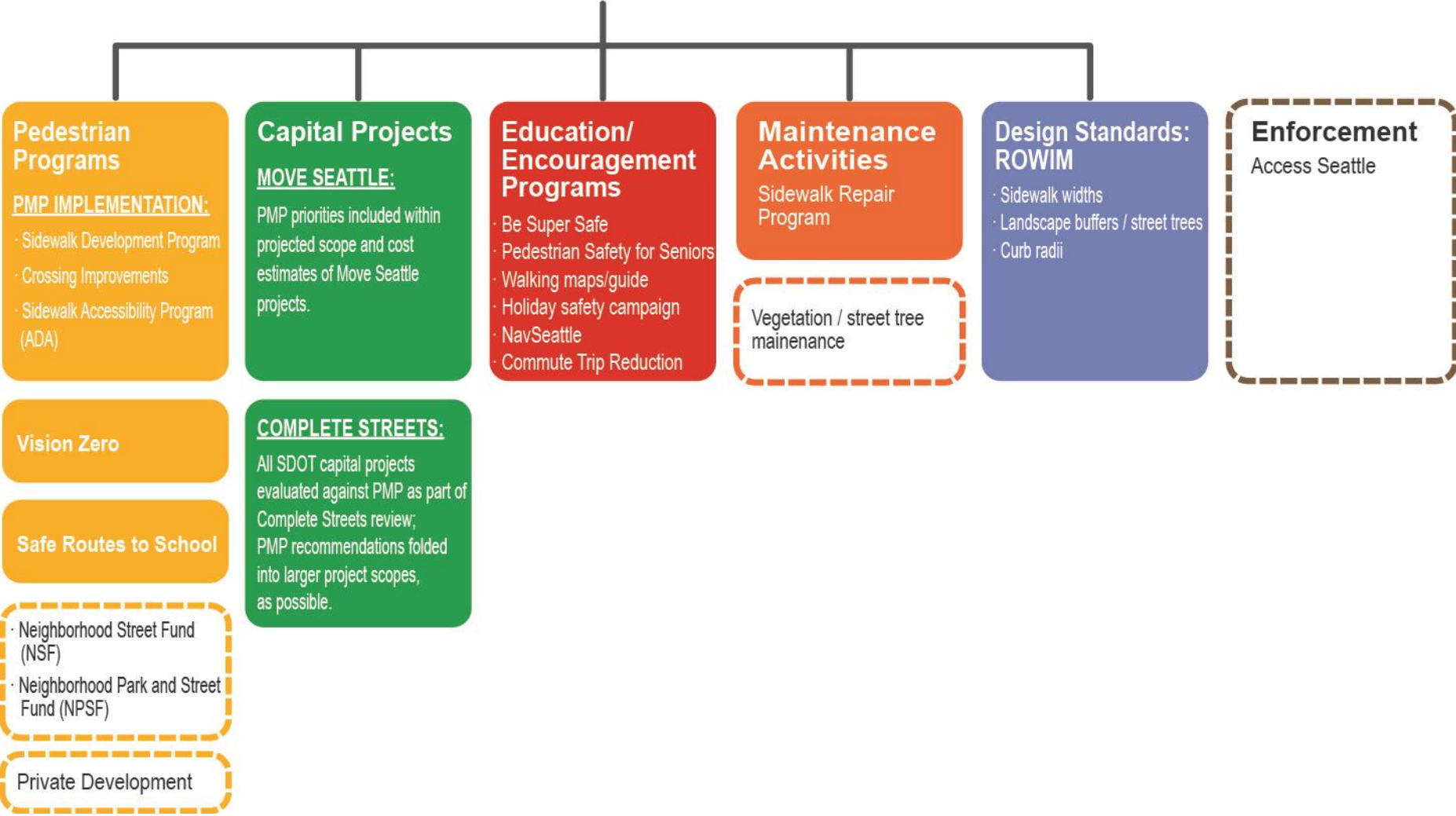
Sidewalk Repair Program

### Design Standards: ROWIM

- Sidewalk widths
- Landscape buffers / street trees
- Curb radii

# How SDOT uses the PMP

## Pedestrian Master Plan





What would you define as a successful update?



# Questions?

michelle.marx@seattle.gov

[http://www.seattle.gov/transportation/pedestrian\\_masterplan](http://www.seattle.gov/transportation/pedestrian_masterplan)

<http://www.seattle.gov/transportation>

