



Seattle Police Department

SEA STAT

August 5, 2015



PRINCIPLES OF SEASTAT

1. **Accurate and Timely Information**

Know what is happening

2. **Effective Tactics**

Have a plan

3. **Rapid Deployment**

Do it quickly

4. **Relentless Follow-Up and Assessment**

If it works, do more. If not, do something else

FORMULATING CRIME REDUCTION STRATEGIES

Focus on...

- *Problem Locations*
- *Prolific Offenders*
- *Repeat and Vulnerable Victims*



CITYWIDE MAJOR CRIME

28 Day & Year to Date (YTD) Detail

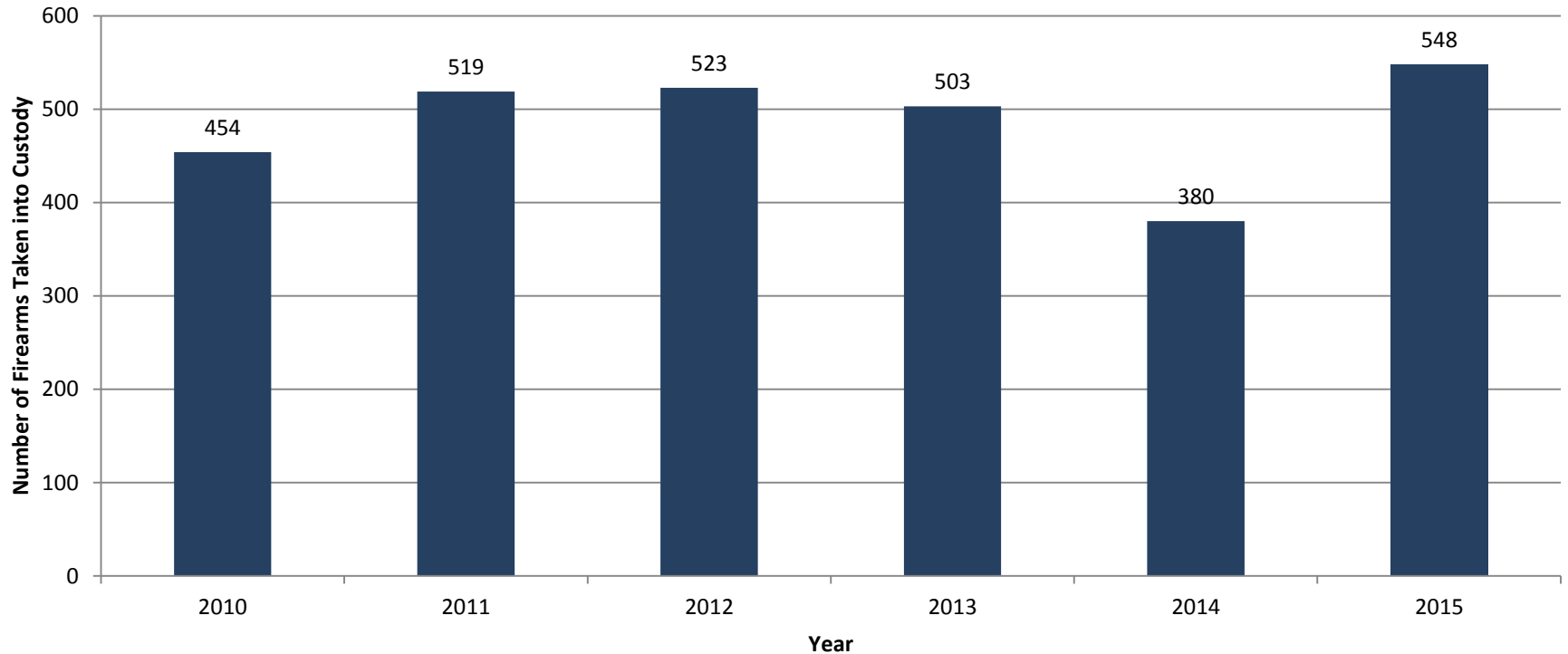
Crime Category	WEEK 1 07/05 - 07/11	WEEK 2 07/12 - 07/18	WEEK 3 07/19 - 07/25	WEEK 4 07/26 - 08/01	28 DAY Total	YTD 08/01 2014	YTD 08/01 2015	YTD Amount Change	YTD % Change
Homicide	1	0	1	2	4	14	14	0	+0%
Rape	2	4	5	1	12	68	59	-9	-13%
Robbery	31	27	29	36	123	879	922	43	+5%
DV Assault - Aggravated	8	14	8	11	41	394	335	-59	-15%
Assault-Aggravated (Excludes DV)	32	35	40	27	134	751	842	91	+12%
Person Crime TOTAL	74	80	83	77	314	2,106	2,172	66	+3%
Burglary - Residential	77	90	107	82	356	2,982	3,053	71	+2%
Burglary - Non-Residential	39	42	42	30	153	1,098	1,135	37	+3%
Larceny-Theft	241	213	202	159	815	7,281	7,119	-162	-2%
Carprowl/Theft-Auto Accessories-Auto Parts-License Plate	216	236	241	187	880	9,206	7,241	-1,965	-21%
Motor Vehicle Theft	56	51	54	71	232	3,407	2,216	-1,191	-35%
Property Crime TOTAL	629	632	646	529	2,436	23,974	20,764	-3,210	-13%
GRAND TOTAL	703	712	729	606	2,750	26,080	22,936	-3,144	-12%

Data derived from SPD Operations Dashboard on 8/4/15.

FIREARMS TAKEN INTO CUSTODY

Firearms Taken into Custody by Year January 1 to July 31 (2010-2015)

Firearms taken into custody include: civilian turn-ins; surrenders; found property; and criminal investigations.

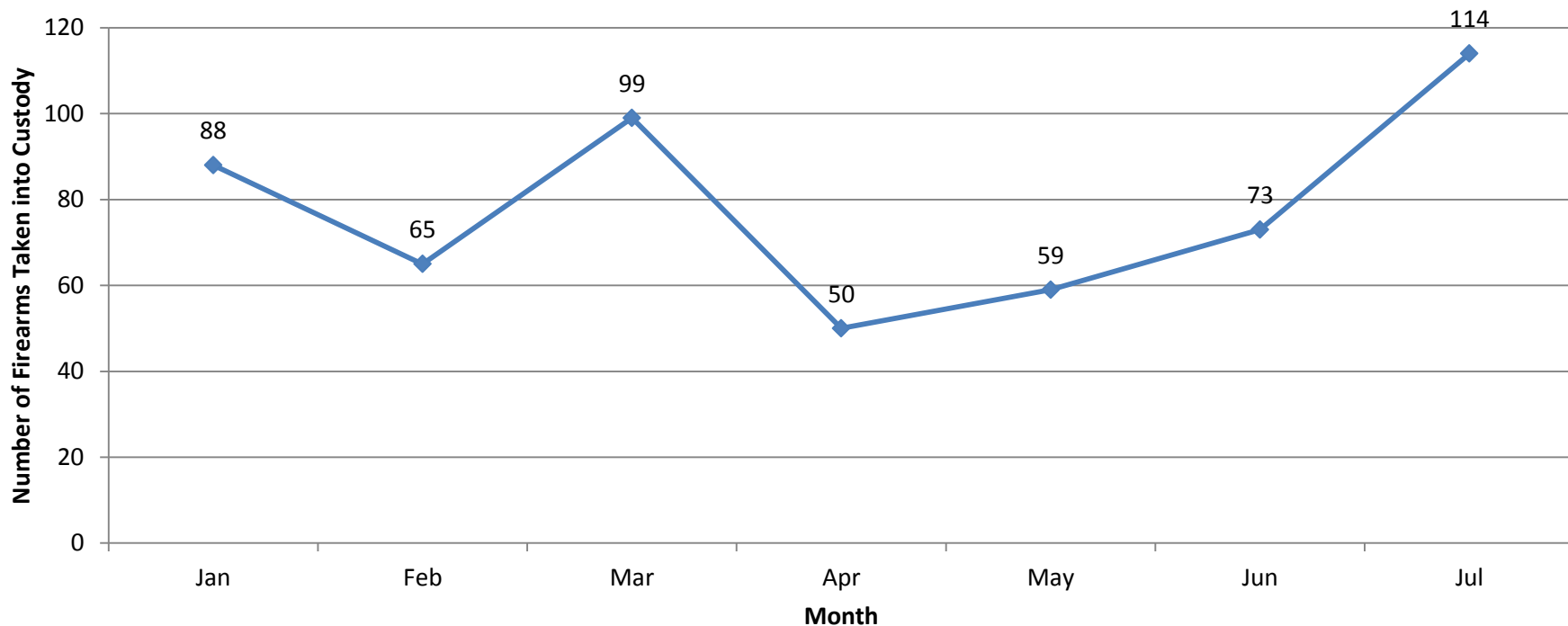


FIREARMS TAKEN INTO CUSTODY

Firearms Taken into Custody by Month

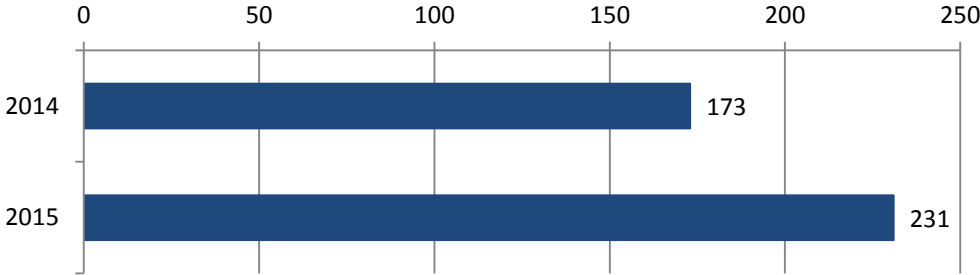
January 1 to July 31, 2015

Firearms taken into custody include: civilian turn-ins; surrenders; found property; and criminal investigations.

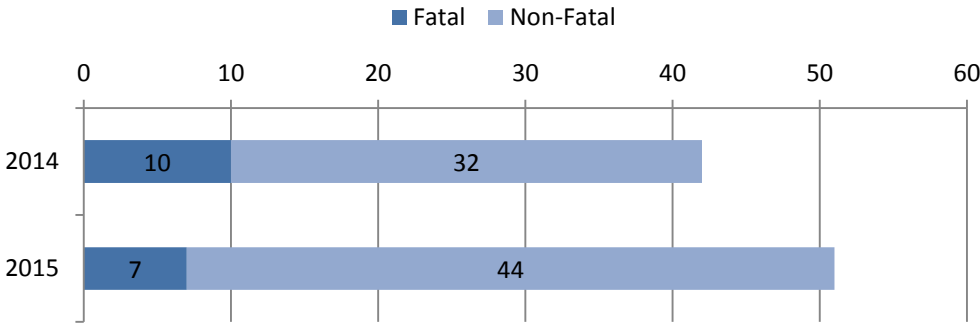


SHOTS FIRED/SHOOTINGS

Shots Fired Year-to-Date
January 1 to August 3 (2014 and 2015)



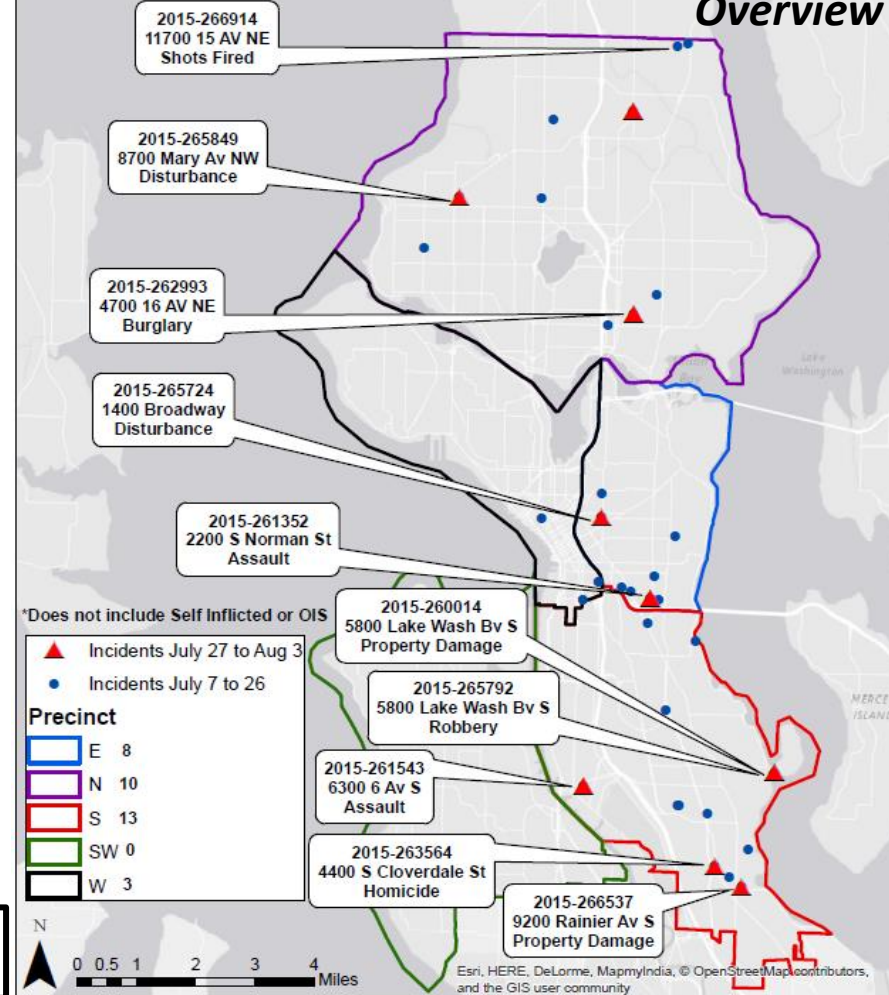
Shootings by Injury Type
January 1 to August 3 (2014 and 2015)



Crime Gun Task Force
NIBIN/IBIS Hits YTD 2015: 120

Shots Fired July 7, 2015 to August 3, 2015
(34 GOs citywide*)

28 Day Overview



PRECINCT UPDATES

West



WEST PRECINCT MAJOR CRIME

28 Day & Year to Date (YTD) Detail WEST

Crime Category	WEEK 1 07/05 - 07/11	WEEK 2 07/12 - 07/18	WEEK 3 07/19 - 07/25	WEEK 4 07/26 - 08/01	28 DAY Total	YTD 08/01 2014	YTD 08/01 2015	YTD Amount Change	YTD % Change
Homicide	0	0	1	0	1	5	4	-1	-20%
Rape	0	2	1	0	3	17	11	-6	-35%
Robbery	6	7	7	10	30	269	260	-9	-3%
DV Assault - Aggravated	2	3	1	2	8	58	50	-8	-14%
Assault-Aggravated (Excludes DV)	5	7	13	9	34	236	237	1	+0%
Person Crime TOTAL	13	19	23	21	76	585	562	-23	-4%
Burglary - Residential	17	14	17	18	66	341	567	226	+66%
Burglary - Non-Residential	12	13	11	8	44	321	359	38	+12%
Larceny-Theft	65	57	53	46	221	2,370	2,318	-52	-2%
Carprowl/Theft-Auto Accessories-Auto Parts-License Plate	81	74	94	70	319	2,711	2,255	-456	-17%
Motor Vehicle Theft	6	7	10	10	33	497	294	-203	-41%
Property Crime TOTAL	181	165	185	152	683	6,240	5,793	-447	-7%
GRAND TOTAL	194	184	208	173	759	6,825	6,355	-470	-7%

Data derived from SPD Operations Dashboard on 8/4/15.

WEST PRECINCT

Residential Burglary: Secure Parking

Date Range

July 3 through July 26, 2015.

Number of Incidents 12

Repeat Days

Saturdays; Mondays

Suspect Description

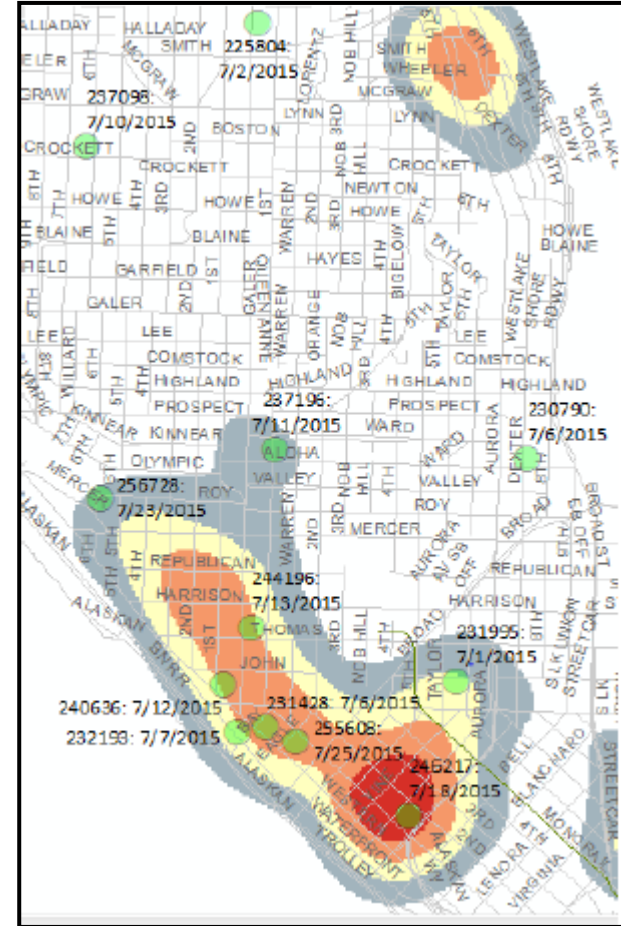
W/M/22-29

5'-08"; 175 lbs; Long Hair;

Cast Right Leg

MO: Enters Private Garages; Cuts into Bicycle Cages or takes unsecured bicycles

Evidence: Latent Prints and Video collected



WEST PRECINCT

Pioneer Square Calls for Service Focus

Date Range

Past 180 days from July 27, 2015.

Number of Incidents

2892

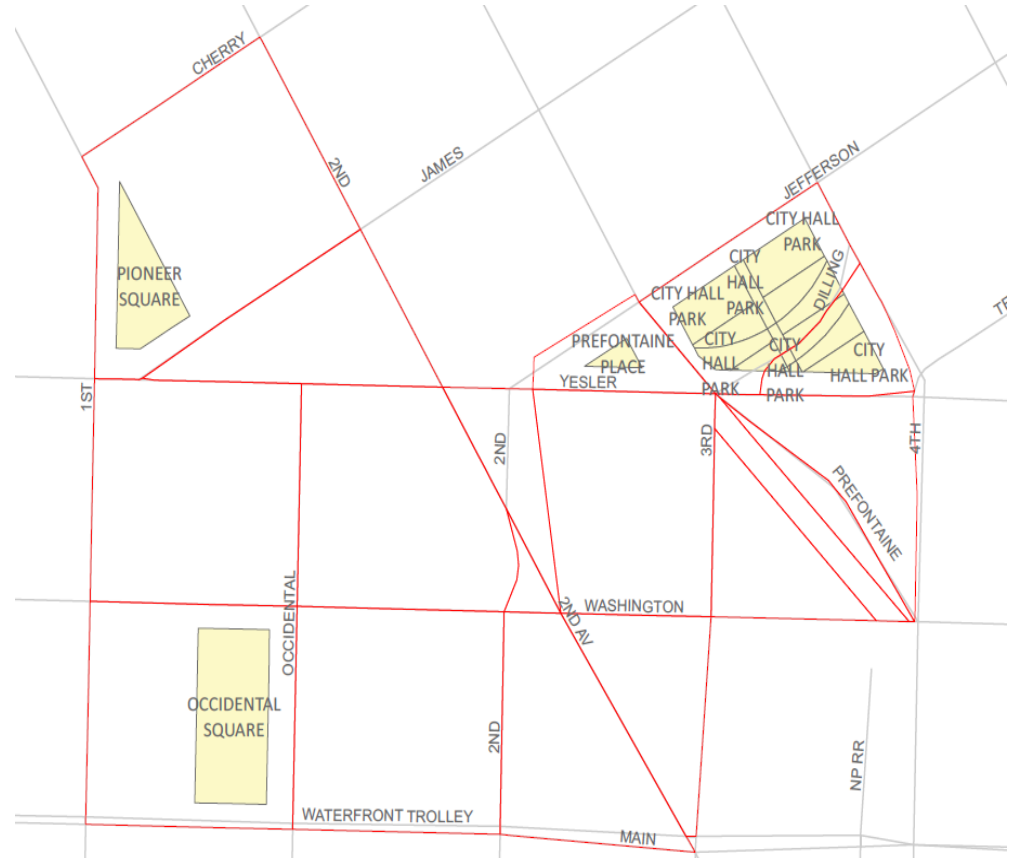
Top Call for Service

Detox	47% (1358)
Narcotics Complaints	10% (289)
Disturbances	6%
Assaults	3%

REPEAT LOCATIONS

3XX 2 Ave Ext. S.	50%
4XX 2 Ave Ext. S.	3%
4XX 2 Ave Ext. S.	3%
4XX 2 Ave Ext. S.	2%

Time of Day: 1400 - 0300

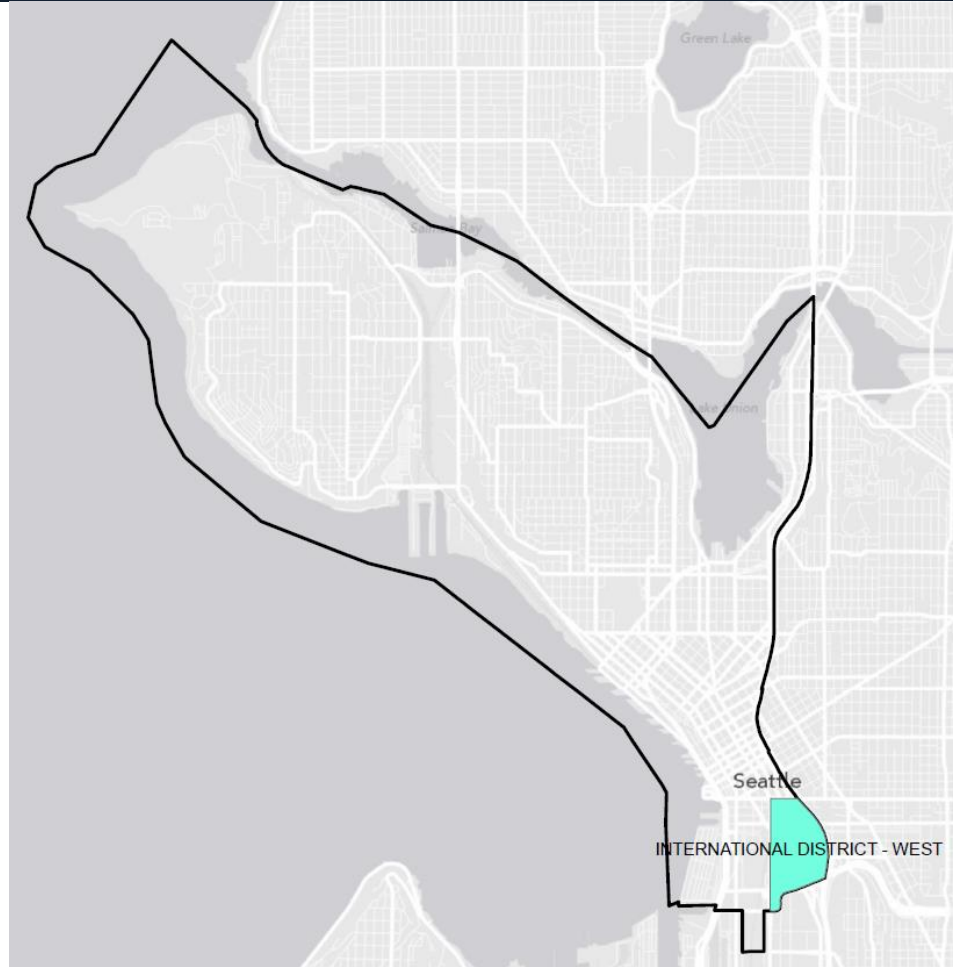


WEST PRECINCT MCPP

International District

Priorities

1. Narcotics – Public Sales and use
2. Homeless Camps
3. Street Disorder – Civility issues



PRECINCT UPDATES

South



SOUTH PRECINCT MAJOR CRIME

28 Day & Year to Date (YTD) Detail SOUTH

Crime Category	WEEK 1 07/05 - 07/11	WEEK 2 07/12 - 07/18	WEEK 3 07/19 - 07/25	WEEK 4 07/26 - 08/01	28 DAY Total	YTD 08/01 2014	YTD 08/01 2015	YTD Amount Change	YTD % Change
Homicide	0	0	0	1	1	1	3	2	+200%
Rape	1	1	0	0	2	9	7	-2	-22%
Robbery	7	3	5	6	21	224	177	-47	-21%
DV Assault - Aggravated	1	1	0	2	4	121	92	-29	-24%
Assault-Aggravated (Excludes DV)	7	7	4	3	21	140	139	-1	-1%
Person Crime TOTAL	16	12	9	12	49	495	418	-77	-16%
Burglary - Residential	8	5	12	9	34	684	464	-220	-32%
Burglary - Non-Residential	3	10	6	7	26	142	154	12	+8%
Larceny-Theft	13	16	16	14	59	798	651	-147	-18%
Carprowl/Theft-Auto Accessories-Auto Parts-License Plate	25	22	23	28	98	1,395	900	-495	-35%
Motor Vehicle Theft	8	9	10	11	38	565	431	-134	-24%
Property Crime TOTAL	57	62	67	69	255	3,584	2,600	-984	-27%
GRAND TOTAL	73	74	76	81	304	4,079	3,018	-1,061	-26%

Data derived from SPD Operations Dashboard on 8/4/15.

SOUTH PRECINCT

Non-Residential Burglary

Date Range:

May 5 though July 25, 2015

Number of Incidents: 40

Repeat Locations:

1XXXX M.L. King Way S 13

2XXX 4th Ave. S. 2

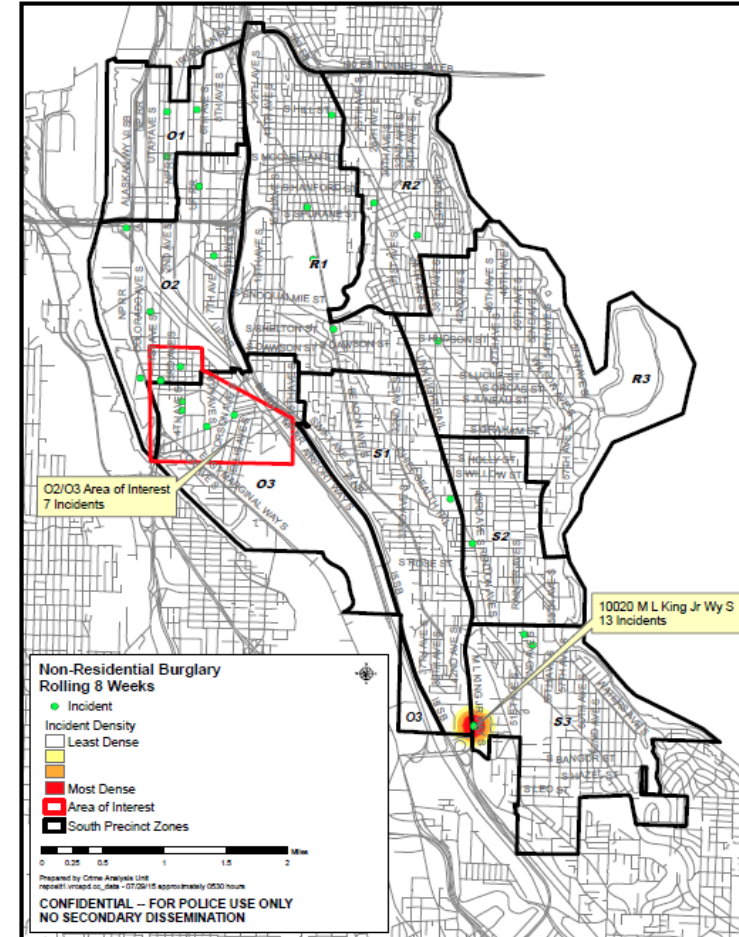
Suspect / Arrested Demographics

Arrested: 1 B/M/01-23-58

Suspects: 6 U/M

1 W/M/ 30-49

1 W/M No Age

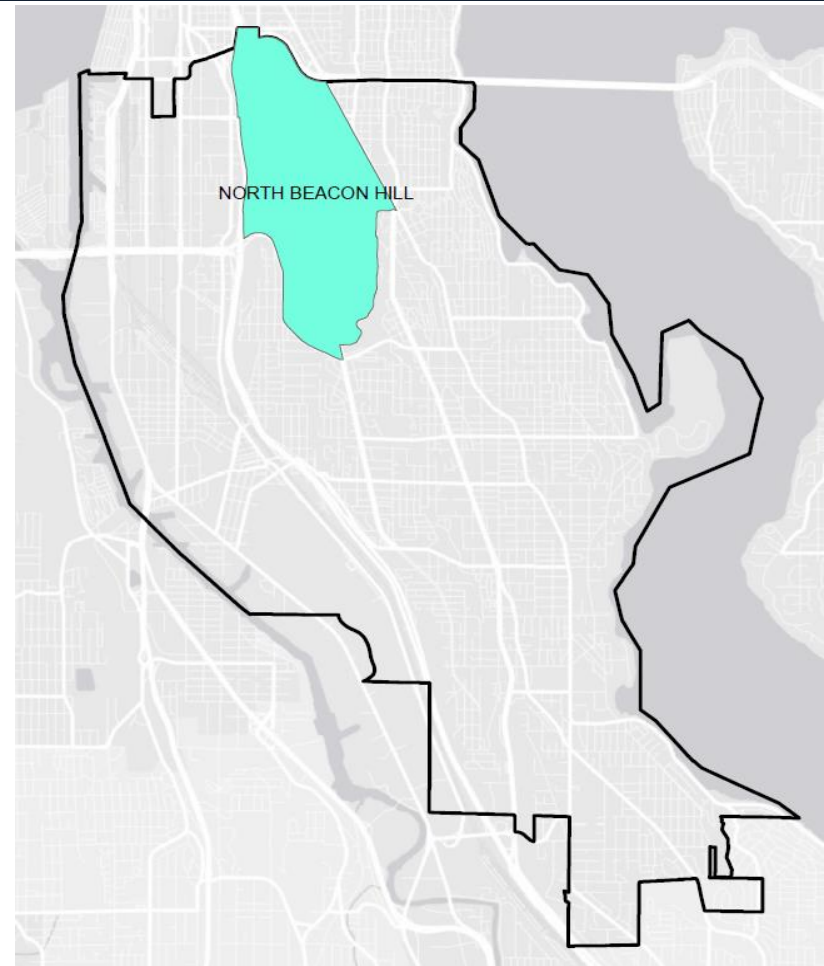


SOUTH PRECINCT MCPP

North Beacon Hill

Priorities

1. Auto Theft
2. Car Prowl
3. Public Intoxication in park areas,
on SDOT properties
4. Transient use of Beacon Library
bathrooms



PRECINCT UPDATES



Southwest



SOUTHWEST PRECINCT MAJOR CRIME

28 Day & Year to Date (YTD) Detail SW

Crime Category	WEEK 1 07/05 - 07/11	WEEK 2 07/12 - 07/18	WEEK 3 07/19 - 07/25	WEEK 4 07/26 - 08/01	28 DAY Total	YTD 08/01 2014	YTD 08/01 2015	YTD Amount Change	YTD % Change
Homicide	0	0	0	0	0	1	1	0	+0%
Rape	0	0	1	0	1	10	7	-3	-30%
Robbery	4	4	2	2	12	71	80	9	+13%
DV Assault - Aggravated	1	1	1	2	5	60	41	-19	-32%
Assault-Aggravated (Excludes DV)	3	1	3	2	9	56	62	6	+11%
Person Crime TOTAL	8	6	7	6	27	198	191	-7	-4%
Burglary - Residential	11	11	8	5	35	282	286	4	+1%
Burglary - Non-Residential	5	1	2	2	10	85	93	8	+9%
Larceny-Theft	26	12	16	12	66	578	601	23	+4%
Carprowl/Theft-Auto Accessories-Auto Parts-License Plate	11	15	12	9	47	528	526	-2	-0%
Motor Vehicle Theft	7	6	9	5	27	294	295	1	+0%
Property Crime TOTAL	60	45	47	33	185	1,767	1,801	34	+2%
GRAND TOTAL	68	51	54	39	212	1,965	1,992	27	+1%

Data derived from SPD Operations Dashboard on 8/4/15.

SOUTHWEST PRECINCT

Wanted Active Criminals

Posted: July 15, 2015

Active Area: Highland Park

Wanted Persons: 16

Updated: August 3, 2015

Arrested: 9

SOUTHWEST PRECINCT MCPP

Alki

Priorities

1. Crowd Behavior (Juvenile Drinking)
2. Unsafe Driving along Alki Ave SW
3. Parking issues along Alki

