



Seattle Police Department

# SEA STAT

April 29, 2015

# PRINCIPLES OF SEASTAT

## 1. **Accurate and Timely Information**

Know what is happening

## 2. **Effective Tactics**

Have a plan

## 3. **Rapid Deployment**

Do it quickly

## 4. **Relentless Follow-Up and Assessment**

If it works, do more. If not, do something else

# FORMULATING CRIME REDUCTION STRATEGIES

Focus on...

- *Problem Locations*
- *Prolific Offenders*
- *Repeat and Vulnerable Victims*

# SHOTS FIRED

## January 1-April 27 (YTD)

2012 YTD – 111  
 2013 YTD – 89  
 2014 YTD – 97  
 2015 YTD – 133

## March 31-April 27 (Last 28 Days)

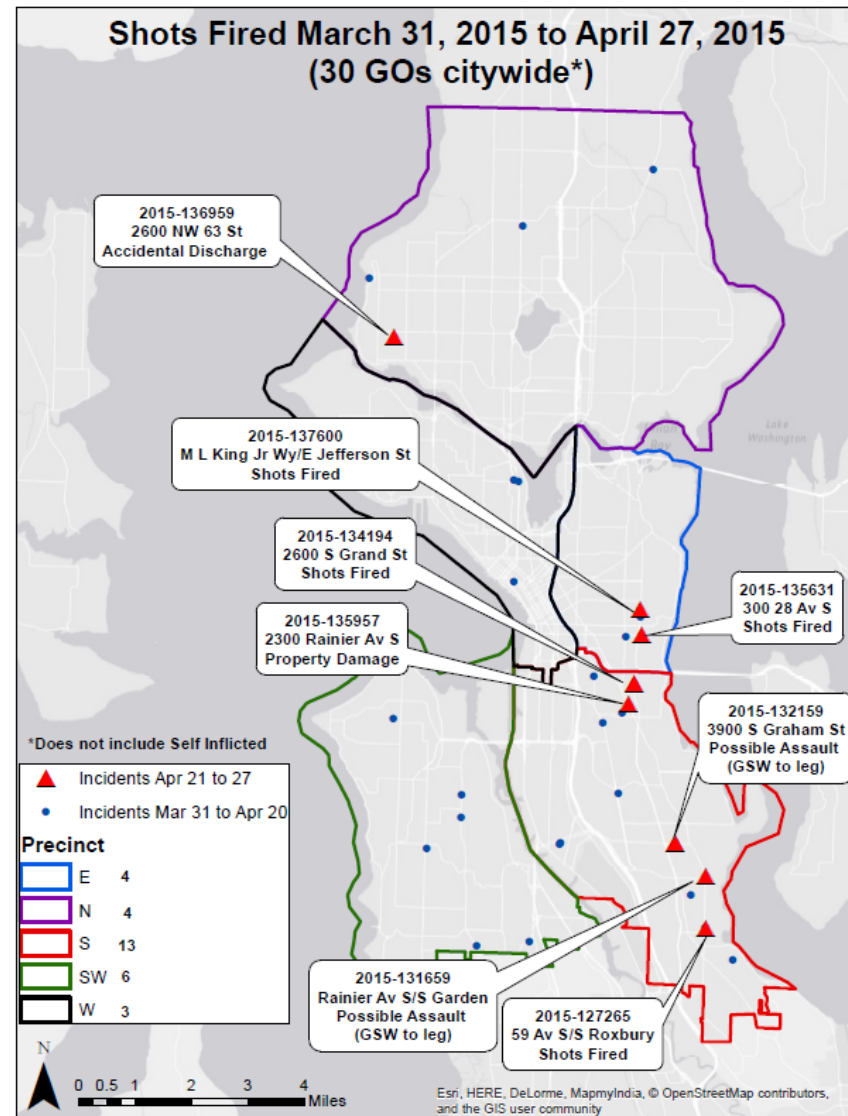
2012 – 27  
 2013 – 22  
 2014 – 25  
 2015 – 30

## Incidents with Injury or Death YTD

2014 YTD – 38 GOs with Injuries (25) or Death (13)  
 - Deaths: 3 suicides, 3 OIS, and 7 homicides  
 2015 YTD – 32 GOs with Injuries (23) or Death (9)  
 - Deaths: 7 suicides, and 2 homicides

## Gun Crime Task Force Data

- NIBIN/IBIS Hits YTD 2015: 79  
 - NIBIN/IBIS Hits that GCTF started assisting with in past 2 weeks: 3  
 - GCTF has obtained 3 Federal Arrest Warrants and 1 State Search Warrant in last 2 weeks.





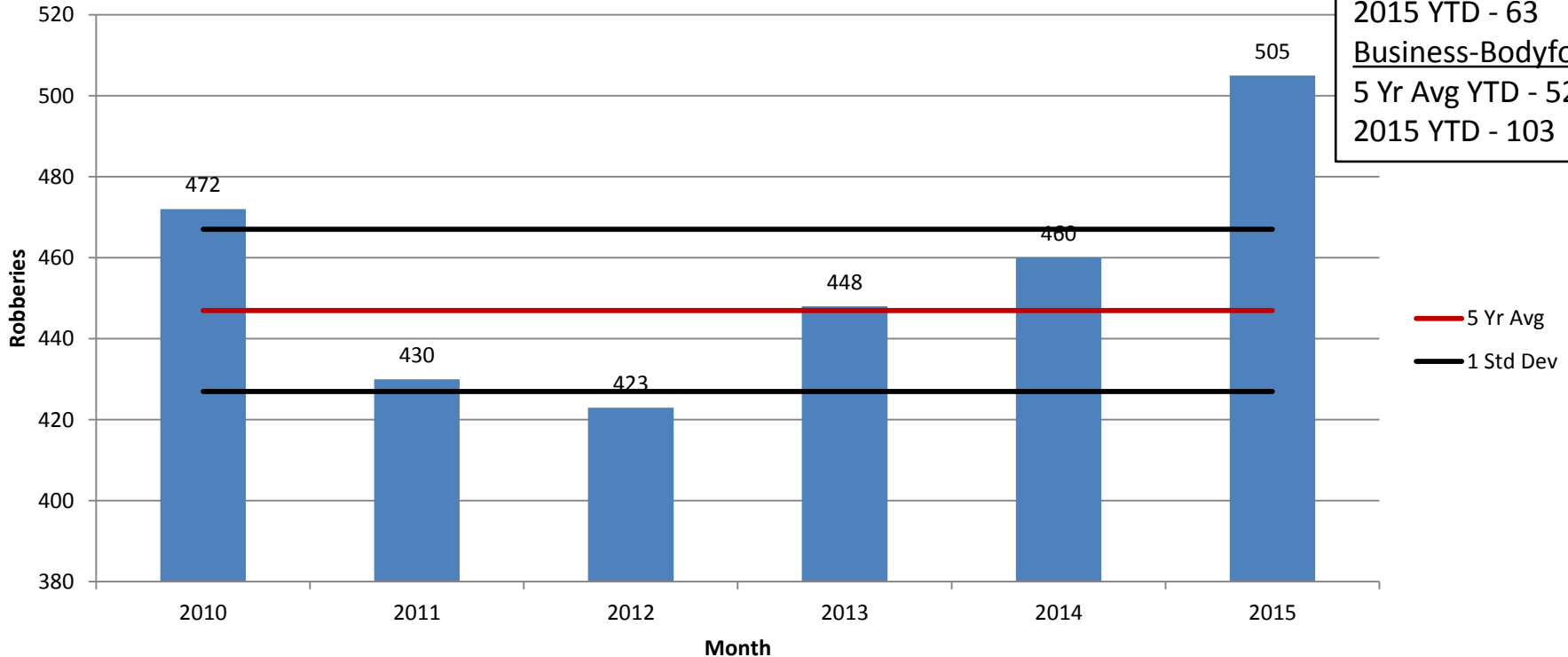
# CITYWIDE MAJOR CRIME

## 28 Day & Year to Date (YTD) Detail

Crime Category	WEEK 1 03/29 - 04/04	WEEK 2 04/05 - 04/11	WEEK 3 04/12 - 04/18	WEEK 4 04/19 - 04/25	28 DAY Total	YTD 04/25 2014	YTD 04/25 2015	YTD Amount Change	YTD % Change
Homicide	0	0	0	0	0	7	5	-2	-29%
Rape	2	4	7	6	19	36	46	10	+28%
Robbery	28	31	27	20	106	448	486	38	+8%
DV Assault - Aggravated	10	12	8	17	47	193	195	2	+1%
Assault-Aggravated (Excludes DV)	21	23	25	20	89	370	384	14	+4%
<b>Person Crime TOTAL</b>	<b>61</b>	<b>70</b>	<b>67</b>	<b>63</b>	<b>261</b>	<b>1,054</b>	<b>1,116</b>	<b>62</b>	<b>+6%</b>
Burglary - Residential	93	93	102	107	395	1,590	1,487	-103	-6%
Burglary - Non-Residential	40	35	27	29	131	572	575	3	+1%
Larceny-Theft	230	217	218	158	823	3,692	3,727	35	+1%
Carprowl/Theft-Auto Accessories-Auto Parts-License Plate	225	219	219	213	876	4,986	3,849	-1,137	-23%
Motor Vehicle Theft	59	72	84	81	296	1,604	1,278	-326	-20%
<b>Property Crime TOTAL</b>	<b>647</b>	<b>636</b>	<b>650</b>	<b>588</b>	<b>2,521</b>	<b>12,444</b>	<b>10,916</b>	<b>-1,528</b>	<b>-12%</b>
<b>GRAND TOTAL</b>	<b>708</b>	<b>706</b>	<b>717</b>	<b>651</b>	<b>2,782</b>	<b>13,498</b>	<b>12,032</b>	<b>-1,466</b>	<b>-11%</b>

# CITYWIDE ROBBERY

**Robbery by Year**  
**January 1 - April 28 (2010-2015)**



## Category Increases

### Street-Gun:

5 Yr Avg YTD - 49

2015 YTD - 63

### Business-Bodyforce:

5 Yr Avg YTD - 52

2015 YTD - 103

# PRECINCT UPDATES

## North



# NORTH PRECINCT MAJOR CRIME

## 28 Day & Year to Date (YTD) Detail NORTH

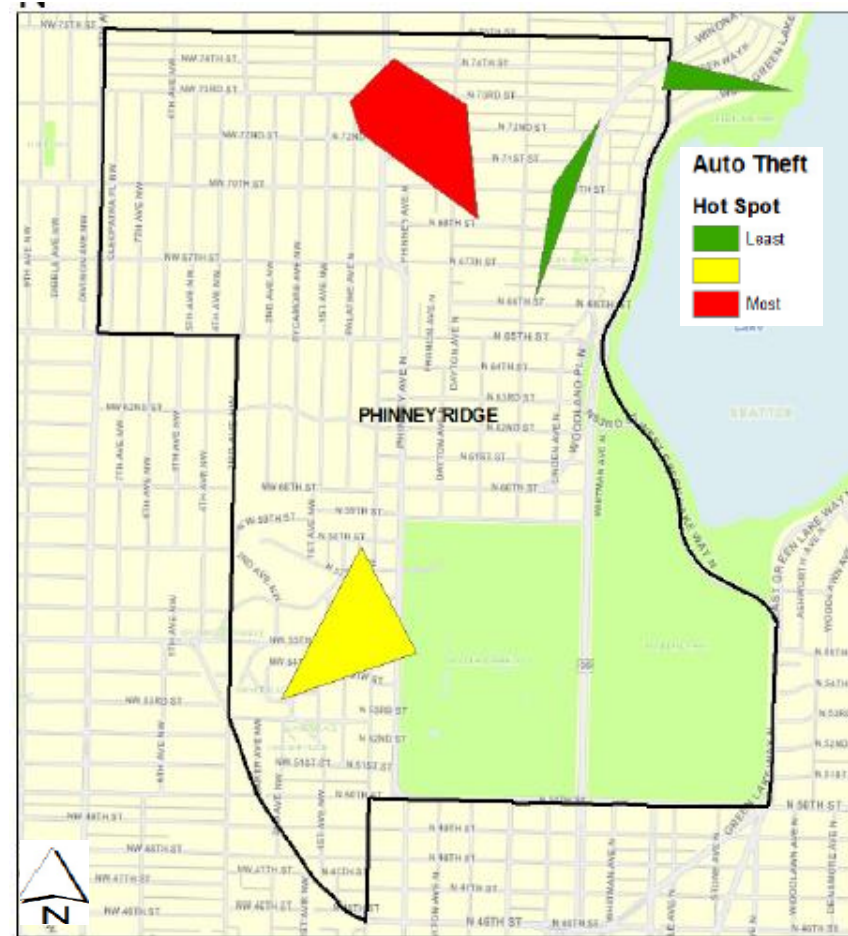
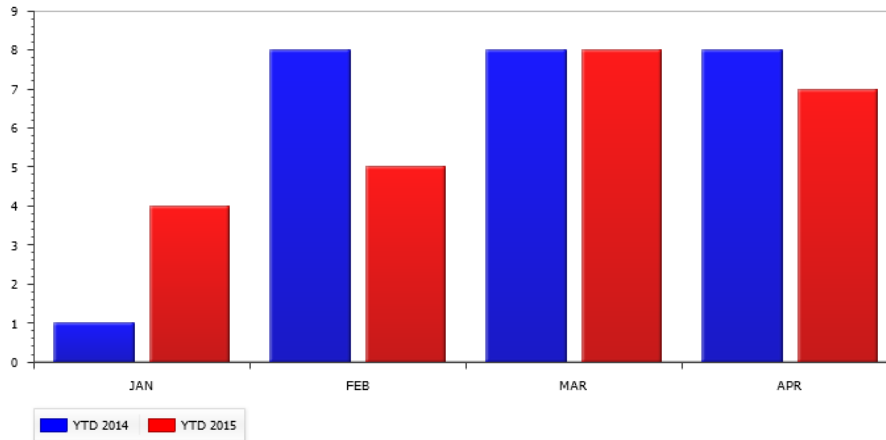
Crime Category	WEEK 1 03/29 - 04/04	WEEK 2 04/05 - 04/11	WEEK 3 04/12 - 04/18	WEEK 4 04/19 - 04/25	28 DAY Total	YTD 04/25 2014	YTD 04/25 2015	YTD Amount Change	YTD % Change
Homicide	0	0	0	0	0	1	1	0	+0%
Rape	1	0	1	4	6	9	19	10	+111%
Robbery	6	9	3	8	26	85	123	38	+45%
DV Assault - Aggravated	3	5	1	3	12	42	48	6	+14%
Assault-Aggravated (Excludes DV)	5	6	5	6	22	79	101	22	+28%
<b>Person Crime TOTAL</b>	<b>15</b>	<b>20</b>	<b>10</b>	<b>21</b>	<b>66</b>	<b>216</b>	<b>292</b>	<b>76</b>	<b>+35%</b>
Burglary - Residential	47	38	40	34	159	631	552	-79	-13%
Burglary - Non-Residential	15	18	9	11	53	209	197	-12	-6%
Larceny-Theft	92	87	77	59	315	1,213	1,303	90	+7%
Carprowl/Theft-Auto Accessories-Auto Parts-License Plate	73	70	77	62	282	1,494	1,069	-425	-28%
Motor Vehicle Theft	25	25	31	41	122	683	529	-154	-23%
<b>Property Crime TOTAL</b>	<b>252</b>	<b>238</b>	<b>234</b>	<b>207</b>	<b>931</b>	<b>4,230</b>	<b>3,650</b>	<b>-580</b>	<b>-14%</b>
<b>GRAND TOTAL</b>	<b>267</b>	<b>258</b>	<b>244</b>	<b>228</b>	<b>997</b>	<b>4,446</b>	<b>3,942</b>	<b>-504</b>	<b>-11%</b>



# NORTH PRECINCT

## Phinney Ridge Increasing Auto Thefts

- 24 Stolen year to date
- 7 Stolen in the last 28 days
- 0000-0400 Most Common Hours
- Repeat Locations
  - 7200 block Palentine Av N
  - 5800-7300 blocks Greenwood Av N



# PRECINCT UPDATES

**East**



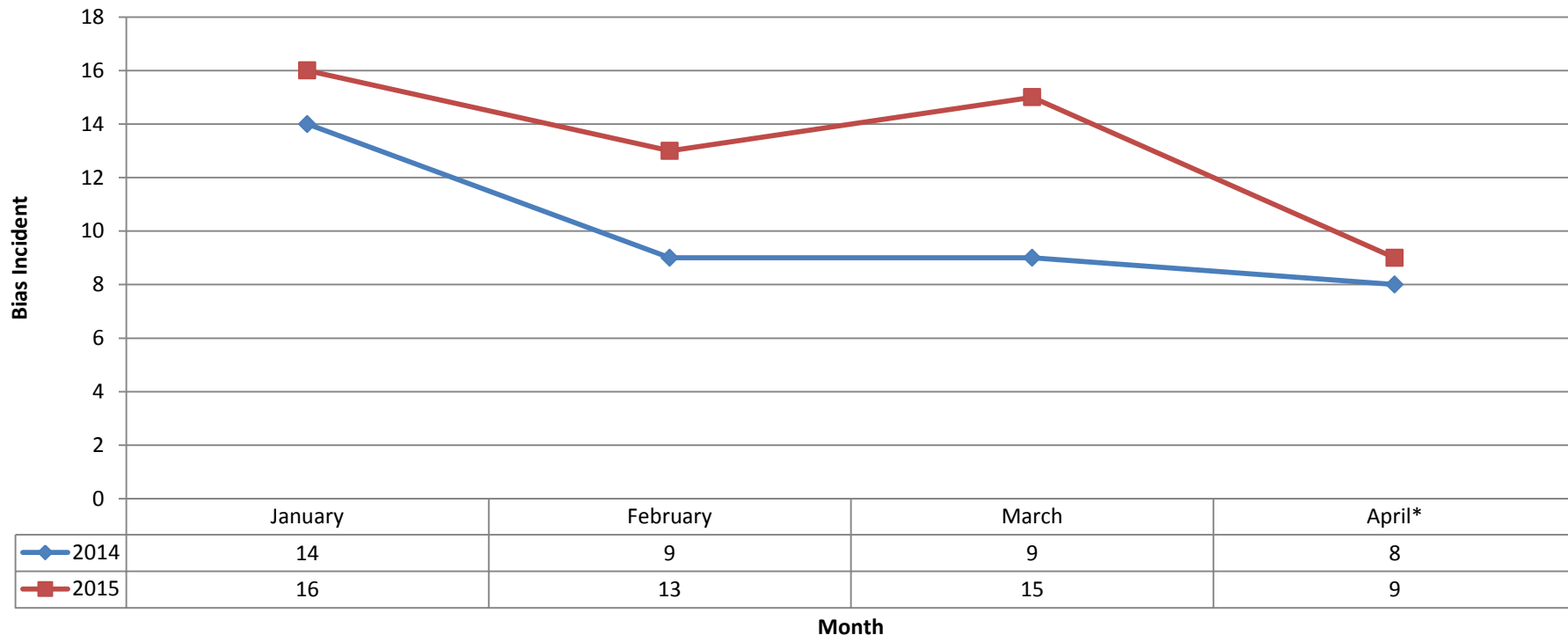
# EAST PRECINCT MAJOR CRIME

## 28 Day & Year to Date (YTD) Detail EAST

Crime Category	WEEK 1 03/29 - 04/04	WEEK 2 04/05 - 04/11	WEEK 3 04/12 - 04/18	WEEK 4 04/19 - 04/25	28 DAY Total	YTD 04/25 2014	YTD 04/25 2015	YTD Amount Change	YTD % Change
Homicide	0	0	0	0	0	3	1	-2	-67%
Rape	0	1	2	0	3	6	6	0	+0%
Robbery	4	5	4	3	16	58	80	22	+38%
DV Assault - Aggravated	1	1	2	1	5	29	35	6	+21%
Assault-Aggravated (Excludes DV)	7	1	7	2	17	68	70	2	+3%
<b>Person Crime TOTAL</b>	<b>12</b>	<b>8</b>	<b>15</b>	<b>6</b>	<b>41</b>	<b>164</b>	<b>192</b>	<b>28</b>	<b>+17%</b>
Burglary - Residential	16	12	19	19	66	214	253	39	+18%
Burglary - Non-Residential	1	3	4	4	12	77	62	-15	-19%
Larceny-Theft	28	27	42	17	114	531	523	-8	-2%
Carprowl/Theft-Auto Accessories-Auto Parts-License Plate	53	29	35	39	156	1,058	745	-313	-30%
Motor Vehicle Theft	10	12	9	11	42	228	160	-68	-30%
<b>Property Crime TOTAL</b>	<b>108</b>	<b>83</b>	<b>109</b>	<b>90</b>	<b>390</b>	<b>2,108</b>	<b>1,743</b>	<b>-365</b>	<b>-17%</b>
<b>GRAND TOTAL</b>	<b>120</b>	<b>91</b>	<b>124</b>	<b>96</b>	<b>431</b>	<b>2,272</b>	<b>1,935</b>	<b>-337</b>	<b>-15%</b>

# BIAS INCIDENTS

## Citywide Bias Incidents January to April (2014 and 2015)



\*April 2015 data as of 4/28/15.

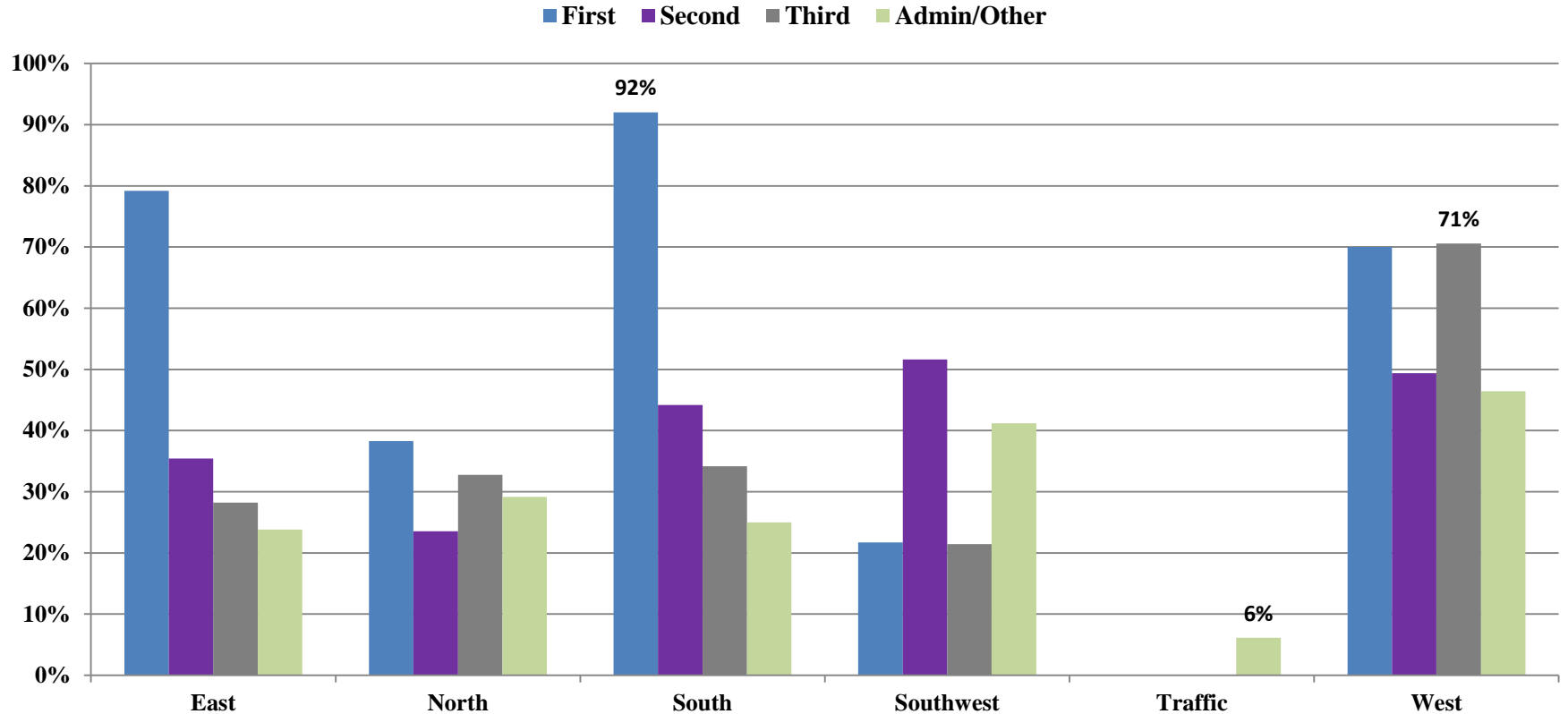
Bias Incidents include Malicious Harassment, Crime with Bias Element, and Bias Incident (Non-Criminal).

# COMPLIANCE UPDATE

## OVERVIEW

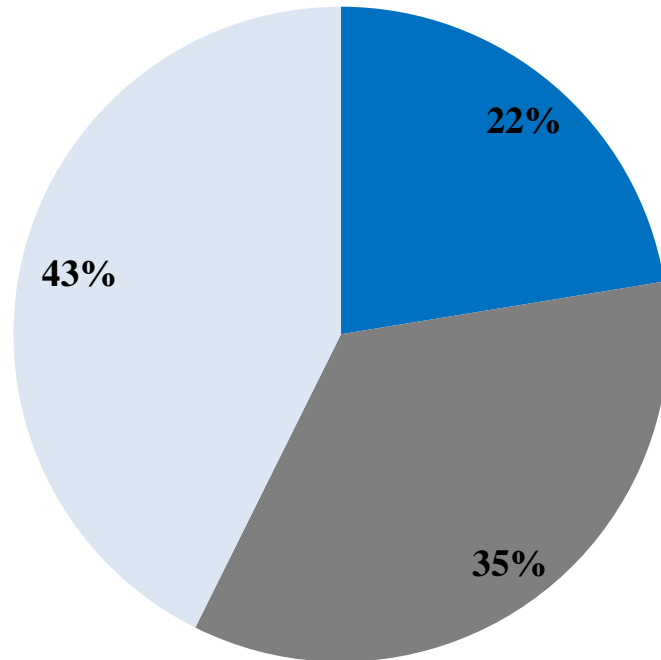
# Deployment of Crisis Intervention Certified Officers

(April 8, 2015)



# Applications of Force (April 2014 – March 2015)

■ Behavioral Crisis   ■ Alcohol / Drugs   ■ Unimpaired



# Force Involving Subjects in Behavioral Crisis

(April 2014 – March 2015)

