



Seattle Police Department

SEA / STAT

November 12, 2014

Principles of SeaStat

1. Accurate and timely information

Know what is happening

2. Effective Tactics

Have a plan

3. Rapid Deployment

Do it quickly

4. Relentless Follow-Up and Assessment

If it works, do more. If not, do something else

Formulating Crime Reduction Strategies

Focus on...

- *Problem Locations*
- *Prolific Offenders*
- *Repeat and Vulnerable Victims*

Major Crime Categories for the City of Seattle

January 1 to October 31, 2014

Crime	Jan	Feb	Mar	Apr	May	Jun	Jul	Aug	Sep	Oct	2014 Total	2013 Total	Percent Change
Homicide	1	2	0	4	1	4	2	1	3	2	20	16	-
Rape	5	6	13	9	10	6	10	15	4	10	88	76	-
Robbery	129	77	135	125	134	149	120	150	152	108	1279	1297	-1%
Aggravated Assault	158	129	145	160	188	172	174	183	200	180	1689	1464	15%
Burglary	632	507	547	566	601	593	599	607	597	604	5853	6050	-3%
Larceny-Theft	2284	1922	2311	2563	2513	2398	2290	2350	2260	2298	23189	20642	12%
Auto Theft	430	366	413	486	538	622	534	370	431	525	4715	3412	38%
Total	3639	3009	3564	3913	3985	3944	3729	3676	3647	3727	36833	32957	12%*

Crime categories are incident-based (not victim) and follow the UCR hierarchy classification rule.

Data was extracted on 11/11/14 from SPD RMS (Reposit) and excludes unfounded and non precinct-based locations.

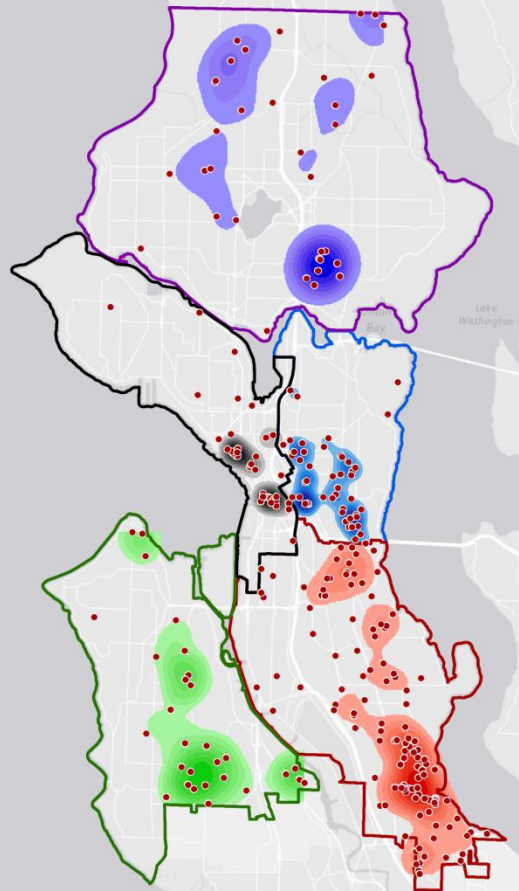
****Down 5% from the first six months of 2014***

Shots Fired GO Reports YTD 11/10/14 Shots Density by Precinct*

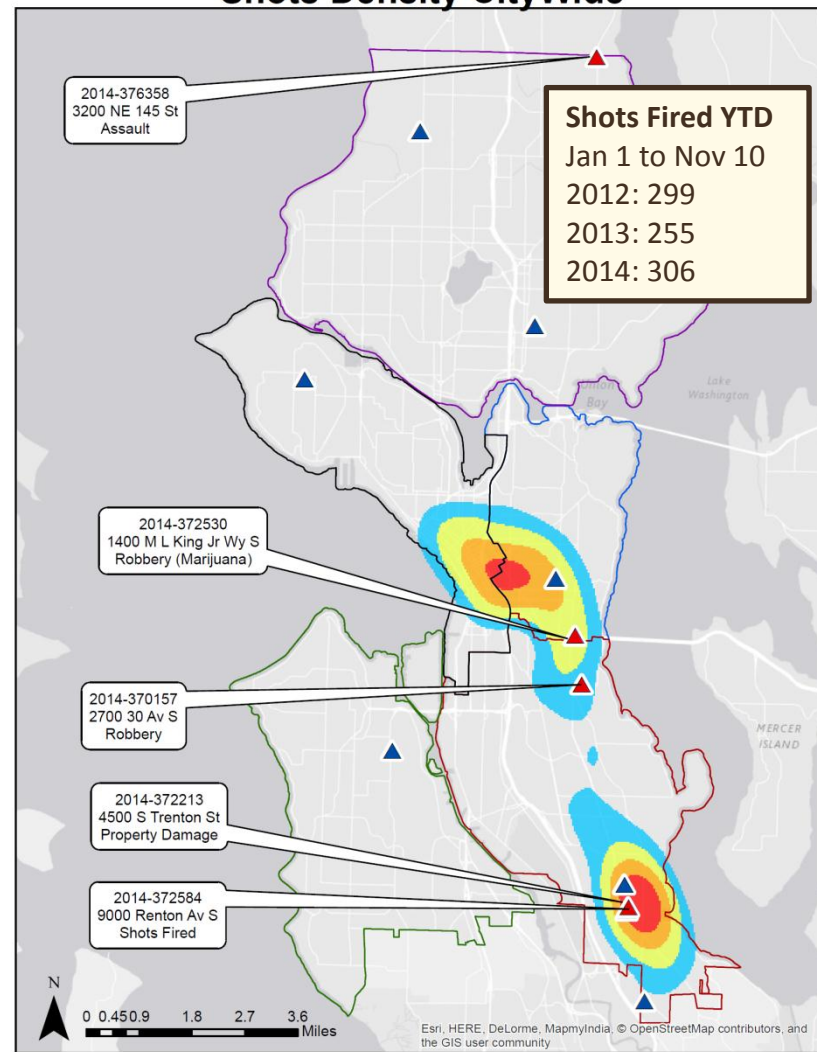
*Density is based on each precinct total, not on city wide analysis.

This map shows Shots Fired Density based on analysis of each precinct by itself. Please note that due to the analysis being done on a precinct level, even though density spots may be the same size on the map, they are looking at different sizes of data.
(Ex: South and Southwest have density spots that appear to be the same size, however Southwest only 29 incidents represented, whereas South has 121 incidents represented.)

- East Precinct
- North Precinct
- South Precinct
- Southwest Precinct
- West Precinct
- Shots Events

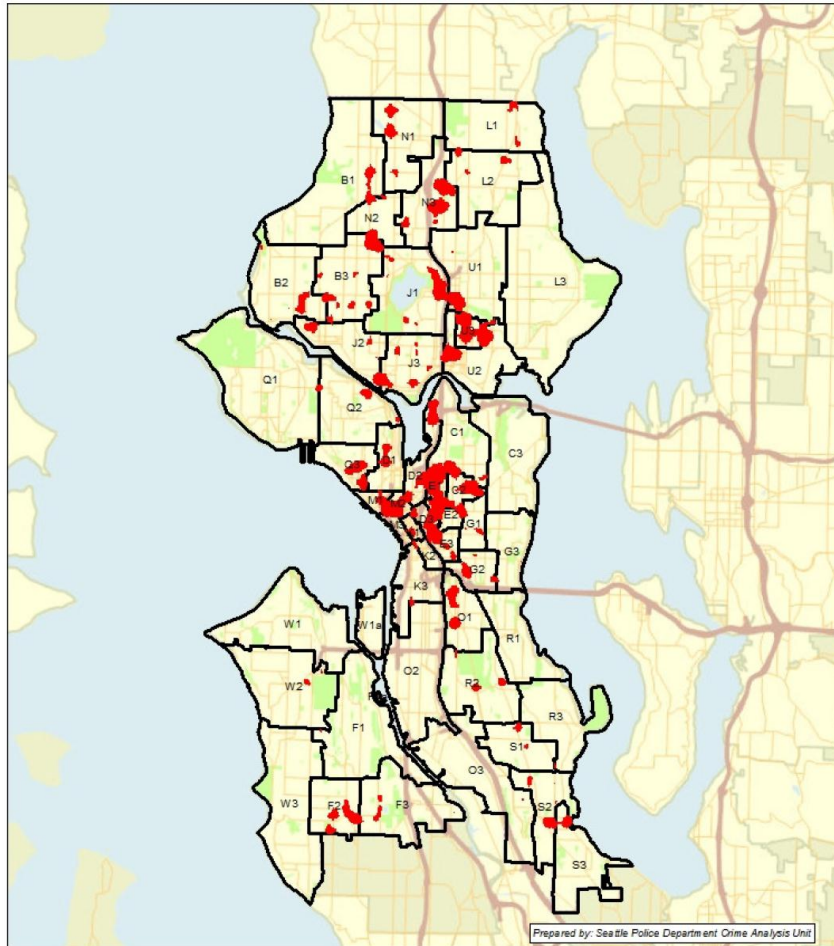


Shots Fired GO Reports 11/4 to 11/10 Shots Density CityWide



Citywide Auto Theft/Recovery Concentrations

January through October 2014



Auto Theft/Recoveries

Map identifies the areas City Wide where auto theft and vehicle recoveries are concentrated.

Identified areas account for 29% of all vehicles stole and 16% of all recovered vehicles.

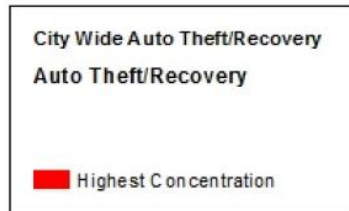
Recovery Rate:

76 % of vehicles stolen in the city have been recovered. The average time to vehicle recovery is 7 days.

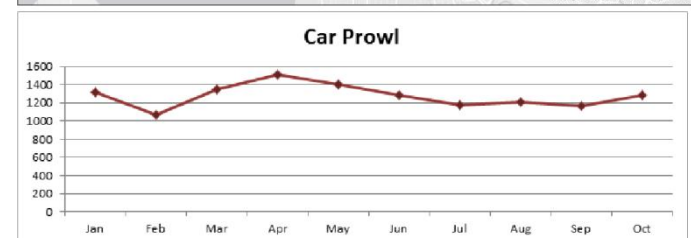
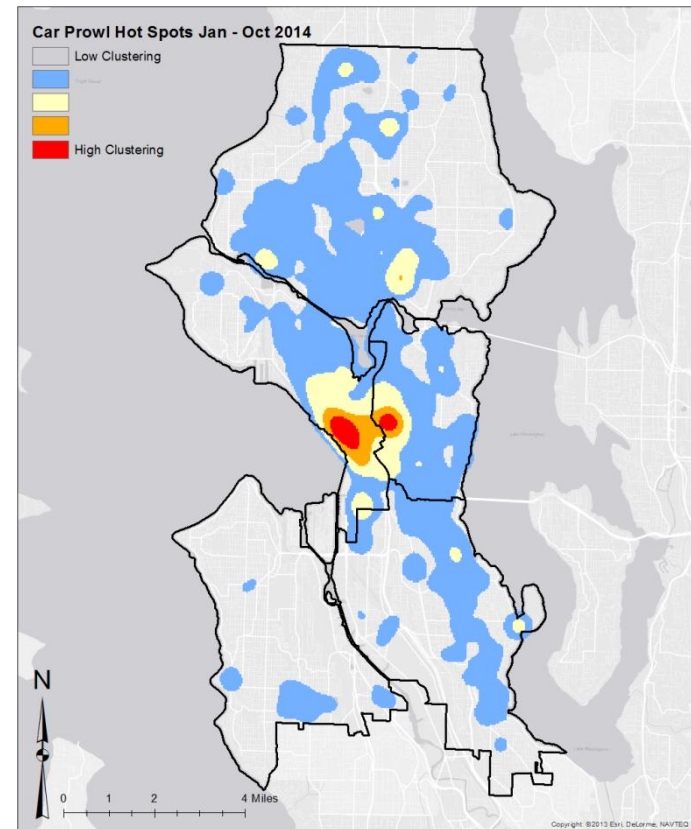
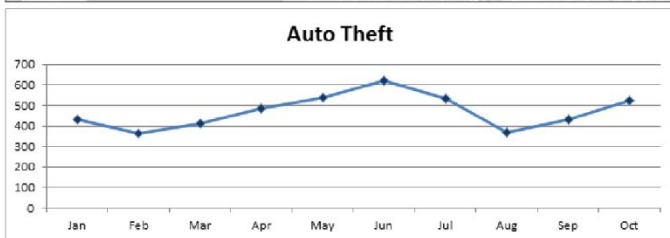
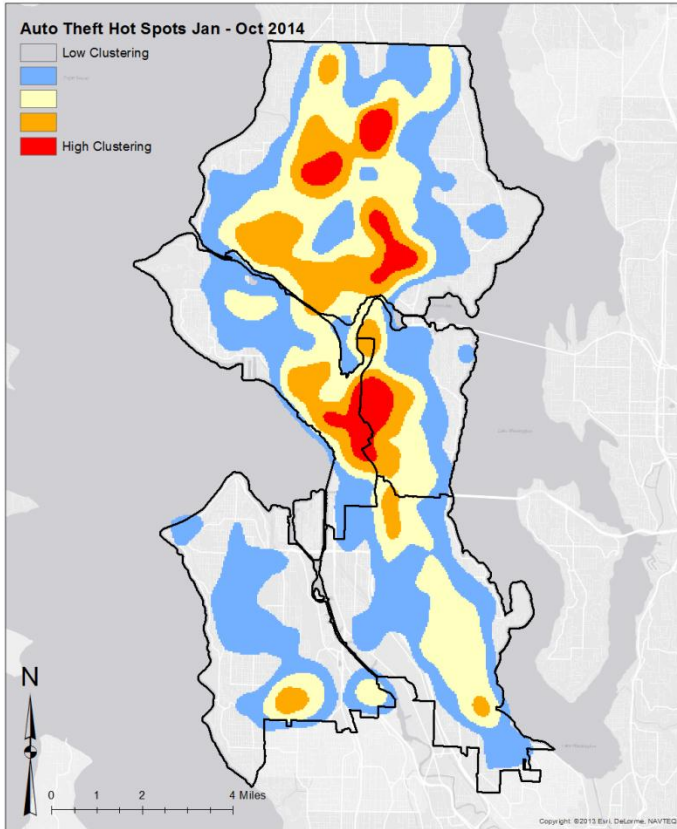
At Risk Vehicles: 77% of all stolen vehicles in the City are model year 2001 and older.

The vehicles most likely to be stolen are:

MAKE	MODEL
HOND	ACC
HOND	CIV
SUBA	LEG



Auto Theft and Car Prowl Citywide



PRECINCT UPDATES

North

North Precinct Major Crime Categories

January 1 to October 31, 2014

Crime	Jan	Feb	Mar	Apr	May	Jun	Jul	Aug	Sep	Oct	2014 Total	2013 Total	Percent Change
Homicide	0	1	0	0	0	0	1	0	0	0	2	3	-
Rape	0	2	4	4	4	1	2	6	1	0	24	24	-
Robbery	18	17	24	28	20	34	25	21	38	29	254	266	-5%
Aggravated Assault	30	23	31	47	50	45	38	45	61	37	407	321	27%
Burglary	227	208	207	232	263	254	245	263	205	241	2345	2270	3%
Larceny-Theft	705	616	738	756	769	748	695	763	665	725	7180	6476	11%
Auto Theft	149	146	192	234	261	335	241	181	185	264	2188	1405	56%
Total	1129	1013	1196	1301	1367	1417	1247	1279	1155	1296	12400	10765	15%

Crime categories are incident-based (not victim) and follow the UCR hierarchy classification rule.

Data was extracted on 11/11/14 from SPD RMS (Reposit) and excludes unfounded and non precinct-based locations.

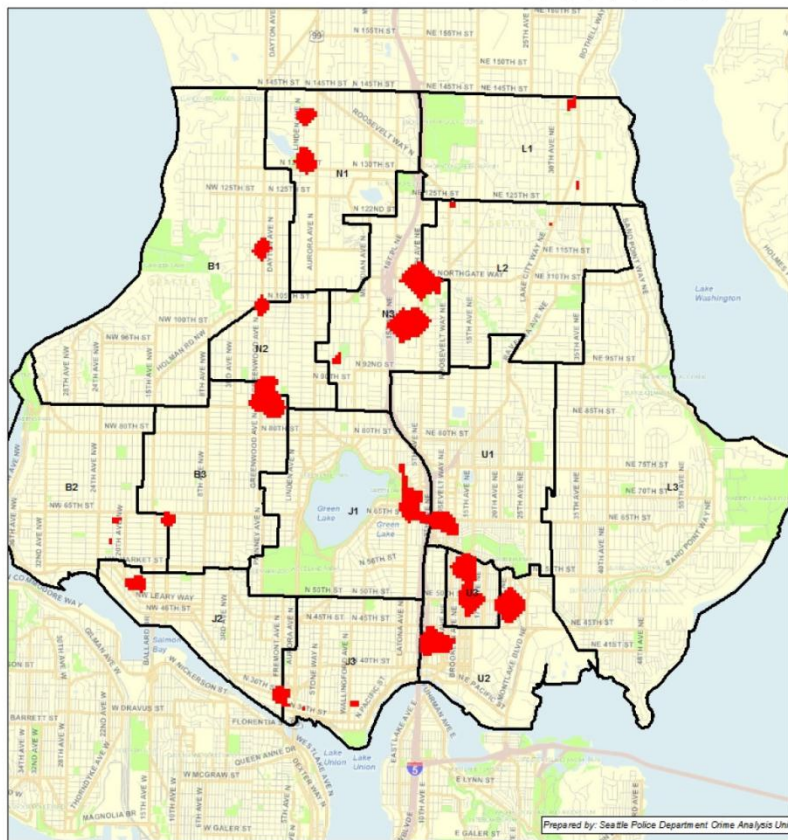
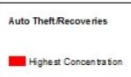
North Precinct Auto Theft



North Precinct Auto Theft/Recovery Concentrations January through October 2014

Date: 11/7/2014

CONFIDENTIAL - FOR POLICE USE ONLY



Prepared by: Seattle Police Department Crime Analysis Unit

Auto Theft/Recoveries

Map identifies the areas in the North Precinct where auto theft and vehicle recoveries are concentrated.

Identified areas account for 19% of all vehicles stolen and 8% of all recovered vehicles.

Recovery Rate:

77 % of vehicles stolen in the North Precinct are recovered. The average time to vehicle recovery is 7 days.

At Risk Vehicles: 83% of all stolen vehicles in the North Precinct are model year 2001 and older.

The vehicles most likely to be stolen are:

MAKE	MODEL
HOND	ACC
HOND	CIV
SUBA	LEG

TIME OF DAY: Precinct wide Auto Thefts are typically stolen between 2100 and 0100 hrs.

DAY OF WEEK: Monday, Thursday and Tuesday are the most active.

REPEAT ADDRESSES LAST 90 DAYS

ADDRESS	Count
400 BLOCK NE NORTHGATE WY	11
10200 BLOCK 1 AV NE	6
520 BLOCK N 85 ST	3
500 BLOCK NE 70 ST	3
11500 BLOCK PINEHURST WY NE	3
10700 BLOCK 8 AV NE	3

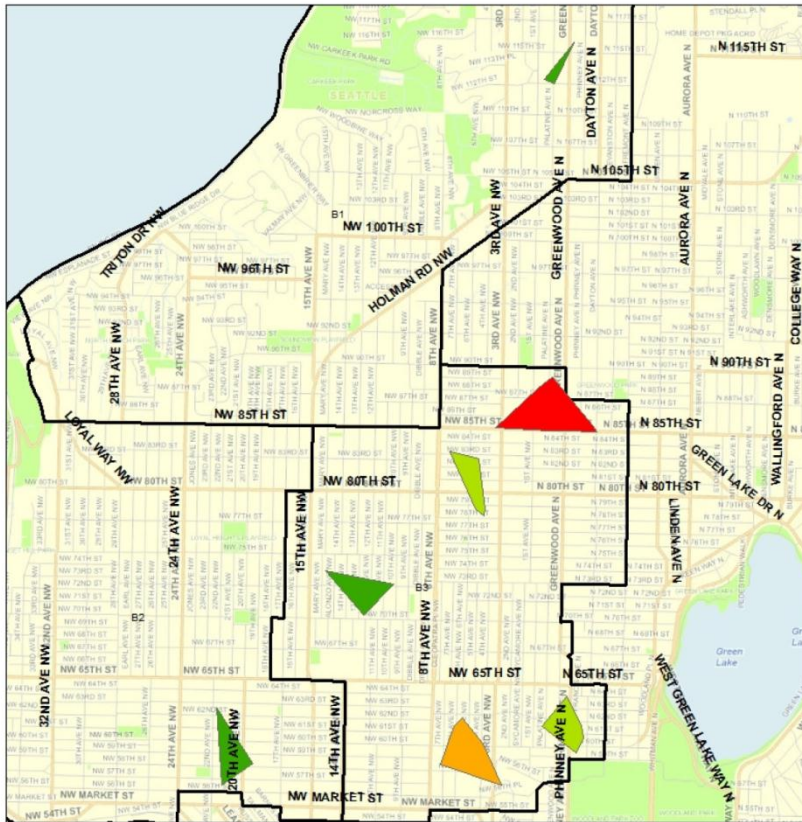
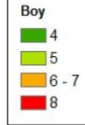
North Precinct Auto Theft



Boy Sector Auto Theft Hot Spot Oct 6 - Nov 7 2014

Date: 11/7/2014

CONFIDENTIAL - FOR POLICE USE ONLY



Prepared by: Seattle Police Department Crime Analysis Unit

30 Day Hot Spot Map:

Total Vehicles Stolen: 74

Same time period last year: 27

% Change from Same Time Period Last Year: 174%

TIME OF DAY: Vehicles are typically stolen between 2000 and 0600.

DAY OF WEEK: Thu and Sun are the most active

REPEAT ADDRESSES:

ADDRESS	COUNT
7500 BLOCK DIBBLE AV NW	2
3200 BLOCK NW 59 ST	2
3000 BLOCK NW 70 ST	2

THERE WERE 3 BURGLARIES IN THE 7300 BLOCK OF DIBBLE AV NW ON 10/17/2014

MOST COMMON VEHICLES STOLEN:

LATE 1990'S and EARLY 2000'S

MAKE	MODEL
SUBA	LEG
HOND	ACC

SUSPECTS LAST 30 DAYS:

NO PC/INFORMATION ONLY

No Suspects Arrested.

PRECINCT UPDATES

A large, dark, circular sculpture with a central hole, set against a background of a lake, trees, and the Space Needle. The sculpture is made of a dark, possibly black, material and has a complex, organic shape with several smaller circular indentations. The central hole is perfectly circular and frames a view of the Space Needle in the distance. The background shows a body of water, green trees, and a blue sky with white clouds.

East

East Precinct Major Crime Categories

January 1 to October 31, 2014

Crime	Jan	Feb	Mar	Apr	May	Jun	Jul	Aug	Sep	Oct	2014 Total	2013 Total	Percent Change
Homicide	0	0	0	3	0	2	0	0	0	0	5	3	-
Rape	1	1	1	2	0	1	2	1	0	2	11	15	-
Robbery	18	6	14	17	25	30	21	36	27	17	211	241	-12%
Aggravated Assault	29	20	25	20	25	27	33	33	36	39	287	231	24%
Burglary	82	64	81	75	103	70	82	70	92	74	793	869	-9%
Larceny-Theft	369	289	466	458	420	423	366	389	417	411	4008	3222	24%
Auto Theft	68	51	48	64	88	70	86	43	58	67	643	453	42%
Total	567	431	635	639	661	623	590	572	630	610	5958	5034	18%

Crime categories are incident-based (not victim) and follow the UCR hierarchy classification rule.

Data was extracted on 11/11/14 from SPD RMS (Reposit) and excludes unfounded and non precinct-based locations.

East Precinct Robbery Emphasis

Updated 10/27-Robberies In Area Since Emphasis Began September 5th

Date Range September 5-October 27, 2014

Time Range: 2145-0600

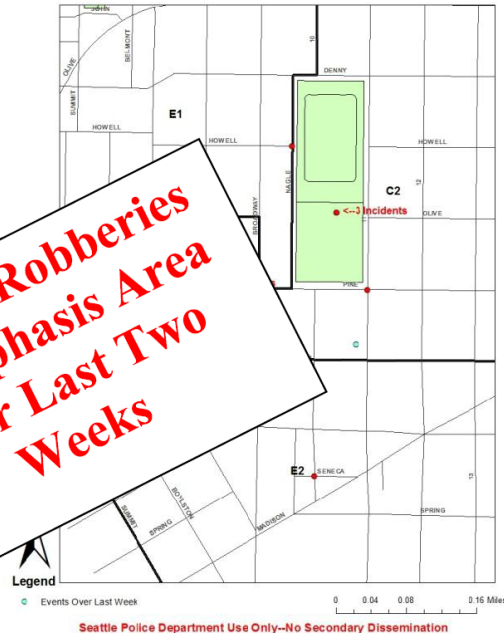
Suspect Description: Black males in their twenties or White female with blonde or sandy colored hair.

Most Common Item Stolen: Cell phone, wallet

Most Common Days: Thursday - Monday

Other bulletins regarding robberies were published on 8/11, 8/19, and 9/10/6.

**No New Robberies
In Emphasis Area
Over Last Two
Weeks**



On September 5, 2014 the East Precinct began emphasis patrol in the Pike/Pine/Cal Anderson area to combat the increased number of street robberies in the area (24 in the month of August). **There have been no new robberies in the emphasis area in the last two weeks. This series will be considered closed unless new information arises.**