



Seattle Police Department

SEA STAT

January 4th, 2017



PRINCIPLES OF SEASTAT

1. Accurate and Timely Information

Know what is happening

2. Effective Tactics

Have a plan

3. Rapid Deployment

Do it quickly

4. Relentless Follow-up and Assessment

If it works, do more. If not, do something else

FORMULATING CRIME REDUCTION STRATEGIES

Focus on...

- *Problem Locations*
- *Prolific Offenders*
- *Repeat and Vulnerable Victims*



CITYWIDE MAJOR CRIME

28 Day & Year to Date (YTD) Detail

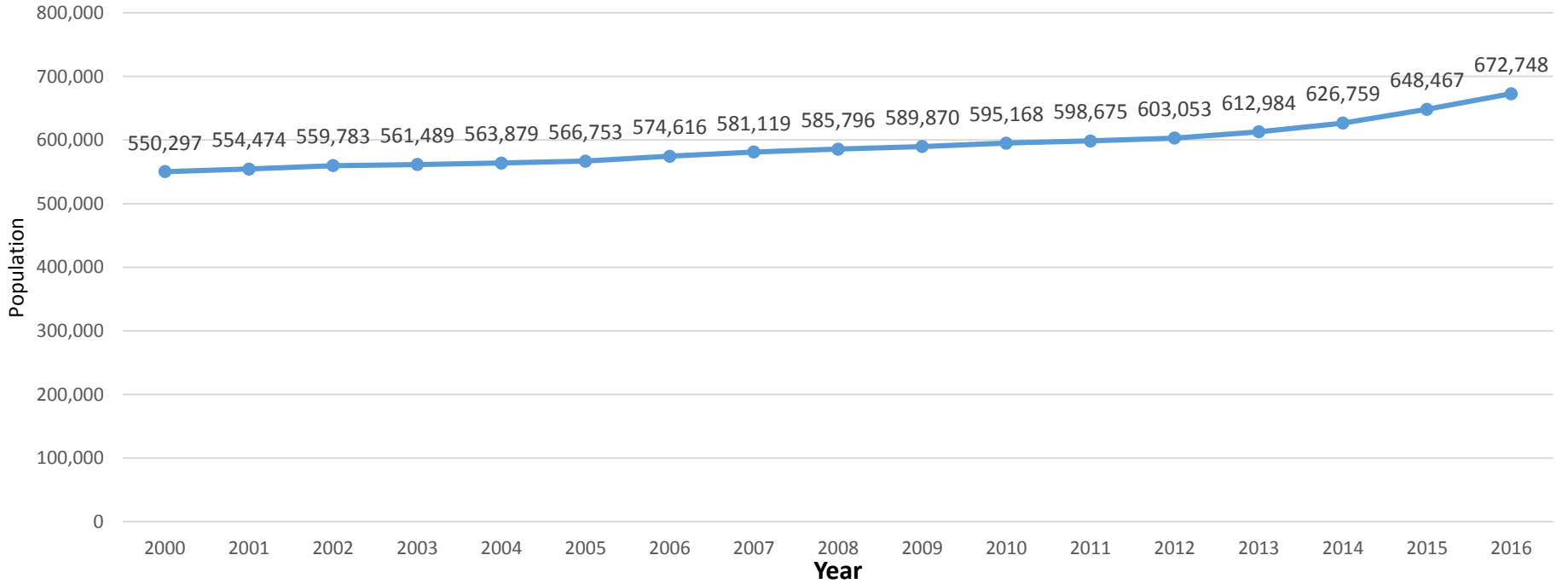
Crime Category	28 DAY Total	28 DAY Range	YTD 12/24 2016	YTD Range	YTD 12/24 2015	YTD Amount Change	YTD % Change
Homicide	2	1 - 3	19	20 - 24	24	-5	-21%
Rape	17	4 - 10	168	94 - 118	110	58	+53%
Robbery	122	105 - 131	1,526	1409 - 1571	1,520	6	+0%
DV Assault - Aggravated	41	40 - 50	589	547 - 669	560	29	+5%
Assault-Aggravated (Excludes DV)	129	86 - 98	1,536	1124 - 1380	1,452	84	+6%
Person Crime TOTAL	311	254 - 272	3,838	3300 - 3656	3,666	172	+5%
Burglary - Residential	352	384 - 482	4,980	4714 - 5380	5,400	-420	-8%
Burglary - Non-Residential	162	130 - 190	2,252	1738 - 1988	2,017	235	+12%
Larceny-Theft	797	862 - 1064	11,845	11018 - 12672	12,430	-585	-5%
Carprowl/Theft-Auto Accessories-Auto Parts-License Plate	1,093	800 - 1202	14,165	10610 - 14494	13,495	670	+5%
Motor Vehicle Theft	331	237 - 361	3,936	3159 - 4795	3,696	240	+6%
Property Crime TOTAL	2,735	2527 - 3183	37,178	31656 - 38912	37,038	140	+0%
GRAND TOTAL	3,046	2795 - 3441	41,016	34992 - 42532	40,704	312	+1%

Operations Dashboard Snapshot – 12/29/16

CITYWIDE POPULATION ESTIMATES

Estimated Citywide Population Change (2000-2016)

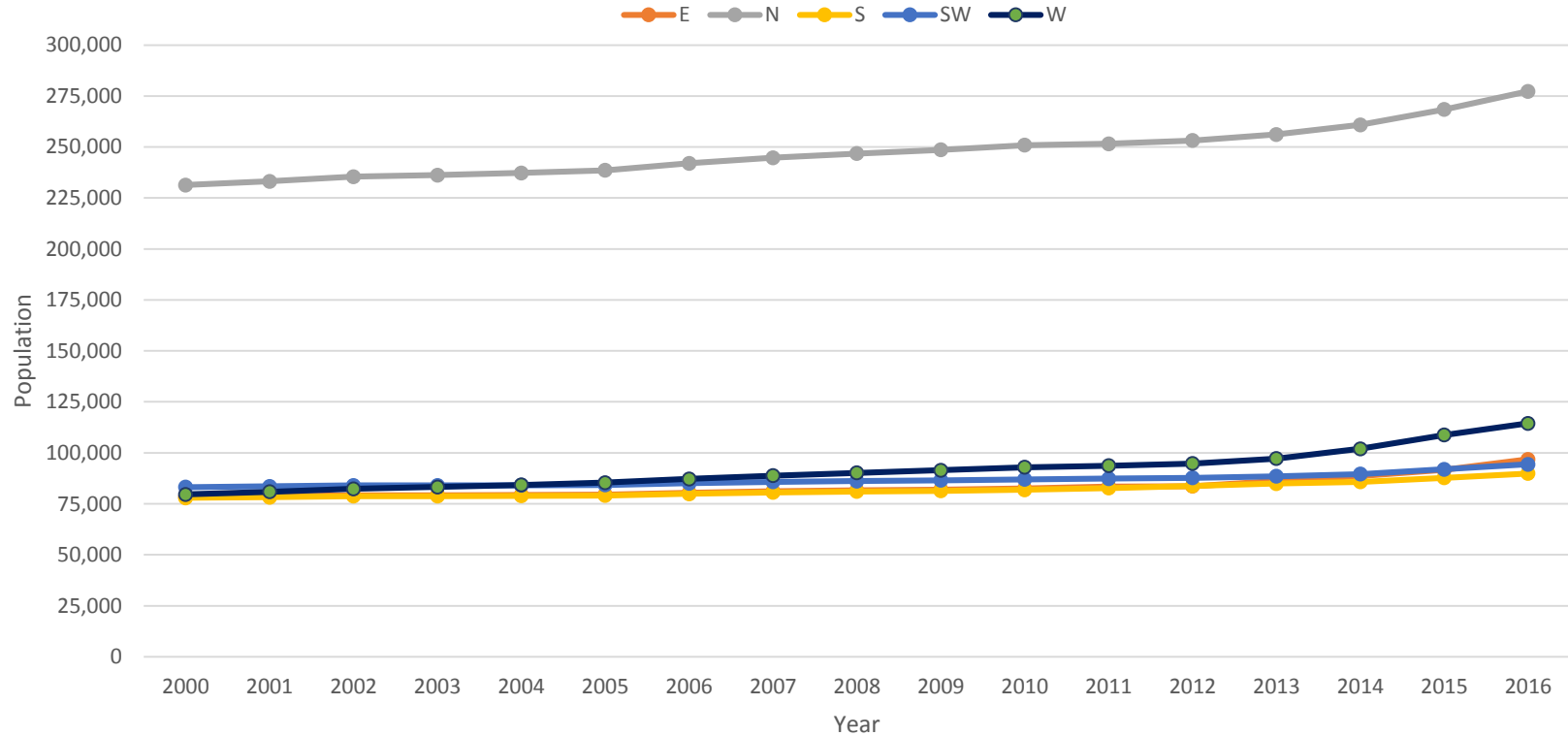
Population growth of approx. 13% from 2010-16



Data Source: Census Block Groups Population Estimates Washington State Office of Financial Management

POPULATION ESTIMATES PER PRECINCT

Estimated Citywide Population Change (2000-2016)



Precinct	% Change 2010-16
East	17%
North	11%
South	10%
SW	8%
West	23%

Data Source: Census Block Groups Population Estimates Washington State Office of Financial Management

YTD BUSINESS ROBBERIES

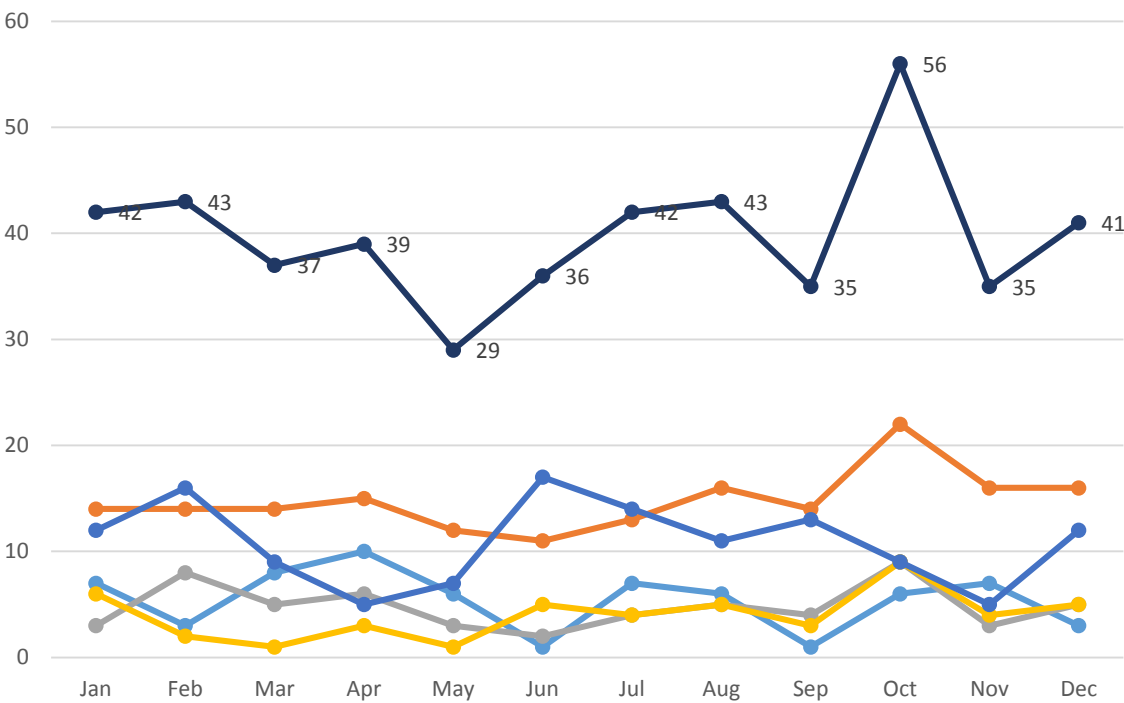
Total: 478 incidents

1 Incident took place in an "unknown" location and cannot be designated to a precinct

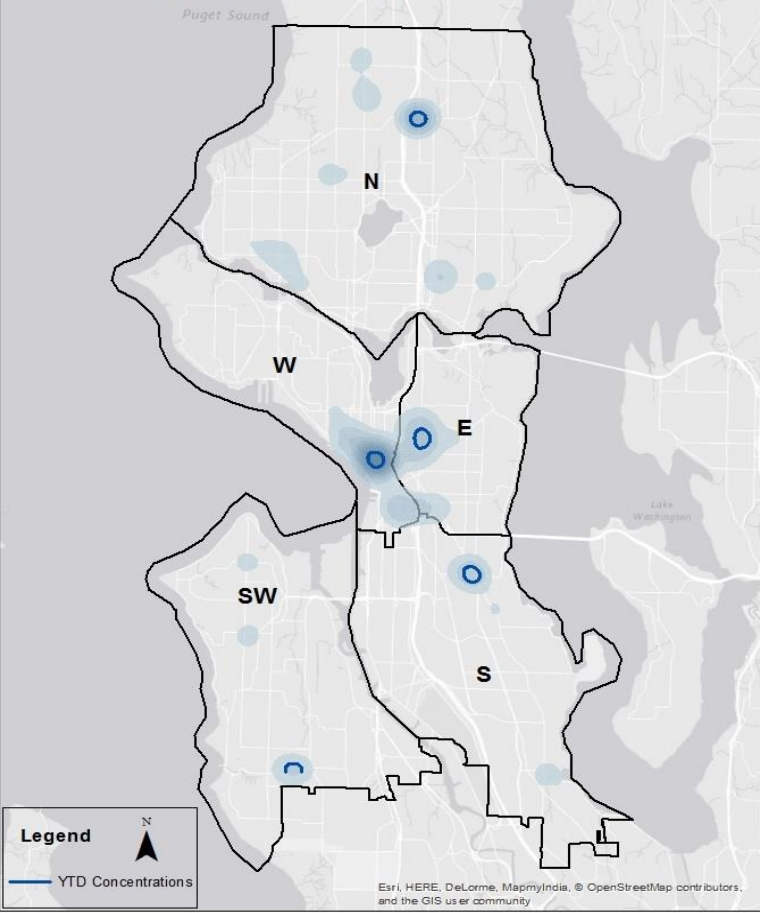
Commercial Robberies of Businesses

(Jan. 1- Dec. 28 2016)

—● East —● North —● South —● SW —● West —● Grand Total

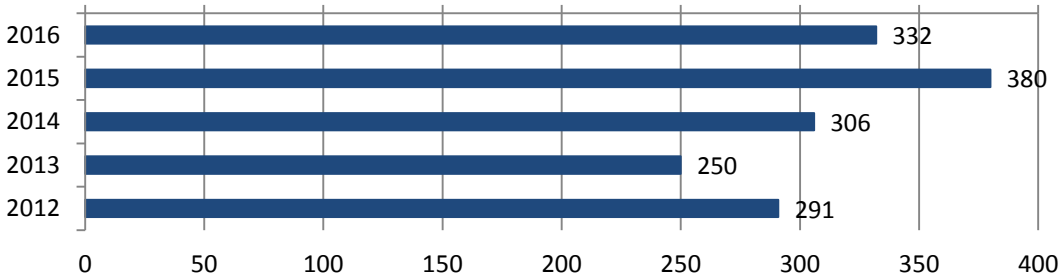


YTD Robberies from Businesses

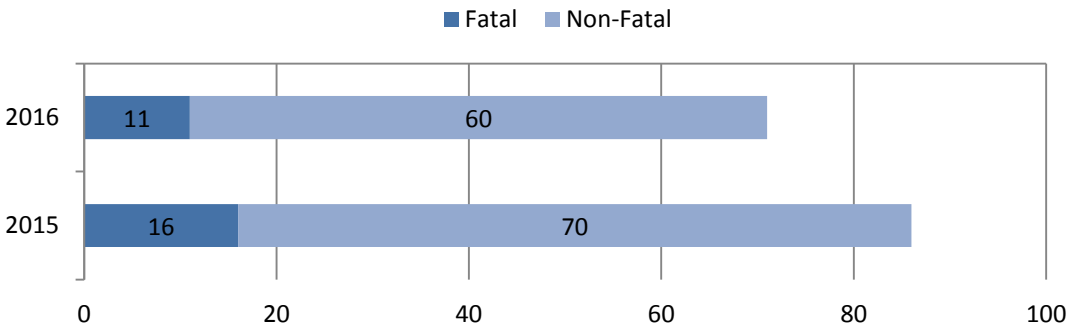


SHOTS FIRED REPORT

Shots Fired YTD
January 1 to December 26 (2012-2016)



Shootings by Injury Type YTD
January 1 to December 26 (2015 and 2016)



Shots Fired include injury-related gun crime and evidence of, or eyewitness to, a firearm-related incident.

Shootings are firearm-related incidents that resulted in injury or death.

Self-inflicted and officer-involved shootings are not included. Report inception: 2012.

Shots Fired November 29, 2016 to December 26, 2016 (18 GOs citywide*)

*Does not include most Self Inflicted or OIS

28 Day Overview

