



Seattle Police Department

SEA STAT



DATA-DRIVEN

November 9, 2016



PRINCIPLES OF SEASTAT

1. Accurate and Timely Information

Know what is happening

2. Effective Tactics

Have a plan

3. Rapid Deployment

Do it quickly

4. Relentless Follow-up and Assessment

If it works, do more. If not, do something else

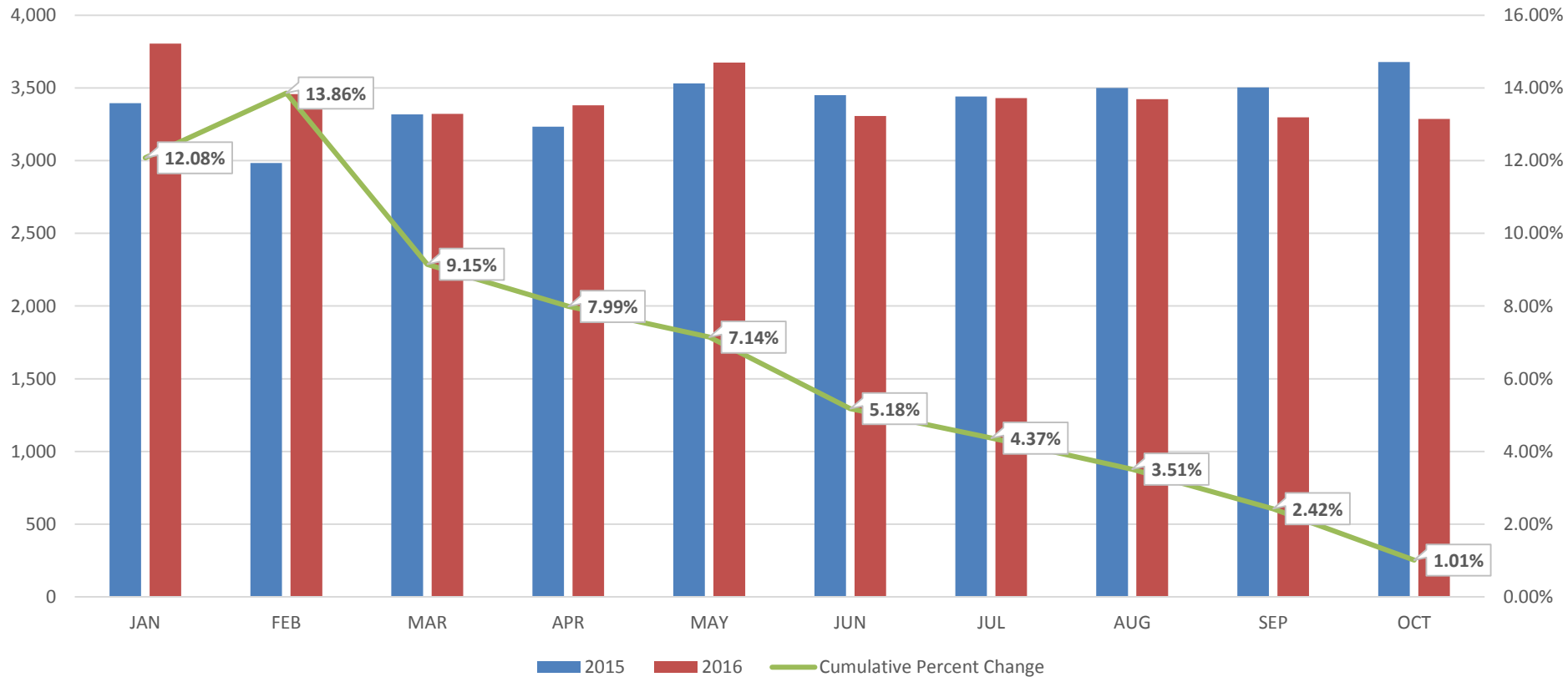
FORMULATING CRIME REDUCTION STRATEGIES

Focus on...

- *Problem Locations*
- *Prolific Offenders*
- *Repeat and Vulnerable Victims*

MAJOR CRIME COMPARISON BY MONTH

Citywide Major Crime Count and Cumulative Percent Change by Month
January 1 through October 31 (2015 and 2016)





CITYWIDE MAJOR CRIME

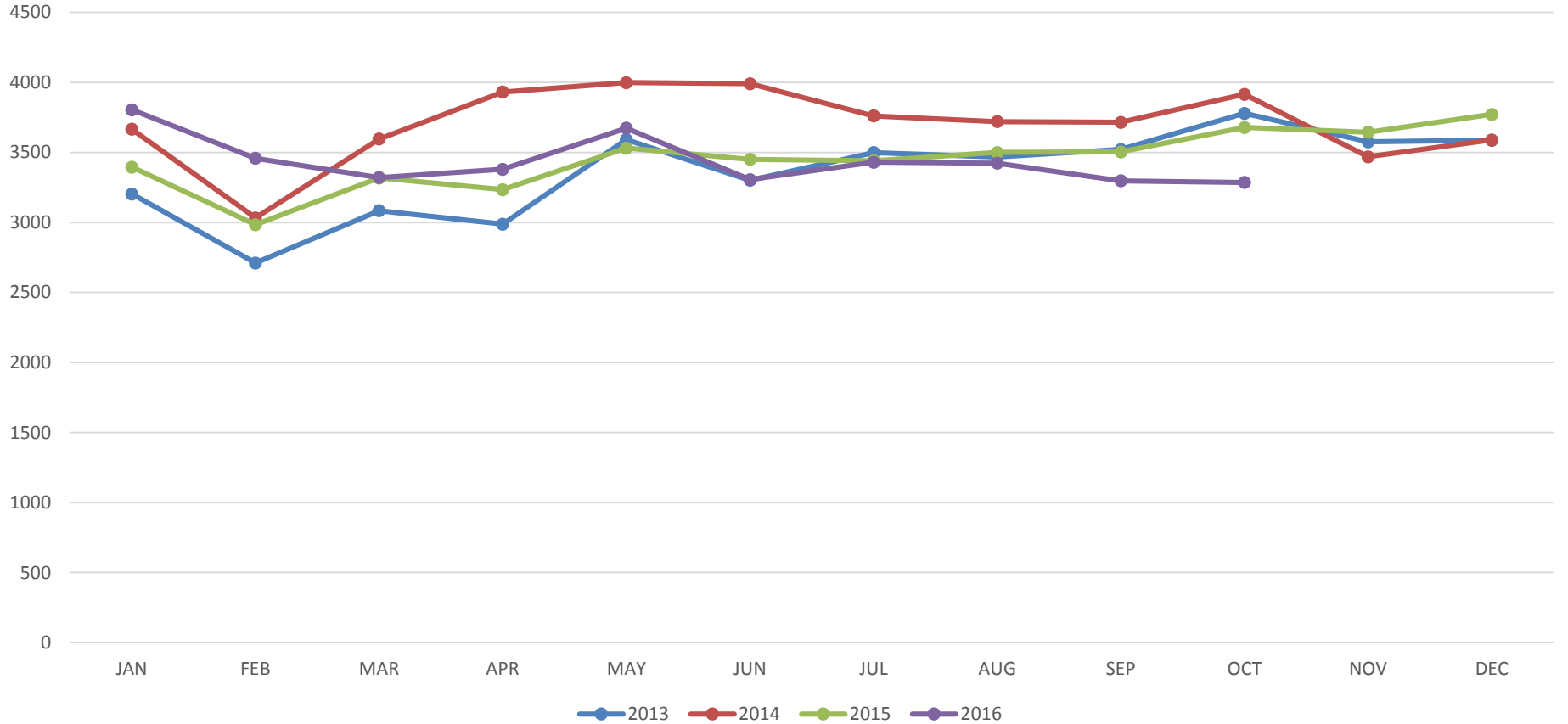
28 Day & Year to Date (YTD) Detail

Crime Category	28 DAY Total	28 DAY Range	YTD 11/05 2016	YTD Range	YTD 11/05 2015	YTD Amount Change	YTD % Change
Homicide	1	1 - 3	15	18 - 22	22	-7	-32%
Rape	15	8 - 10	142	85 - 103	92	50	+54%
Robbery	121	103 - 147	1,309	1205 - 1355	1,350	-41	-3%
DV Assault - Aggravated	44	37 - 49	503	465 - 593	468	35	+7%
Assault-Aggravated (Excludes DV)	102	95 - 109	1,318	982 - 1216	1,280	38	+3%
Person Crime TOTAL	283	256 - 306	3,287	2845 - 3201	3,212	75	+2%
Burglary - Residential	397	387 - 455	4,309	3913 - 4619	4,547	-238	-5%
Burglary - Non-Residential	170	139 - 187	1,950	1473 - 1691	1,724	226	+13%
Larceny-Theft	666	878 - 1022	10,032	9543 - 10925	10,700	-668	-6%
Carprowl/Theft-Auto Accessories-Auto Parts-License Plate	954	757 - 1327	11,899	9151 - 12373	11,335	564	+5%
Motor Vehicle Theft	346	243 - 423	3,290	2680 - 4242	3,147	143	+5%
Property Crime TOTAL	2,533	2520 - 3300	31,480	27144 - 33468	31,453	27	+0%
GRAND TOTAL	2,816	2786 - 3596	34,767	30035 - 36623	34,665	102	+0%

Operations Dashboard Snapshot – 11/8/16

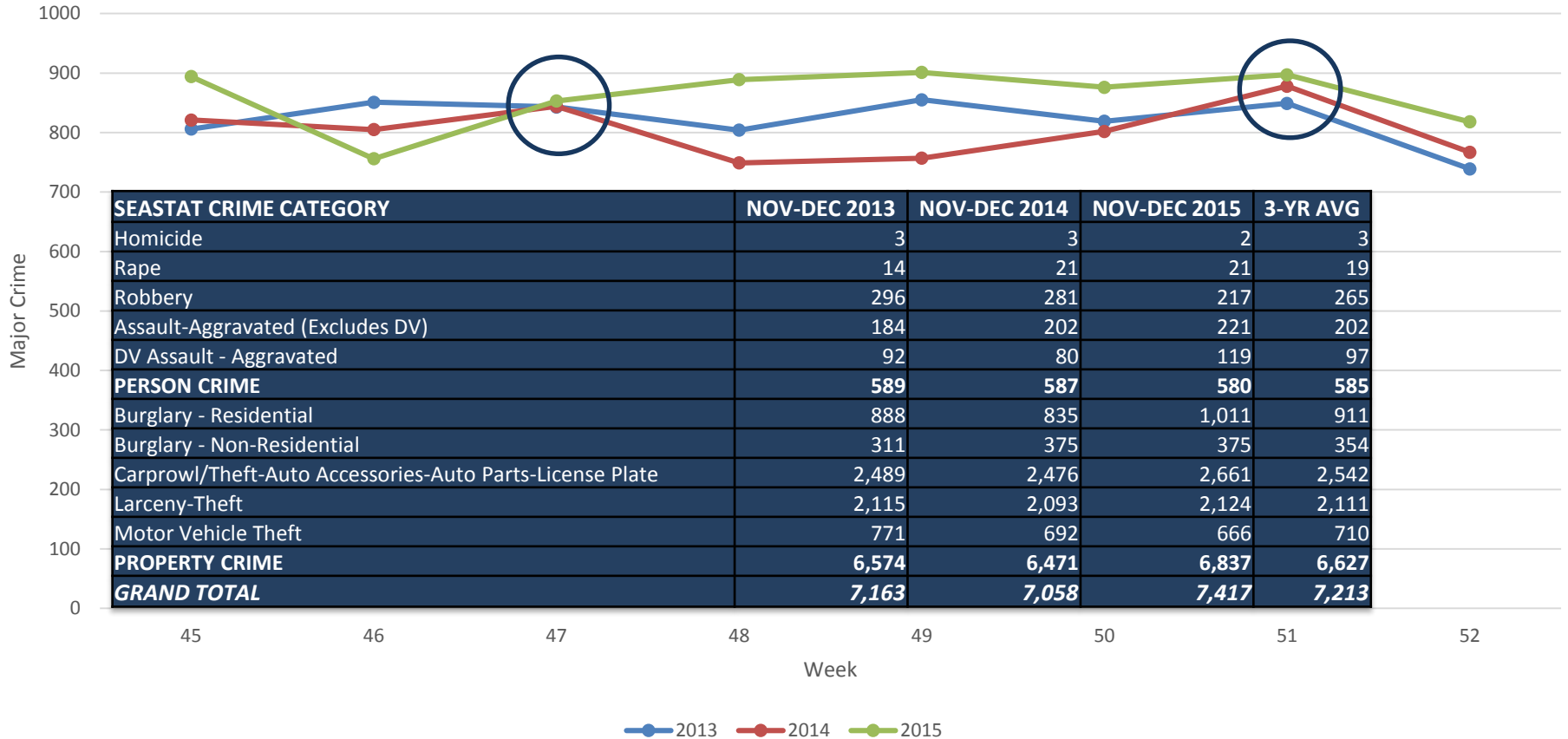
SEASONALITY ANALYSIS

Citywide Major Crime by Month and Year (2013-2016)

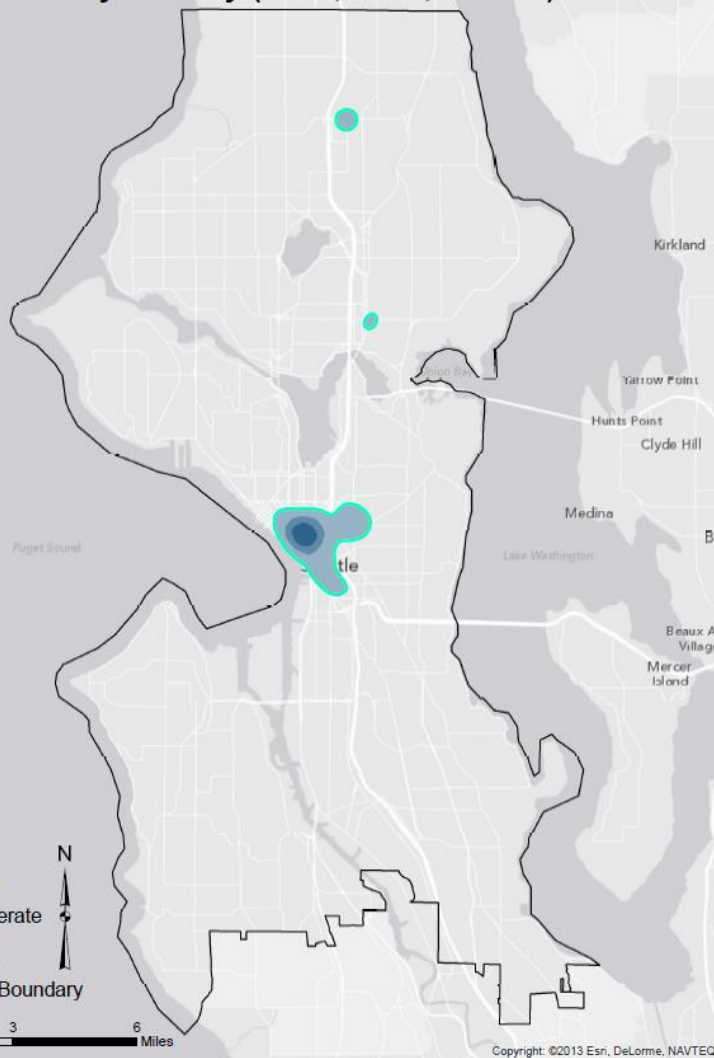


SEASONALITY ANALYSIS

Major Crime by Week for the Months of November and December



Citywide Major Crime for November and December by Density (2013, 2014, & 2015)

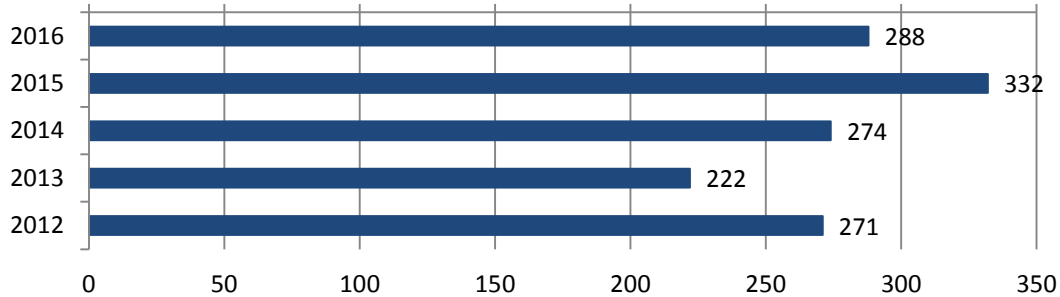


CITYWIDE MAJOR CRIME DENSITY LOCATIONS FOR NOV. & DEC. (2013-2015)

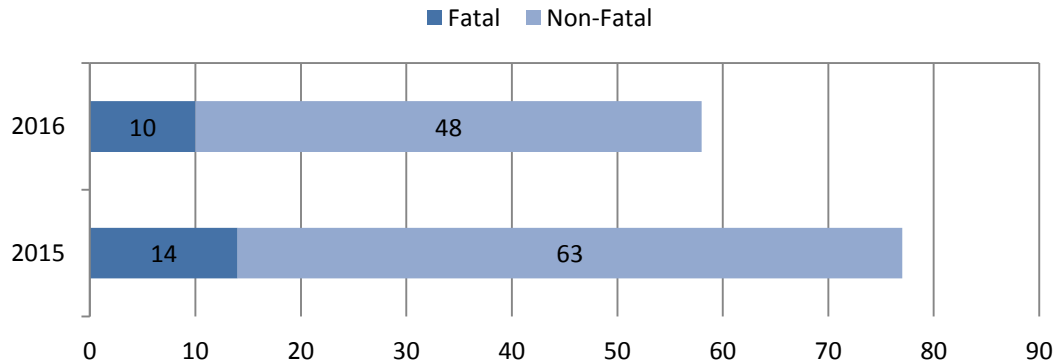
Density Location	Prominent Crime Types (Descending Order)	Repeat Addresses (Descending Order)
DOWNTOWN 2013 - 1,241 2014 - 1,484 2015 - 1,247	Car Prowl Shoplift Burglary Assault Street Robbery MV Theft	300 blk. Pine St. 600 blk. 5 th Ave. S. 1400 blk. 2 ND Ave. 500 blk. Pine St. 400 blk. Pine St. 600 blk. Pine St.
NORTHGATE 2013 - 132 2014 - 93 2015 - 156	Shoplift Car Prowl MV Theft	Northgate Shopping Areas 500 blk. NE Northgate Way
U DISTRICT 2013 - 13 2014 - 11 2015 - 33	Car Prowl Res. Burg. Shoplift	4500 blk. 12 AVE NE 4500 blk. U WY NE

SHOTS FIRED REPORT

Shots Fired YTD
January 1 to November 7 (2012-2016)



Shootings by Injury Type YTD
January 1 to November 7 (2015 and 2016)



Shots fired counts include multi-category general offense reports with evidence of, or eyewitnesses to, shots fired. Self-inflicted and officer involved shootings are excluded. Report inception: 2012.

Shots Fired October 11, 2016 to November 7, 2016
(20 GOs citywide*)

*Does not include most Self Inflicted or OIS

28 Day Overview

