



Seattle Police Department

SEA STAT

August 17, 2016



PRINCIPLES OF SEASTAT

1. Accurate and Timely Information

Know what is happening

2. Effective Tactics

Have a plan

3. Rapid Deployment

Do it quickly

4. Relentless Follow-up and Assessment

If it works, do more. If not, do something else

FORMULATING CRIME REDUCTION STRATEGIES

Focus on...

- *Problem Locations*
- *Prolific Offenders*
- *Repeat and Vulnerable Victims*



CITYWIDE MAJOR CRIME

28 Day & Year to Date (YTD) Detail

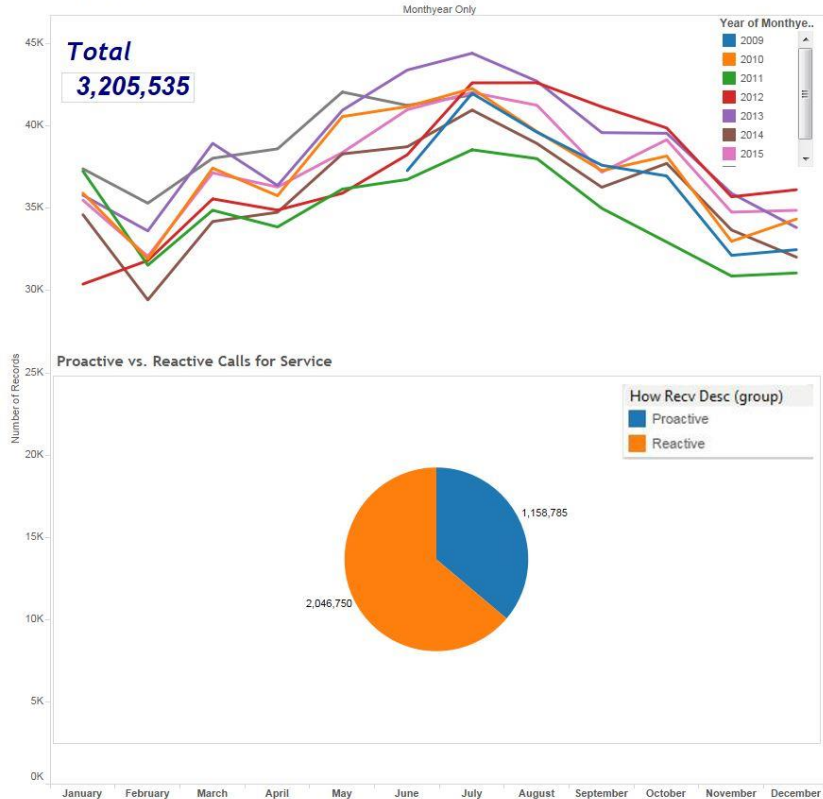
Crime Category	WEEK 1 07/17 - 07/23	WEEK 2 07/24 - 07/30	WEEK 3 07/31 - 08/06	WEEK 4 08/07 - 08/13	28 DAY Total	YTD 08/13 2015	YTD 08/13 2016	YTD Amount Change
Homicide	0	1	1	0	2	14	14	0
Rape	3	2	5	2	12	71	100	29
Robbery	35	30	34	26	125	989	944	-45
DV Assault - Aggravated	15	10	18	9	52	345	379	34
Assault-Aggravated (Excludes DV)	26	28	34	31	119	913	944	31
Person Crime TOTAL	79	71	92	68	310	2,332	2,381	49
Burglary - Residential	89	94	75	63	321	3,272	3,140	-132
Burglary - Non-Residential	35	37	33	24	129	1,249	1,401	152
Larceny-Theft	242	232	186	147	807	7,829	7,319	-510
Carprowl/Theft-Auto Accessories-Auto Parts-License Plate	237	240	209	212	898	7,768	8,753	985
Motor Vehicle Theft	60	65	63	65	253	2,344	2,344	0
Property Crime TOTAL	663	668	566	511	2,408	22,462	22,957	495
GRAND TOTAL	742	739	658	579	2,718	24,794	25,338	544

SPD Operations Dashboard Snapshot - 8/16/16

SPD CAD EVENTS

SPD CAD Events June 2009 through July 2016

SPD CAD Events



Mir Desc
(All)

How Received
(All)

Priority
(All)

Can Dup
 (All)
 (null)
 CANCEL
 DUPLICATE

Month of Monthyear Only
(All)

Day Only
(All)

PCT
(All)

Sector
(All)

Beat
(All)

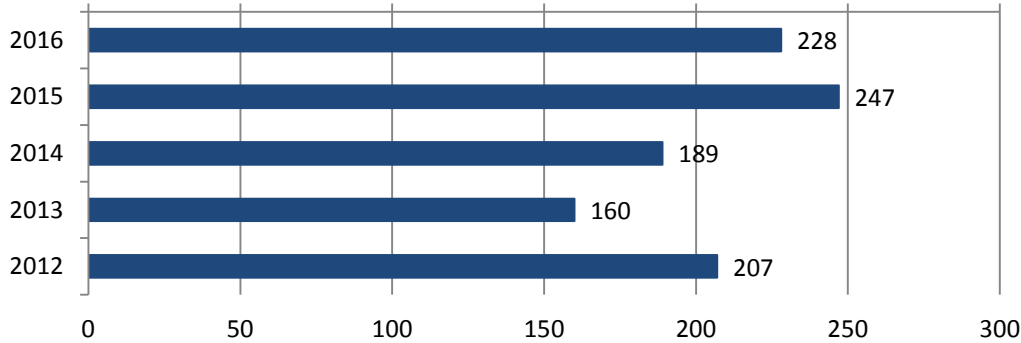
Neighborhood
(All)

How Recv Desc
 (All)
 911
 ALARM CALL (NOT POLICE ...
 HISTORY CALL (RETRO)
 IN PERSON COMPL
 ONVIEW
 POLICE (VARDA) ALARM
 PROACTIVE

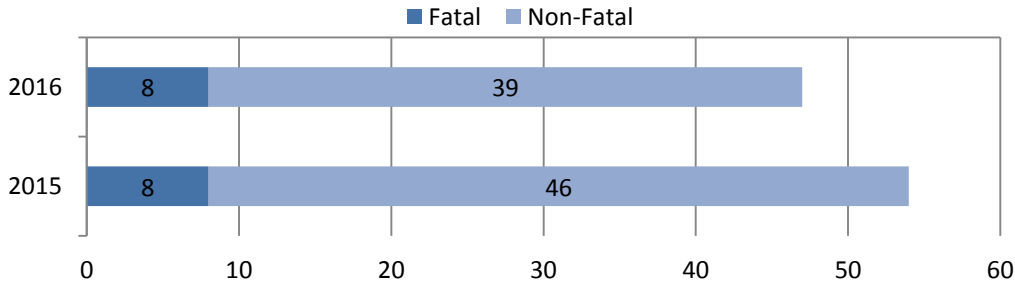
Year of Original Time Queued
 2009
 2010
 2011
 2012
 2013
 2014
 2015
 2016

SHOTS FIRED REPORT

Shots Fired YTD
January 1 to August 15 (2012-2016)



Shootings by Injury Type YTD
January 1 to August 15 (2015 and 2016)



Shots fired counts include multi-category general offense reports with evidence of, or eyewitnesses to, shots fired. Self-inflicted and officer involved shootings are excluded. Report inception: 2012.

Shots Fired July 19, 2016 to August 15, 2016 (38 GOs citywide*)

*Does not include most Self Inflicted or OIS

28 Day Overview

