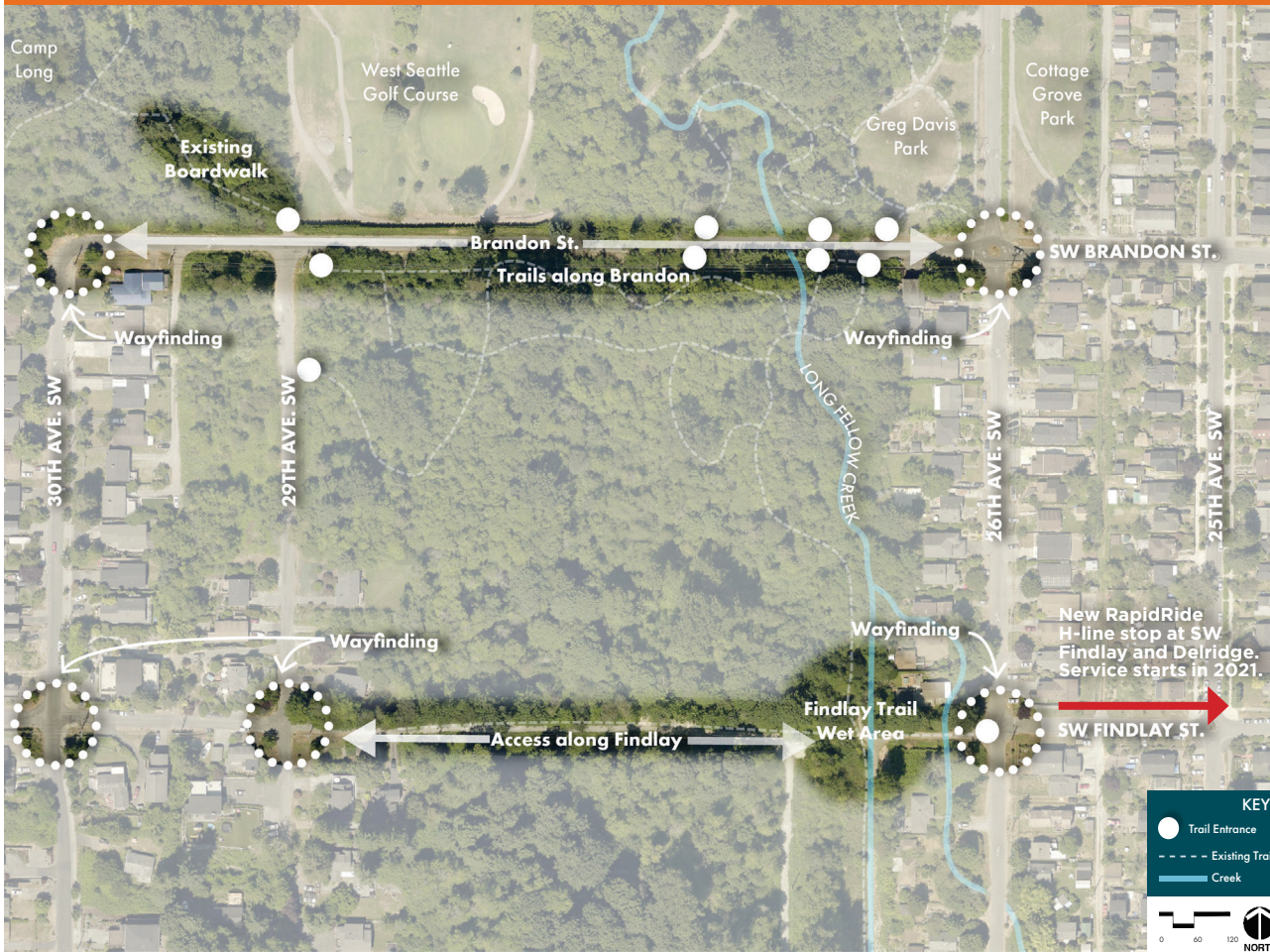


INPUT NEEDED!

SW BRANDON & SW FINDLAY STREETS TRAIL IMPROVEMENTS & WAYFINDING

AREA OF FOCUS



Come provide input and help create better pedestrian connections in Delridge!

Join us on a community walk and provide your ideas for creating improved pedestrian connections.

Seattle Parks and Recreation and Seattle Department of Transportation want to improve pedestrian paths and wayfinding along SW Brandon and SW Findlay streets. We also want to make the trail entries to Camp Long and Longfellow Creek from SW Brandon Street more open and welcoming to the public.

Please join us to learn about current plans and provide your ideas and feedback. Community involvement is essential to improving the trails and wayfinding. Following input at this December meeting and walk, we will develop design options and present themes at a second community meeting in early 2020.

SATURDAY, DEC. 7, 2019
11:00 AM – 1:00 PM

JOIN US AT GREG DAVIS PARK
CORNER OF 26TH AVE SW & SW BRANDON ST.

LOOK FOR
THE SEATTLE
PARKS AND
RECREATION
TENT

FOR ADDITIONAL INFORMATION OR IF YOU NEED AN INTERPRETER
OR SPECIAL MEETING ACCOMMODATIONS PLEASE CONTACT :

@ ed.pottharst@seattle.gov

☎ 206-386-4232

🌐 www.seattle.gov/parks/about-us/current-projects/sw-brandon-and-sw-findlay-streets-trail-improvements-and-wayfinding



 Seattle
Parks & Recreation

visit us at seattle.gov/parks