



BE'ER SHEVA PARK IMPROVEMENTS

March 3, 2018



PROJECT SCHEDULE

- PUBLIC MEETING #1 - UNDERSTANDING - SOMALI COMMUNITY CENTER - MARCH 3, 2018
- PUBLIC MEETING #2 - EXPLORING - RAINIER BEACH COMMUNITY CENTER - APRIL 21, 2018
- PUBLIC MEETING #3 - DECIDING - BEER SHEVA PARK - 12PM - 3PM - JUNE 2, 2018

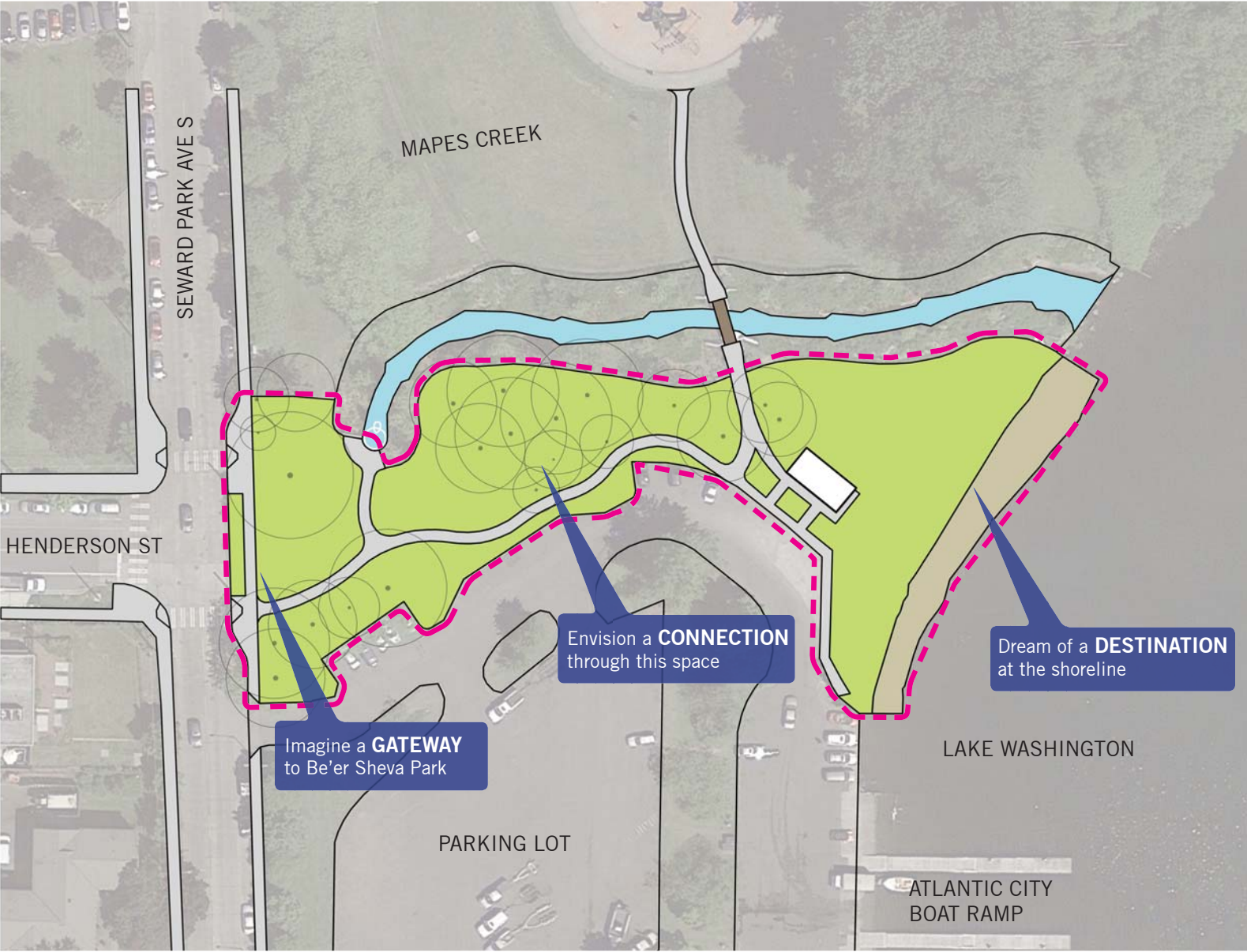
- NEXT STEPS
 - FINAL PROJECT REPORT AND FUNDRAISING PACKAGE - JUNE - JULY 2018
 - LINK2LAKE OPEN SPACE STEERING CMTY. FUNDRAISING
 - D.O.N. COMMUNITY PARTNERSHIP GRANT DEADLINES 2018 - JUNE 25, 2018 / SEPT. 10 2018
 - PHASE 1 PROJECT DESIGN AND CONSTRUCTION - 12 - 18 MONTHS

BE'ER SHEVA PARK IMPROVEMENTS

March 3, 2018



COMMUNITY FEEDBACK

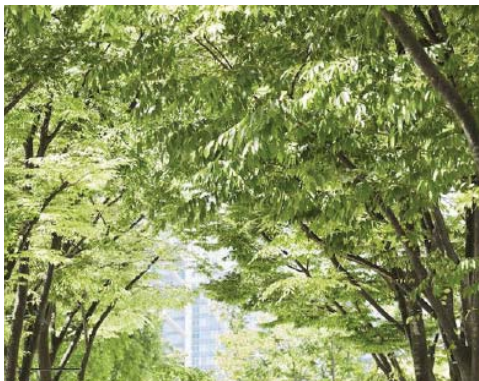


BE'ER SHEVA PARK IMPROVEMENTS

March 3, 2018



GATEWAY | INSPIRATIONAL IMAGERY



BE'ER SHEVA PARK IMPROVEMENTS

March 3, 2018



CONNECTION | INSPIRATIONAL IMAGERY



BE'ER SHEVA PARK IMPROVEMENTS

March 3, 2018



DESTINATION | INSPIRATIONAL IMAGERY



BE'ER SHEVA PARK IMPROVEMENTS

March 3, 2018



COMMUNITY FEEDBACK - MEETING #1

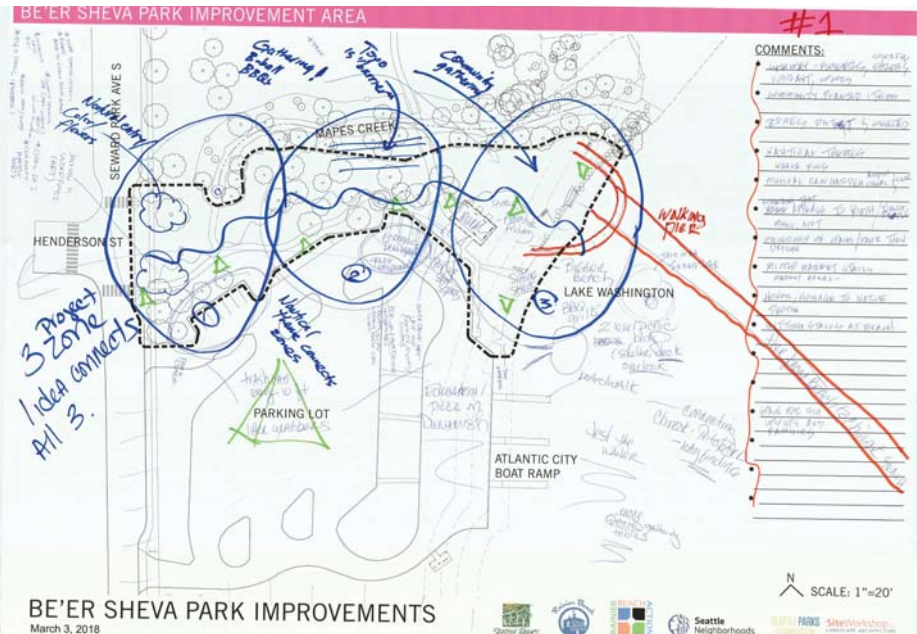


TABLE REPORT BACK

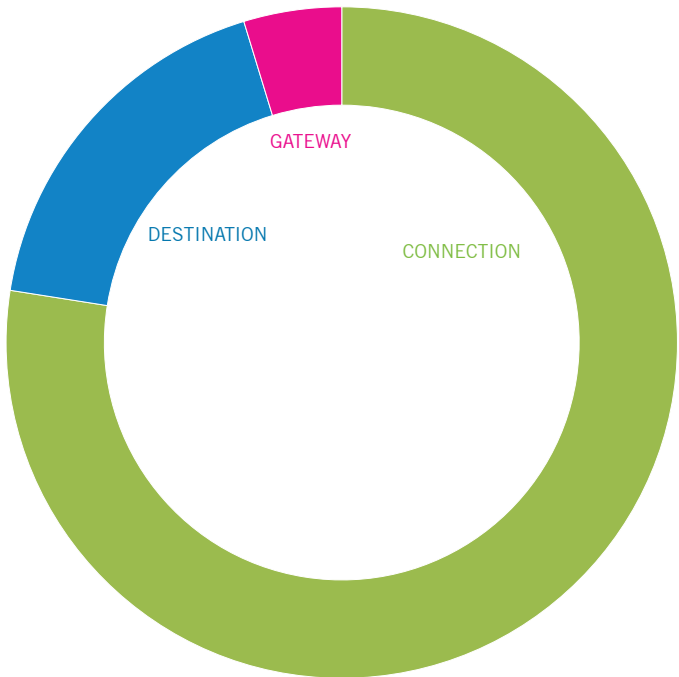
<ul style="list-style-type: none"> OWNERSHIP OF SPACE THROUGH DESIGN #1 MICRO-STALLS (REPLACE PARKING) PIER -> CHINOOK BEACH NATURAL GARDEN (GATEWAY) - COLORFUL FLOWERS TRASH/LITTER GRABBERS GATHERING RESPECT + HONOR (HISTORY) STAGE -> RAP/POETRY 	<ul style="list-style-type: none"> AREA FOR YOUTH TO CONNECT TO COMMUNITY #4 IMPROVE PEDESTRIAN FLOW HISTORICAL CONNECTION + EDUCATIONAL ELEMENT INTEGRATE NATURAL/RESTORATION + EDUCATIONAL VIEWS NATURAL SHORELINE RESTORATION BLUE/ORANGE (SCHOOL + COMMUNITY COLORS) BIKE LOOP/DESTINATION BIKE RACKS/BIKE REPAIR STATION
<ul style="list-style-type: none"> WELCOMING/GENEROUS AREA #2 BIKE TRAFFIC + ACCESS CLEAR PATH TO WATER AMENITY AREA / SHELTERS PIER BIRD INTEREST PATH NEAR CREEK 	<ul style="list-style-type: none"> CONCESSION STAND #5 CONNECTION TO RB HIGH SCHOOL SAFETY + LIGHTING LOOP/WALKING PATH ARTWORK THAT RESPECTS COMM. DIVERSITY CEPTED OVERLOOK SWIM IN WATER SIT + TOUCH WATER FISH POND/CLEANING STATION/GRILLS FAMILY GATHERING OUTDOOR FITNESS EQUIPMENT SHELTER -> EXTEND FROM BACK OF BATHROOM SHEDS - ACCESS TO WATER LARGE GROUP/FAMILY/RESERVABLE SPACES
<ul style="list-style-type: none"> STAGE #3 DESIGN BATHROOM W/ LOCAL ARTIST RENT-A-BOAT (ACCESSIBLE) MOSAIC @ ENTRY (REPRESENT RB COMMUNITY) APRIL/FOOD PROGRAM BETTER LIGHTING HONOR DIVERSITY FOOD PROGRAMS SUPPORT LOCAL BUSINESSES STREET ART CONCESSIONS/WAYS TO MAKE # LOCALLY USE # TO SUPPORT RB HIGH SCHOOL 	

BE'ER SHEVA PARK IMPROVEMENTS

March 3, 2018



COMMUNITY FEEDBACK - MEETING #1

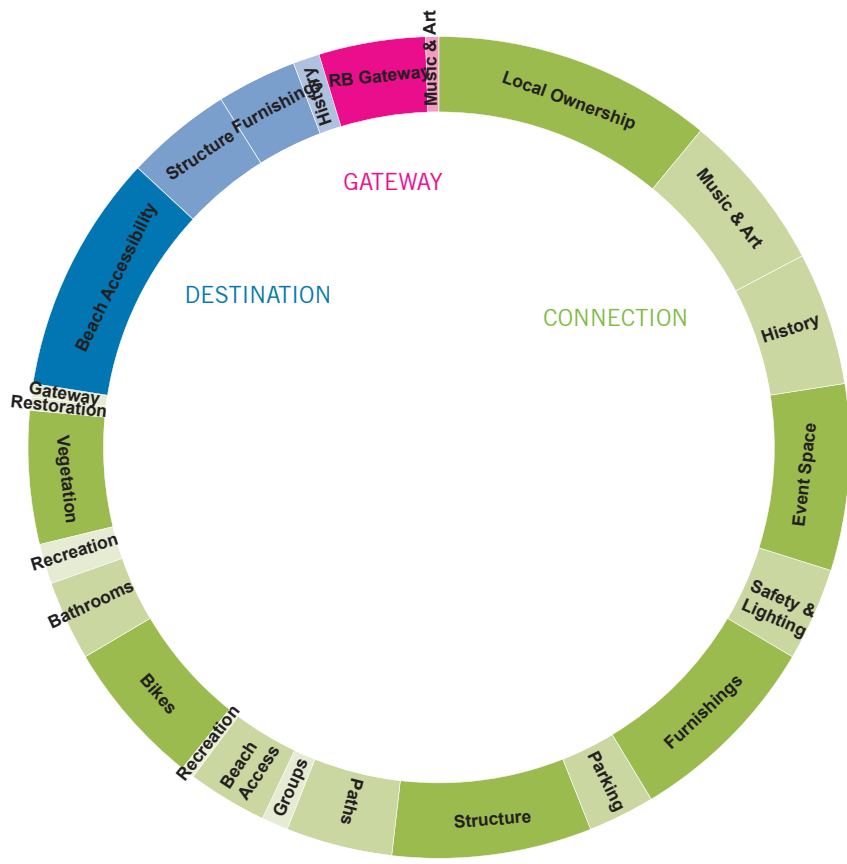


BE'ER SHEVA PARK IMPROVEMENTS

March 3, 2018



COMMUNITY FEEDBACK - MEETING #1

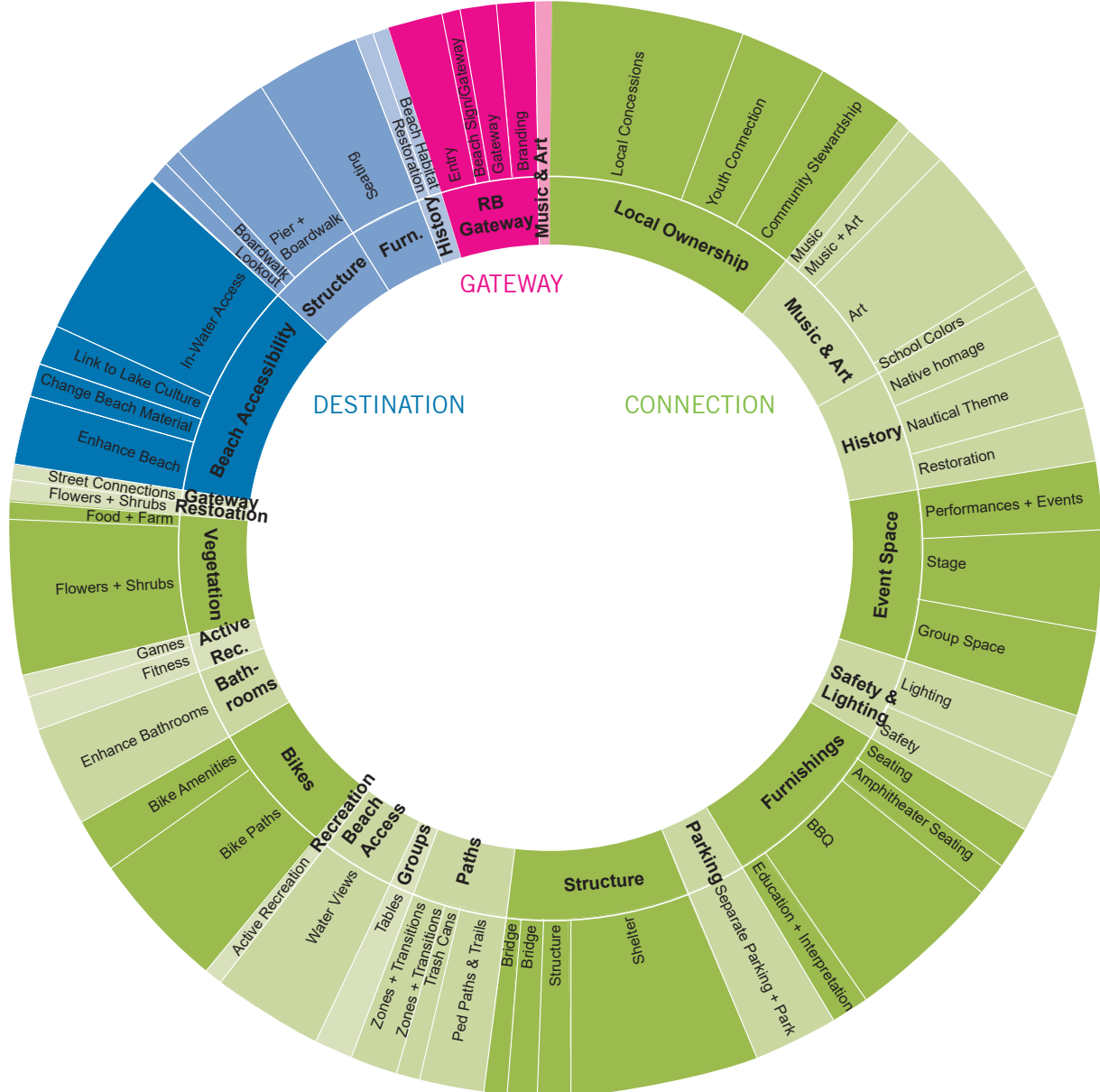


BE'ER SHEVA PARK IMPROVEMENTS

March 3, 2018



COMMUNITY FEEDBACK - MEETING #1



BE'ER SHEVA PARK IMPROVEMENTS

March 3, 2018

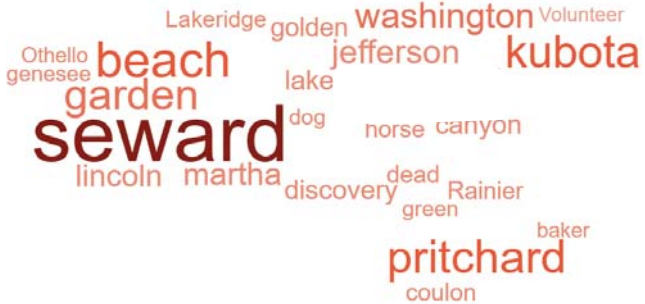
COMMUNITY FEEDBACK - SURVEYS



What do you love most about Be'er Sheva Park?

What do you want to do at the Park in the summer and the winter?

How do you use the water?



What would you like to { have less of, get rid of, or fix } ?

What would you like to have { added, more of, enhanced or preserved } ?

What other parks do you go to?

BE'ER SHEVA PARK IMPROVEMENTS

March 3, 2018



COMMUNITY FEEDBACK - KEY DESIGN ELEMENTS

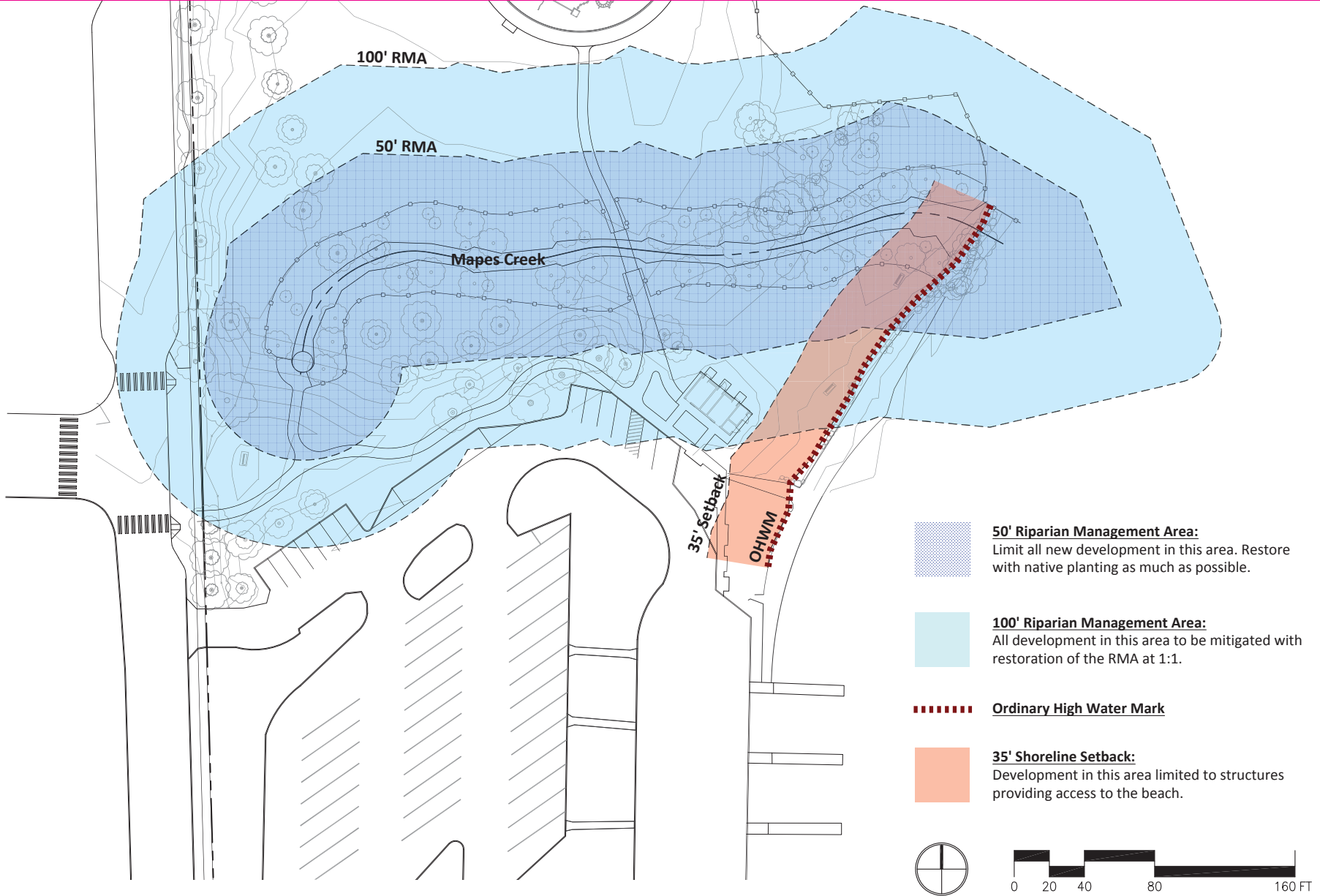
- Iconic entry expressing community identity
- Enhanced gathering, picnicking, BBQ opportunities
- Improved circulation and beach access
- Shelter for seasonal use
- Stage for performances
- Opportunities for community marketplace
- Improved riparian buffers and beach area





BE'ER SHEVA PARK IMPROVEMENTS


March 3, 2018




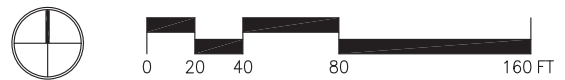


- 
50' Riparian Management Area:
 Limit all new development in this area. Restore with native planting as much as possible.

- 
100' Riparian Management Area:
 All development in this area to be mitigated with restoration of the RMA at 1:1.

- 
Ordinary High Water Mark

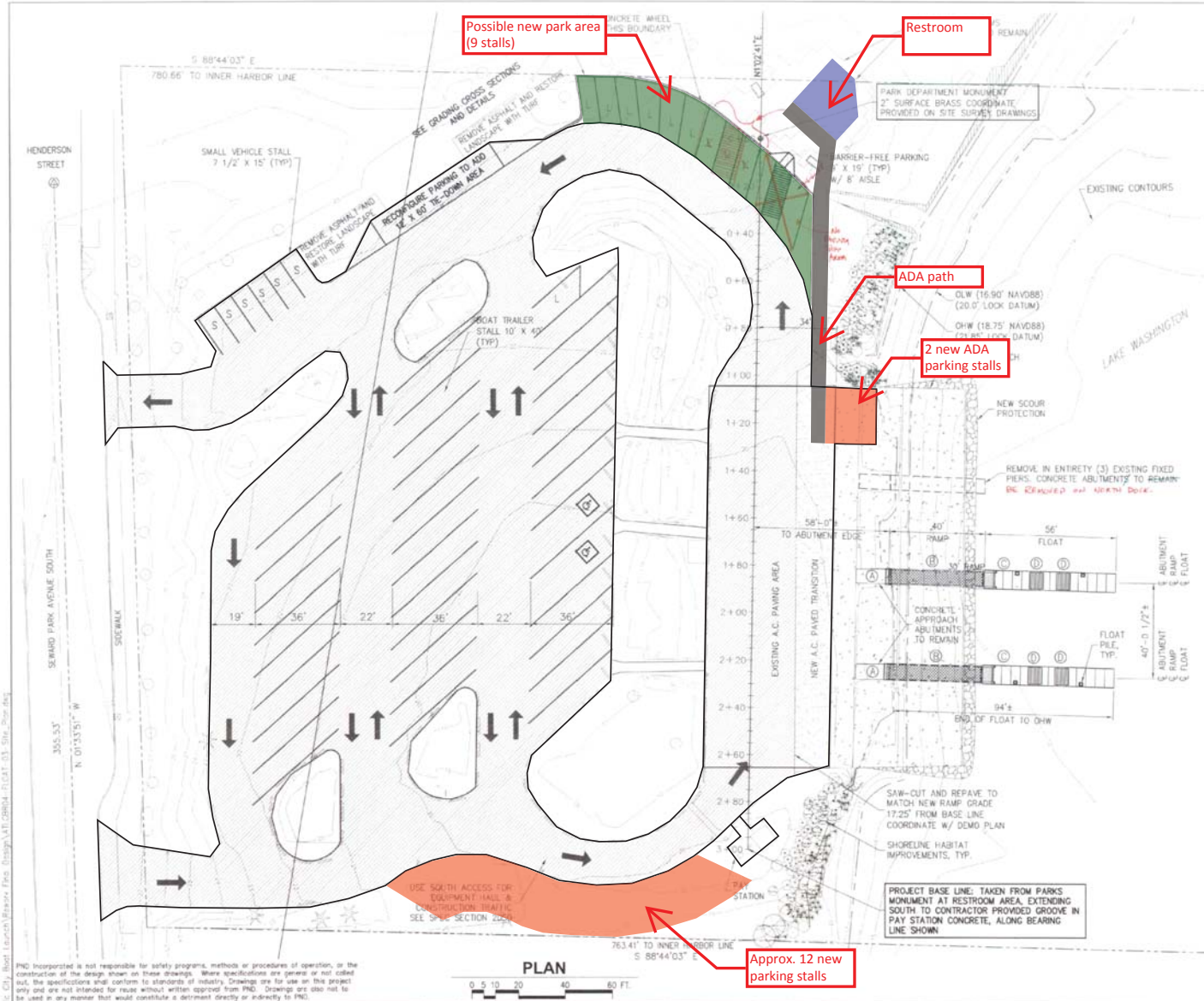
- 
35' Shoreline Setback:
 Development in this area limited to structures providing access to the beach.



BE'ER SHEVA PARK IMPROVEMENTS

March 3, 2018

PRELIMINARY PARKING STUDY

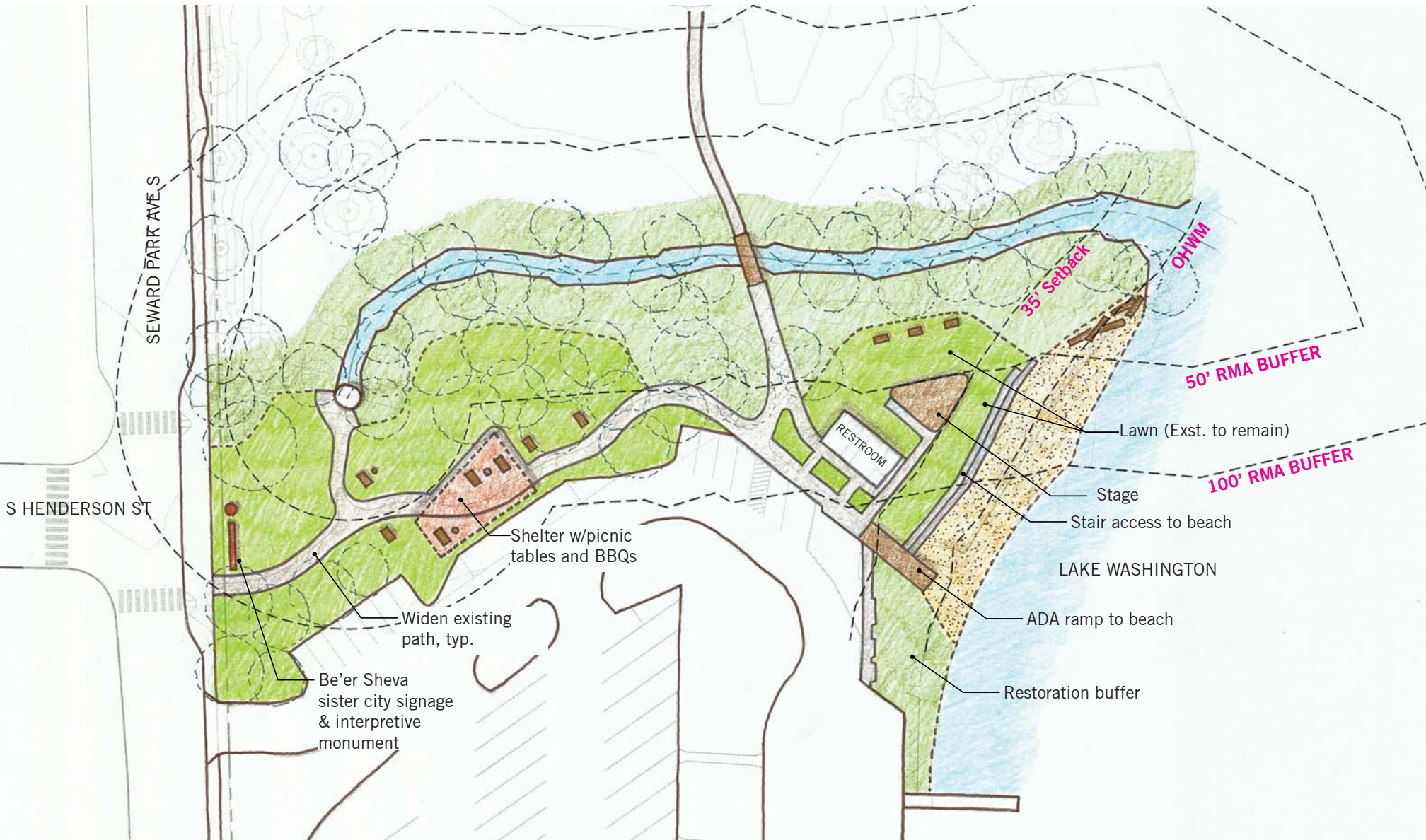


BE'ER SHEVA PARK IMPROVEMENTS

March 3, 2018



CONCEPT 1 - BEACH STEPS

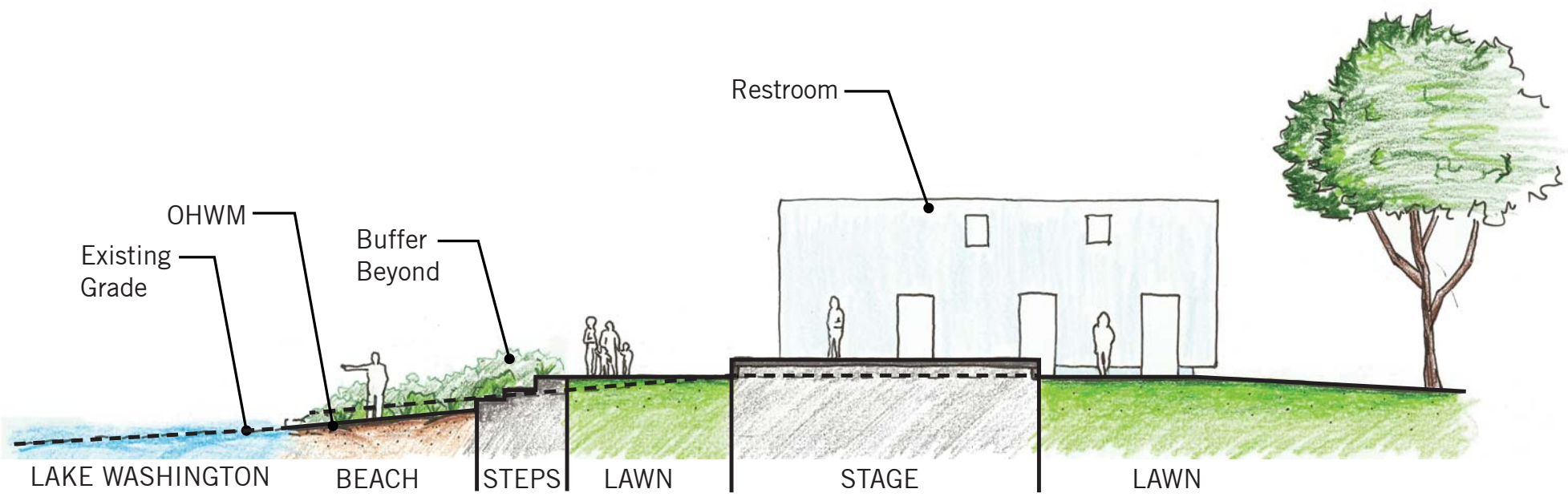


BE'ER SHEVA PARK IMPROVEMENTS

March 3, 2018



CONCEPT 1 - SECTION



BE'ER SHEVA PARK IMPROVEMENTS

March 3, 2018



CONCEPT 1 - GATHERING DIAGRAM



BE'ER SHEVA PARK IMPROVEMENTS

March 3, 2018



CONCEPT 1 - INSPIRATIONAL IMAGERY

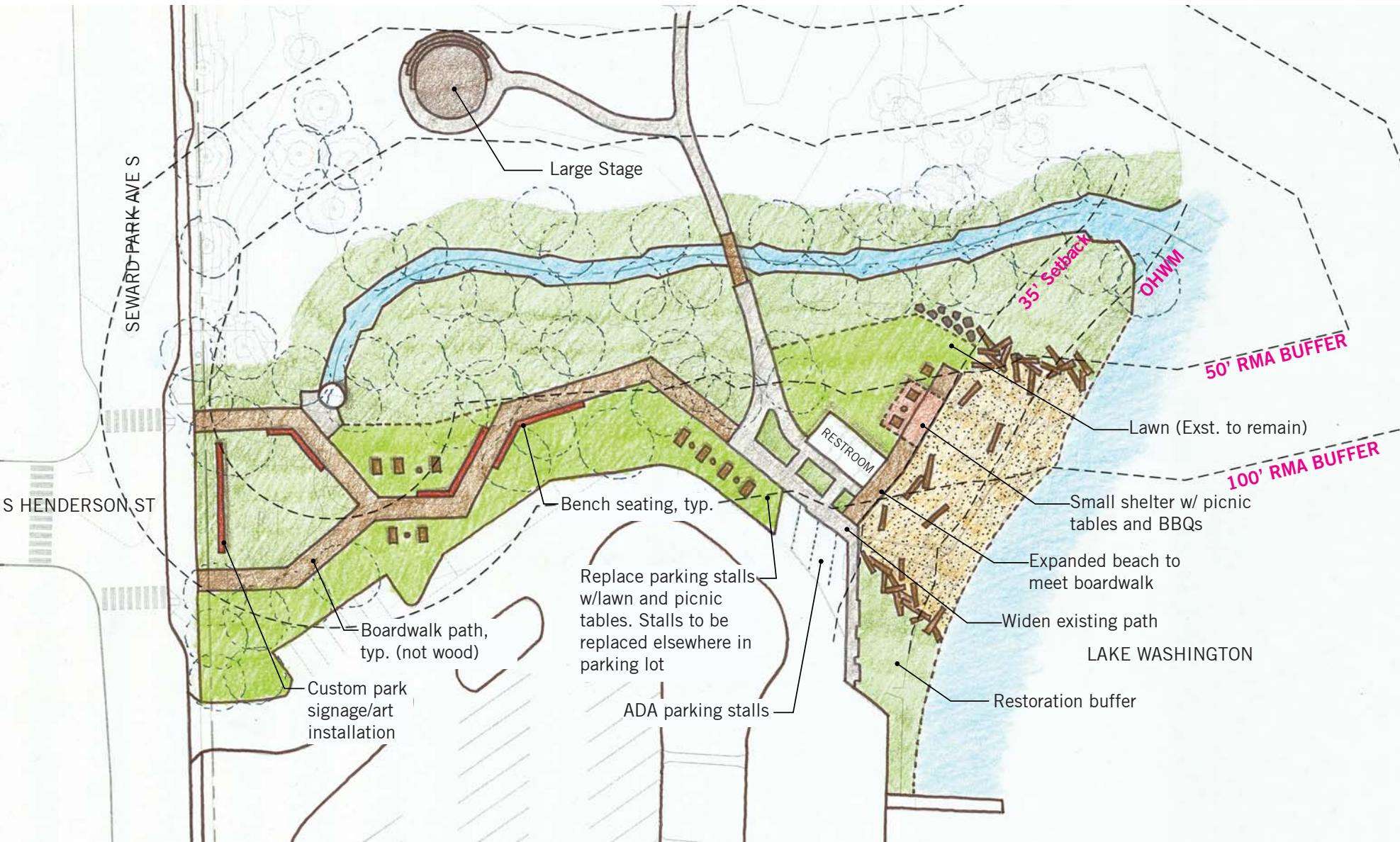


BE'ER SHEVA PARK IMPROVEMENTS

March 3, 2018



CONCEPT 2 - BEACH BOARDWALK

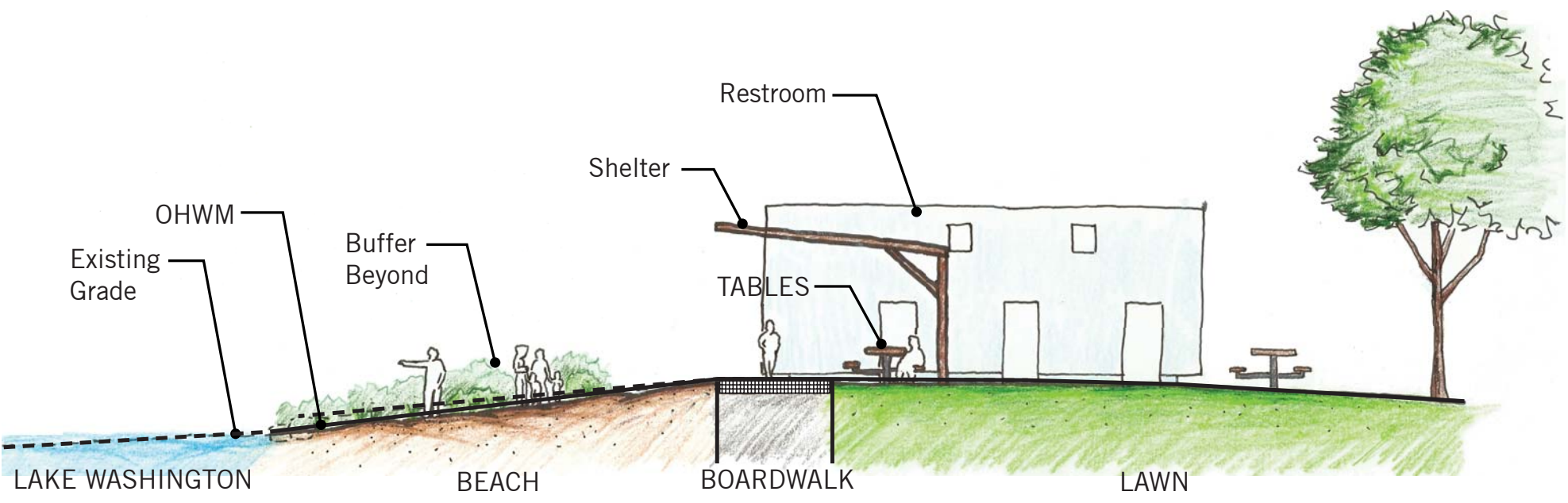


BE'ER SHEVA PARK IMPROVEMENTS

March 3, 2018



CONCEPT 2 - SECTION



BE'ER SHEVA PARK IMPROVEMENTS

March 3, 2018



CONCEPT 2 - GATHERING DIAGRAM



BE'ER SHEVA PARK IMPROVEMENTS

March 3, 2018



CONCEPT 2 - INSPIRATIONAL IMAGERY

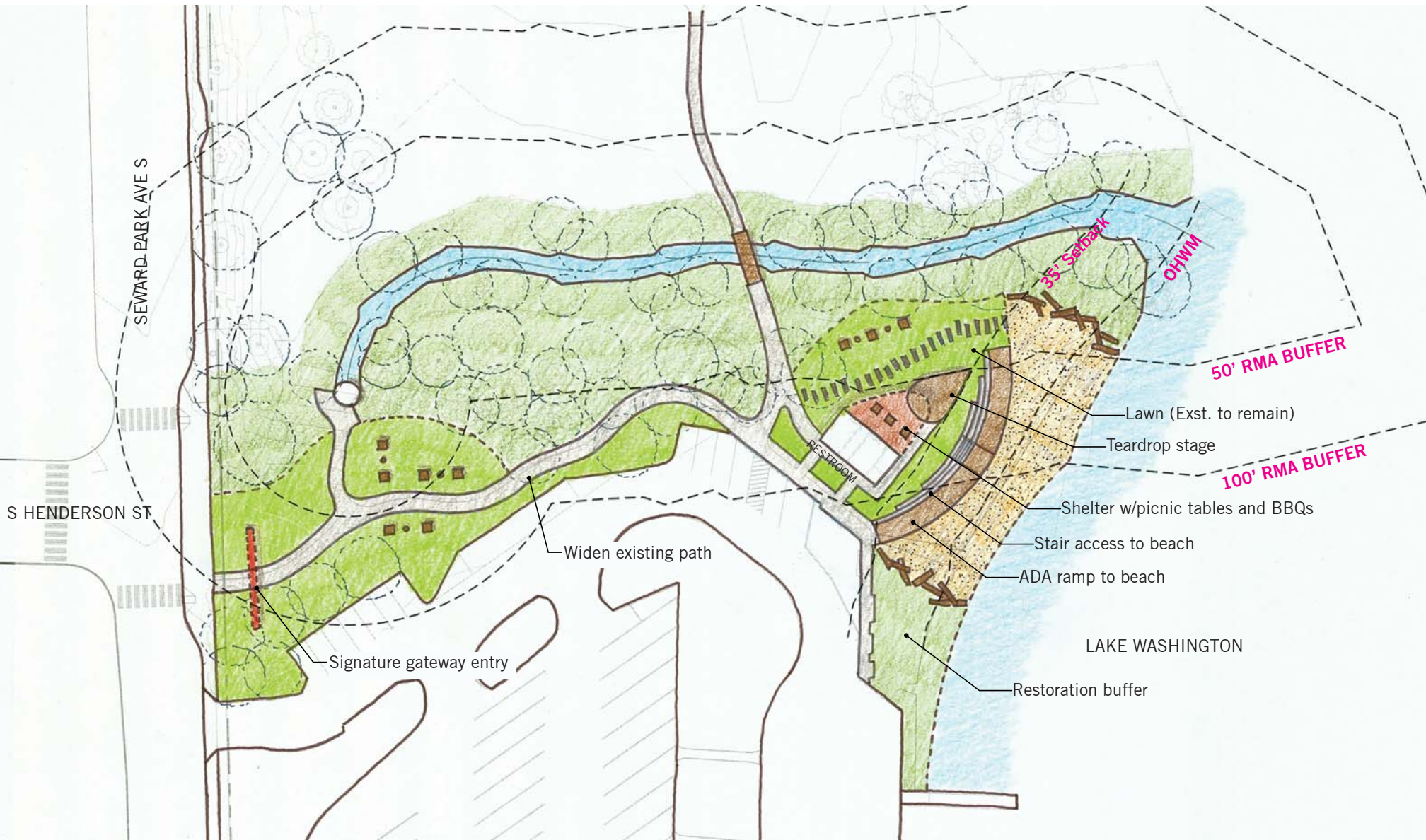


BE'ER SHEVA PARK IMPROVEMENTS

March 3, 2018



CONCEPT 3 - BEACH ACCESS

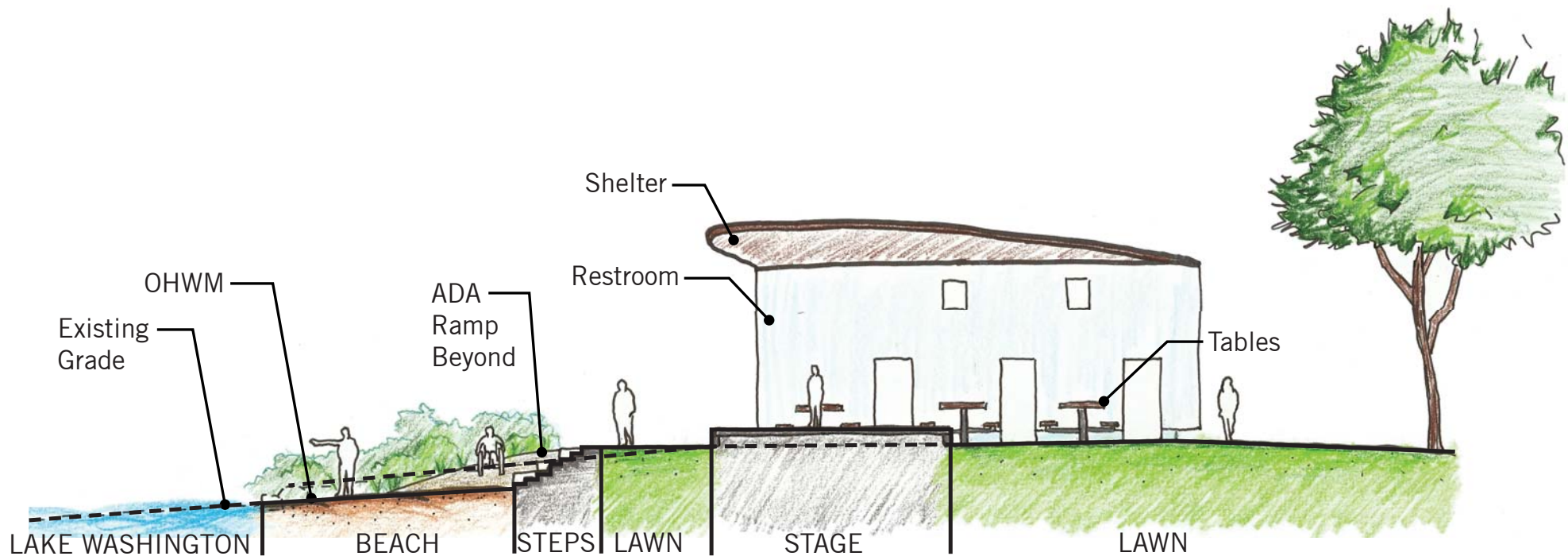


BE'ER SHEVA PARK IMPROVEMENTS

March 3, 2018



CONCEPT 3 - SECTION



BE'ER SHEVA PARK IMPROVEMENTS

March 3, 2018



CONCEPT 3 - GATHERING DIAGRAM



BE'ER SHEVA PARK IMPROVEMENTS

March 3, 2018



CONCEPT 3 - INSPIRATIONAL IMAGERY

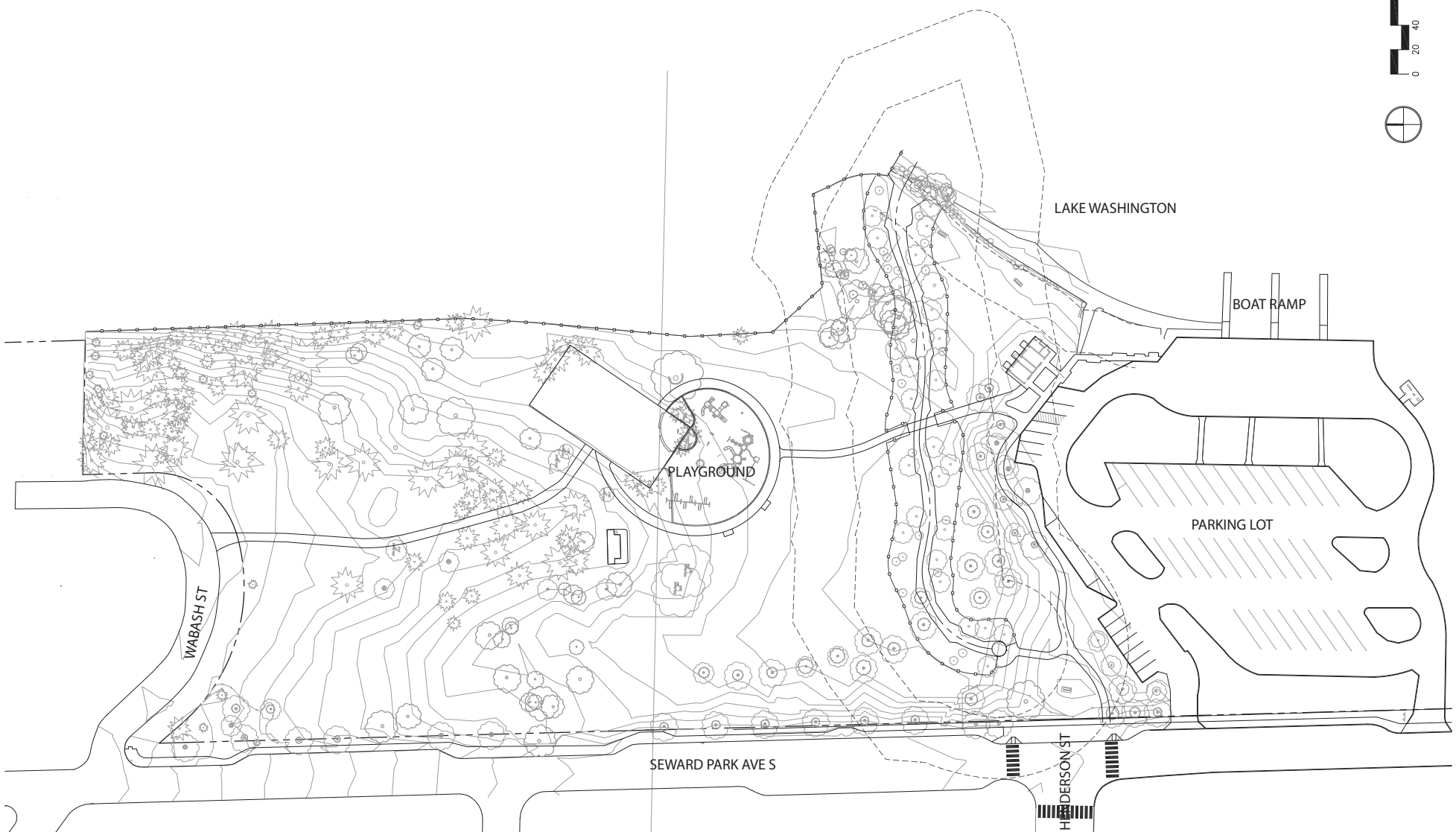


BE'ER SHEVA PARK IMPROVEMENTS

March 3, 2018



CONTEXT MAP



BE'ER SHEVA PARK IMPROVEMENTS

March 3, 2018

