

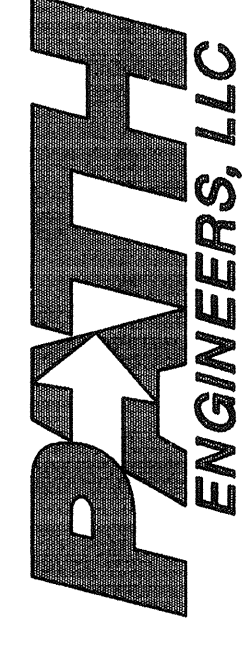


ARAI/JACKSON
Architects & Planners
1001 East John • Seattle, WA 98112
Tel: 206-325-8800 Fax: 206-325-8518

CONSTRUCTION DOCUMENTS

NO.	REVISION - AS BUILT	DATE
3	OWNER REVISIONS	5/11/03
2	PERMIT CORRECTIONS	7/15/02
1		

REVIEWED: PARK ENGINEER DATE
All work done in accordance with the City of Seattle Standard Plans and Specifications in effect on the date shown above, and approved by the City Engineer.



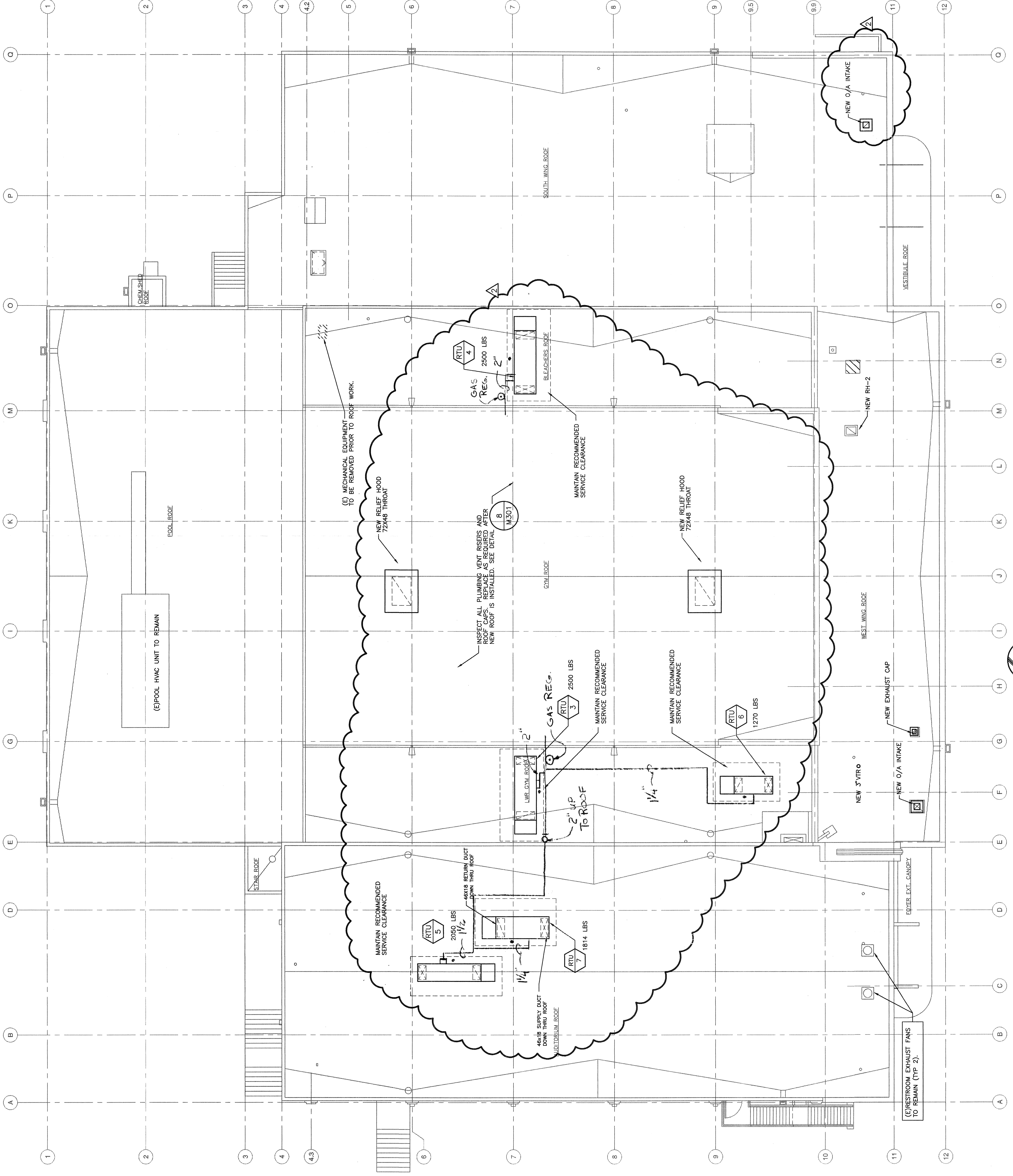
17928 BOTHELL EVERETT HWY SE, SUITE H
BOTHELL WASHINGTON 98012
(425) 481-7735 FAX (425) 481-7692

CONTACT: MIKE HENABY
JOB NUMBER: 003261

SAND POINT
MAGNUSON PARK
COMMUNITY RECREATION CENTER

MECHANICAL ROOF PLAN

DESIGNED	KWB	DATE	JUNE 11, 2003
DRAWN	CEA	DESIGN REVIEW	
CHECKED	REP		
ORDINANCE NO.	119812 & 119897	SHEET	56 OF 76
CONTRACT NO.	1616		
SCALE	1/8" = 1'-0"		



MECHANICAL ROOF PLAN - MECHANICAL

SCALE: 1/8" = 1'-0"

NORTH