



Seattle Industrial & Maritime Strategy

1

Citywide Advisory Group

Meeting #8
May 6, 2021

1

2

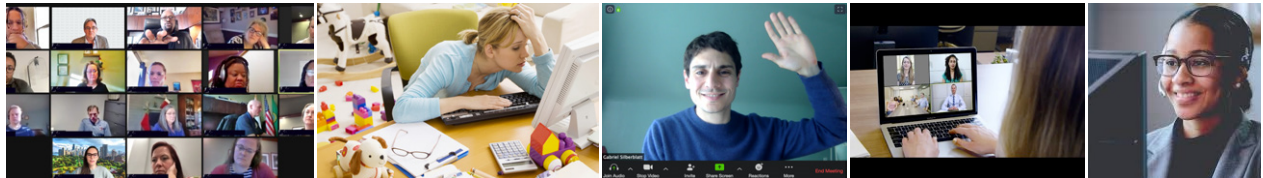
Virtual Meetings in the Age of COVID-19

Expectations

- Participate with **grace & humor**. People are juggling different demands. Children; pets; partners.
- **Ask for (and accept) help** from BDS team members. We want this to work for everyone.
- **Keep your camera turned on!** This makes a huge difference in nonverbal communication & facilitation.

Norms & Guidelines

- **Mute** your audio when you are not speaking.
- Be **explicit** and **animated** about **non-verbal communication**. Nodding; thumbs up; hand-raising.
- Minimize **distractions** and **be present** by putting away phones, closing unrelated work, closing the door, etc.
- Speak **deliberately**, use **good lighting**, test **audio** equipment.



2

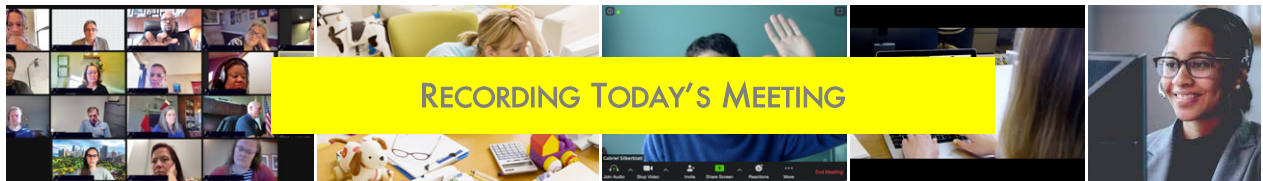
Virtual Meetings in the Age of COVID-19

Expectations

- Participate with **grace & humor**. People are juggling different demands. Children; pets; partners.
- **Ask for (and accept) help** from BDS team members. We want this to work for everyone.
- **Keep your camera turned on!** This makes a huge difference in nonverbal communication & facilitation.

Norms & Guidelines

- **Mute** your audio when you are not speaking.
- Be **explicit** and **animated** about **non-verbal communication**. Nodding; thumbs up; hand-raising.
- Minimize **distractions** and **be present** by putting away phones, closing unrelated work, closing the door, etc.
- Speak **deliberately**, use **good lighting**, test **audio** equipment.



Welcome

Adrienne Thompson
Director Mayor's Policy Office

Andrés Mantilla
Director,
Department of Neighborhoods

Rico Quirindongo
Interim Director, Office of
Planning & Community Development

Pamela Banks
Interim Director,
Office of Economic Development



Citywide Advisory Group

Sally Clark, co-chair
University of Washington

Nicole Grant, co-chair
MLK Labor

Brian Surratt, co-chair
Alexandria Real Estate Equities

**Commissioner
Stephanie Bowman**
Port of Seattle

Councilmember Dan Strauss
Seattle City Council

Alex Hudson
Transportation Choices Coalition

Barbara Nabors-Glass
Seattle Goodwill

Chad See
Freezer Longline Coalition

Charley Royer
Public Facilities District

Dave Gering
Manufacturing Industrial Council
of Seattle

Erin Adams
Seattle Made

Erin Goodman
SODO Business Improvement Area

Fred Mendoza
Public Stadium Authority

Fred Rivera
Seattle Mariners

Greg Smith
Urban Visions

Johan Hellman
BNSF

John Persak
International Longshore and
Warehouse Union

Jordan Royer
Pacific Merchant Shipping
Association

Marie Kurose
Workforce Development Council
of Seattle-King County

Mike Stewart
Ballard Alliance

Peter Nitze
Nitze-Stagen

Rick Kolpa
Prologis

Robb Stack
Stack Industrial Properties

Sam Farrazaino
Equinox Studios

Terri Mast
Inland Boatman's Union



Neighborhood Groups

Georgetown & South Park	SODO	Interbay	Ballard
Clint Berquist, <i>Georgetown Community Council</i>	Henry Liebman, <i>American Life</i>	Nathan Hartman, <i>Kerf Design</i>	Warren Aakervik, <i>Ballard Oil</i>
Roger Bialous, <i>Georgetown Brewing</i>	Kristal Fiser, <i>UPS</i>	Johan Hellman, <i>BNSF Railway</i>	Brad Benson, <i>Stoup Brewing</i>
Johnny Bianchi, <i>Industrial Space Seattle</i>	Erin Goodman, <i>SODO BIA</i>	Terri Mast, <i>Inland Boatman's Union</i>	Suzie Burke, <i>Fremont Dock Company</i>
Sam Farrazaino, <i>Equinox Studios</i>	Lisa Howard, <i>Alliance for Pioneer Square</i>	Chad See, <i>Freezer Longline Coalition</i>	Brent Lackey, <i>Ballard District Council</i>
Jon Holden, <i>Machinists Union 751</i>	Ron Judd, <i>WSDOT</i>	Jeff Thompson, <i>Freehold Group</i>	Angie Gerrald, <i>Ballard District Council</i>
Kevin Kelly, <i>Recology</i>	Brian Mannelly, <i>SSA Marine</i>	Charlie Costanzo, <i>American Waterways Operators</i>	Haley Keller, <i>Peddler Brewing</i>
Paulina Lopez, <i>Duwamish River Cleanup Coalition</i>	Fred Mendoza, <i>Public Stadium Authority</i>		Eric Nelson, <i>Nordic Heritage Museum</i>
Veronica Wade, <i>South Seattle College</i>	Mark Miller, <i>Macmillian-Piper</i>		Mike Stewart, <i>Ballard Alliance</i>
Elena Lamont, <i>Pioneer Human Services</i>	John Persak, <i>International Longshore & Warehouse Union</i>		Shaunie Wheeler, <i>Teamsters Joint Council</i>
Maria Ramirez, <i>Duwamish Valley Housing Coalition</i>	Fred Rivera, <i>Seattle Mariners</i>		Daniel Blanchard, <i>Seattle Maritime Academy</i>
	Maiko Winkler Chin, <i>Seattle Chinatown Int'l District PDA</i>		Russel Shrewsberry, <i>Western Towboat Company</i>
	Alex Cooley, <i>Solstice Grown</i>		
	Charles Royer, <i>Public Facilities District</i>		



7

Meeting Purpose

- Review revised 11 draft strategies
- Test consensus support for each strategy
- Test consensus support for the overall package
- Provide input for further refinement of recommendations



7

8

Meeting Purpose

- Review revised 11 draft strategies
- Test consensus support for each strategy
- Test consensus support for the overall package
- Provide input for further refinement of recommendations

"CHAT" FUNCTION:

- Seen by facilitators / host only
- Requests for technical help
- Comments to City (for later review)
 - Not for discussion



8

Meeting Purpose

- Review revised 11 draft strategies
- Test consensus support for each strategy
- Test consensus support for the overall package
- Provide input for further refinement of recommendations

CITYWIDE & NEIGHBORHOOD GROUPS ONLY

2 Interactive Exercises (later in the meeting) will be much easier on a computer than a mobile device.



Meeting Purpose

- Review revised 11 draft strategies
- Test consensus support for each
- Test consensus support for the overall package
- Provide input for further refinement of recommendations

POSSIBLE MODIFICATIONS OF PROPOSED STRATEGIES

Some process participants are interested in modifications to the latest Draft Consensus Recommendations.

We can consider possible modifications today, but if we do this, we need the group's agreement to allow the facilitator to wrap-up the discussion and direct voting at an appropriate time.



Today's Agenda



- Welcome & Introductions
- **Process Update**
 - Mayor's Principles
 - Process Recap & Steps to Completion
 - Meeting Structure & Ground Rules
- Consensus Framework
 - Presentation (10 mins.)
 - Discussion (10 mins.)
- Draft Strategies
 - Presentation (20 minutes)
 - Discussion (30 minutes)
- Straw Polls
 - #1: Levels of Support for Each Strategy (10 minutes)
 - #2: Up or Down on the Whole Package (5 minutes)
 - Discussion (15 minutes)
- Wrap-up & Next Steps



11

Mayor Durkan's Principles

- A. Use the power of **local workers** and **companies** to chart a blueprint for the future using the principles of **restorative economics** to support the cultural, economic, and political power of communities most impacted by **economic and racial inequities**
- B. Strengthen and grow Seattle's **industrial and maritime sectors** so **communities that have been excluded** from the prosperity of our region can benefit from our future growth
- C. Promote **equitable access** to **high quality, family-wage jobs** and **entrepreneurship for Black, Indigenous, and People of Color** through an **inclusive** industrial economy and **ladders** of economic opportunity
- D. Improve the **movement of people and goods** to and within industrial zones and increases **safety** for all travel modes
- E. Align Seattle's industrial and maritime strategy with key **climate** and **environmental protection** goals
- F. Develop a **proactive land use policy** agenda that harnesses growth and economic opportunities to ensure **innovation** and **industrial jobs** are a robust part of our future economy that is inclusive of **emerging industries** and supportive of **diverse entrepreneurship**



12

13

Procedures

Ground Rules	Responsibilities		Working Consensus
<ul style="list-style-type: none"> • Everyone's voice counts <ul style="list-style-type: none"> – Take turns – Each perspective is valid – Listen respectfully – Questions are okay • Forward movement • Positive recommendations 	<ul style="list-style-type: none"> • Participate regularly & on-time • Positive communication • Represent your perspective • Acknowledge any conflicts of interest 	<ul style="list-style-type: none"> • Leverage resources & information • Advocate for recommendations • Institutional knowledge • Conduit of information 	<ul style="list-style-type: none"> • Everyone gets their say • Recommendations you can "live with" • If we must vote: 80% = consensus (in attendance)








13

14

Procedures

Ground Rules	Responsibilities		Working Consensus
<ul style="list-style-type: none"> • Everyone's voice counts <ul style="list-style-type: none"> – Take turns – Each perspective is valid – Listen respectfully – Questions are okay • Forward movement • Positive recommendations 	<ul style="list-style-type: none"> • Participate regularly & on-time • Positive communication • Represent your perspective • Acknowledge any conflicts of interest 	<ul style="list-style-type: none"> • Leverage resources & information • Advocate for recommendations • Institutional knowledge • Conduit of information 	<ul style="list-style-type: none"> • Everyone gets their say • Recommendations you can "live with" • If we must vote: 80% = consensus (in attendance)

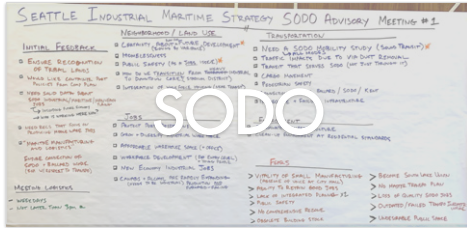
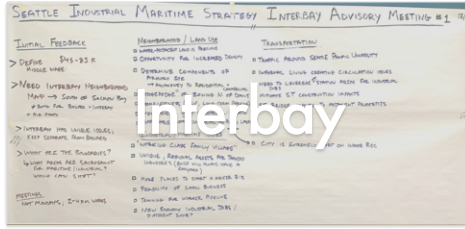







14

Neighborhood Issues & Visions



Neighborhood Issues

Georgetown & South Park ...

- Affordable workforce housing
- Pathways for training into industrial jobs
- Environmental equity + pollution mitigation

SODO ...

- Public safety as a jobs issue
- Transit access within SODO
- Improve cargo movement (Ballard ↔ SODO ↔ Kent)
- Pedestrian safety

Interbay ...

- Protection of land with water adjacency for industrial use
- Clarify intention for area north of Dravus St.
- Sound Transit alignment
- Incubate and support small maker businesses

Ballard ...

- Industry friendly Sound Transit alignment
- Manage conflicts arising from growth pressure (RVs and tent camping)
- Protect zoning within MIC
- Apprenticeship programs for worker pipeline



Neighborhood Vision Elements: In 20 years...

Georgetown & South Park ...

- **Dense**
- **Sustainable** industrial economy
- **Diverse** and **skilled** workforce
- Living **locally**
- **Healthy** environment

Interbay ...

- Maritime and industrial **innovation**
- Modernized **working waterfront**
- Dynamic **inland** areas:
ecosystem of maritime and industrial jobs **coexist** with housing and services for workers

SODO ...

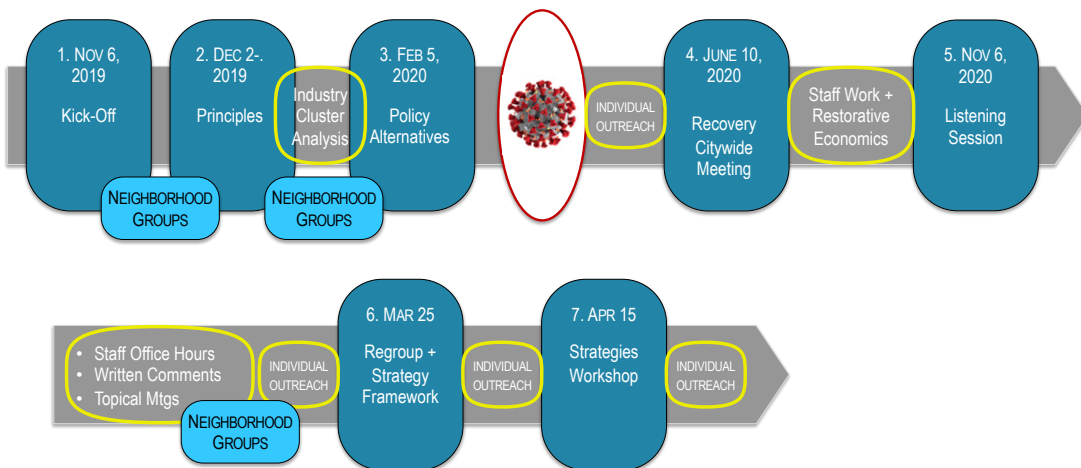
- Thriving **manufacturing, maritime, logistics**
- Protected **working waterfront**
- Intentional **transition** between worker housing and production jobs
- Connected by **Transit**

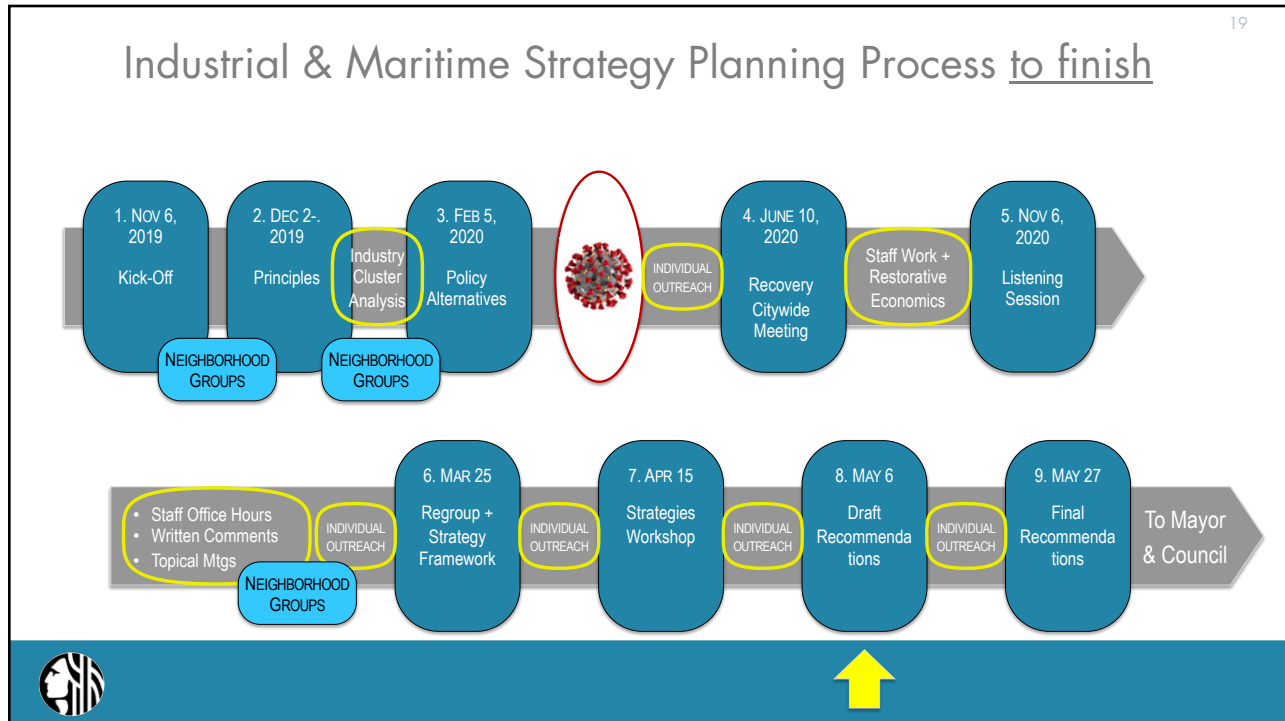
Ballard ...

- Celebration of the **value** and **heritage** of industrial and maritime work
- Diversifying **mix** of maritime and production businesses **complement** and **sustain** each other



Industrial & Maritime Strategy Planning Process to date





19

- ## Opportunities for Implementation
- THIS YEAR —
- Annual Comprehensive Plan Update
 - Land Use Legislation for Stronger Protections for Industrially Zoned Land
 - Launch an Environmental Impact Statement (EIS) for zoning update
 - Administrative Actions and City Budget
 - Ongoing Stewardship Group
- 20

20

21

Timeline: this year

Timing	Action
Early June	Publish the Industrial / Maritime Strategy Report Consensus recommendations and supporting material.
June	Update Comprehensive Plan Publish annual comprehensive plan amendments to update industrial lands policies. Council action likely in September.
June	Launch Environmental Impact Statement (EIS) Begin detailed study of impacts for the consensus land use concepts. <u>Draft EIS ready for public comment by November or December.</u>
June	Freight Master Plan Implementation Develop implementation strategy for the freight master plan. Conclude in December.
July	Identify Stewardship Group(s) Identify and grow ongoing stewardship entities to champion the vision of the Industrial and Maritime Strategy .
Fall	Budget Priorities Mayor's budget submittal with investments guided by consensus framework, including workforce investments in industrial / maritime.
Aug	Legislation to Close Zoning Loopholes Narrow, focused changes to disallow unintended non-industrial development.




21

22

Timeline: mid- to long-term

Timing	Action
Feb / Mar 2022	Final EIS Publish a final analysis, which could include a recommended preferred alternative.
Fall 2022	Full-Scale Zoning Changes Council process to make map and zoning code changes.
2022 - 2024	Initiate Armory Site and WOSCA Site Master Plans Partner with State, Port, Sound Transit and Stewardship Group, and community partners to establish the structure and process for detailed property reuse master plans.



22

Potential Strategies

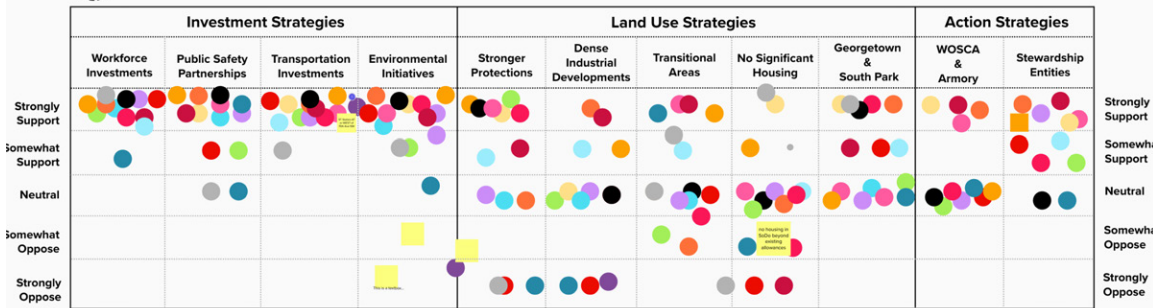
Investment Strategies	Land Use Strategies	Action Strategies
1. WORKFORCE INVESTMENTS	5. STRONGER PROTECTIONS	10. WOSCA & ARMORY
2. PUBLIC SAFETY PARTNERSHIPS	6. DENSE INDUSTRIAL DEVELOPMENT	11. STEWARDSHIP ENTITIES
3. TRANSPORTATION INVESTMENTS	7. HEALTHY TRANSITIONAL AREAS	
4. ENVIRONMENTAL INITIATIVES	8. NO SIGNIFICANT HOUSING	
	9. GEORGETOWN & SOUTH PARK	



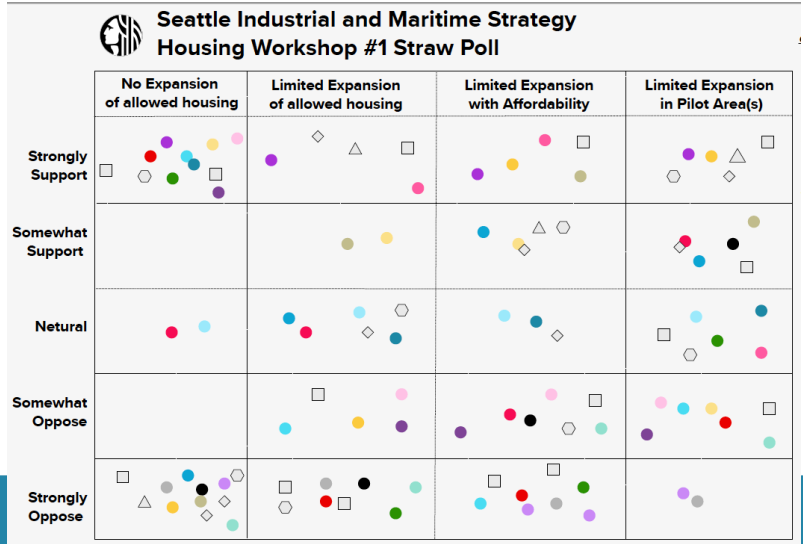
March 25 Feedback



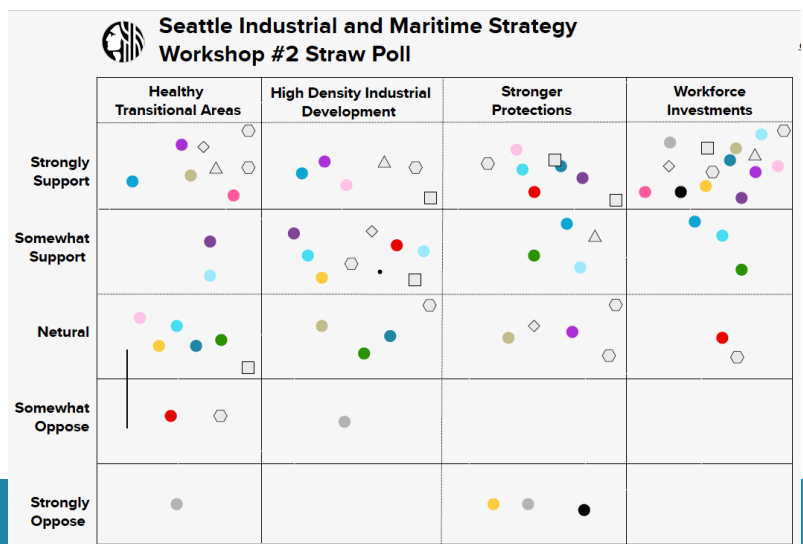
Seattle Industrial and Maritime Strategy/Potential Strategies

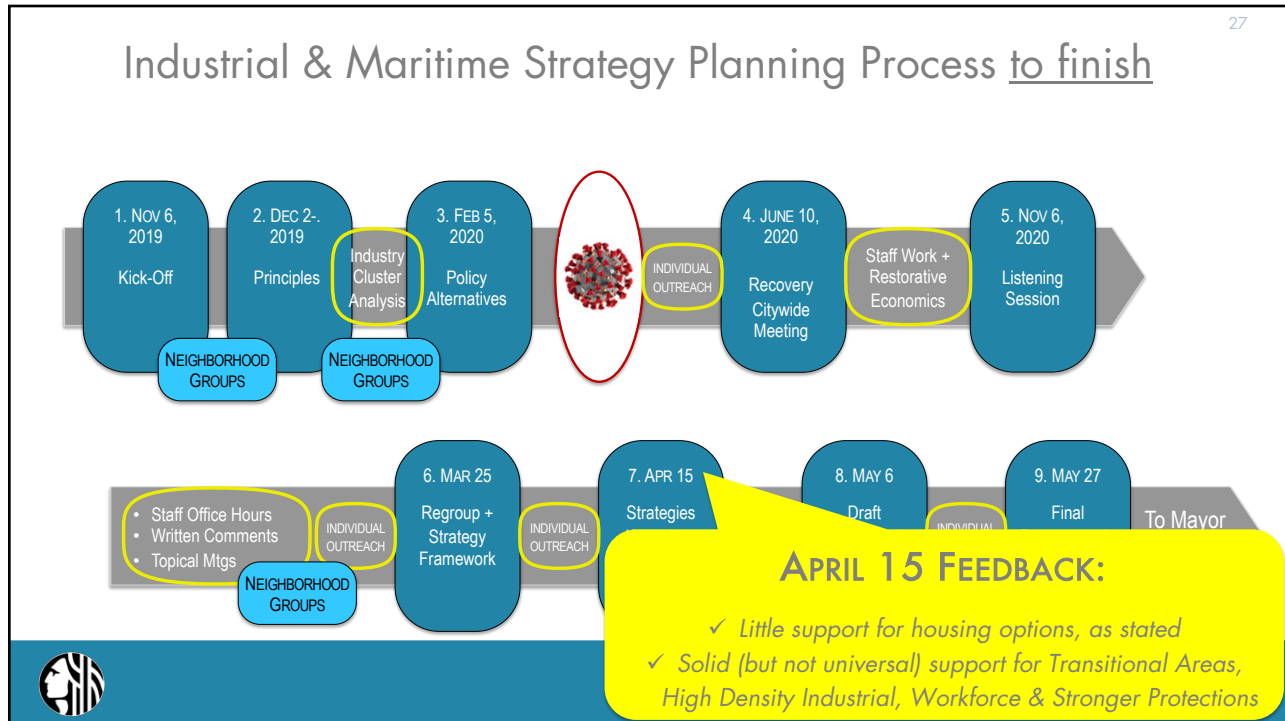


April 15 Feedback



April 15 Feedback





27

Today's Agenda

- Welcome & Introductions
- Process Update .
 - Mayor's Principles
 - Process Recap & Steps to Completion
 - Meeting Structure & Ground Rules
- **Consensus Framework**
 - Presentation (10 mins.)
 - Discussion (10 mins.)
- Draft Strategies
 - Presentation (20 minutes)
 - Discussion (30 minutes)
- Straw Polls
 - #1: Levels of Support for Each Strategy (10 minutes)
 - #2: Up or Down on the Whole Package (5 minutes)
 - Discussion (15 minutes)
- Wrap-up & Next Steps

28

Consensus Framework

Ground Rules

- Citywide & Neighborhood Group members are invited to join the discussion and vote on recommendations
- Priority to Citywide members

Final Recommendation (May 27)

- Citywide Group
- Overall package of recommendations
- 80% of those present & voting



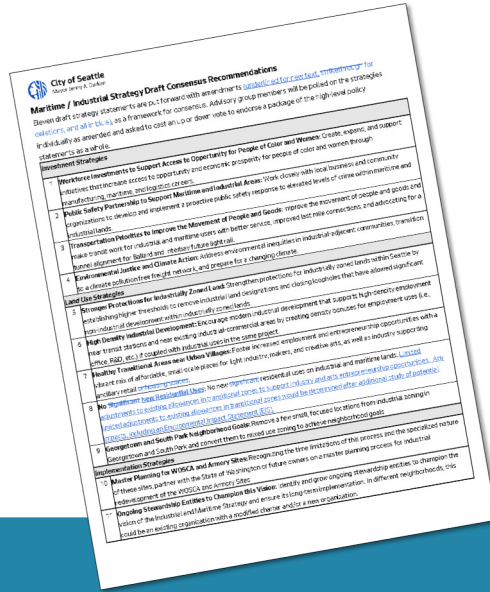
Today's Agenda



- Welcome & Introductions
- Process Update .
 - Mayor's Principles
 - Process Recap & Steps to Completion
 - Meeting Structure & Ground Rules
- Consensus Framework
 - Presentation (10 mins.)
 - Discussion (10 mins.)
- **Draft Strategies**
 - Presentation (20 minutes)
 - Discussion (30 minutes)
- Straw Polls
 - #1: Levels of Support for Each Strategy (10 minutes)
 - #2: Up or Down on the Whole Package (5 minutes)
 - Discussion (15 minutes)
- Wrap-up & Next Steps



Draft Consensus Recommendations



Potential Strategies

Investment Strategies	Land Use Strategies	Action Strategies
1. WORKFORCE INVESTMENTS	5. STRONGER PROTECTIONS	10. WOSCA & ARMORY
2. PUBLIC SAFETY PARTNERSHIPS	6. DENSE INDUSTRIAL DEVELOPMENT	11. STEWARDSHIP ENTITIES
3. TRANSPORTATION PRIORITIES	7. HEALTHY TRANSITIONAL AREAS	
4. ENVIRONMENTAL INITIATIVES	8. NO SIGNIFICANT HOUSING	
	9. GEORGETOWN & SOUTH PARK	



33

Potential Strategies

Investment Strategies	Land Use Strategies	Action Strategies
1. WORKFORCE INVESTMENTS	5. STRONGER PROTECTIONS	10. WOSCA & ARMORY
2. PUBLIC SAFETY PARTNERSHIPS	6. DENSE INDUSTRIAL DEVELOPMENT	11. STEWARDSHIP ENTITIES
3. TRANSPORTATION PRIORITIES	7. HEALTHY TRANSITIONAL AREAS	
4. ENVIRONMENTAL INITIATIVES	8. NO SIGNIFICANT HOUSING	
	9. GEORGETOWN & SOUTH PARK	



33

34

Draft Consensus Strategies

Investment Strategies	Land Use Strategies	Action Strategies
1. WORKFORCE INVESTMENTS	5. STRONGER PROTECTIONS	10. WOSCA & ARMORY
2. PUBLIC SAFETY PARTNERSHIPS	6. DENSE INDUSTRIAL DEVELOPMENT	11. STEWARDSHIP ENTITIES
3. TRANSPORTATION PRIORITIES	7. HEALTHY TRANSITIONAL AREAS	
4. ENVIRONMENTAL INITIATIVES	8. NO NEW RESIDENTIAL USES	
	9. GEORGETOWN & SOUTH PARK	



34

35

Investment Strategies

1. **WORKFORCE INVESTMENTS**
to support access to opportunities for people of color and women
2. **PUBLIC SAFETY PARTNERSHIPS**
to support maritime and industrial areas
3. **TRANSPORTATION PRIORITIES**
to improve the movement of people and goods
4. **ENVIRONMENTAL INITIATIVES**
to advance environmental justice and climate action



35

36

1. WORKFORCE INVESTMENTS

to support access to opportunities for people of color and women



Create, expand, and support initiatives that increase access to opportunity and economic prosperity for people of color and women through manufacturing, maritime, and logistics careers.



36

37

2. PUBLIC SAFETY PARTNERSHIPS

to Support Maritime and Industrial Areas



Work closely with local business and community organizations to develop and implement a proactive public safety response to elevated levels of crime within maritime and industrial lands



37

38

3. TRANSPORTATION PRIORITIES

to Improve the Movement of People and Goods



Improve the movement of people and goods and make transit work for industrial and maritime users with better service, improved last mile connections, and advocating for a tunnel alignment for Ballard and Interbay future light rail.



38

39

4. ENVIRONMENTAL STRATEGIES

to Improve Environmental Justice and Climate Action



Address environmental inequities in industrial-adjacent communities, transition to a climate pollution free freight network, and prepare for a changing climate.



39

40

Land Use Strategies

5. STRONGER PROTECTIONS for industrially zoned land
6. HIGH DENSITY INDUSTRIAL DEVELOPMENT to support transit
7. HEALTHY TRANSITIONAL AREAS near Urban Villages
8. NO NEW RESIDENTIAL USES on Industrial & Maritime lands
9. GEORGETOWN & SOUTH PARK neighborhood goals



40

Industrial & Maritime Land Challenges

41



- Piecemeal land removal from industrial and maritime areas
- Loopholes in zoning allow box retail, mini-storage, etc.
- Speculative pressures increase land prices, undermining the competitiveness of manufacturing, maritime, and logistics uses



41

Employment Density Challenges

42



- Not enough employment density near light rail to support transit use
- Redevelopment costs are very expensive
- Developments that can bear costs are most frequently non-industrial



42

43

Transition Area Challenges



- Affordable spaces for small-scale artists and manufacturers are scarce
- Pedestrians and bicyclists are vulnerable to conflicts with freight movements
- Entrepreneurs and small manufacturers struggle to find affordable homes near their jobs



43

44

Housing Challenges for Industrial & Maritime Sectors



- Affordable homes for manufacturing, maritime, and logistics workers and entrepreneurs
- Risks of exposure to environmental hazards
- Resident complaints imperil industrial uses
- Personal vehicle trips can conflict with freight movement



44

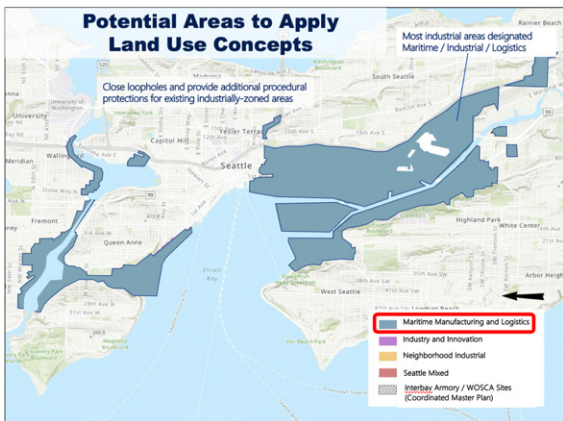
Georgetown & South Park Challenges



- Some industrially zoned sections of Georgetown and South Park are no longer serving an industrial purpose
- This outdated zoning impedes progress towards neighborhood goals



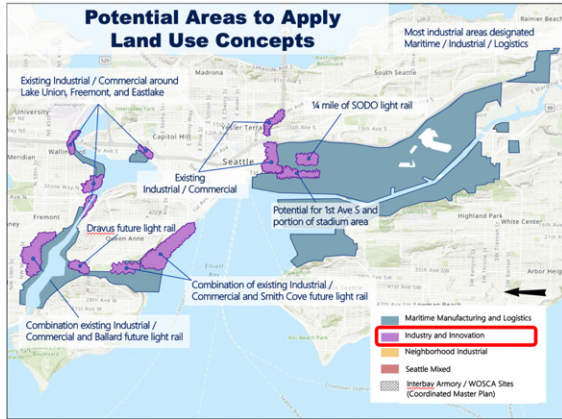
5. STRONGER PROTECTIONS for Industrially Zoned Land



Strengthen protections for industrially zoned lands within Seattle by establishing higher thresholds to remove industrial land designations and closing loopholes that have allowed significant non-industrial development within industrially zoned lands.



6. HIGH DENSITY INDUSTRIAL DEVELOPMENT to support transit



Encourage modern industrial development that supports high-density employment near transit stations and near existing industrial-commercial areas by creating density bonuses for employment uses (i.e., office, R&D, etc.) if coupled with industrial uses in the same project.



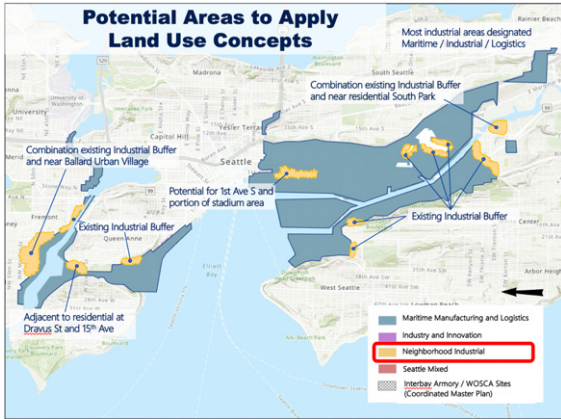
7. HEALTHY TRANSITIONAL AREAS near Urban Villages



Foster increased employment and entrepreneurship opportunities with a vibrant mix of affordable, small-scale places for light industry, makers, and creative arts, as well as industry supporting ancillary retail.



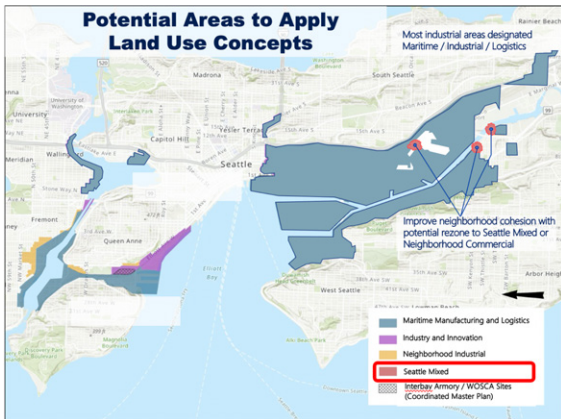
8. NO NEW RESIDENTIAL USES on industrial and maritime lands



Limited adjustments to existing allowances in transitional zones to support industry and arts entrepreneurship opportunities. Any limited adjustments to existing allowances in transitional zones would be determined after additional study of potential impacts, including an Environmental Impact Statement (EIS).



9. GEORGETOWN AND SOUTH PARK Neighborhood Goals



Remove a few small, focused locations from industrial zoning in Georgetown and South Park and convert them to mixed use zoning to achieve neighborhood goals.



51

8. Residential Adjustments – Details



51

52

Existing Housing in Industrial Areas

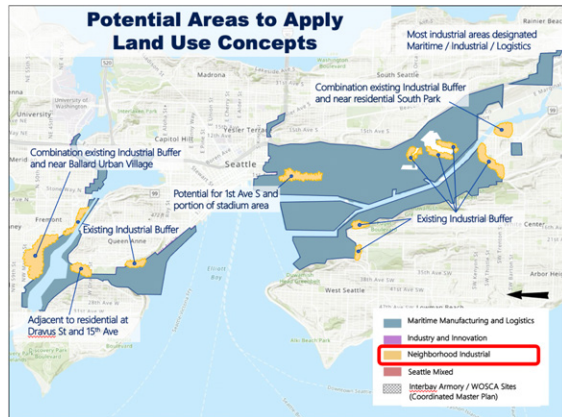


- About **400 units**, mostly non-conforming houses & multi-family structures
- **39 caretakers' quarters**, split between Duwamish MIC & BINMIC



52

Geographical Limit



- **No new residential** except adjacent to existing urban villages or residential populations
- These are transitional areas, currently labeled, “Neighborhood Industrial”



Modification of Artists / Studio Housing



- Not only artists, but also **residents who are engaged in production**, such as brewing, machining, woodworking, sewing/textile production, baking/catering, etc.
- **New construction** allowed
- Additional restrictions:
 - Must have a business license
 - 50% of unit in production / workspace
 - Does not displace industrial use



55

Modification of Caretakers Quarters



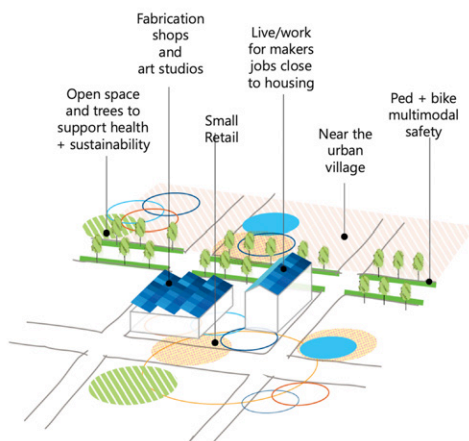
- Allow additional on-site employees quarters, more flexibility in location and number



55

56

Possible Additional Limits



- Maximum **residential density** (units/acre and/or % of floor area)
- **Affordability** requirement
- Rigorous **enforcement**
- Potential **pilot area(s)**



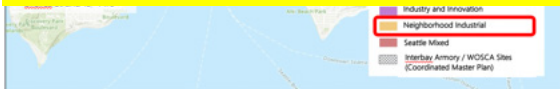
56

Potential Impacts



Potential Impacts

**Rough, order-of-magnitude estimate only.
 Actuality will depend on
 Environmental Impact Statement
 & financial feasibility modeling**



Potential Impacts

Rough, order-of-magnitude estimate only.
 Actuality will depend on
 Environmental Impact Statement
 & financial feasibility modeling



* Estimates based on initial scan of potentially redevelopable parcels.
 Low end estimates assume max 25 units/acre with 25% uptake.
 High end estimates 50 units/acre max with 60% uptake.



Potential Impacts



Ballard

- IB-zoned area: **100 – 400**
- IG-zoned area / 14th Ave.: **100 – 500**

Georgetown: 50 – 250

South Park: 50 – 250

Interbay: 10 – 50*

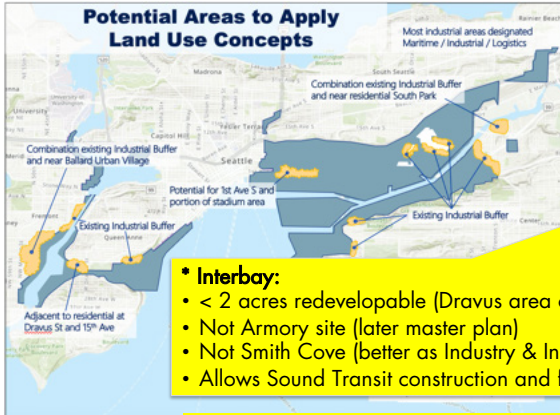
Stadium

- Existing overlay: **150 – 450**
- 1st Ave. S. extension to Starbucks: **100 – 250**

* Estimates based on initial scan of potentially redevelopable parcels.
 Low end estimates assume max 25 units/acre with 25% uptake.
 High end estimates 50 units/acre max with 60% uptake.



Potential Impacts



- * Interbay:**
 - < 2 acres redevelopable (Dravus area only)
 - Not Armory site (later master plan)
 - Not Smith Cove (better as Industry & Innovation)
 - Allows Sound Transit construction and future station

Ballard

- IB-zoned area: **100 – 400**
- IG-zoned area / 14th Ave.: **100 – 500**

Georgetown: 50 – 250

South Park: 50 – 250

Interbay: 10 – 50*

Stadium

- Stadium overlay: **150 – 450**
- e. S. extension to Starbucks: **100 – 250**

* Estimates based on initial scan of potentially redevelopable parcels.
 Low end estimates assume max 25 units/acre with 25% uptake.
 High end estimates 50 units/acre max with 60% uptake.



Action Strategies

10. WOSCA AND ARMORY SITES Master Planning

11. ONGOING STEWARDSHIP ENTITIES to Champion this Vision



10. WOSCA & ARMORY SITES Master Planning



WOSCA



Armory

Recognizing the time limitations of this process and the specialized nature of these sites, partner with the State of Washington or future owners on a master planning process for industrial redevelopment of the WOSCA and Armory Sites.



11. ONGOING STEWARDSHIP ENTITIES to Champion this Vision



Identify and grow ongoing stewardship entities to champion the vision of the Industrial and Maritime Strategy and ensure its long-term implementation. In different neighborhoods, this could be an existing organization with a modified charter and/or a new organization.

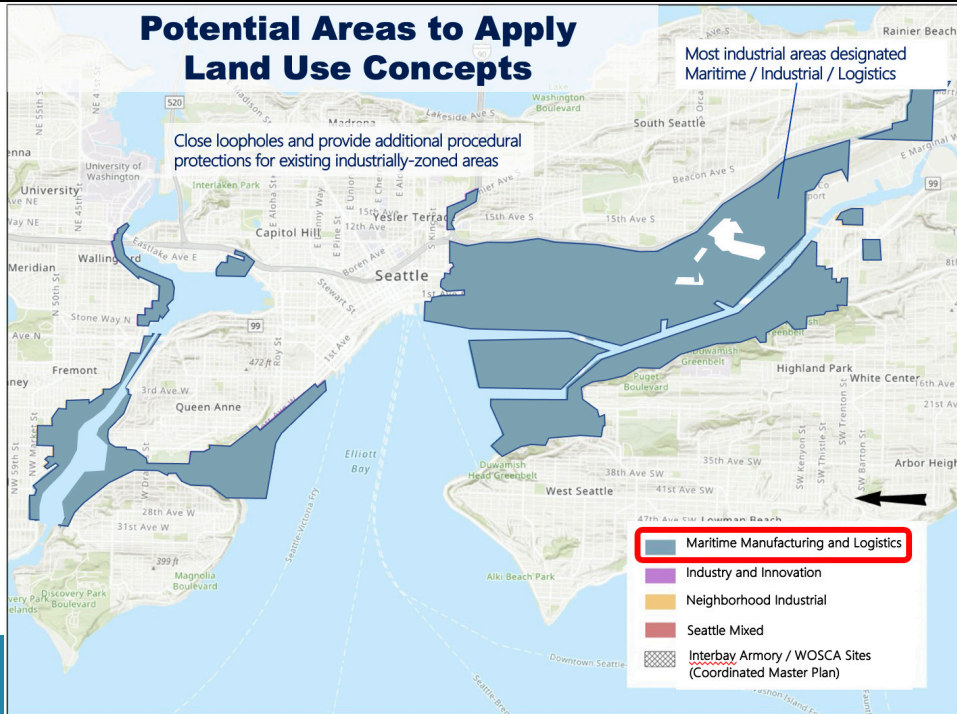


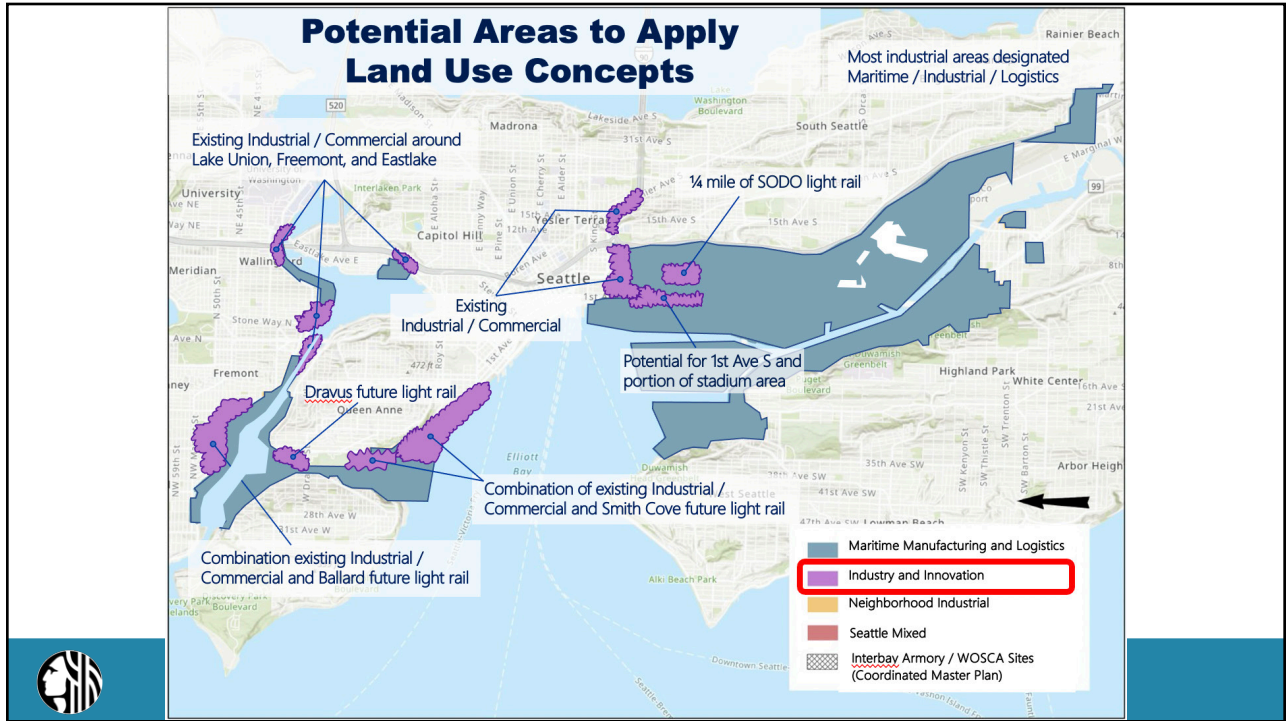
Draft Consensus Strategies

Investment Strategies	Land Use Strategies	Action Strategies
1. WORKFORCE INVESTMENTS	5. STRONGER PROTECTIONS	10. WOSCA & ARMORY
2. PUBLIC SAFETY PARTNERSHIPS	6. DENSE INDUSTRIAL DEVELOPMENT	11. STEWARDSHIP ENTITIES
3. TRANSPORTATION PRIORITIES	7. HEALTHY TRANSITIONAL AREAS	
4. ENVIRONMENTAL INITIATIVES	8. NO NEW RESIDENTIAL USES	
	9. GEORGETOWN & SOUTH PARK	

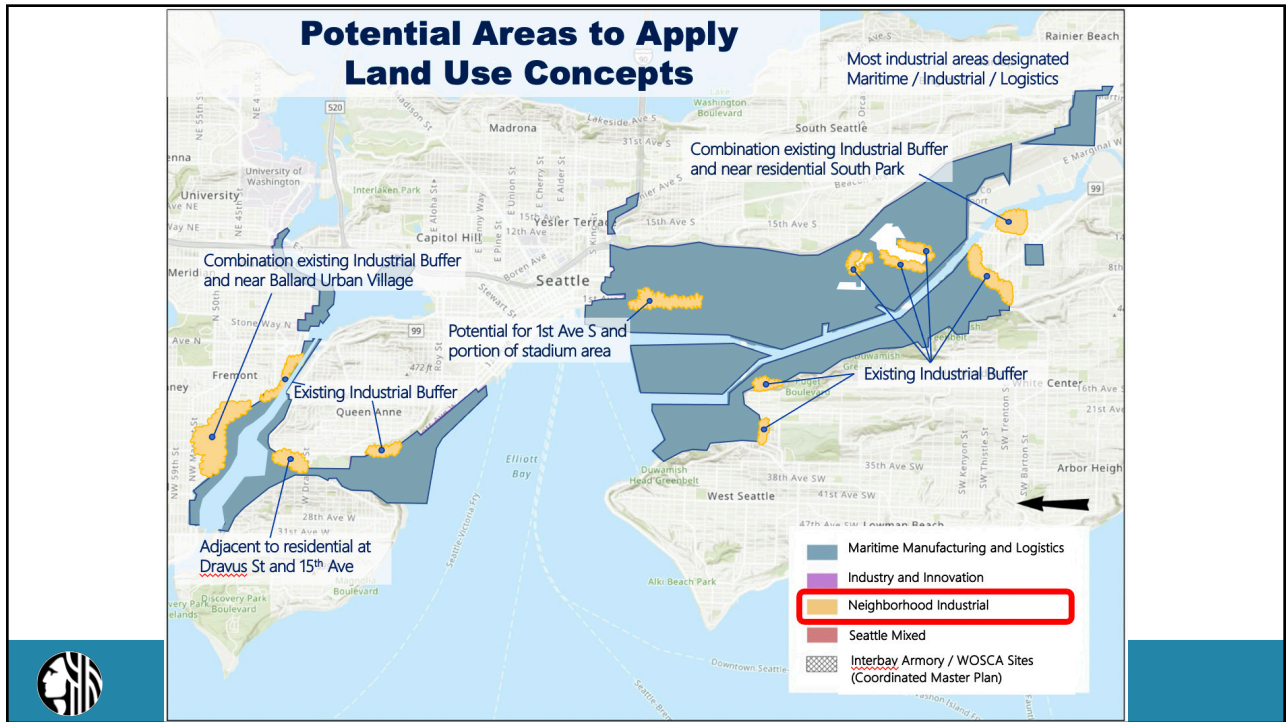


Potential Areas to Apply Land Use Concepts

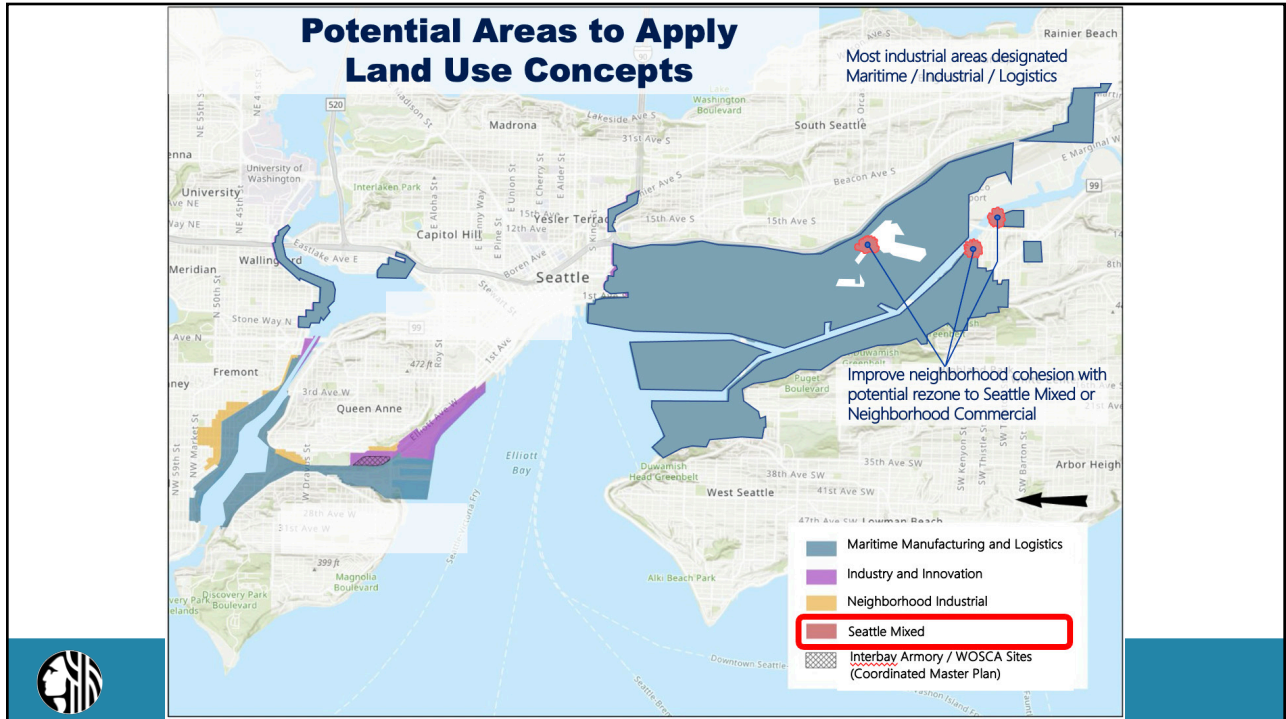




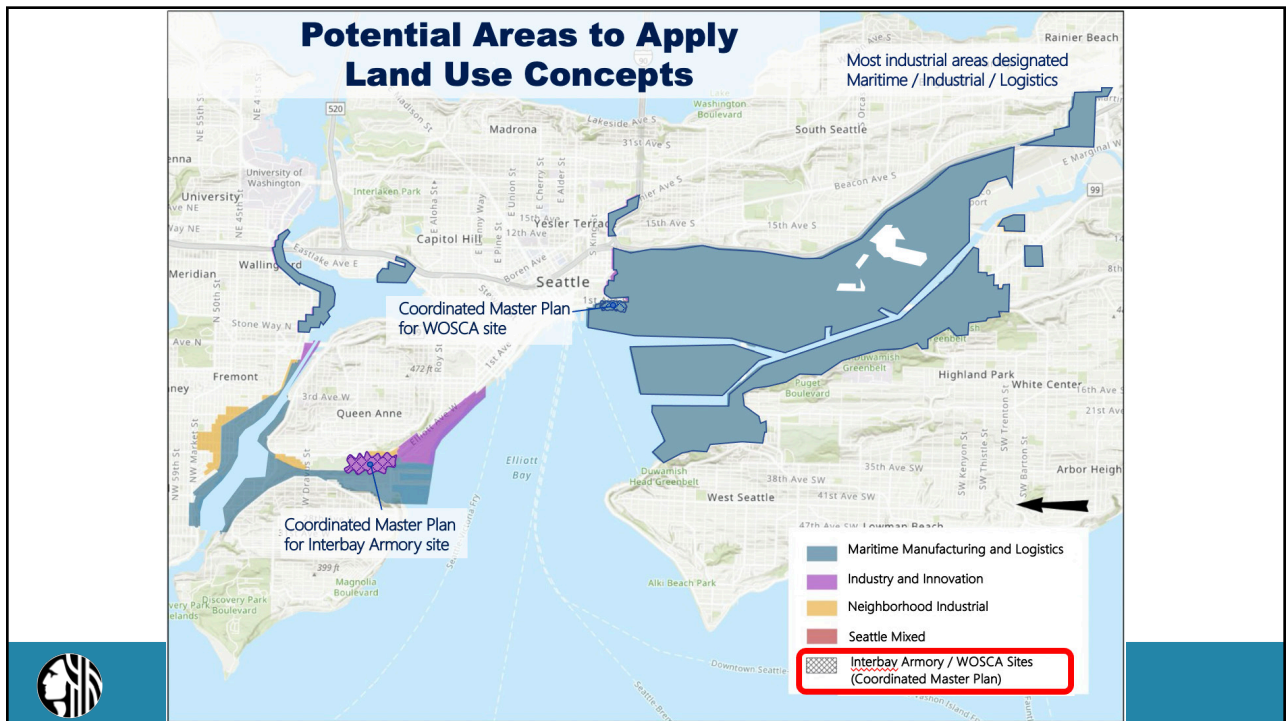
67



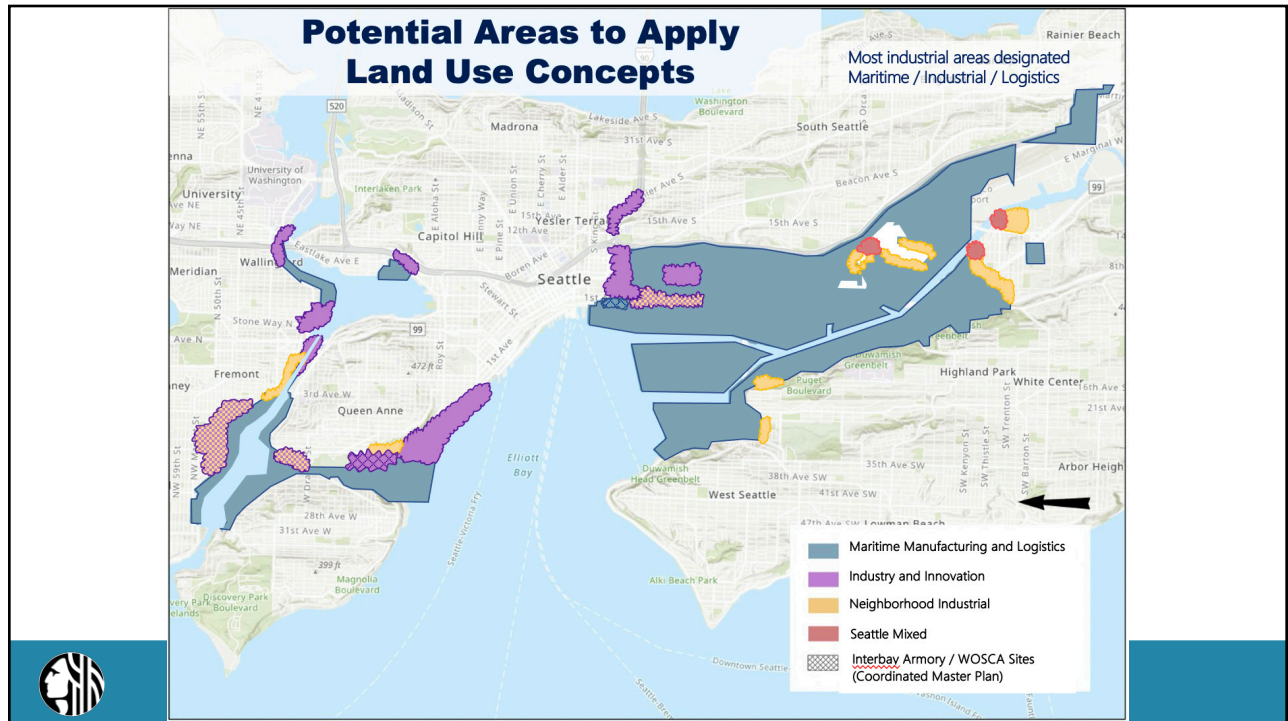
68



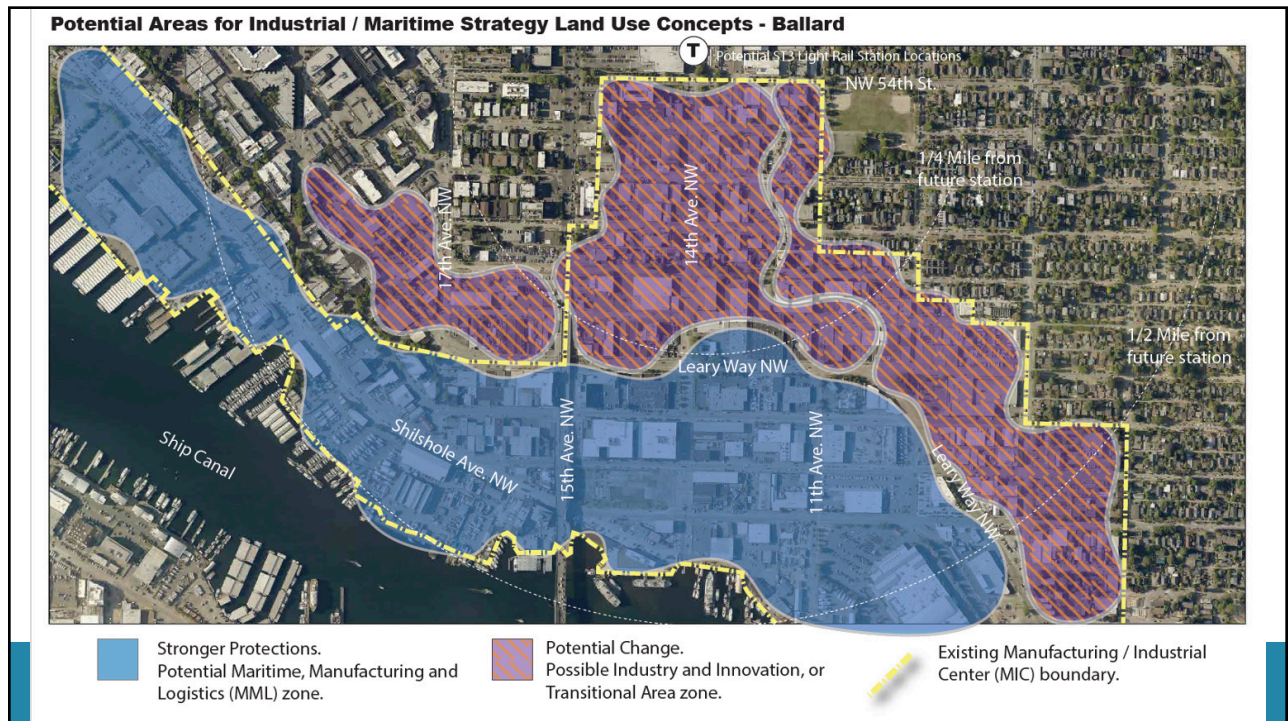
69



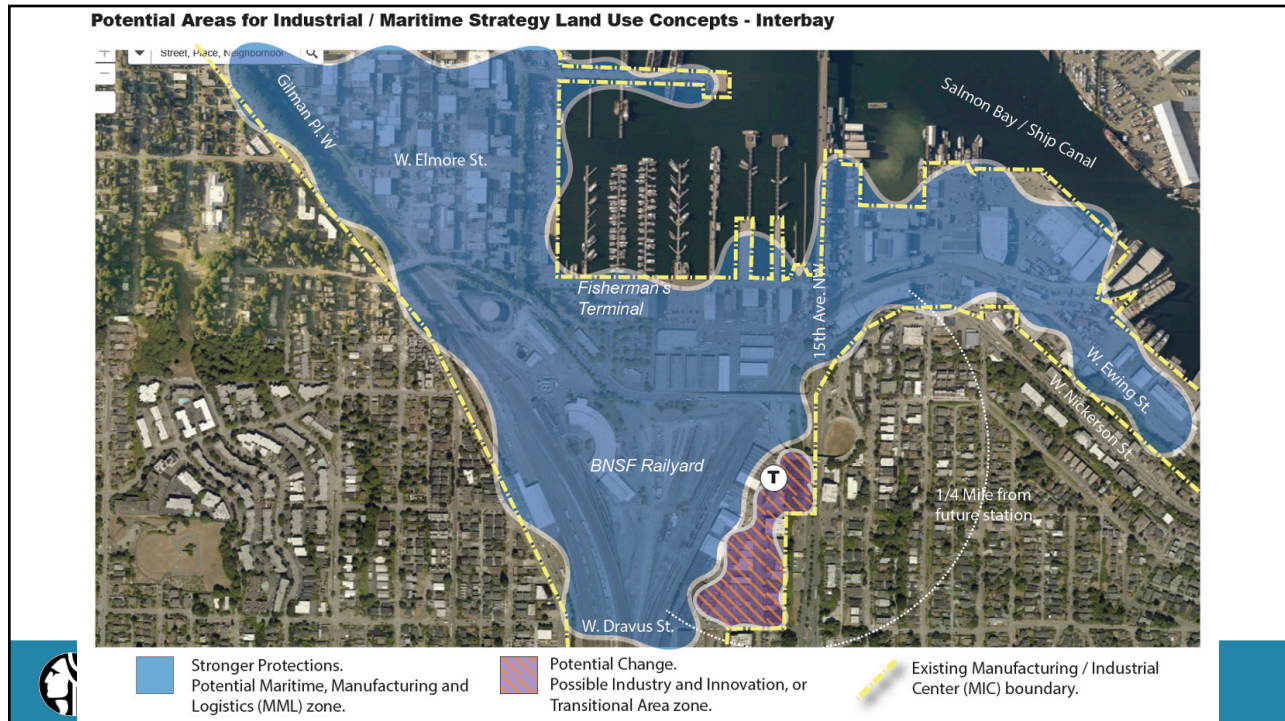
70



71




72




73

74

Today's Agenda



- Welcome & Introductions
- Process Update
 - Mayor's Principles
 - Process Recap & Steps to Completion
 - Meeting Structure & Ground Rules
- Consensus Framework
 - Presentation (10 mins.)
 - Discussion (10 mins.)
- Draft Strategies
 - Presentation (20 minutes)
 - Discussion (30 minutes)
- **Straw Polls**
 - #1: Levels of Support for Each Strategy (10 minutes)
 - #2: Up or Down on the Whole Package (5 minutes)
 - Discussion (15 minutes)
- Wrap-up & Next Steps



74

75

Draft Consensus Strategies

Investment Strategies	Land Use Strategies	Action Strategies
1. WORKFORCE INVESTMENTS	5. STRONGER PROTECTIONS	10. WOSCA & ARMORY
2. PUBLIC SAFETY PARTNERSHIPS	6. DENSE INDUSTRIAL DEVELOPMENT	11. STEWARDSHIP ENTITIES
3. TRANSPORTATION PRIORITIES	7. HEALTHY TRANSITIONAL AREAS	
4. ENVIRONMENTAL INITIATIVES	8. NO NEW RESIDENTIAL USES	
	9. GEORGETOWN & SOUTH PARK	



75

76

Draft Consensus Strategies

STRAW POLL #1

(Citywide & Neighborhood Group members only)

How do you feel about each strategy?

- A. Strong Support
- B. Cautious Support
- C. Neutral (need more information)
- D. Cautious Opposition
- E. Strong Opposition



76

Seattle Industrial and Maritime Strategy/Potential Strategies/Straw Poll #1

	Investment Strategies				Land Use Strategies				Action Strategies		
	Workforce Investments to Support Access to Opportunity for People of Color and Women	Public Safety Partnership to Support Maritime and Industrial Areas	Transportation Priorities to Improve the Movement of People and Goods	Environmental Justice and Climate Action	Stronger Protections for Industrially Zoned Land	High Density Industrial Development	Healthy Transitional Areas near Urban Villages	No use residential uses	Georgetown and South Park Neighborhood Goals	Master Planning for WOSCA and Armory Sites	Ongoing Stewardship Efforts to Champion this Vision
Strongly Support											
Somewhat Support											
Neutral											
Somewhat Oppose											
Strongly Oppose											

Sally Clark	●●●●●●●●●●●●	Dave Gering	●●●●●●●●●●●●	Marie Kurose	●●●●●●●●●●●●
Nichole Grant	●●●●●●●●●●●●	Erin Adams	●●●●●●●●●●●●	Mike Stewart	●●●●●●●●●●●●
Brian Surratt	●●●●●●●●●●●●	Erin Goodman	●●●●●●●●●●●●	Peter Nize	●●●●●●●●●●●●
Stephanie Bowman	●●●●●●●●●●●●	Fred Mendoza	●●●●●●●●●●●●	Rick Kolpa	●●●●●●●●●●●●
Dan Strauss	●●●●●●●●●●●●	Fred Rivera	●●●●●●●●●●●●	Robb Stack	●●●●●●●●●●●●
Alex Hudson	●●●●●●●●●●●●	Greg Smith	●●●●●●●●●●●●	Sam Farzadine	●●●●●●●●●●●●
Barbara Nebors-Glass	●●●●●●●●●●●●	John Helman	●●●●●●●●●●●●	Terri Mast	●●●●●●●●●●●●
Chad See	●●●●●●●●●●●●	John Persak	●●●●●●●●●●●●		
Charley Reyer	●●●●●●●●●●●●	Jordan Royer	●●●●●●●●●●●●		

Neighborhood Group

Ballard	Angie Gerrald	○○○○○○○○○○○○	Georgetown & South Park	Chris Bergquist	□□□□□□□□
	Brend Barnson	○○○○○○○○○○○○		Elena Lamont	□□□□□□□□
	Brent Lackey	○○○○○○○○○○○○		Johnny Bianchi	□□□□□□□□
	Daniel Blanchard	○○○○○○○○○○○○		Jon Holden	□□□□□□□□
	Eric Nelson	○○○○○○○○○○○○		Kevin Kelly	□□□□□□□□
	Haley Keller	○○○○○○○○○○○○		Maria Ramirez	□□□□□□□□
	Russel Shredsbury	○○○○○○○○○○○○		Paulina Lopez	□□□□□□□□
	Shauna Wheeler	○○○○○○○○○○○○		Roger Balous	□□□□□□□□
	Suzie Burke	○○○○○○○○○○○○		Veronica Wade	□□□□□□□□
	Wamen Aasenik	○○○○○○○○○○○○			
SODO	Alex Cooley	◇◇◇◇◇◇◇◇◇◇	Interbay	Charlie Costanzo	△△△△△△△△△△
	Brian Mannully	◇◇◇◇◇◇◇◇◇◇		Daniel Martin	△△△△△△△△△△
	Henry Lidman	◇◇◇◇◇◇◇◇◇◇		Jeff Thompson	△△△△△△△△△△
	Kristal Fiser	◇◇◇◇◇◇◇◇◇◇		Johan Helman	△△△△△△△△△△
	Lisa Howard	◇◇◇◇◇◇◇◇◇◇		Nathan Hartman	△△△△△△△△△△
	Meliss Wenker Chis	◇◇◇◇◇◇◇◇◇◇			
	Mark Miller	◇◇◇◇◇◇◇◇◇◇			
	Ron Judd	◇◇◇◇◇◇◇◇◇◇			

77

Seattle Industrial and Maritime Strategy/Potential Strategies/Straw Poll #1

	Investment Strategies				Land Use Strategies				Action Strategies		
	Workforce Investments to Support Access to Opportunity for People of Color and Women	Public Safety Partnership to Support Maritime and Industrial Areas	Transportation Priorities to Improve the Movement of People and Goods	Environmental Justice and Climate Action	Stronger Protections for Industrially Zoned Land	High Density Industrial Development	Healthy Transitional Areas near Urban Villages	No use residential uses	Georgetown and South Park Neighborhood Goals	Master Planning for WOSCA and Armory Sites	Ongoing Stewardship Efforts to Champion this Vision
Strongly Support											
Somewhat Support											
Neutral											
Somewhat Oppose											
Strongly Oppose											

Sally Clark	●●●●●●●●●●●●	Dave Gering	●●●●●●●●●●●●	Marie Kurose	●●●●●●●●●●●●
Nichole Grant	●●●●●●●●●●●●	Erin Adams	●●●●●●●●●●●●	Mike Stewart	●●●●●●●●●●●●
Brian Surratt	●●●●●●●●●●●●	Erin Goodman	●●●●●●●●●●●●	Peter Nize	●●●●●●●●●●●●
Stephanie Bowman	●●●●●●●●●●●●	Fred Mendoza	●●●●●●●●●●●●	Rick Kolpa	●●●●●●●●●●●●
Dan Strauss	●●●●●●●●●●●●	Fred Rivera	●●●●●●●●●●●●	Robb Stack	●●●●●●●●●●●●
Alex Hudson	●●●●●●●●●●●●	Greg Smith	●●●●●●●●●●●●	Sam Farzadine	●●●●●●●●●●●●
Barbara Nebors-Glass	●●●●●●●●●●●●	John Helman	●●●●●●●●●●●●	Terri Mast	●●●●●●●●●●●●
Chad See	●●●●●●●●●●●●	John Persak	●●●●●●●●●●●●		
Charley Reyer	●●●●●●●●●●●●	Jordan Royer	●●●●●●●●●●●●		

CITYWIDE & NEIGHBORHOOD GROUPS

1. Look for a Mural link in the chat
2. Click the link to open the Mural Board in your web browser
3. The Mural Board looks like this
4. Find your name (with 11 dots)
5. One dot for each strategy
6. Drag your dot to the box indicating your choice for each nuance (Strongly Support – Strongly Oppose)
7. You can change your mind, until the exercise is closed

EVERYONE CAN WATCH IN THE ZOOM SCREENSHARE

78

79

Draft Consensus All Strategies Together

Investment Strategies	Land Use Strategies	Action Strategies
1. WORKFORCE INVESTMENTS	5. STRONGER PROTECTIONS	10. WOSCA & ARMORY
2. PUBLIC SAFETY PARTNERSHIPS	6. DENSE INDUSTRIAL DEVELOPMENT	11. STEWARDSHIP ENTITIES
3. TRANSPORTATION PRIORITIES	7. HEALTHY TRANSITIONAL AREAS	
4. ENVIRONMENTAL INITIATIVES	8. NO NEW RESIDENTIAL USES	
	9. GEORGETOWN & SOUTH PARK	



79

80

Draft Consensus All Strategies Together


Investment Strategies	Land Use Strategies	Action Strategies
1. WORKFORCE INV		CA & ARMORY
2. PUBLIC SAFETY PA		RDSHIP ENTITIES
3. TRANSPORTATION		
4. ENVIRONMENTAL		

STRAW POLL #2
 (Citywide & Neighborhood Group members only)


Do you support the package of all 11 strategies?

A. Yes: Recommend to the Mayor

B. No: Do Not Recommend to the Mayor



80



Seattle Industrial and Maritime Strategy/Potential Strategies Straw Poll #2

Investment Strategies

1. Workforce Investments to Support Access to Opportunity for People of Color and Women
2. Public Safety Partnership to Support Maritime and Industrial Areas
3. Transportation Priorities to Improve the Movement of People and Goods
4. Environmental Justice and Climate Action

Land Use Strategies

5. Stronger Protections for Industrially Zoned Land
6. High Density Industrial Development
7. Healthy Transitional Areas near Urban Villages
8. No use residential uses
9. Georgetown and South Park Neighborhood Goals

Implementation Strategies

10. Master Planning for WOSCA and Armory Sites
11. Ongoing Stewardship Entities to Champion this Vision

Recommend to the Mayor

Do not Recommend to the Mayor


Citywide Advisory Group

Sally Clark	●	Dave Gering	●	Marie Kurose	●
Nichole Grant	●	Erin Adams	●	Mike Stewart	●
Brian Surratt	●	Erin Goodman	●	Peter Nitze	●
Stephanie Bowman	●	Fred Mendoza	●	Rick Kolpa	●
Dan Strauss	●	Fred Rivera	●	Robb Stack	●
Alex Hudson	●	Greg Smith	●	Sam Ferrazalino	●
Barbara Nabors-Glass	●	Johan Hellman	●	Terri Mast	●
Chad See	●	John Persak	●		
Charley Royer	●	Jordan Royer	●		

Neighborhood Groups

Ballard	Georgetown & South Park	SODO	Interbay
Angie Gerrald ○	Clint Bergquist □	Alex Cooley ◇	Charlie Costanzo △
Brad Benson ○	Elena Lamont □	Brian Mannelly ◇	Daniel Marlin △
Brent Leckey ○	Johnny Bianchi □	Henry Liebman ◇	Jeff Thompson △
Daniel Blanchard ○	Jon Holden □	Kristal Fiser ◇	Johan Holtman △
Eric Nelson ○	Kevin Kelly □	Lisa Howard ◇	Nathan Hartman △
Heley Keller ○	Maria Ramirez □	Malco Winkler Chin ◇	
Russel Shrewsberry ○	Paulina Lopez □	Mark Miller ◇	
Shaunie Wheeler ○	Roger Bielous □	Ron Judd ◇	
Suzie Burke ○	Veronica Wade □		
Warren Askerivik ○			

81



Seattle Industrial and Maritime Strategy/Potential Strategies Straw Poll #2

Investment Strategies

1. Workforce Investments to Support Access to Opportunity for People of Color and Women
2. Public Safety Partnership to Support Maritime and Industrial Areas
3. Transportation Priorities to Improve the Movement of People and Goods
4. Environmental Justice and Climate Action

Land Use Strategies

5. Stronger Protections for Industrially Zoned Land
6. High Density Industrial Development
7. Healthy Transitional Areas near Urban Villages
8. No use residential uses
9. Georgetown and South Park Neighborhood Goals

Implementation Strategies

10. Master Planning for WOSCA and Armory Sites
11. Ongoing Stewardship Entities to Champion this Vision

Recommend to the Mayor

Do not Recommend to the Mayor

CITYWIDE & NEIGHBORHOOD GROUPS

1. Look for a Mural link in the chat
2. Click the link to open the Mural Board in your web browser
3. The Mural Board looks like this
4. Find your name (with 1 dot)
5. Only one vote: Up or Down
6. Drag your dot to the box indicating your choice:
 - Recommend to the Mayor
 - Do Not Recommend to the Mayor
7. You can change your mind, until the exercise is closed

EVERYONE CAN WATCH IN THE ZOOM SCREENSHARE

82

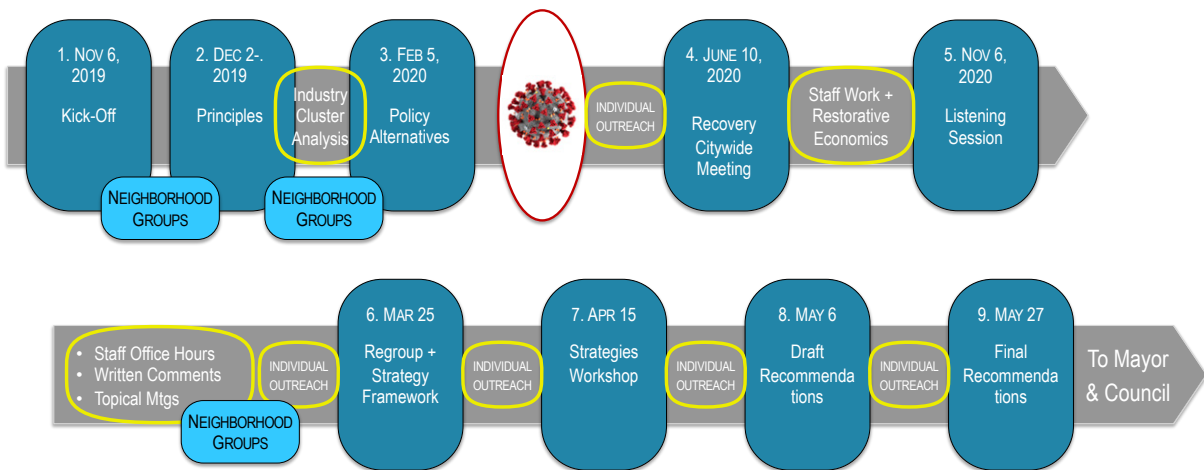
Today's Agenda



- Welcome & Introductions
- Process Update .
 - Mayor's Principles
 - Process Recap & Steps to Completion
 - Meeting Structure & Ground Rules
- Consensus Framework .
 - Presentation (10 mins.)
 - Discussion (10 mins.)
- Draft Strategies
 - Presentation (20 minutes)
 - Discussion (30 minutes)
- Straw Polls
 - #1: Levels of Support for Each Strategy (10 minutes)
 - #2: Up or Down on the Whole Package (5 minutes)
 - Discussion (15 minutes)
- **Wrap-up & Next Steps**



Industrial & Maritime Strategy Planning Process to finish



Next Meeting:
 May 27, 12-2, via Zoom



85

Final Meeting
Citywide Advisory Group

May 27, 2021
12-2pm via Zoom

85