

April 2021

Equitable Development Initiative RFP Workshops

Briefing Objectives:

- EDI & EDI Fund background
- Current Status

EDI Origin Story

South CORE

South Communities Organizing for Racial/Regional Equity: a coalition of 21 community organizations working on a vision for community controlled and inspired development in the Rainier Valley (including Puget Sound Sage)

RSET

Race and Social Equity Taskforce: Coalition formed. Create, inform, and implement the EDIP

OPCD and OCR

City of Seattle Office of Planning and Community Development

Office of Civil Rights

CSI

Consulting/ capacity building

EDI Values

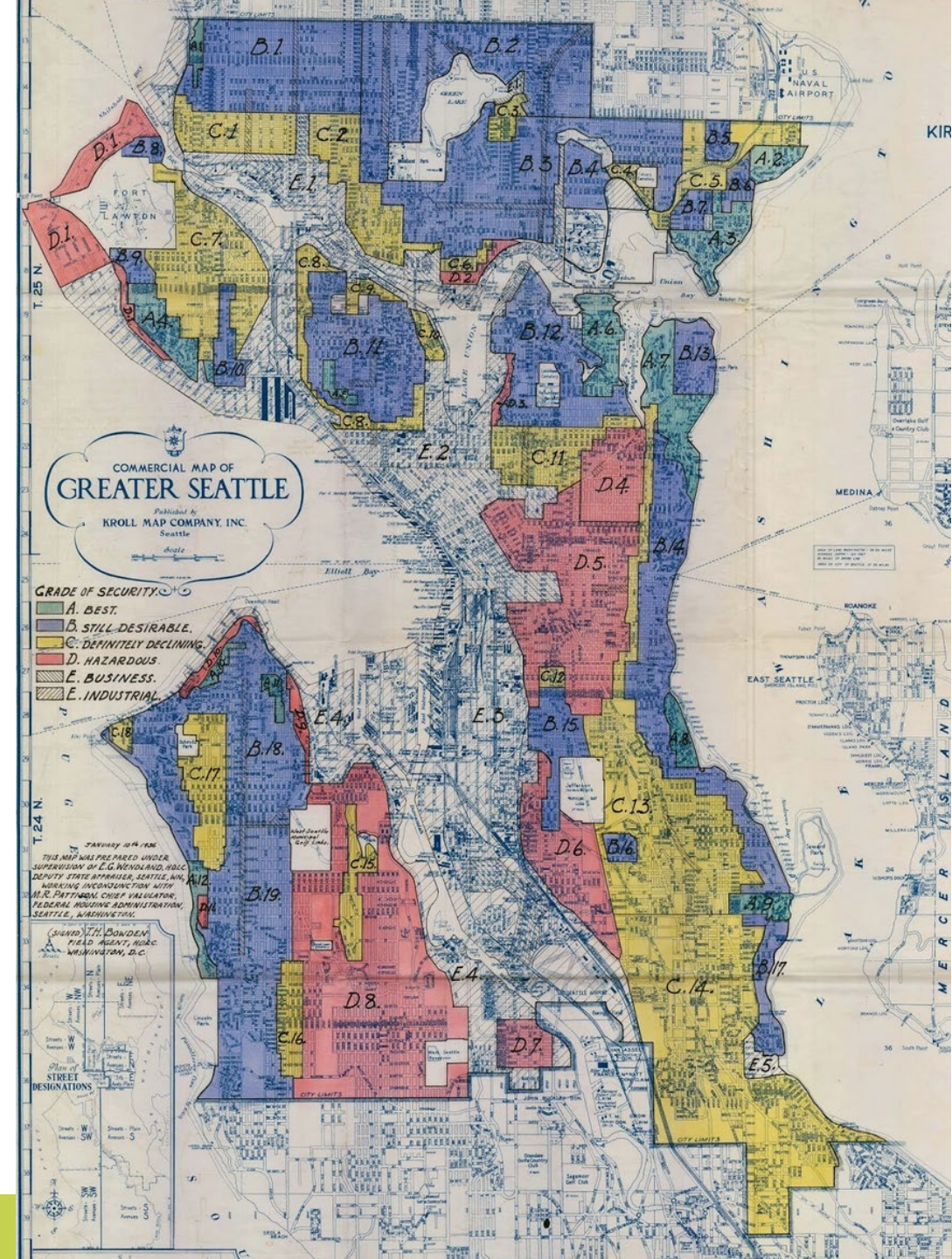
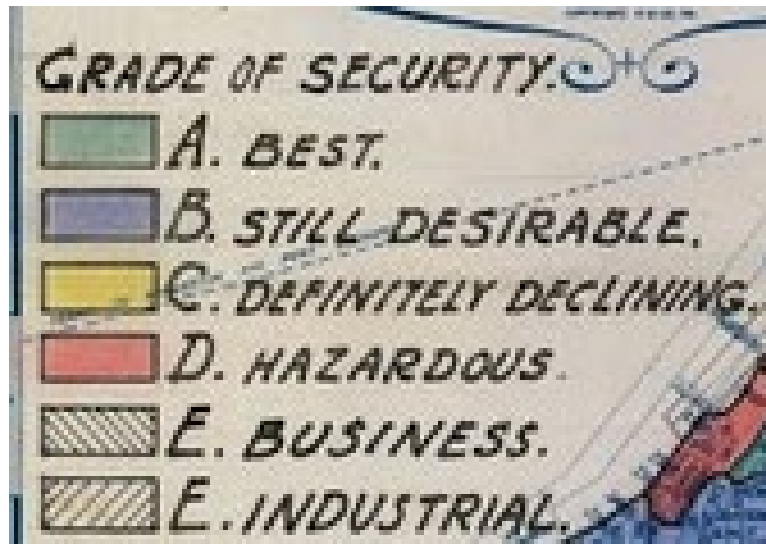
- Centering communities most impacted by displacement
- Community-driven strategies
- Acknowledging historic injustices
- Accountability
- Leverage
- Flexibility and interdependence
- System change

Equitable Development Initiative

- Equity Analysis as companion to the Comprehensive Plan update EIS to inform Growth Strategy
- Race and Social Equity Goals and Policies in the Comprehensive Plan
- Equitable Development Implementation Plan

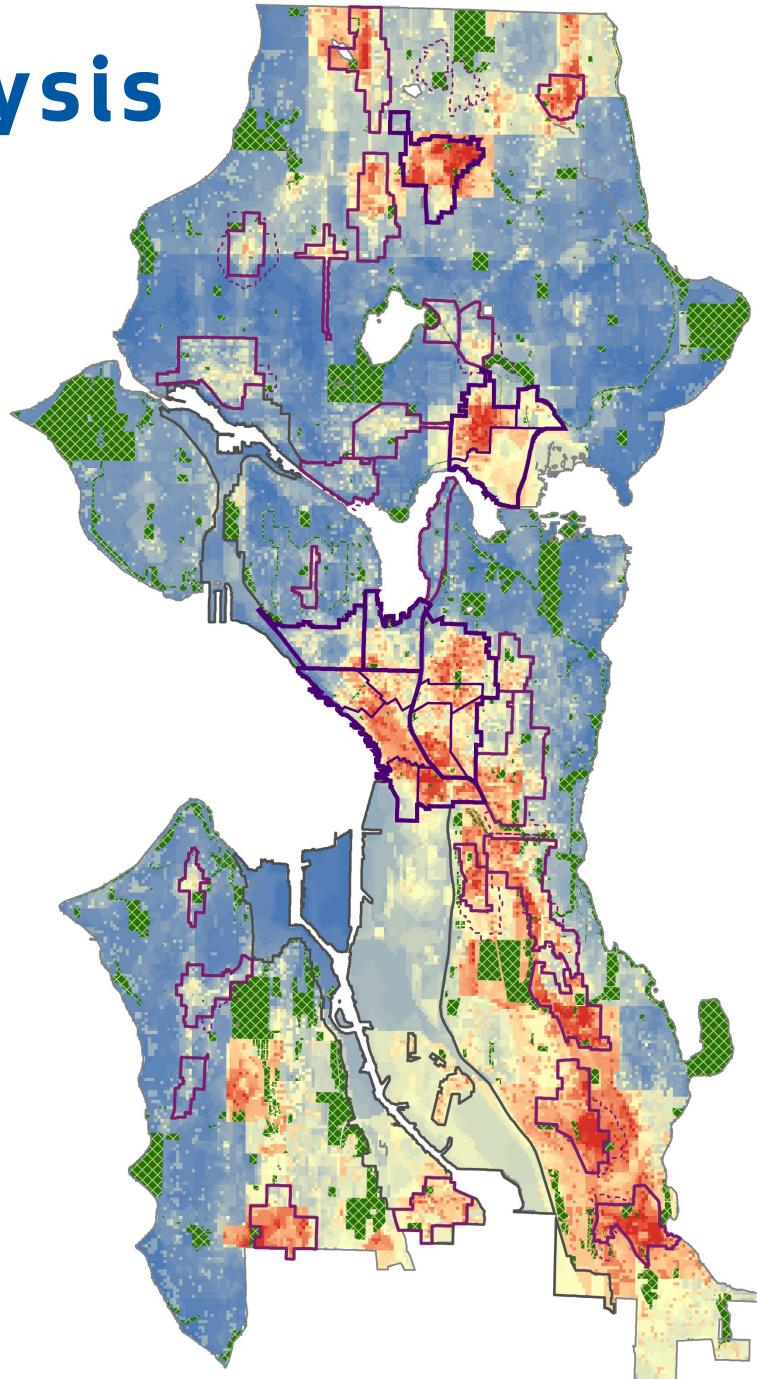
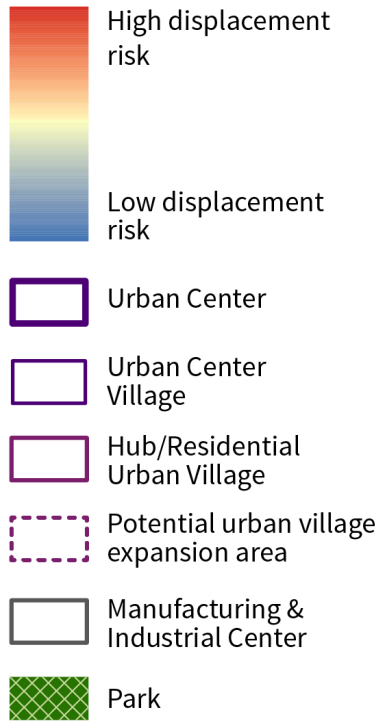
Redlining in Seattle

Investment decisions made by previous generations contributed to the inequities communities experience today.

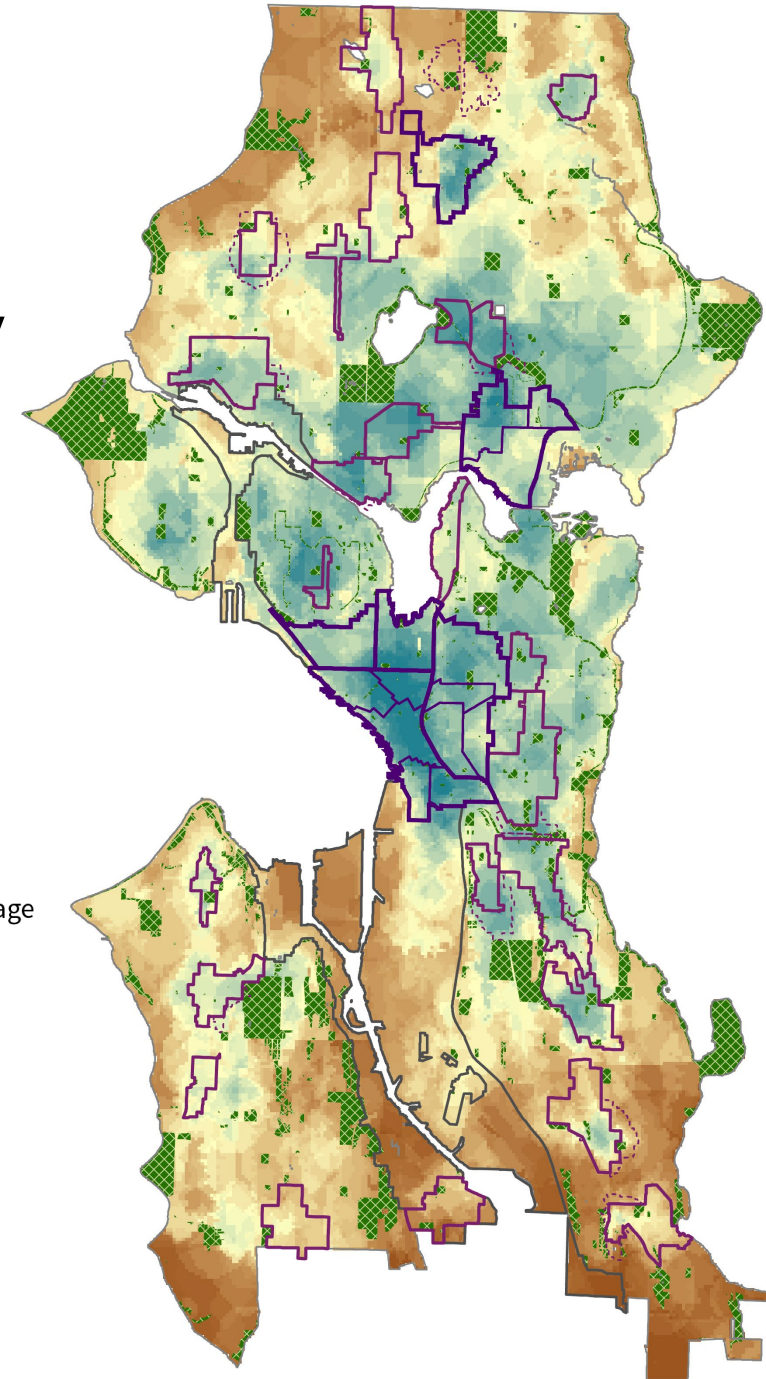


Equity Analysis

Risk of Displacement

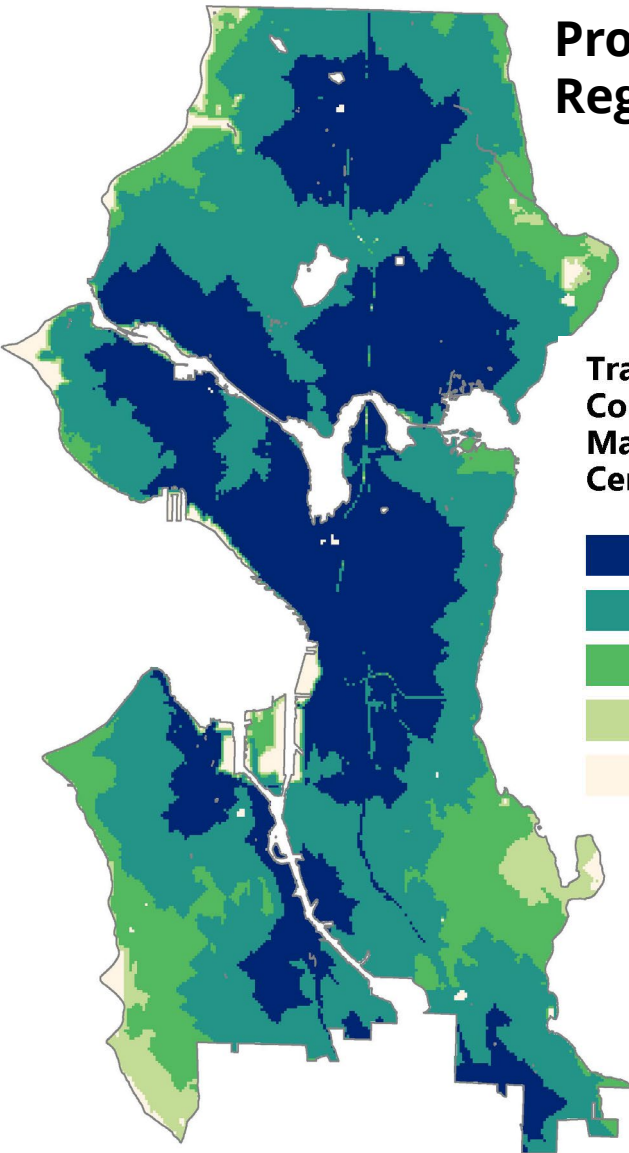


Access to Opportunity



Examples of layers in Equity Analysis Index

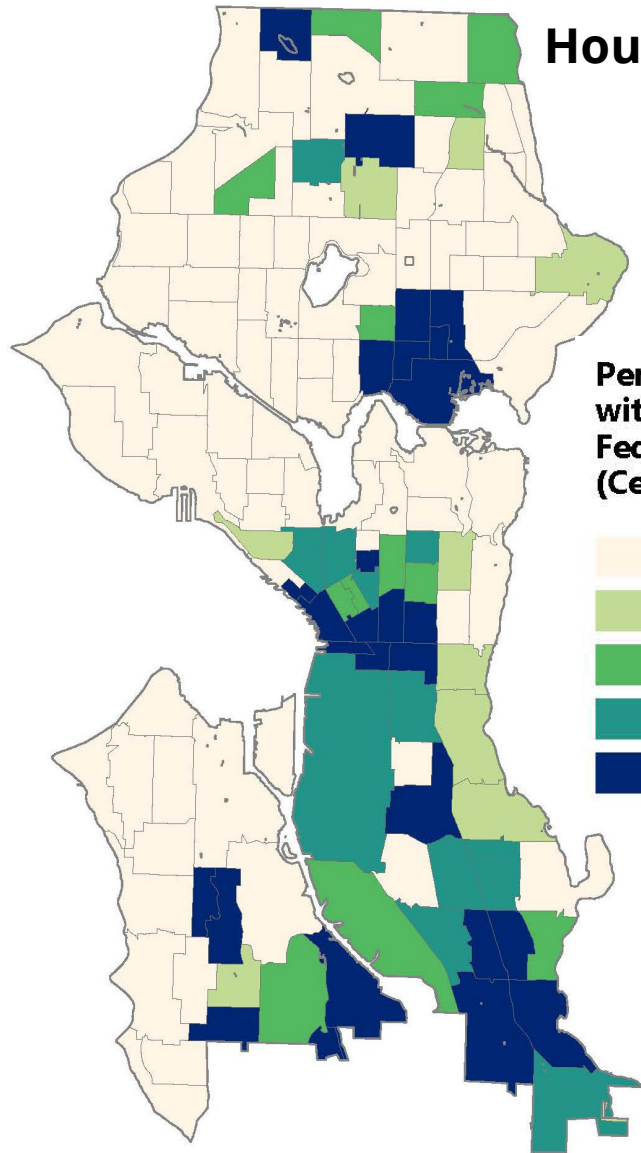
Proximity to Regional Job Center



Travel time to designated King County Urban Centers and Manufacturing & Industrial Centers (minutes)

- < 5
- 5 - 10
- 11 - 15
- 16 - 20
- > 20

Household Income



Percentage of the population with income below 200% of the Federal poverty level (Census tract)

- < 25%
- 25% - 30%
- 31% - 35%
- 36% - 40%
- > 40%

Equitable Development Framework: Strong People, Strong Communities

Strategies to achieve community stability and resilience in the face of displacement, and great neighborhoods with access by all:



Advance economic mobility and opportunity



Prevent residential, commercial, and cultural displacement



Build on local cultural assets



Promote transportation mobility and connectivity



Develop healthy and safe neighborhoods



Provide equitable access to all neighborhoods

Place-based Targeted Strategies

Priority Neighborhoods

- High levels of chronic / recent displacement
- History of racially driven disinvestment
- Significant populations of marginalized communities
- Community strategies created through inclusive community engagement
- Major transportation investment

Equitable Development Initiative Fund

Investment in targeted place-based strategies

FUNDING

- \$5M annually from AirBNB tax
- \$1.8M this year from recycling some funding from previous years that wasn't able to be used.

WHY

Address historic and market inequities through investing in projects and programs that mitigate displacement and increase access to opportunity.

HOW

- Community Capacity Development
- Project Development

Eligibility

EDI Partners from 2017-2019

- May amend project lead organization (ex. No longer needing a fiscal sponsor after receiving 501c3 status)
- Must complete supplemental questions in EDI application
- Can apply for capacity-building and/or capital funding

Everyone Else

- Does not have to be a 501c3 but must be registered in WA State and City
- Do **not** need to complete supplemental questions
- Can apply for capacity-building and/or capital funding

Supplemental Questions

Why are we asking?

- Helps the review committee track progress from previous awards
- Ensures that projects are remaining consistent with the goals that were previously approved

Criteria

Core Scoring

- Equity Drivers
- Depth of Relationship
- Project Reasonableness
- Displacement Risk
- Access to Opportunity

Examples of other Consideration

- Geographic distribution
- Balance of Shovel-Hungry vs. Shovel-Ready projects
- Mix of project types
- Demonstrated nexus with historic disinvestment and discriminatory policies

EDI Scoring Ex. Depth of Relationship

Strong (deserves high score)	Weak (deserves low score)
Does the leadership (Board and Executives) reflect the community being served?	Is there significant disparity between the organization's staff and community?
Does the organization focus on anti-displacement or community development work?	Is this proposal a departure from the org's founding mission and purpose?
Is the proposal the result of previous community efforts?	Was the proposal developed solely in the context of the EDI funding round?
Does the total proposed budget adequately resource all collaborative partners?	Does the collaboration rely on the unreimbursed work of partner organizations?
Does the organization demonstrate clear reasoning as to why they are leading the work?	Are there other organization in the area that would potentially do a better job as the project sponsor?

Equity Drivers

STRONG (deserves high score)	WEAK (deserves low score)
Does the proposal show a clear connection between the project and Equity Drivers from the EDI Implementation Plan?	Does the proposal have a limited logical connection to EDI Implementation Plan?
Does the proposal describe measurable outcomes that it aims to influence to advance EDI drivers?	Does the proposal lack a vision for how effectiveness would be viewed?
Is the proposal at a sufficient scale to be able to address the community need?	Does the proposal not have a way to scale to the point where there would be significant benefit to the community?
Does the project represent a substantial effort to address three Equity Drivers equally?	Is the project mostly about one Equity Driver with others thrown in to comply with the application rules?
Do the proposed Equity Drivers clearly align with needs in the community?	Are the proposed Equity Drivers driven primarily by an organization's existing programs?

Funding Round Timeline



Equitable Zoning Pilot

- The purpose of the pilot is to explore whether other OPCD skill sets can be used to help EDI projects address zoning and land use challenges.
 - The next steps are identifying potential groups of needs that may share common solutions
 - Finding projects that have a schedule that is consistent with the potential solutions
 - Collaborating on implementing solutions and assessing their effectiveness