

ISRD Workshop 1

A Look Back and Forward

Schemata Workshop & BOLA Architecture and Planning

Schemata Workshop





Capitol Hill - Broadway Transit Oriented Development Development Guidelines and Urban Design Recommendations Report

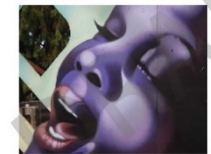
February 3, 2010



prepared for



Central Area Neighborhood Design Guidelines



DESIGN
& VISUAL

City of Seattle
Department of Planning and Development

Schemata Workshop



Schemata Workshop





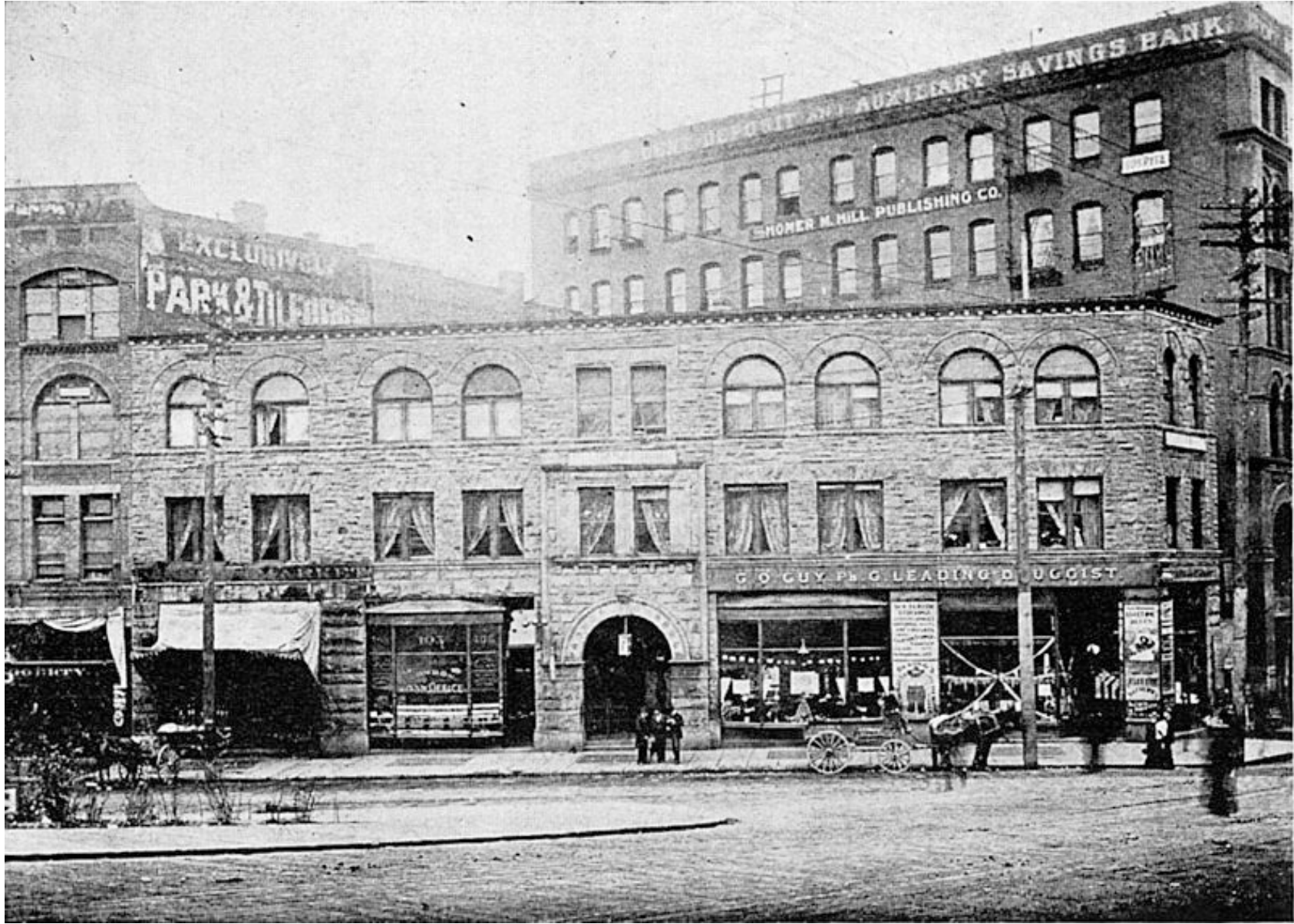
Property of Museum of History & Industry, Seattle



BOLA Architecture and Planning



BOLA Architecture and Planning



BOLA Architecture and Planning



International Special Review District Design Guidelines

Overview and Process

Process

Overview of work group meetings:



Workshop 1

Workshop 2

Workshop 3

Workshop 4

Workshop 5

A look
back/forward
February

Walking Tour A
& Discussion
March

Walking Tour B
& Discussion
March

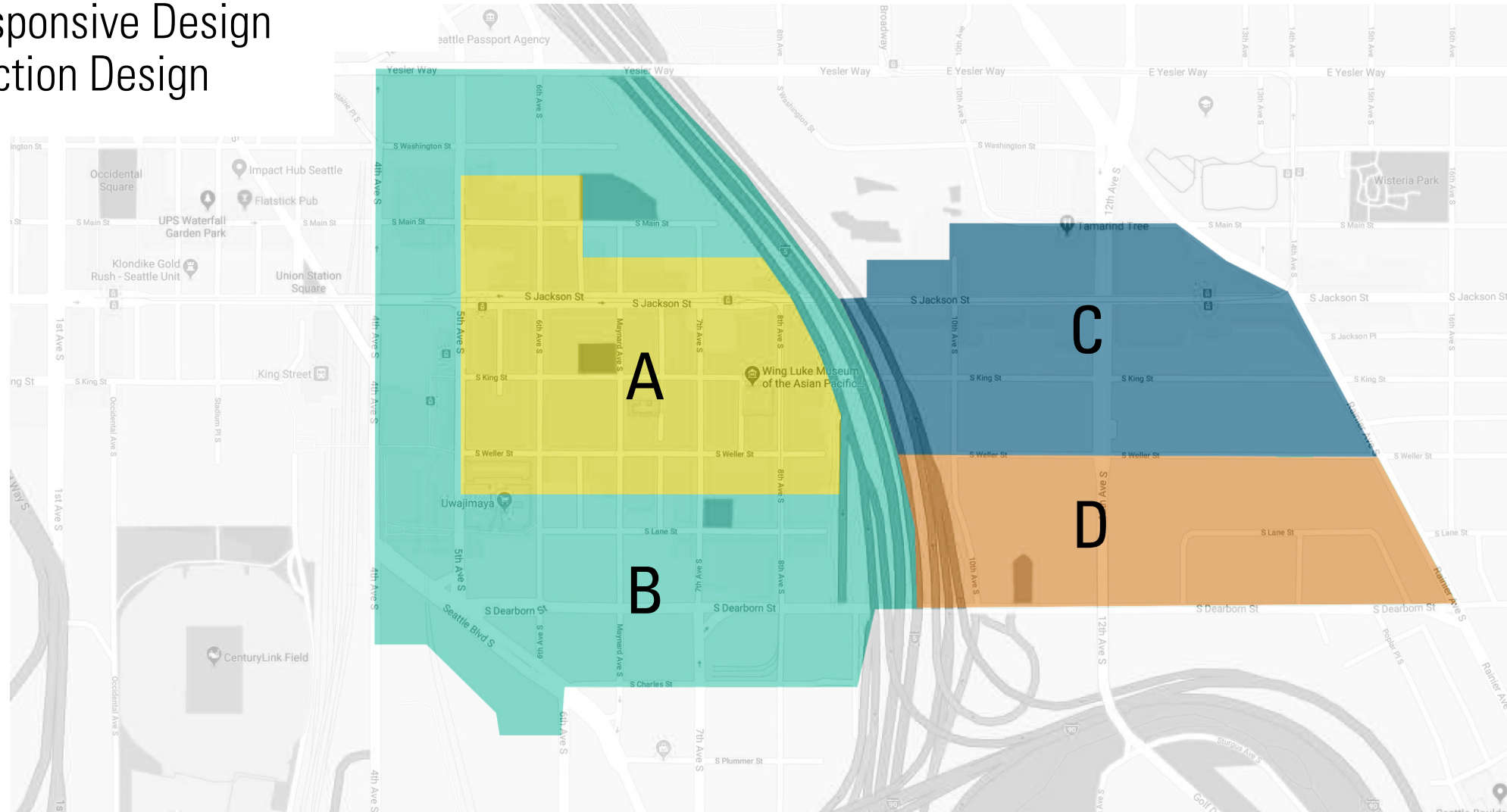
Walking Tour C
& Discussion
March

Walking Tour D
& Discussion
April

Process

Locational focus with three themes:

- Historic Preservation
- Culturally Responsive Design
- New Construction Design



International Special Review District Design Guidelines

Background Review and Analysis

1. Seattle Municipal Code 23.66
2. ISRD Design Guidelines (1988)
3. Working Draft ISRD Design Guidelines (revised 2017)
4. Seattle Citywide Design Guidelines (revised 2013)
5. The Secretary of the Interior's Standards for Rehabilitation and Guidelines
6. Illustrated Guidelines on Sustainability for Rehabilitating Historic Buildings
7. Relevant National Parks Service Historic Buildings Preservation Briefs
8. Chinatown International District Strategic Plan (1998)
9. Chinatown International District 2020 Healthy Community Action Plan



Seattle Municipal Code 23.66

- Has goals for overall district, as well as the IDM, IDR, East of I-5 and Union Station Corridor
- Encourages rehabilitation and renovation of existing structures in a contextually compatible way
- Lists building elements, materials, colors, surfaces and transparencies appropriate for the Asian Design Character District

ISRD Design Guidelines (1988)

- Primary focus on Awnings & Canopies, Storefront Design, Security Systems, Sidewalk Displays, and Signage
- Makes reference to the SMC as well as the Secretary of Interior's Standards for Rehabilitation when addressing façade alterations

Draft ISRD Design Guidelines (2017)

- Outlines the purpose of the ISRD as promoting, preserving, and perpetuating the cultural, social, economic and historical qualities of the area
- Describes criteria and process for Certificate of Approval
- Encourages accessibility and pedestrian-oriented street level design
- Provides specific guidance on site design, building design, signage and appropriate exterior materials, detailing and colors

Seattle Citywide Design Guidelines (2013)

- Breaks guidance down into three topic areas: Site & Context, Public Life and Design Concept
- Recommends that existing architectural character, history and culture be considered in the design process
- Allows for specific, location based, neighborhood design guidelines to be used as an additional overlay

Chinatown International District Strategic Plan (1998)

- Builds on the 1992 International District community plan
- Has four objectives: Cultural and Economic Vitality, Housing Diversity and Affordability, Safe and Dynamic Public Spaces, and Increased accessibility
- Focus on having a pedestrian friendly environment to support and encourage patronage of businesses



Chinatown International District 2020 Healthy Community Action Plan

- Vision is to ensure CID is a healthy, safe and livable neighborhood for residents, businesses and community members
- Focus on having a clean and welcoming street presence to promote safe environments and increase outdoor activity
- Provides measureable outcomes to track the CID's progress on health, safety, and livability objectives

Other documents we will be reviewing:

- The Secretary of the Interior's Standards for Rehabilitation and Guidelines
- Illustrated Guidelines on Sustainability for Rehabilitating Historic Buildings
- Relevant National Parks Service Historic Buildings Preservation Briefs

Common themes arising from our review

- Promoting Asian character design (through signage and other elements)
- Ensuring public spaces are designed with a welcoming and pedestrian-friendly focus
- Contextually appropriate alterations to historic buildings through adherence to the Secretary of Interiors Standards
- Feeling safe in the streets – accessibility/CPTED

Questions arising from our review

- What does Asian character design mean?
- How does new development address and incorporate Asian character?
- What is culturally responsive design? And when does it become cultural appropriation or ornamentation without meaning?
- What public spaces do the community find welcoming?
- What do new buildings in a historic/cultural neighborhood look/feel like?

International Special Review District Design Guidelines

Jurisdiction Precedent Study

Design Guidelines from other Cities

Westcoast cities with Asian cultural districts:

1. Portland, OR
2. Vancouver, BC
3. Los Angeles, CA

