

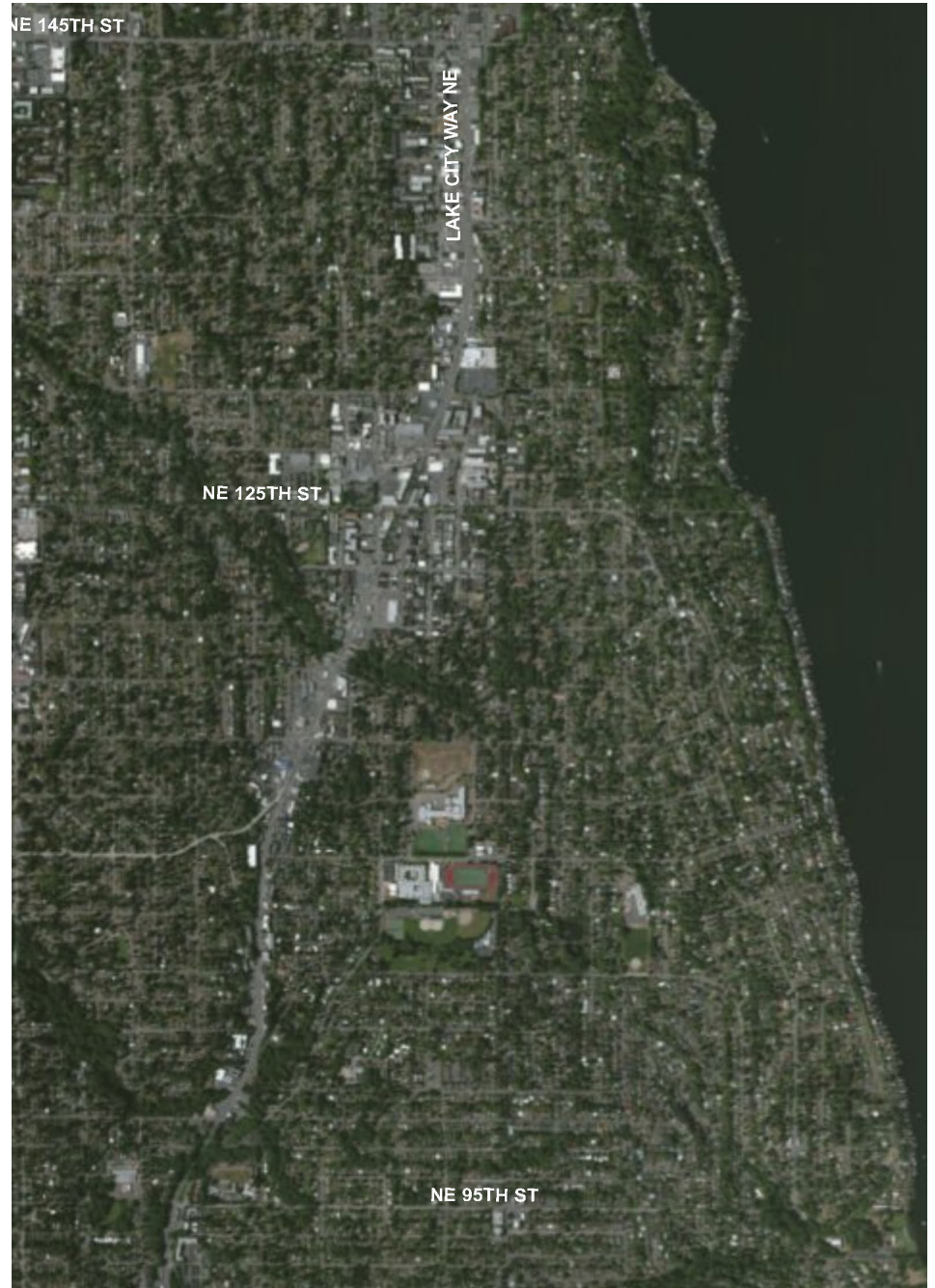


Lake City


Urban Design Advisory Group Introduction & Overview


March 2014

Lake City & the North Neighborhoods





Lake City & the North Neighborhoods

 hub urban village

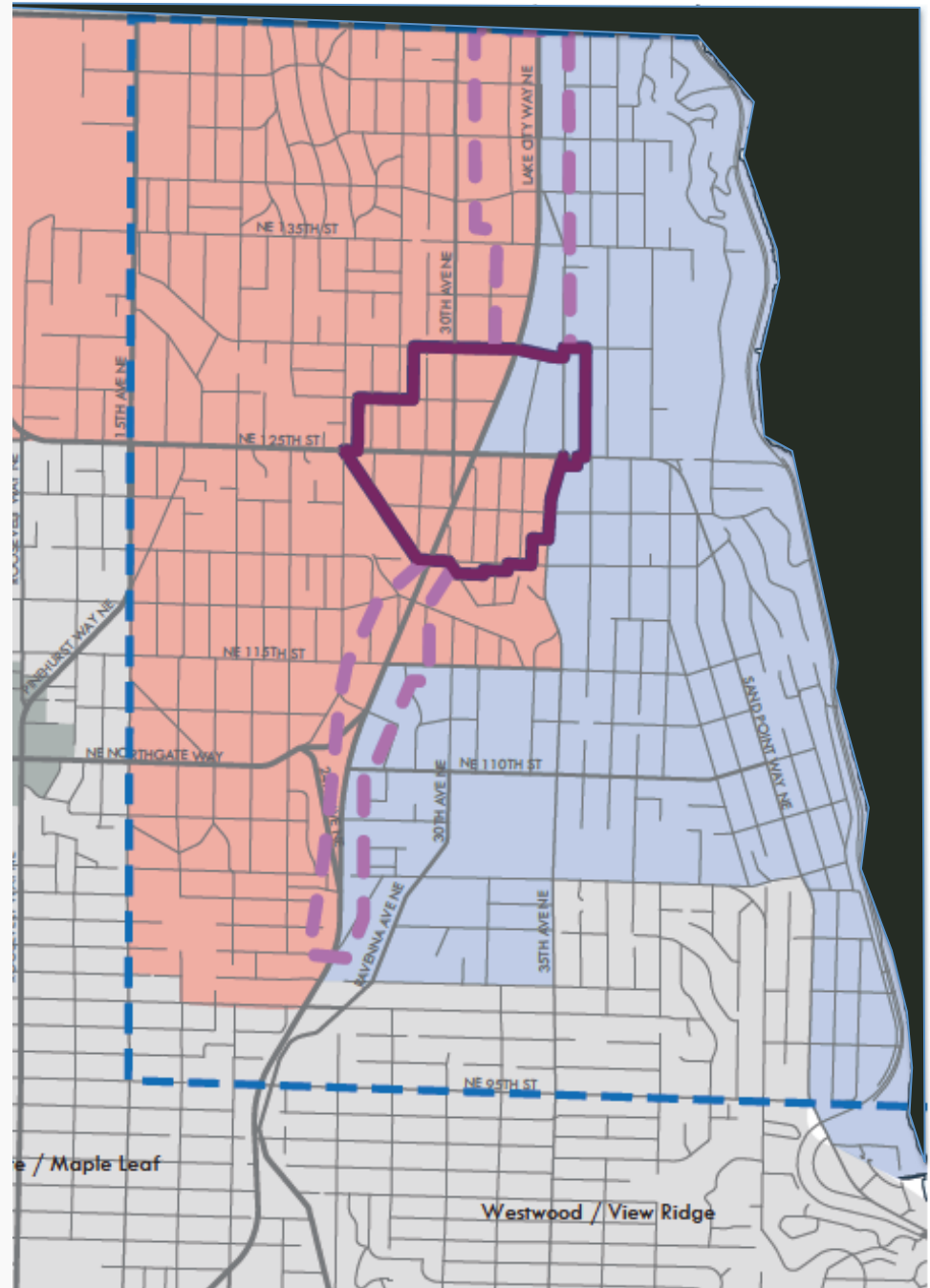
 other urban design review areas

community reporting areas

 Olympic Hills / Victory Heights

 Cedar Park / Meadowbrook

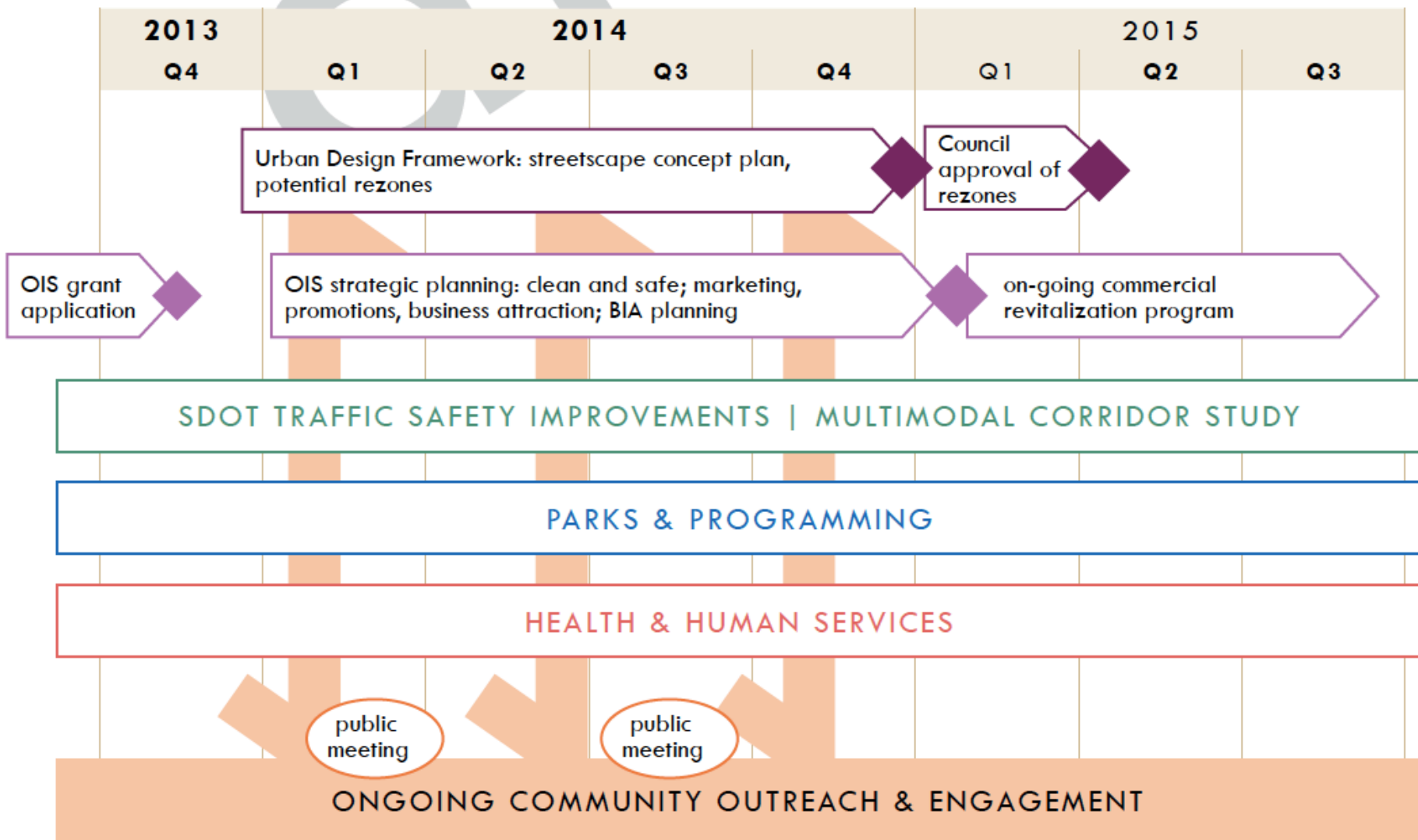
 North District Planning Area



Components

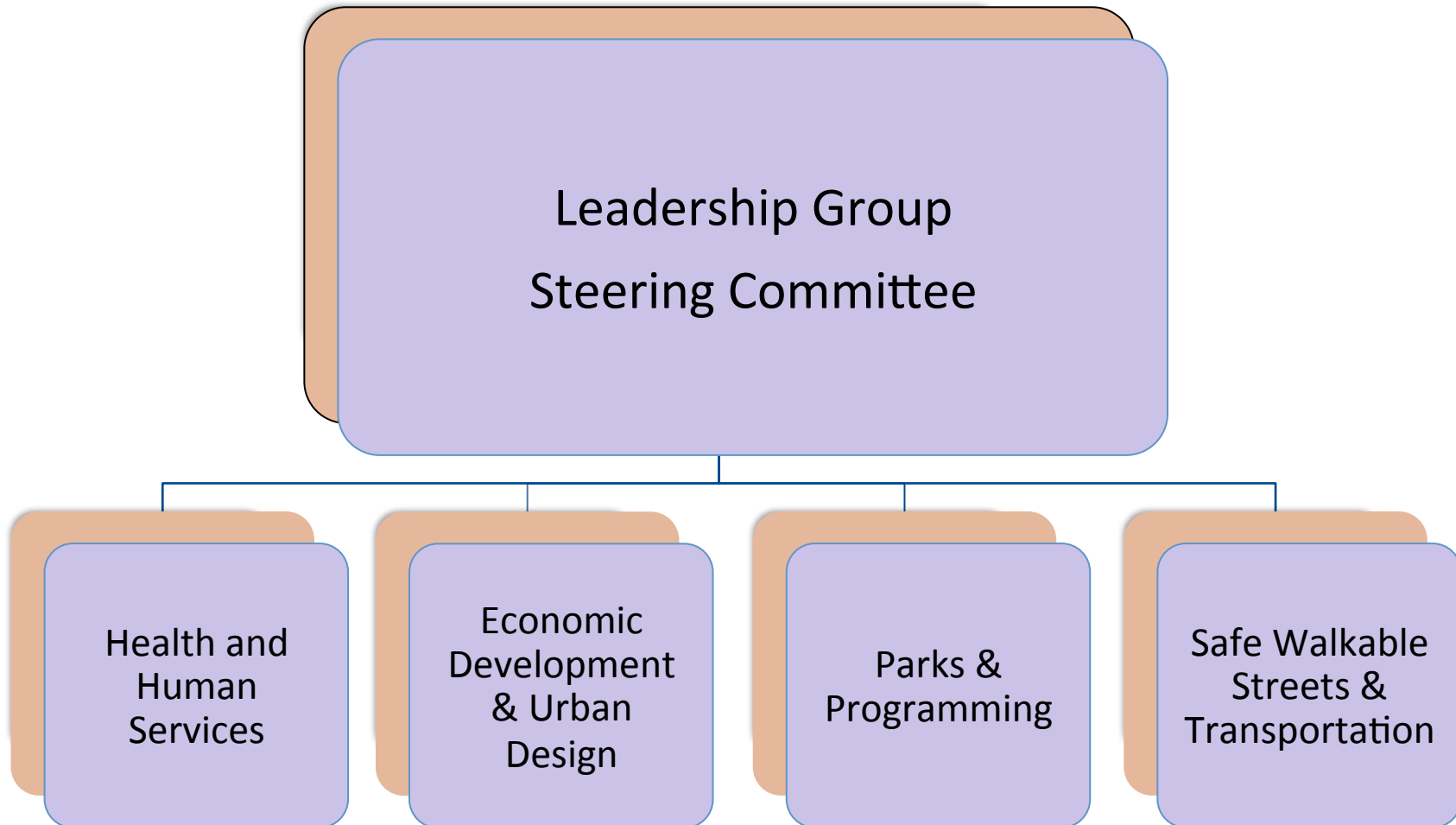


- ✓ *Commercial Revitalization Plan*
- ✓ *Urban Design Framework*
- ✓ *Multi-Model Corridor Study*



People & Groups

(tentative)



Roles (tentative)

- Leadership Group
- Steering Committee
- Co-Chairs
- Facilitator
- Working Groups
 - Safe, Walkable Streets; Efficient Transportation
 - Parks and Programming
 - Health and Human Services
 - Economic Development and Urban Design

Urban Design Framework.



- *Framework guiding future development*
- *Strong Partnerships*
- *Policy Changes*
 - *Comp Plan Updates*
 - *Zoning*
 - *Design Concepts*

Ground Rules

- Everyone's voice
- Take Turns
- Listen & Respect
- Keep things moving
- Positive Solutions
- Facilitation
- Be on Time
- Catch up quietly
- Respect the process
- Professionalism

Responsibilities

- Attend Meetings
- Positive Communication
- Assist in Outreach & Implementation
- Play Appropriate Role
- Leverage Resources
- Participate
- Advocate
- Bring Knowledge
- Collaboration

Participating Agencies

- City of Seattle Department of Planning and Development
- City of Seattle Department of Transportation
- City of Seattle Office of Economic Development
- Lake City Neighborhood Alliance



Agenda

- Welcome..... 5:30 - 5:35
- Project Principles..... 5:35 - 6:00
- Past Plans..... 6:00 - 6:30
- Project Principles..... 6:30 - 7:30

LAKE CITY

urban design

Review of Previous Plans
March 2014

1992 Urban Village Visualization Workshop

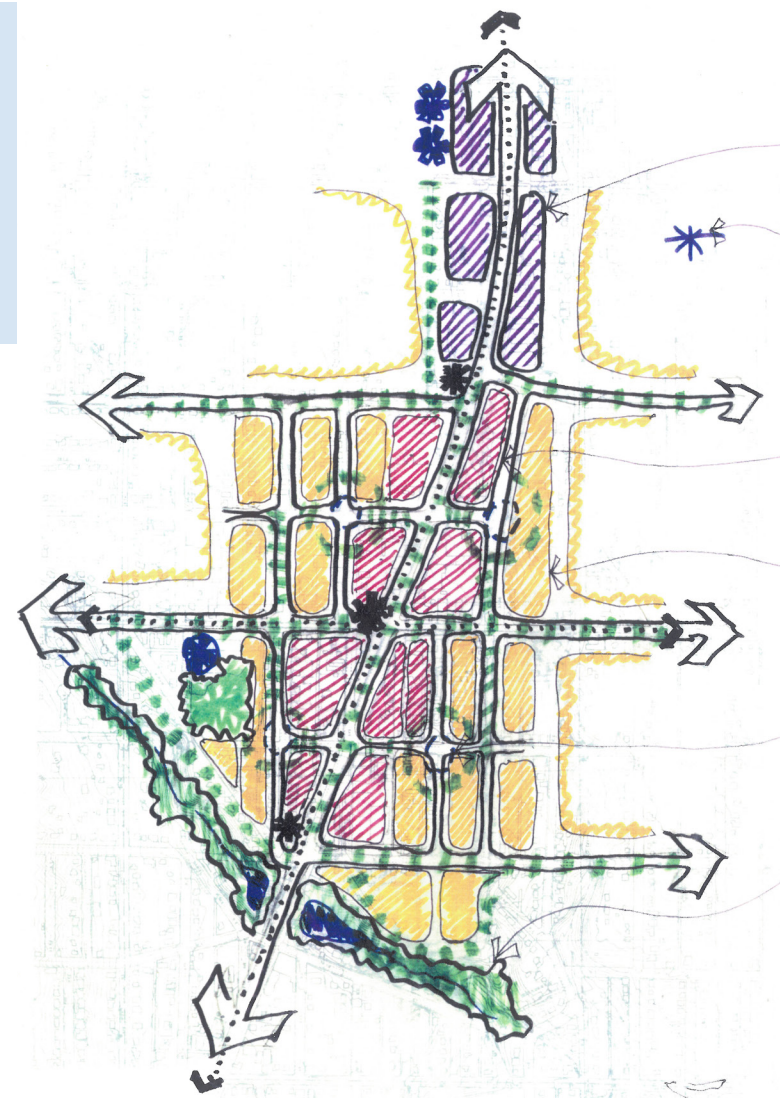
POSITIVE

- » natural features:
Thornton Creek
- » rural character
- » transit connections

NEGATIVE

- » lack of pedestrian infrastructure
- » auto-oriented
- » poor transitions between commercial & residential uses

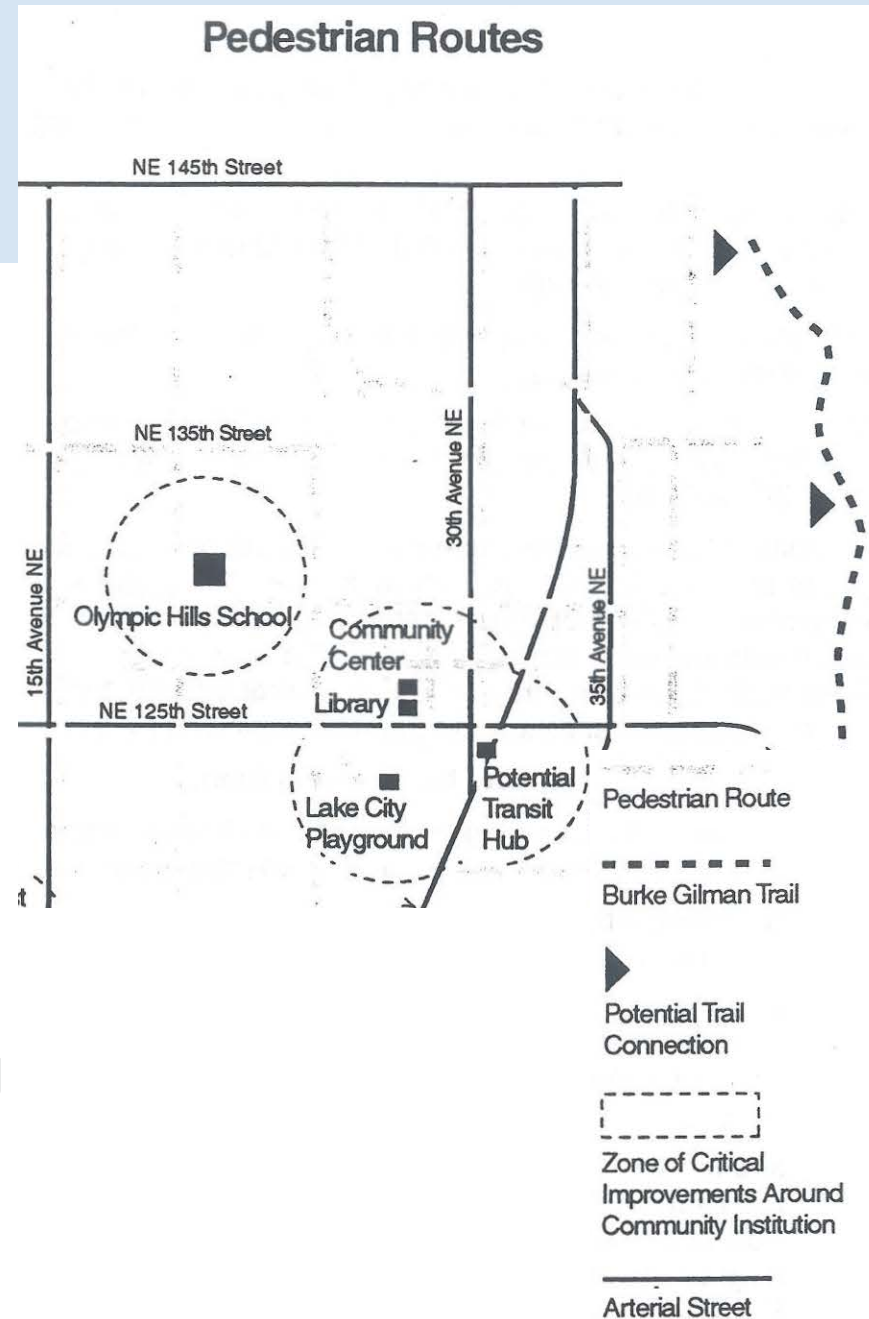
“Making the pieces add up: continuing to find ways to hook places and development together.”



- ★ Transit Stops
- ★ Public Facilities
- ▨ High Density - Commercial/Retail
- ▨ Mixed Use - Commercial/Residential
- ▨ Employment Centers
- ▨ Pedestrian Pathways

1999 North District Neighborhood Plan

- » LCW is a nice boulevard but divides east from west
- » build out and around the civic core
- » strengthen the business district
- » support community organizations & respect their input
- » improve public safety
- » enhance natural systems & create more parks
- » encourage a balanced mix of housing
- » improve access to human services
- » strengthen design review



2001 Civic Center Master Plan

Studied 11 alternatives to implement neighborhood plan goals:

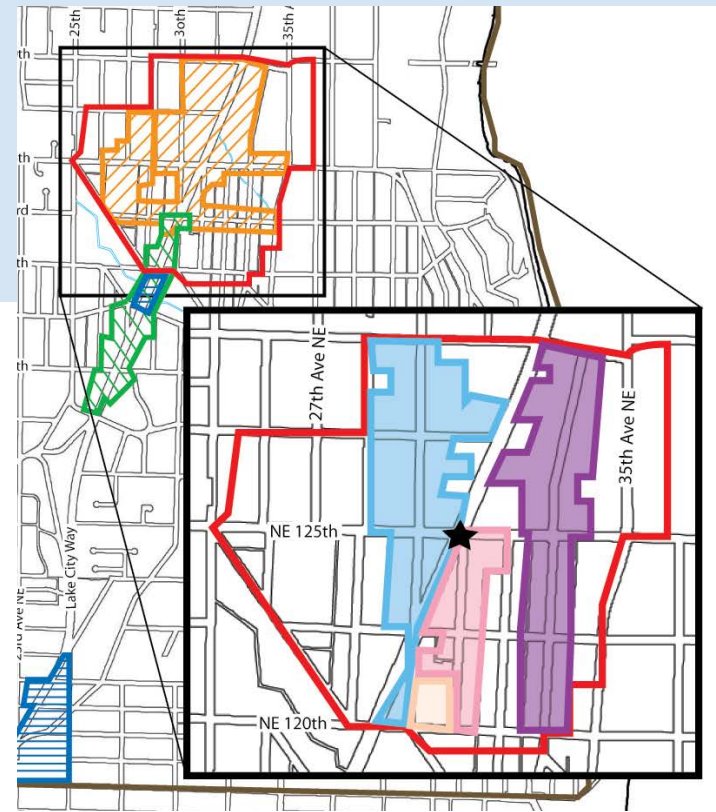
- » library expansion
- » neighborhood service center relocation
- » Albert Davis Park
- » parking garage
- » “town square” plaza

Library and park opened in 2005



2007 Neighborhood-Specific Design Guidelines

- » balance scale of commercial and residential
- » increase safety
- » make the area attractive
- » create a convenient, pedestrian-friendly business district
- » accessible by all modes, for all abilities
- » connect to open space
- » increase sense of community



| Key | |
|------------------------------------|--------------------|
| = North Neighborhood Planning Area | = Minipark |
| = Hub Urban Village | = 30th Street |
| = Civic Core | = 31st Street |
| = Auto Row | = 33rd Street |
| = Thorton Creek | = Both 30th & 31st |

“Create a unique, place-making image for the designated Hub Urban Village resulting in a scale and ambiance that people like, feel comfortable in, and want to return to.”

2009 Status Check

- » need pedestrian & bike infrastructure
- » safety is a concern – crime & graffiti has increased
- » strengthen design review
- » strengthen the business district
- » build more green infrastructure – parks, trails, trees
- » improve transit service, including light rail



Status Check

Seattle Citizens Assess Their Communities & Neighborhood Plans

prepared by
Seattle Planning Commission
October 2009

Status Check
Transcript of Lake City Questionnaire Responses

The Plan for the Neighborhoods of the Lake City Community was adopted in 1999 and includes the Lake City Hub Urban Village. The map shows the neighborhood plan and urban village boundaries.

In 2009, the City began preparing Status Reports for 24 neighborhood plans. This document contains the responses to an on-line questionnaire that asked the questions listed below. The chart shows the number of people who responded.

100 responses

| Question | Yes | No | Other |
|-------------------------|-----|----|-------|
| lived here | 38 | 22 | 40 |
| worked in business | 12 | 18 | 70 |
| participating in school | 10 | 15 | 75 |
| worked in school | 15 | 20 | 65 |
| attended school | 10 | 15 | 75 |

Urban Village
City of Seattle

Status Check: How is Your Neighborhood Doing?

Prepared by
Seattle Planning Commission
October 2009

“Community spirit is alive and needs to grow with additional civic-sponsored community events.”

2012-2013 UW projects & Pierre Properties Visioning

- » create distinct districts
- » expand and link open spaces
- » improve circulation
- » increase pedestrian safety & access
- » incorporate more housing and jobs in taller buildings
- » rezone to encourage less auto-focused uses

“strengthen and expand the opportunities for public life, with a special focus on youth”

