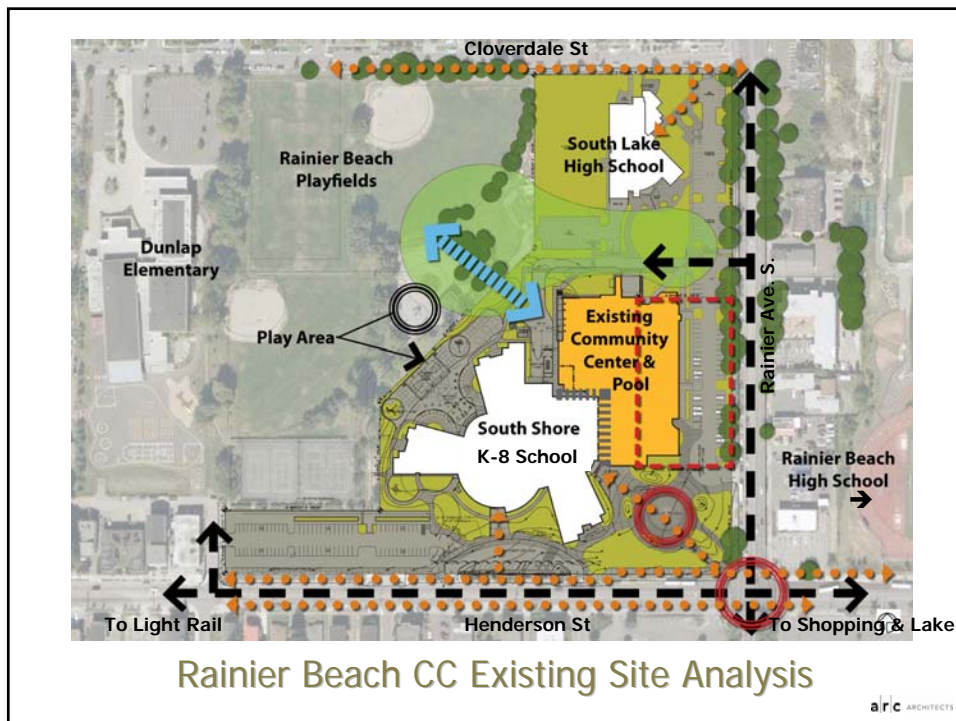


Rainier Beach Community Center and Pool

Seattle Design Commission
May 6, 2010





View of site from South Plaza and Henderson St.



View of site from North sidewalk along Rainier Ave

Rainier Beach CC Existing Site Images

alr|c ARCHITECTS



Beer Sheva Park



Local Business



Bus stop



South Lake HS



Dunlap School



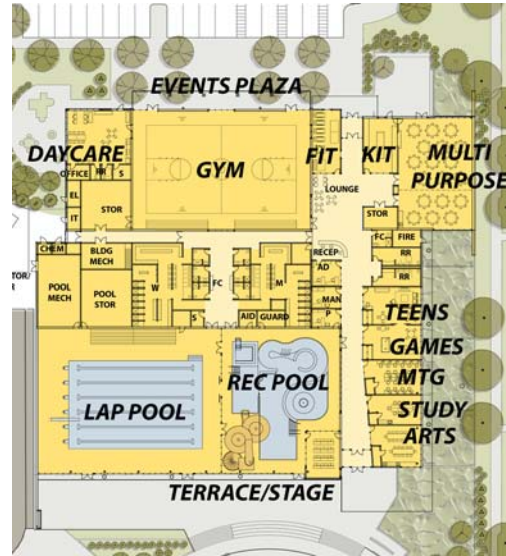
Rainier Beach HS

Rainier Beach CC Existing Site Images

alr|c ARCHITECTS

Schematic Design

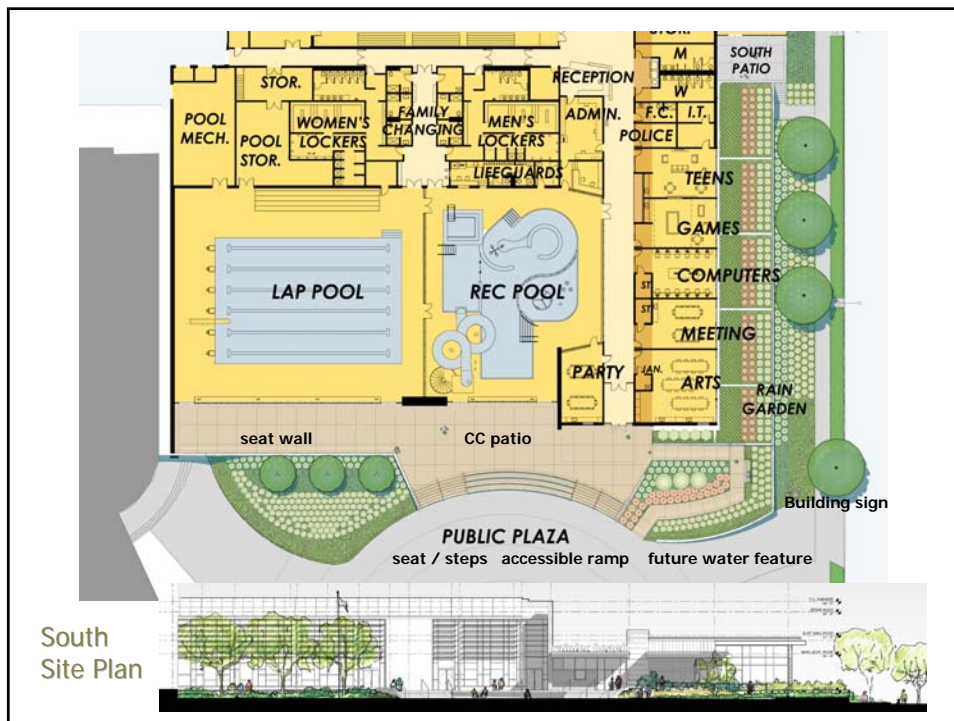
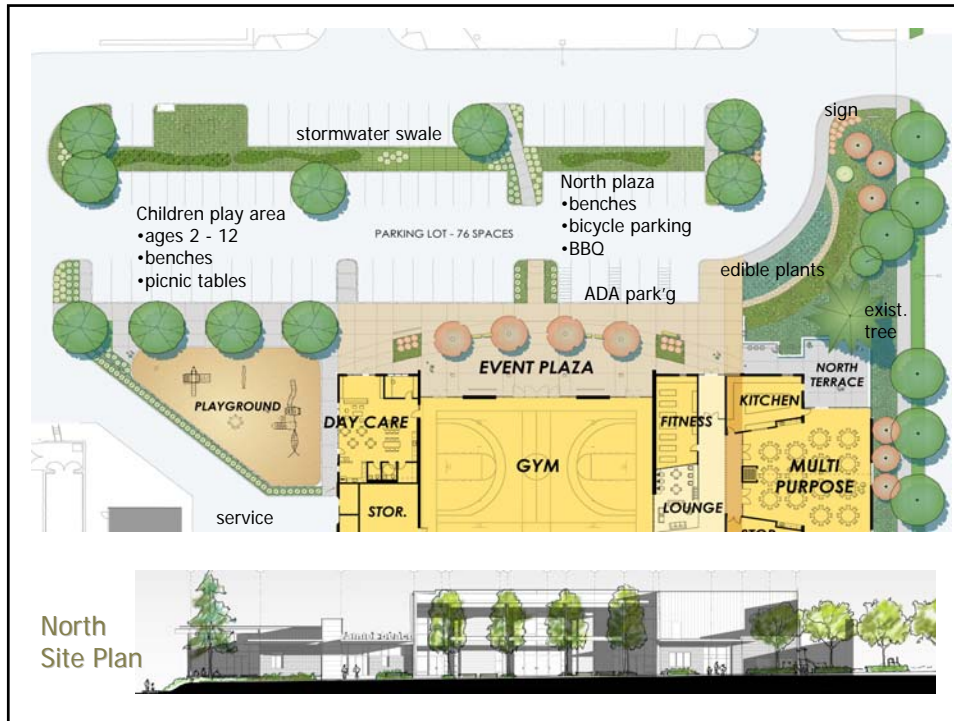
Where we were...

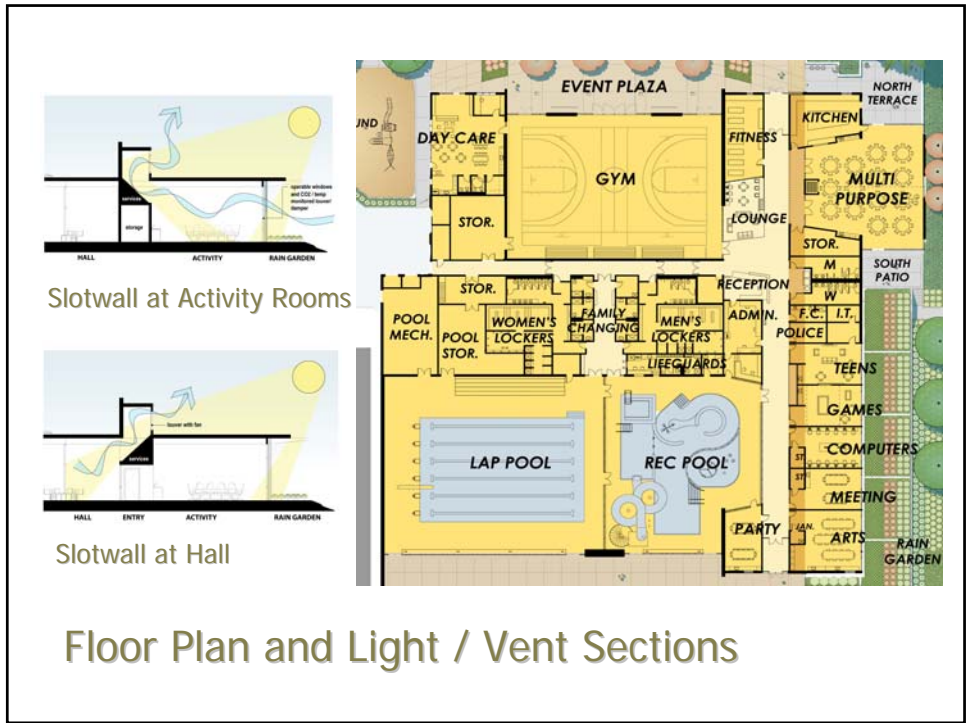


PROJECT UPDATES

- Entrances are more prominent
- Material & form relationships more clear
- The slot wall extends the length of the building
- Multipurpose room is more visually connected to Rainier
- Multipurpose Room ceiling and roof construction similar to the activity rooms
- Sustainable design features expressed, including solar hot water panels.









View from Northeast



View from Southeast



North Elevation



East Elevation



South Elevation



View of Reception from North



View of Multipurpose looking to Rainier Ave.



View of Main Corridor looking North



View of Gym looking to Lobby



View of Gym looking to North Plaza

