

Mercer Corridor Project

June 19, 2008

mercercorridorproject

Presentation Overview

- Introduction
- Urban Design – Streetscape & Lighting
- Urban Design - Landscaping
- Art
- Schedule
- Questions?

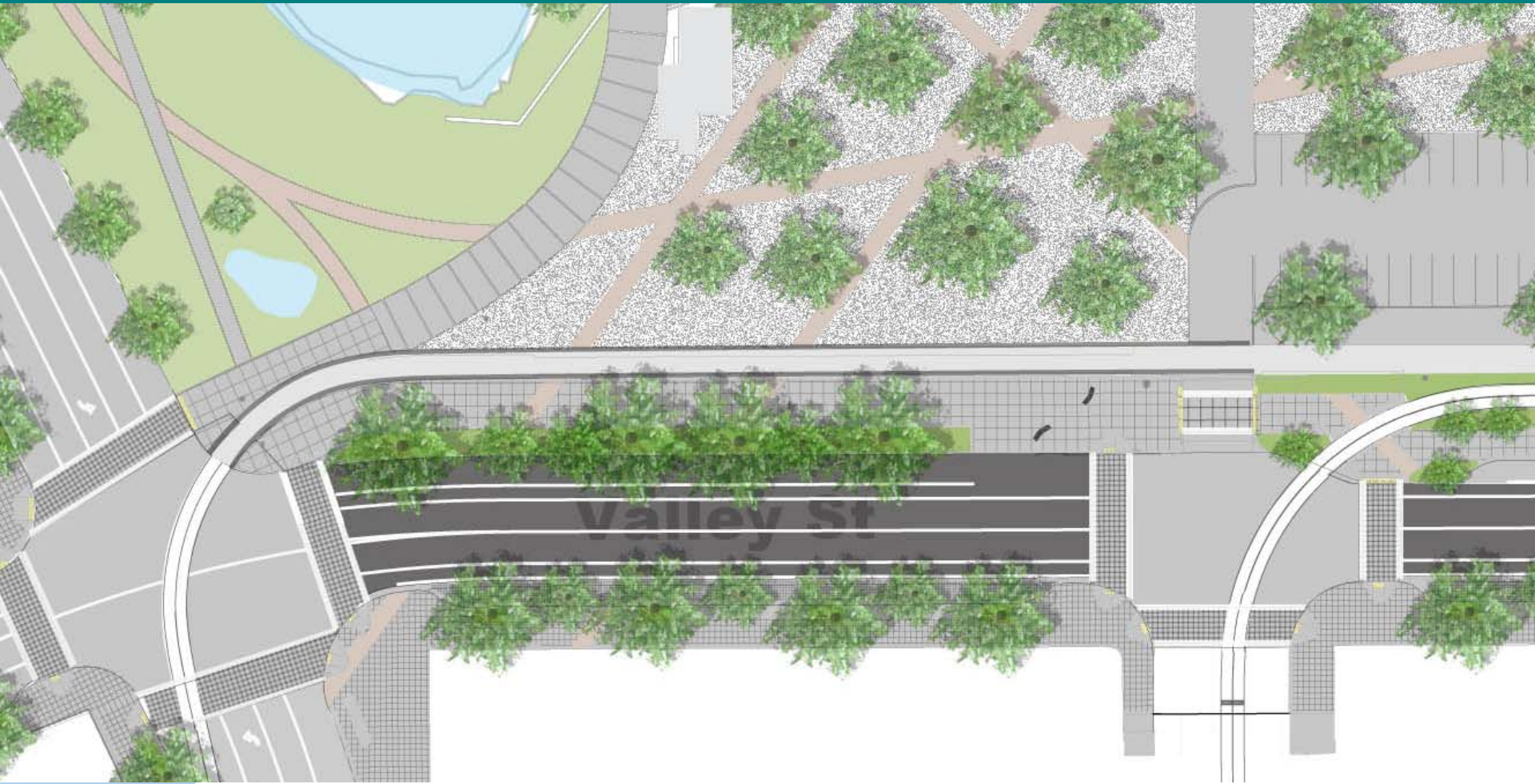
The map illustrates the proposed light rail alignment through downtown Seattle. Key features include:

- Streets:** Aurora Ave N, 8th Ave N, Valley St, Mercer St, Republican St, and Harrison St.
- Neighborhoods:** Queen Anne, Fremont Interbay, Eastlake, Capitol Hill, and Downtown.
- Landmarks:** Seattle Center, Capitol Hill, and Downtown.
- Orientation:** A north arrow is located in the bottom left corner.



Seattle Department of Transportation

Valley Street Frontage Design



mercercorridorproject

Valley St . Lighting Alternatives

Globe



Flex



Pollux



Cost (incl. pole)**
(do not include foundation)

\$ 2,800

\$3,045

\$ 4,325

Dark Sky Compliant

Partial cut off

Full cut off

Partial cut off*

* due to 10 degree tilt

Energy Efficient

Yes (70 W HPS)***

Yes (70 W HPS)

Yes (70 W HPS)

mercercorridorproject



** cost is for single lamp fixture

*** 165W required for Induction Lamps

Valley St. - Existing



mercercorridorproject

Valley St. - Proposed



mercercorridorproject

Mercer, Valley, Westlake, 9th Ave. – Chief Seattle Base

Typical Light Pole



Lighting - Pole Discussion

Measured Diameter

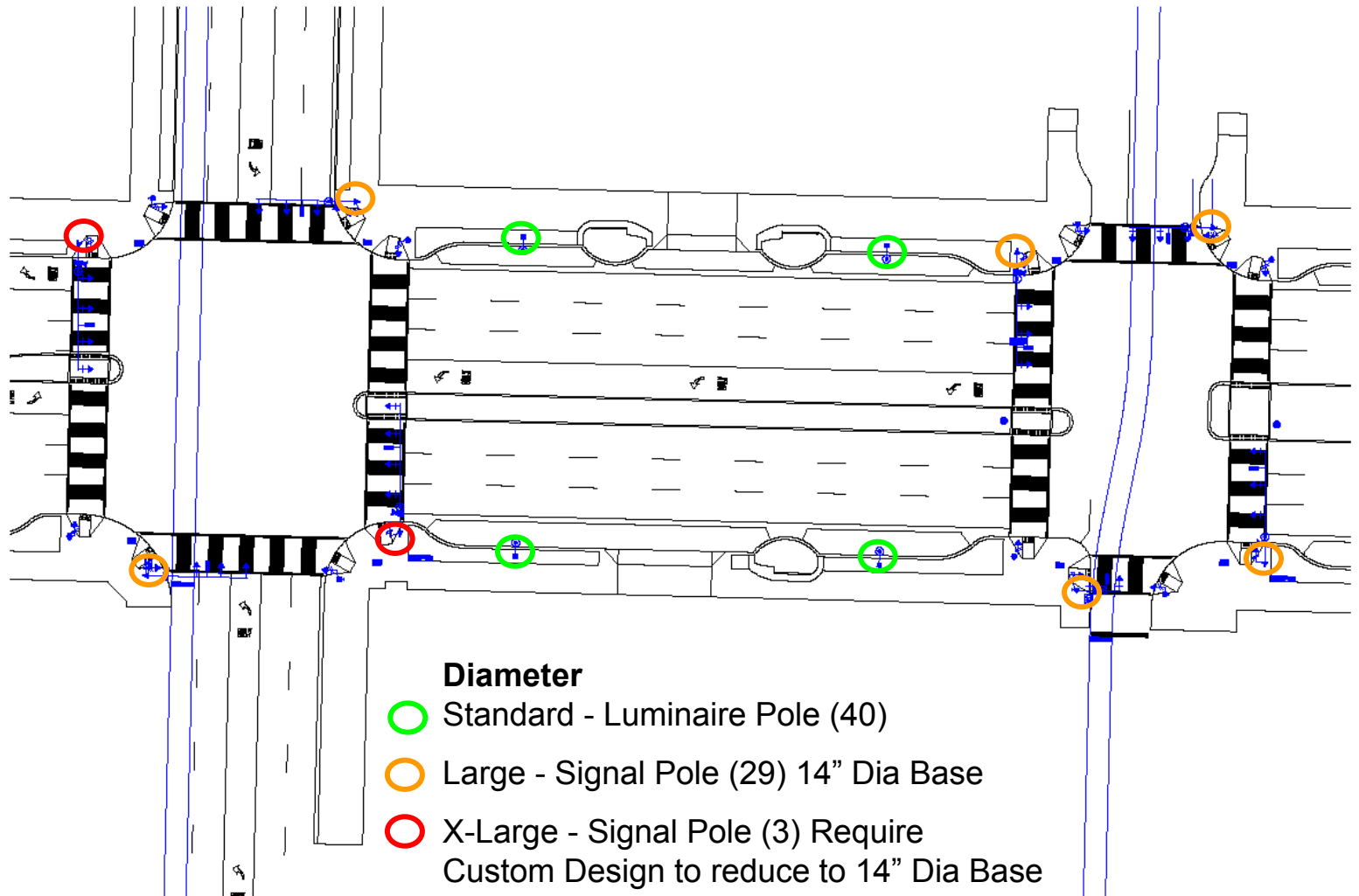


mid-block pole
10 inch



at intersection
12 inch

Mercer - Proposed Pole Diameter

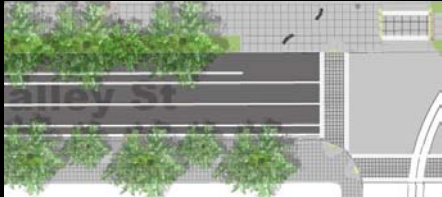


Urban Design Streetscape Summary

Valley/Park Paving



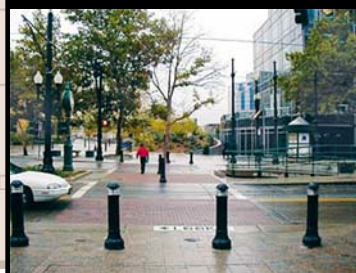
Valley Street Stone Benches



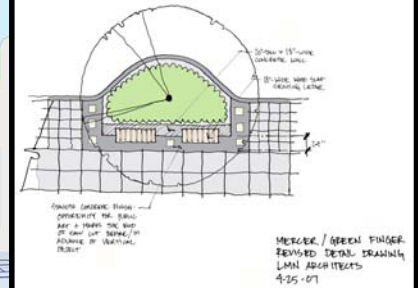
Valley Greenfingers



Bollards



Greenfinger Detail



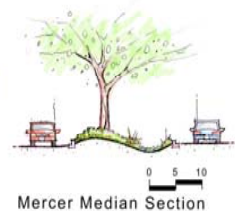
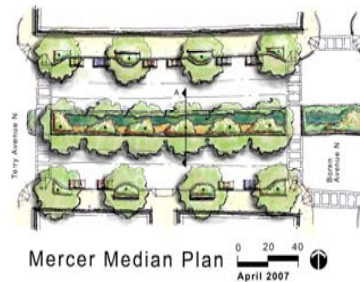
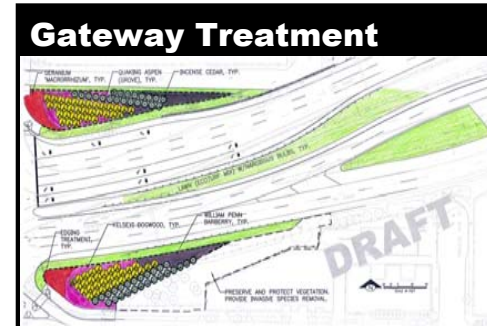
Column



mercercorridorproject

Urban Design Landscape Summary

- Urban Design: Planting
 - Gateway Treatment
 - Mercer Street Green Fingers
 - Mercer Street Wet Median
 - Westlake Raingarden
 - Valley Integration with Park



Tree Selections

LEGEND:

- NORWAY MAPLE
- 'SUMMIT' GREEN ASH
- LONDON PLANE TREE
- QUAKING ASPEN
- TALL STEWARTIA
- INCENSE CEDAR
- FRONTIER ELM
- ATHENA ELM
- ALLEE ELM
- ACCOLADE ELM
- SCARLET OAK
- EDDIE'S WHITE WONDER DOGWOOD
- NORWEGIAN SUNSET MAPLE



mercercorridorproject

Art Proposal

Preferred Alternative
28' h x +/-4' diameter

Stainless steel
Proposed as 10 guage
5.67 lb/sq ft.

Column has openings in between
each unit and is welded together at
the top and bottom of each as illus-
trated below.



Lighting is internal and
appears to emanate through the
openings and from the top (casting
light above the column)

Base is the same pattern as body
but is an open framework
Option 1-base is 5' h (3 rows
of framework)

1/4" = 1'



mercercorridorproject

Boren Ave N at Mercer St – Before



mercercorridorproject

Boren Ave N at Mercer St – After



mercercorridorproject

Schedule

- 90% Complete Design: 2nd Qtr. 2008
- 100% Complete Design: 3rd Qtr. 2008
- ROW Acquisition Complete: 2nd Qtr. 2009
- Start Construction: Summer 2009
- Construction Complete: Summer 2012



Valley



Mercer

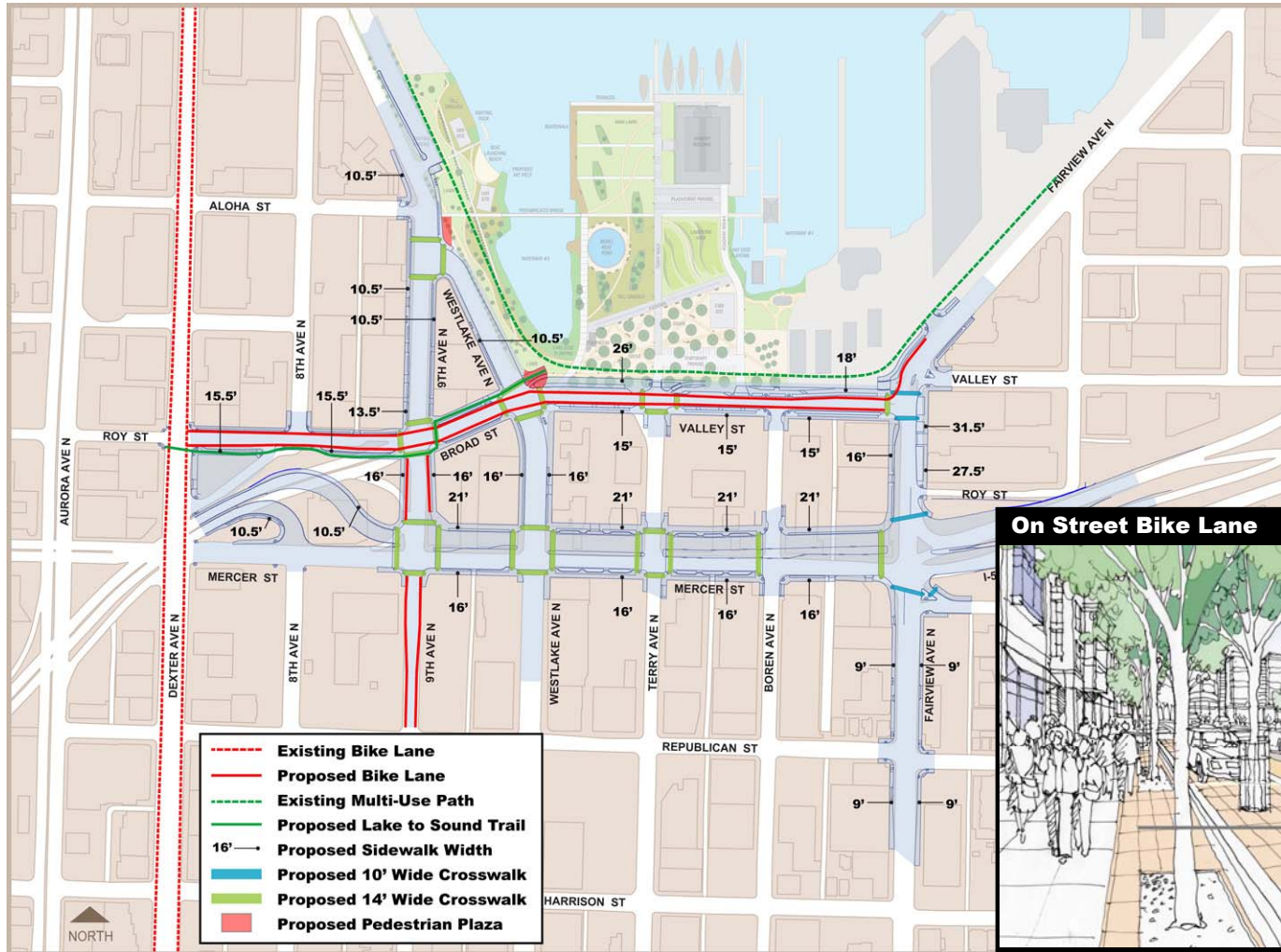
Thank You

Email: Angela.Brady@Seattle.gov

www.seattle.gov/transportation/ppmp_mercer.htm

mercercorridorproject

Bicycles and Pedestrians



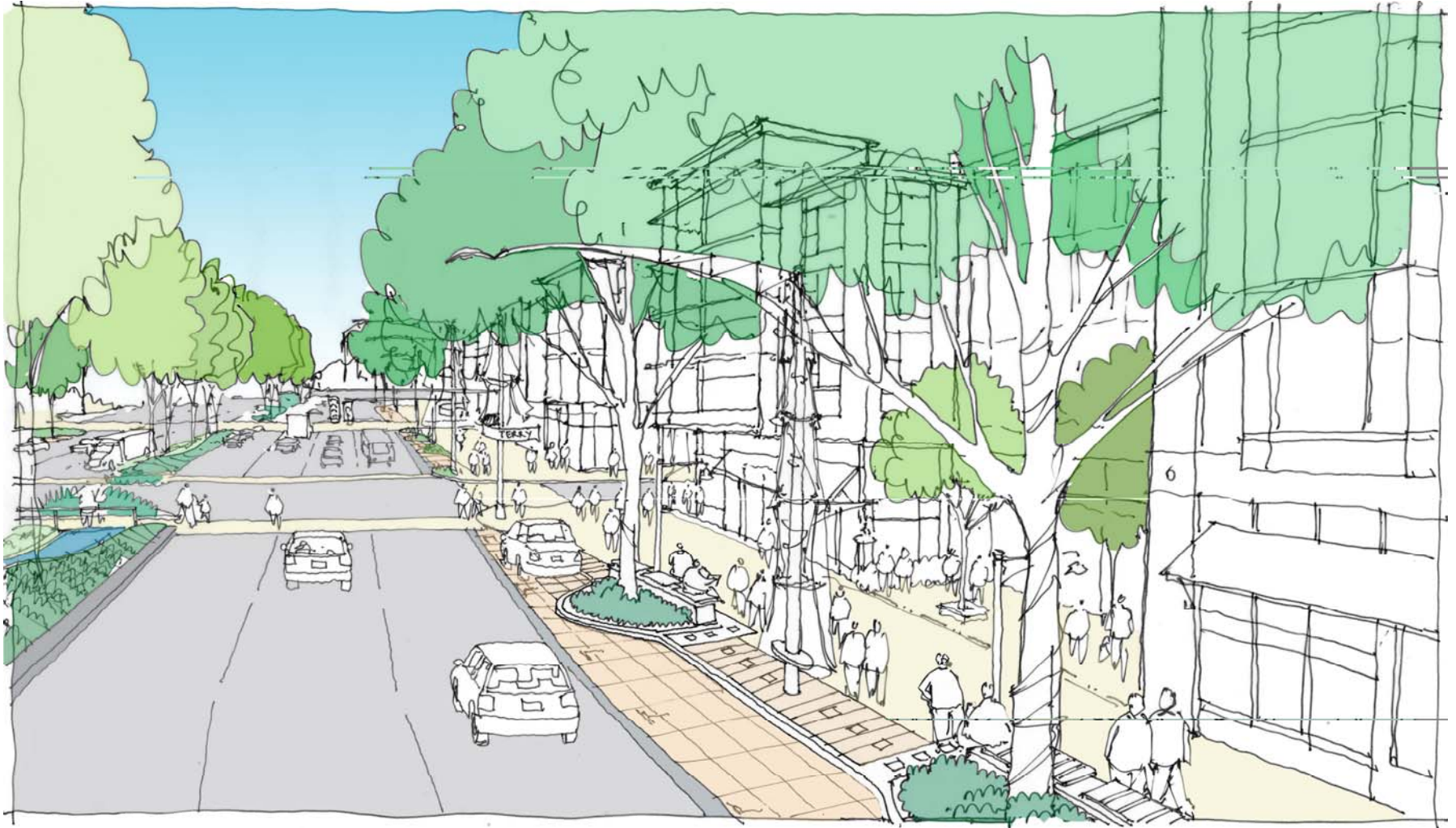
mercercorridorproject

Valley Street



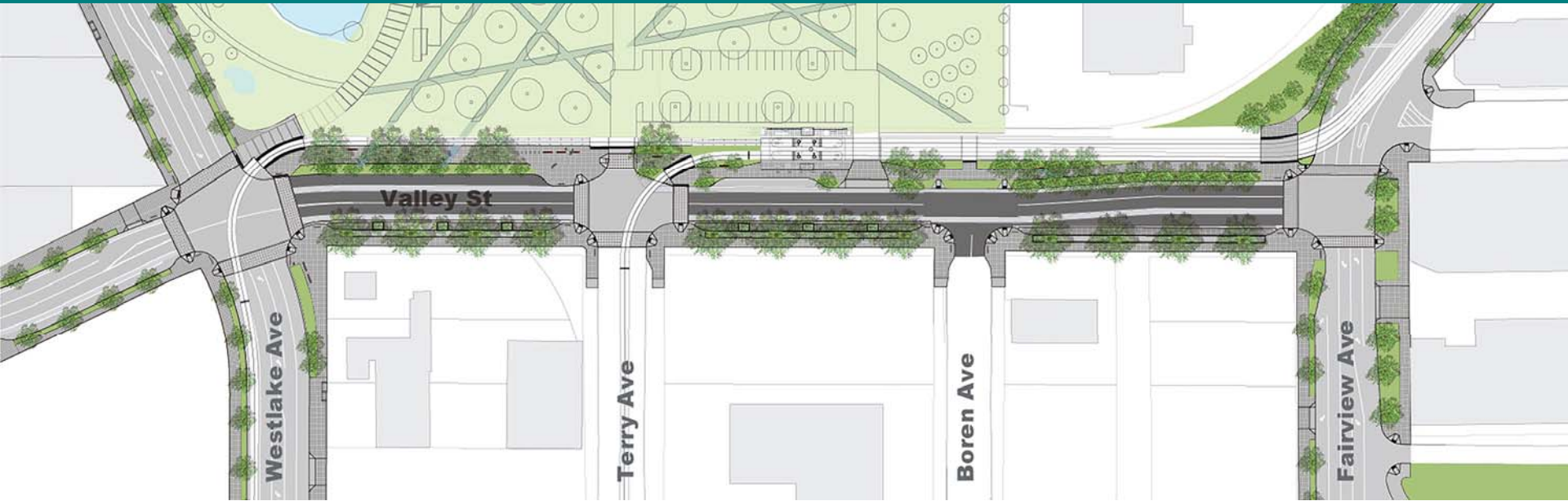
mercercorridorproject

Mercer Street



mercercorridorproject

Valley Street



- local, quiet, intimate street
- lakefront esplanade
- visually frames the park and extends it into the public realm
- south side has a more urban character in response to future buildings and storefronts
- dramatically tames the traffic, catering to pedestrians, cyclists and transit users
- trees and sidewalks claim part of the street, blurring the distinction between the pedestrian and vehicular realms
- a larger percentage of space is dedicated to pedestrians rather than the vehicles
- emulates a European street
- streetscape design creates a linear room

Mercer Street



- regionally oriented street, not local
- louder and more theatrical in nature
- greater width and greater volumes
- designed to be both a part of and apart from the neighborhood
- north and south connections are embraced
- reduce perceived width with design elements
 - green fingers
 - median
 - light poles
- median performs an aesthetic and environmental function
- “form follows function” but pedestrian realm is also addressed
- green fingers are a safety feature and allow for wider sidewalks
- pause points and crosswalks are unique features that increase pedestrian safety
- possible gateway feature

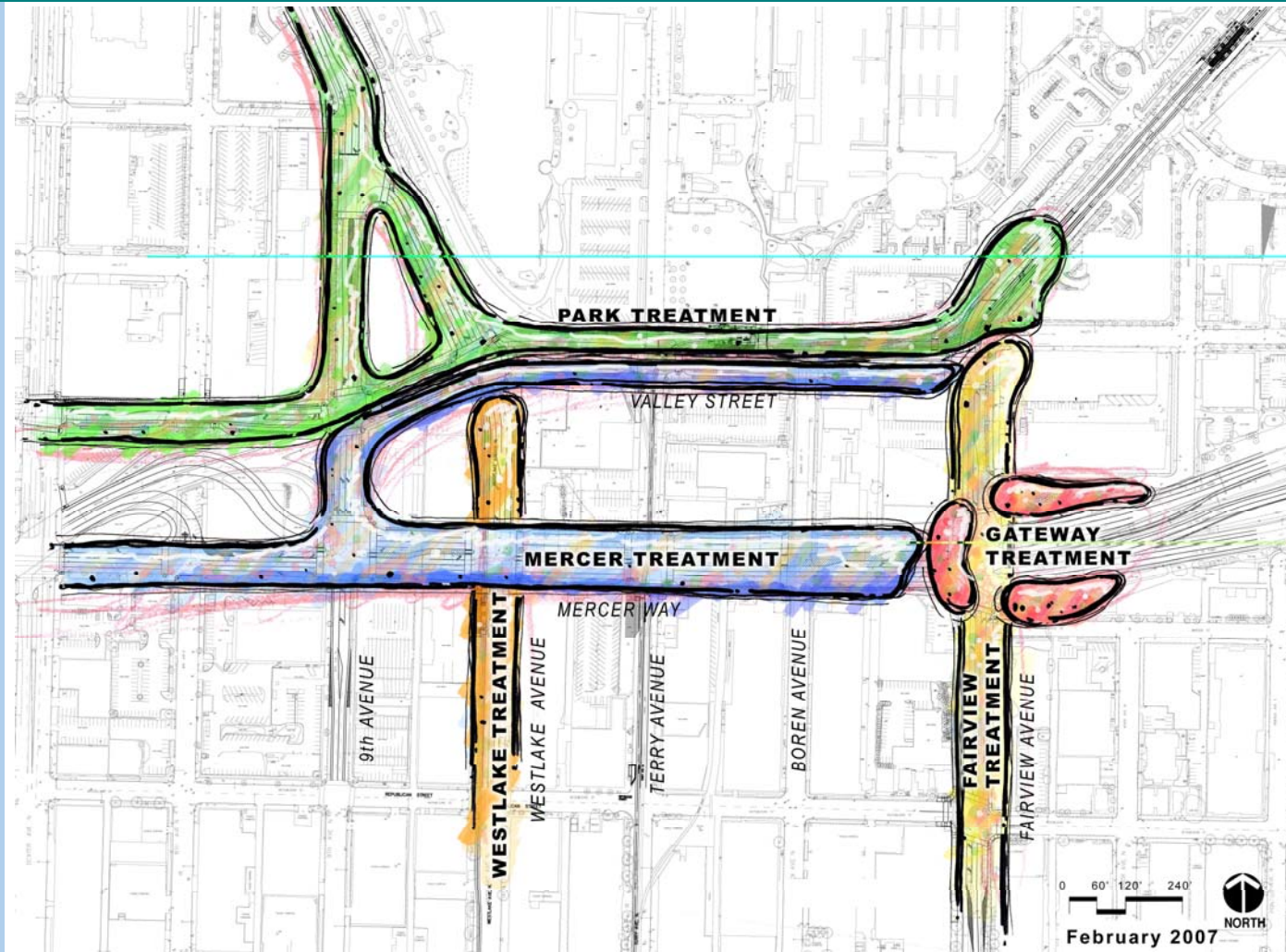
mercercorridorproject

Valley – Streetcar treatment



mercercorridorproject

Landscape Framework Plan



mercercorridorproject

Pole Color Discussion

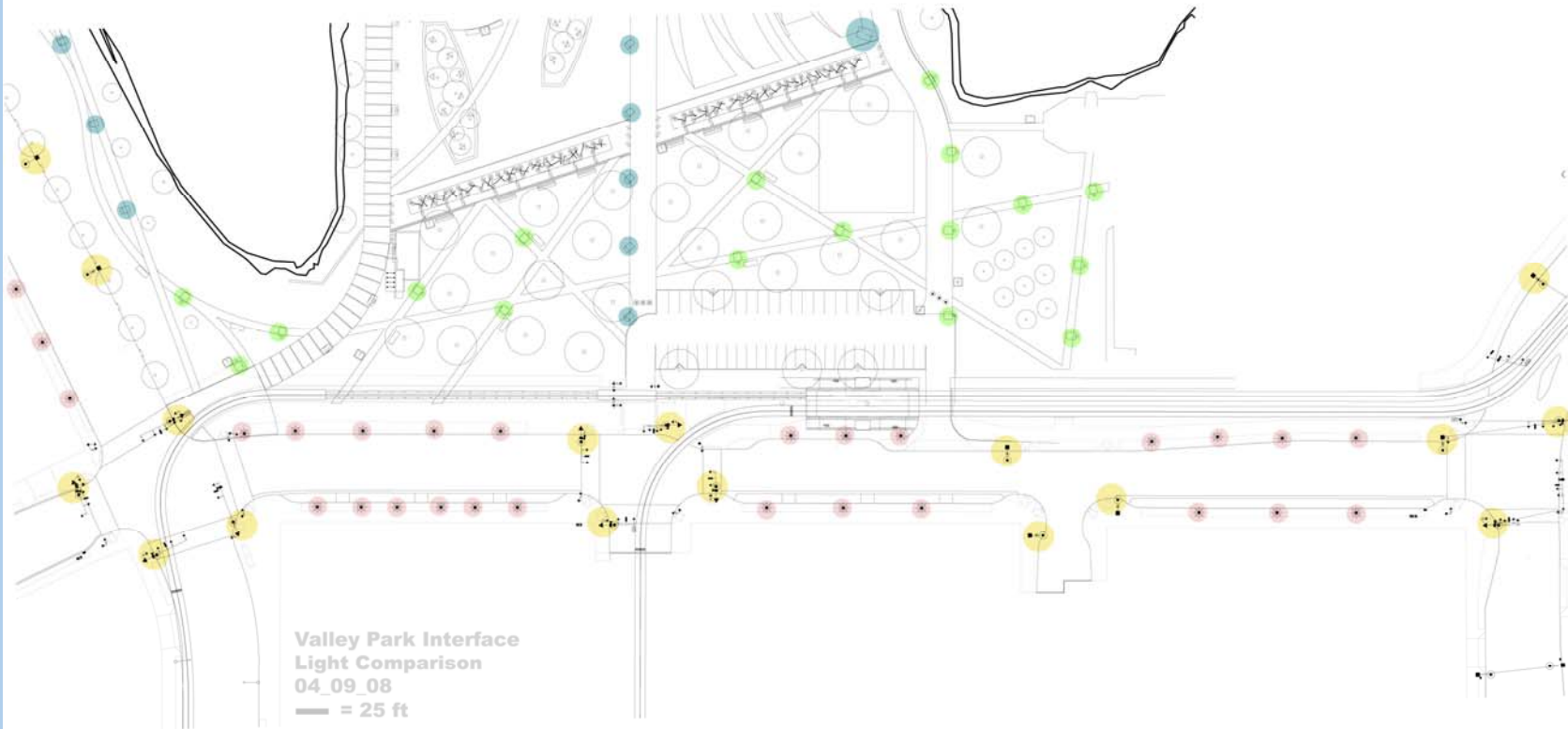


Black



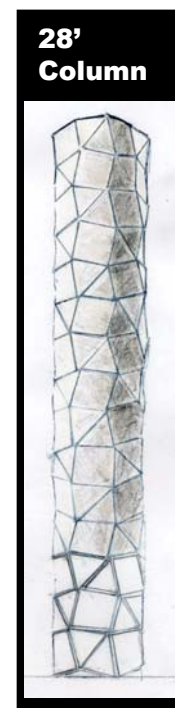
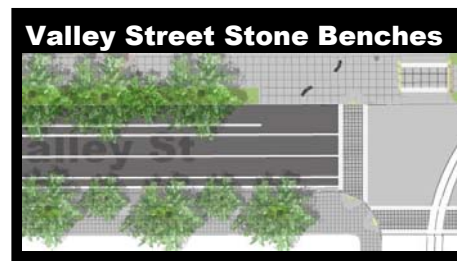
Silver

Park/Street Lighting Interface

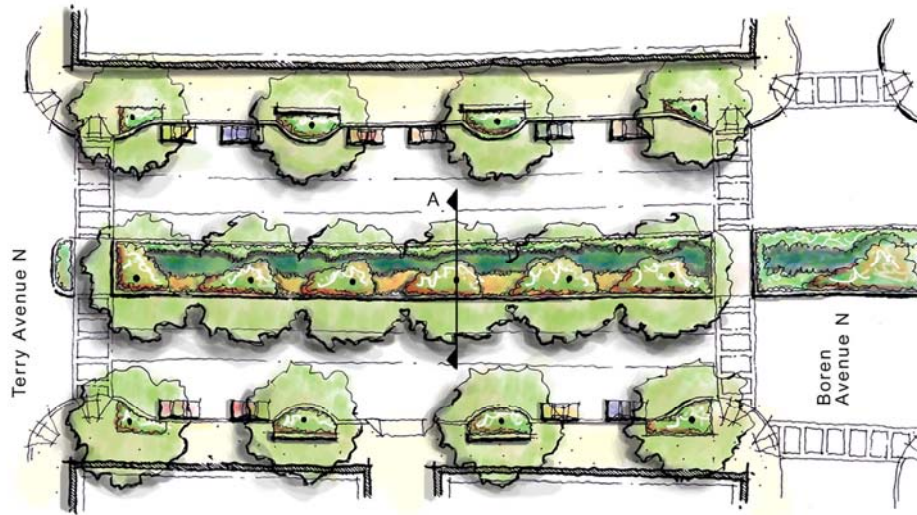


Urban Design Summary

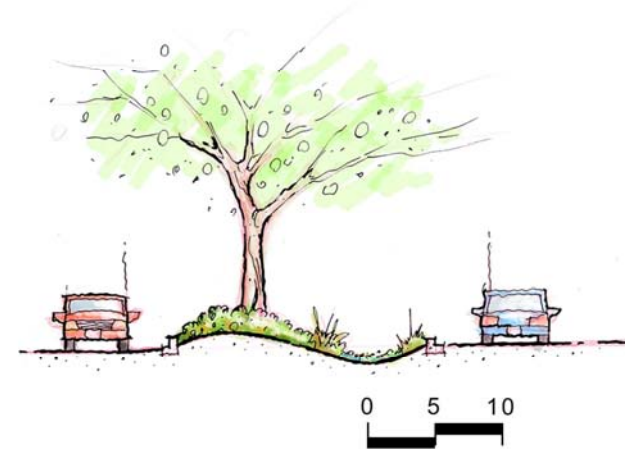
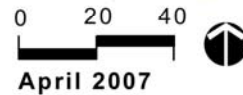
- Urban Design Category: Surface Feature
 - Valley integration with Streetcar and LU Park
 - Westlake Plaza
 - Sidewalk sawcut treatment
 - Amenity zone pavers
 - Parking area scoring
 - Mercer/Valley Crosswalk treatment
- Urban Design Category: Special Features
 - Valley Street Stone Benches
 - Mercer/Boren 28' Tessellated Column
 - Street Name Inlay



Sustainable Design: Wet Median



Mercer Median Plan



Mercer Median Section



mercercorridorproject

Sustainable Design: Rain Garden

