



SWEDISH FIRST HILL MEDICAL CENTER STANDING ADVISORY COMMITTEE

MEETING NO.5 - 20 JANUARY 2016

PERKINS+WILL | SiteWorkshop

AGENDA

Introduction and Update

Boren Ave Feature Wall

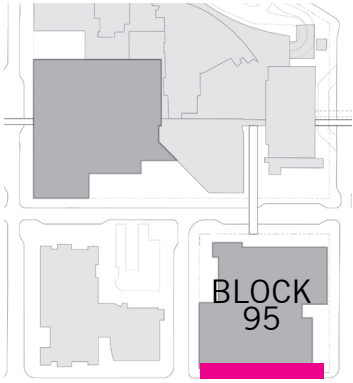
Boylston Triangle

Public Benefits Review

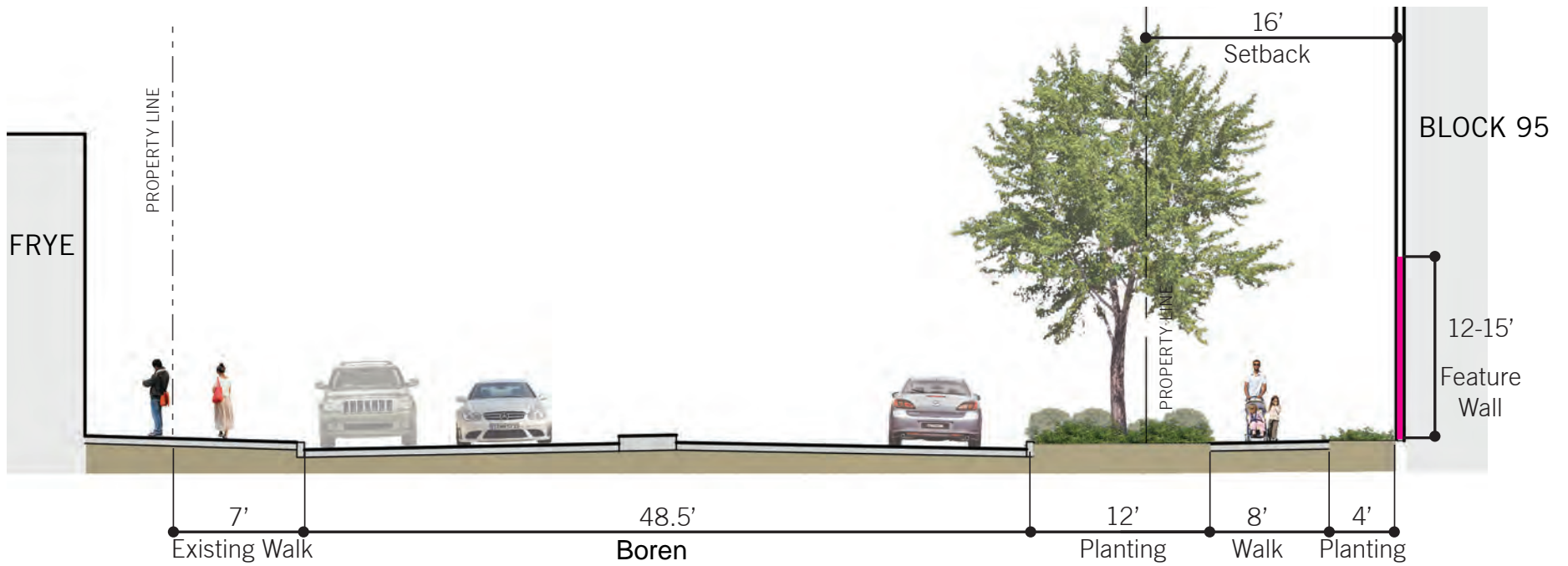


BOREN AVE FACADE

BLOCK 95 - BOREN AVENUE



BLOCK 95 - BOREN AVENUE



BOREN AVENUE (66' ROW)

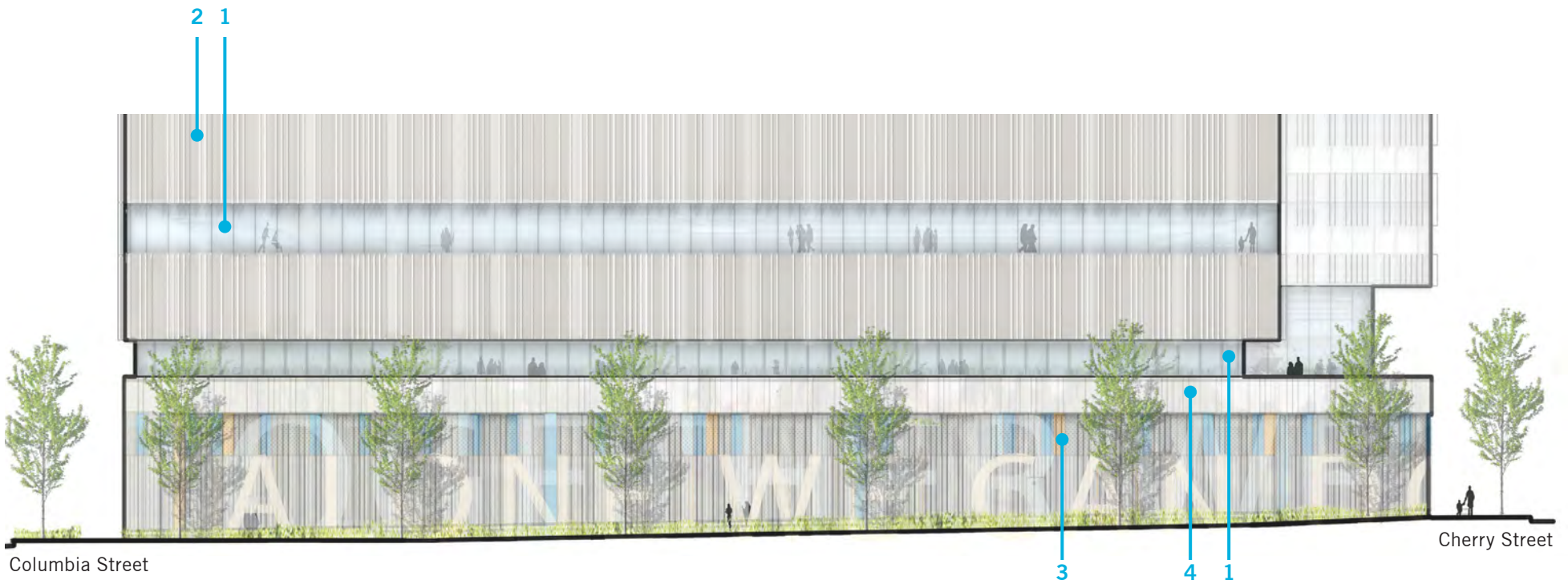
BLOCK 95 - BOREN AVENUE



DESIGN CRITERIA

- Develop artwork with multiple viewing modes:
Street View, Pedestrian View, and Day/Night Visibility
- Reflect the neighborhood character through the use of multi-dimensional, timeless content emphasizing holistic health of the self and community
- Build interest and warmth into the street without compromising driver focus

BLOCK 95 - BOREN AVENUE



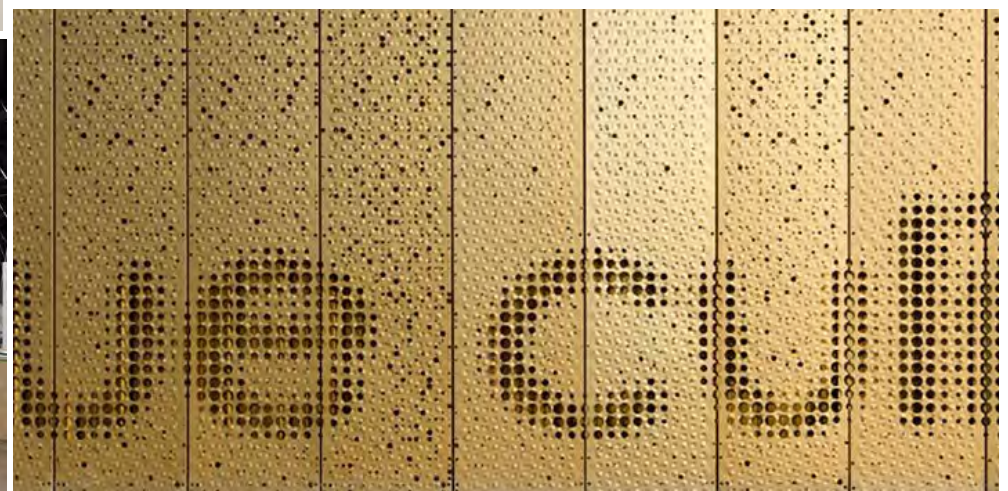
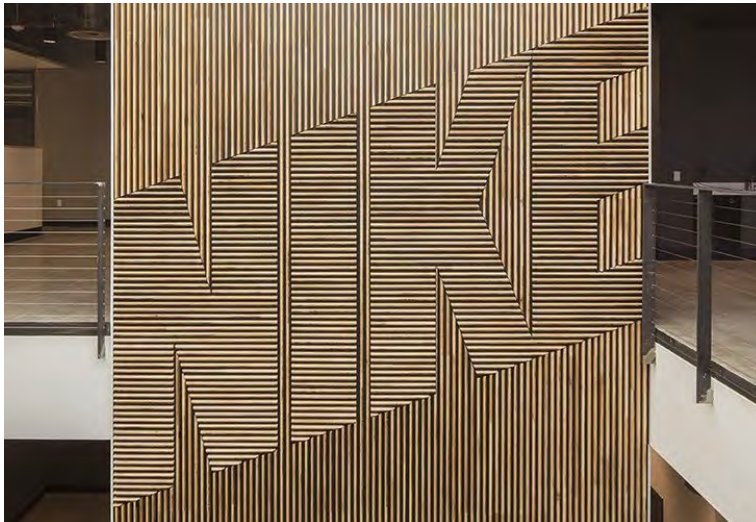
- 1 Glass
- 2 Metal Panel
- 3 Louver Grille
- 4 Precast Concrete

BLOCK 95 - BOREN AVENUE

FEATURE WALL

STREET VIEW

Images visible from the street, at speeds up to 35mph

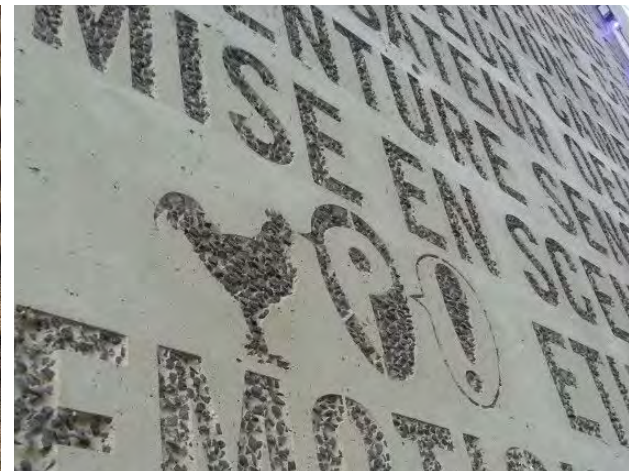
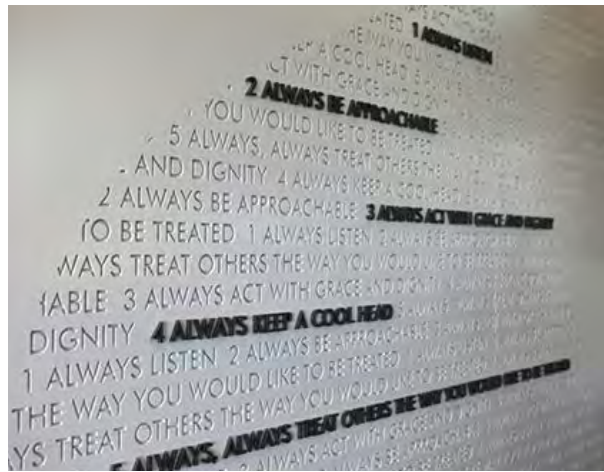


BLOCK 95 - BOREN AVENUE

FEATURE WALL

PEDESTRIAN VIEW

Art also at scale for pedestrian discovery

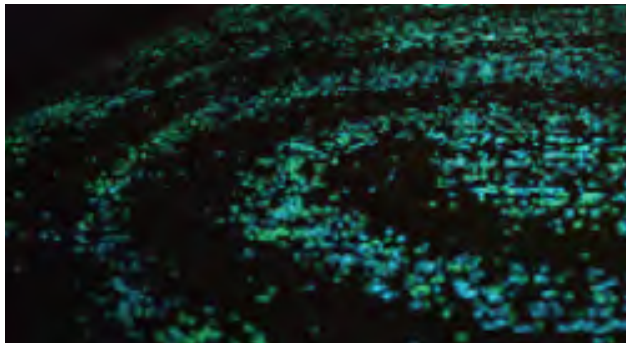
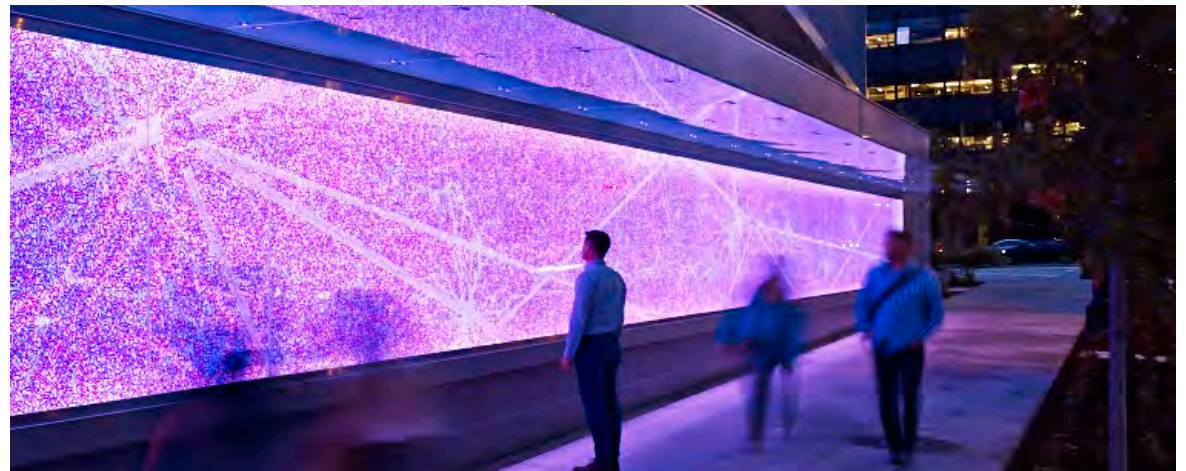


BLOCK 95 - BOREN AVENUE

FEATURE WALL

DAY / NIGHT VISIBILITY

Light, both natural or otherwise, affects the artwork composition



BLOCK 95 - BOREN AVENUE

FEATURE WALL

INTEREST / WARMTH

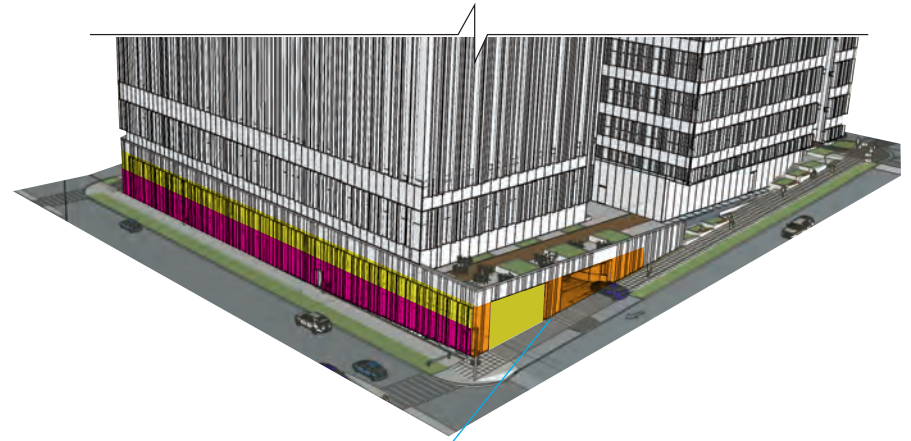
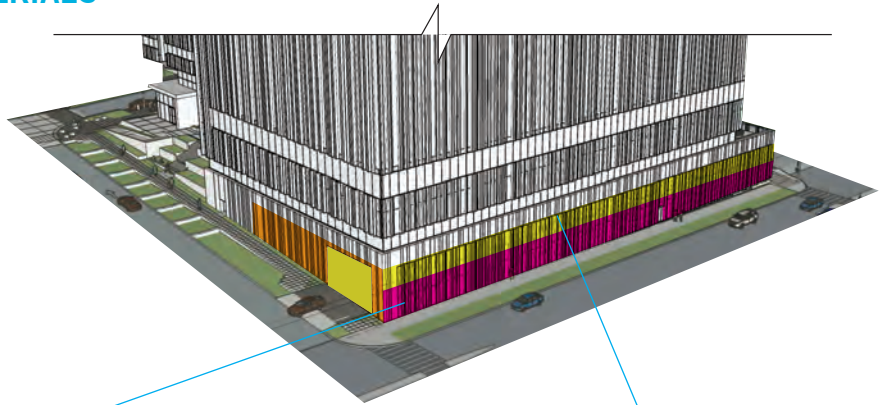
Create vibrant art corridor with Frye Art Museum



BLOCK 95 - BOREN AVENUE

FEATURE WALL

MATERIALS



A

FOCAL WALL

Multi-dimensional artwork visible from both pedestrian and street views

B

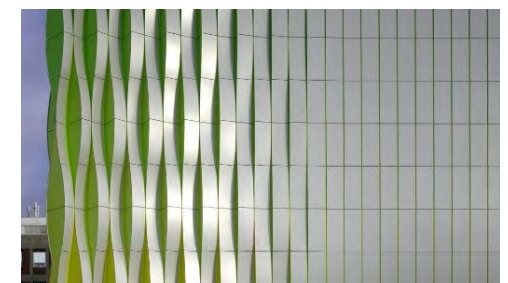
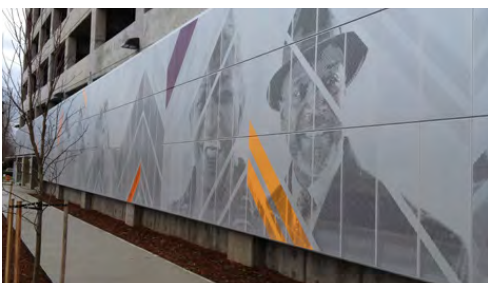
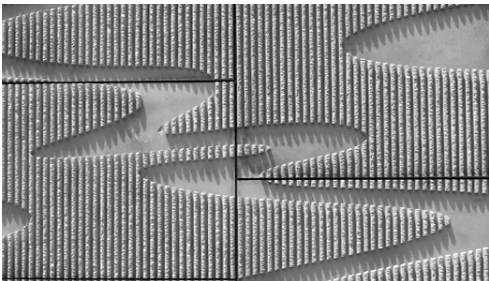
VENTILATION

Art reaches above and allows for proper air-flow

C

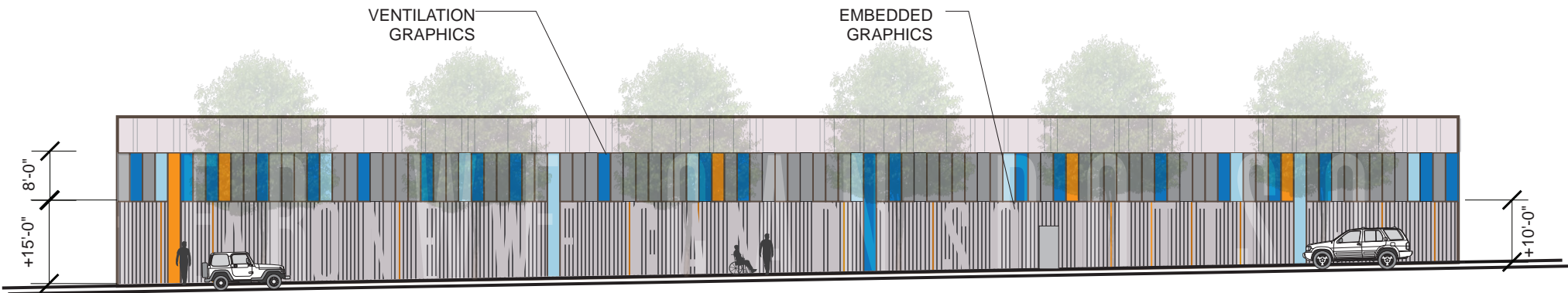
EXTENSION OF ART

Focal wall art fades away in



BLOCK 95 - BOREN AVENUE

FEATURE WALL



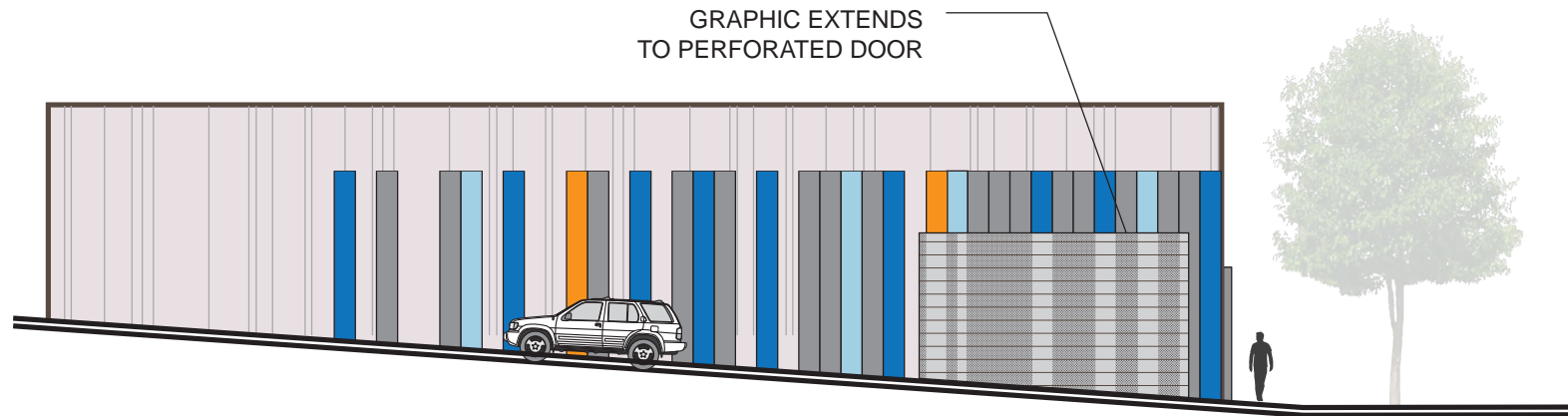
BOREN ELEVATION - DAY TIME (BOREN AVE)
SCALE: NTS



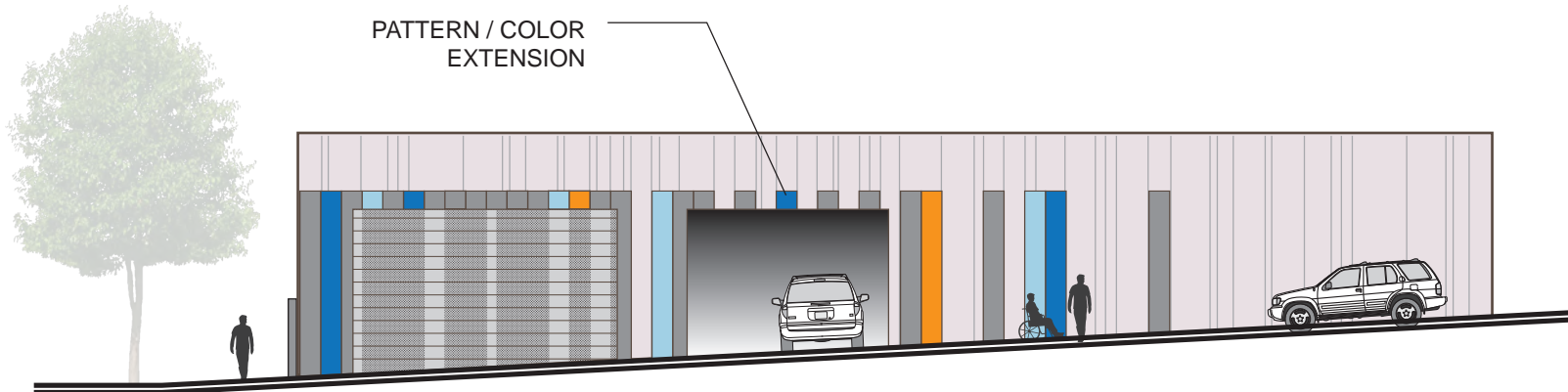
BOREN ELEVATION - NIGHT TIME (BOREN AVE)
SCALE: NTS

BLOCK 95 - BOREN AVENUE

FEATURE WALL



COLUMBIA ST. ELEVATION
SCALE: NTS

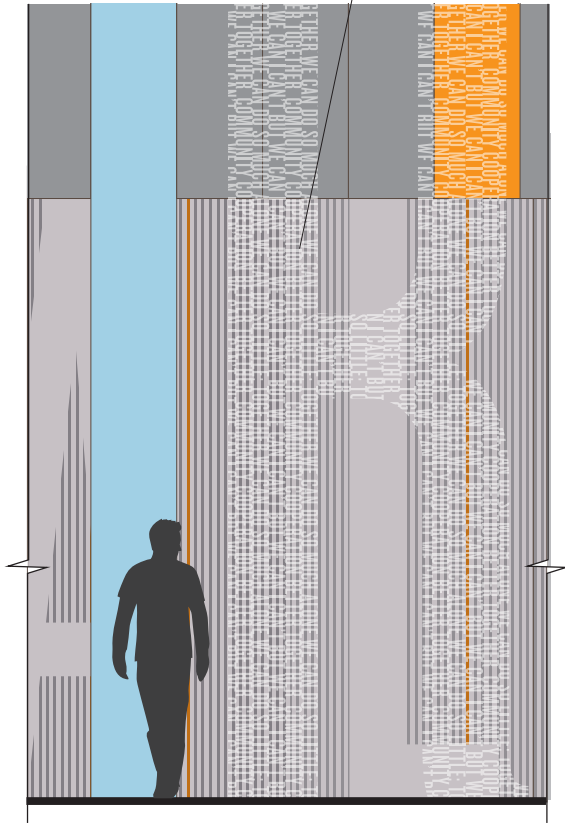


CHERRY ST. ELEVATION
SCALE: NTS

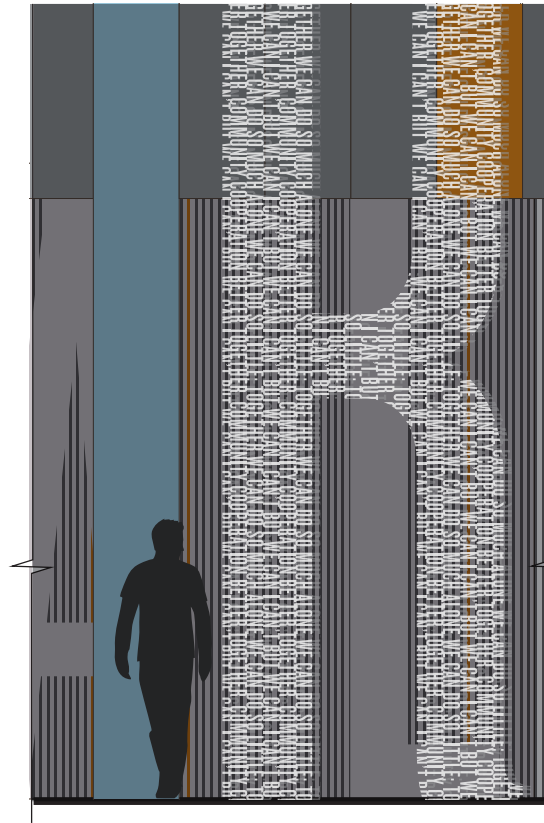
BLOCK 95 - BOREN AVENUE

FEATURE WALL

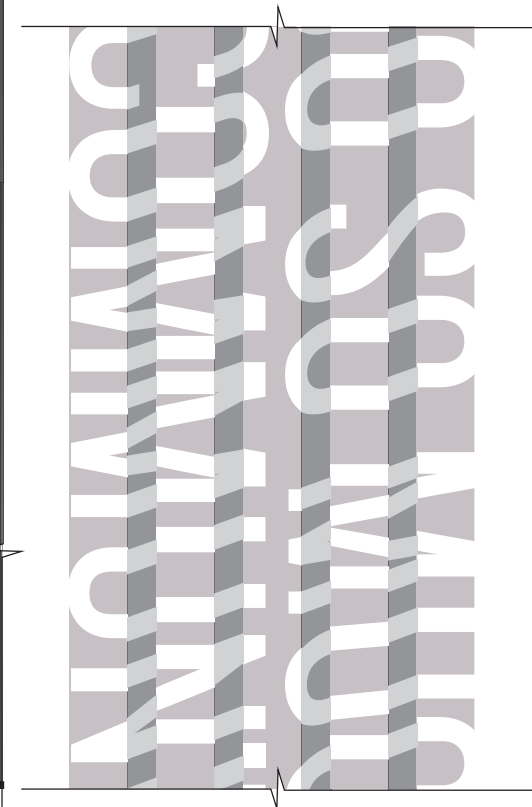
GRAPHIC/TEXT
AT PEDESTRIAN
SCALE



DETAIL - DAY
SCALE: 1/4" = 1'-0"



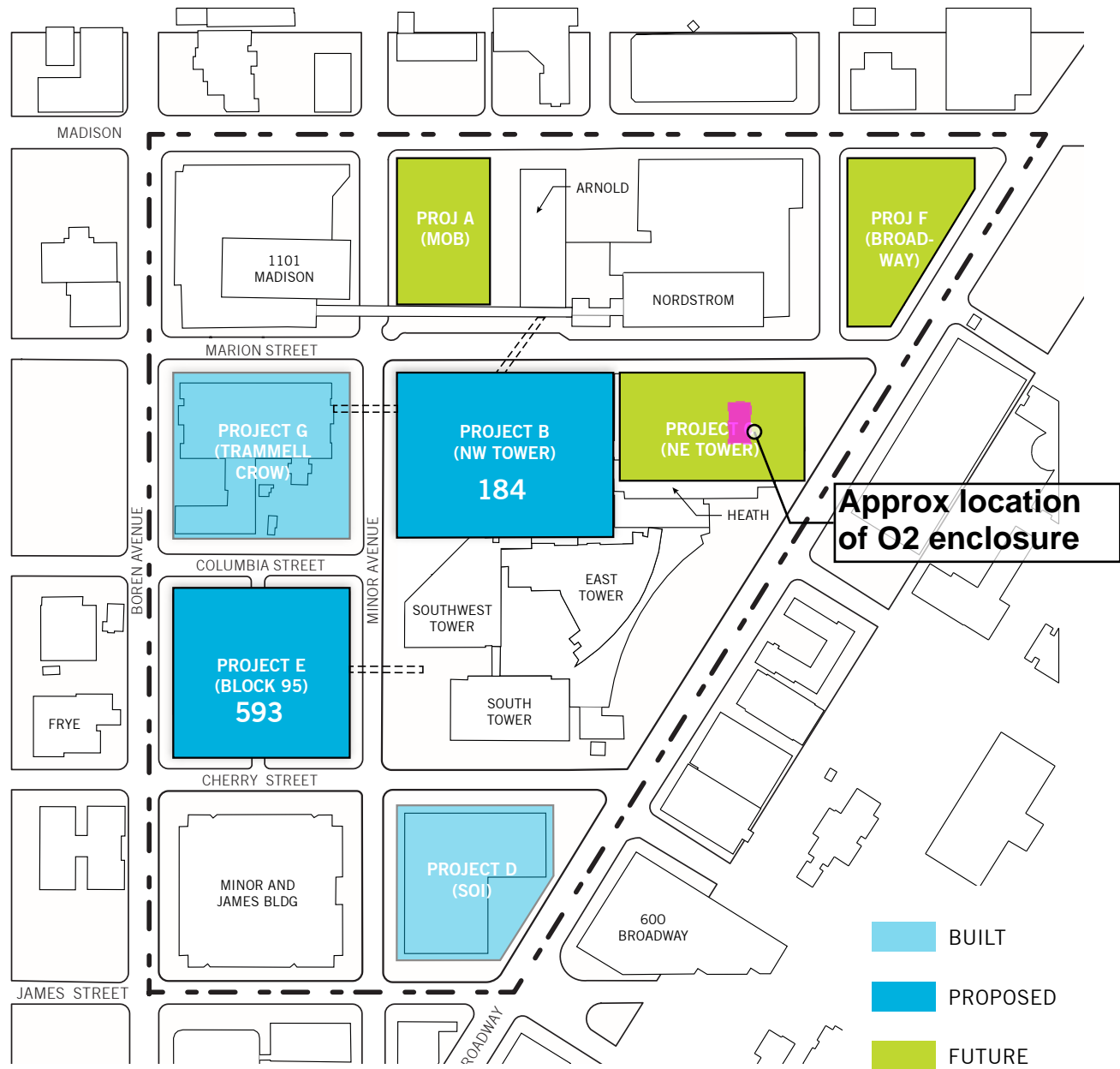
DETAIL - NIGHT
SCALE: 1/4" = 1'-0"



DETAIL
SCALE: 3" = 1'-0"

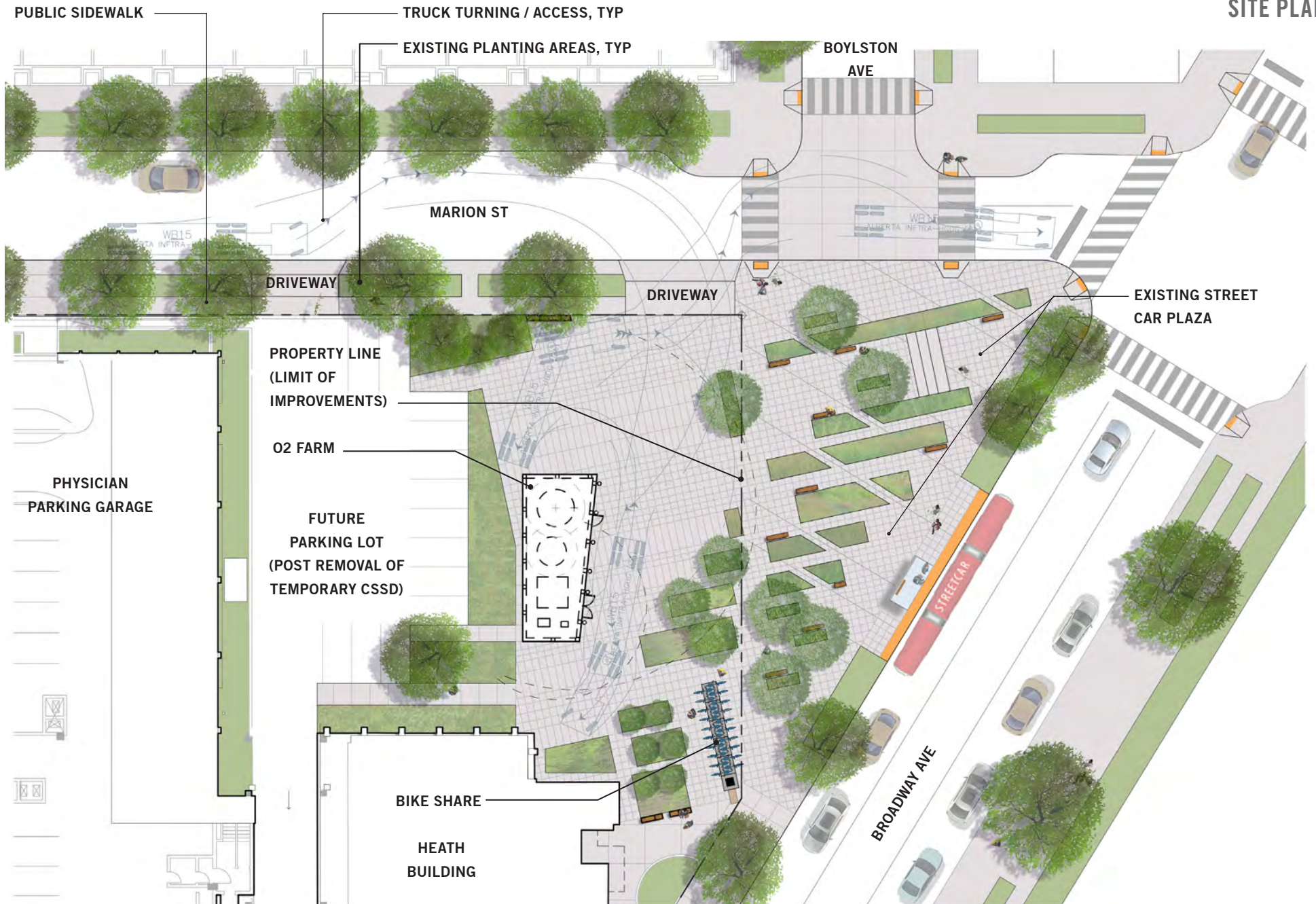
BOYLSTON TRIANGLE

MIMP PROJECTS



BOYLSTON TRIANGLE

SITE PLAN



APPLICABLE MIMP STANDARDS

Design Standards

- Height - 36' screen is under 240' limit
- FAR, Lot Coverage, Parking all measured campus-wide and not impacted

Design Guidelines

- Differentiate individual building designs to be memorable and unique
- Enhance street life quality, such as with landscaping

Council Conditions

- The SAC shall review and evaluate all proposed projects prior to MUP submission

MIMP EIS Conditions

- Pedestrian level building and streetscape improvements enhance the pedestrian experience
- Artwork, lighting, landscaping, and graphics that reduce building scale

DESIGN CRITERIA

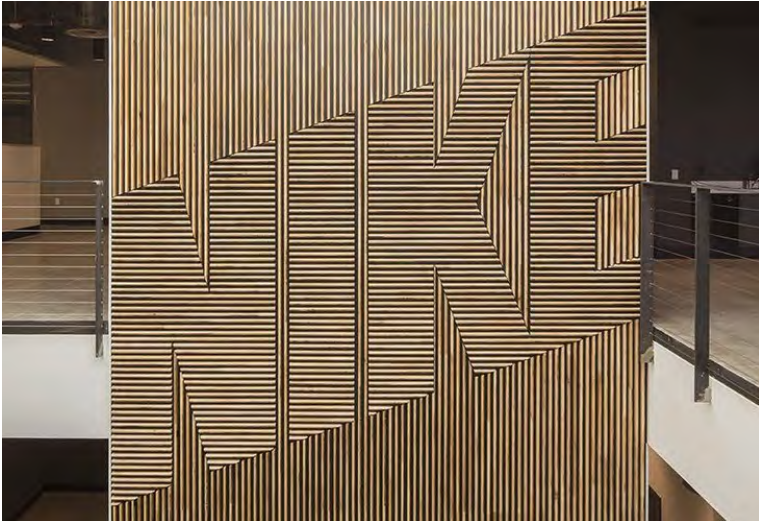
- Provide iconic image/message similar to Boren Avenue facade
- Reflect the Swedish Mile character through the use of color, form, and timeless content emphasizing holistic health of the self and community
- Develop artwork with multiple viewing modes:
20' Pedestrian View - 200' Street View, and Day/Night Visibility
- Build interest and warmth into the street without compromising driver focus

BOYLSTON TRIANGLE

SCREEN WALL

STREET VIEW

Images visible from the street, at speeds up to 35mph



BOYLSTON TRIANGLE

SCREEN WALL

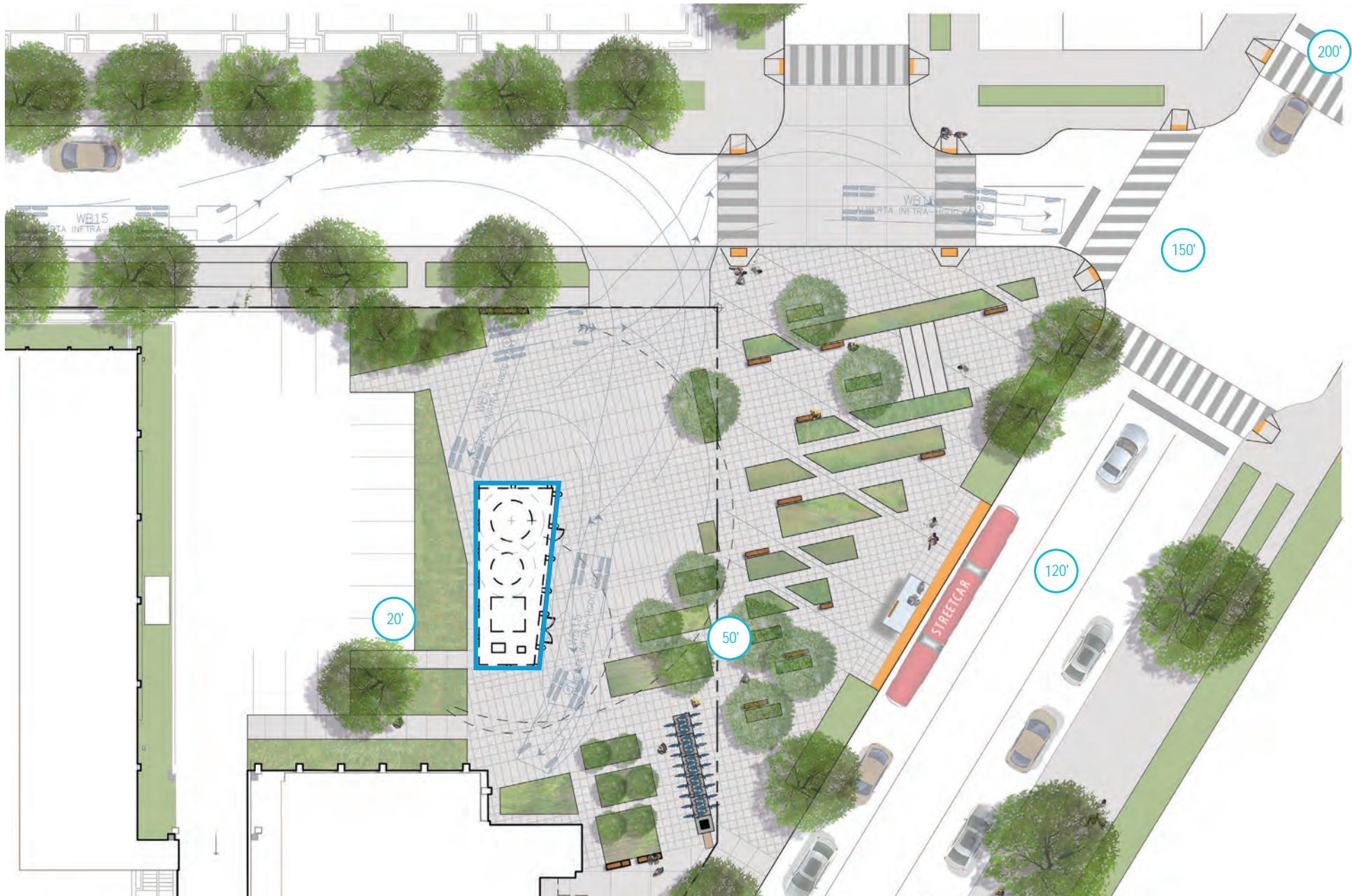
DAY / NIGHT VISIBILITY

Light, both natural or otherwise, affect the artwork composition



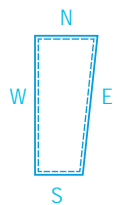
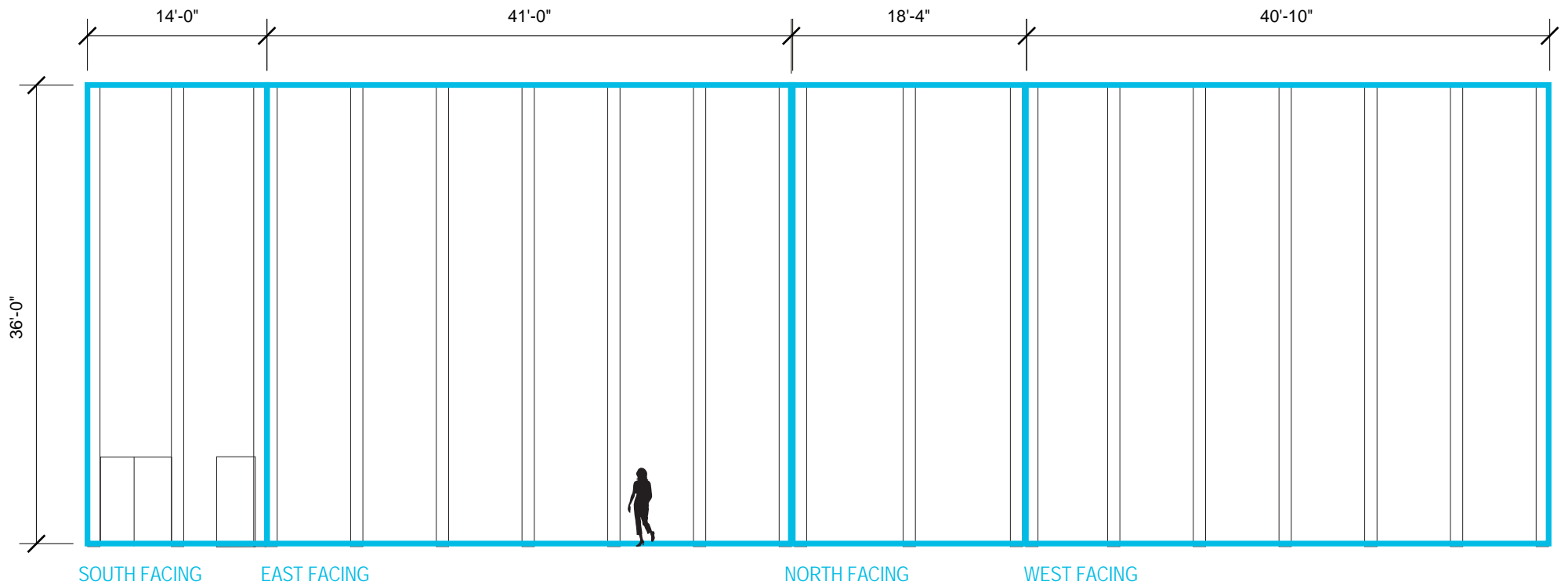
BOYLSTON TRIANGLE

SCREEN WALL



BOYLSTON TRIANGLE

SCREEN WALL



BOYLSTON TRIANGLE

SCREEN WALL



BOYLSTON TRIANGLE

SCREEN WALL



BOYLSTON TRIANGLE

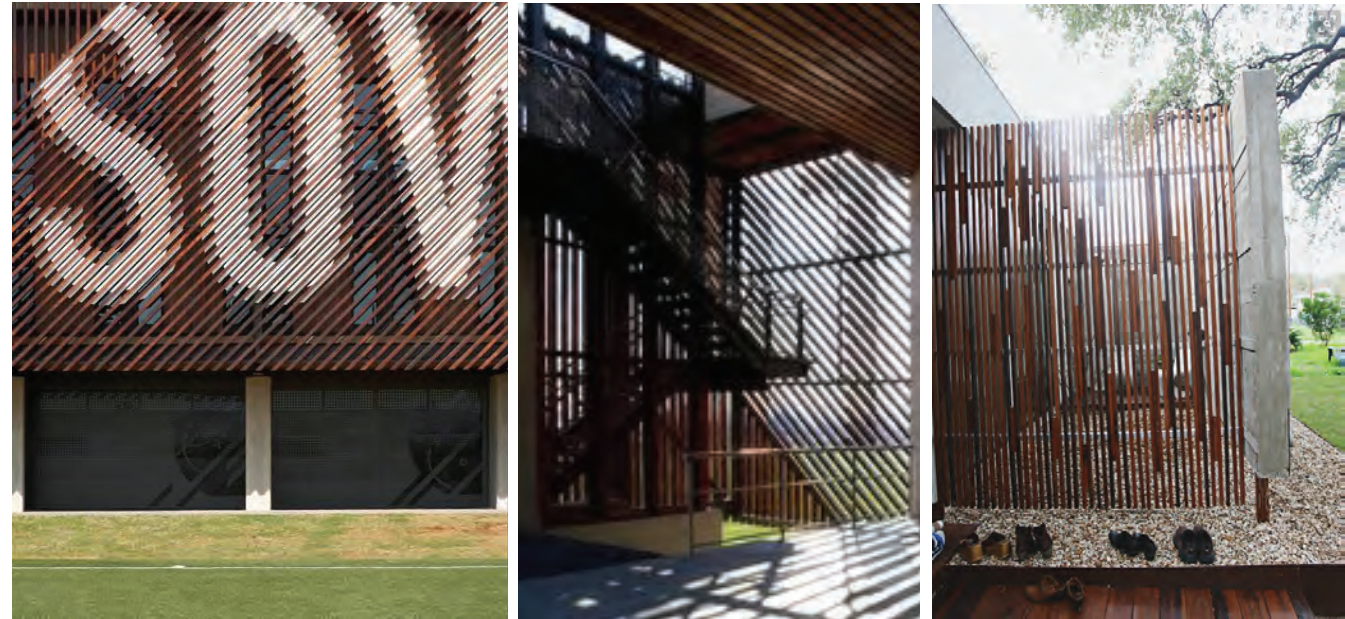
SCREEN WALL



BOYLSTON TRIANGLE

SCREEN WALL

VERTICAL SCREENS WITH VARYING THICKNESS



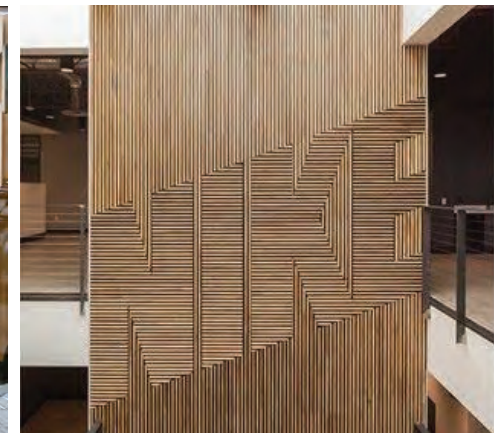
THICK LINES CREATE IMAGE/TEXT



VARYING SLAT DEPTHS/DISTANCES



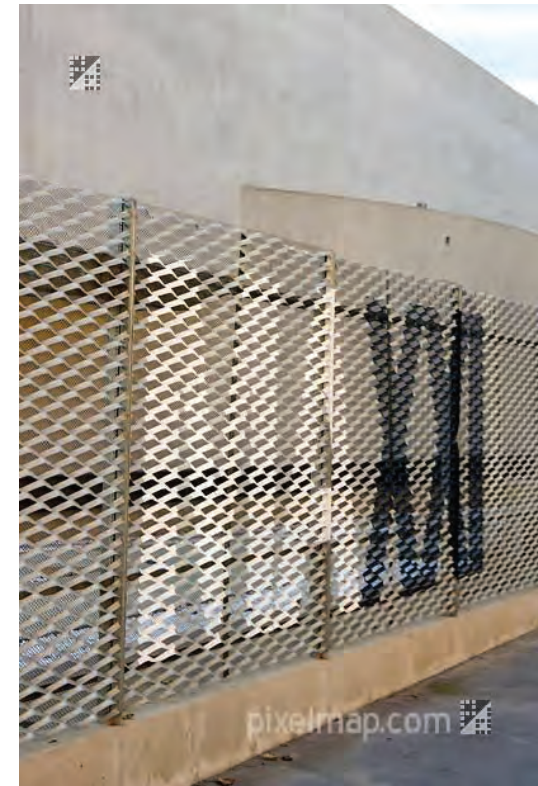
VARYING SLAT ORIENTATION



BOYLSTON TRIANGLE

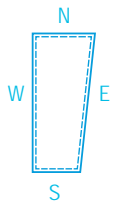
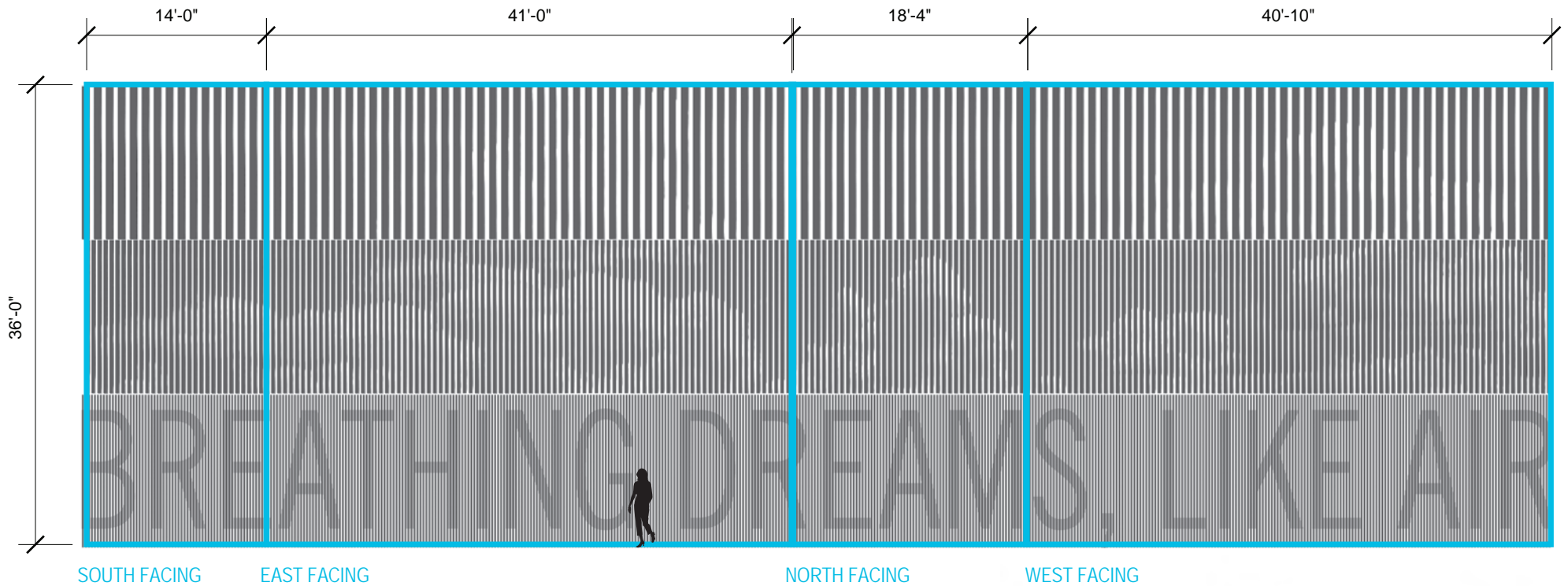
SCREEN WALL

PAINTED GRAPHICS ON SCREEN



BOYLSTON TRIANGLE

SCREEN WALL



OPTION: ONE-COLOR GRAPHICS

BOYLSTON TRIANGLE

SCREEN WALL

GRADIATED PERFORATED IMAGE / TEXT

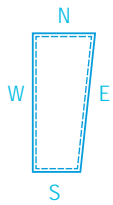
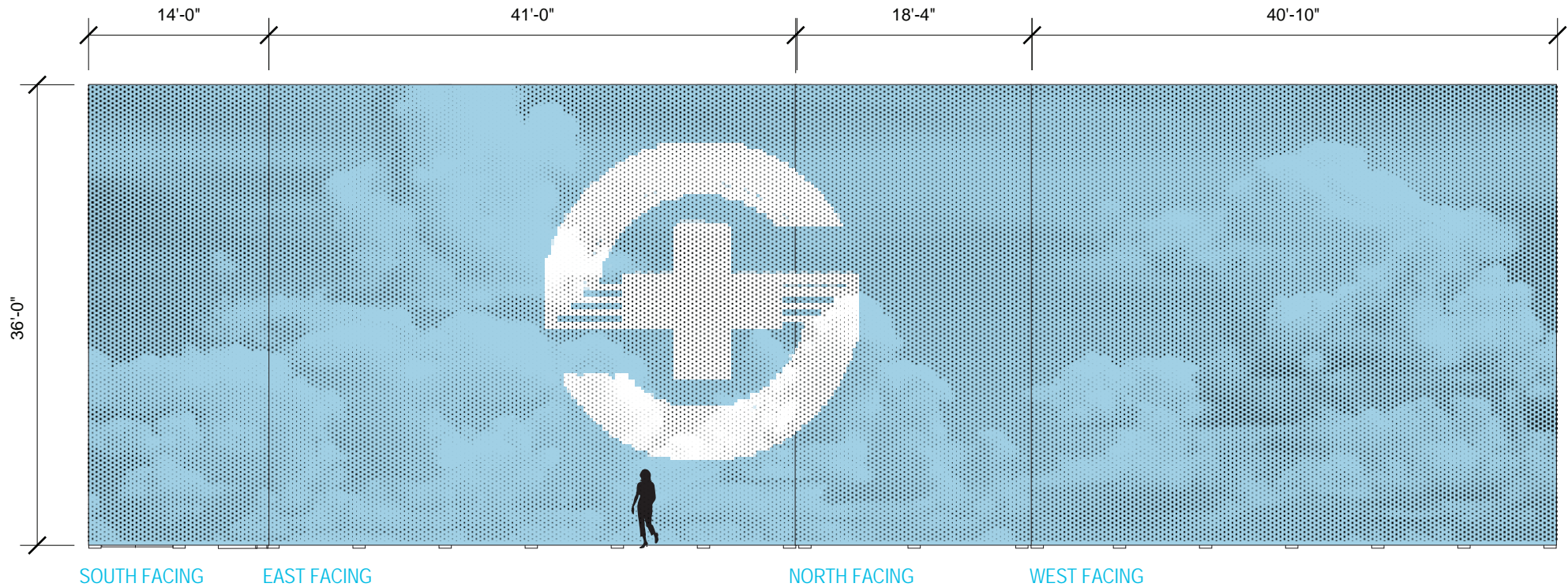


PERFORATED PORTRAITS + COLOR

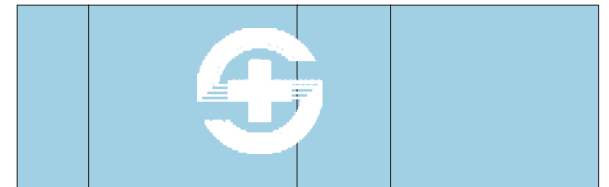


BOYLSTON TRIANGLE

SCREEN WALL



PERFORATED IMAGE

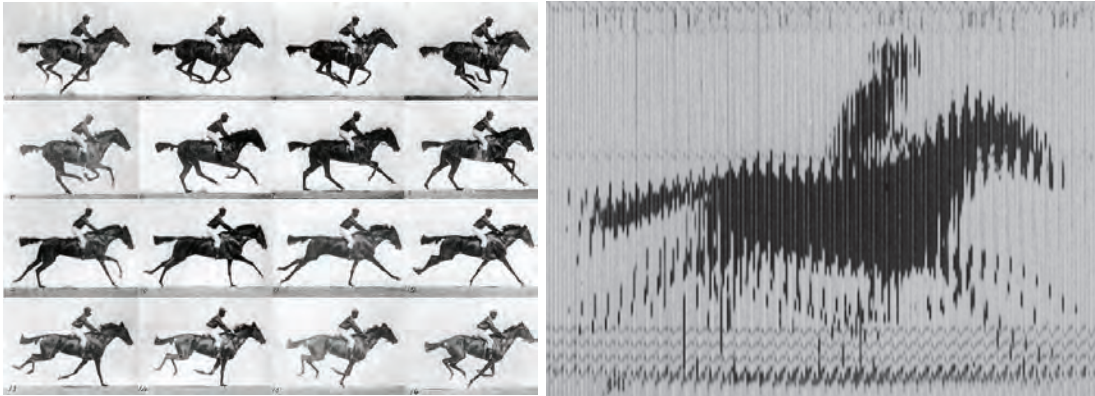


PAINTED PANELS

BOYLSTON TRIANGLE

SCREEN WALL

MOIRE / MUYBRIDGE EFFECT



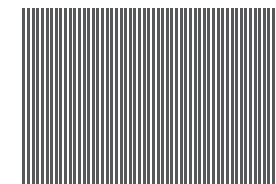
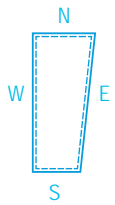
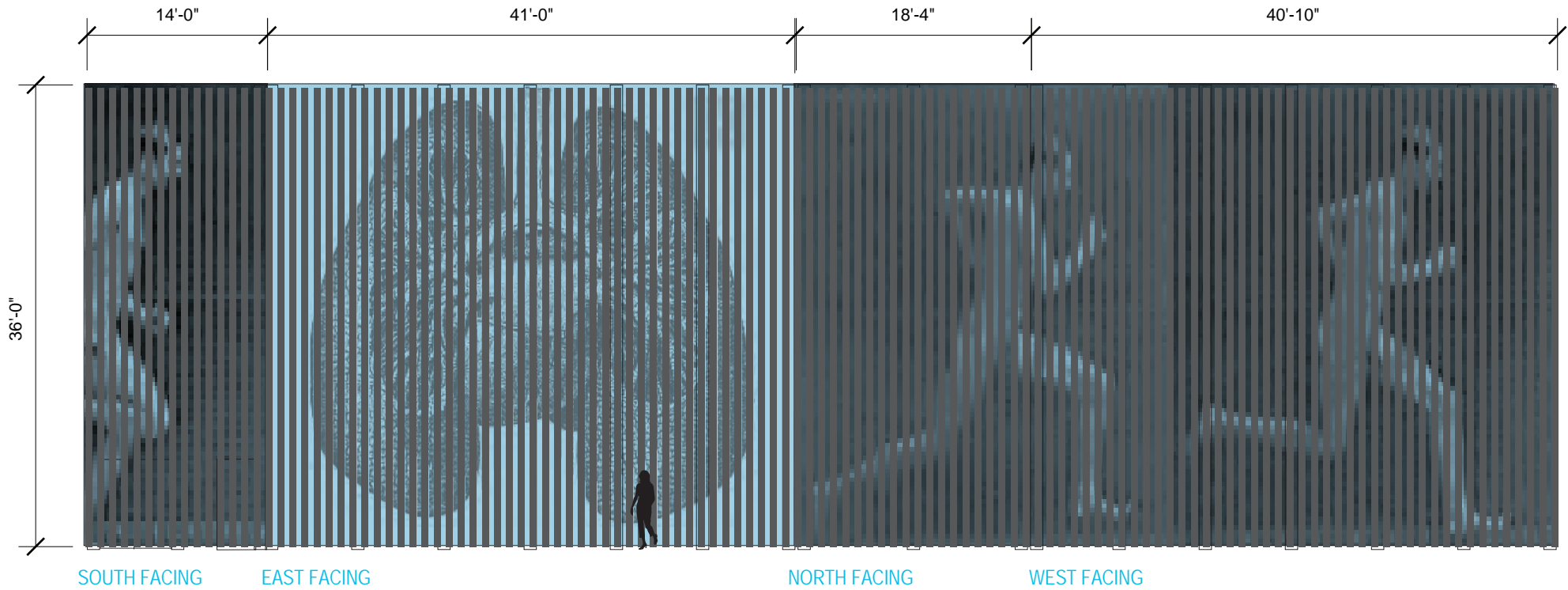
VERTICAL SCREEN WITH DIGITALLY PRINTED SCRIM



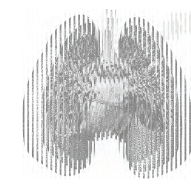
BOYLSTON TRIANGLE

SCREEN WALL

[Link](#)



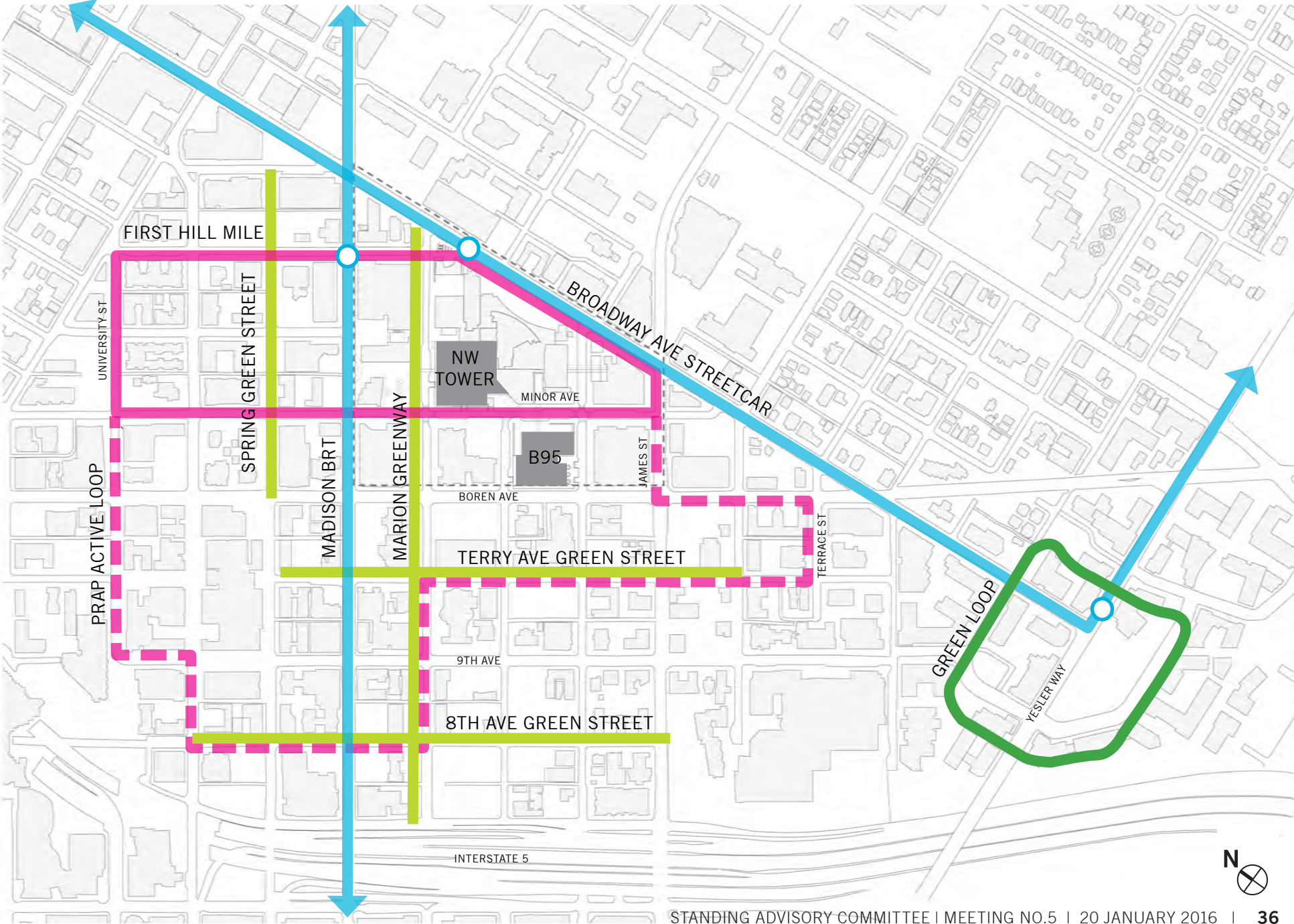
VERTICAL SCREEN



SCRIM/IMAGE

PUBLIC BENEFITS

COMMUNITY INITIATIVES

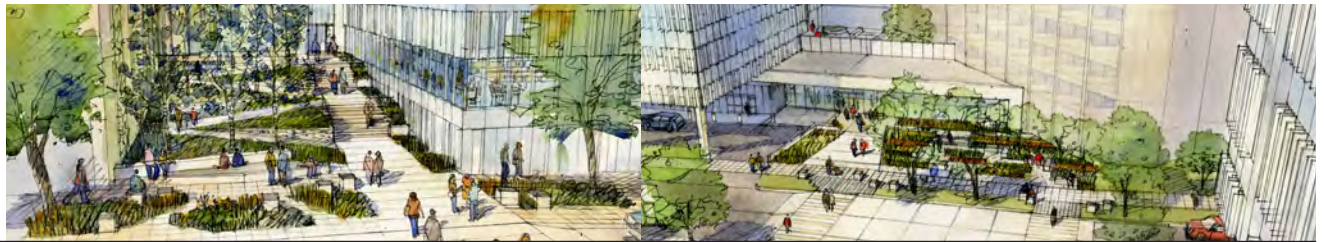


PUBLIC BENEFITS BY CATEGORY

THE FIRST HILL MILE



OPEN SPACE



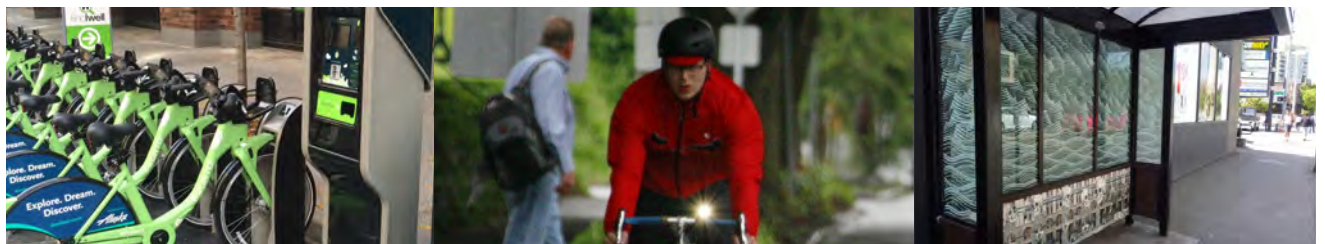
PUBLIC ART



PEDESTRIAN SAFETY



TRANSPORTATION



PUBLIC BENEFITS BY PETITION

BLOCK 95 ALLEY

The First Hill Mile

- Comprehensive open space and pedestrian improvements
- Wayfinding/signage improvements
- Street tree and planting improvements

Open Space

- First Hill Park - contribution towards improvements
- Minor Ave voluntary setback
- Boren Ave voluntary setback
- Columbia St ROW improvements
- Cherry St ROW improvements

Public Art

- Minor & Seneca
- Boylston & Seneca

Pedestrian Safety

- Pedestrian controlled signal at Boren & Cherry
- Pedestrian lighting

Transportation

- Bus Shelter
- Bike Share Stations

MINOR SKYBRIDGE

Open Space

- Minor Ave garden
- Minor Ave enhanced ROW

Public Art

- Skybridge
- Minor Ave garden

Pedestrian Safety

- Raised intersection at Minor St & Cherry St
- Raised intersection at Minor St & Columbia St

MARION SKYBRIDGE

Open Space

- Marion St garden
- Marion St enhanced ROW

Public Art

- SkyBridge
- Marion St garden

Pedestrian Safety

- Raised intersection at Marion St mid-block
- Raised intersection at Marion St & Boylston Ave

MINOR TUNNEL

Public Benefits Not Required

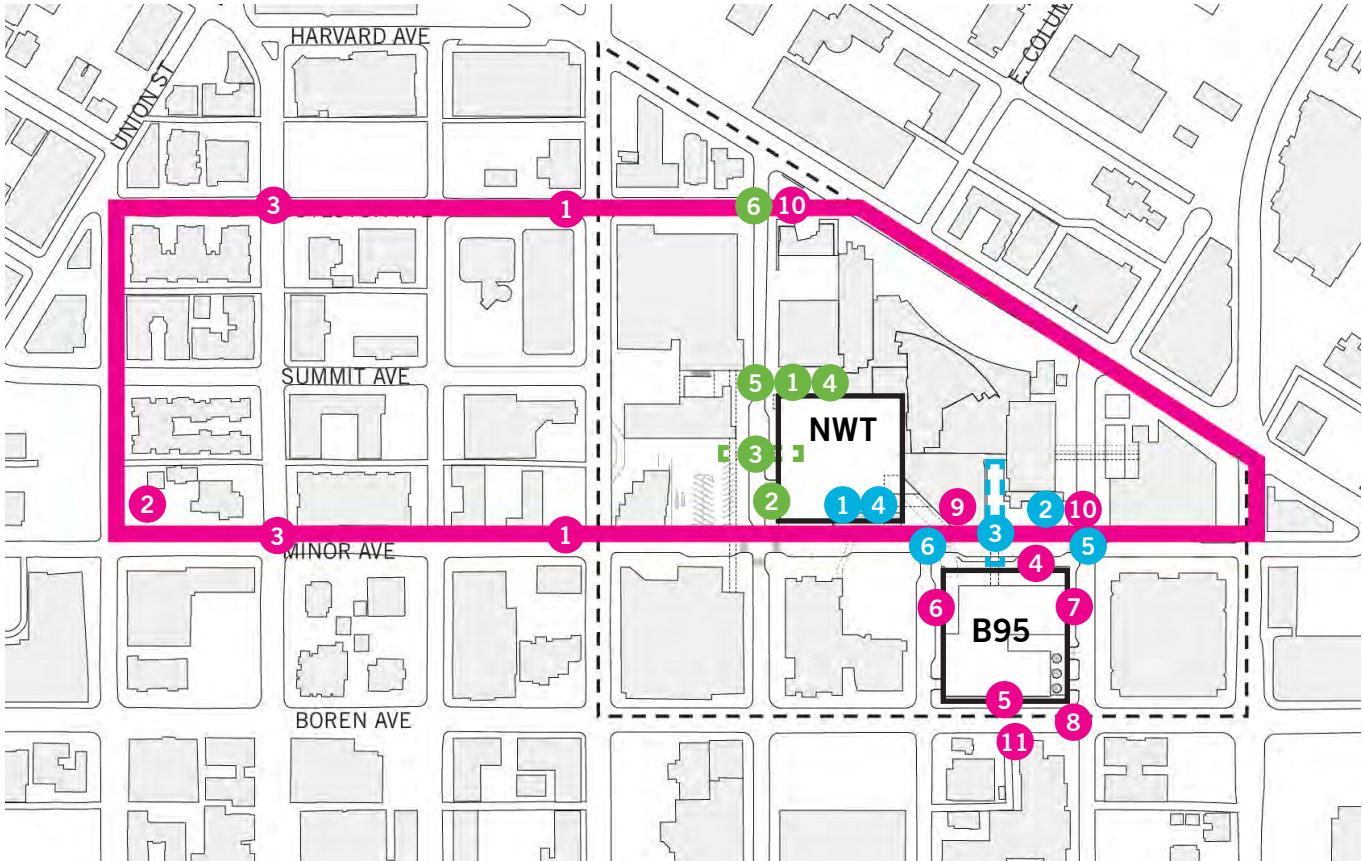
PUBLIC BENEFITS SUMMARY

PETITIONS & PUBLIC BENEFITS

- BLOCK 95 ALLEY VACATION**
 - 1 The First Hill Mile
 - 2 First Hill Park Funding
 - 3 Public Art
 - 4 Minor Ave Voluntary Setback
 - 5 Boren Voluntary Setback
 - 6 Columbia St ROW Enhancements
 - 7 Cherry St ROW Enhancements
 - 8 Boren & Cherry Ped Crossing
 - 9 Pedestrian Lighting @ Minor Ave
 - 10 Pronto Bike Share Stations
 - 11 Metro Shelter @ Boren Ave

- MINOR SKYBRIDGE**
 - 1 Minor Ave Garden
 - 2 Minor Ave Enhanced ROW
 - 3 Skybridge Public Art
 - 4 Minor Ave Garden Public Art
 - 5 Minor & Cherry Raised Intersection
 - 6 Minor & Columbia Raised Intersection

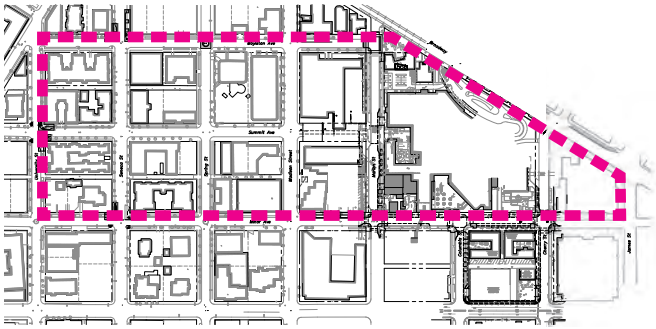
- MARION SKYBRIDGE**
 - 1 Marion St Garden
 - 2 Marion St Enhanced ROW
 - 3 Skybridge Public Artwork
 - 4 Marion St Garden Public Art
 - 5 Marion Mid-block Raised Intersection
 - 6 Marion & Boylston Raised Intersection



B95 ALLEY VACATION PUBLIC BENEFITS MATRIX

PUBLIC BENEFIT	DESCRIPTION	QUANTITY	CODE	MIMP
1 - The First Hill Mile	<i>Open space & pedestrian crossing improvements</i>		None	None
	<i>Sidewalk replacement to SDOT standard</i>	10,700 SF		
	<i>Plantings at curb bulbs and planting strips</i>	6,900 SF		
	<i>Curb bulbs / traffic circle (Boylston & Spring)</i>	7		
	<i>Companion curb ramps</i>	4		
	<i>Crosswalks</i>	10		
	<i>Seating</i>	150 LF		
	<i>Bike furnishings (bike rack or fix it station)</i>	5		
	<i>Wayfinding / signage improvements</i>			
	<i>Pavement markers</i>	52		
	<i>Vertical markers</i>	12		
	<i>Wayfinding kiosk</i>	5		
	<i>Street tree replacement</i>	38		
2 - First Hill Park Contribution	<i>Contribution toward improvements to First Hill Park</i>	Budget \$500,000	None	None
3 - Public Art	<i>Work with selected artist to identify and implement artwork along the First Hill Mile.</i>	Budget \$300,000	None	None
4 - Minor Ave Voluntary Setback	<i>Setback along the Minor Ave</i>	1,700 SF	None	None
5 - Boren Ave Voluntary Setback	<i>Setback along the Boren Ave</i>	1,400 SF	None	None
6 - Columbia St ROW Improvements	<i>Expanded pedestrian streetscape</i>	980 SF	None	None
7 - Cherry St ROW Improvements	<i>Expanded pedestrian streetscape</i>	560 SF	None	None
8 - Pedestrian Controlled Signal	<i>Pedestrian controlled signal at Boren & Cherry as approved by SDOT</i>	1	None	None
9 - Pedestrian Lighting	<i>Pedestrian scale lighting along Minor Ave</i>	13	None	None
10 - Bike Share Stations	<i>Provide bike share stations at coordinated locations with Pronto bike share program</i>	2	None	None
11 - Metro Transit Shelter on Boren	<i>Metro transit shelter on west side of Boren Ave between Marion and Columbia</i>	1	None	None

B95 ALLEY VACATION PUBLIC BENEFITS



1 The First Hill Mile



2 First Hill Park Funding



3 Public Art Along Mile



4 Minor Ave Voluntary Setback



5 Boren Ave Voluntary Setback



6 Columbia St ROW Enhancements



7 Cherry St ROW Enhancements



8 Boren & Cherry Ped Crossing



9 Pronto Bike Share Stations



10 Metro Shelter @ Seneca Street



11 Pedestrian Lighting @ Minor Ave

MINOR AVE SKYBRIDGE PUBLIC BENEFITS MATRIX

PUBLIC BENEFIT	DESCRIPTION	QUANTITY <i>(APPROX)</i>	CODE REQ'D	MIMP REQ'D
1 - Minor Ave Garden	<i>3,200 SF of publicly accessible open space directly adjacent to Minor Ave</i>	<i>3,200 SF</i>	<i>None</i>	<i>None</i>
	<i>1,500 SF of planting area</i>			
	<i>110 LF of seating elements</i>			
	<i>7 trees</i>			
2 - Minor Ave Improvements	<i>3,700 SF of expanded pedestrian streetscape</i>	<i>3,700 SF</i>	<i>None</i>	<i>None</i>
	<i>1,600 SF of planting area</i>			
	<i>2,100 SF of sidewalk replacement</i>			
	<i>30 LF of seating elements</i>			
	<i>6 pedestrian light fixtures</i>			
	<i>4 trees</i>			
3 - Publicly Accessible Art - Minor Ave Skybridge	<i>Work with selected artist on design of Minor Ave skybridge</i>	<i>Budget \$250k</i>	<i>None</i>	<i>None</i>
4 - Publicly Accessible Art - Minor Ave Garden	<i>Work with selected artist on significant artwork element in proposed Minor Ave garden open space</i>	<i>Budget \$175k</i>	<i>None</i>	<i>None</i>
5 - Minor and Cherry Intersection	<i>Intersection and sidewalk improvements to enhance pedestrian safety</i>	<i>6,800 SF</i>	<i>None</i>	<i>None</i>
6 - Minor and Columbia Intersection	<i>Intersection and sidewalk improvements to enhance pedestrian safety</i>	<i>4,800 SF</i>	<i>None</i>	<i>None</i>

MINOR AVE SKYBRIDGE PUBLIC BENEFITS



1 Minor Ave Garden



2 Minor Ave Enhanced ROW



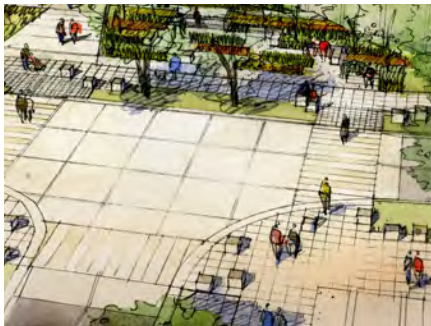
3 Skybridge Public Art



4 Minor Ave Garden Public Art



5 Minor & Cherry Pedestrian Crossing Improvements



6 Minor & Columbia Pedestrian Crossing Improvements

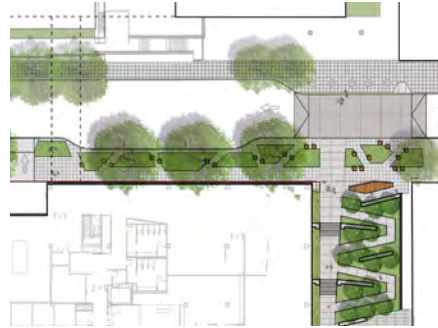
MARION ST SKYBRIDGE PUBLIC BENEFITS MATRIX

PUBLIC BENEFIT	DESCRIPTION	QUANTITY <i>(APPROX)</i>	CODE REQ'D	MIMP REQ'D
1 - Marion St Garden	<i>5,300 SF of publicly accessible open space directly adjacent to Marion St</i>	<i>5,300 SF</i>	<i>None</i>	<i>None</i>
	<i>2,300 SF of planting area</i>			
	<i>75 LF of seating elements</i>			
	<i>Landscape pedestrian lighting to 1/2 fc</i>			
	<i>12 Trees</i>			
2 - Marion St Improvements	<i>1,600 SF of expanded pedestrian streetscape</i>	<i>3,700 SF</i>	<i>None</i>	<i>None</i>
	<i>300 SF of planting area</i>			
	<i>1,300 SF of sidewalk</i>			
	<i>64 LF of seating elements</i>			
	<i>7 pedestrian light fixtures</i>			
3 - Publicly Accessible Art - Marion Skybridge	<i>Work with selected artist on Minor Ave skybridge</i>	<i>Budget \$250k</i>	<i>None</i>	<i>None</i>
3 - Publicly Accessible Art - Marion St Garden	<i>Work with selected artist on significant artwork element in proposed Marion St garden open space</i>	<i>Budget \$175k</i>	<i>None</i>	<i>None</i>
5 - Marion St Mid-Block Crossing	<i>Raised intersection and sidewalk to enhance pedestrian safety</i>	<i>3,000 SF</i>	<i>None</i>	<i>None</i>
6 - Marion and Boylston Intersection	<i>Intersection and sidewalk improvements to enhance pedestrian safety</i>	<i>3,100 SF</i>	<i>None</i>	<i>None</i>

MARION ST SKYBRIDGE PUBLIC BENEFITS



1 Marion St Garden



2 Marion St Enhanced ROW



3 Skybridge Public Art



4 Marion St Garden Public Art

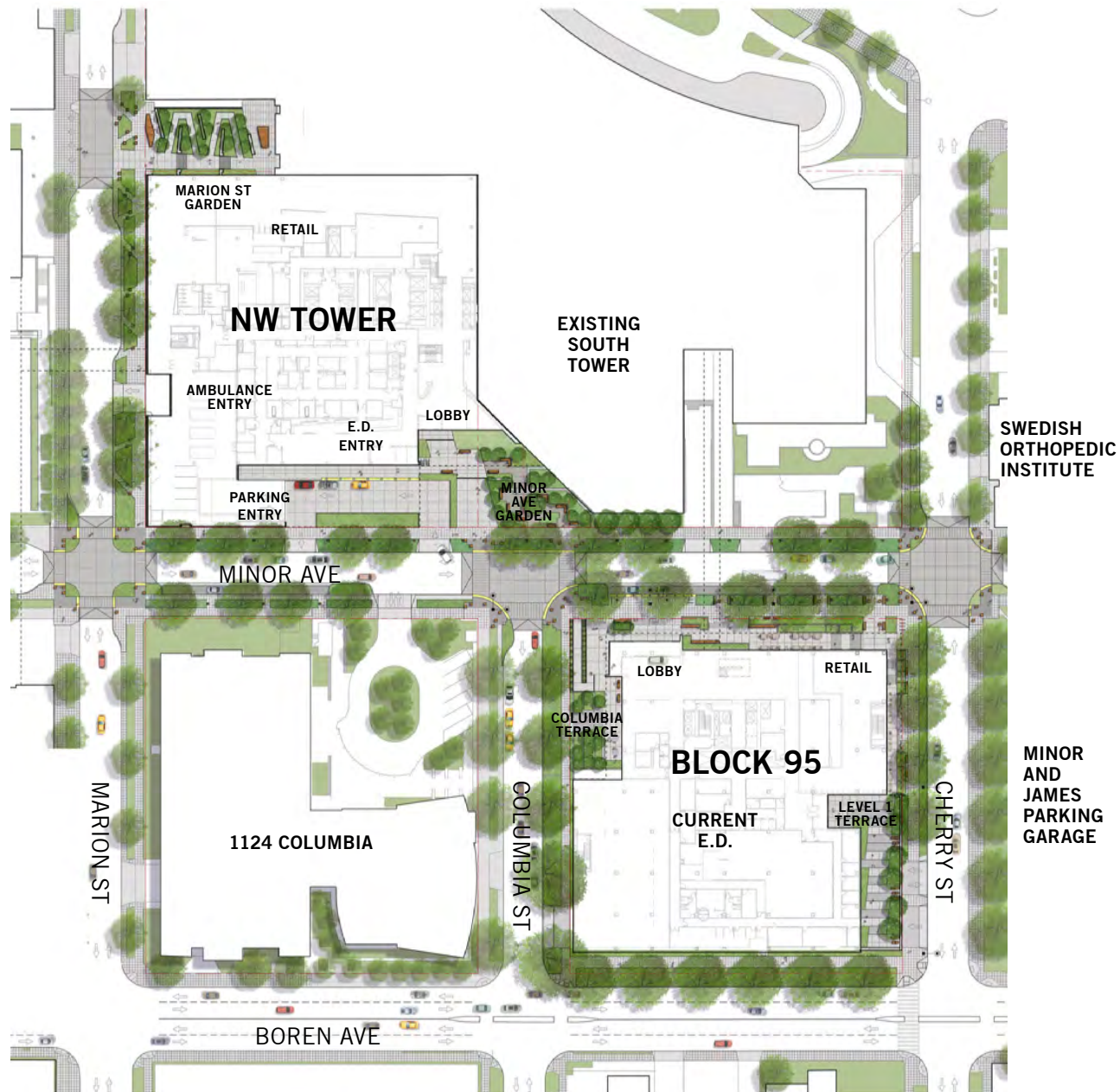


5 Marion Mid-block Raised Intersection



6 Marion & Boylston
Pedestrian Crossing Improvements

SITE PLAN



THE FIRST HILL MILE

PUBLIC BENEFIT SUMMARY

ROW Improvements

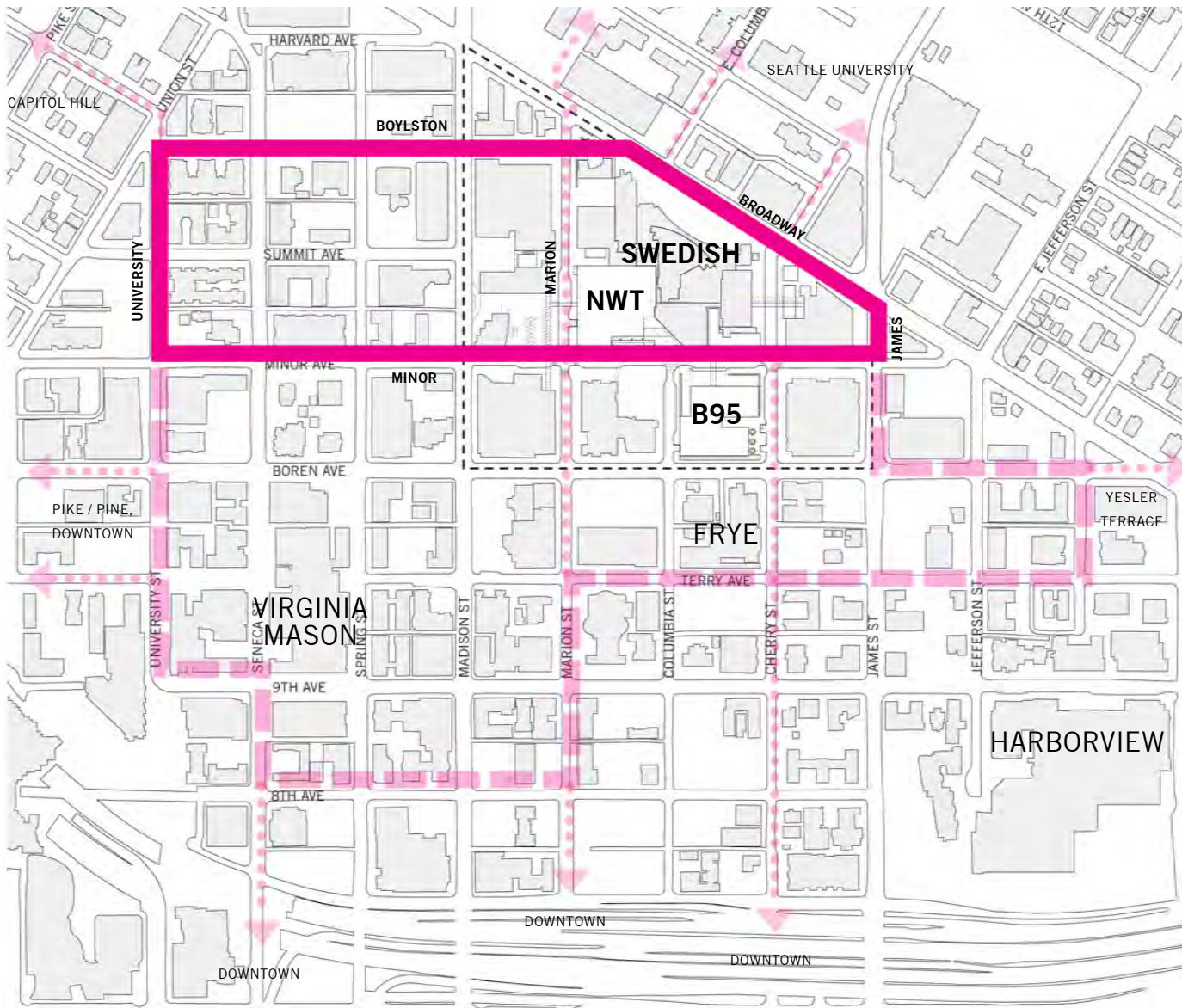
- Curb bulbs & companion ramps
- Traffic circle
- Crosswalks
- Sidewalk replacement
- Plantings & Street Trees
- Seating
- Bike furnishings

Wayfinding / Signage

- Pavement markers
- Vertical markers
- Wayfinding kiosks

Public Art

- Minor & Seneca
- Boylston & Seneca



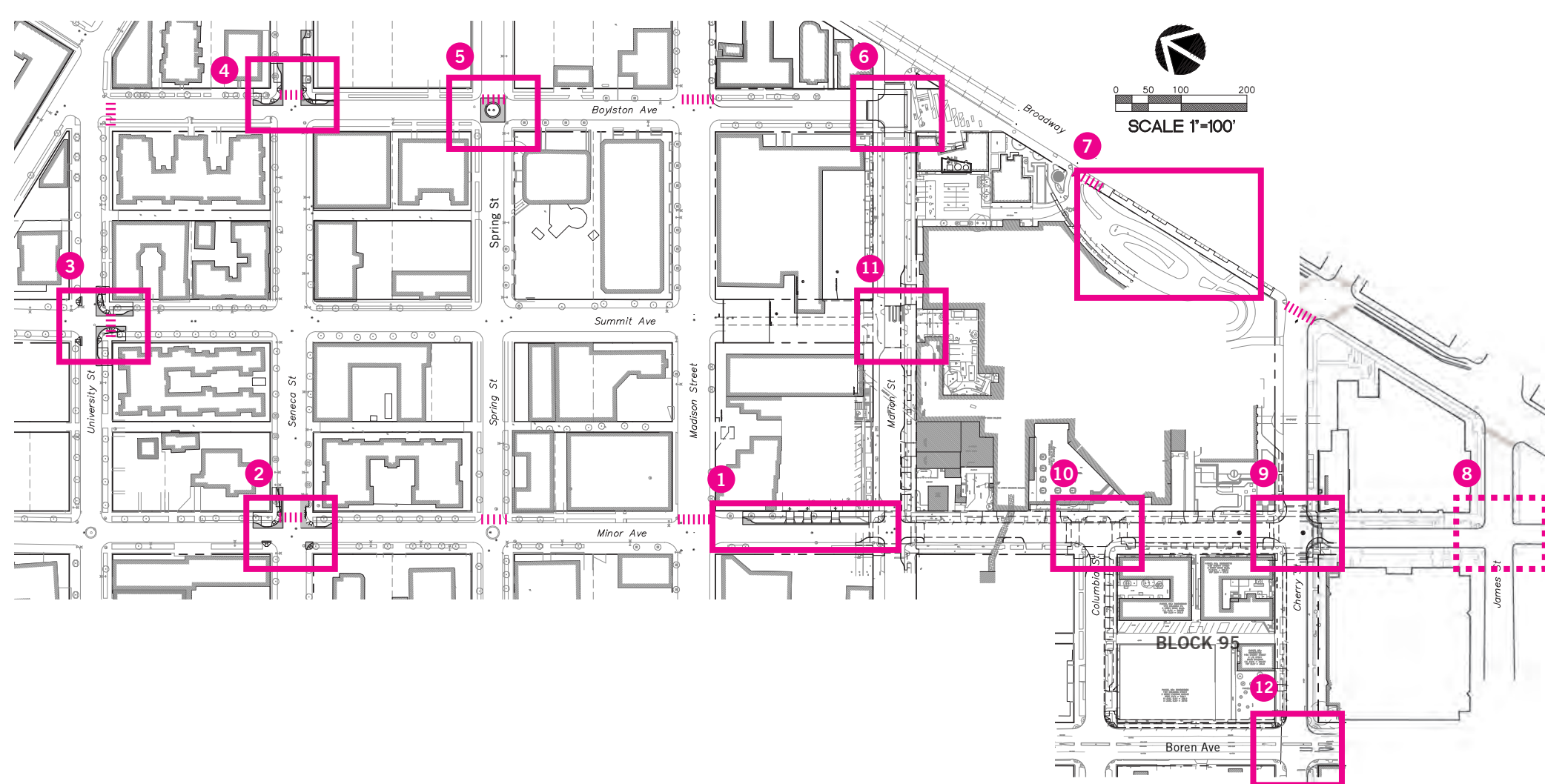
LEGEND

- The First Hill Mile
- First Hill Public Realm Action Plan Active Loop
- Neighborhood Connections

LEGEND

- | | | | |
|---|----------------------------------|----|--------------------------------------|
| 1 | Marion to Madison | 7 | Broadway Frontage Improvements |
| 2 | Minor & Seneca Curb Bulbs | 8 | Potential Minor & James Ped Crossing |
| 3 | University and Summit Curb Bulbs | 9 | Minor & Cherry Intersection |
| 4 | Boylston & Seneca Curb Bulbs | 10 | Minor & Columbia Intersection |
| 5 | Boylston & Spring Traffic Circle | 11 | Marion Mid-Block Raised Ped Crossing |
| 6 | Boylston & Marion Intersection | 12 | Cherry & Boren Ped Crossing |

THE FIRST HILL MILE PROPOSED ROW IMPROVEMENTS



THE FIRST HILL MILE

DESIGN PRINCIPLES

- Invest in the public realm to promote health and wellness
- Reflect the neighborhood character through the use of timeless materials with a contemporary approach
- Link the walking route in a visible expression of integrated wayfinding elements, artwork, furnishings and landscaping



1 WAYFINDING ELEMENTS

Granite, bronze, and colorful accents link the walking route



2 PUBLIC ARTWORK

Artwork adds character to the eclectic spirit of First Hill



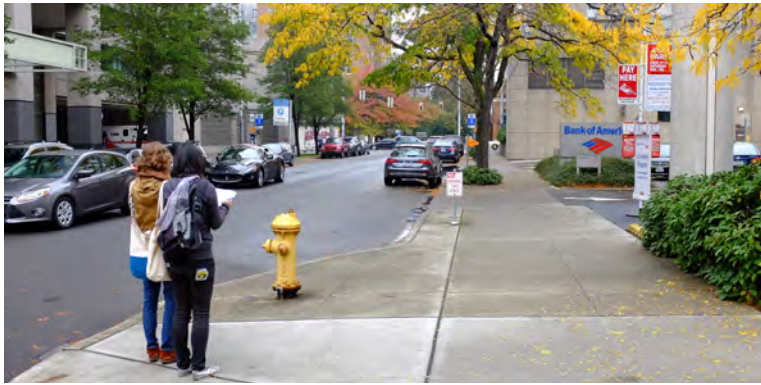
3 FURNISHINGS / SEATING



4 TREES & PLANTING

Support First Hill's tree canopy through selective tree replacement



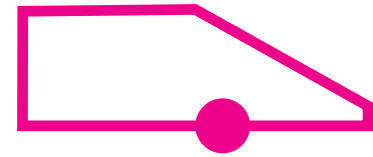


Existing Intersection

LEGEND

- Wayfinding Sign
- Pavement Marker

MARION TO MADISON



EXISTING CONDITION

- Narrow sidewalk, large driveways, and limited planting

PROPOSED IMPROVEMENTS

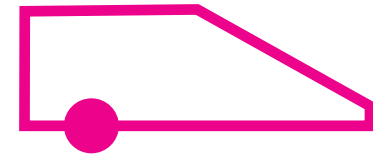
- Replace (4) parking stalls with expanded planting area
- Reduce drive-thru exit to 2 lanes
- Replace sidewalk & plantings





Existing Intersection

MINOR & SENECA CURB BULBS



EXISTING CONDITION

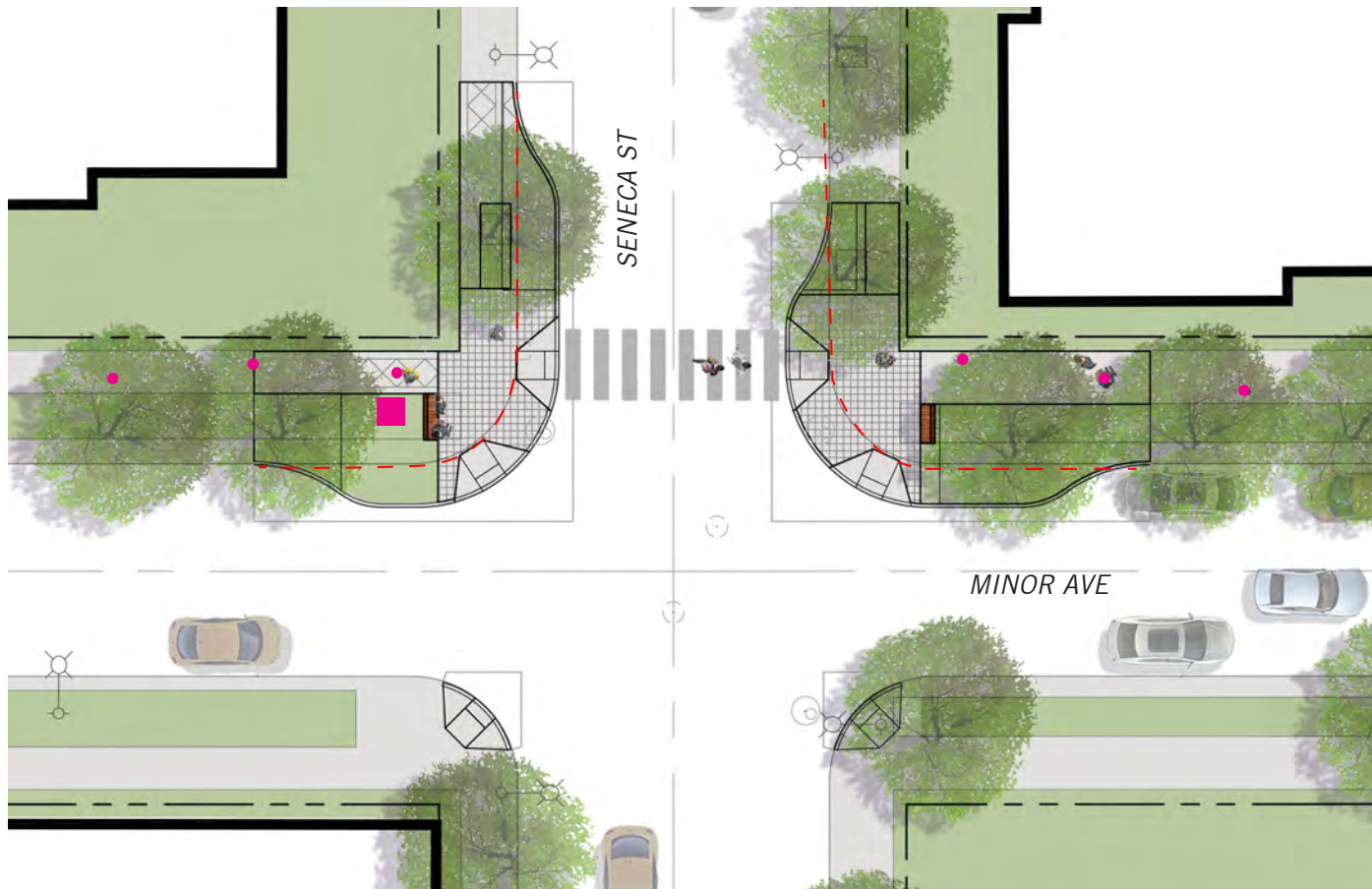
- Seneca - 2 lane arterial
- Residential character
- Stimson-Green Mansion

PROPOSED IMPROVEMENTS

- Curb bulbs each side of Seneca
- Companion ramps
- Curb bulbs contain sidewalk, gathering space with seat elements and planting
- Wayfinding elements
- Bike furnishings
- Storm drain adjustments
- No on-street parking removed
- Potential Seneca bike facility

LEGEND

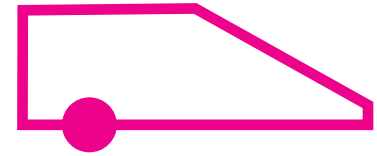
- Wayfinding Sign
- Pavement Marker





Existing Intersection

MINOR & SENECA CURB BULBS



UNIVERSITY & SUMMIT CURB BULBS



Existing Intersection



EXISTING CONDITION

- Summit connects to Capitol Hill
- Residential character
- Assisted Living Community nearby

PROPOSED IMPROVEMENTS

- Curb bulbs each side of Summit
- Companion ramps
- Curb bulbs contain sidewalk, gathering space with seat elements and planting
- Wayfinding elements
- Storm drain adjustments
- No on-street parking removed

LEGEND

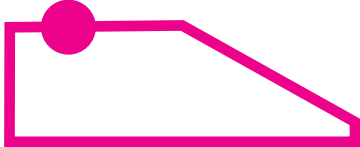
- Wayfinding Sign
- Pavement Marker



BOYLSTON & SENECA CURB BULBS



Existing Intersection



EXISTING CONDITION

- Residential character
- Surface parking lot has redevelopment potential
- Seneca - 2 lane arterial
- Potential Seneca bike facility

PROPOSED IMPROVEMENTS

- Curb bulbs each side of Seneca
- Curb bulbs contain sidewalk, gathering space with seat elements and planting
- Wayfinding elements
- Bike furnishings
- Mailbox relocation
- Storm drain adjustments
- No on-street parking removed
- Potential Seneca bike facility

LEGEND

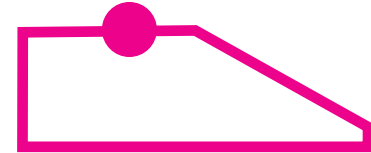
- Wayfinding Sign
- Pavement Marker





Existing Intersection

BOYLSTON & SPRING TRAFFIC CIRCLE

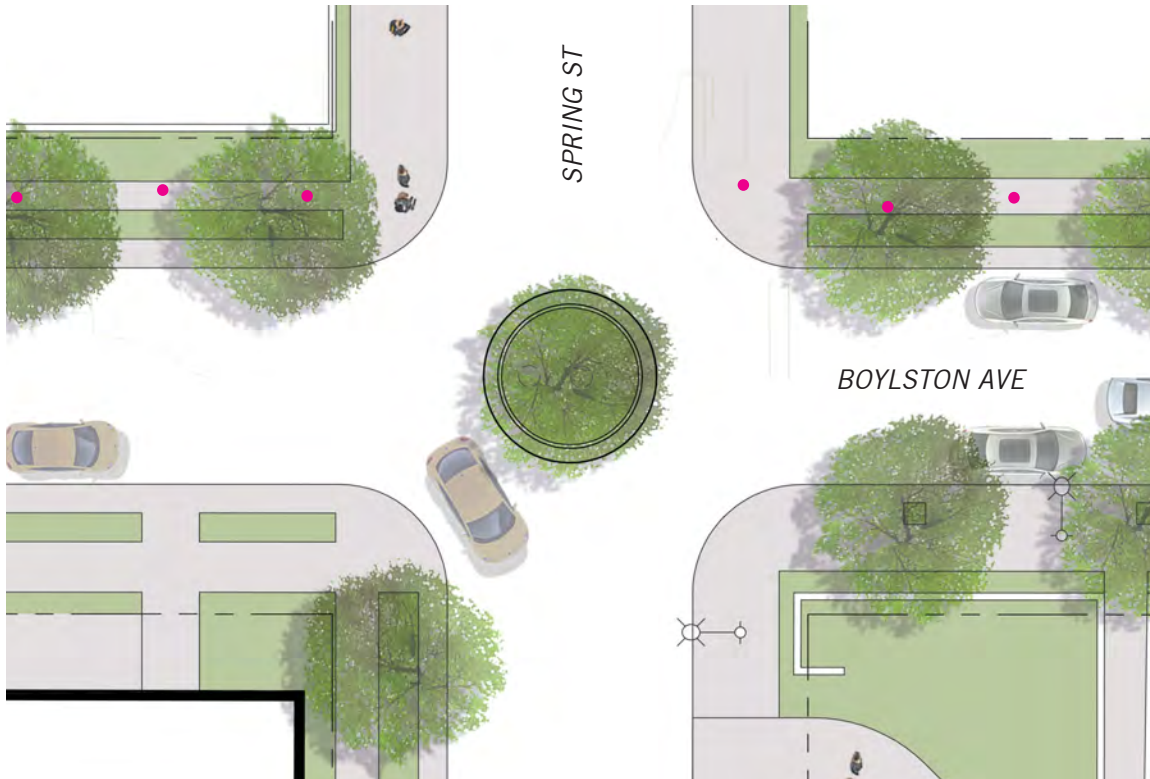


EXISTING CONDITION

- Redevelopment potential at adjacent parcels
- Low traffic volume

PROPOSED IMPROVEMENTS

- Traffic circle with planting matching existing circle at Boylston and Spring



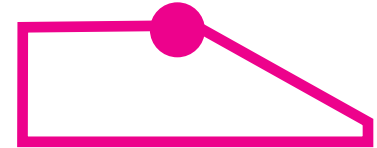
LEGEND

- Wayfinding Sign
- Pavement Marker



Existing Intersection

BOYLSTON & MARION RAISED INTERSECTION

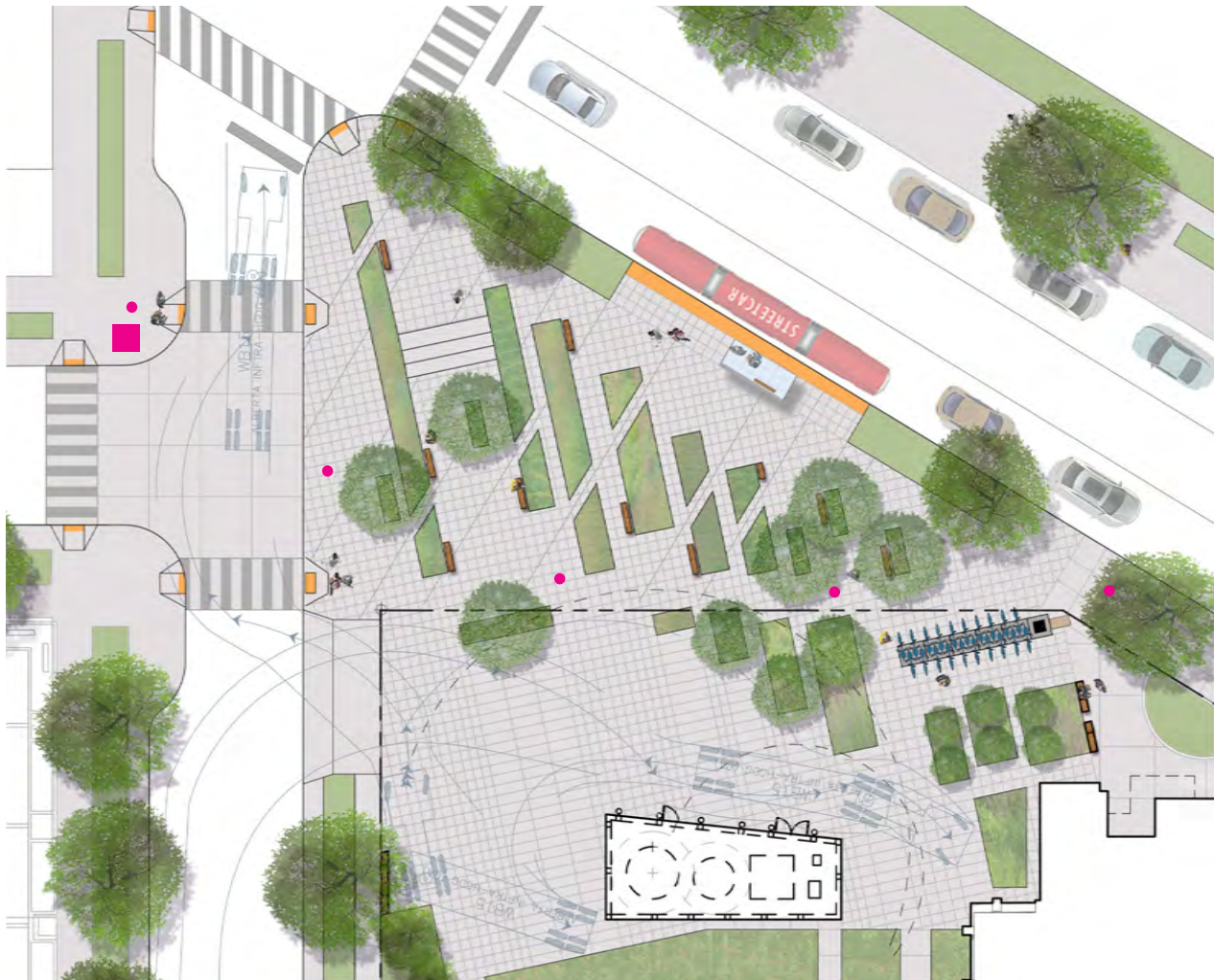


EXISTING CONDITION

- Adjacent to streetcar plaza
- Potential right in right out intersection

PROPOSED IMPROVEMENTS

- Raised intersection with landscape separation at streetcar plaza

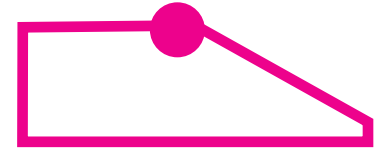


LEGEND

- Wayfinding Sign
- Pavement Marker



BOYLSTON & MARION INTERSECTION



Location of CSSD/O2 Farm



BROADWAY FRONTAGE IMPROVEMENTS



LEGEND

- Wayfinding Sign
- Pavement Marker



MINOR & JAMES PEDESTRIAN CROSSING



Existing Intersection



EXISTING CONDITION

- Dangerous crossing at south end of hospital campus
- Frequent crossings despite lack of infrastructure

PROPOSED IMPROVEMENTS

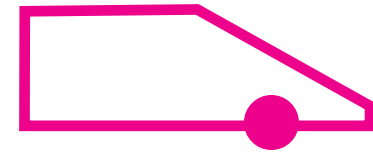
- Signalized pedestrian crossing



Existing Intersection



MINOR & CHERRY INTERSECTION



EXISTING CONDITION

- Cherry is pedestrian through route to downtown
- Hospital internal circulation

PROPOSED IMPROVEMENTS

- Enhanced intersection at crossing
- Tactile warning strips and seat bollards to separate traffic
- Planting at corners

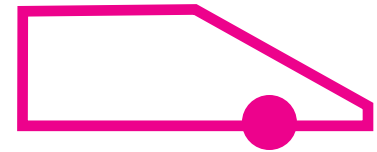
LEGEND

- Wayfinding Sign
- Pavement Marker

MINOR & CHERRY INTERSECTION



Existing Intersection



EXISTING CONDITION

- Cherry is pedestrian through route to downtown
- Hospital internal circulation

PROPOSED IMPROVEMENTS

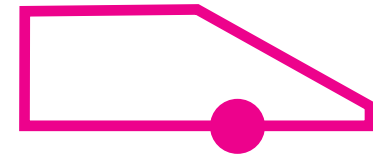
- Enhanced intersection at crossing
- Tactile warning strips and seat bollards to separate traffic
- Planting at corners





Existing Intersection

MINOR & COLUMBIA INTERSECTION

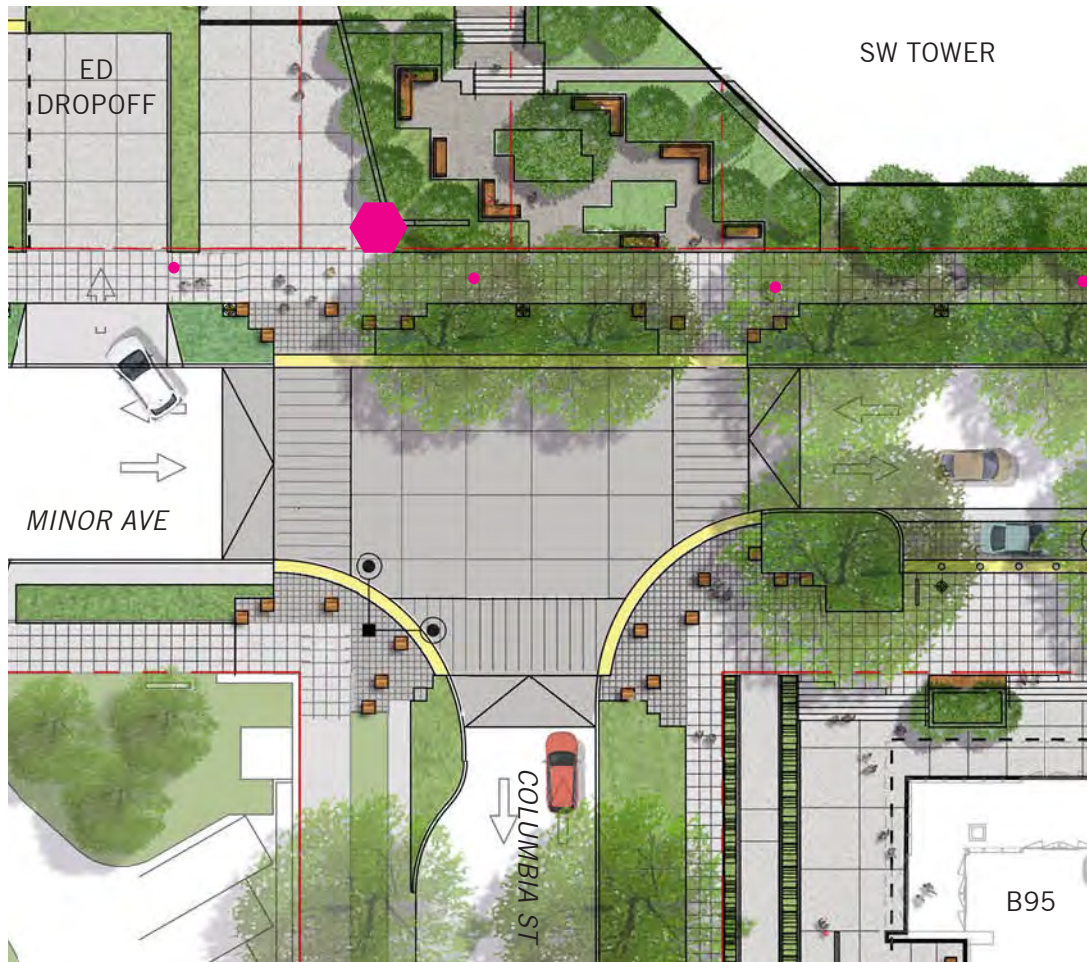


EXISTING CONDITION

- Columbia dead ends into entry courtyard to hospital
- Hospital internal circulation

PROPOSED IMPROVEMENTS

- Enhanced intersection at crossing
- Tactile warning strips and seat bollards to separate traffic
- Planting at corners



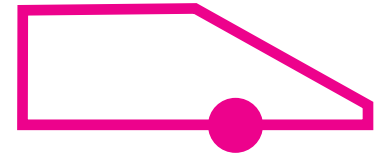
LEGEND

- Directory
- Pavement Marker

MINOR & COLUMBIA RAISED INTERSECTION



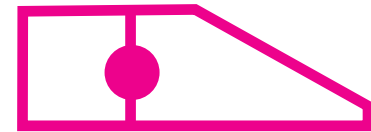
Existing Intersection





Existing Intersection

MARION MID-BLOCK RAISED INTERSECTION

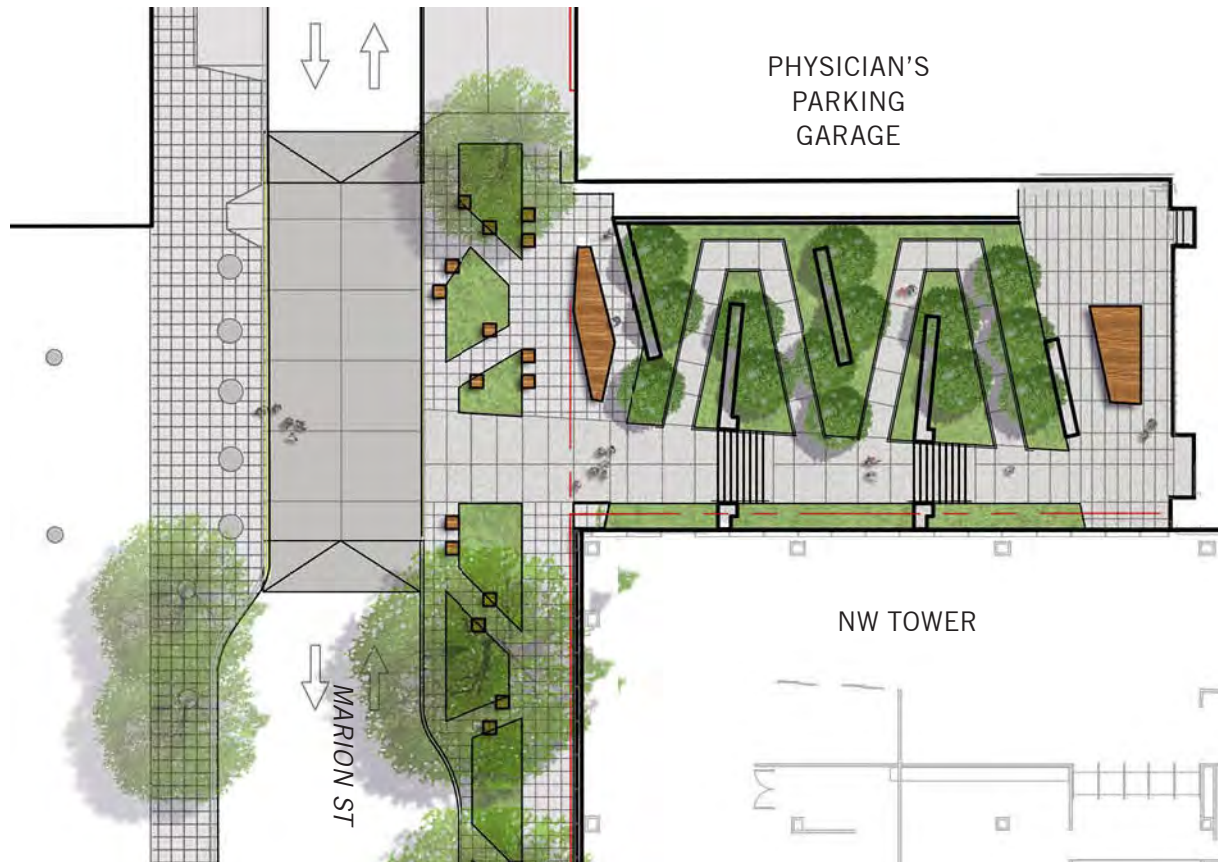


EXISTING CONDITION

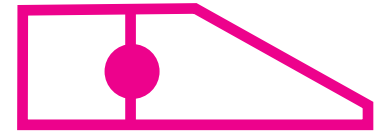
- Mid block crossing with curb ramps
- Escalator from Madison dead ends into loading zone/back of house

PROPOSED IMPROVEMENTS

- Raised mid-block pedestrian crossing



MARION MID-BLOCK RAISED INTERSECTION





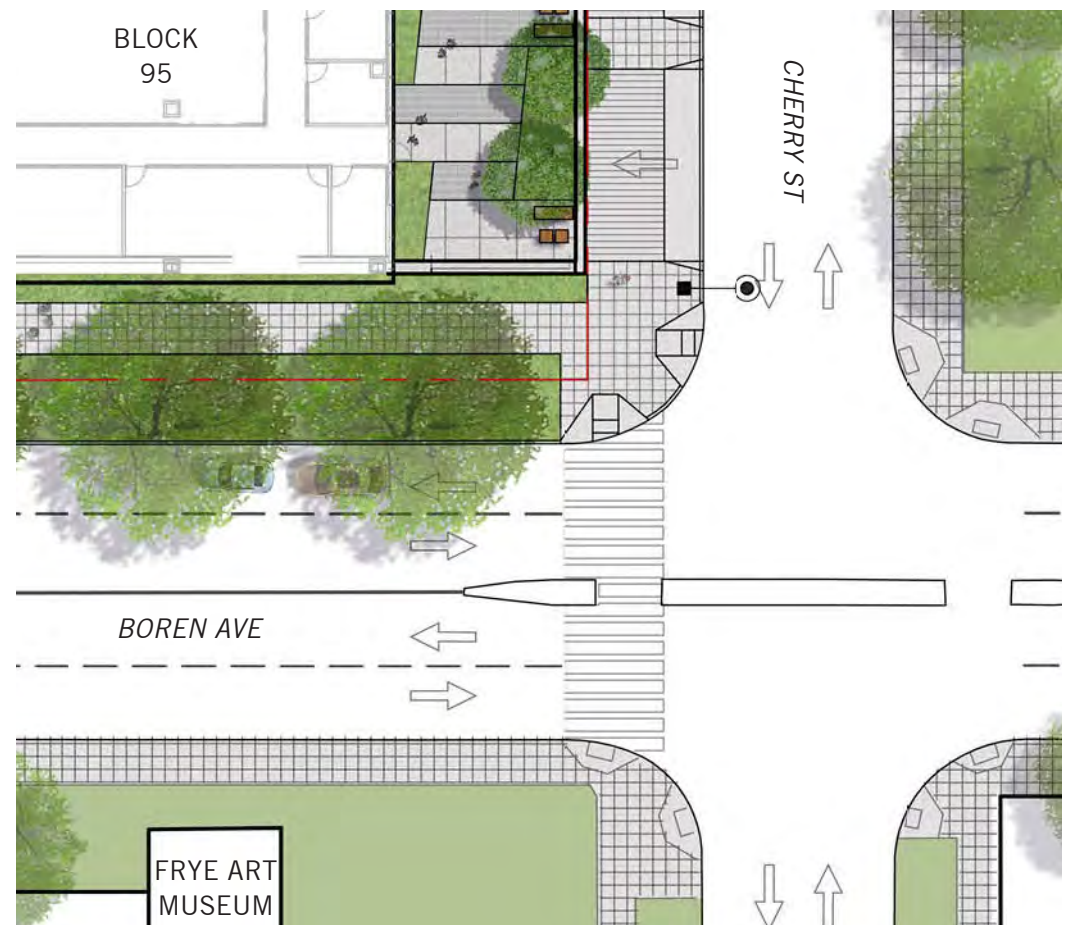
BOREN AND CHERRY PEDESTRIAN CROSSING

EXISTING CONDITION

- Cherry is pedestrian through route to downtown
- Boren is busy arterial

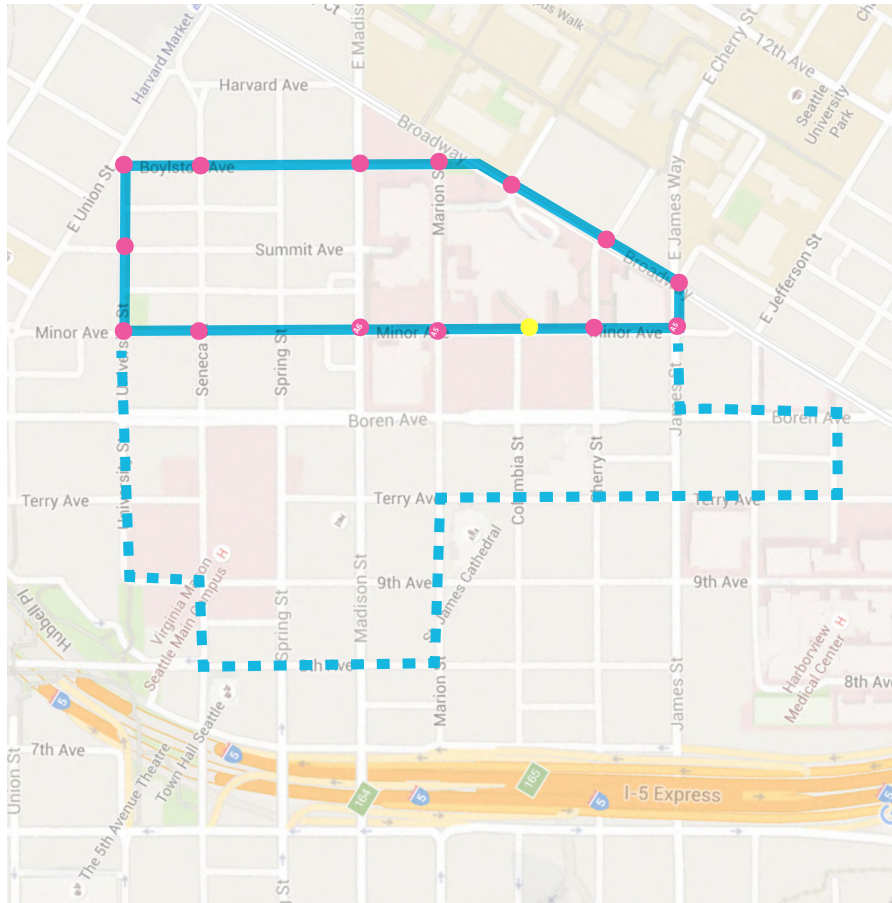
PROPOSED IMPROVEMENTS

- Pedestrian signalized intersection



WAYFINDING & SIGNAGE

Wayfinding Locations



- ST A. Wayfinding Marker (14)
- ST B. Directory (1)

Precedent Example: Cincinnati

govibrant

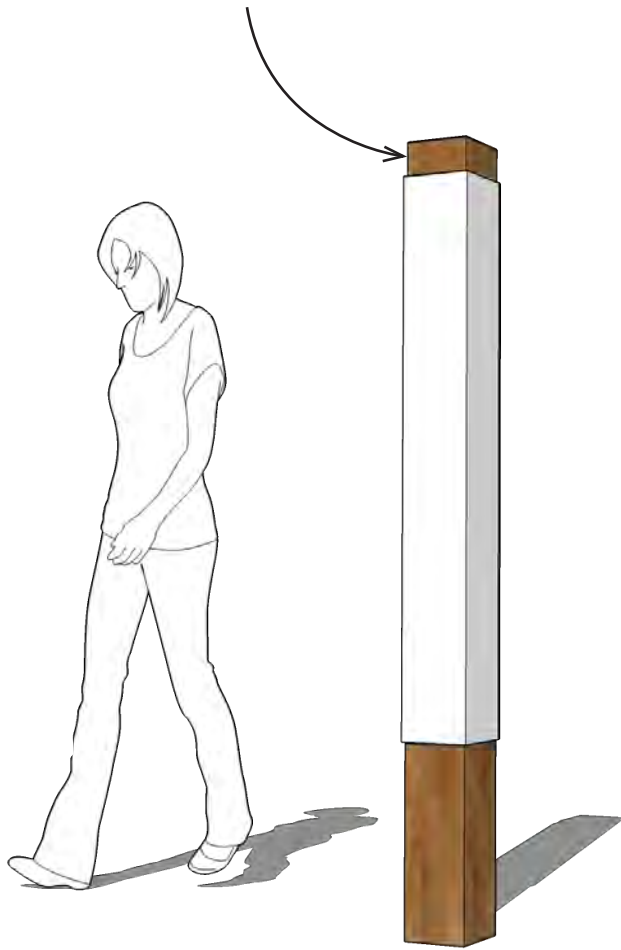
govibrant downtown are as easy as 1, 2, 3.

- ASK A FRIEND**
or a family member, or a colleague to join you, or take a stroll by yourself.
- PICK A ROUTE**
 - orange 1 mi ~20 mins
 - green 2 mi ~40 mins
 - pink 3 mi ~60 mins
- WALK OR RUN IT**
follow the color coded signs on the way and have fun!

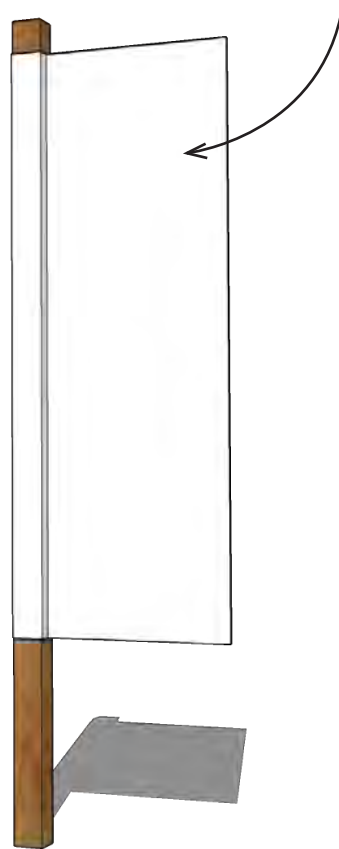
WAYFINDING & SIGNAGE

Standard Wood Posts for Low-Cost Fabrication Methods and Installation

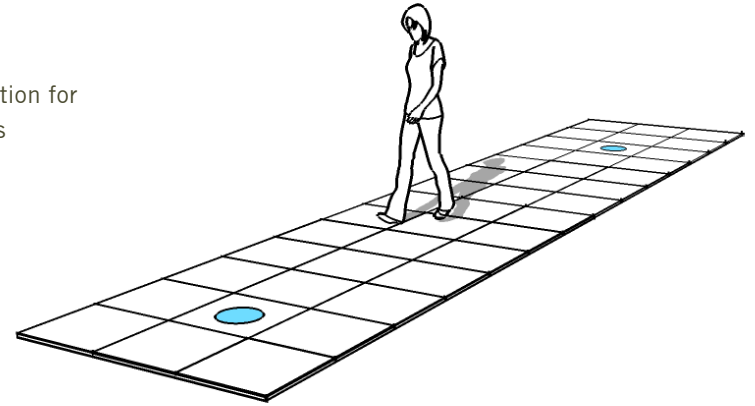
Standard Aluminum Specification for Low-Cost Fabrication Methods



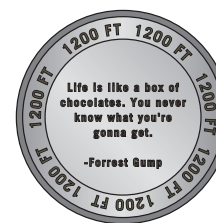
Wayfinding Marker



Directory



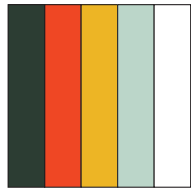
20-50 ft increments



Pavement Marker

Materials: Bronze // Stone // Glass

WAYFINDING & SIGNAGE CONTENT



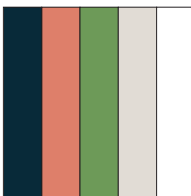
History

Take a walk back in time with the First Hill Mile. This scheme would provide historical facts from the area with illustrated watercolor elements honoring the beautiful landmarks and foliage in the area.



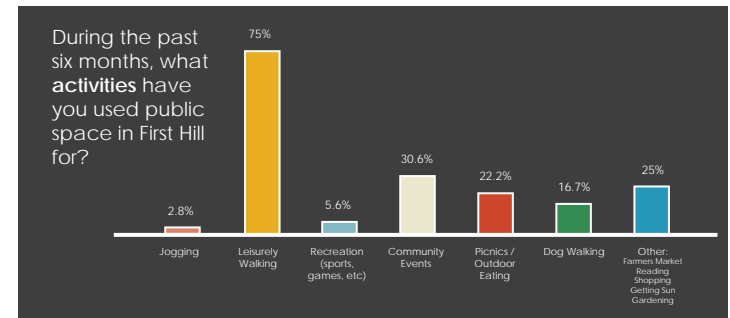
Health

A vibrant and informative approach to interactive health. This scheme would have markers indicating distance (ft.) and fun health facts!

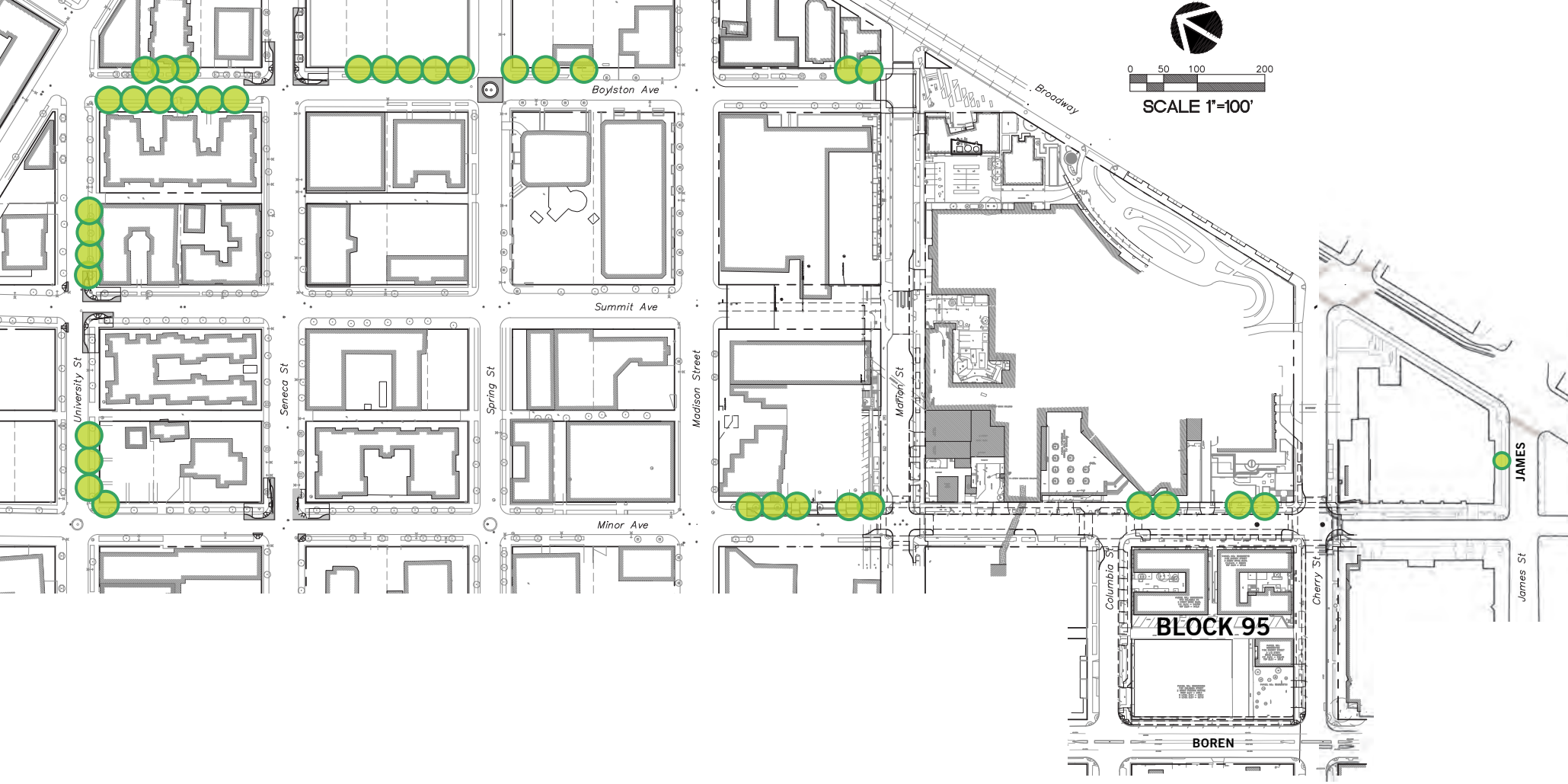


Happiness

Bringing happiness to every step in your journey while touring the First Hill Mile. Every 20-50 ft a pedestrian will find a quote or fact about love, joy, and spirit. This intends to enhance the correlation between joy and exercise.



STREET TREE REPLACEMENT



STREET TREE REPLACEMENT

EXISTING TREES



*Bosque Elm
Broadway Avenue*

*Empire Ash
Broadway Avenue*

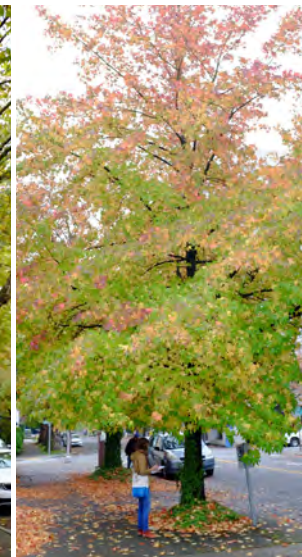
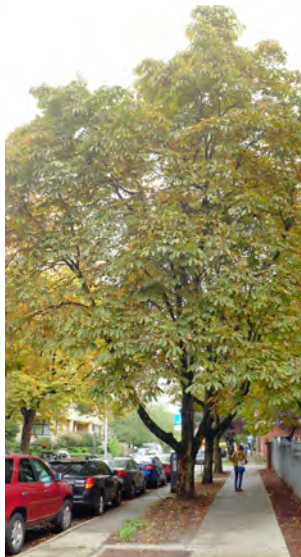
*Maple
James Street*

*Maple
Minor Avenue*

*Dogwood
Minor Avenue*

*Honey Locust
Minor Avenue*

*Oak
Minor Avenue*



*Sweetgum
University Street*

*Horse Chestnut
University Street*

*Hawthorn
University Street*

*Maple
Boylston Avenue*

*Sycamore
Boylston Avenue*

*Sweetgum
Boylston Avenue*

*Cherry
Minor Avenue*

STREET TREE REPLACEMENT

PROPOSED TREES



Acer freemanii 'Autumn Blaze'
Autumn Blaze Maple



Acer saccharum
Sugar Maple



Aesculus flava
Yellow Buckeye



Carpinus betulus 'Fastigiata'
European Hornbeam



Liquidambar styraciflua
Sweetgum



Metasequoia glyptostroboides
Dawn Redwood



Nyssa sylvatica
Tupelo



Platanus x acerifolia
London Planetree



Pyrus calleryana 'Cambridge'
Cambridge Pear



Quercus coccinea



Sophora japonica 'Regent'
Japanese Pagodatree



Zelkova serrata
Zelkova

SAC MEETING: PUBLIC BENEFITS REVIEW

SWEDISH REQUESTS TONIGHT FOR SAC

- SAC feedback on Boren Avenue Feature Wall
- SAC feedback on First Hill Mile and other Public Benefit Features
- SAC feedback on Boylston Triangle design
- SAC vote, if possible, that Boylston Triangle design meets with the intent of the MIMP standards