

PRSR STD
US Postage
PAID
Seattle, WA
Permit No. 2871

HIGHLAND PARK WAY SW AND SW HOLDEN ST SAFETY PROJECT

Share your input on proposed improvements including a permanent signalized intersection at Highland Park Way SW and SW Holden St.

Share Your Input

Phone: 206-900-8741

Email: HighlandHolden@seattle.gov

Survey: www.surveymonkey.com/r/HighlandHolden

Compártanos su opinión y sugerencias sobre las mejoras a la seguridad que habrá en el área de Highland Park. Para traducciones, llame al: (206) 727-8697

Share your input on proposed improvements including a permanent signalized intersection at Highland Park Way SW and SW Holden St.



HIGHLAND PARK WAY SW AND SW HOLDEN ST SAFETY PROJECT

New traffic signal, protected bike lane, curb bulbs

OVERVIEW

Highland Park Way SW is a major north-south route in West Seattle, providing access to SR 99, SR 509, I-5, and the Duwamish Trail. The intersection at SW Holden St serves more than 22,000 drivers, transit riders, pedestrians and bicyclists daily.

WHY IMPROVEMENTS ARE NEEDED

The Highland Park Way SW and SW Holden St intersection has been the site of several crashes and issues due to poor sight distances, high speeds, travel lane confusion, and a lack of pedestrian facilities.

IMPROVEMENTS BEING CONSIDERED

This project is in the early stage of design, around 10%, and community input will help shape future design. SDOT staff will also take into account new traffic volumes with the closure of the West Seattle Bridge and restrictions on the Low Bridge (Spokane Street Bridge).

Proposed improvements at this early design stage include:

- A permanent signalized intersection with concrete curb bulbs and sidewalks
- Protected bike lane between SW Holden St and W Marginal Way
- Several additional safety improvements throughout the neighborhood

SHARE YOUR INPUT

SDOT is in the early design stage of permanent improvements at the Highland Park Way SW and SW Holden Street intersection. These improvements are shown in the graphic on the opposite side of this mailer. A video further describing the improvements can be found on our project webpage:

www.seattle.gov/transportation/HighlandParkSafety

STAY INFORMED

Sign up for email updates on our project website:

www.seattle.gov/transportation/HighlandParkSafety

This project is funded by the 9-year Levy to Move Seattle, approved by voters in 2015. Learn more about the levy at www.seattle.gov/LevytoMoveSeattle.

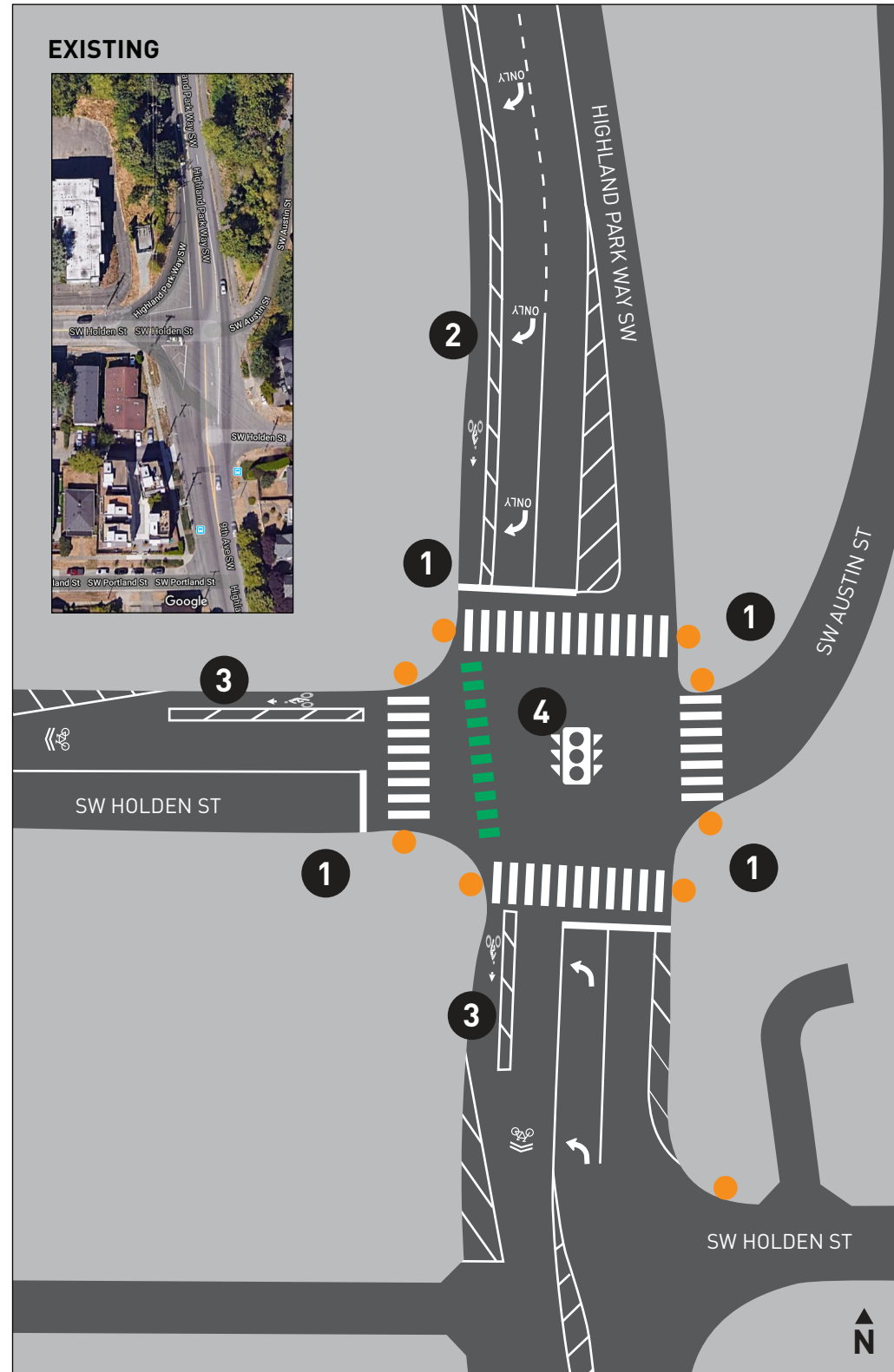


TEMPORARY SIGNAL INSTALLED IN EARLY APRIL 2020

To help manage traffic during the emergency closure of the West Seattle Bridge, a temporary signal was installed at Highland Park Way SW and SW Holden Street. SDOT is continuing to plan for the permanent safety improvements project while the temporary signal remains in place.

PROPOSED IMPROVEMENTS AT HIGHLAND PARK WAY AND SW HOLDEN STREET

The graphic below shows proposed improvements near the intersection of Highland Park Way SW and SW Holden Street. A video further describing the improvements can be found on our project webpage: www.seattle.gov/transportation/HighlandParkSafety



This project is in the early stage of design, around 10%, and community input will help shape future design. SDOT staff will also take into account new traffic volumes with the closure of the West Seattle Bridge and restrictions on the Low Bridge (Spokane Street Bridge).

- 1 Landscaping opportunities
- 2 Southbound uphill protected bike lane to West Marginal Way
- 3 Protected bike lane
- 4 Upgrade to 4-way signal with bike phase
- All corners rebuilt with ramps
- ▤ New crosswalk
- ▤▤ Separate bike crossing

SHARE YOUR INPUT

Share your input on these proposed changes to the Highland Park area.

Phone: 206-900-8741

Email: HighlandHolden@seattle.gov

Survey: www.surveymonkey.com/r/HighlandHolden

Compártanos su opinión y sugerencias sobre las mejoras a la seguridad que habrá en el área de Highland Park. Para traducciones, llame al: (206) 727-8697

PROJECT AREA (10% PLANS)

