

# 12<sup>th</sup> Ave S PBL

## Seattle Bicycle Advisory Board

Megan Hoyt  
Christiana Farrell  
Serena Lehman

January 2, 2019

SDOT



City of Seattle

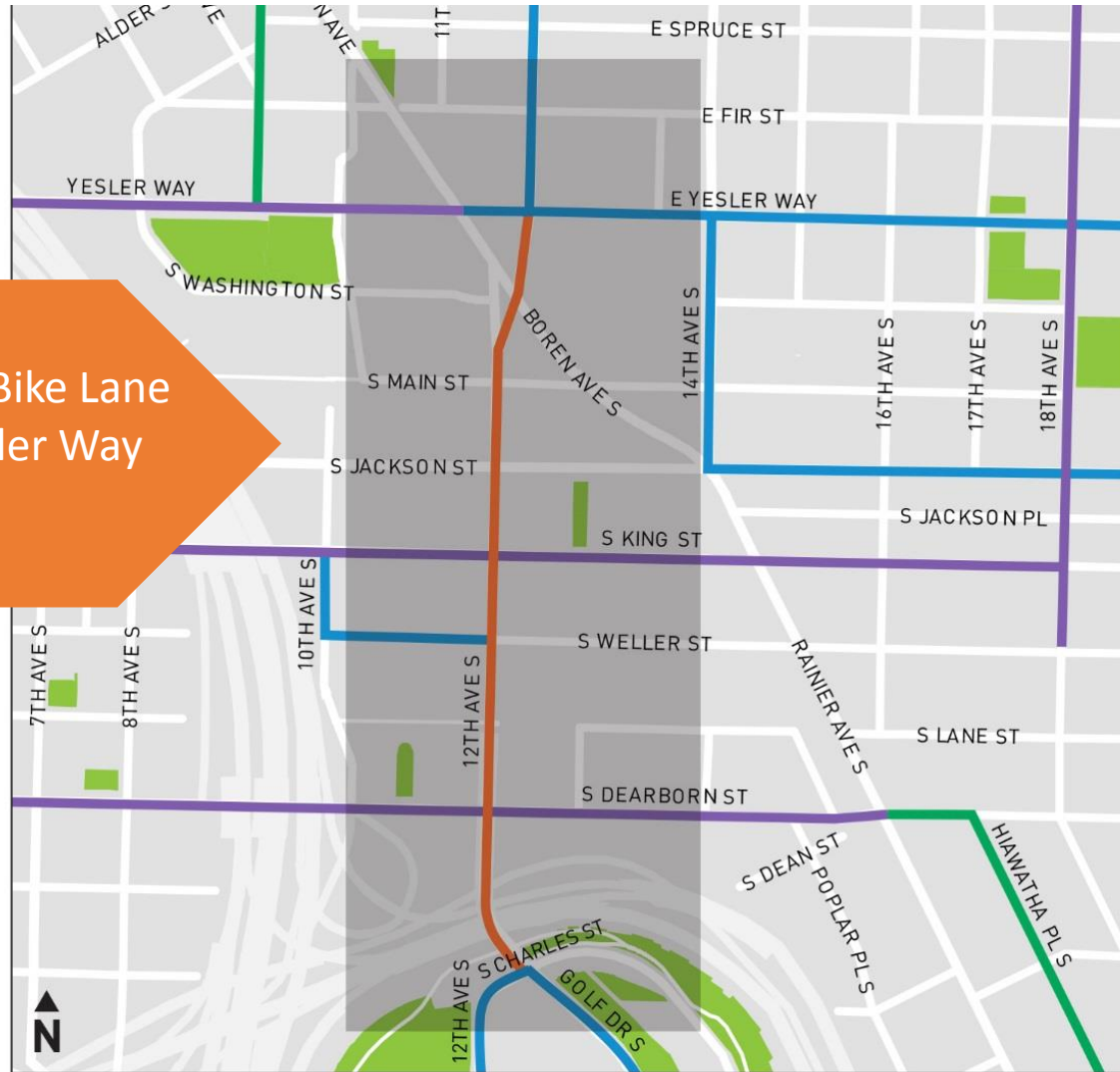
# Meeting Goals

- Introductions
  - Megan Hoyt – Project Manager
  - Christiana Farrell – Project Developer
  - Serena Lehman – BMP Implementation Plan Program Manager
- Provide update on implementation of 12<sup>th</sup> Ave S PBL
  - Yesler to King
  - King to Charles
- Timeline and Challenges



# Bicycle Master Plan (BMP) Recommendations

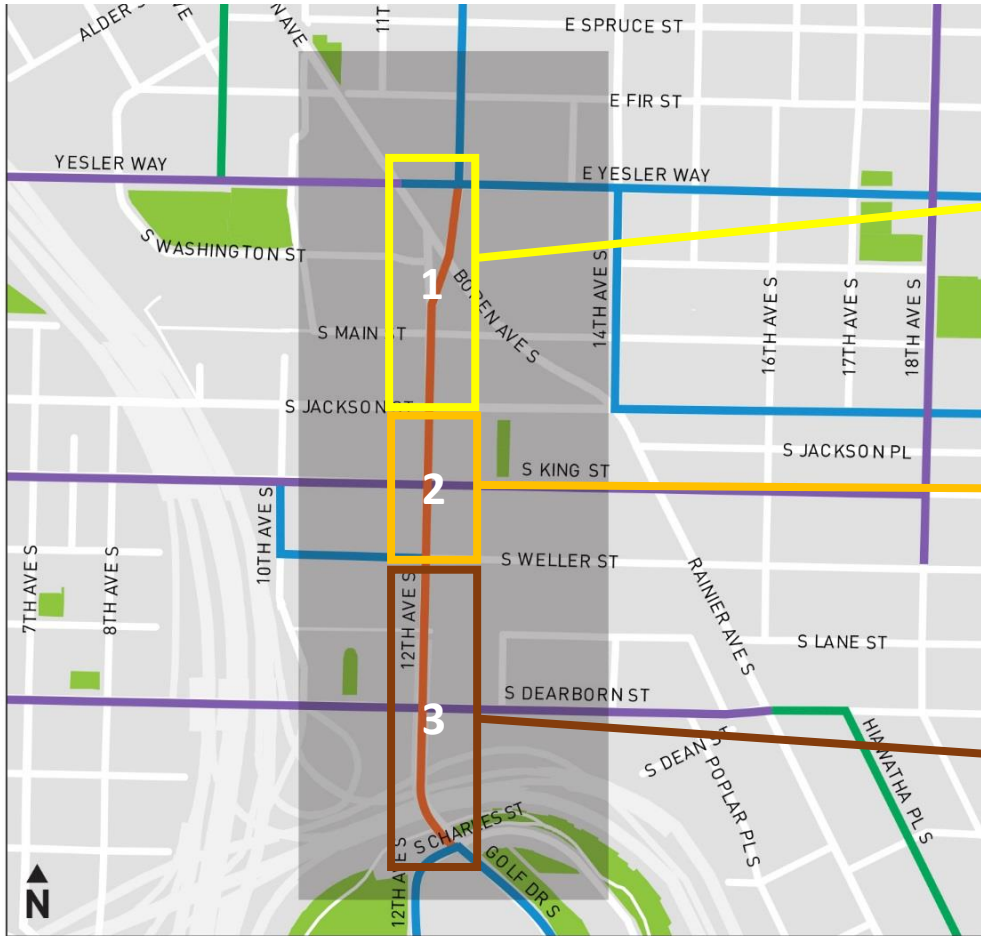
BMP Implementation Plan recommends a Protected Bike Lane on 12<sup>th</sup> Ave S between Yesler Way and Charles St



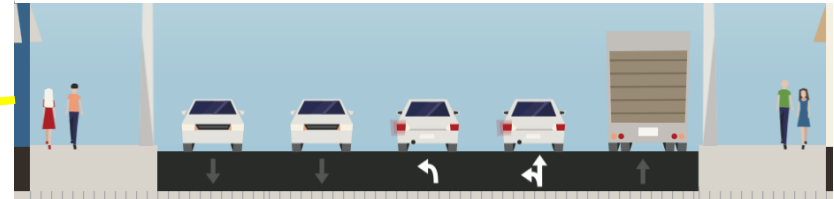
- Existing bike lane
- Planned all-abilities bike facility
- Planned 12th Ave bike lanes
- Existing all-abilities bike facility
- Focus area



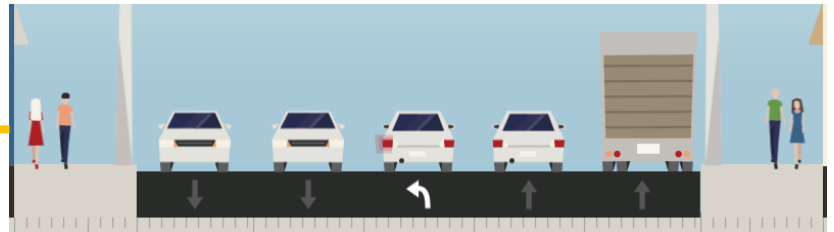
# Typical Existing Cross-Section



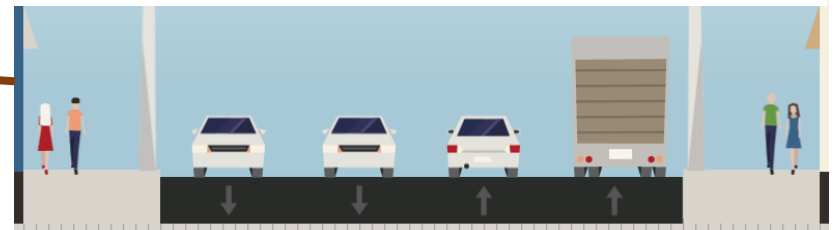
## 1. Yesler to Jackson



## 2. Jackson to Weller



## 3. Weller to Charles



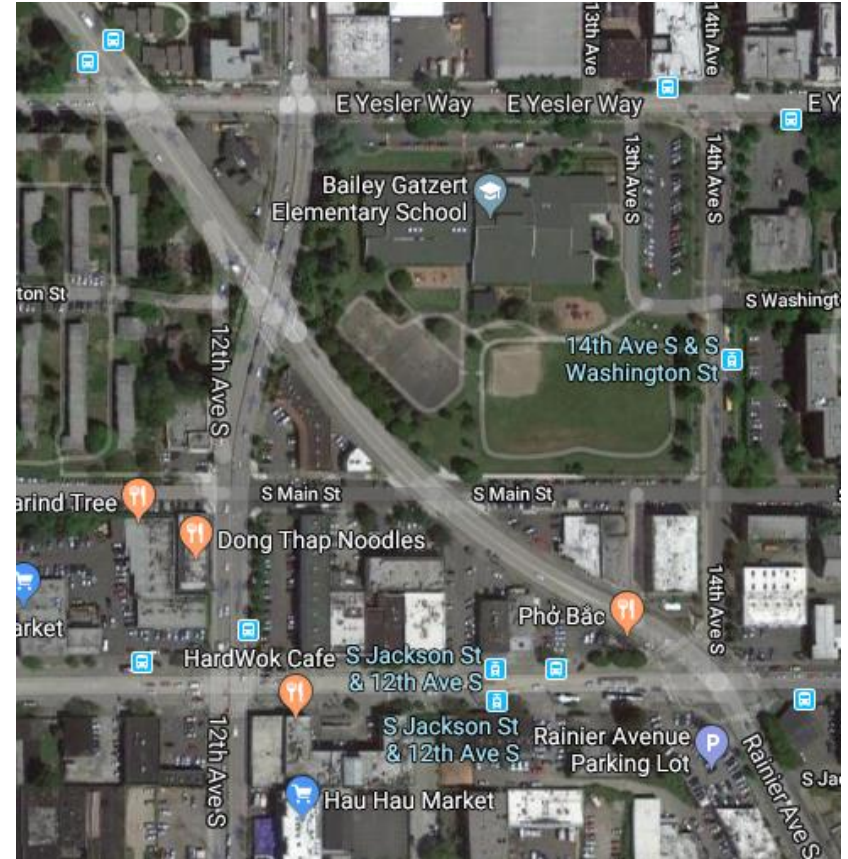
# 12<sup>th</sup> Ave / Boren Modal Constraints/Overlaps



● Safety Hot Spot

# Modal Priorities

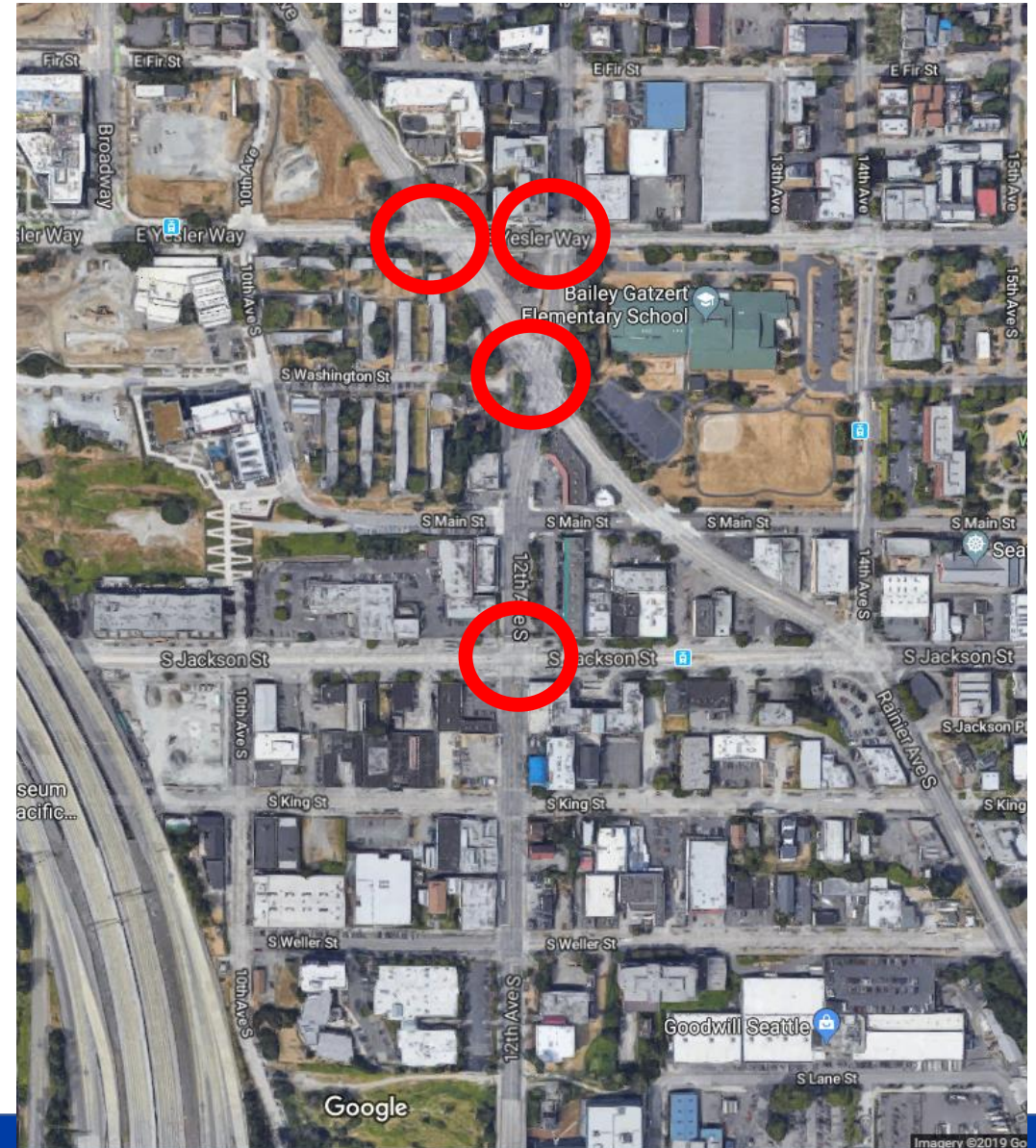
1. Significant investment in Streetcar speed and reliability at Yesler and Jackson
2. Transit needs on S Jackson St and on Boren Ave
3. Bicycle safety/mobility on 12th



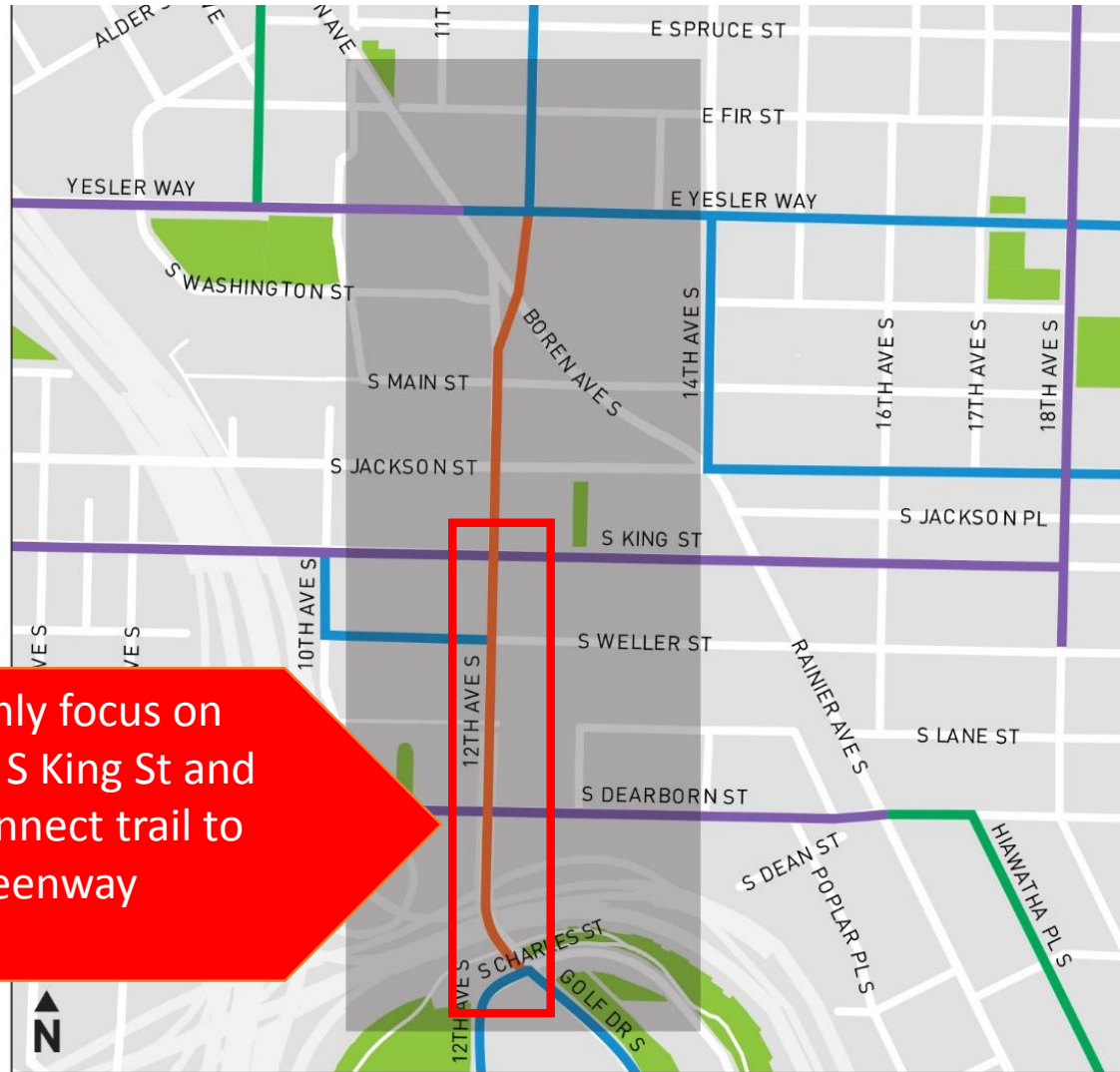


# Modeling Results

- Traffic model developed Yesler to Charles
  - One travel lane removed each direction for PBL
- Impacts to Yesler, Boren, and Jackson intersections add significant delay and queue lengths
  - Especially delays streetcar and transit
- Impact to King and Weller intersections is minimal



# Vision Zero 12<sup>th</sup> Ave S Project



This project will only focus on 12 Ave S between S King St and S Charles St, to connect trail to Neighborhood Greenway

- Existing bike lane
- Planned all-abilities bike facility
- Planned 12th Ave bike lanes
- Existing all-abilities bike facility
- Focus area
- Project Extents



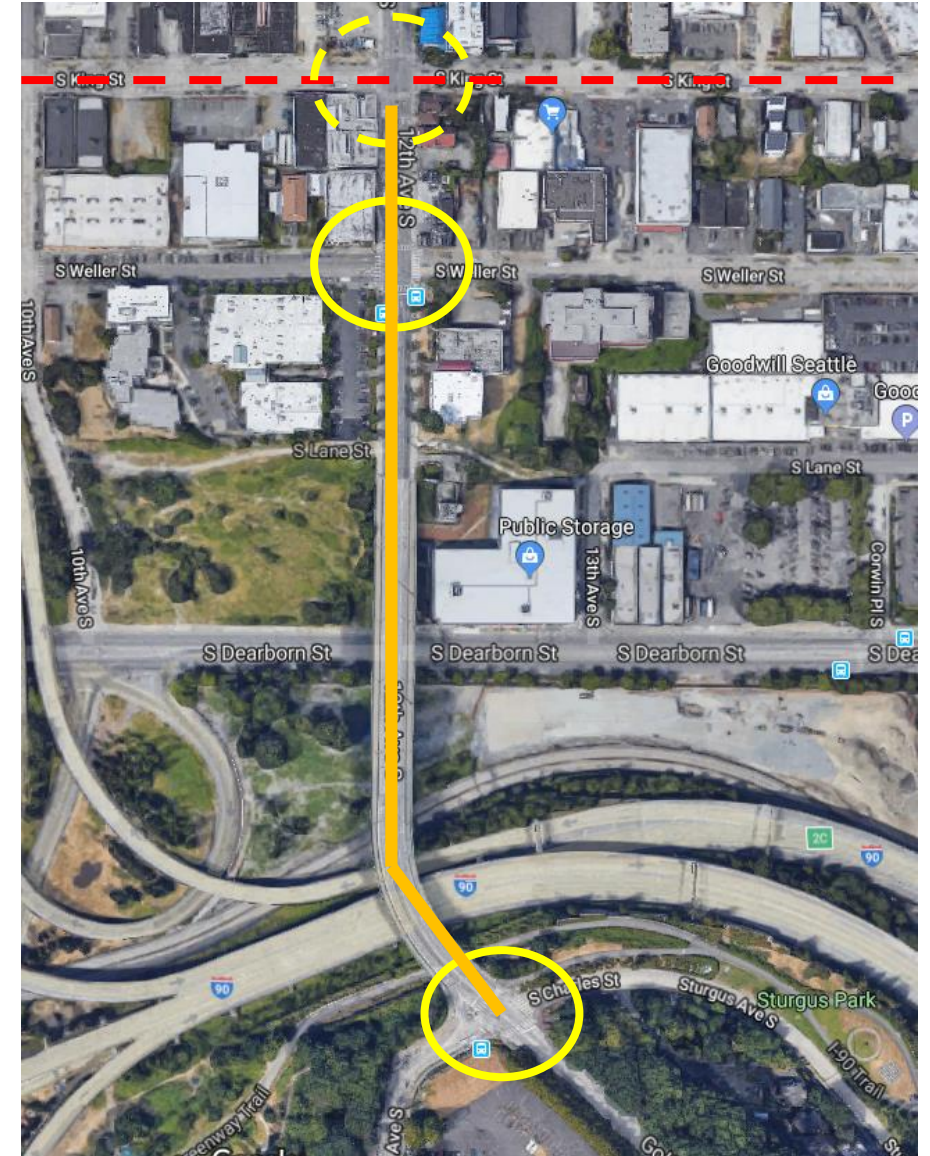


# Bicycle Advocate Priority Bicycle Investment



# Proposed Scope

- Safety projects:
  - S Weller St
  - S Charles St/Golf Dr S
- Protected Bike Lane: S King St to S Charles St to connect trail and Neighborhood Greenway
- Construct portions of S King St Neighborhood Greenway at King St intersection



# Transit Facilities

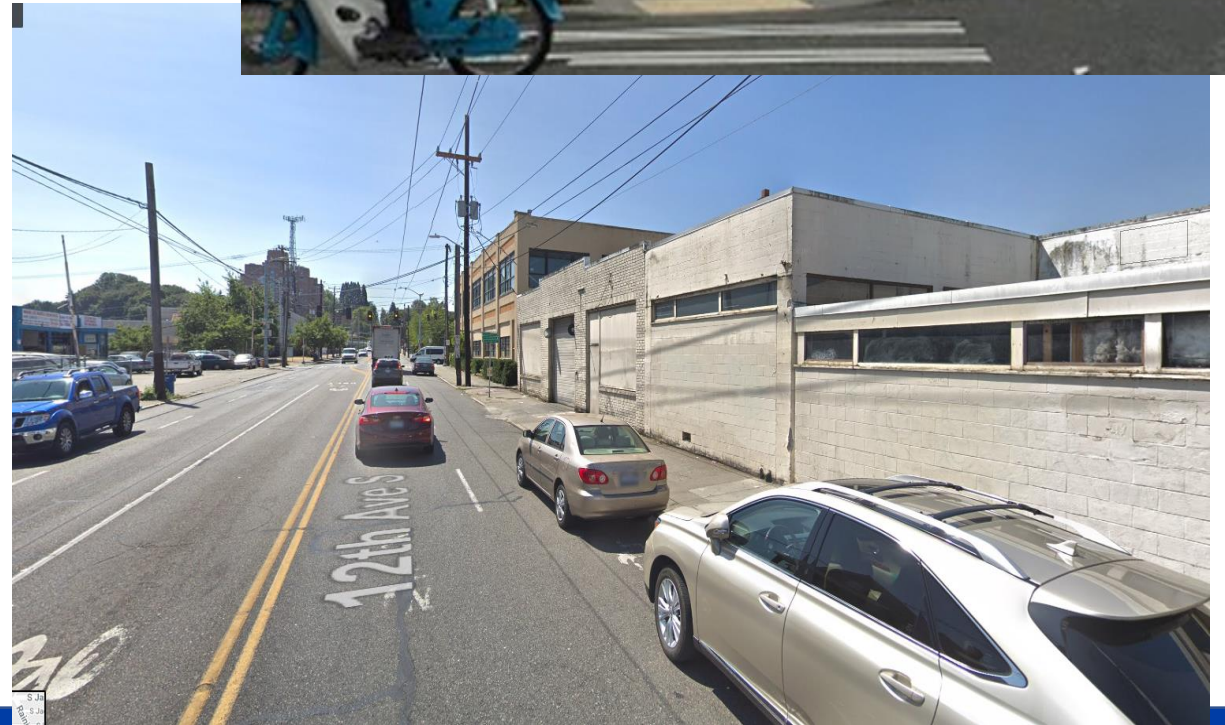
- High ridership
  - Need for in-lane stops and efficient bus routes with minimal delay
- Transit dependent populations
  - SIHB, Navigation Center
  - Longer dwell times
  - Not able to add SB in-lane stop
- High number of transfers to S Jackson St





# Parking / Loading Needs

- Consistent business needs for freight loading with limited possibilities
- Concerns about reducing parking in Little Saigon Neighborhood
  - Park development
  - New residential and business construction



# Land Use Development

- Land use changes nearby
- Impact on traffic volumes and turning movements
- Adjacent properties
  - New Park
  - S King St developments & 10<sup>th</sup>/Jackson development
  - SIHB Building
  - Navigation Center
- Yesler Terrace



# Timeline

- February/March 2019 – Return to SBAB with Scope Details
- Q1 2019 – Finalize Scope
- 2019 – Design
- 2020 – Implementation (Late Summer)





# Questions?



