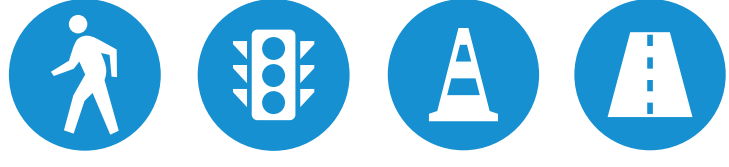




## Route 44



# U-District Segment, NE 45th St and 8th Ave NE

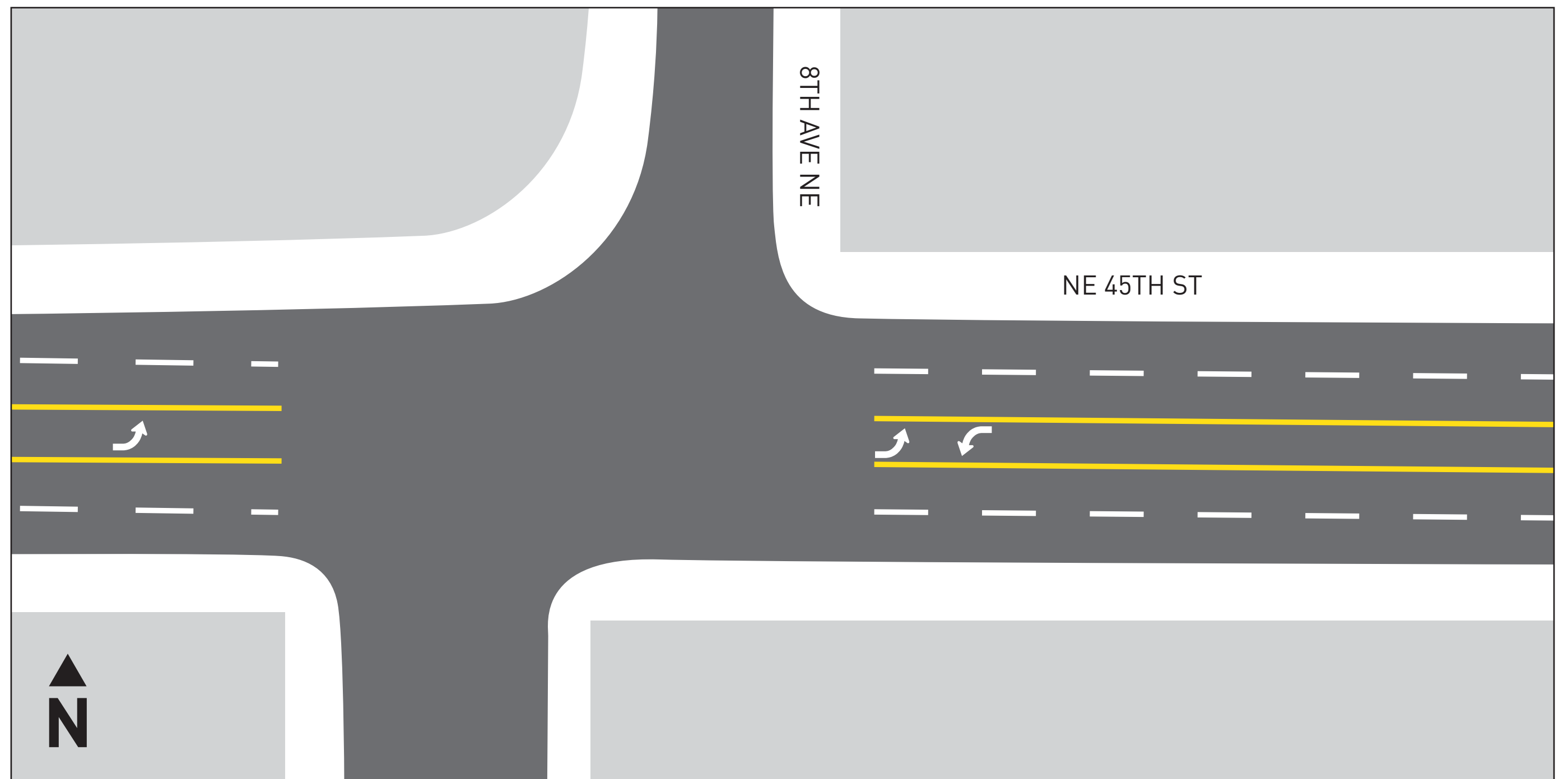
### Concept benefits:

This concept will provide safer passage for people walking across NE 45th St.

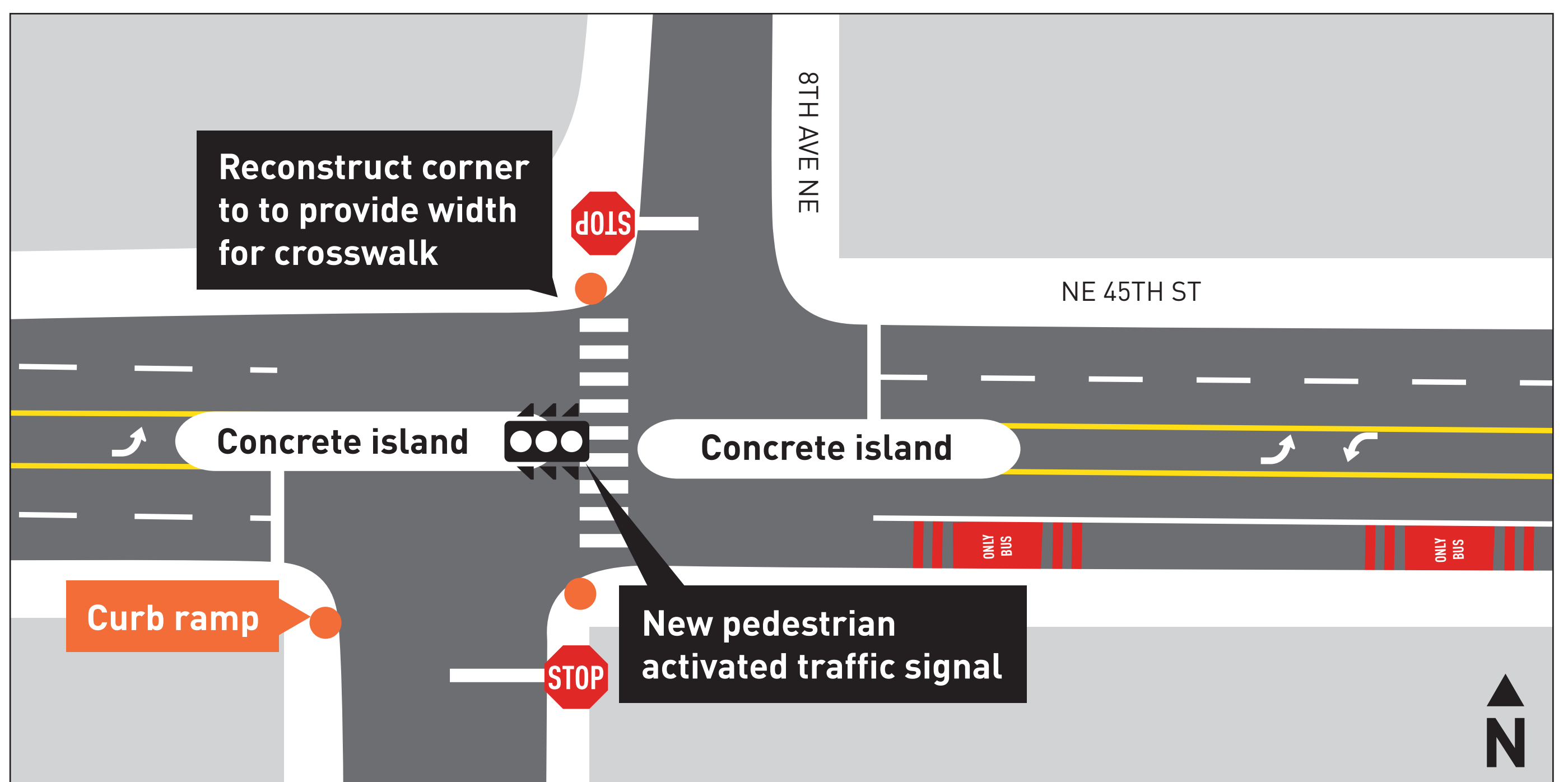
### This concept will:

- Add pedestrian crosswalk across NE 45th St
- Add traffic signal on NE 45th St
- Add concrete island on NE 45th St to restrict left turns for all legs of the 8th Ave NE intersection
- Reconstruct the NW corner of NE 45th St/ 8th Ave NE to provide curbspace for the new crosswalk
- Construct new curb ramps

## Before

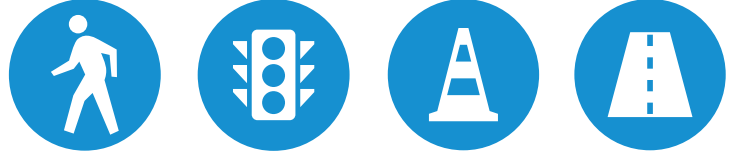


## After





## Route 44



# U-District Segment, NE 45th St at 9th Ave NE to 15th Ave NE

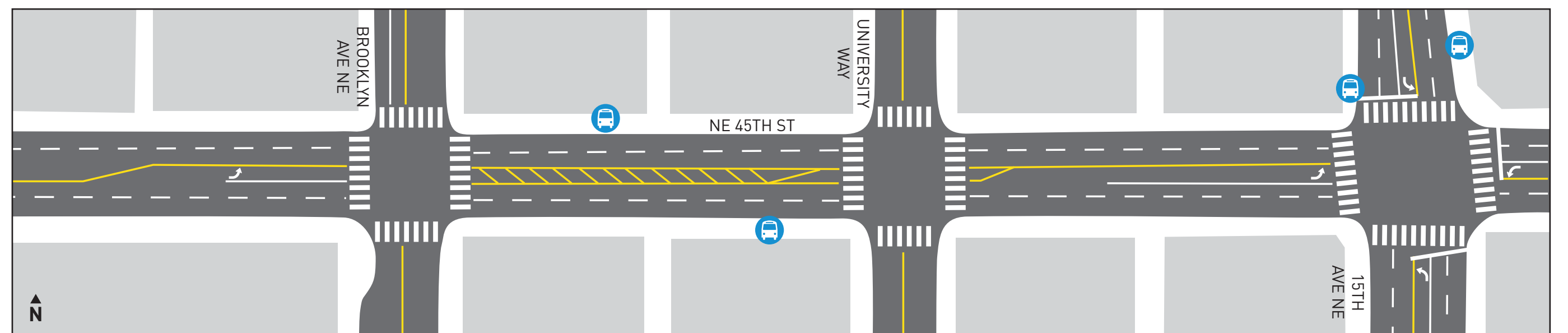
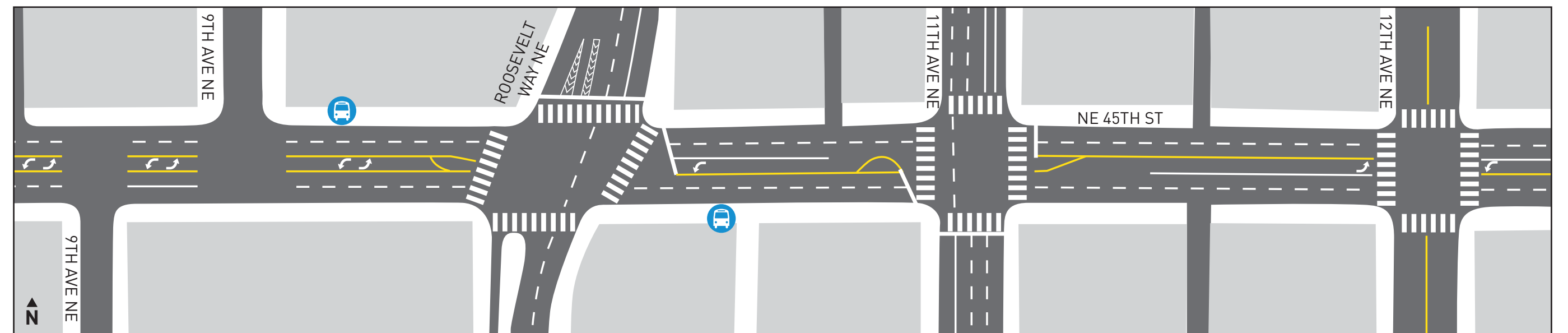
### Concept benefits:

Dedicated eastbound bus lane on NE 45th St will allow buses to move more efficiently through this congested area.

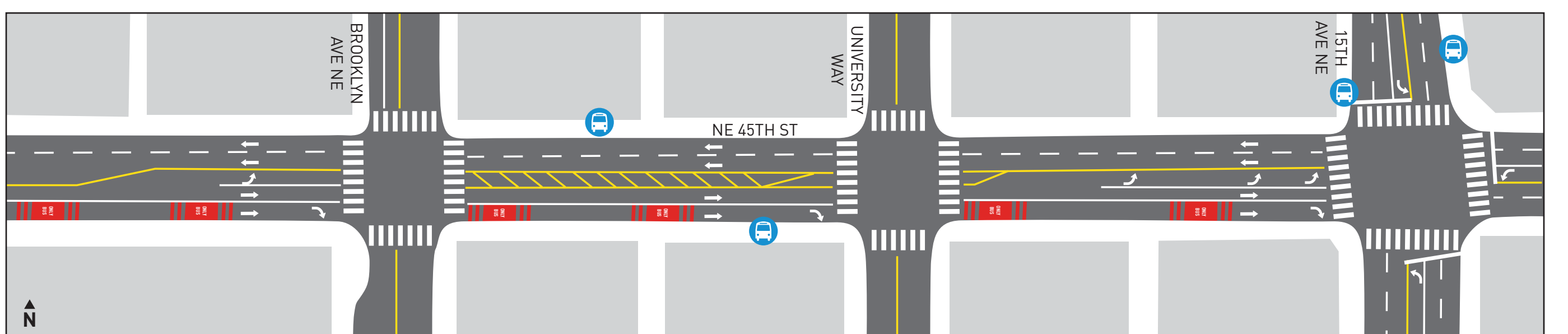
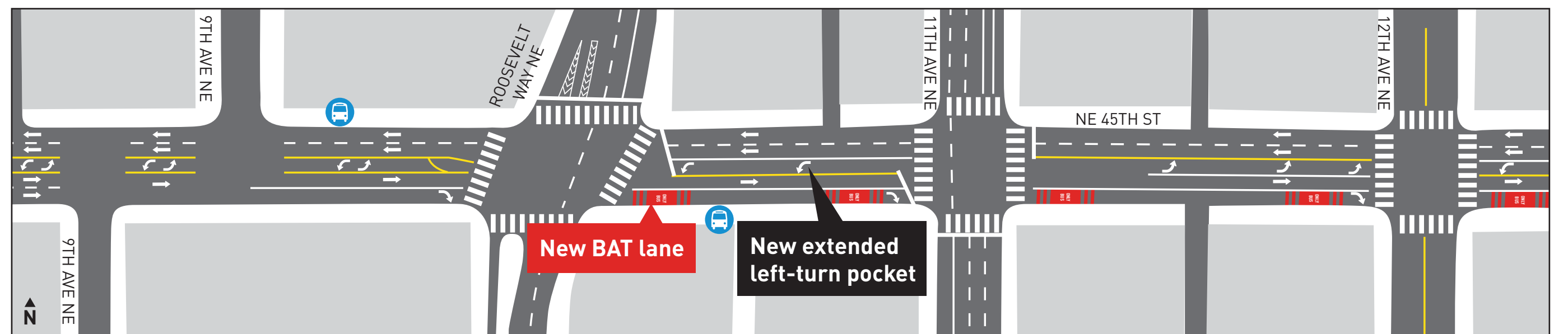
### This concept will:

- Create an eastbound bus only lane installed between Roosevelt Way NE and 15th Ave NE
- Remove one eastbound general-purpose lane
- Extend westbound left turn pocket for Roosevelt Way NE farther east

## Before

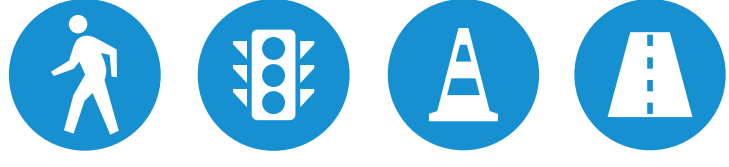


## After





## Route 44



# U-District Segment, 15th Ave NE at N 45th St to NE Pacific St

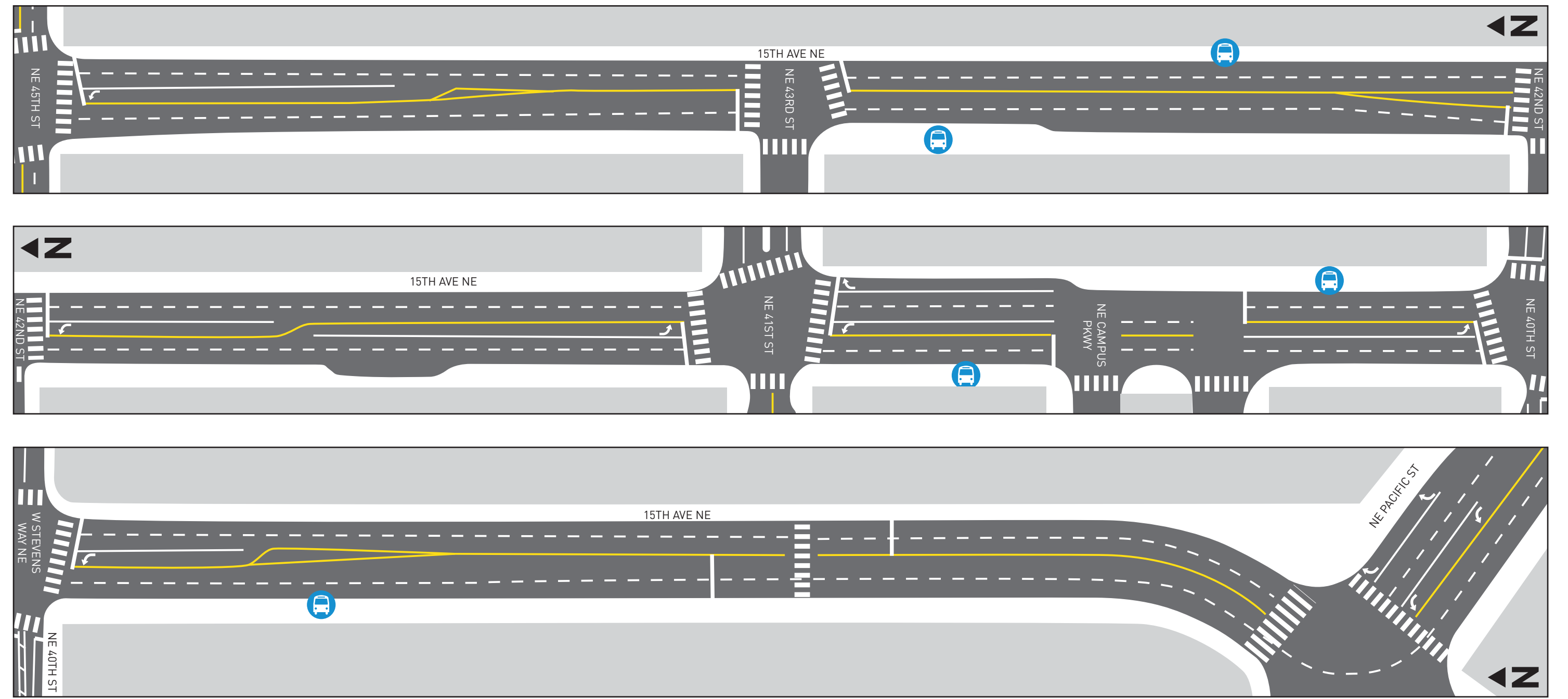
### Concept benefits:

Dedicated bus lanes will be added in the northbound and southbound directions between NE 45th St and NE Pacific St.

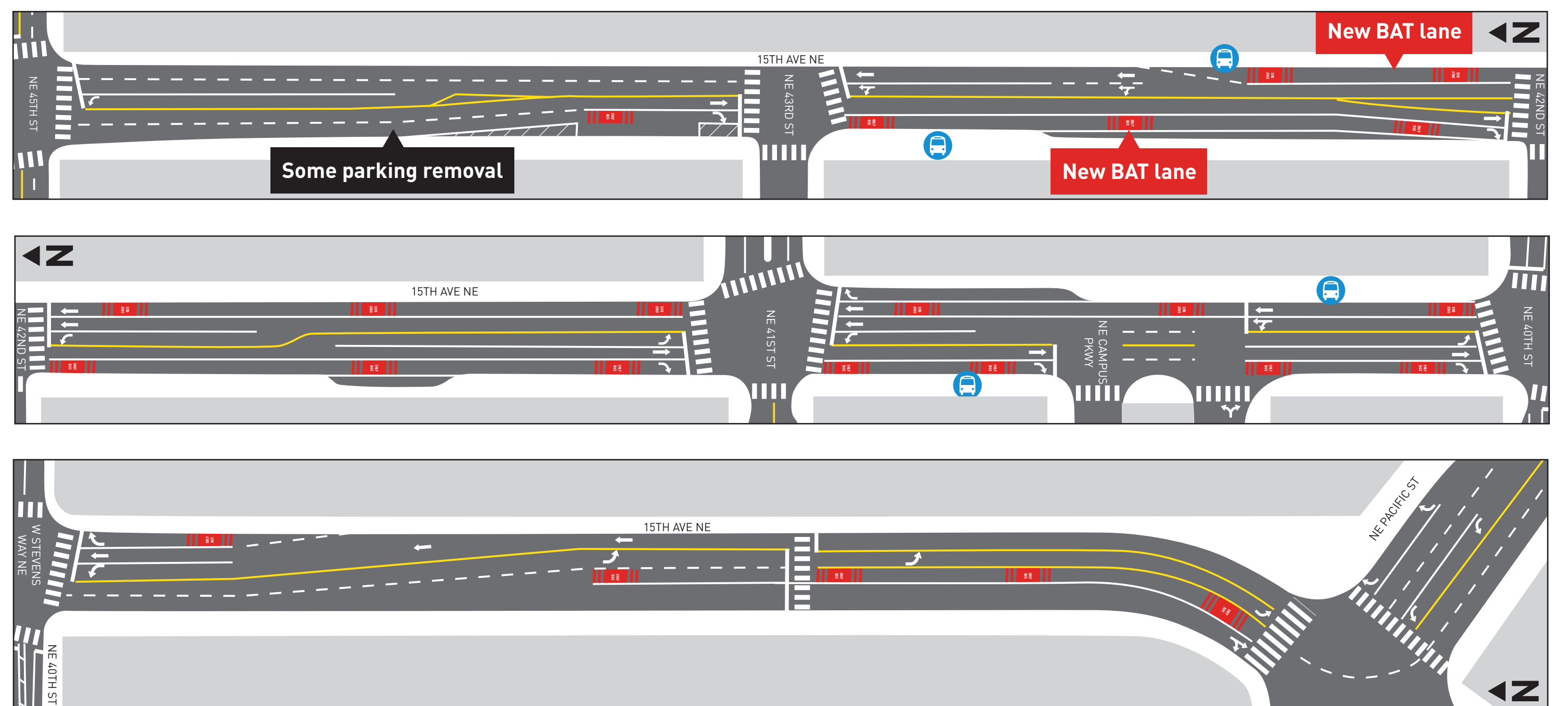
### This concept will:

- Create a southbound bus only lane from NE 45th St to NE Pacific St
- Create a northbound bus only lane from NE Pacific St to just south of NE 43rd St
- Require trolley overhead wire modifications

## Before



## After



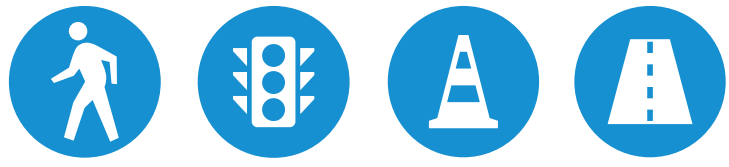
### Concept update:

The BAT lane between NE 43rd St and NE 45th St will be peak hour only rather than 24/7 to maintain the load zone just south of NE 45th St. From outreach it was determined that the load zone was needed at its current location.





## Route 44



# U-District Segment, 15th Ave NE at NE Pacific St

### Concept benefits:

This concept will provide a dedicated lane for southbound buses to turn left onto NE Pacific St, improving their efficiency traveling through the intersection.

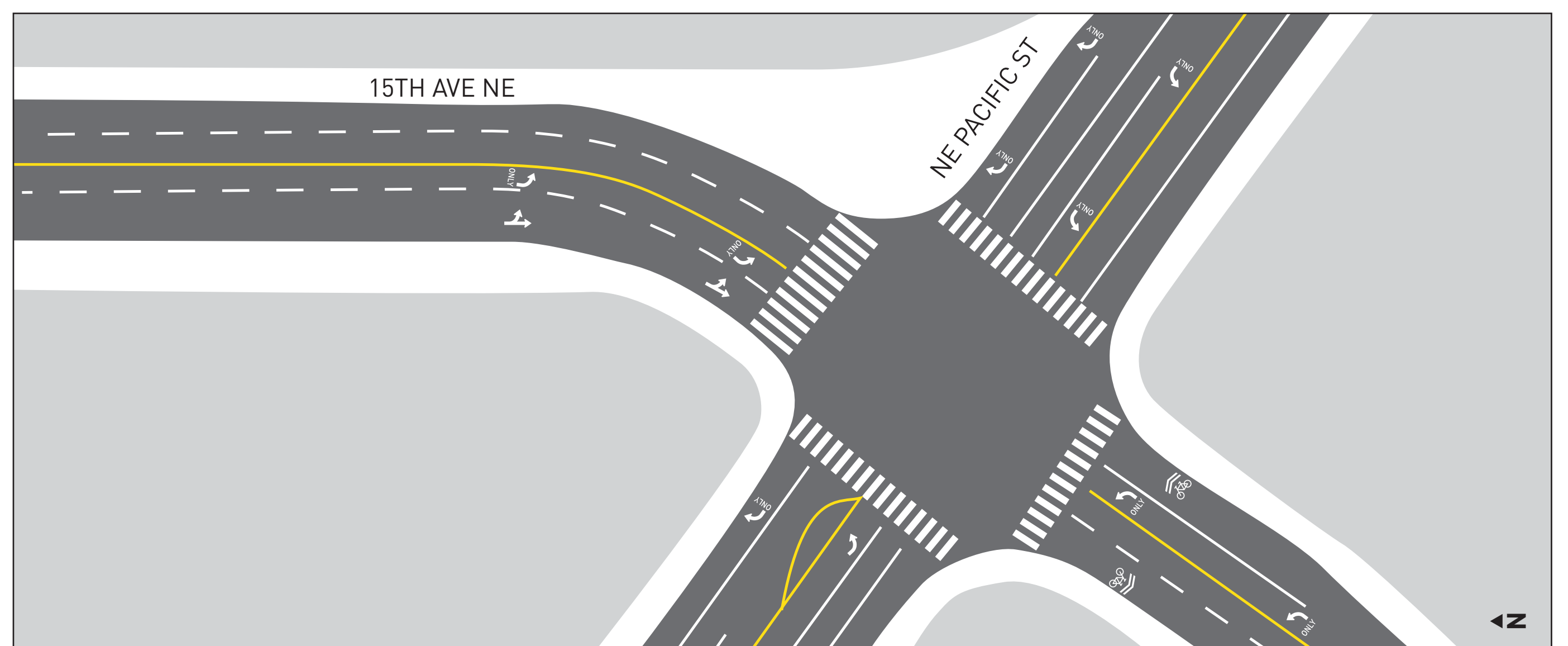
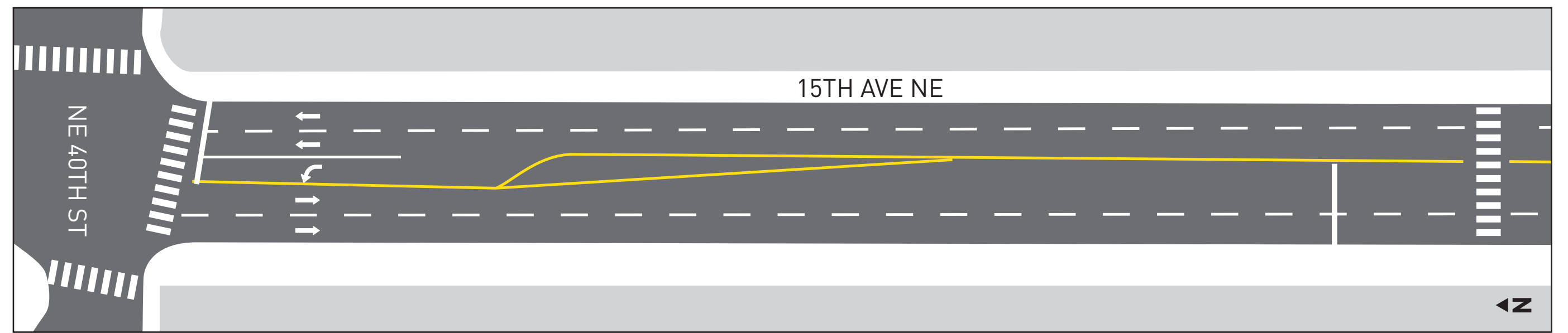
### This concept will:

- Add a bus only lane southbound through intersection at NE Pacific St
- Reduce 15th Ave NE northbound from 2 lanes to 1 lane north of NE Pacific St
- Require trolley overhead wire modifications

### Concept update:

In September 2021, King County Metro will add a bus stop on 15th Ave NE just south of the NE Pacific St intersection. The bus lane will be used by buses turning left onto Pacific St. Buses traveling south on 15th Ave past Pacific St will travel in the curb lane on 15th Ave as they approach Pacific St.

## Before



## After

