



**July 29, 2022**

Ms. Melanie Vance  
Washington State Department of Transportation  
Northwest Region Office  
P.O. Box 330310  
Seattle, WA 98133-9710

**Subject: Proposed Area of Potential Effects (APE) for the 2022 Safe Routes to School (FHWA) Project**

Dear Ms. Vance,

The Seattle Department of Transportation (SDOT) proposes to perform installation and upgrades of pedestrian infrastructure and related improvements across several segments within the Bitter Lake and Lake City neighborhoods. The project is receiving federal funding via the WSDOT Safe Routes to School grant, and therefore must comply with Section 106 of the National Historic Preservation Act (NHPA) of 1966, as amended. The APE letter will conform to WSDOT protocols as outlined in the WSDOT Local Agency Guidelines, May 2019 and the WSDOT Environmental Manual.

**Project Location**

The project is primarily located within the right-of-way of the Bitter Lake and Lake City neighborhoods of Seattle. SDOT will also work within some temporary construction easements (TCEs). There will be no permanent acquisition of property. The work is divided into three segments, as follows:

Greenwood segment

- North terminus: N 130th St and Greenwood Ave N
- South terminus: N 125th St and Greenwood Ave N
- Section/Township/Range: SE 24-26-3

1<sup>st</sup> Ave NW segment – North Neighborhood Greenway (NGW)

- North terminus: 1st Ave NW and NW 137th St
- South terminus: Greenwood Ave N and N 130th St
- Section/Township/Range: NE 24-26-3 and SE 24-26-3

1<sup>st</sup> Ave NW segment – South Neighborhood Greenway (NGW)

- North terminus: Palatine Ave N and N 130th St
- South terminus: 1st Ave NW and N 110th St
- Section/Township/Range: SE 24-26-3, NE 25-26-3, and SE 25-26-3

NE 135<sup>th</sup> St segment

- West terminus: NE 135th St and 26th Ave NE
- East terminus: NE 135th St and 37th Ave NE
- Section/Township/Range: SE 21-26-4 and SW 22-26-4

## **Project Undertaking**

The project proposes the following improvements within generally improved rights-of-way throughout all segments of the project area:

- Widen existing sidewalks
- Construct new sidewalks to connect existing sidewalk segments and provide a consistent pedestrian route
- Install new curb ramps
- Perform drainage improvements
- Establish new neighborhood greenways, including installation of bicycle wayfinding signs, bicycle markings and sharrows, and an asphalt pathway connecting two street ends within the NE 135<sup>th</sup> St segment right-of-way
- Install pedestrian facilities including new crosswalks, audible pedestrian signals, pedestrian countdown signals, and a new mid-block pedestrian signal (the latter within the 1<sup>st</sup> Ave NW segment)
- Install traffic calming measures including stop signs, speed humps, and speed zone designations

## **Area of Potential Effects**

For archaeological resources and Traditional Cultural Properties (TCP), the proposed APE includes the horizontal and vertical extent of ground disturbing activities. The proposed APE includes the parcels fronting proposed utility poles and signage that could alter the viewshed of resources that are older than fifty years. DAHP's Washington Information System for Architectural and Archaeological Records Data (WISAARD) online database was queried for information about Register Properties, Determined Eligible structures, and No Determination structures. Each segment of the project area is described separately in this document.

With the exception of private driveway apron replacements, all work is proposed within the developed street and sidewalk right-of-way. The majority of excavation work throughout all segments of the project area will be limited to two feet below ground surface (bgs). Small, discrete areas of deeper excavation will be performed when necessary to install infrastructure foundations, conduit, poles, or other specific purposes as described in each segment section, below. Based on SDOT's preliminary utility potholing and review of as-built plans for existing infrastructure, all excavation work is expected to occur within the horizontal and vertical extent of previous ground disturbing activity.

Overall, the project proposes to maintain the existing visual context within the APE for all three segments. The proposed above-ground changes are primarily relocation or replacement of existing utility poles and traffic signage. All proposed infrastructure installations and relocations are consistent with the height and general character of existing pedestrian, transit, and traffic signage and facilities found throughout the project area. Details of viewshed changes by segment are included as an attachment to this document.

### Greenwood Segment

Most excavation will be limited to two feet bgs. The following work will exceed two feet of excavation:

- Greenwood Ave N from N 125<sup>th</sup> St to N 132<sup>nd</sup> St: Excavation to six feet for storm drainage, three feet for bus shelter foundation conduit, three feet for pedestal foundation

The storm drainage work will connect to existing infrastructure, indicating the excavation in this area will occur within previously disturbed soil. Research and potholing efforts conducted by SDOT to confirm the existing ground disturbance are described below:

- Intersection of Greenwood Ave N and N 127<sup>th</sup> St: SDOT potholing effort located an existing 6" gas main at depths of 33" to 39" below ground surface
- Greenwood Ave N from N 132<sup>nd</sup> St to just north of N 127<sup>th</sup> St: City of Seattle Sewer Plan & Profile as-built dated 1950 shows sewer pipe system on west side of street at depths of approximately 9" to 22" below ground surface, depending on location
- Greenwood Ave N from midway between N 127<sup>th</sup> St and N 130<sup>th</sup> St to N 122<sup>nd</sup> St: City of Seattle Sewer Plan & Profile as-built dated 1950 shows sewer pipe system on east side of street at depths of approximately 9" to 15" below ground surface, depending on location
- Greenwood Ave NW from N 115<sup>th</sup> St to N 144<sup>th</sup> St: City of Seattle Department of Engineering as-built dated 1947 shows existing water main infrastructure throughout the project area

The following table summarizes the parcels within the Greenwood segment with potential viewshed changes due to utility pole and signage work, and with structures greater than or equal to 50 years old:

Address	WISAARD name	WISAARD designation	Year built (via King County)
12748 Greenwood Ave N	No entry	No designation	1966
12714 Greenwood Ave N	No entry	No designation	1963
12700 Greenwood Ave N	No entry	No designation	1958

#### 1<sup>st</sup> Ave NW Neighborhood Greenway

All excavation in this segment will be limited to two feet bgs.

The following table summarizes the parcels within the 1<sup>st</sup> Ave NW Neighborhood Greenway segment with potential viewshed changes due to utility pole and signage work, and with structures greater than or equal to 50 years old:

Address	WISAARD name	WISAARD designation	Year built (via King County unless noted)
106 NW 136 <sup>th</sup> St	No entry	No designation	1927
102 N 136 <sup>th</sup> St	No entry	No designation	1927
107 N 136 <sup>th</sup> St	No entry	No designation	1947
103 NW 136 <sup>th</sup> St	No entry	No designation	1942
102 NW 135 <sup>th</sup> Pl	No entry	No designation	1948
105 NW 135 <sup>th</sup> Pl	No entry	No designation	1948
102 NW 132 <sup>nd</sup> St	No entry	No designation	1936
102 N 132 <sup>nd</sup> St	No entry	No designation	1962
125 N 132 <sup>nd</sup> St	No entry	No designation	1949
13128 Palatine Ave N	No entry	No designation	1946
13047 Greenwood Ave N / 13051 Greenwood Ave N	Broadview Lutheran Memorial Lutheran Church	Inventory - Determined Eligible	1957 (via WISAARD)
13201 Greenwood Ave N	(No resource name assigned)	Inventory - Determined Not Eligible	1968 (via WISAARD)

13052 Greenwood Ave N	Broadview Thomson School	Inventory - Determined Eligible	1963 (via WISAARD)
12759 Palatine Ave N	No entry	No designation	1948
12701 Palatine Ave N	No entry	No designation	1954
12704 Palatine Ave N	No entry	No designation	1947
12702 1 <sup>st</sup> Ave NW	No entry	No designation	1951
104 NW 127 <sup>th</sup> St	No entry	No designation	1948
12557 1 <sup>st</sup> Ave NW	No entry	No designation	1946
12205 1 <sup>st</sup> Ave NW	No entry	No designation	1948
12202 1 <sup>st</sup> Ave NW	No entry	No designation	1948
105 N 122 <sup>nd</sup> St	No entry	No designation	1949
12055 1 <sup>st</sup> Ave NW	No entry	No designation	1941
12001 1 <sup>st</sup> Ave NW	No entry	No designation	1947
12002 1 <sup>st</sup> Ave NW	No entry	No designation	1946
103 NW 120 <sup>th</sup> St	No entry	No designation	1910
104 NW 117 <sup>th</sup> St	No entry	No designation	1916
106 N 117 <sup>th</sup> St	No entry	No designation	1948
11556 1 <sup>st</sup> Ave NW	No entry	No designation	1944
11639 1 <sup>st</sup> Ave NW	No entry	No designation	1946
11601 1 <sup>st</sup> Ave NW	No entry	No designation	1941
11507 1 <sup>st</sup> Ave NW	No entry	No designation	1941
102 NW 112 <sup>th</sup> St	No entry	No designation	1939
11202 1 <sup>st</sup> Ave NW	No entry	No designation	1920
11060 1 <sup>st</sup> Ave NW	No entry	No designation	1926
101 NW 112 <sup>th</sup> St	No entry	No designation	1952
102 NW 110 <sup>th</sup> St	No entry	No designation	1916
11004 1 <sup>st</sup> Ave NW	No entry	No designation	1929

#### NE 135<sup>th</sup> St Segment

The majority of excavation in this segment will be at two feet bgs or shallower. The following work will excavate to deeper than two feet bgs:

- NE 135<sup>th</sup> St between Lake City Way NE and 35<sup>th</sup> Ave NE: Excavation to 11 feet bgs for storm drainage; excavation ranging from two feet bgs to three feet bgs for installation of a cast-in-place retaining wall
- NE 135<sup>th</sup> St between 35<sup>th</sup> Ave NE and 36<sup>th</sup> Ave NE: Excavation to four feet bgs for service conduit and rectangular rapid-flashing beacon (RRFB) footing

Previous excavation has been completed in this area, including for underground utility installation. The storm drainage work will connect to existing infrastructure, indicating the excavation in this area will occur within previously disturbed soil.

The following table summarizes the parcels within the NE 135<sup>th</sup> segment with potential viewshed changes due to utility pole and signage work, and with structures greater than or equal to 50 years old:

Address	WISAARD name	WISAARD designation	Year built (via King County unless noted)
2625 NE 135 <sup>th</sup> St	(No resource name assigned)	No Determination	1950 (via WISAARD)
2712 NE 135 <sup>th</sup> St	No entry	No designation	1963
2715 NE 135 <sup>th</sup> St	No entry	No designation	1963
2718 NE 135 <sup>th</sup> St	No entry	No designation	1963
3000 NE 135 <sup>th</sup> St	No entry	No designation	1947
3003 NE 135 <sup>th</sup> St	No entry	No designation	1951
13357 30 <sup>th</sup> Ave NE	No entry	No designation	1952
13505 Lake City Way NE	No entry	No designation	1954
13350 Lake City Way NE	Del Mastro's Autoland Dealership / Seattle Tree Preservation	No Determination	1950 (via WISAARD)
3315 NE 135 <sup>th</sup> St	No entry	No designation	1955
3504 NE 135 <sup>th</sup> St	No entry	No designation	1952
3524 NE 135 <sup>th</sup> St	No entry	No designation	1928
13502 36 <sup>th</sup> Ave NE	No entry	No designation	1944
3641 NE 135 <sup>th</sup> St	No entry	No designation	1950
3737 NE 135 <sup>th</sup> St	Cedar Park Elementary	No Determination	1959 (via WISAARD)
13503 37 <sup>th</sup> Ave NE	No entry	No designation	1949

If you have any questions or comments concerning this proposed APE, please do not hesitate to contact me via phone at (206) 817-7461 or via email at [laurel.kanawyer@seattle.gov](mailto:laurel.kanawyer@seattle.gov). Thank you for your time.

Sincerely,  
Laurel Kanawyer  
Associate Environmental Analyst  
Seattle Department of Transportation

**Attachments:**

- A. Vicinity Map
- B. Proposed APE map for each segment
- C. Details of viewshed changes by segment

**Attachment A: Vicinity Map**



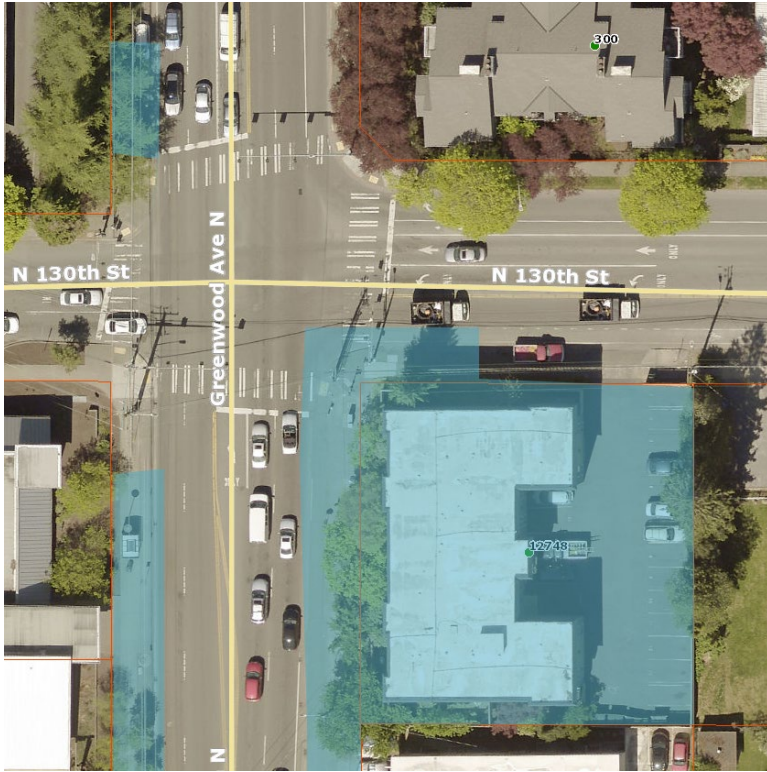
**Attachment B: Proposed APE Map By Segment**

Greenwood segment proposed APE – Full extent

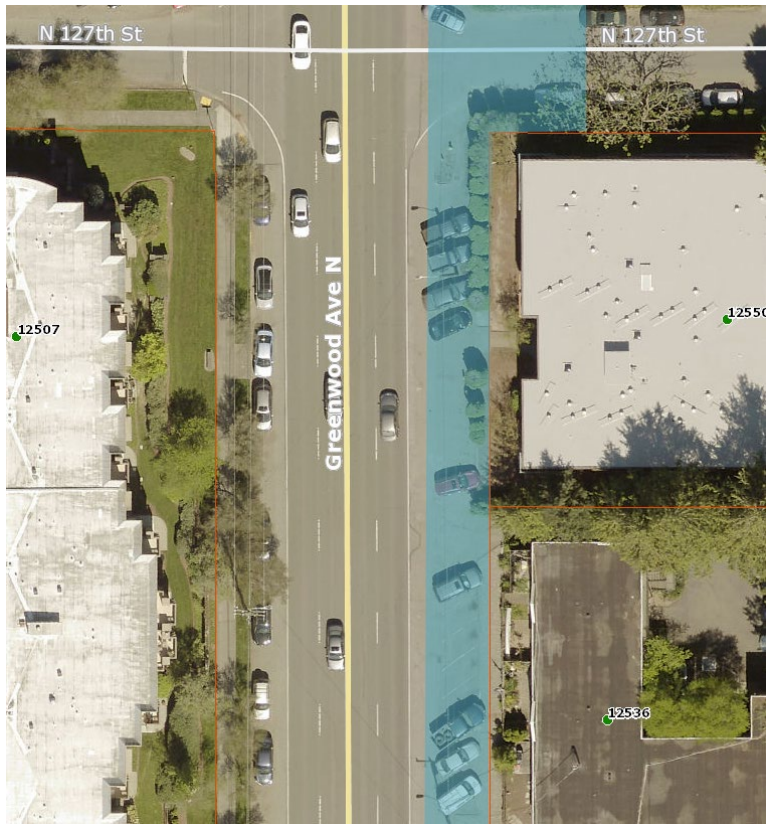
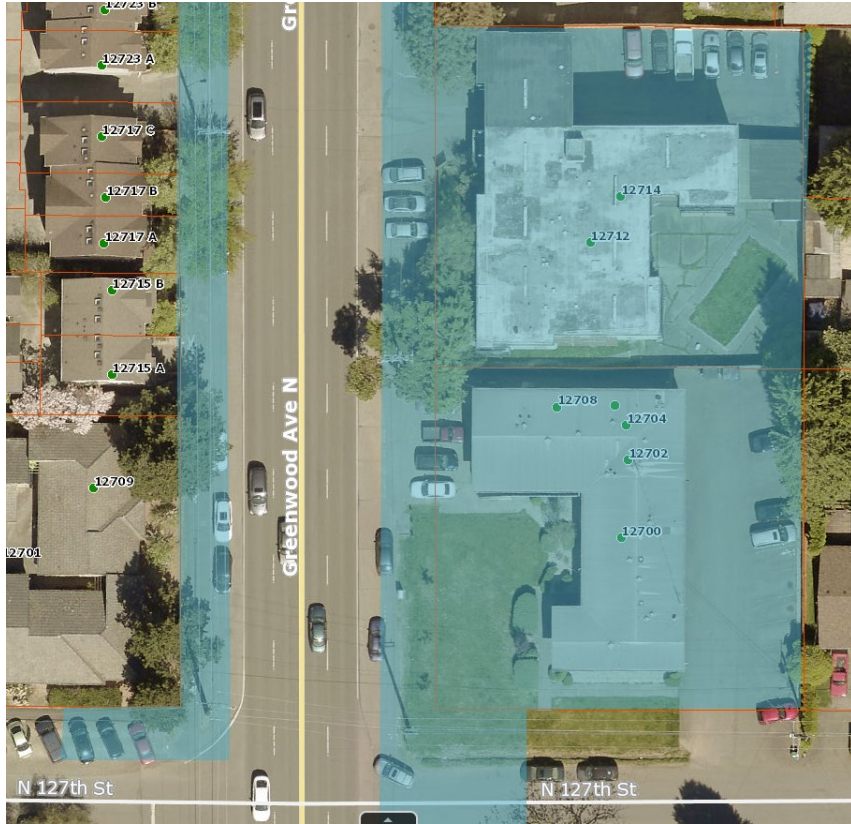
Note: APE is shown in blue over King County 2021 base map



Greenwood segment proposed APE – Details



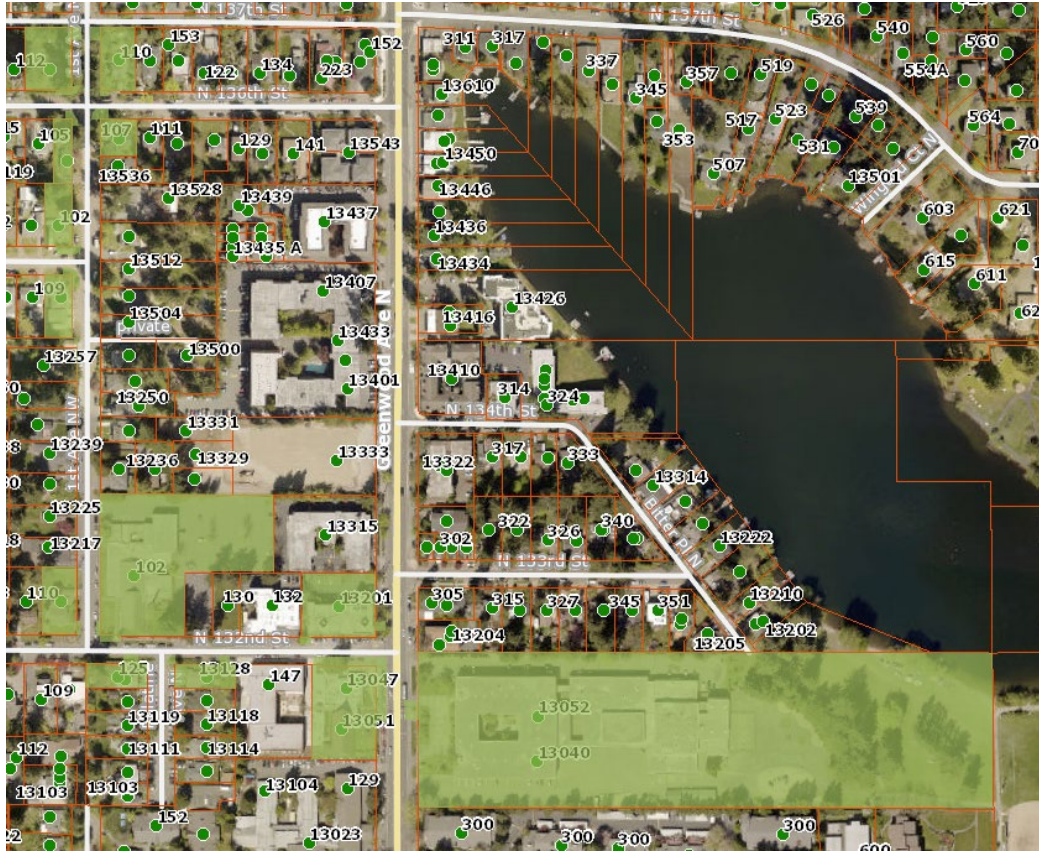




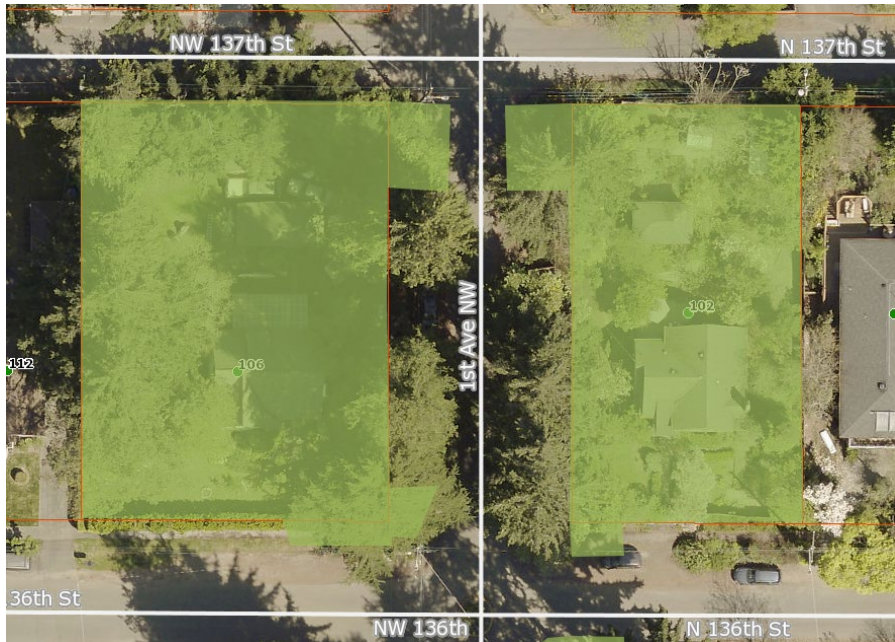


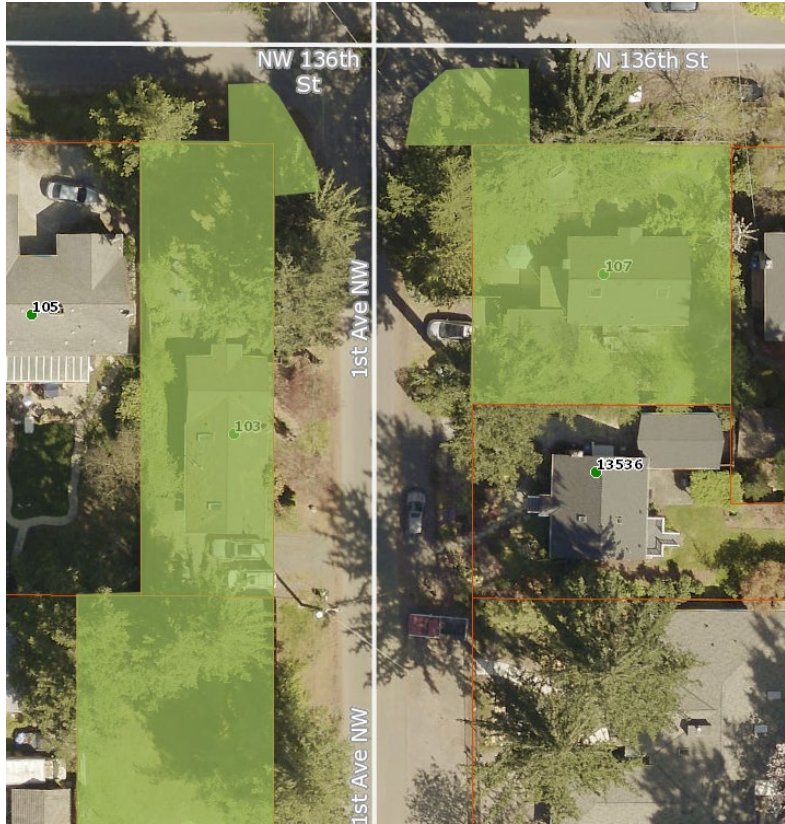
1<sup>st</sup> Ave NW – North segment proposed APE – Full extent

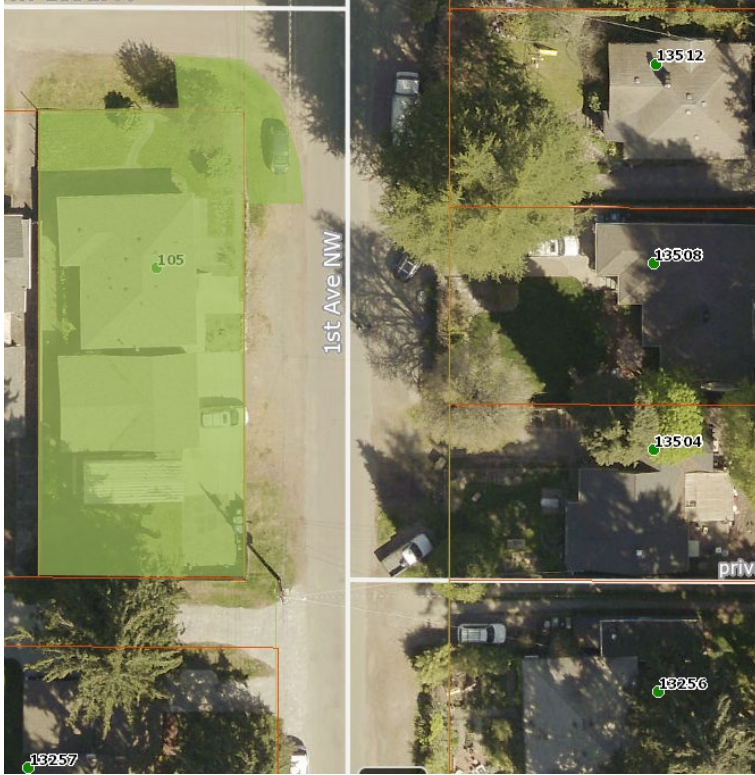
Note: APE is shown in green over King County 2021 base map



1<sup>st</sup> Ave NW – North segment proposed APE – Details















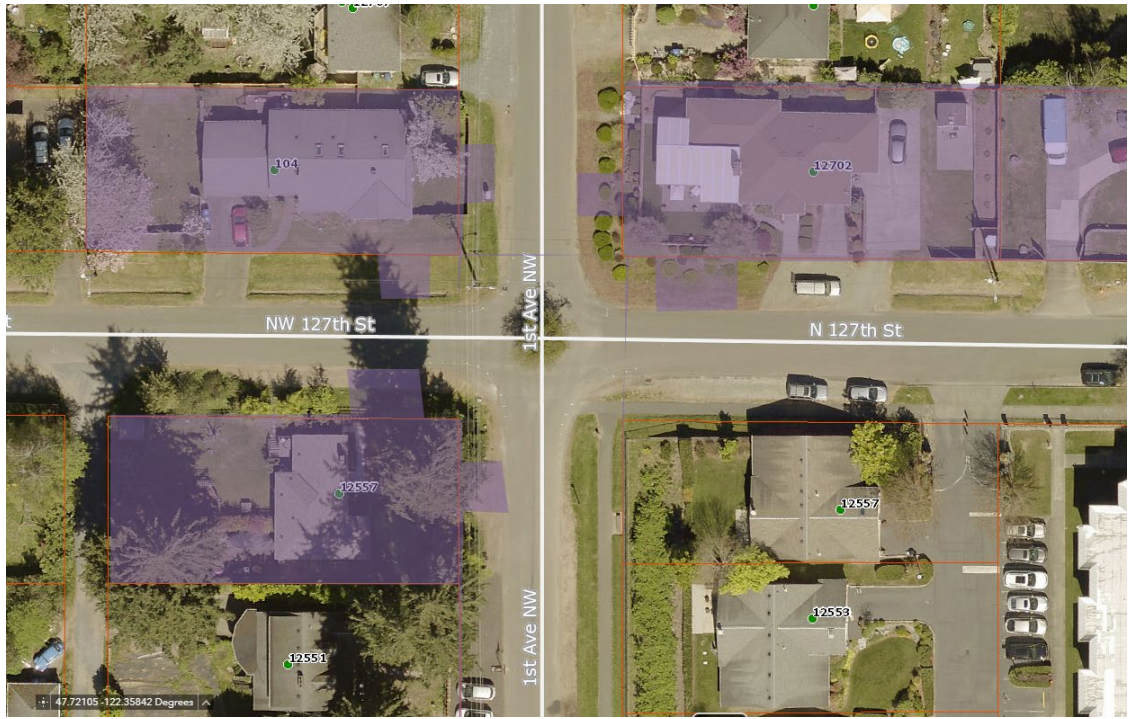
1<sup>st</sup> Ave NW – South segment proposed APE – Full extent

Note: APE is shown in purple over King County 2021 base map



1<sup>st</sup> Ave NW – South segment proposed APE – Details







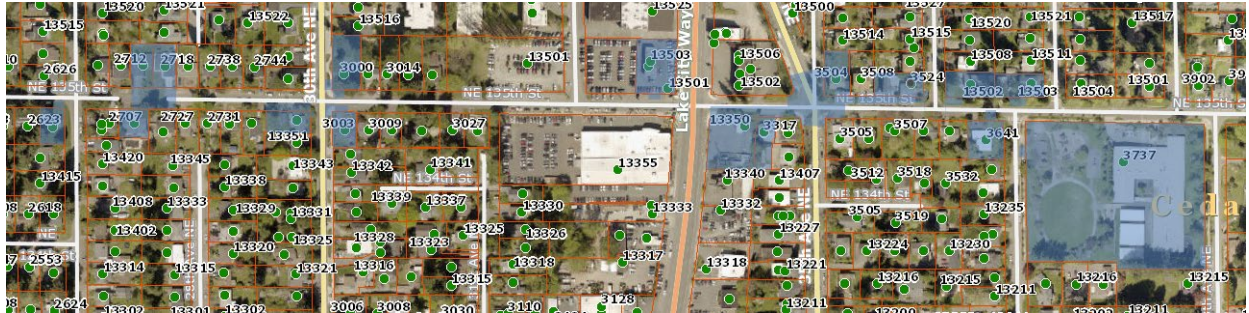






NE 135<sup>th</sup> St segment proposed APE – Full extent

Note: APE is shown in blue over King County 2021 base map



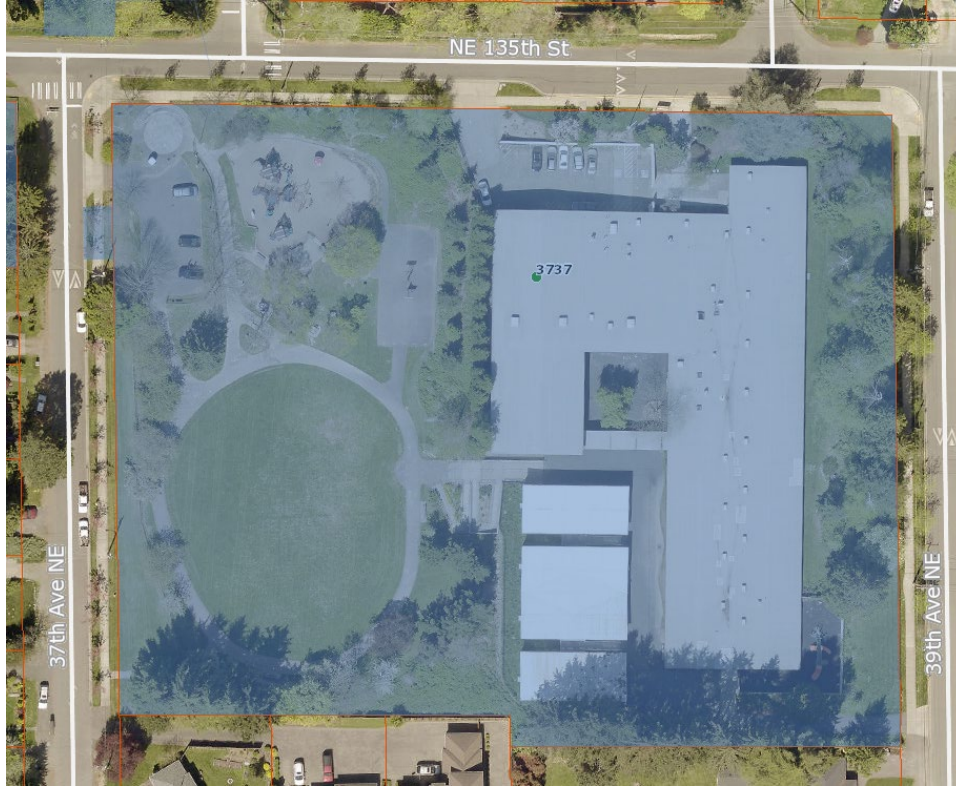
NE 135<sup>th</sup> St segment proposed APE – Details











## Attachment C: Details of Viewshed Changes By Segment

### Greenwood segment:

- Greenwood Ave N at N 130<sup>th</sup> St:
  - Install new and relocate existing pedestrian signal infrastructure, and relocate existing traffic signage on the southeast intersection corner southeast intersection corner.
- Greenwood Ave N between N 127<sup>th</sup> St and N 130<sup>th</sup> St:
  - Install cluster mailboxes and remove existing traffic signage on east side of Greenwood Ave N
- Greenwood Ave N at N 127<sup>th</sup> St:
  - Install traffic signage on all intersection corners
- Greenwood Ave N between N 125<sup>th</sup> St and N 127<sup>th</sup> St:
  - Install steps, handrail, and traffic signage on east side of Greenwood Ave N. Install bus stop shelter footing on east side of Greenwood Ave N, supporting future bus shelter and bench installation by King County Metro.

### 1<sup>st</sup> Ave NW neighborhood greenway segment:

- 1<sup>st</sup> Ave NW between N 136<sup>th</sup> St and N 137<sup>th</sup> St:
  - Install 10' pole and traffic signage on west side of NW 136<sup>th</sup> St
  - Install 10' pole and traffic signage on east side of N 136<sup>th</sup> St
- 1<sup>st</sup> Ave NW and N 136<sup>th</sup> St intersection:
  - Install 10' pole and traffic signage on northwest corner of intersection
  - Replace existing 10' pole and install new traffic signage on southwest corner of intersection
  - Remove existing 10' pole from northwest corner of intersection
- N 136<sup>th</sup> St at 1<sup>st</sup> Ave NW:
  - Install 5' pole and signage on north side of NW 136<sup>th</sup> St
  - Install 5' pole and signage on south side of N 136<sup>th</sup> St
- 1<sup>st</sup> Ave NW between N 135<sup>th</sup> Pl and N 136<sup>th</sup> St:
  - Install 5' pole and signage on west side of NW 136<sup>th</sup> St
- 1<sup>st</sup> Ave NW and N 135<sup>th</sup> Pl intersection:
  - Install 10' pole and signage on southwest corner of intersection
  - Install 5' pole and traffic signage on north side of NW 135<sup>th</sup> Pl
- 1<sup>st</sup> Ave NW between N 132<sup>nd</sup> St and N 135<sup>th</sup> Pl:
  - Install 5' pole and signage on west side of NW 135<sup>th</sup> Pl
  - Install 10' poles and traffic signage on west side of NW 132<sup>nd</sup> St
  - Install 10' poles and traffic signage on east side of N 132<sup>nd</sup> St
- N 132<sup>nd</sup> St between 1<sup>st</sup> Ave NW and Palatine Ave N:
  - Install 10' pole and traffic signage on north side of N 132<sup>nd</sup> St
- N 132<sup>nd</sup> St and Palatine Ave N intersection:
  - Install 10' pole, install new traffic signage, and relocate existing traffic signage on southeast corner of intersection
- N 132<sup>nd</sup> St between Palatine Ave N and Greenwood Ave N:
  - Install new 10' pole and traffic signage on south side of N 132<sup>nd</sup> St

- Replace existing 10' pole on north side of N 132<sup>nd</sup> St with new 12' pole and new traffic signage
- Greenwood Ave N at N 132<sup>nd</sup> St:
  - Remove existing 10' pole and traffic signage on west side of Greenwood Ave N
- Greenwood Ave N between N 130<sup>th</sup> St and N 132<sup>nd</sup> St:
  - Install new 10' poles and traffic signage on west side of Greenwood Ave N
  - Remove existing traffic signage on both sides of Greenwood Ave N
- Palatine Ave N between N 130<sup>th</sup> St and N 127<sup>th</sup> St:
  - Install new 12' pole and traffic signage on west side of Palatine Ave N
  - Install two new 10' poles and traffic signage on east side of Palatine Ave N
  - Install one new 10' pole and replace existing 5' pole with new 10' pole and traffic signage on west side of Palatine Ave N
- N 127<sup>th</sup> St between Palatine Ave N and 1<sup>st</sup> Ave NW:
  - Install four new 10' poles and traffic signage on both sides of N 127<sup>th</sup> St
- 1<sup>st</sup> Ave NW and N 127<sup>th</sup> St intersection:
  - Install new 5' pole and traffic signage on east side of 1<sup>st</sup> Ave NW
  - Install new 5' pole and traffic signage on northwest corner of intersection
  - Install new 5' pole, new 10' pole, and traffic signage on southwest corner of intersection
  - Install new 10' pole and traffic signage on southeast corner of intersection
- 1<sup>st</sup> Ave NW and N 125<sup>th</sup> St intersection:
  - Install new 10' or 12' pole and traffic signage on each corner of intersection
  - Install new 12' pole and traffic signage on northeast corner of intersection
  - Install new 10' pole and traffic signage on southwest corner of intersection
- 1<sup>st</sup> Ave NW and N 122<sup>nd</sup> St intersection:
  - Install 5' pole and traffic signage on northwest corner of intersection
  - Install new 5' pole and traffic signage on west frontage and install new 10' pole and traffic signage on northeast corner of intersection
  - Install two new 5' poles and traffic signage on southeast corner of intersection
  - Install new 10' pole and traffic signage on north frontage and install new 5' pole and traffic signage on southwest corner of intersection
- 1<sup>st</sup> Ave NW and N 120<sup>th</sup> St intersection:
  - Install new 10' pole and traffic signage on northeast corner of intersection
  - Install new 5' pole and traffic signage on northwest corner of intersection
  - Install new 5' pole and traffic signage on northeast corner of intersection
  - Replace existing 5' pole with new 10' pole and traffic signage on southwest corner of intersection
- 1<sup>st</sup> Ave NW and N 117<sup>th</sup> St intersection:
  - Install two new 5' poles and traffic signage on northwest corner of intersection
  - Install new 5' pole, new 10' pole, and traffic signage on northeast corner of intersection
  - Remove existing 10' pole and install new 5' pole and traffic signage on southeast corner of intersection
  - Install new 5' pole, new 10' pole, and traffic signage on southwest corner of intersection
- 1<sup>st</sup> Ave NW and N 116<sup>th</sup> St intersection:
  - Install new 5' pole and traffic signage on northwest corner of intersection

- Replace existing 10' pole and install new traffic signage on southwest corner of intersection
- Install new 5' pole and traffic signage on southwest corner of intersection
- 1<sup>st</sup> Ave NW and N 115<sup>th</sup> St intersection:
  - Install two new 5' poles and traffic signage on northwest corner of intersection
  - Install new 10' pole and traffic signage on northeast corner of intersection
  - Remove existing 10' pole and install new 5' pole and traffic signage on southeast corner of intersection
  - Install new 5' pole, new 10' pole, and traffic signage on southwest corner of intersection
- 1<sup>st</sup> Ave NW and NW 112th Pl (*sometimes shown as NW 113th St*) intersection:
  - Install new 5' pole, new 10' pole, and traffic signage on southwest corner of intersection
- 1<sup>st</sup> Ave NW and N 112th St intersection:
  - Remove existing 10' pole and install new 5' pole and traffic signage on northwest corner of intersection
  - Install new 5' pole, new 10' pole, and traffic signage on northeast corner of intersection
  - Remove existing metal pole, and install new 5' pole and traffic signage on southeast corner of intersection
  - Install new 5' pole, new 10' pole, and traffic signage on southwest corner of intersection
- 1<sup>st</sup> Ave NW and N 110<sup>th</sup> St intersection
  - Remove existing 5' pole and install new 10' pole and traffic signage on northwest corner of intersection
  - Relocate existing 10' pole and traffic signage from northwest corner to northeast corner of intersection
  - Install new 10' pole and traffic signage on northeast corner of intersection

NE 135<sup>th</sup> St segment:

- NE 135<sup>th</sup> St and 27<sup>th</sup> Ave NE intersection:
  - Remove 10' pole from northwest corner of intersection and move street name signage to existing pole on southwest corner of intersection
- NE 135<sup>th</sup> St from 27<sup>th</sup> Ave NE to 30<sup>th</sup> Ave NW:
  - Remove one tree and two wood posts, and replace one existing bollard, from approximate centerline of roadway
  - Adjust existing chain link fence from right-of-way to behind property lines on south side of NE 135<sup>th</sup> St
  - Adjust location of one existing 10' pole on each side of NE 135<sup>th</sup> St; install new traffic signage on both poles
- NE 135<sup>th</sup> St and 30<sup>th</sup> Ave NE intersection:
  - Install new 10' pole and traffic signage on northwest corner of intersection
  - Install two new 10' poles and traffic signage on northwest corner of intersection
  - Replace existing 12' pole with new 10' pole and traffic signage on northeast corner of intersection
  - Install two new 10' poles and traffic signage on southeast corner of intersection
  - Replace existing 10' pole, and install new 10' pole and traffic signage on southwest corner of intersection

- NE 135<sup>th</sup> St and 32<sup>nd</sup> Ave NE intersection:
  - Install new 10' pole and traffic signage on northwest corner of intersection
- NE 135<sup>th</sup> St from 32<sup>nd</sup> Ave NW to Lake City Way NE:
  - Replace existing 28" flexible delineator post with new 66" flexible delineator post and traffic signage on south side of NE 135<sup>th</sup> St
- NE 135<sup>th</sup> St from Lake City Way NE to 35<sup>th</sup> Ave NE/Erickson Pl NE:
  - Remove four trees and one guardrail, move existing chain link fence from right-of-way to behind property line, and install two new 10' poles and traffic signage on south side of NE 135<sup>th</sup> St
  - Relocate power pole (*note: work by Seattle City Light*), remove chain link fence, relocate mailbox, and remove wood fence on south side of NE 135<sup>th</sup> St
  - Replace existing 5' pole with new 10' pole, relocate existing 10' pole, and install traffic signage on both poles on north side of NE 135<sup>th</sup> St
- NE 135<sup>th</sup> St and 36<sup>th</sup> Ave NE intersection:
  - Remove existing 10' pole from northwest corner of intersection
  - Install new 5' pole, new 10' pole, and traffic signage on northwest corner of intersection
  - Install new 5' pole and traffic signage on northeast corner of intersection
- NE 135<sup>th</sup> St and 37<sup>th</sup> Ave NE intersection:
  - Install new 10' pole and traffic signage on southwest corner of intersection
  - Install new traffic signage on southeast corner of intersection
  - Maintain existing 10' pole and replace existing traffic signage on north side of NE 135<sup>th</sup> St