

# West Seattle Junction RPZ Study Results



West Seattle Junction Neighborhood Organization (JuNO)  
Ruth Harper and Jonathan Williams  
April 26, 2018



**Seattle**  
Department of  
Transportation

# Our mission, vision, and core values

**Mission:** deliver a high-quality transportation system for Seattle

**Vision:** connected people, places, and products

Committed to **5 core values** to create a city that is:

- Safe
- Interconnected
- Affordable
- Vibrant
- Innovative

For **all**

# Presentation overview

- RPZ request and study
- RPZ questions and discussion, potential next steps
- Other West Seattle studies (if time)
- General questions

# RPZ Request & Process

# Restricted Parking Zone (RPZ) Program

- What are RPZs designed to do?
  - Limit long-term, commuter parking from major demand generators
  - Allow short-term parking for customers and visitors to support thriving neighborhood business districts
- RPZs **do not**:
  - Guarantee or reserve anyone a parking space in the public right of way
  - Differentiate between types of residents

# How do RPZs work?

- Permits exempt residents from time limit
- Most other vehicles subject to 2-hour time limit
- 4 decal permits per household
- 1 guest permit per household
- Current fee is \$65/two years



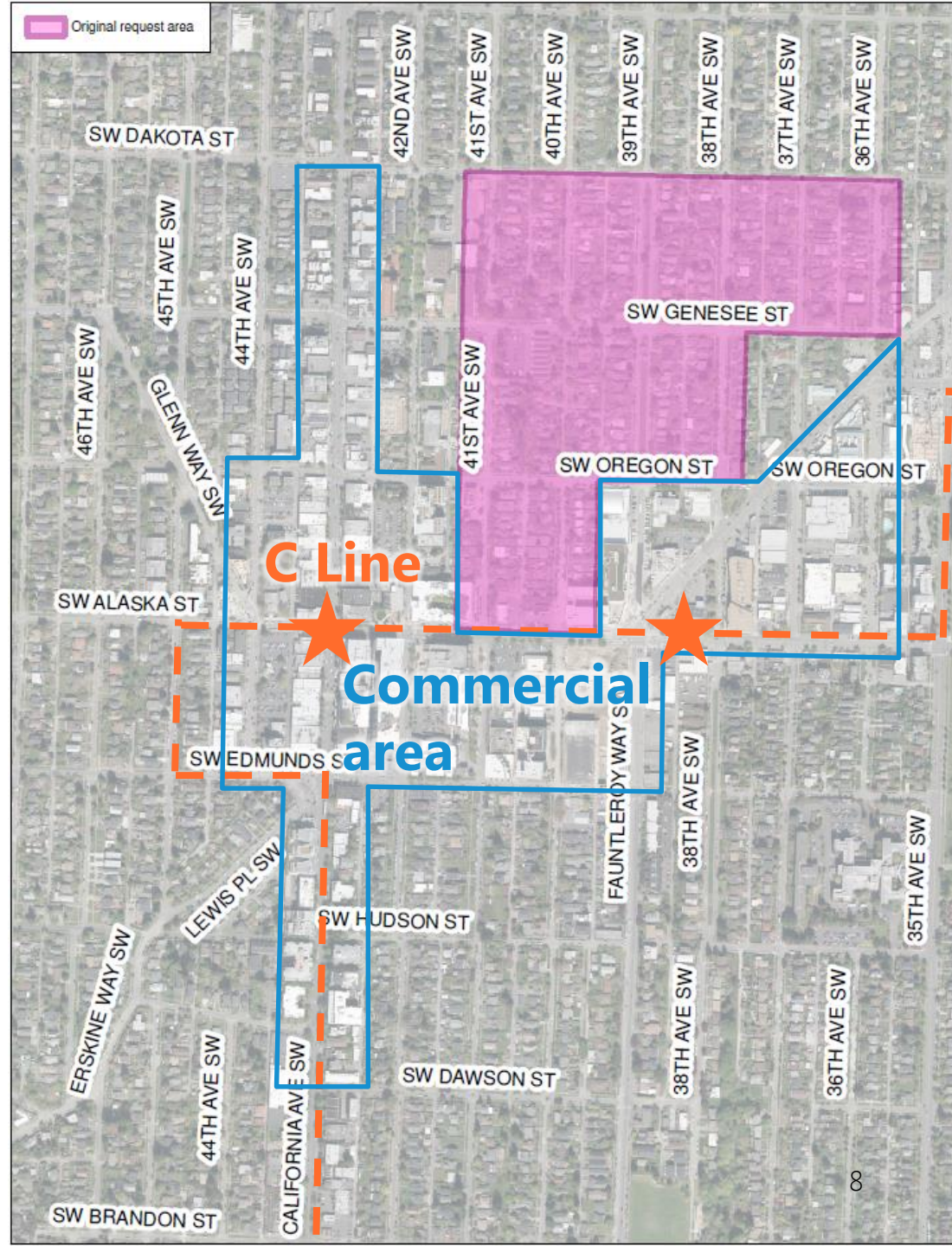
# New RPZ request process

1. Initial request from community
2. Determination
3. Detailed Occupancy study
4. Community outreach



# RPZ request

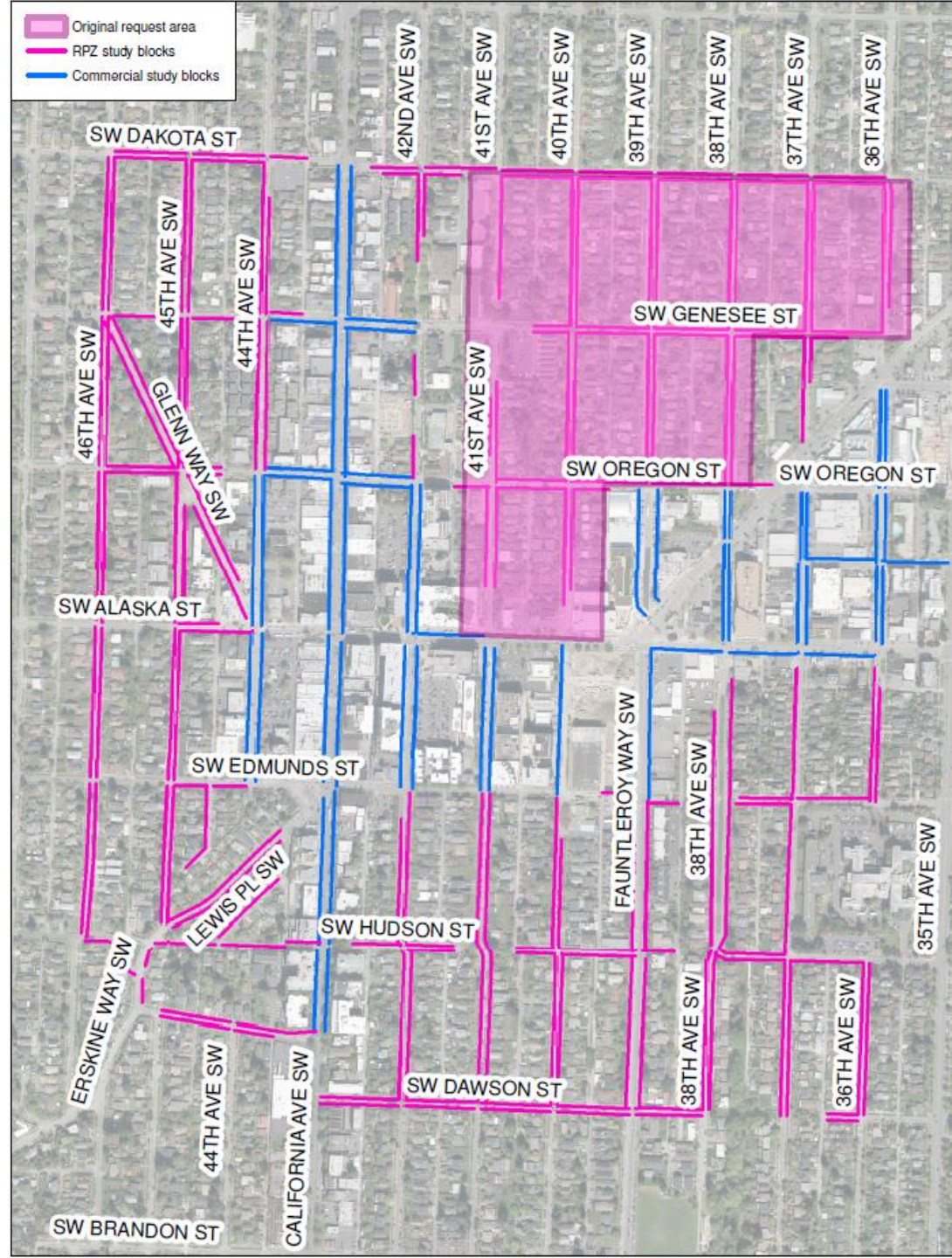
- West Seattle Junction Neighborhood Association
- January 2017





# RPZ request

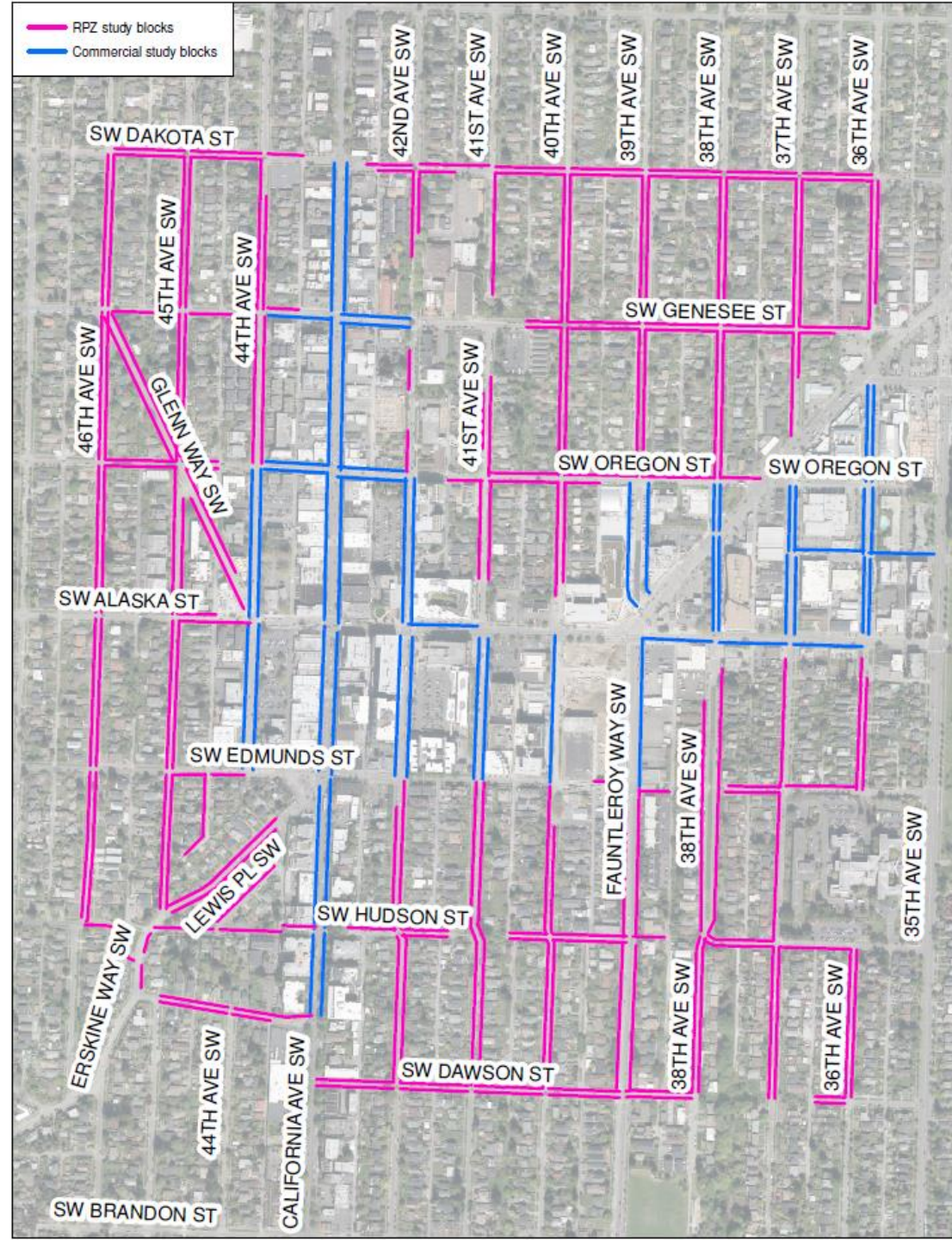
- RPZ and commercial studies
- Initial look in March 2017
- Occupancy and license plate study September 2017





# RPZ study

- Count on two days, a weekday and a Saturday
  - 4am, 10am, 2pm, 8pm
- 4 AM count to determine residents, non-residents
- Qualifying blocks
  - 75% or more full AND 35% or more non-resident
  - 20 contiguous blockfaces

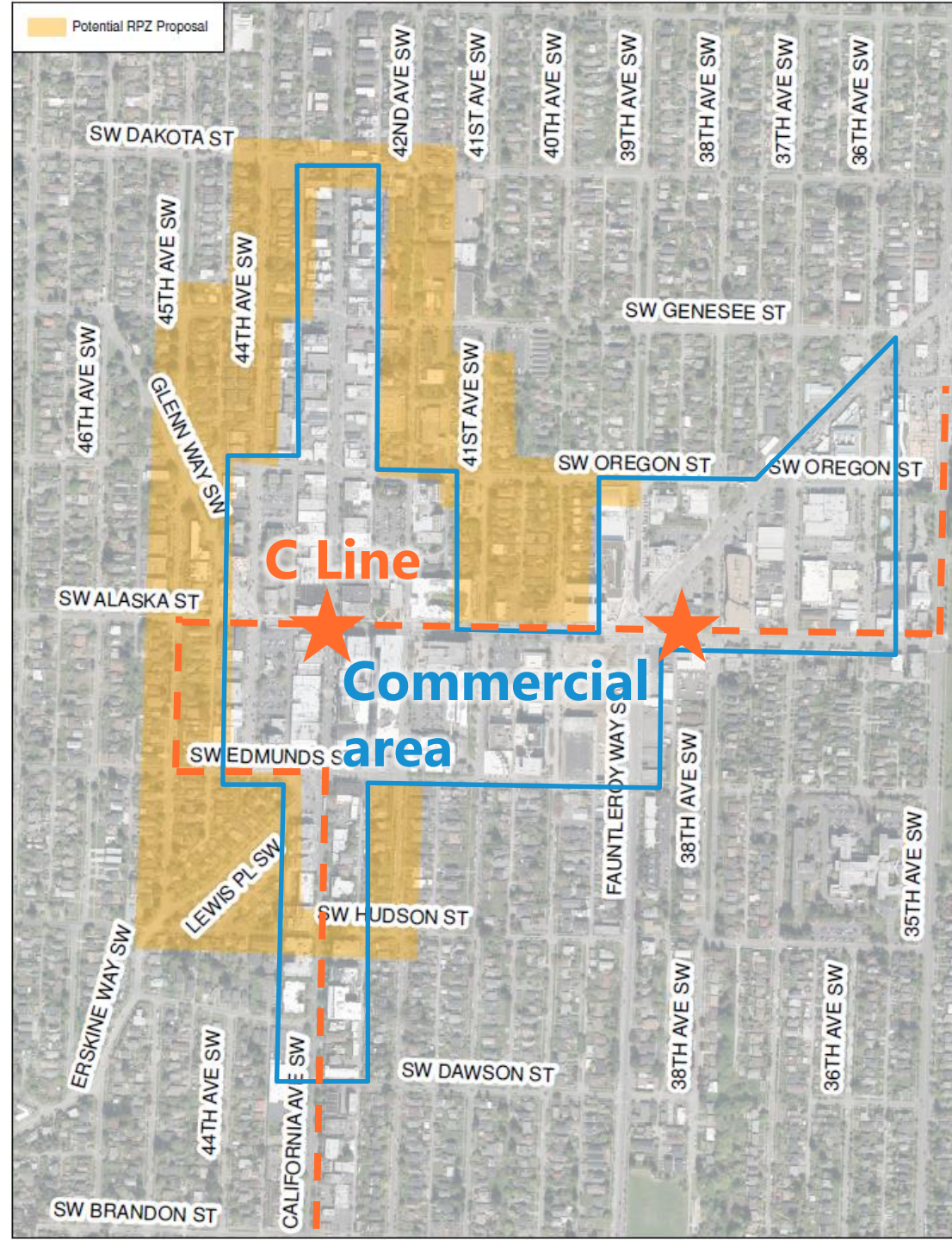


# RPZ Study Results



# RPZ could look like...

- This area around California Ave met criteria for new RPZ
  - 75%+ occupancy
  - 35%+ non-resident
  - 20+ contiguous blockfaces
- Other parts of study area did not meet all criteria



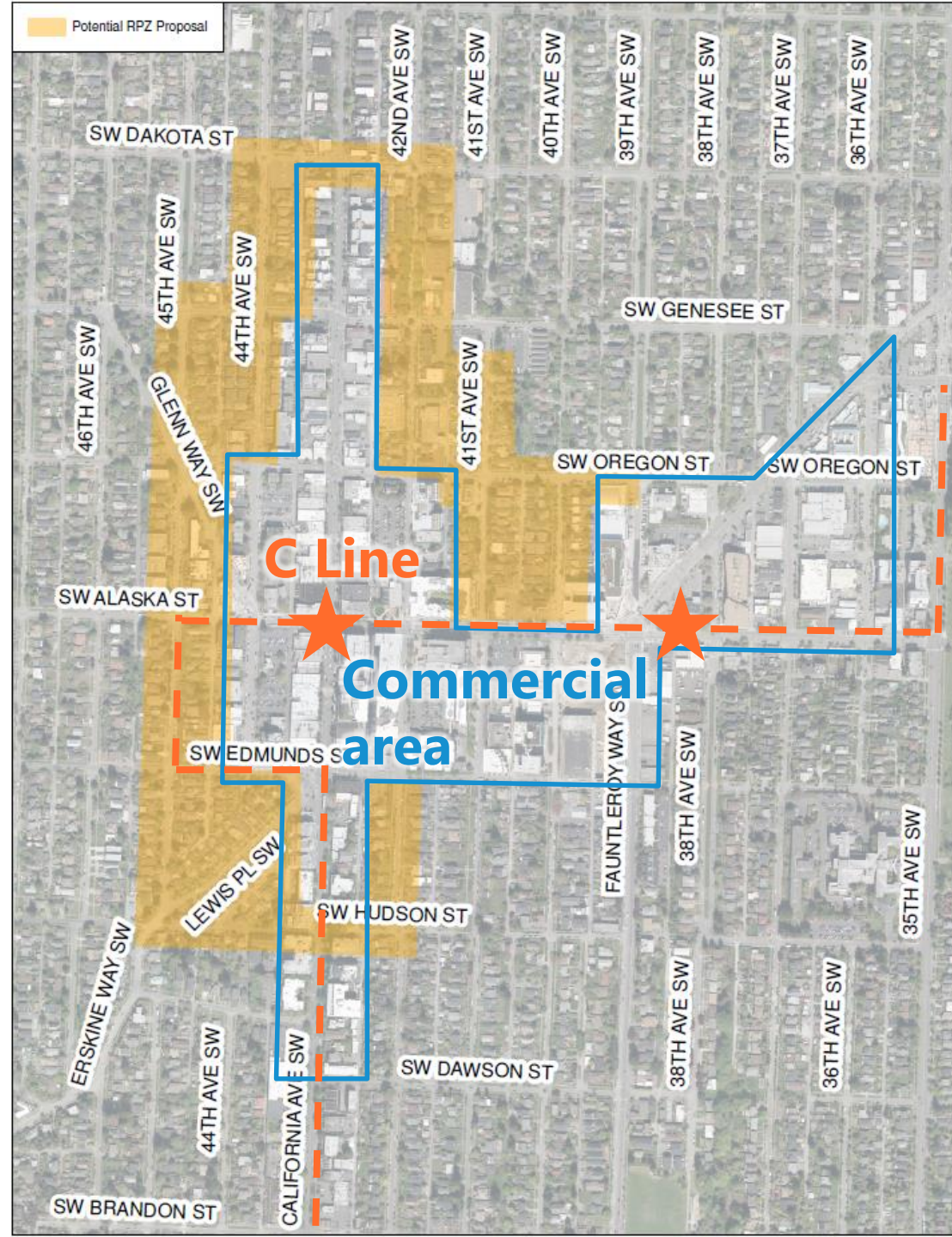






# RPZ could look like...

- Items **not** under consideration:
  - Late evening RPZ restrictions
  - No parking except by permit



# Occupancy around California Ave SW

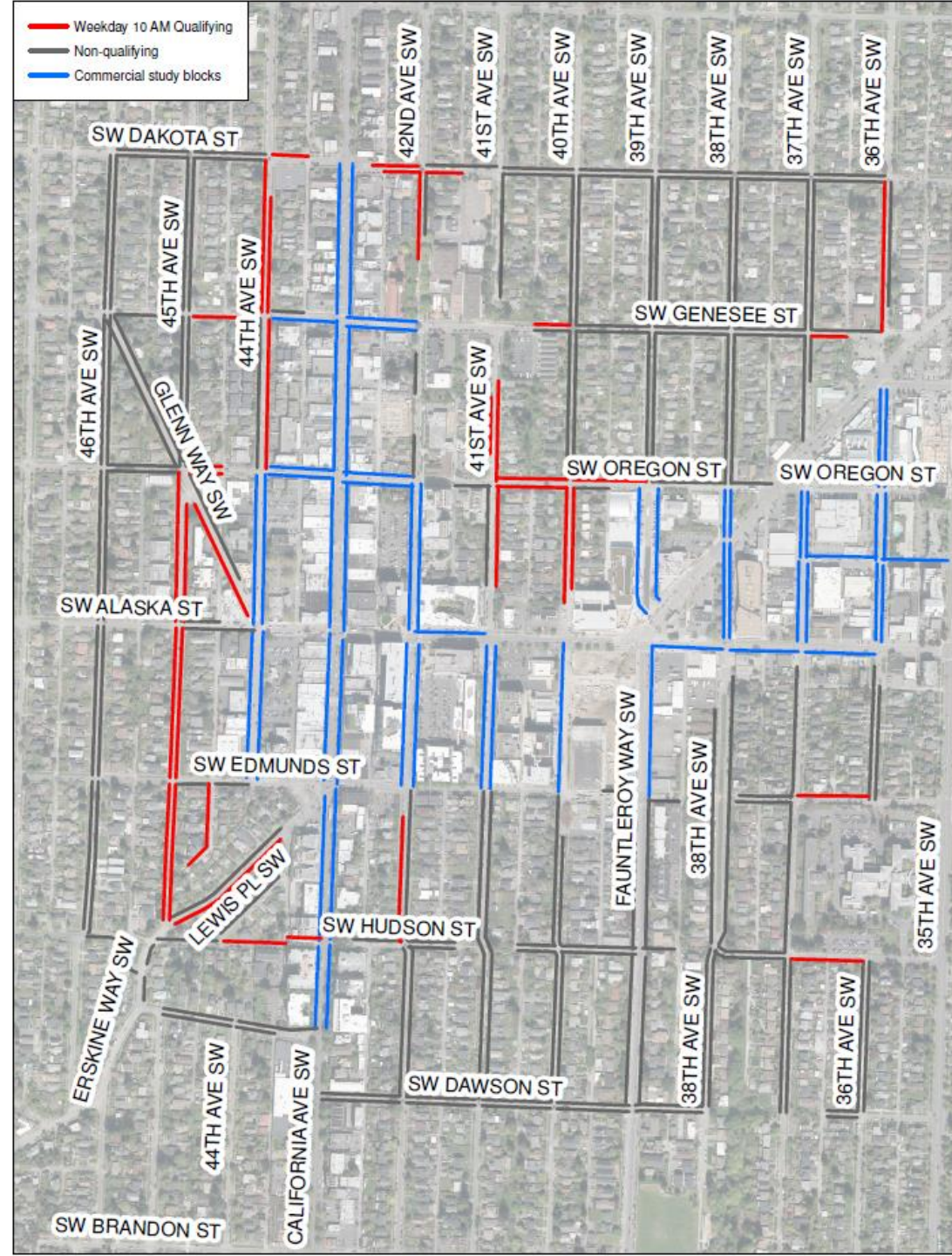
- Most full (and full of non-residents) weekday at 10 AM and 2 PM

	4am	10am		2pm		8pm	
	Occ.	Occ.	Non-res.	Occ.	Non-res.	Occ.	Non-res.
Weekday	64%	88%	58%	80%	61%	67%	40%
Saturday	69%	79%	33%	76%	43%	69%	38%



# RPZ Qualifying Blocks

- Times that were most full (and full of non-residents)
  - Weekday 10 AM and 2 PM
- Blocks that were most full (and full of non-residents):
  - Directly west and east of California Ave
  - 41<sup>st</sup> and 40<sup>th</sup>, north of Alaska



# Occupancy of entire residential study area

- Stayed in the 50% range
- More non-residents parking during weekday

	4am	10am		2pm		8pm	
	Occ.	Occ.	Non-res.	Occ.	Non-res.	Occ.	Non-res.
Weekday	51%	54%	46%	53%	49%	53%	32%
Saturday	54%	53%	24%	52%	31%	52%	28%

# Next steps

Date	Activity/action
February – April 2018	Share commercial and RPZ study results with Merchant's Associate and with JuNO
Spring – Summer 2018	Outreach around RPZ study results with broader community
Fall 2018	Propose commercial area parking changes, potential RPZ proposal

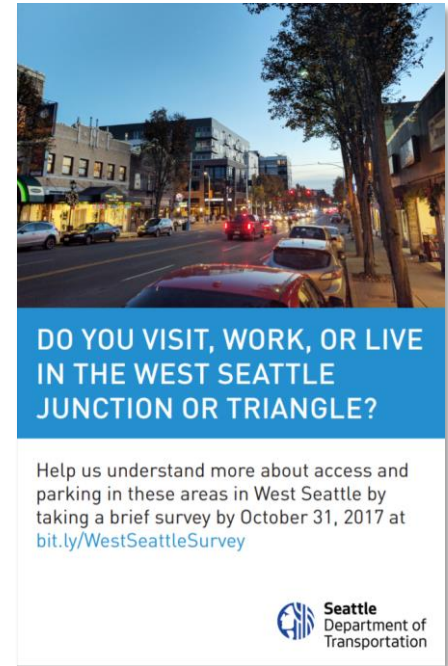


# RPZ Questions and Discussion

# Other West Seattle Studies

# Data collection completed Fall 2017

- Online survey (903 responses)
- In-person access intercept survey (490 surveys)



- **Weekday on-street commercial area** occupancy and duration parking study (53 blockfaces / 700 parking spaces)
- **Weekday and weekend publicly-available off-street parking** study (265 free spaces and 312 paid spaces)
- **Weekday and weekend on-street residential area** occupancy and duration study (171 blockfaces / 2,700 spaces)

# Parking study summary results

- In commercial area, parking readily available before about 5 PM. Occupancy peaks 6-7 PM.
- In larger residential area, occupancy hovers around 50% with some higher blocks closest to Junction
- Public paid off-street parking peaks at around 50% utilized
- Junction lots approach full in evenings

# Potential outcomes / proposal elements

- Potential RPZ proposal
- Add time limits to commercial streets close to Junction
- Extend unpaid time limits from 6 PM to 8 PM on/around California Ave SW
- Review/add load zones and at least one designated disabled space



# Questions?

Westseattleparking@seattle.gov | (206)733-9026

[www.seattle.gov/transportation/WSParking](http://www.seattle.gov/transportation/WSParking)

[www.seattle.gov/transportation](http://www.seattle.gov/transportation)

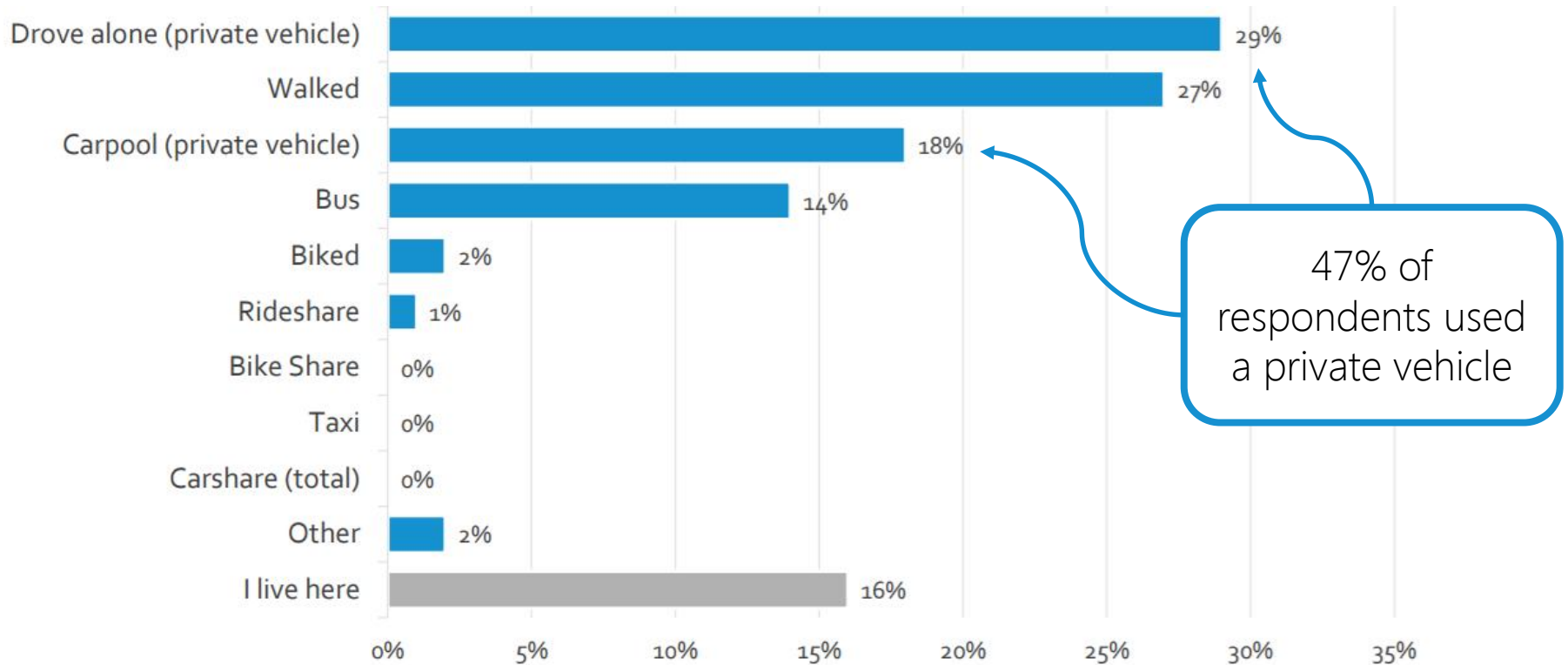


**Seattle**  
Department of  
Transportation

# Appendix 1: Other Parking and Access Studies

# Intercept Survey – overall mode split, all respondents

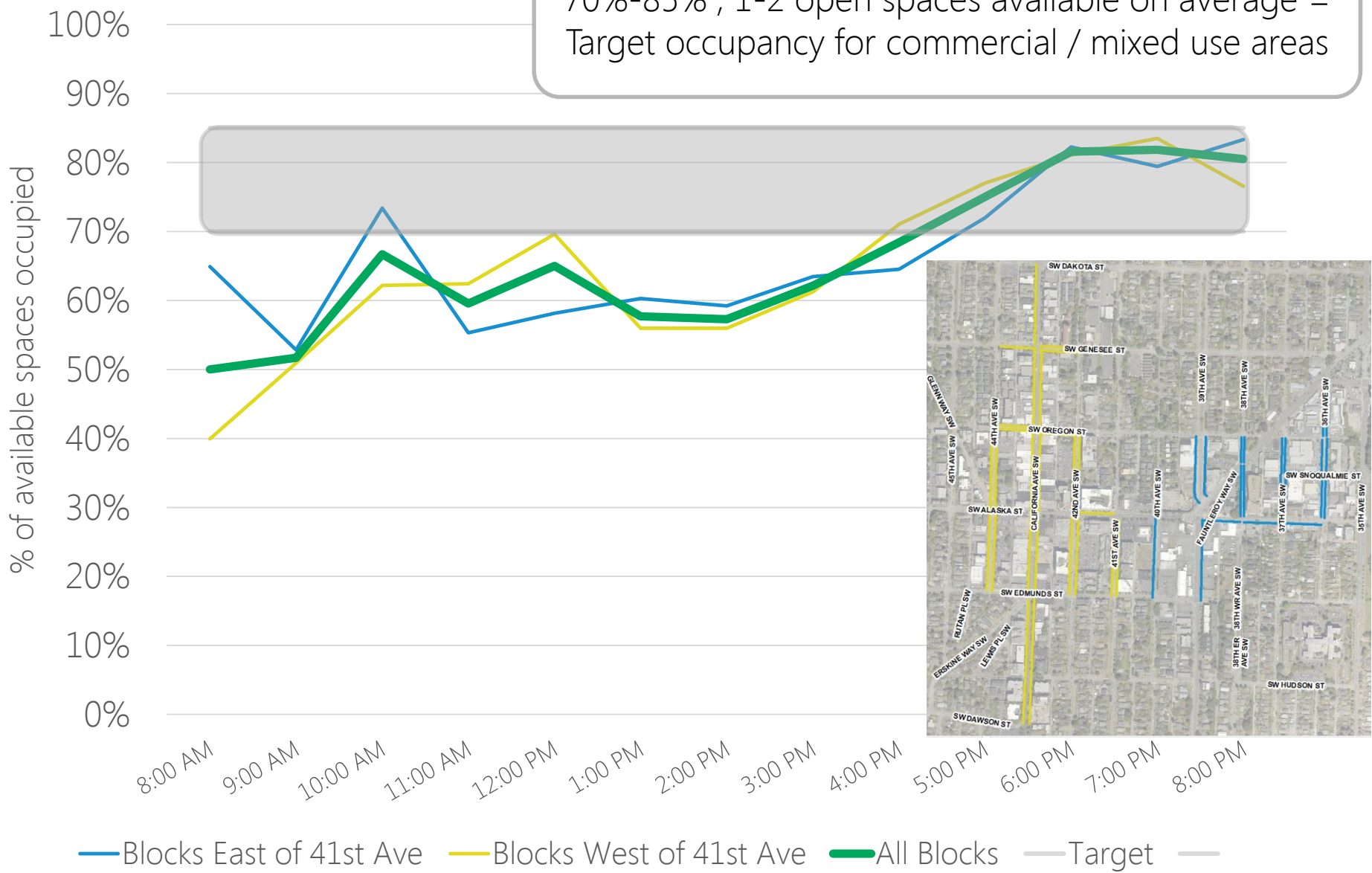
*How did you get to the West Seattle Junction today? (N = 490)*



Q6: How did you travel to the area? Multiple response: may sum to > 100%  
Base: All respondents (n=490)

# Weekday On-Street Parking Occupancy – Commercial areas

70%-85% , 1-2 open spaces available on average = Target occupancy for commercial / mixed use areas



# Weekday On-Street Parking Duration – Commercial areas

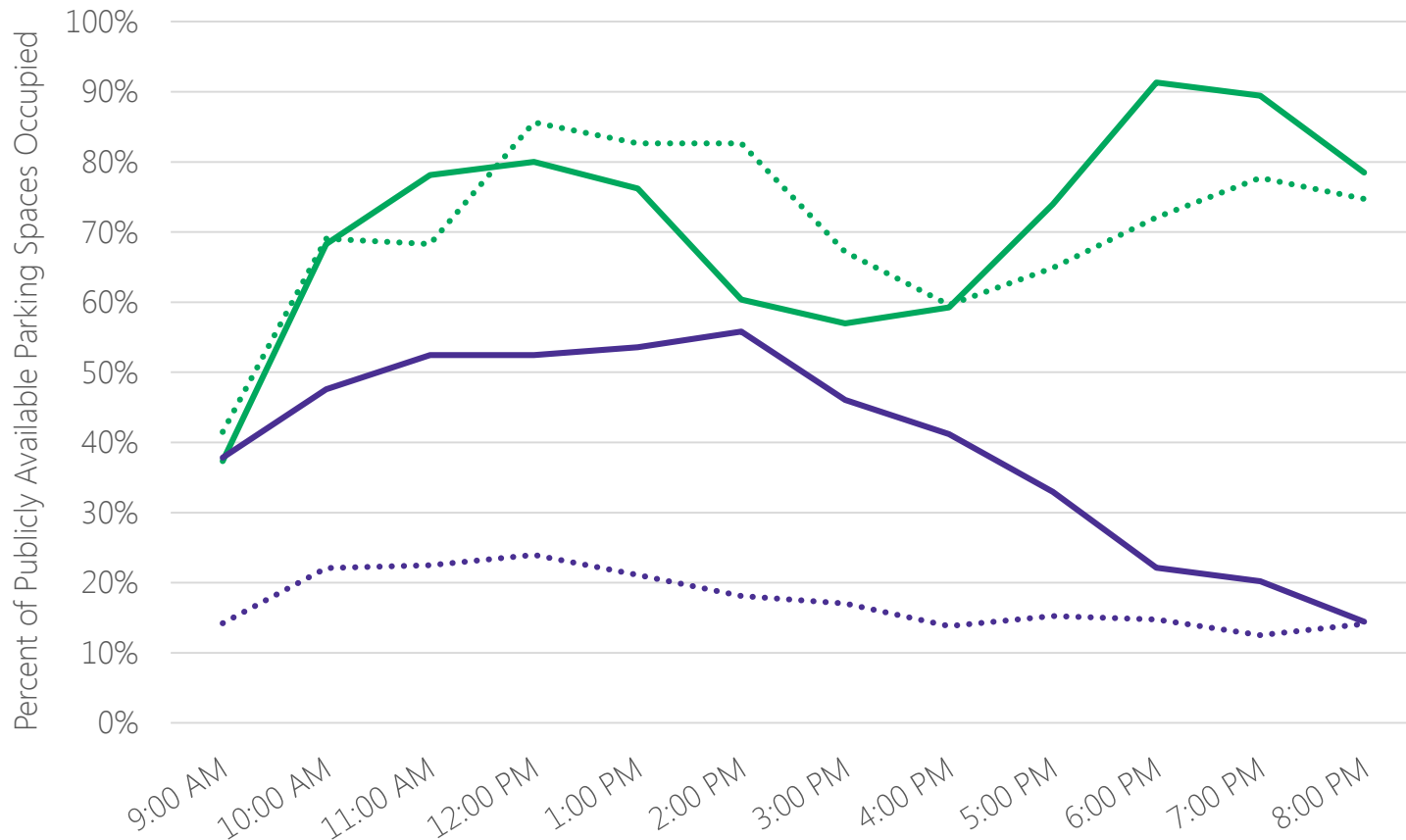
-Counted 3,271 vehicles in 706 spaces

-Almost 60% of vehicles parked under 1 hour, 80% under 2 hours

Parking space type	Vehicle type	N (cars)	Avg Duration (hours)
Time Limited Parking Spaces	General	3,100	1.3
Unrestricted Parking (no time limits)	General	129	3.0
Multiple (TL and Unrestricted)	Disabled Permit	32	3.4
Multiple (TL and Unrestricted)	Free-floating carshare (car2go, ReachNow)	9	1.2
All spaces / all types	All	3,271	1.4

# Off-Street Parking Occupancy

West Seattle Off-Street Parking Occupancy



— Junction Free Lots - Wednesday

..... Junction Free Lots - Saturday

— Paid Parking Facilities - Wednesday

..... Paid Parking Facilities - Saturday

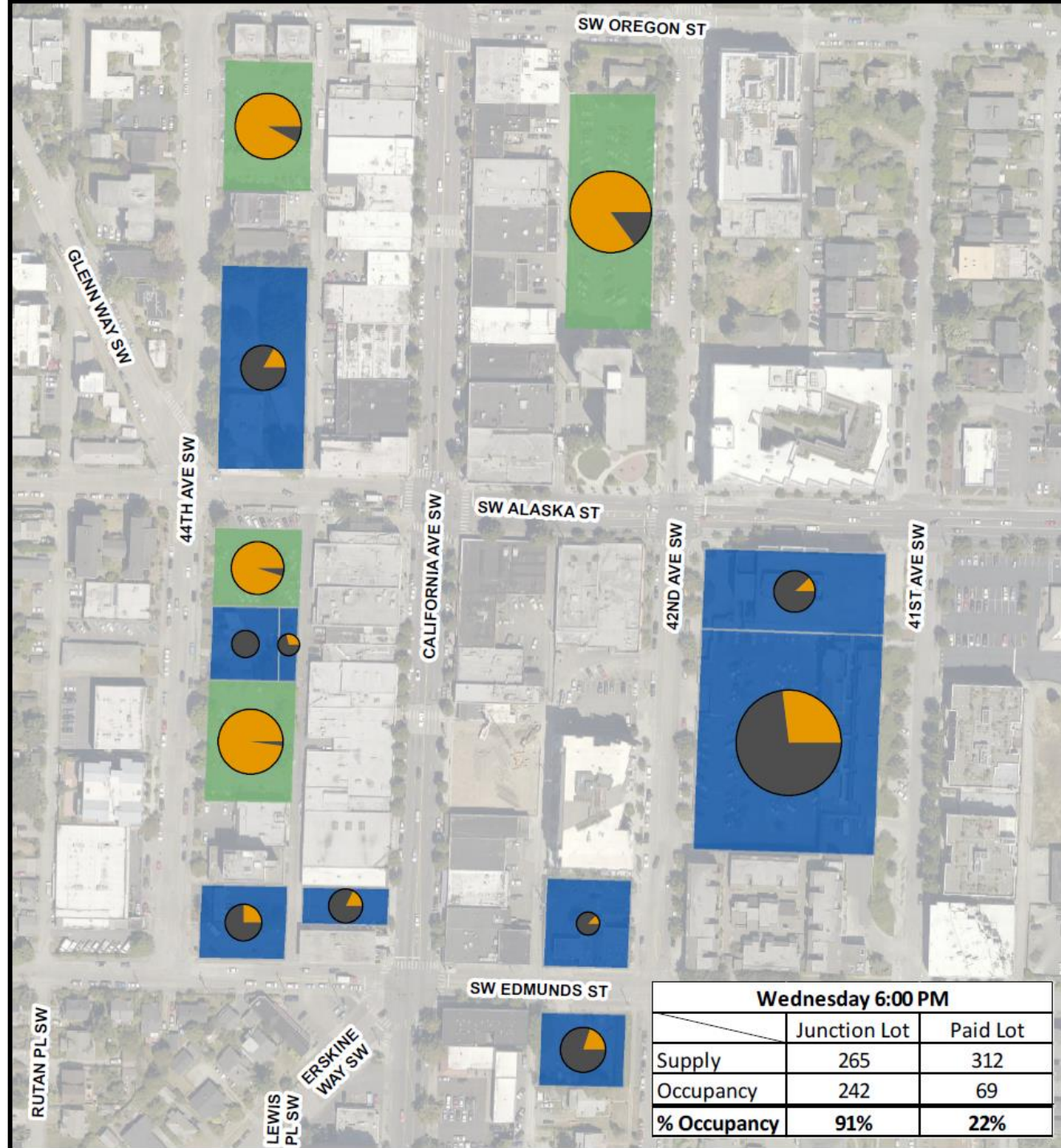


# Off-street detail, Wed 6 PM

Junction Parking Lot  
 Paid Parking Lot

Occupied Spaces  
 Unoccupied Spaces

Note: Data collected on 9/20/2017



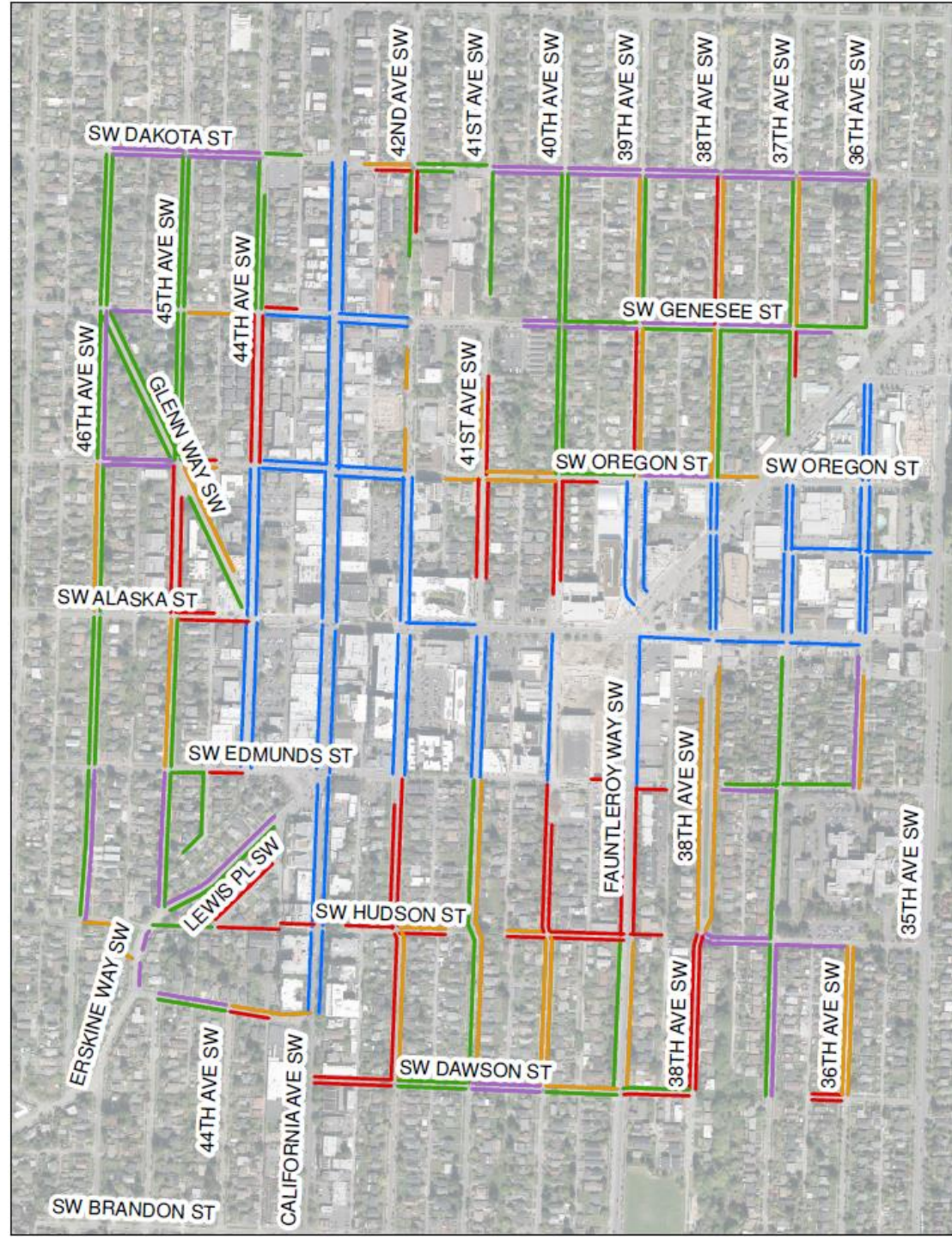
Wednesday 6:00 PM		
	Junction Lot	Paid Lot
Supply	265	312
Occupancy	242	69
<b>% Occupancy</b>	<b>91%</b>	<b>22%</b>

# Appendix 2 : Maps of RPZ Study Results






# Study results weekday occupancy 4 AM

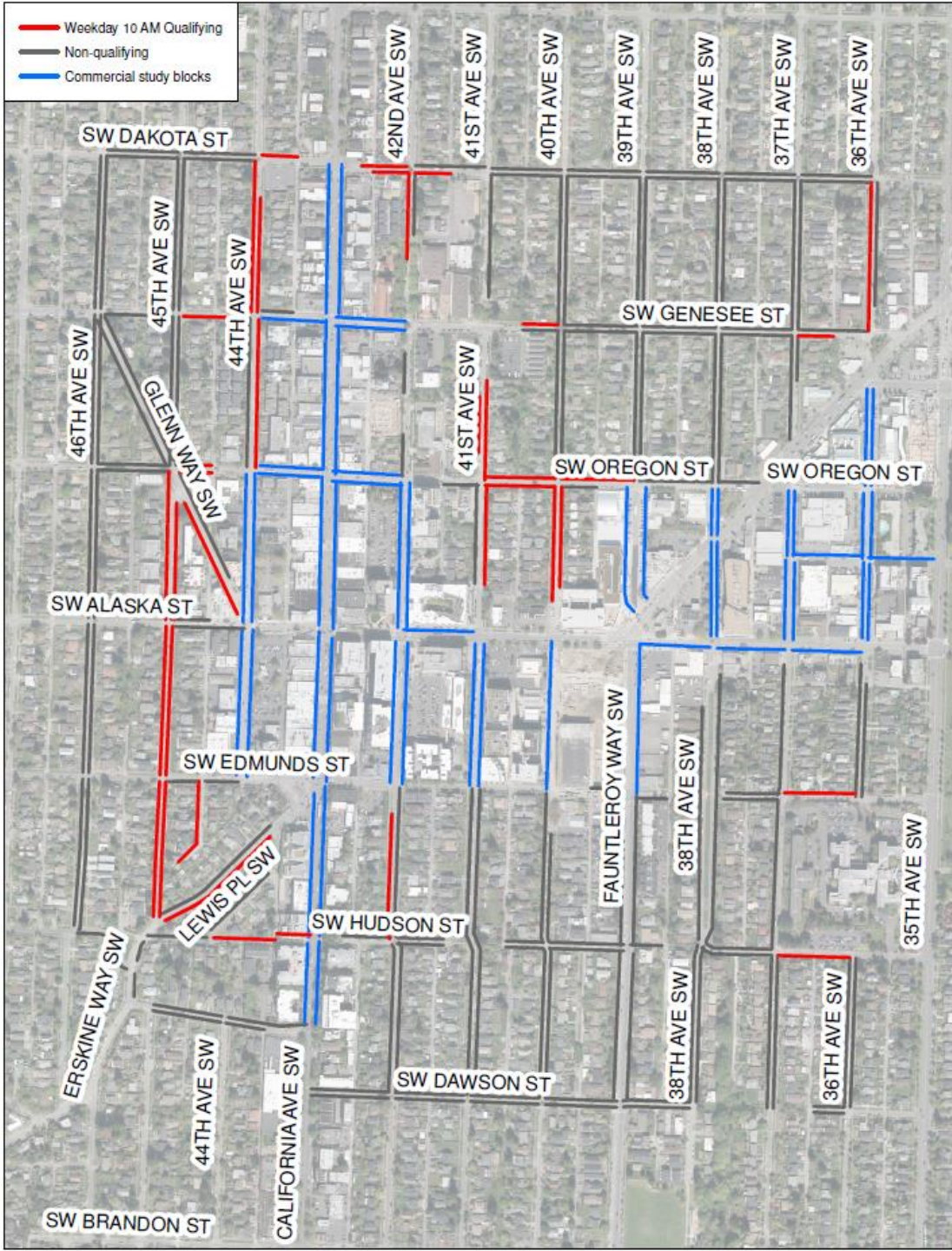
- 25% or less
- 26 – 50%
- 51 – 75%
- 75% or more
- Commercial study





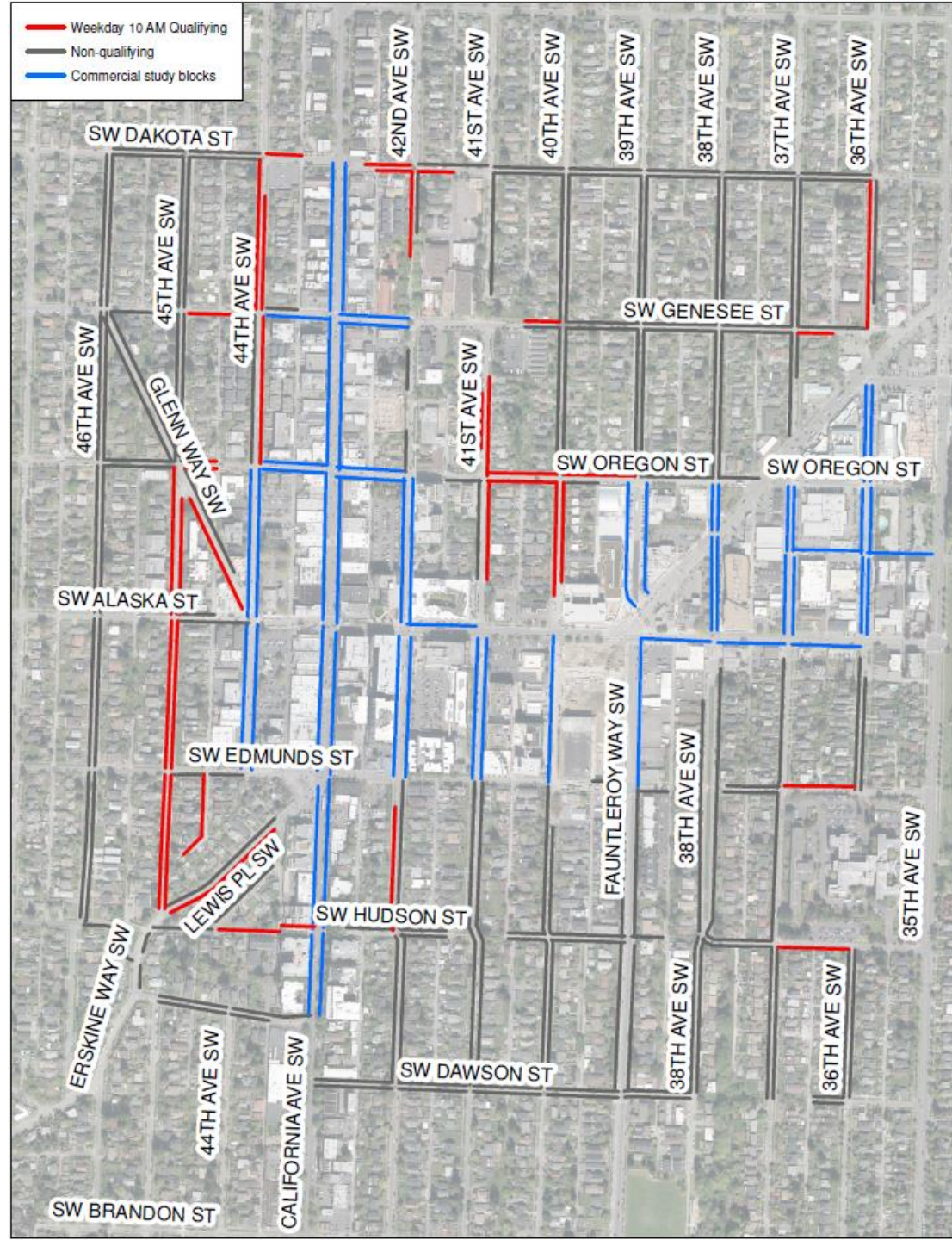
# How to read qualifying study result maps

-  Commercial study area blocks
-  RPZ study blocks that qualify for new RPZ
-  RPZ study blocks that do **not** qualify for new RPZ



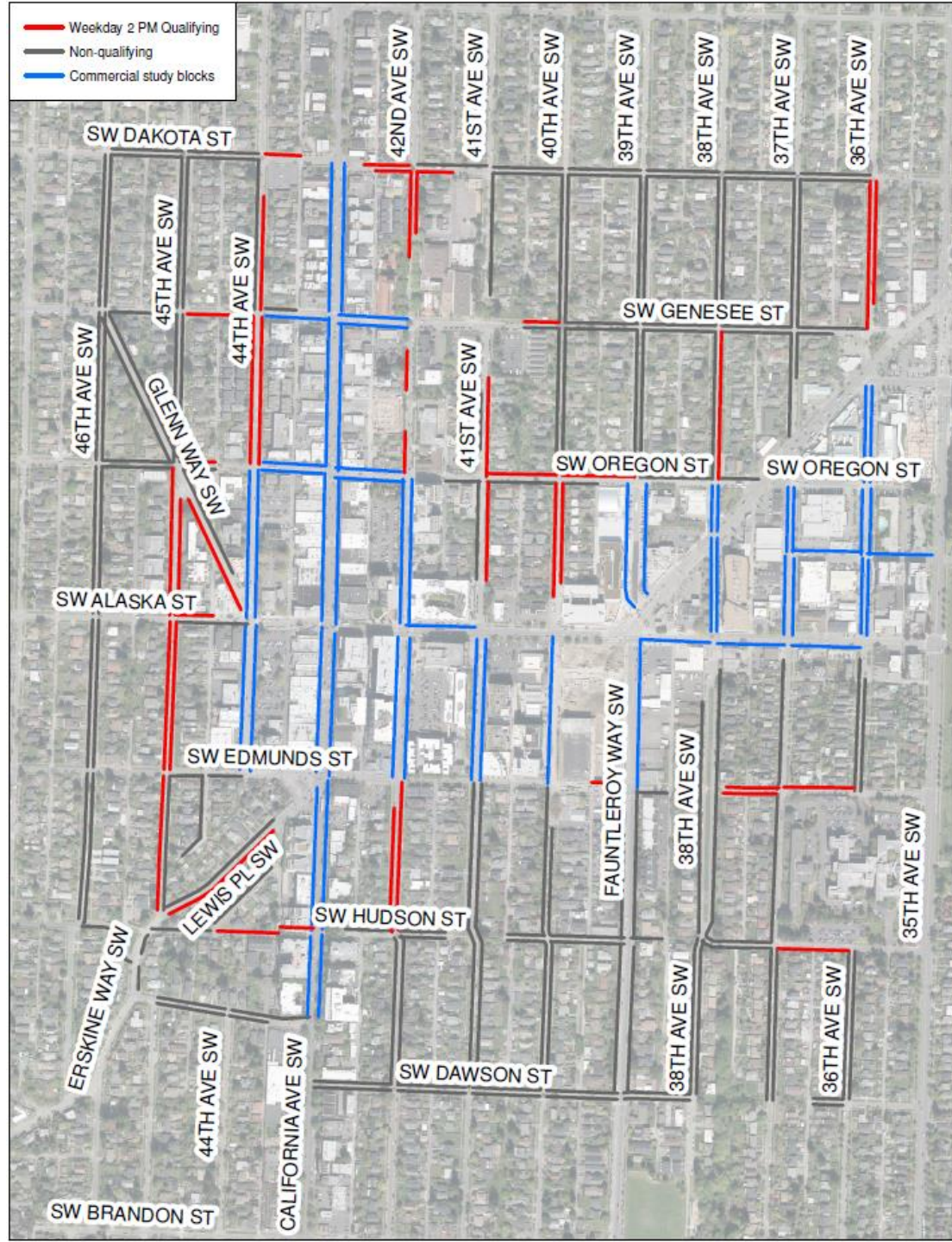


# Study results weekday qualifying 10 AM



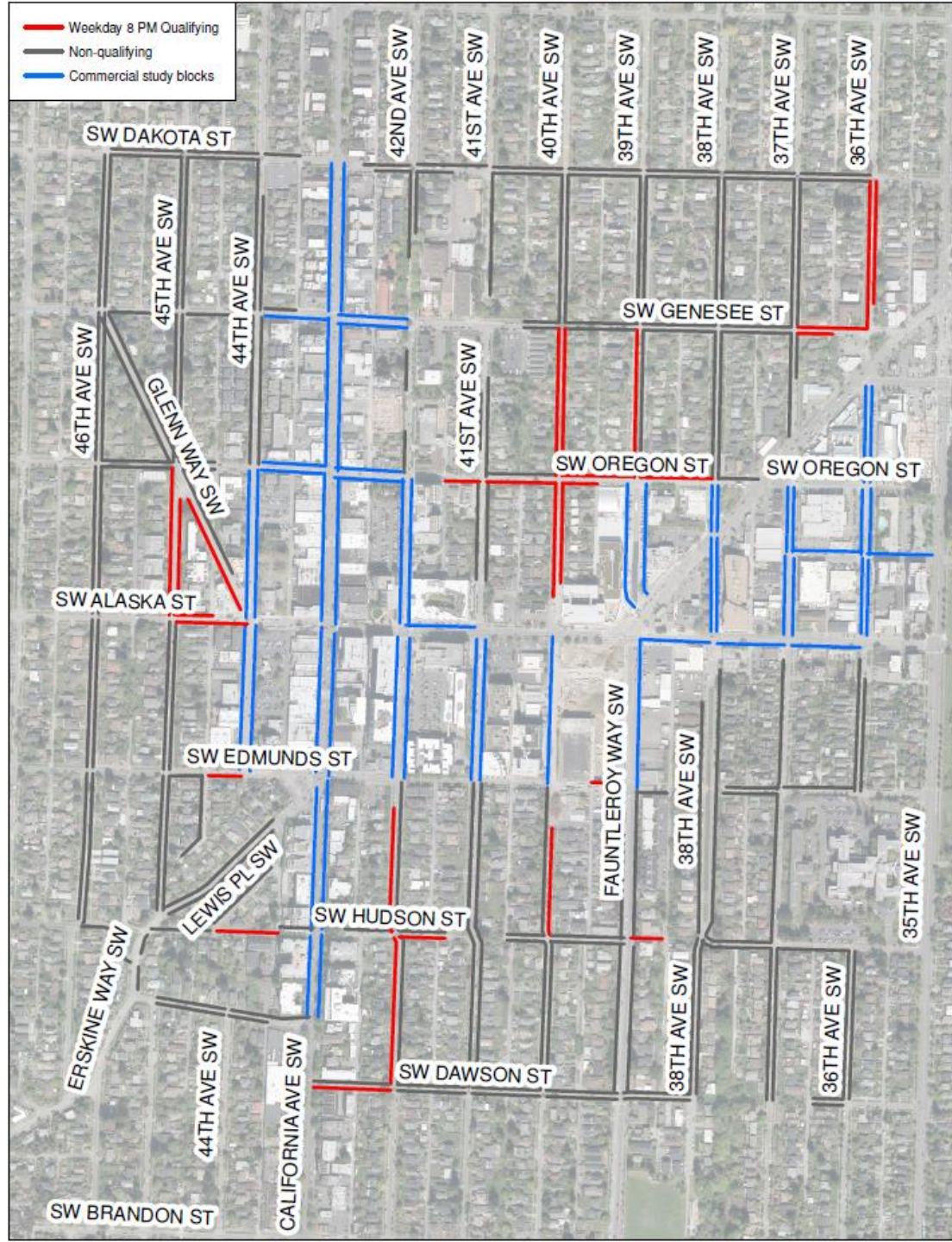


# Study results weekday qualifying 2 PM





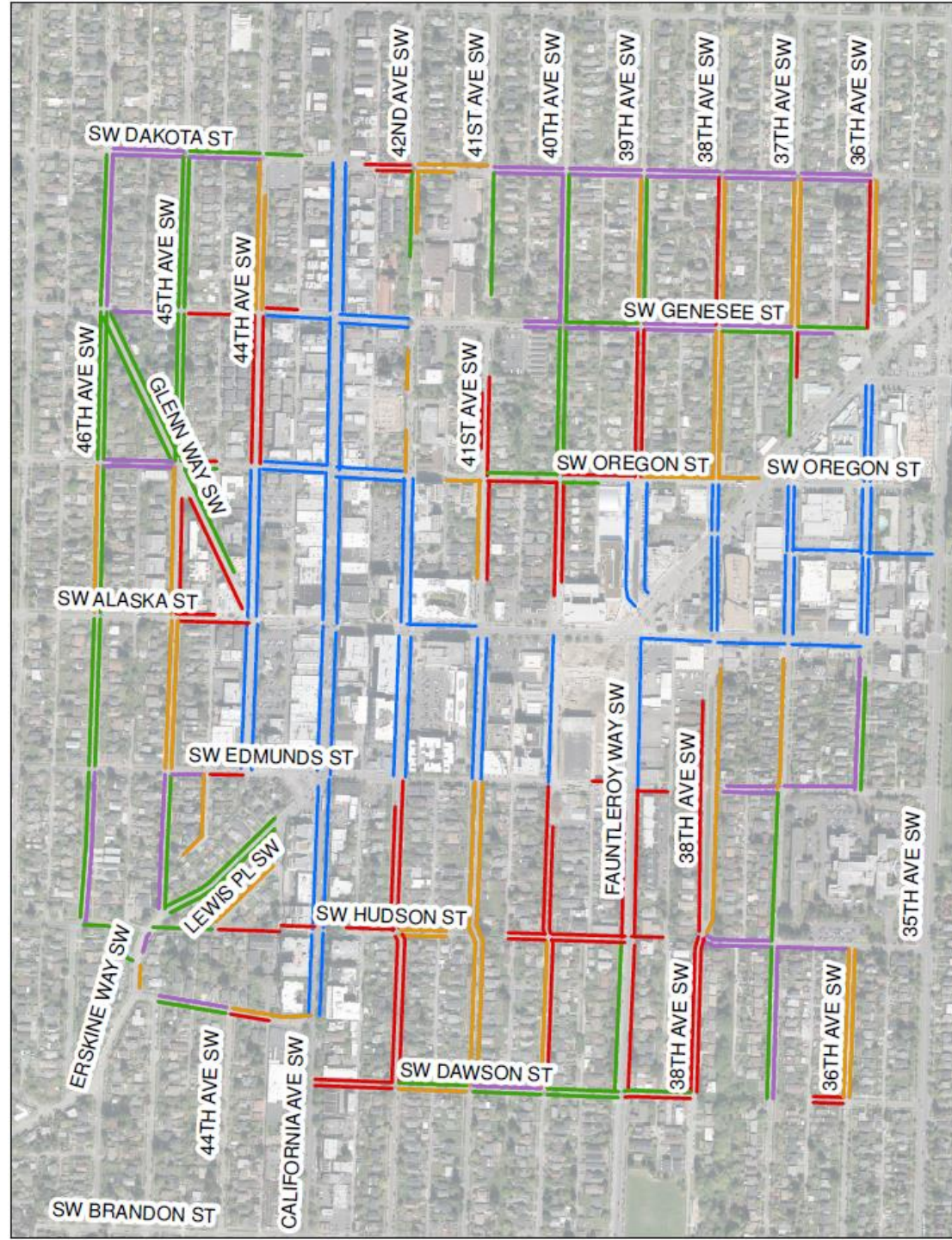
# Study results weekday qualifying 8 PM





# Study results Saturday occupancy 4 AM

- 25% or less
- 26 – 50%
- 51 – 75%
- 75% or more
- Commercial study

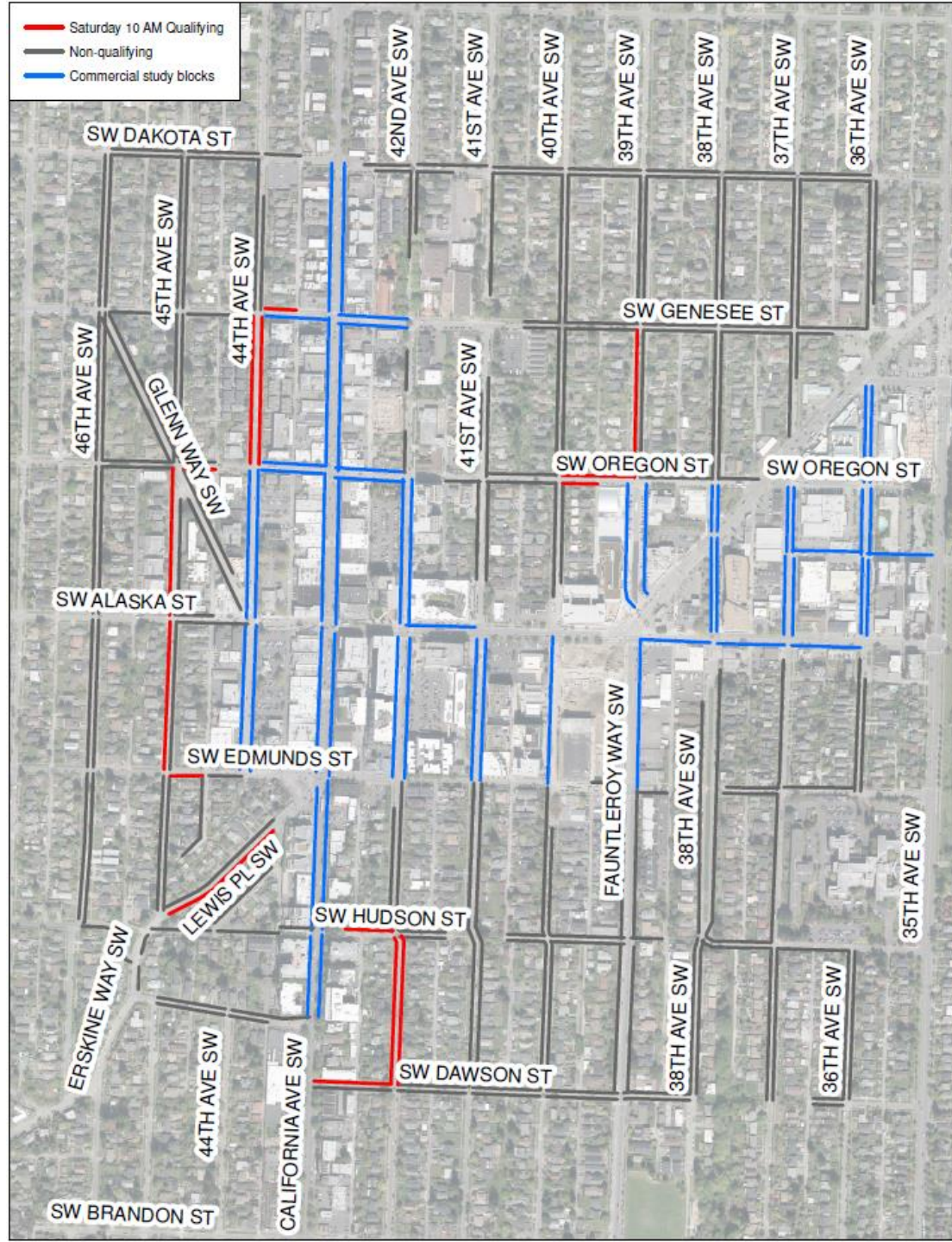




# Study results

## Saturday

### qualifying 10 AM

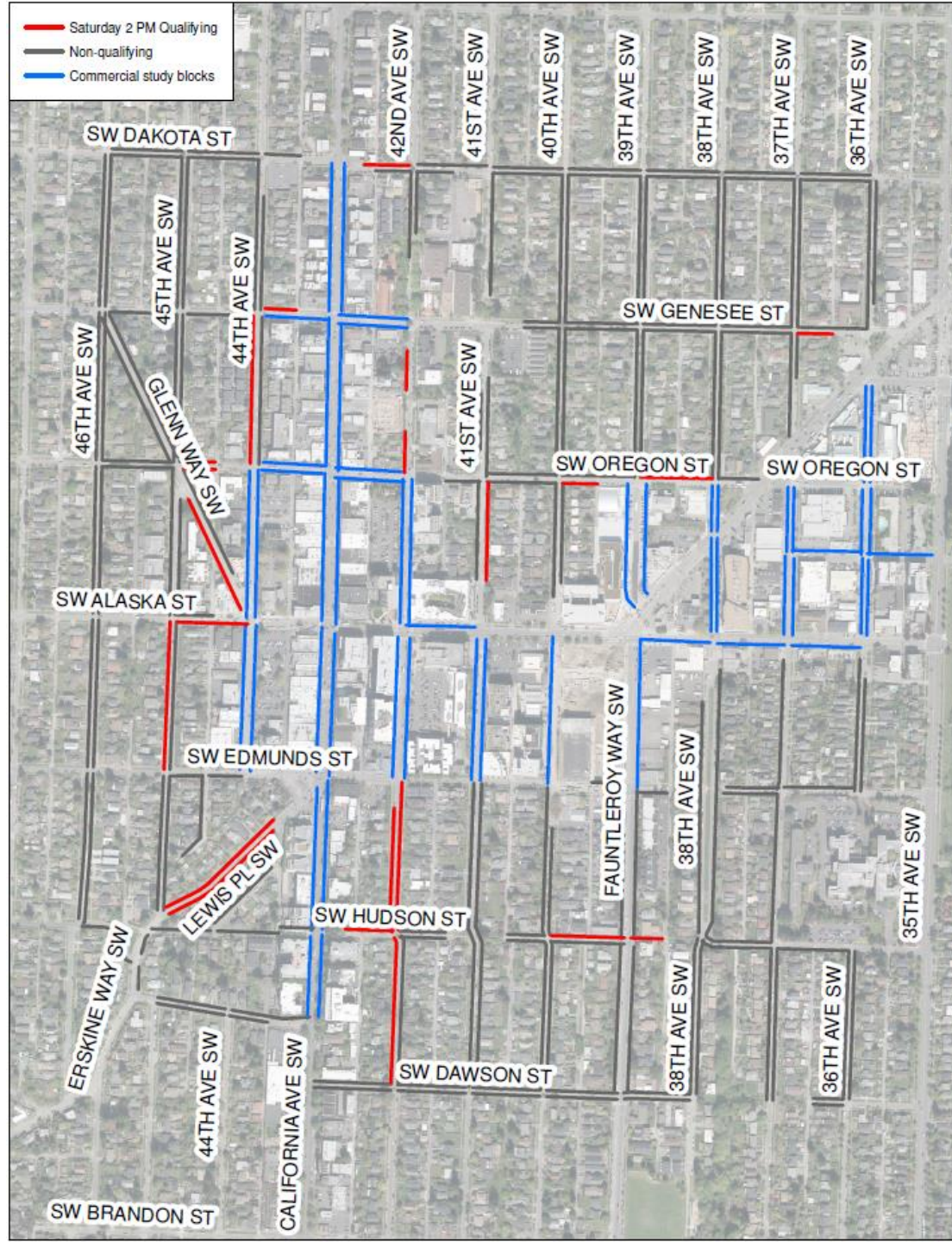




# Study results

## Saturday

### qualifying 2 PM

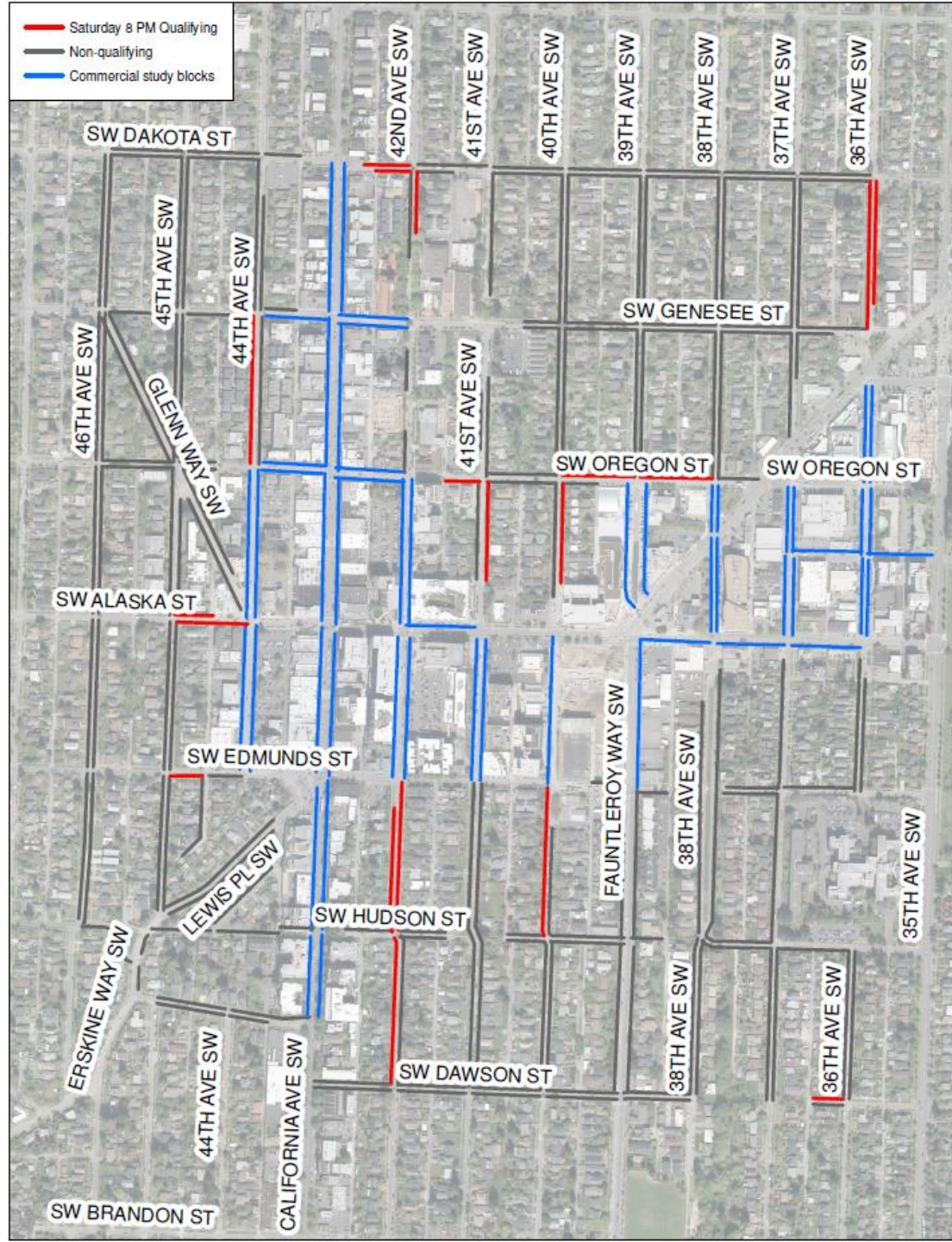




# Study results

## Saturday

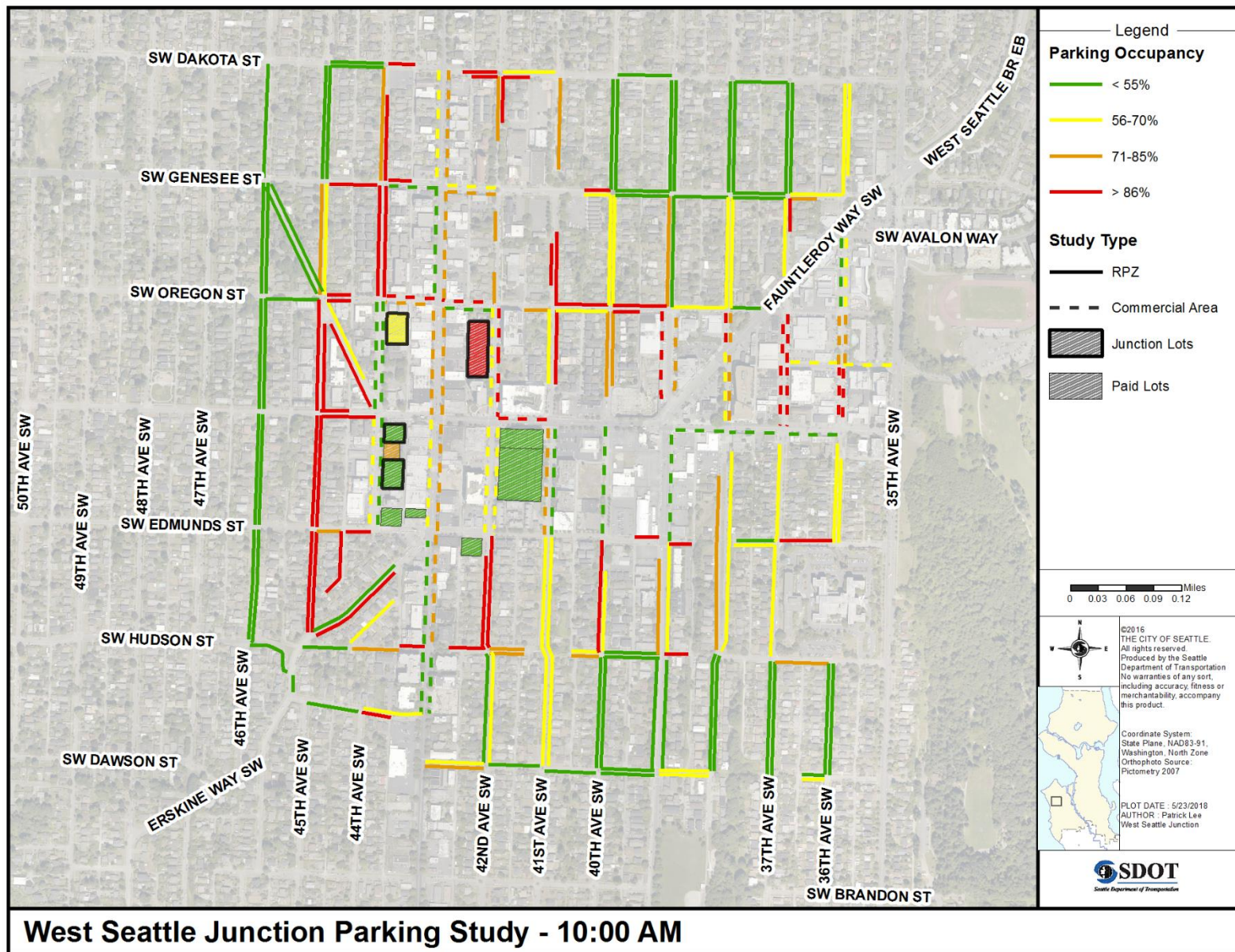
### qualifying 8 PM



# Appendix 3 : Overall Study Result Maps

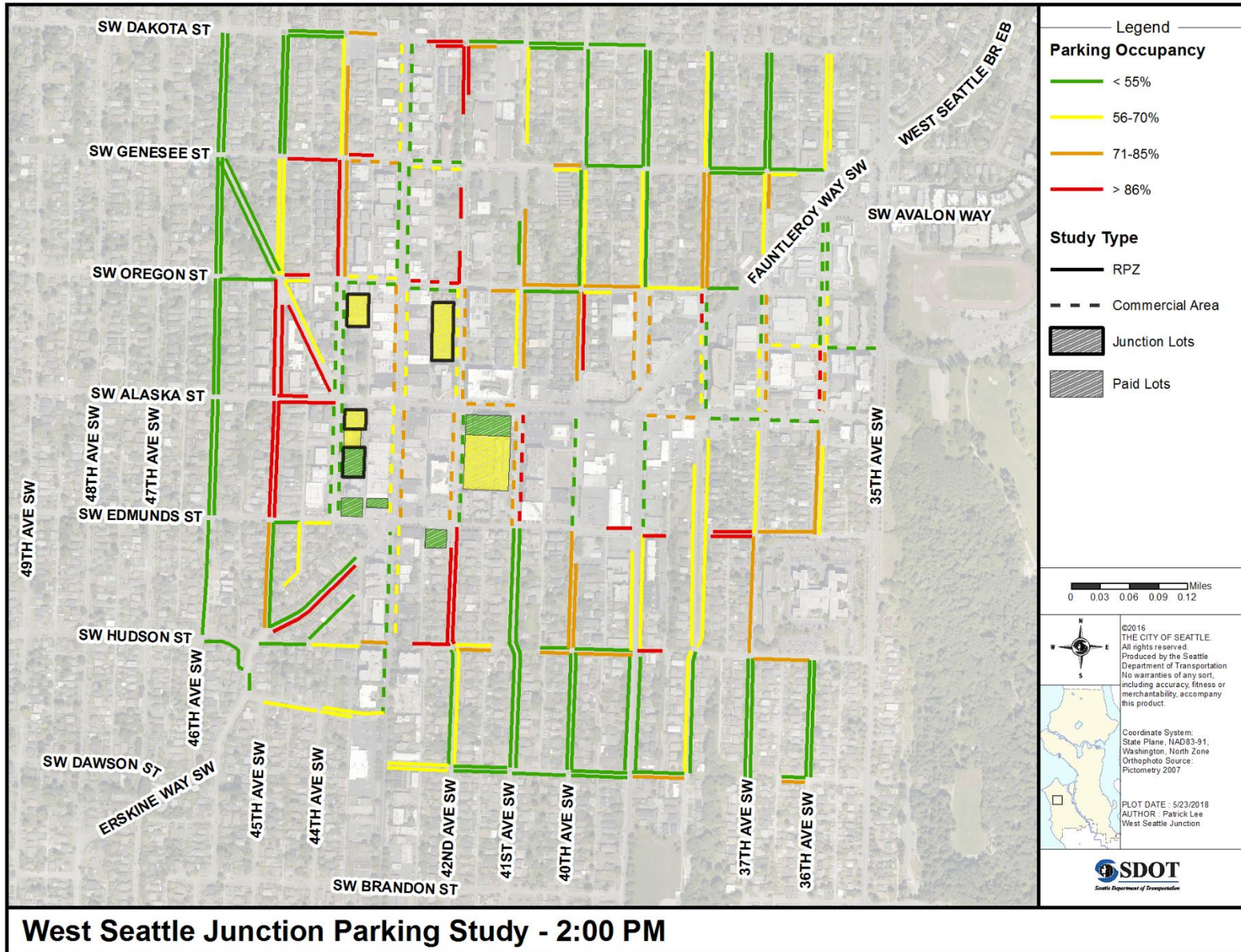


# Combined weekday 10 AM parking occupancies





# Combined weekday 2 PM parking occupancies



West Seattle Junction Parking Study - 2:00 PM



# Combined weekday 8 PM parking occupancies

