

Restricted Parking Zone 29 Expansion



Public Hearing
Jonathan Williams
July 10 2017



Seattle
Department of
Transportation

Our mission, vision, and core values

Mission: deliver a high-quality transportation system for Seattle

Vision: connected people, places, and products

Committed to **5 core values** to create a city that is:

- Safe
- Interconnected
- Affordable
- Vibrant
- Innovative

For **all**

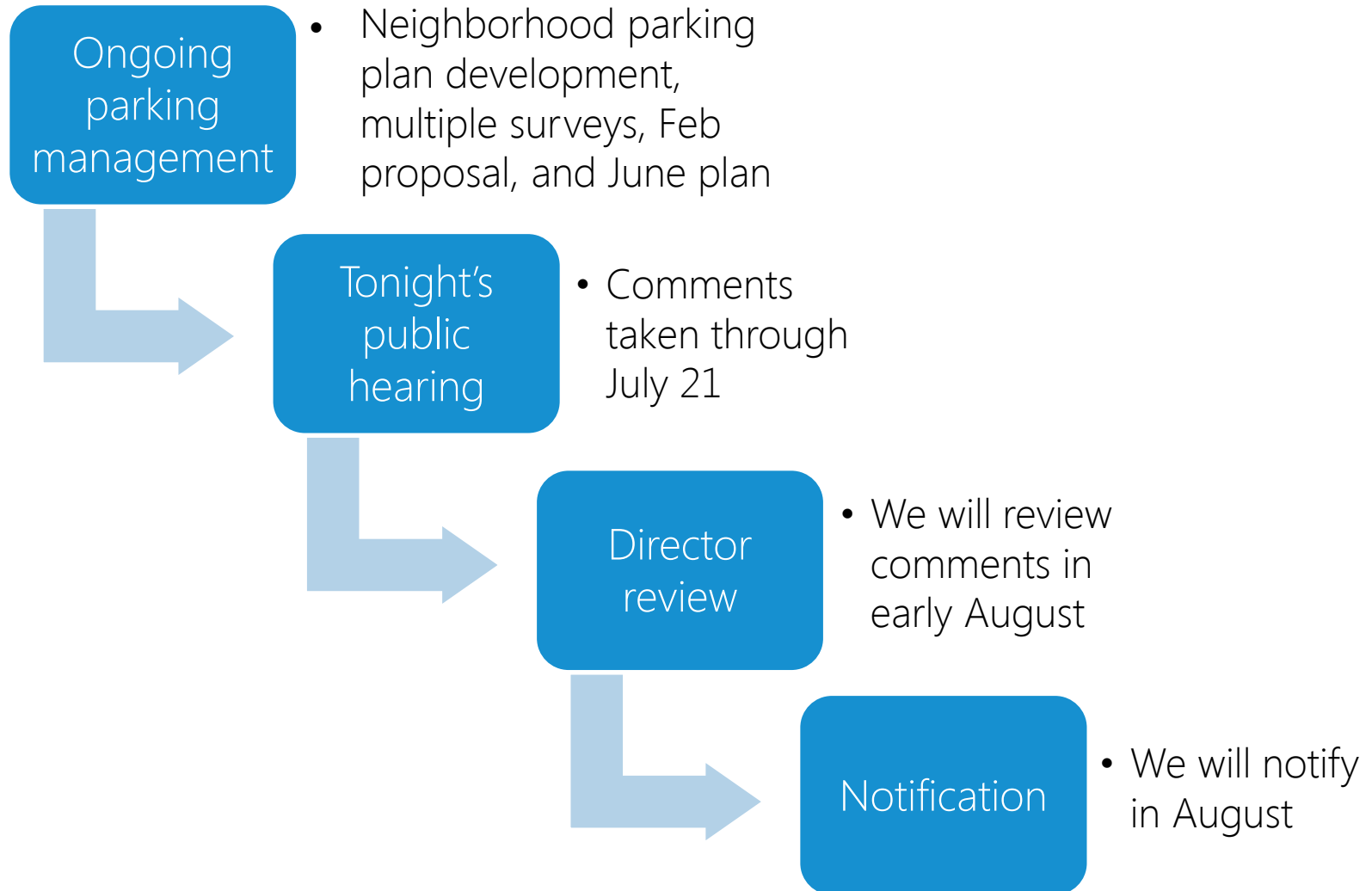
Tonight's agenda

- 6:00 PM: Welcome and Sign-in
- 6:05 PM: Brief SDOT presentation
- 6:20 PM: Public comment (2 minutes each)
- 7:00 PM: Questions
- 7:30 PM: Adjourn

Why have Restricted Parking Zones?

- Curbspace is a limited public resource
- Balance competing needs
- Support residential access
- In light rail areas, prevent “hide and ride” parking

RPZ public hearing process

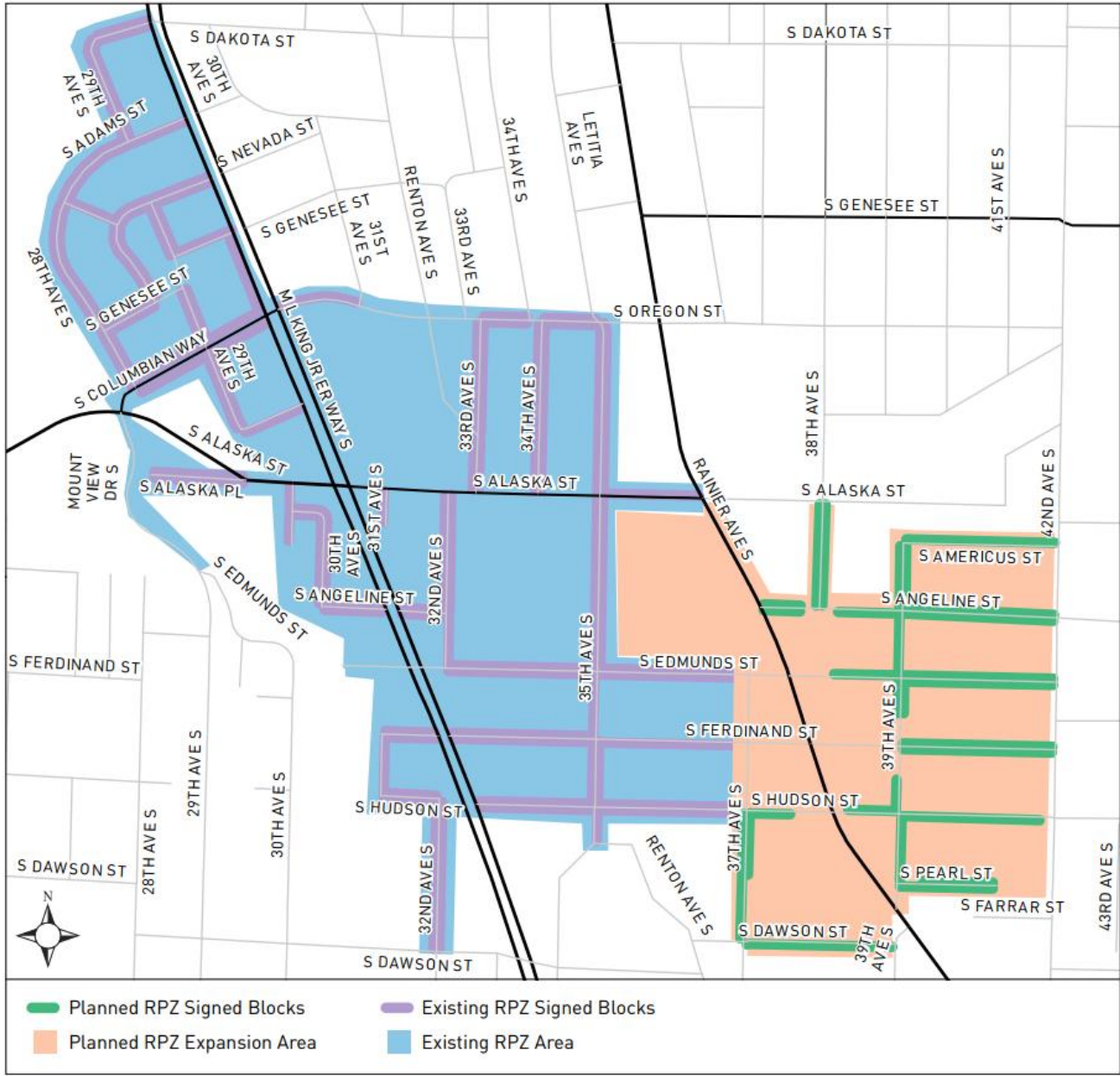


How Zone 29 works

- Curbspace is public
- Most vehicles subject to 2-hour time limit
- Permit holders exempted from time limit in RPZ areas
- 4 decal permits per residential household
- 1 guest permit per residential household
- Employees eligible for permits



RPZ 29 Expansion



February 2016 Open Questionnaire



DO YOU WORK, LIVE, OR PLAY IN COLUMBIA CITY?

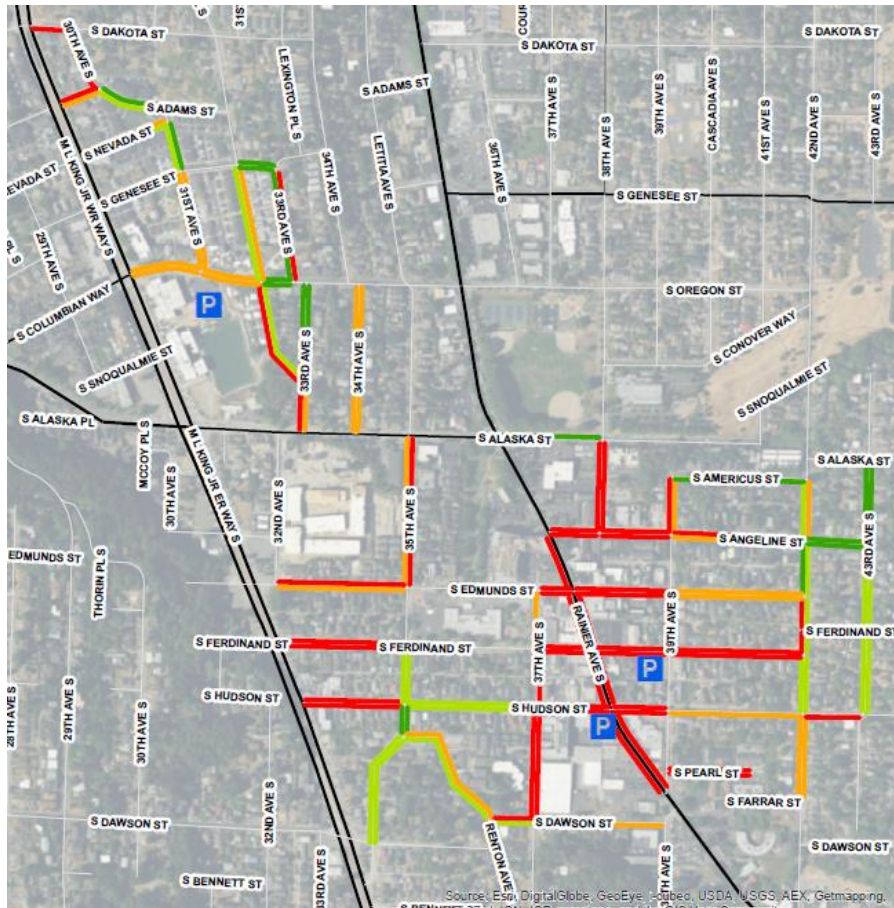
Help us understand more about parking and access in Columbia City by taking a brief survey by March 18, 2016 at:

www.surveymonkey.com/r/CCAccess



- 516 responses with 383 open-ended comments
- RPZ expansion request was most popular open-ended response

Residential Area Study



Secondary duration study east of Rainier on blocks >75% full:

- Occupancy ranged from 79% to 85% full
- Up to 50% of vehicles were non-residents who showed up during day

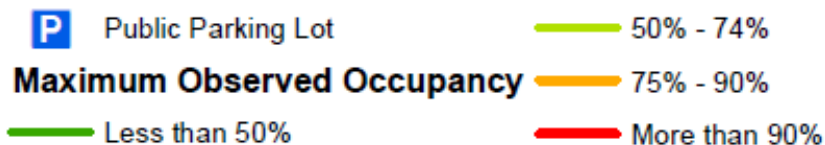


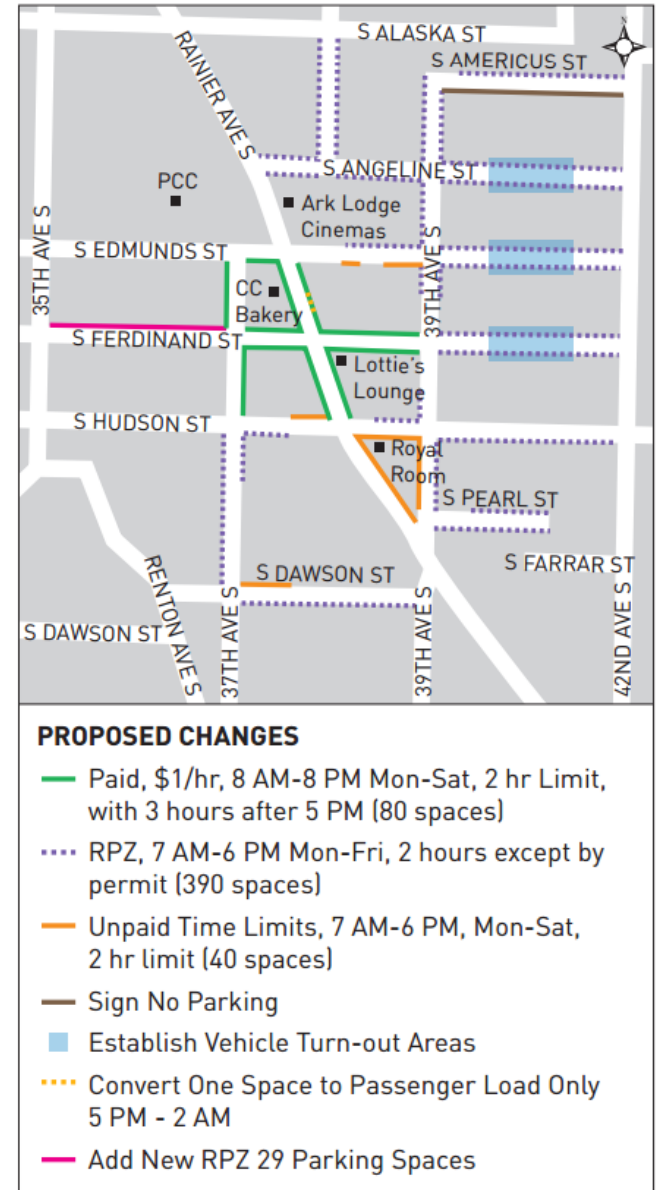
Fig 3 - Maximum Parking Occupancy, 9 AM to 7 PM

January 2017 Proposal



We want to hear from you about proposed parking changes in Columbia City. Complete an online survey at surveymonkey.com/r/SD0TCC by February 13, 2017.

515 responses on survey. Of those who provided yes or no comments on RPZ expansion, over 75% supported RPZ 29 expansion.



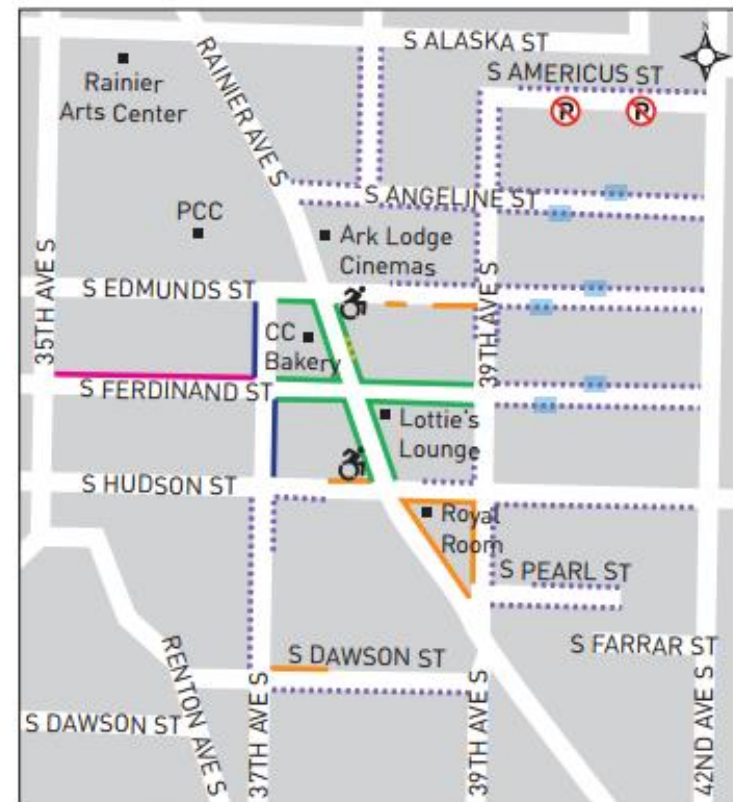
June 2017 Final Plan












Parking Changes Coming to Columbia City in Fall 2017

Public Hearing Notice:

SDOT will hold a Public Hearing on RPZ 29 expansion on July 10 at 6:00 PM at Rainier Arts at 3515 S Alaska St. RPZ comments can be made at the hearing or to ColumbiaCityParking@seattle.gov by July 21.



PLANNED CHANGES

-  Paid, \$1/hr, 8 AM-8 PM Mon-Sat, 2 hr Limit, with 3 hours after 5 PM (60 spaces)
-  Paid, \$1/hr, 8 AM-8 PM Mon-Sat, 4 hr Limit (20 spaces)
-  RPZ, 7 AM-6 PM Mon-Fri, 2 hours except by permit (390 spaces)
-  Unpaid Time Limits, 7 AM-6 PM, Mon-Sat, 2 hr limit (40 spaces)
-  Sign No Parking
-  Establish Vehicle Turn-out Areas
-  Relocate Existing Daytime Load Zone and Add Passenger Load Only 6 PM - 2 AM
-  Add New RPZ 29 Parking Spaces
-  Designated Disabled Parking, 4 hr Limit

Public comments 6:20 – 7:00 PM

- Please state name clearly
- 2 minutes per person
- Please be respectful of others
- Comment sheets available

Next steps

Date	Activity/action
July 21, 2017	Last day for comments
Late July / early August	SDOT will review comments
Mid August	Residents will be notified of decision by mail
End of October 2017	If approved, sign installation (tentative)

Questions?

columbiacityparking@seattle.gov | (206) 733-9026
www.seattle.gov/transportation/parking/parkingrpz.htm

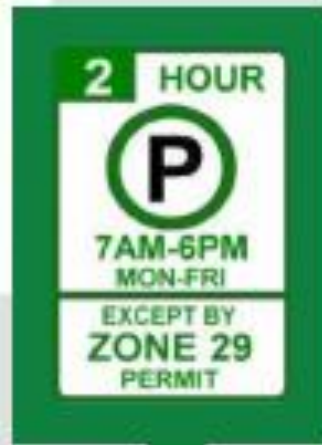
www.seattle.gov/transportation





Genesee Park
and Playfield

S ALASKA ST



S AMERICUS ST

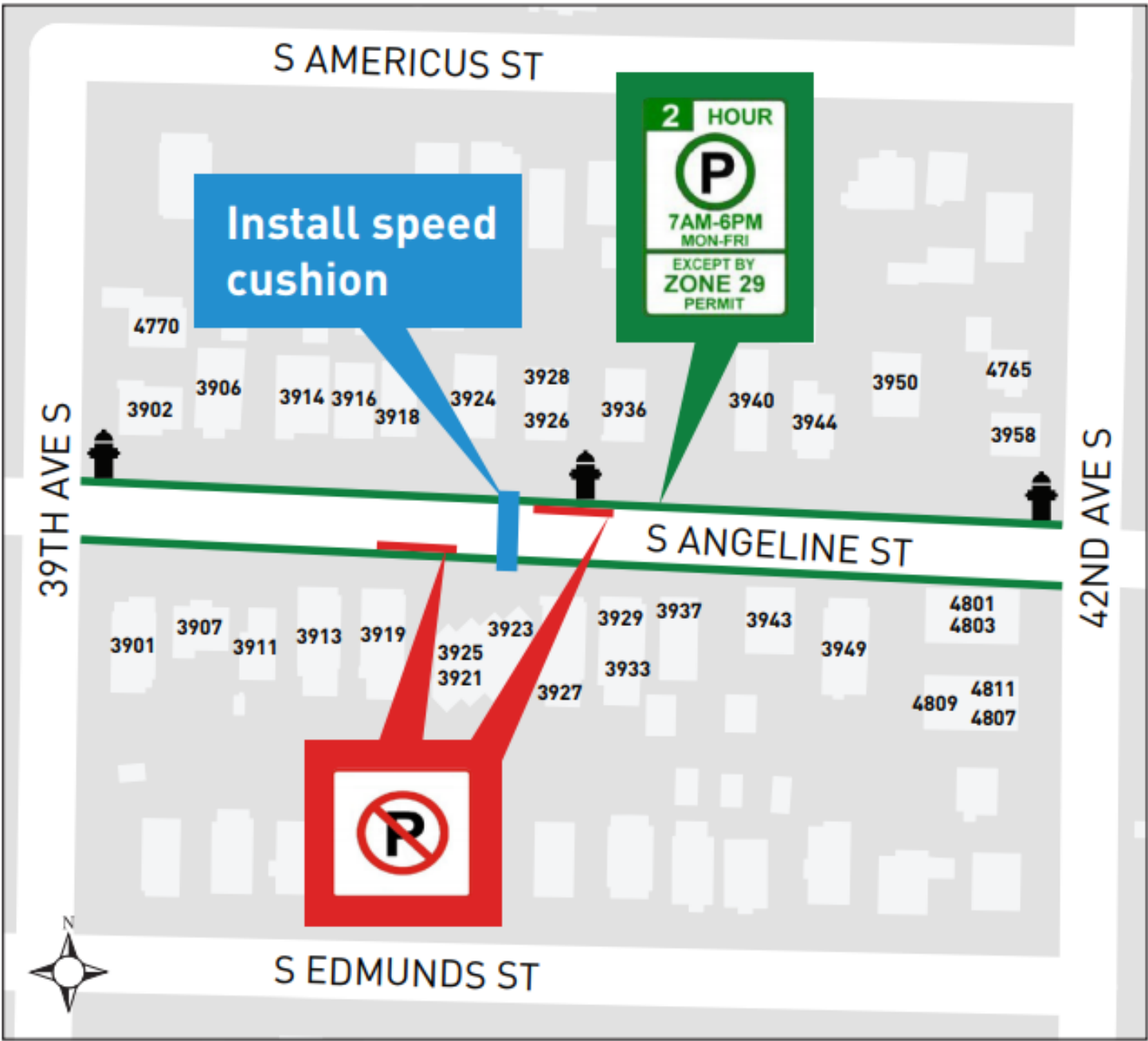


Install speed
cushion

39TH AVE S

S ANGELINE ST

42ND AVE S





S EDMUNDS ST



39TH AVES

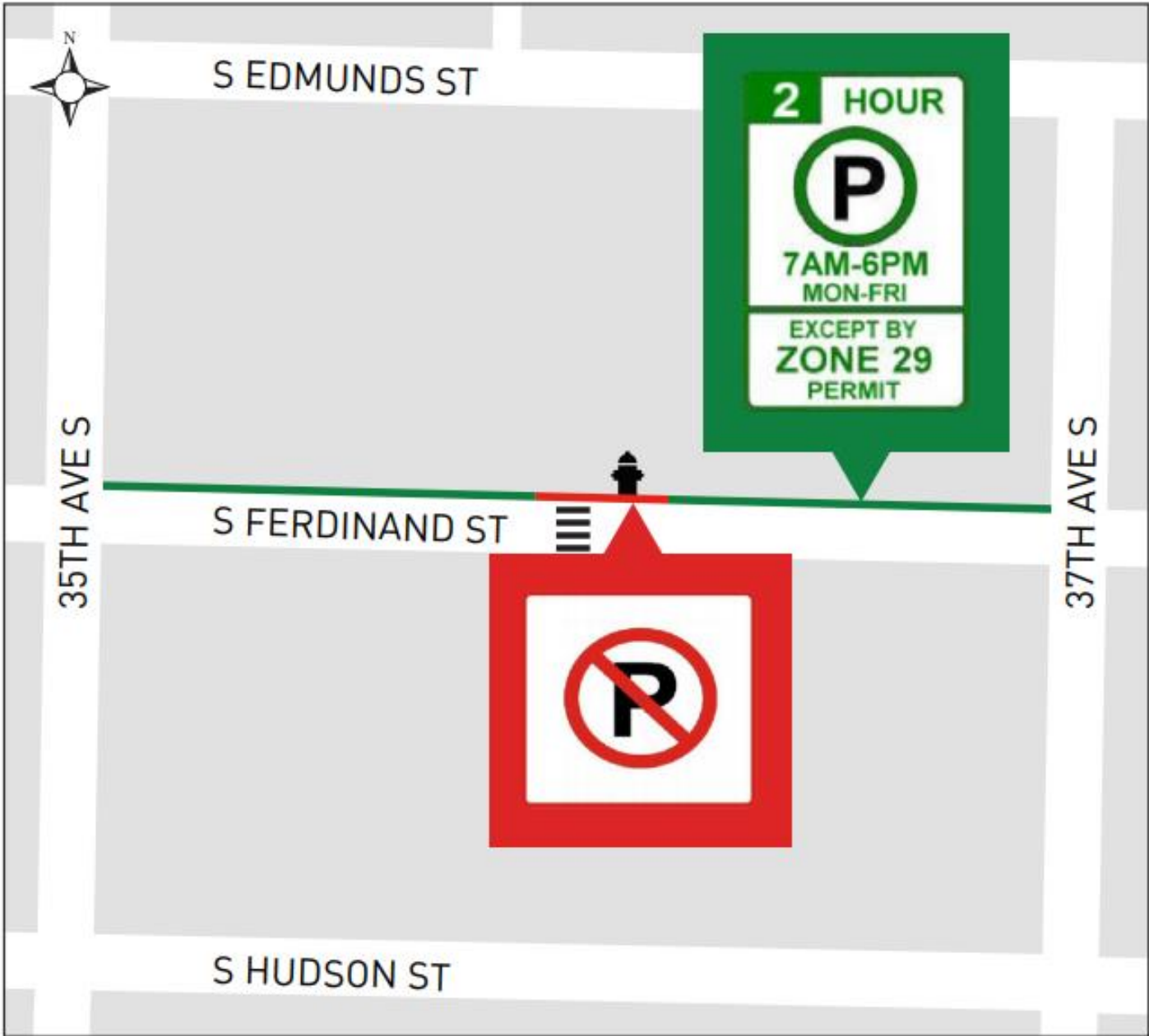
3902 3906 3912 3918 3924 3930 3932 3936 3940 3948 3950 4837 4839
3916 3924 3930 3932 3938 3948 3952 3956

S FERDINAND ST

42ND AVES

3903 3907 3911 3915 3917 3919 3921 3923 3929 3931 3933 3935 3943 3947 3953 3959





S EDMUNDS ST



35TH AVE S

S FERDINAND ST



37TH AVE S

S HUDSON ST

