



Ballard Ave Short Term Safety Improvements

20th Ave NW-22nd Ave NW



Our vision, mission, and core values

Vision: Seattle is a thriving equitable community powered by dependable transportation

Mission: to deliver a transportation system that provides safe and affordable access to places and opportunities

Committed to **6 core values:**

- Equity
- Safety
- Mobility
- Sustainability
- Livability
- Excellence

Presentation overview

1. Background
2. Landmark District Values and Priorities
3. Observations
4. Short Term Safety Recommendations
5. Engagement
6. Discussions/Questions

2021 Workshop Recommendations



- Implement interim changes to increase safety, and improve flow of goods and people
- Develop interim guidelines to be used between now and any permanent changes to Ballard Avenue
- Continue the conversation on permanent changes to Ballard Avenue
- Coordinate with SDOT to keep Ballard Avenue and City-wide street café work aligned

2021 Workshop Recommendations



- Implement interim changes to increase safety, and improve flow of goods and people
- Develop interim guidelines to be used between now and any permanent changes to Ballard Avenue
- Continue the conversation on permanent changes to Ballard Avenue
- Coordinate with SDOT to keep Ballard Avenue and City-wide street café work aligned

2021 Workshop - What we heard



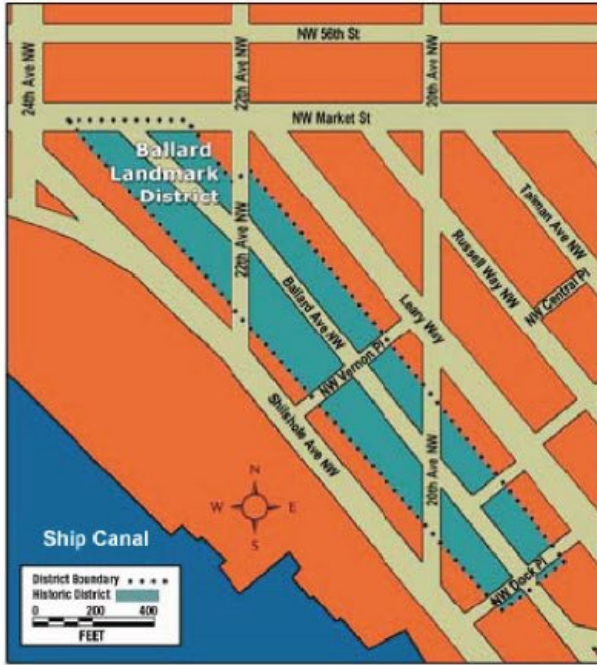
What's Working

- One-way streets prioritizing loading zone and deliveries
- Less traffic
- Street life experience

What's Not

- Sidewalks feel narrow, limited right of way
- Signage & Safety - cars drive recklessly very close to pergolas

Ballard Ave Landmark District

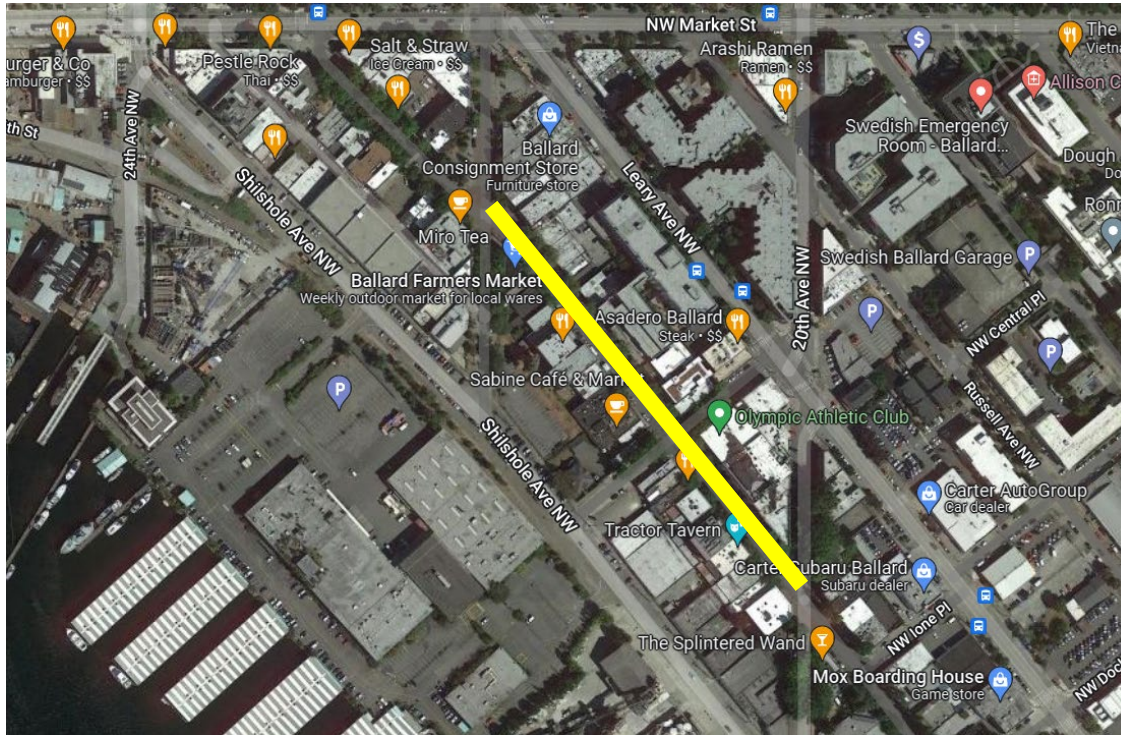


Landmark District Values and Principles

- Maintain a pedestrian-oriented experience with emphasis at street level
- Enhance cultural, social, and economic activation
- Preserve the distinctive physical characteristics of the District's buildings and public spaces

Short Term Safety Improvements Project Extents

20th Ave NW – 22nd Ave NW



Existing Conditions



Existing Conditions



Existing Conditions



Existing Conditions



Existing Conditions



Existing Conditions



Existing Conditions



Existing Conditions



Existing Conditions



Existing Conditions



Existing Conditions



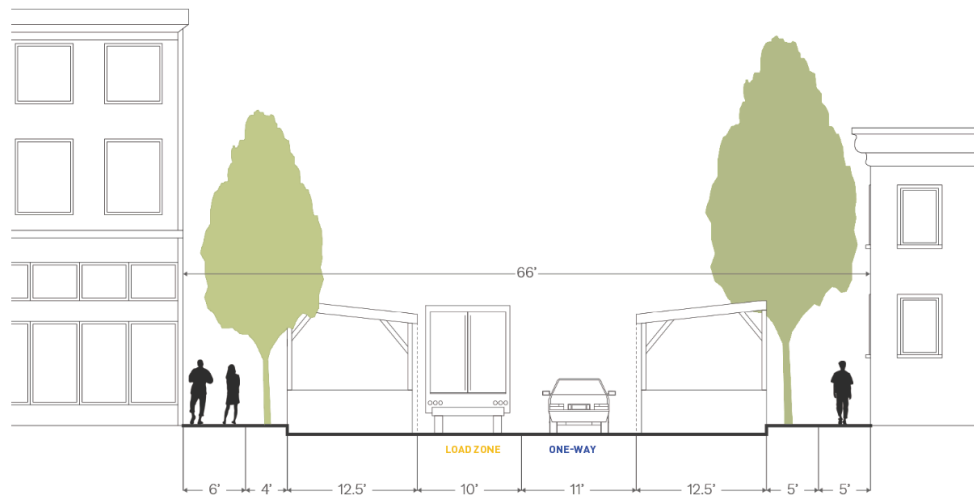
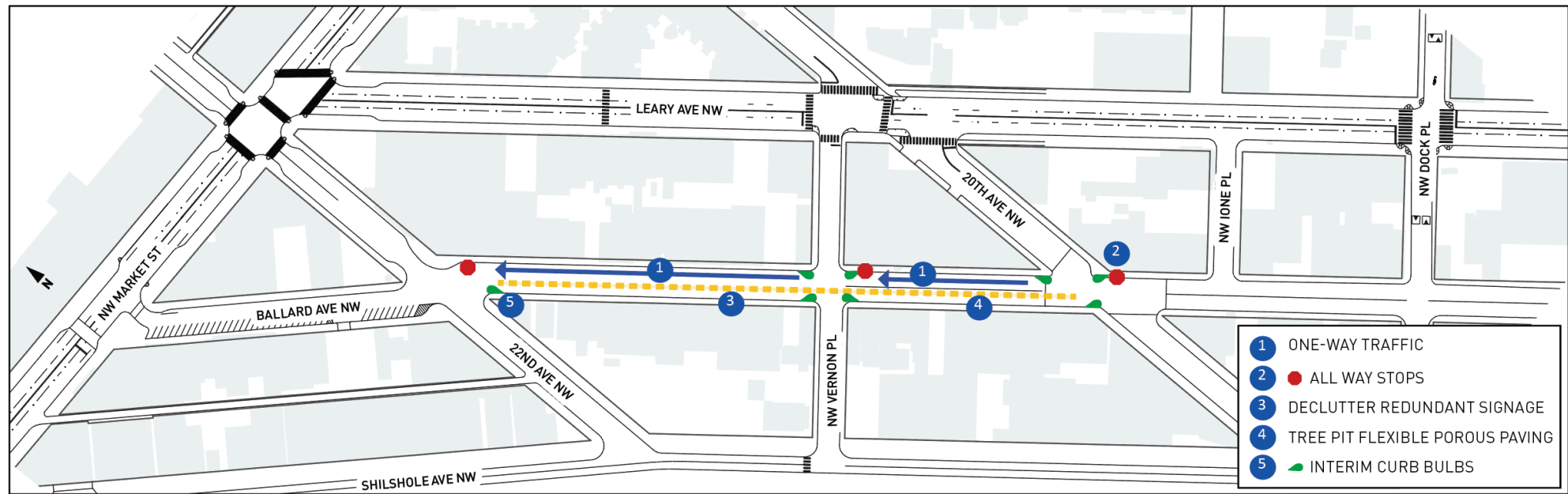
Existing Conditions



Short Term Safety Improvements

20th Ave NW – 22nd Ave NW

1. Introduce stop signs at 20th Ave NW, Vernon Pl, and 22nd Ave NW; refresh old stop signs; formalize one-way signs; remove barricades and a-frames
2. Remove center yellow-line. Restripe to reflect the one-way operations, a loading lane, and loading and parking areas
3. Add interim curb bulbs (paint, posts, and planters) per locations on slide 22
4. Organize parking and loading activities to improve legibility
5. Install Flexible Porous Paving at tree pits to improve sidewalk environment; no impacts to native landscaped areas maintained by business
6. Declutter redundant signs in sidewalk and along roadway



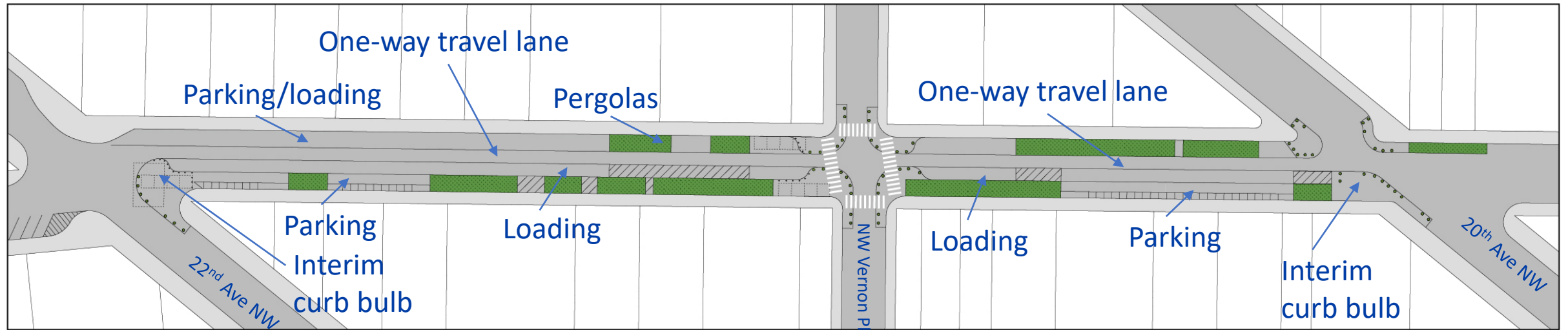
Section looking North-West



Example of paint and planter interim curb bulb

Near Term Safety Recommendations

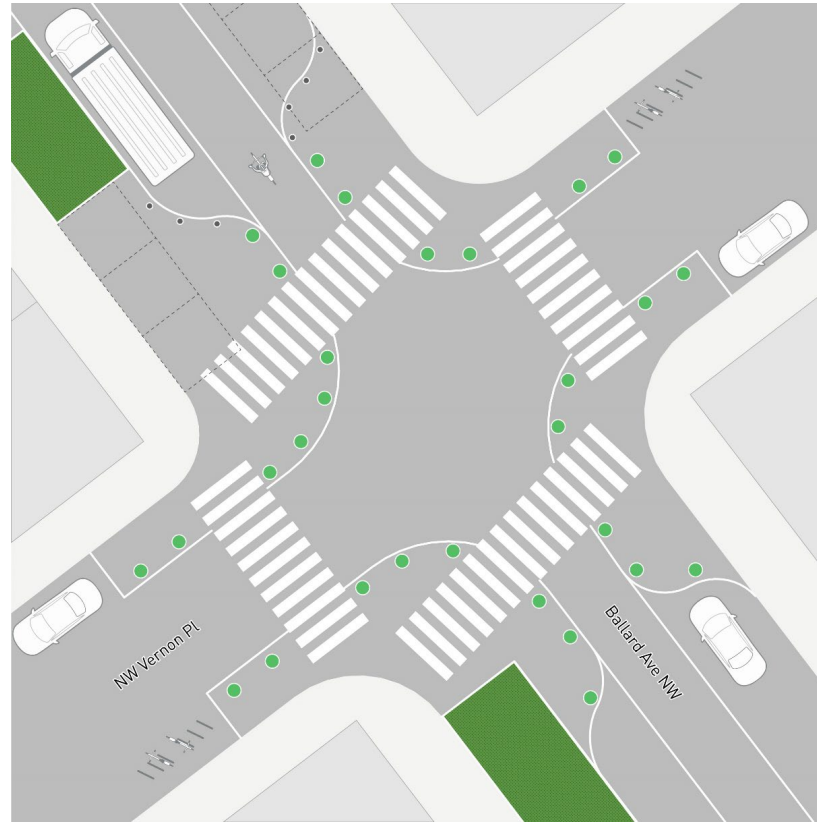
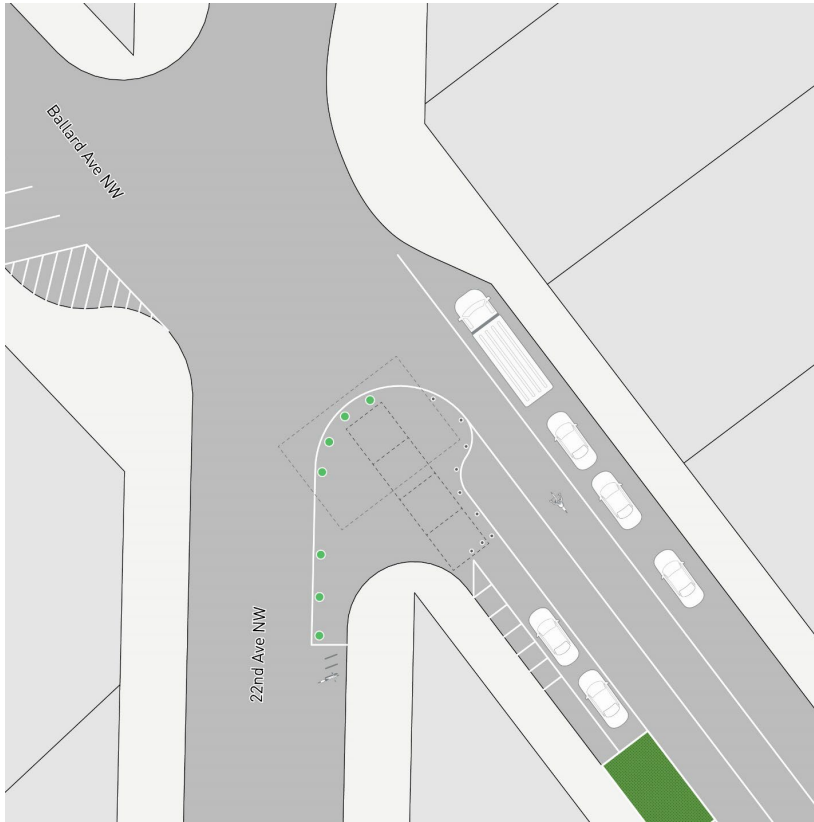
20th Ave NW - 22nd Ave NW



Conceptual sketch, subject to engineering refinements,
including striping and signage refinements

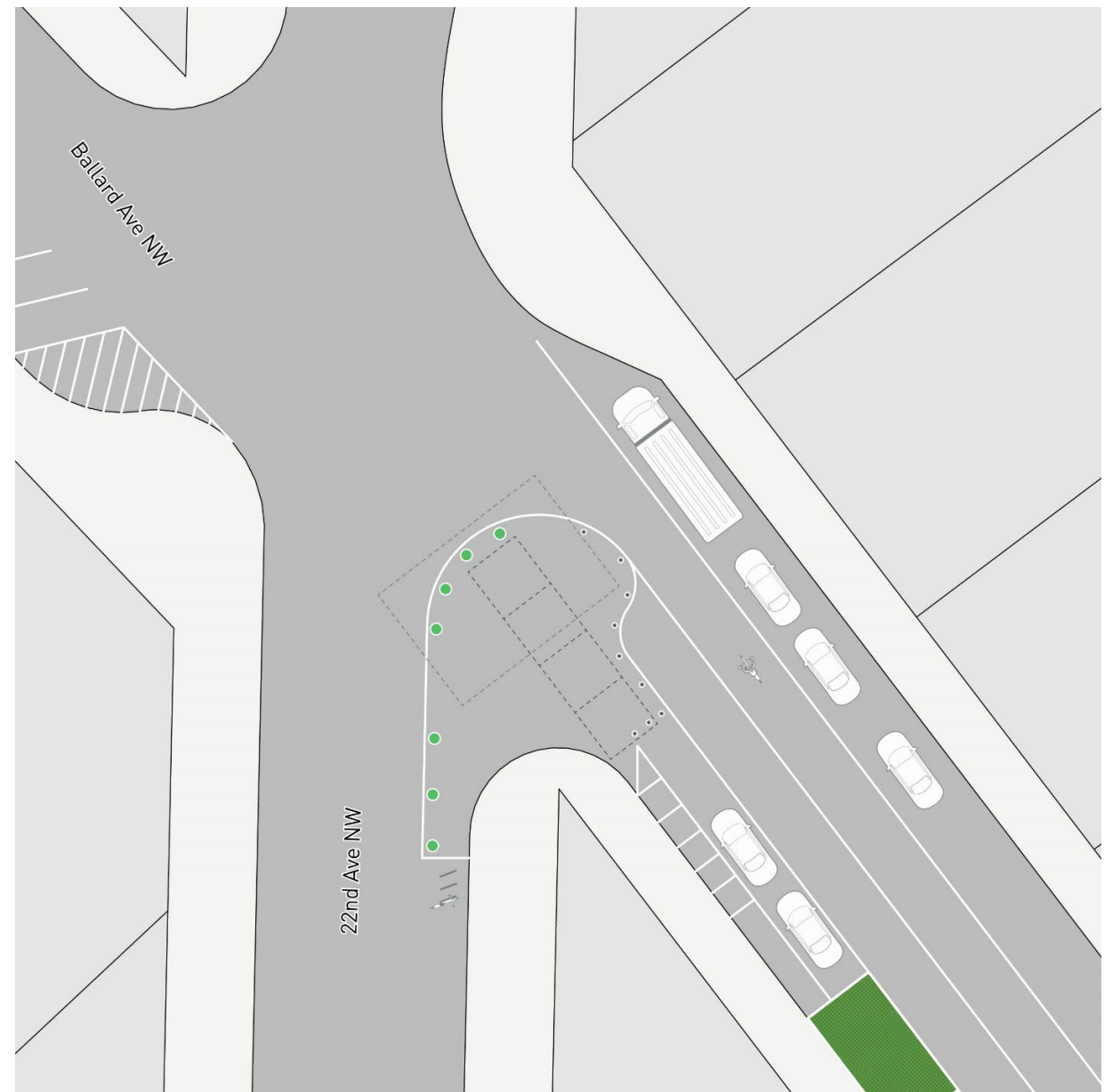
Near Term Safety Recommendations

20th Ave NW - 22nd Ave NW



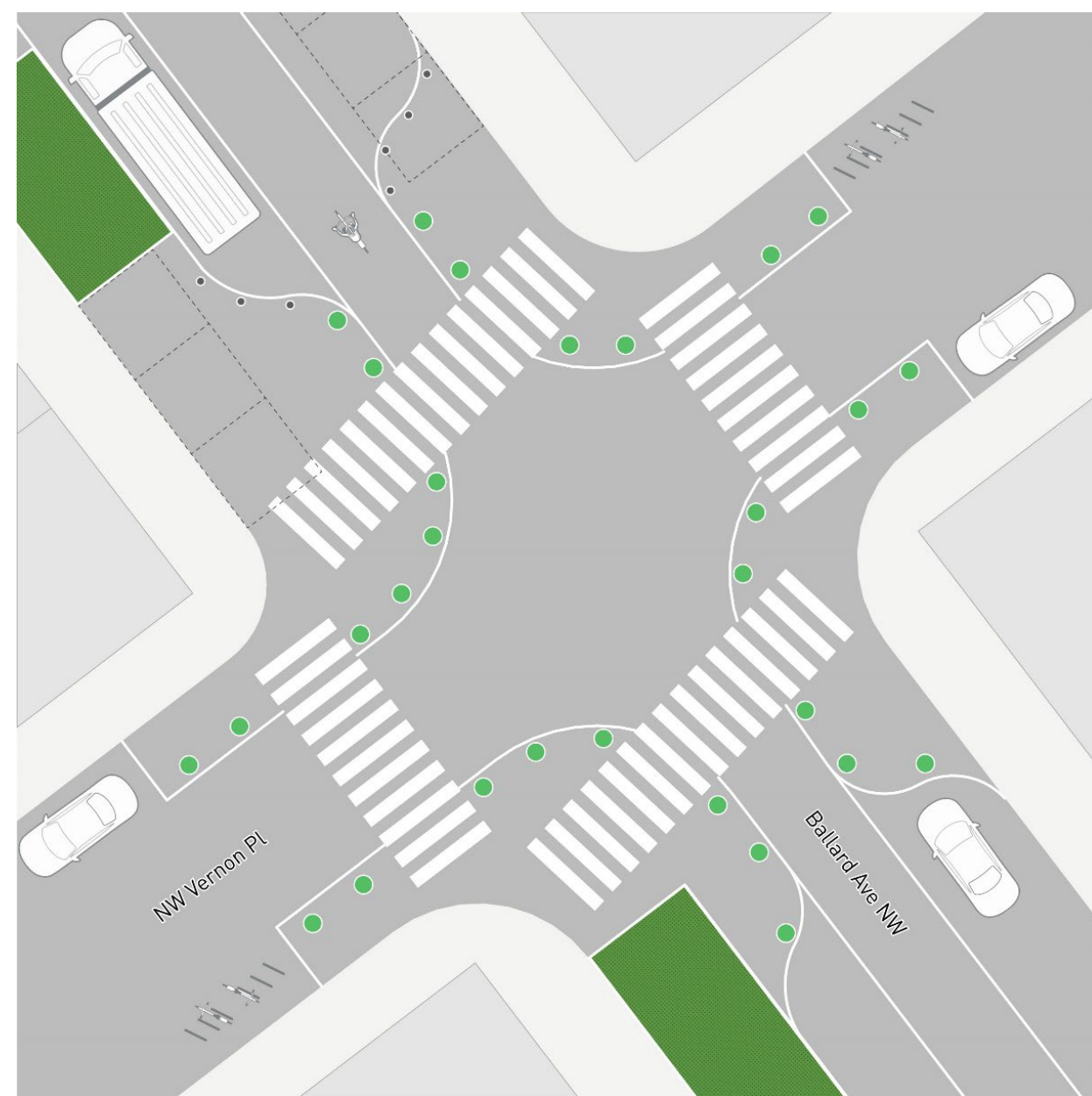
22nd Ave NW

Conceptual sketch, subject to engineering refinements,
including striping and signage refinements



NW Vernon Pl

Conceptual sketch, subject to engineering refinements,
including striping and signage refinements



20th Ave NW

Conceptual sketch, subject to engineering refinements,
including striping and signage refinements



Planter concept - standard - recommended



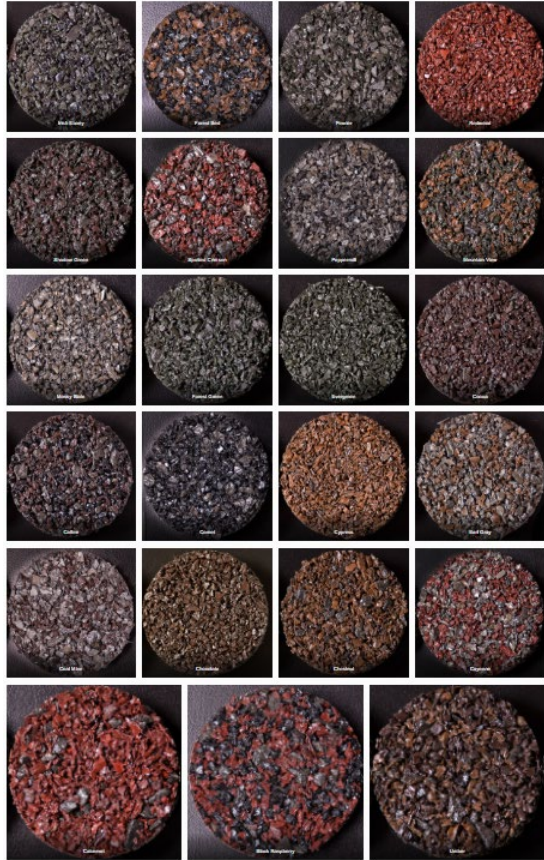
Planter concept - restrained



Planter concept – pop of color



Flexible Porous Paving



Community Outreach

Ongoing

- Ballard Alliance
- Ballard Farmers Market
- North Seattle Industrial Association

Upcoming

- Business outreach
- Farmers market booth
- Review concepts with Parking Enforcement teams

Upcoming Milestones/Timeline

Spring 2022

- i. Outreach
- ii. Administrative Certificate of Approval
- iii. Detailed design

Summer 2022 -Implementation

- i. Signs and marking updates
- ii. Decluttering and new signs
- iii. Flexible porous paving

Questions?

Aditi.Kambuj@seattle.gov
www.seattle.gov/transportation
www.seattle.gov/transportation

