



Lake City Parking Study 2017

Background:

This document contains results and maps for a parking occupancy and duration study covering commercial and mixed-use blocks in the Lake City Urban Village. Data were collected on Wednesday June 14, 2017. Prior to the study, SDOT staff met with the North Seattle Chamber of Commerce and Lake City Future First in February 2017 to discuss the upcoming study.

The study area included 516 parking spaces across 40 blockfaces. The study area is a mix of unpaid time limits and unrestricted parking (allows parking up to 72 hours).

Study Results:

Occupancy:

- Across the entire study area, parking occupancy peaked at 51% at 11 AM and dropped to a low of 40% at 8 PM, the final hour of study.
- Multiple blockfaces showed parking occupancy above 85% during the 11 AM peak, as shown on the Lake City Parking Study results map. These include portions of 30th Ave NE, 31st Ave NE, 33rd Ave NE, and NE 130th St. In general, the streets with the highest occupancy are unrestricted blockfaces closest to the commercial district.

Duration:

- Across all spaces (including those without time limits) the average parking duration is just over 3 hours. Over half of vehicles parking in the area parked for less than two hours.

Study Conclusions:

- Existing time limits are working to provide short term customer and visitor access.
- SDOT is contacting property managers on 33rd Ave NE to explore opportunities to add new areas of time limited parking.

SDOT Contact:


Jonathan.Williams@seattle.gov

206-733-9026

Lake City

Neighborhood: Lake City
 Day of Week: Wednesday
 Collection Date: 6/14/2017

On-Street Block Data
 Number of Block Faces: 40
 Study Area Spaces: 516






Data Collection Notes
 Weather: 

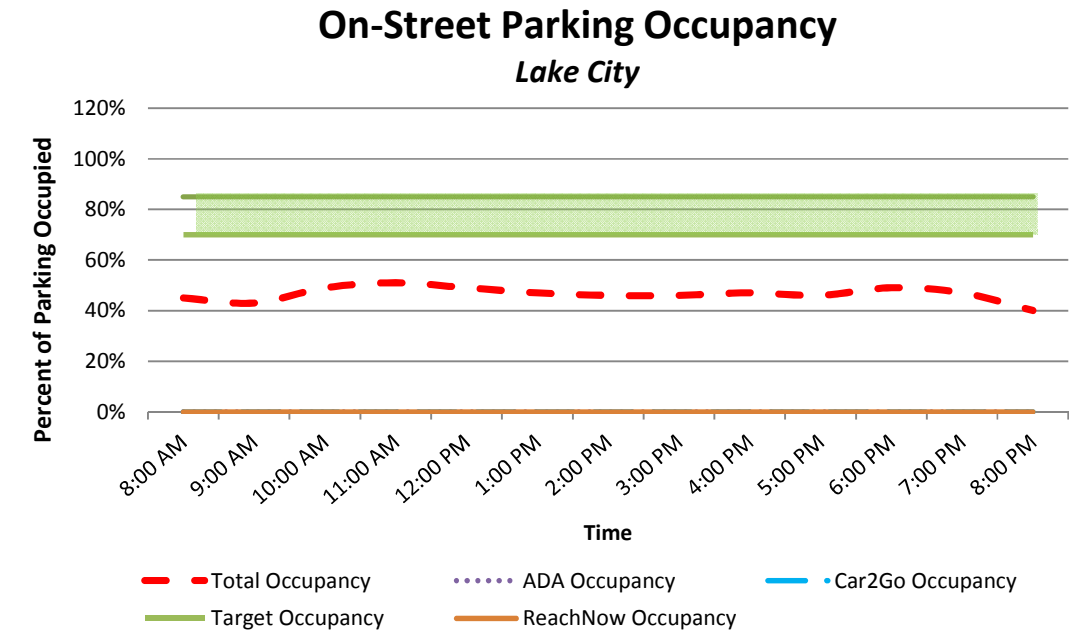
Data Collected: Occupancy
 Blocks under Construction: 0

Time Period	Average
9 AM - 10 AM	46%
6 PM - 7 PM	48%




Time Period	Peak 3 Hours	Peak 3 Hour Average Occupancy
11 AM - 4 PM	11:00 AM	49%
	12:00 PM	
	4:00 PM	
8 AM - 5 PM	11:00 AM	50%
	12:00 PM	
	10:00 AM	
8 AM - 7 PM	11:00 AM	50%
	6:00 PM	
	12:00 PM	

Target Rating

- < 65% Low 
- 65% - 69% Low - Watch list 
- 70% - 85% Meets Target 
- 86% - 90% High - Watch list 
- > 90% High 

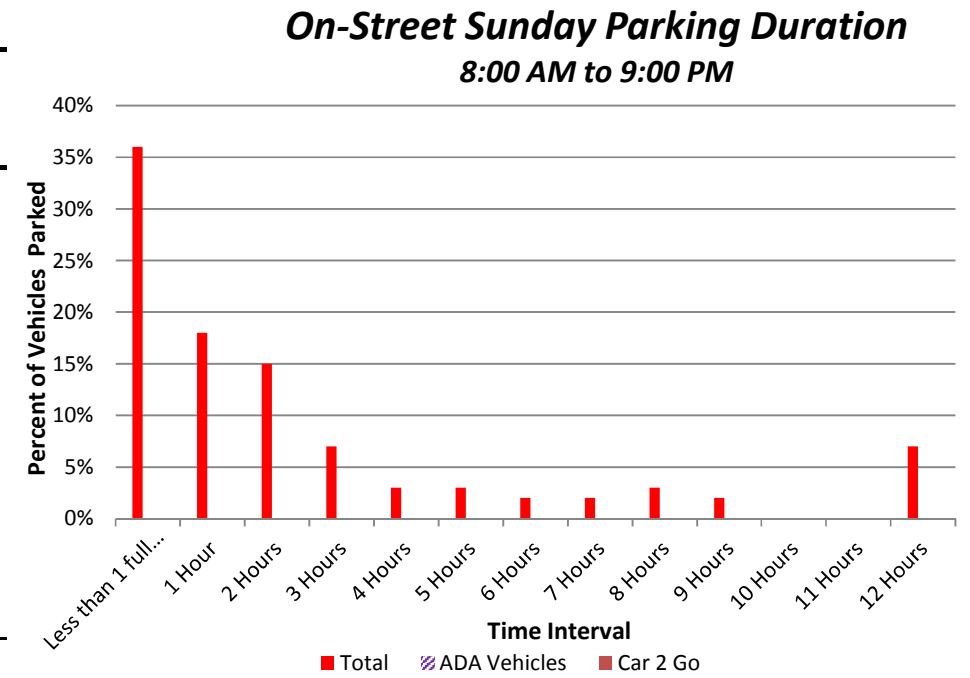


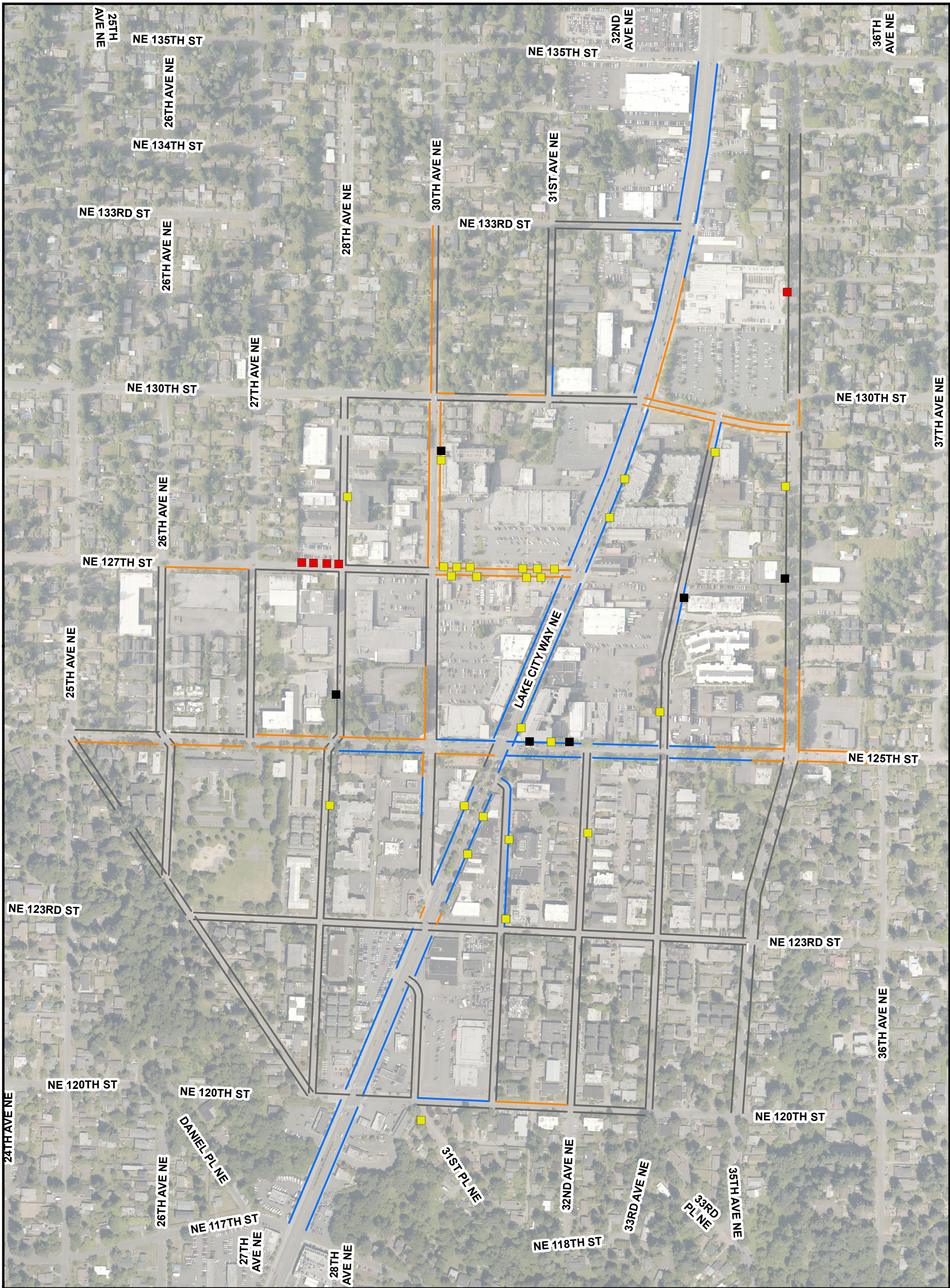
Occupancy by Hour

Time	Study Area Spaces	All Vehicles		ADA Vehicles 		CAR 2GO 		ReachNow 	
		Parked	Occupancy	Parked	Occupancy	Parked	Occupancy	Parked	Occupancy
8:00 AM	495	221	45%	1	0%	0	0%	0	0%
9:00 AM	516	220	43%	0	0%	0	0%	0	0%
10:00 AM	516	255	49%	0	0%	0	0%	0	0%
11:00 AM	516	265	51%	0	0%	0	0%	0	0%
12:00 PM	516	251	49%	2	0%	0	0%	0	0%
1:00 PM	516	243	47%	2	0%	0	0%	0	0%
2:00 PM	516	236	46%	2	0%	1	0%	0	0%
3:00 PM	491	226	46%	2	0%	1	0%	0	0%
4:00 PM	458	216	47%	2	0%	0	0%	0	0%
5:00 PM	458	210	46%	1	0%	1	0%	0	0%
6:00 PM	502	248	49%	1	0%	1	0%	0	0%
7:00 PM	516	240	47%	0	0%	0	0%	0	0%
8:00 PM	516	204	40%	0	0%	0	0%	0	0%
Average:	501	236	46%	1	0%	0	0%	0	0%

Duration count sample 516
 No RPZ blocks in duration sample

Sampling of Duration								
Time Interval	Total		ADA Vehicles		Car 2 Go		BMW Reach Now	
	Number of Vehicles Parked	Percent of Total Vehicles Parked	Number of Vehicles Parked	Percent of Total Vehicles Parked	Number of Vehicles Parked	Percent of Total Vehicles Parked	Number of Vehicles Parked	Percent of Total Vehicles Parked
Less than 1 full interval	301	36%	3	0%	0	0%	0	0%
1 Hour	152	18%	1	0%	2	0%	0	0%
2 Hours	121	15%	0	0%	0	0%	0	0%
3 Hours	58	7%	2	0%	0	0%	0	0%
4 Hours	28	3%	0	0%	0	0%	0	0%
5 Hours	23	3%	0	0%	0	0%	0	0%
6 Hours	19	2%	0	0%	0	0%	0	0%
7 Hours	17	2%	0	0%	0	0%	0	0%
8 Hours	29	3%	0	0%	0	0%	0	0%
9 Hours	19	2%	0	0%	0	0%	0	0%
10 Hours	2	0%	0	0%	0	0%	0	0%
11 Hours	2	0%	0	0%	0	0%	0	0%
12 Hours	61	7%	0	0%	0	0%	0	0%
Total Vehicles Parked	832		6		2		0	
Average Stay (hrs):	3.15		1.67		1.50		NA	





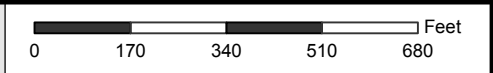
Legend

Load Zones

- 15 or 30 Minute Load Zone
- 3 Minute Passenger Load Zone
- 30 Minute Truck Load Zone

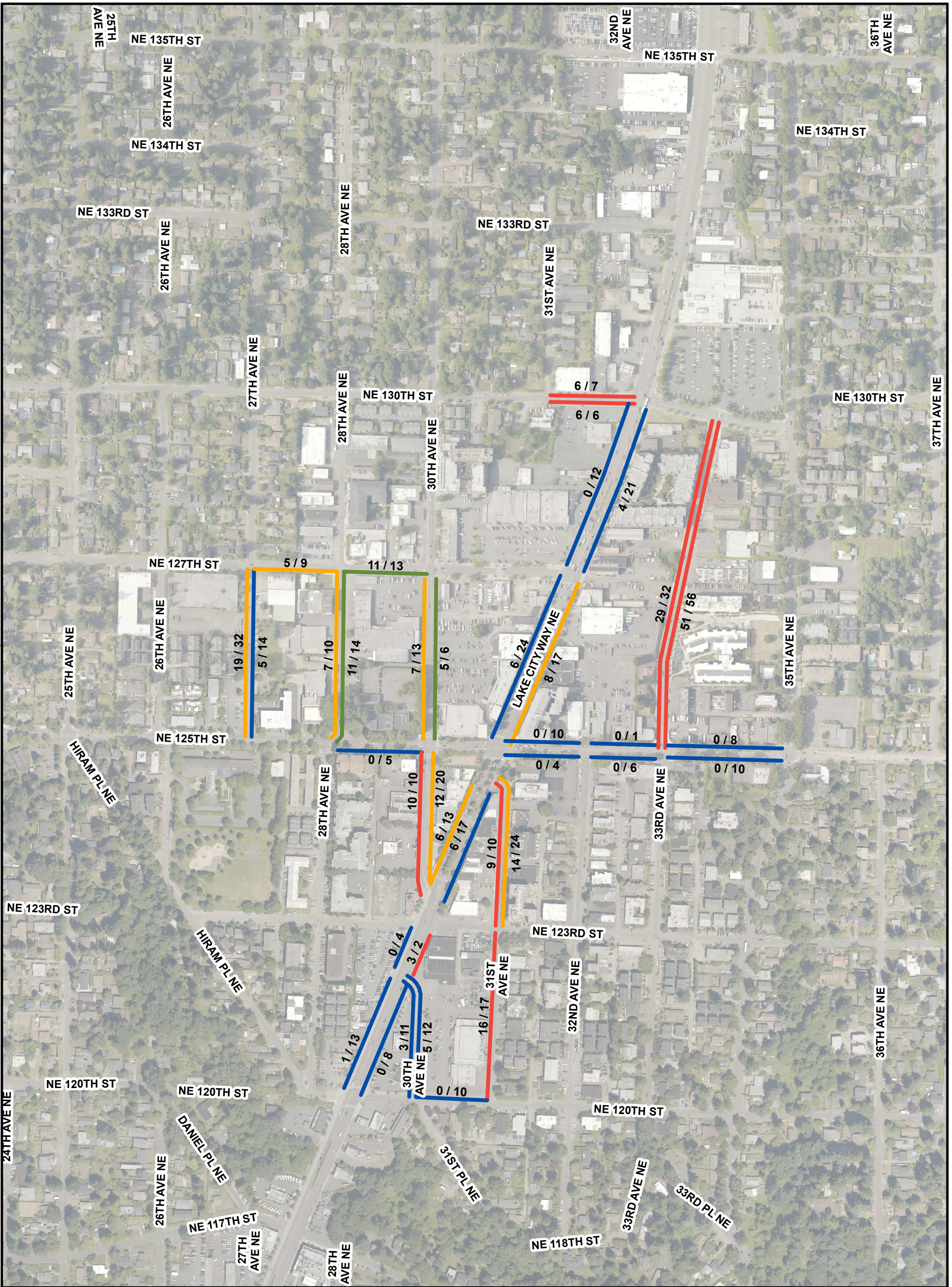
Parking Category

- No Parking Allowed
- Unrestricted Parking
- Time Limited Parking



©2017, THE CITY OF SEATTLE. All rights reserved.
 Produced by the Seattle Department of Transportation.
 No warranties of any sort, including accuracy, fitness or
 merchantability, accompany this product.
 Coordinate System: State Plane, NAD83-91
 Washington, North Zone
 Orthophoto Source: Pictometry
 PLOT DATE : 10/17/2017
 AUTHOR : Patrick Lee
 Lake City

Lake City Existing Conditions



Legend

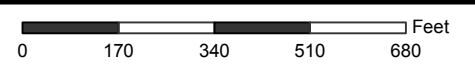
Parking Occupancy

— < 55%
 — 56% - 70%
 — 71% - 85%
 — 86% <

X / X Parked Vehicles / Parking Supply

Results for 11 AM, which was peak occupancy
Data Collected on June 14, 2017

Lake City Parking Study



©2017, THE CITY OF SEATTLE. All rights reserved.
 Produced by the Seattle Department of Transportation.
 No warranties of any sort, including accuracy, fitness or
 merchantability, accompany this product.
 Coordinate System: State Plane, NAD83-91
 Washington, North Zone
 Orthophoto Source: Pictometry
 PLOT DATE : 10/17/2017
 AUTHOR : Patrick Lee
 Lake City