



City of Seattle

Edward B. Murray, Mayor

Department of Transportation

Scott Kubly, Director

Little Saigon Parking

January 27, 2016

Little Saigon Public Safety Committee Meeting - Sierra Public School, 1025 S King St

1. Little Saigon Parking Management Overview

SDOT

- a. SDOT Parking Types / Can I Park Here? brochures
- b. Current neighborhood parking types by street
- c. Employee travel options / ORCA LIFT

2. Spring 2014 On-Street Study

- a. Thursday, 4/17/14 Study – 344 spaces
 - i. Parking areas without time limits (parts of 10th Ave S, S King St, and S Weller St) mostly full by 9 AM
 - ii. Parking available in time limited areas all day, total occupancy peaked at 68% at 1 PM
- b. Sunday, 4/30/14 Study – 391 spaces
 - i. Parking occupancy low in morning, peaked at 54% at 2 PM
 - ii. Duration study noted 806 unique vehicles. Most parked for less than 2 hours (76%), with most of those parking for less than one hour.

3. Questions and Discussion

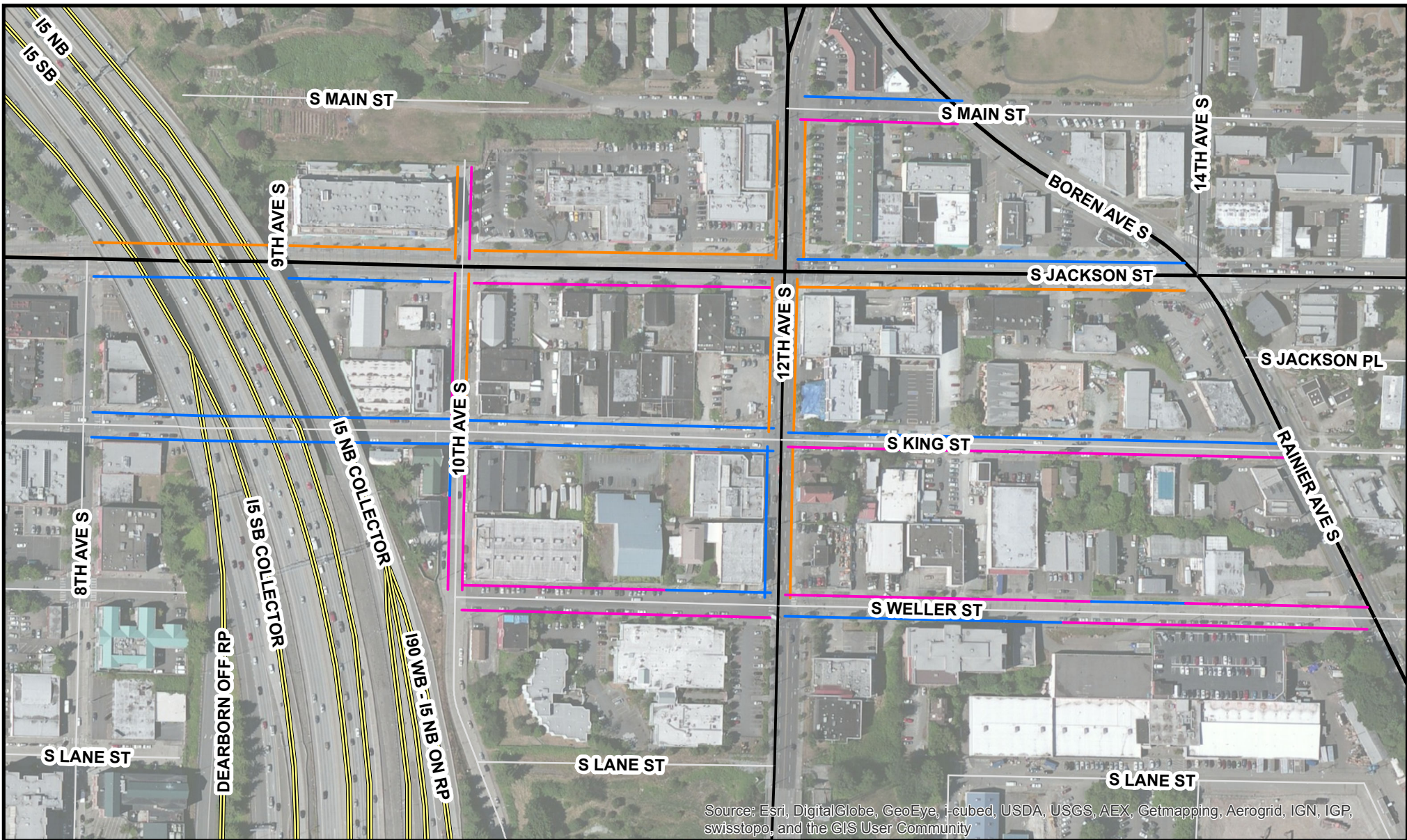
All

SDOT Staff:

Jonathan Williams, jonathan.williams2@seattle.gov, 206-733-9026

Seattle Municipal Tower
700 5th Avenue
Suite 3800
PO Box 34996
Seattle, Washington 98124-4996

Tel (206) 684-ROAD / (206) 684-5000
Fax: (206) 684-5180
Hearing Impaired use the Washington Relay Service (7-1-1)
www.seattle.gov/transportation



Source: Esri, DigitalGlobe, GeoEye, i-cubed, USDA, USGS, AEX, Getmapping, Aerogrid, IGN, IGP, swisstopo, and the GIS User Community

Legend

- Time Limited Parking
- No Parking Allowed
- Unrestricted Parking

Blocks may contain a mix of parking types. Load zones, transit stops, driveways, and peak period restrictions are not shown.

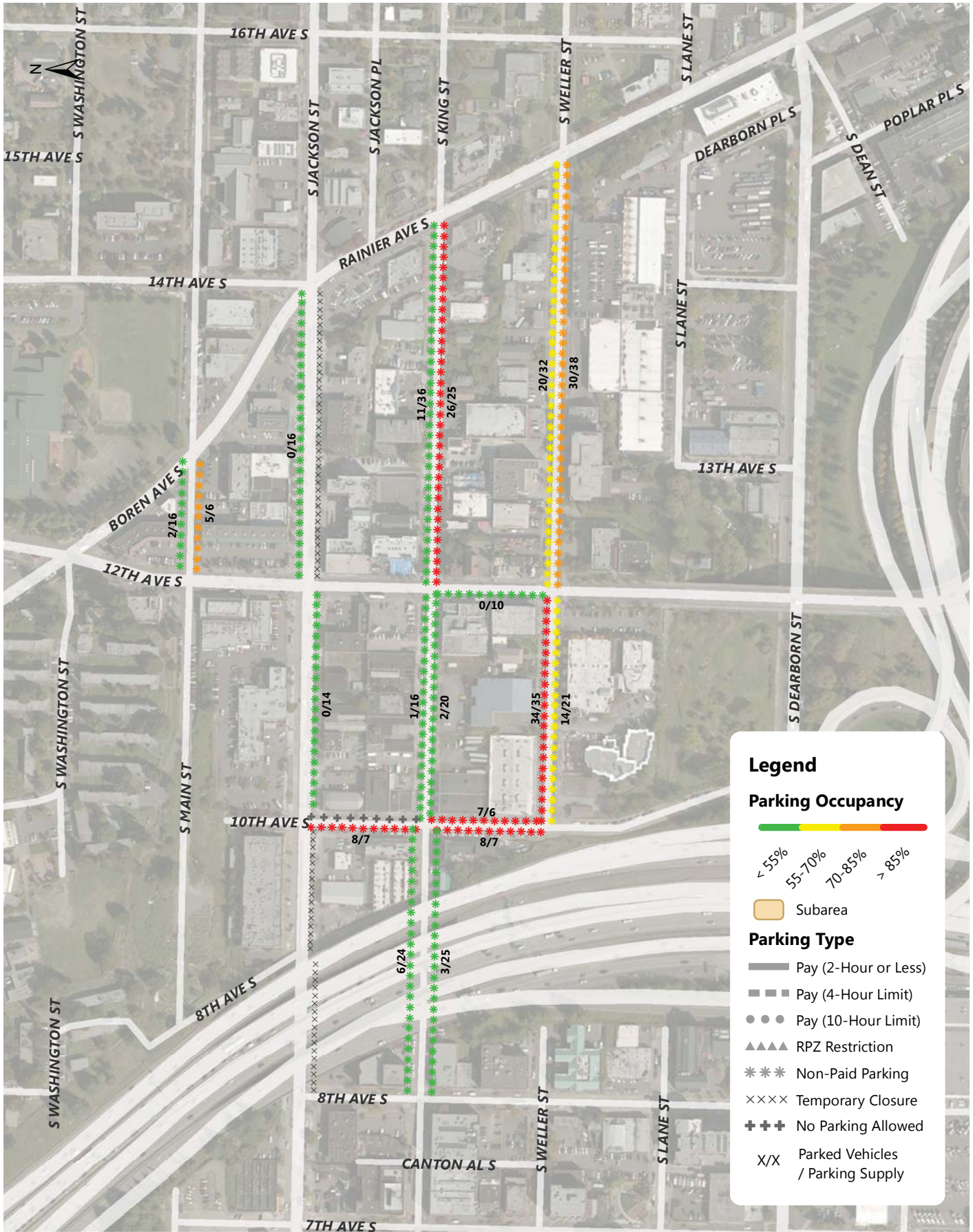


©2010, THE CITY OF SEATTLE. All rights reserved. Produced by the Seattle Department of Transportation. No warranties of any sort, including accuracy, fitness or merchantability, accompany this product.

Coordinate System: State Plane, NAD83-91, Washington, North Zone
Orthophoto Source: Pictometry

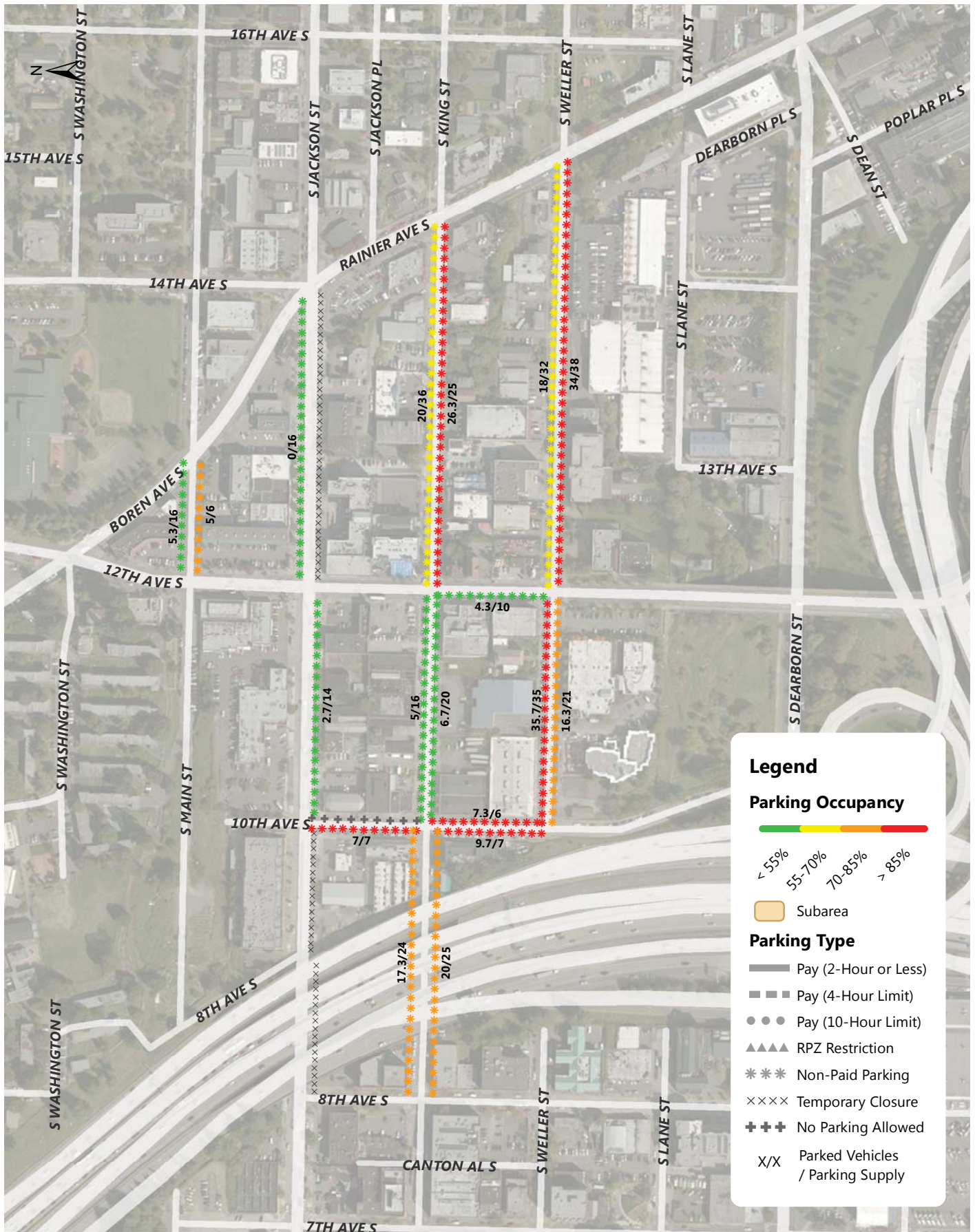
PLOT DATE : 1/20/16
AUTHOR : J Williams
Check-ins/Little Saigon

Little Saigon On-Street Parking



Little Saigon Weekday Parking Occupancy 9-10AM Occupancy of Each Blockface

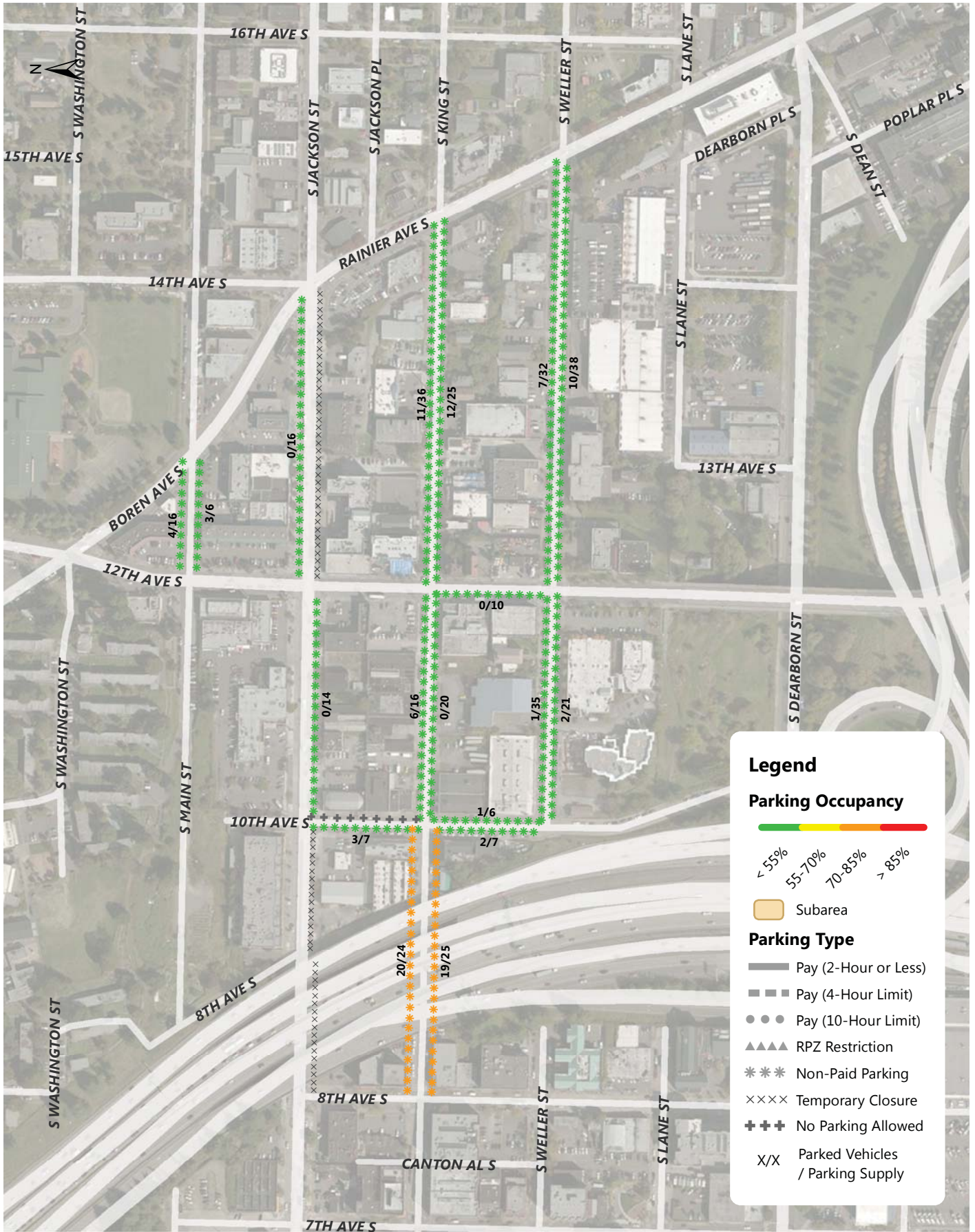
Annual Parking Study - Spring 2014



Little Saigon Weekday Parking Occupancy Average Peak 3 Hours of Each Blockface (11AM-5PM)

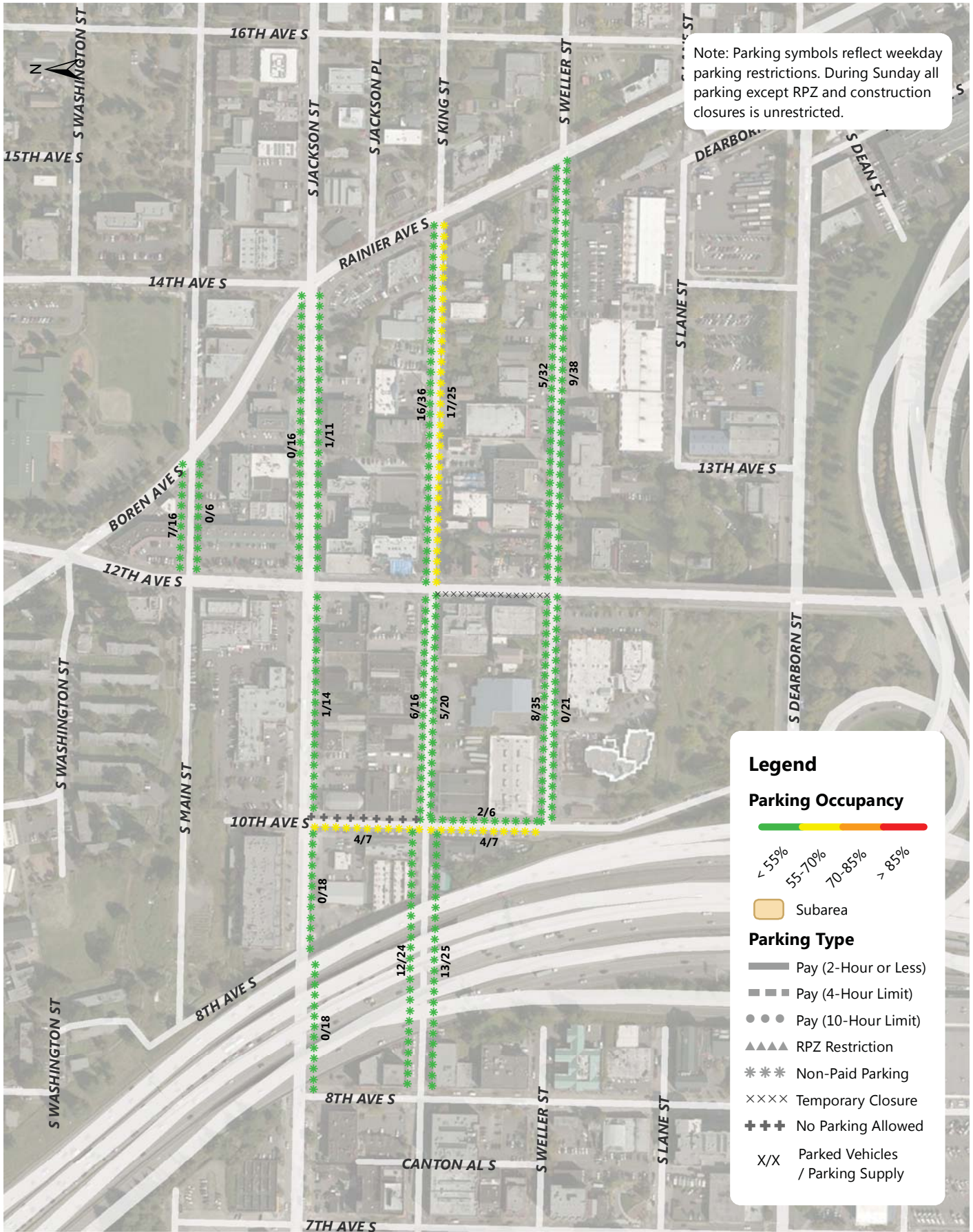
Annual Parking Study - Spring 2014





Little Saigon Weekday Parking Occupancy 7PM Occupancy of Each Blockface

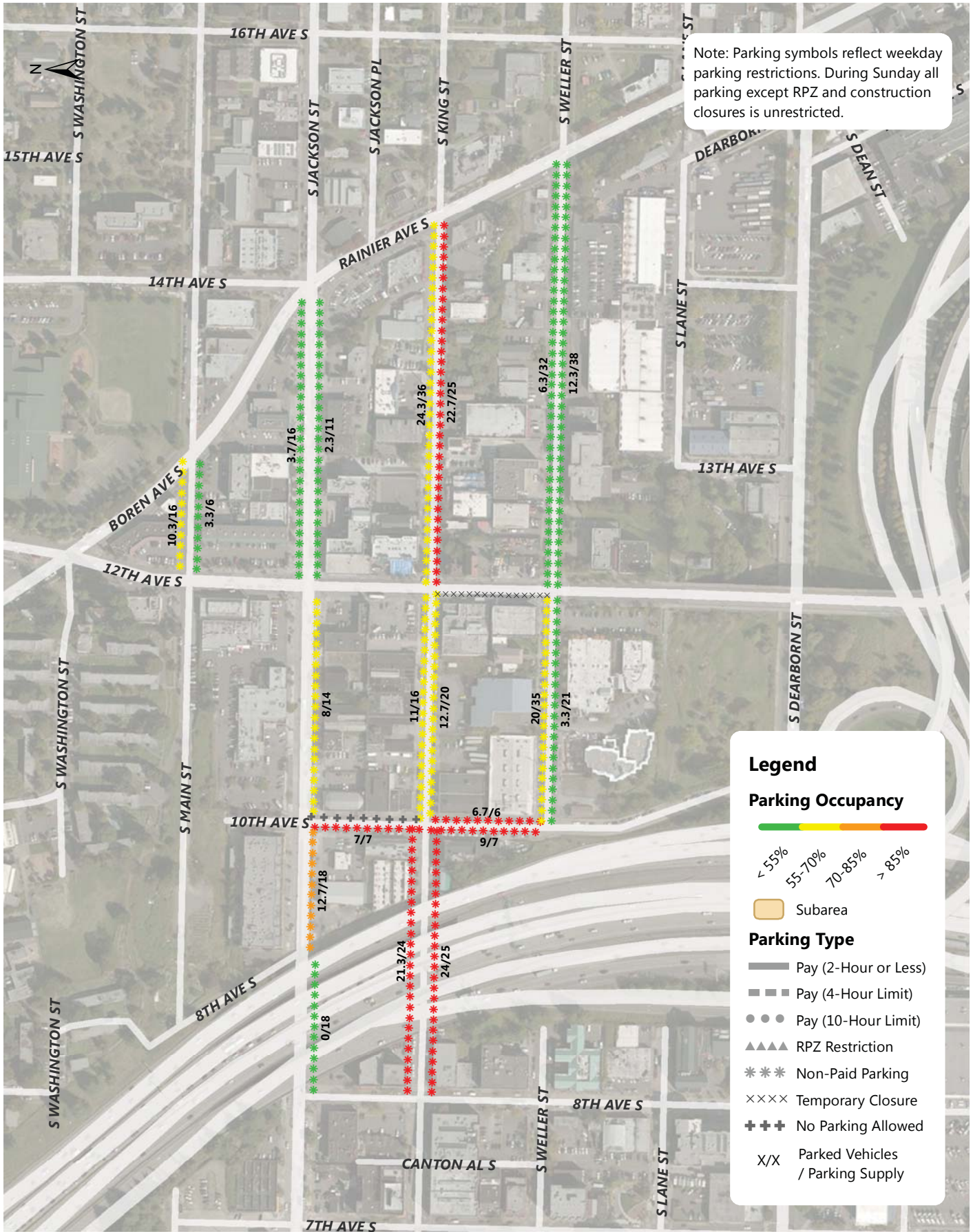
Annual Parking Study - Spring 2014



Little Saigon Sunday Parking Occupancy 9-10AM Occupancy of Each Blockface

Annual Parking Study - Spring 2014

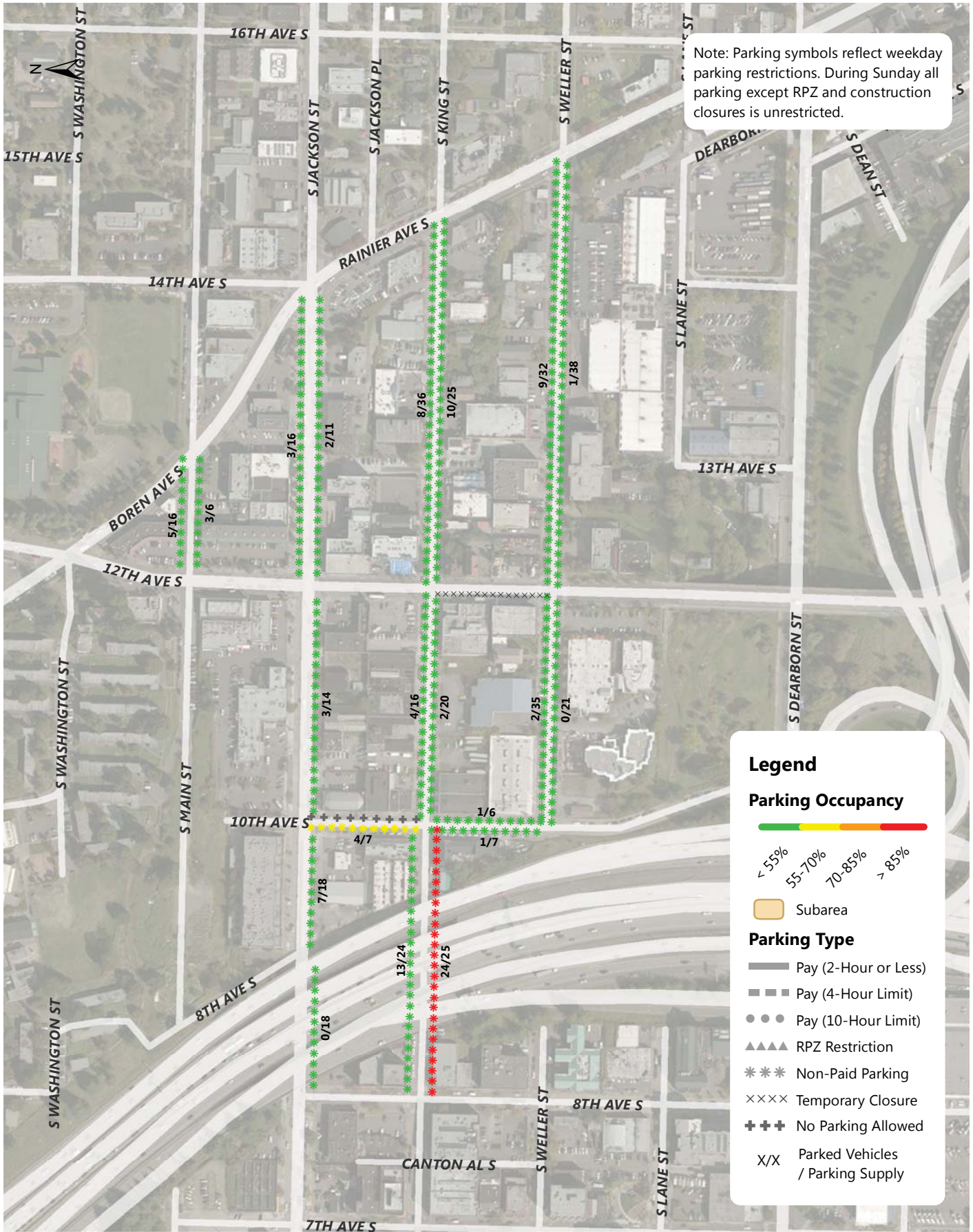




Little Saigon Sunday Parking Occupancy Average Peak 3 Hours of Each Blockface (11AM-5PM)

Annual Parking Study - Spring 2014

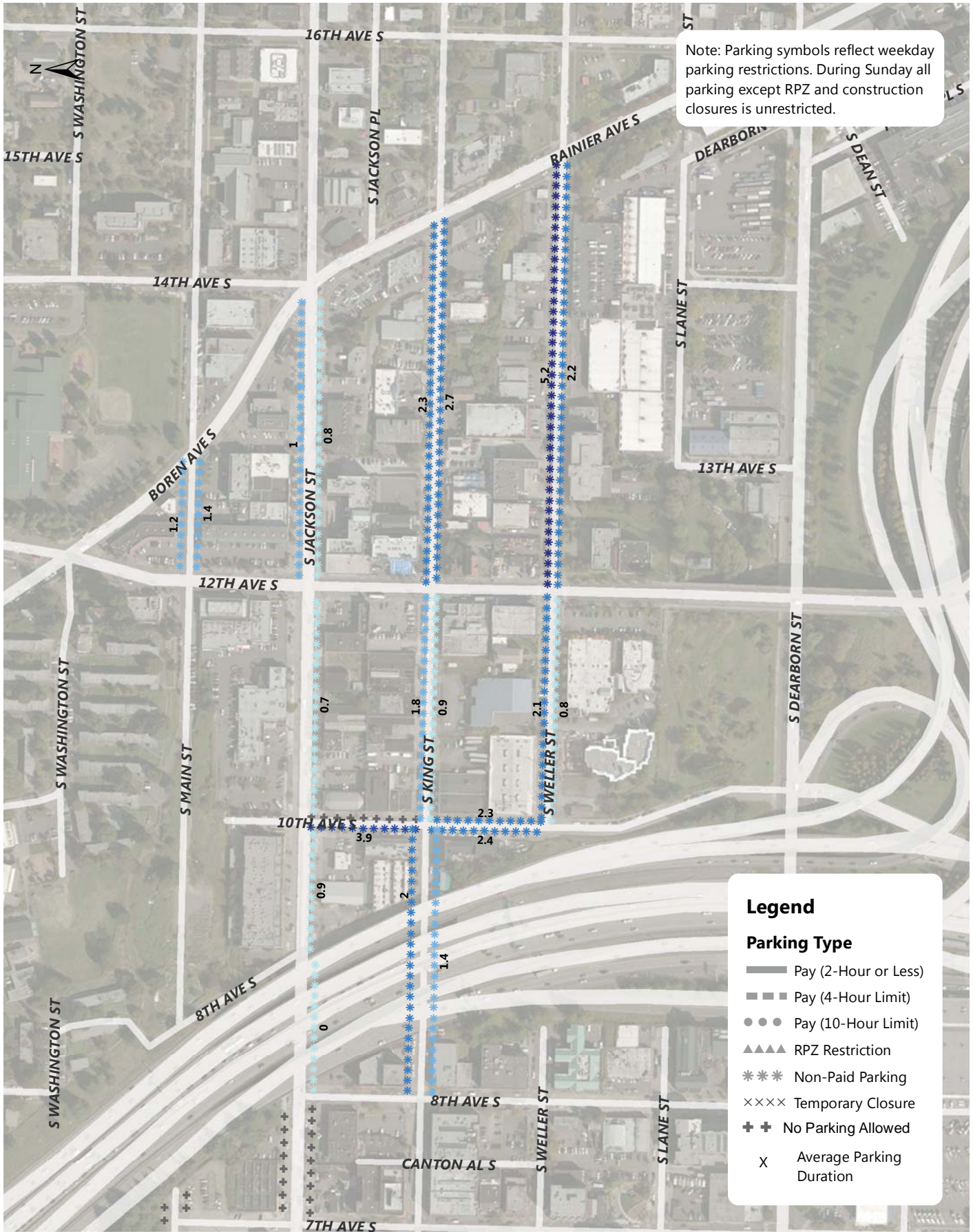




Little Saigon Sunday Parking Occupancy 7PM Occupancy of Each Blockface

Annual Parking Study - Spring 2014





Little Saigon Sunday Average Parking Duration (8AM - 8PM)

Annual Parking Study - Spring 2014