

# Central Ridge Neighborhood Greenway Most Promising Route

## WELCOME

Please sign in, learn more about the most promising route, and talk with us.

### TELL US WHAT YOU THINK

Take our online survey through August 20:

[www.seattle.gov/transportation/ridgegreenway.htm](http://www.seattle.gov/transportation/ridgegreenway.htm)

### CONTACT

Dan Anderson

centralridge@seattle.gov

(206) 684-8105

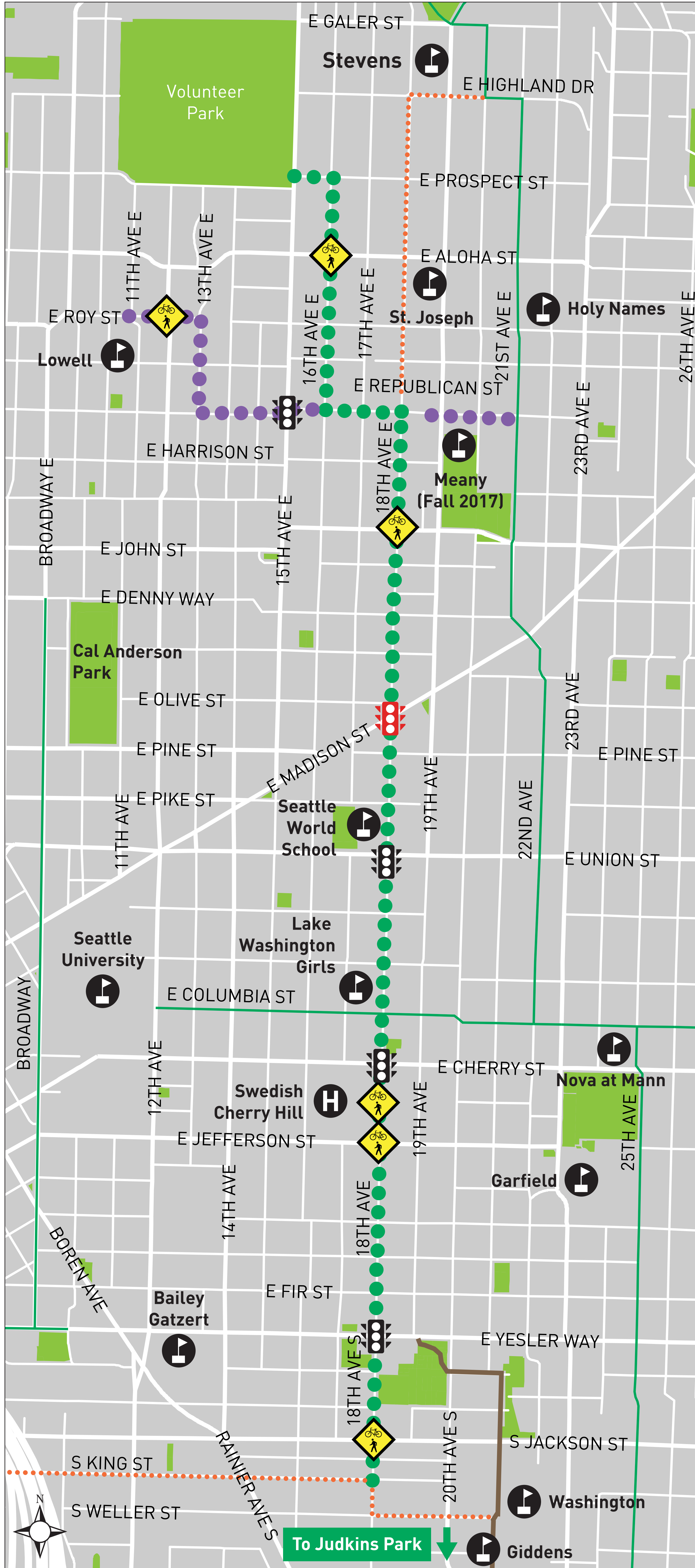


Seattle  
Department of  
Transportation




The Levy to  
**MOVE SEATTLE**



# MOST PROMISING ROUTE



## LEGEND

- Most promising route
-  Proposed crossing signal
-  Proposed crossing improvement at an existing signal
-  Proposed crossing improvement
- Safe Routes to School connection
- Future family-friendly\* route
- Existing family-friendly\* route
- Central Park Trail

\*Family-friendly routes include paths, neighborhood greenways, and protected bike lanes



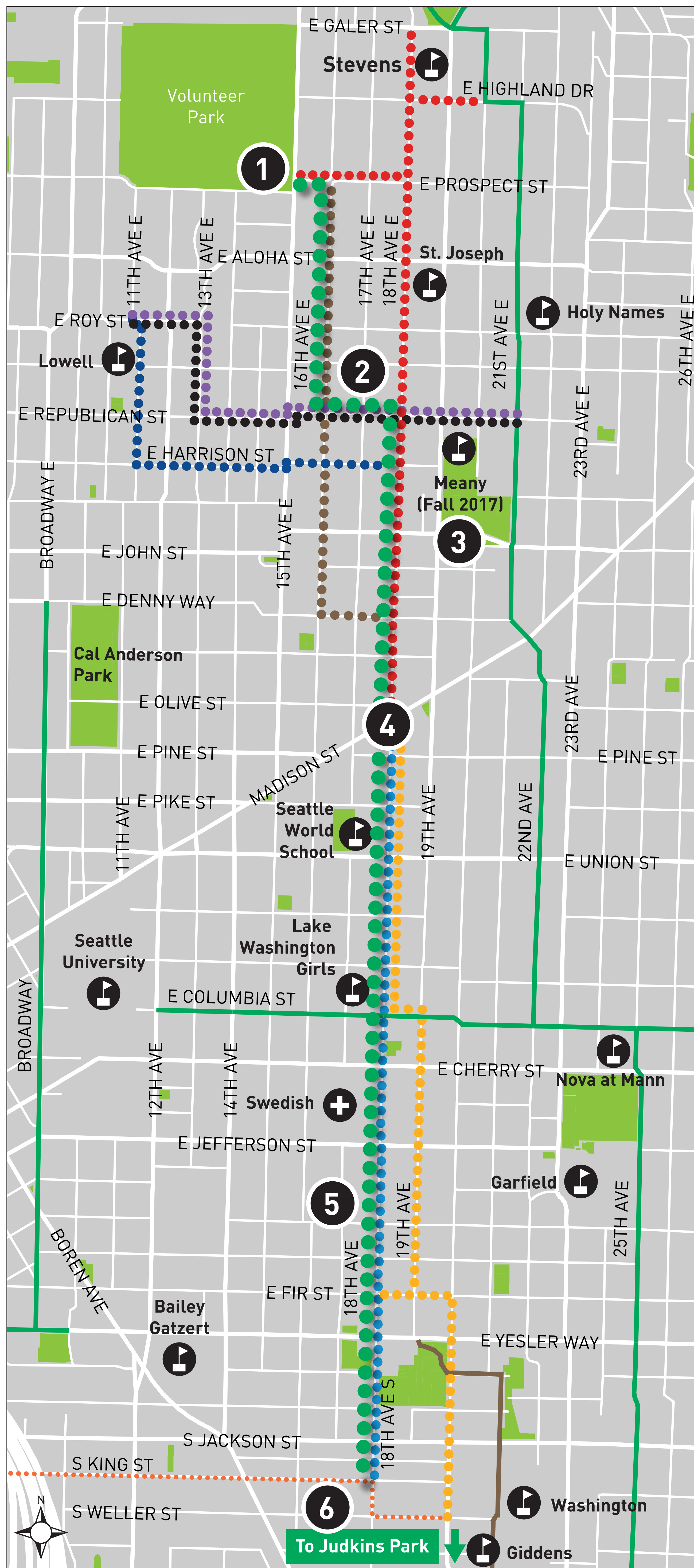
Seattle  
Department of  
Transportation

The Levy to  
**MOVE SEATTLE**



# WHAT WE HEARD

## ROUTE AND DESTINATION FEEDBACK



### LEGEND

- Existing family-friendly\* route
- North route option 1
- North route option 2
- Lowell-Meany route option 1
- Lowell-Meany route option 2
- South route option 1
- South route option 2
- Most promising Safe Routes to School connection
- Most promising route
- - - - Future family-friendly\* route
- Central Park Trail

\*Family-friendly routes include paths, neighborhood greenways, and protected bike lanes.

- 1 Popular destination:** Volunteer Park (74%, #1 North)
- 2 Popular north route:** Hybrid of 18th Ave E & 16th Ave E to connect to popular destinations
- 3 Construction ahead:** Meany Middle to open in fall 2017
- 4 New crossing signal at 18th Ave & E Madison St:** Support and would use this new signal (74%)
- 5 Popular south route:** 18th Ave (47%)
- 6 Popular destination:** Places south of Judkins Park (62%, #1 South)

## GENERAL FEEDBACK

### Walk route priorities:

- Shortest distance
- Safest crossings of busy streets
- High quality pedestrian facilities

### Bike route priorities:

- High quality bike facilities
- Least hills
- Least traffic

### Neighborhood bike routes today:

Dissatisfied (33%)

**WHAT'D WE MISS? LET US KNOW.**



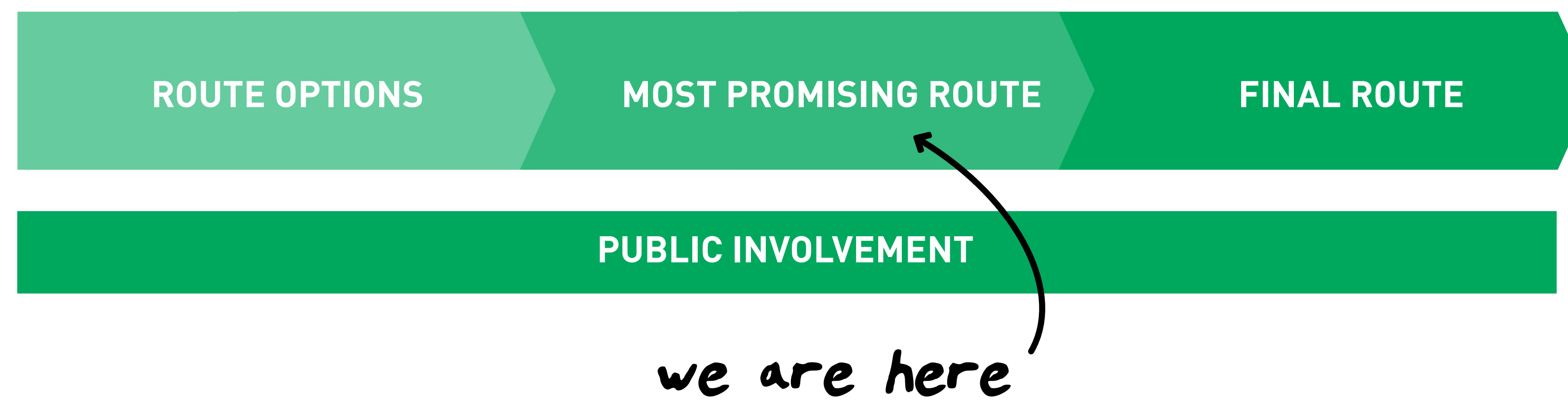
Seattle  
Department of  
Transportation

The Levy to

**MOVE SEATTLE**



# PLANNING PROCESS



## Selecting the most promising route:

|   | NORTH OPTIONS           |                         |              |
|---|-------------------------|-------------------------|--------------|
|   | Option 1:<br>16th Ave E | Option 2:<br>18th Ave E | Hybrid route |
| <b>1. SAFETY</b>                            |                         |                         |              |
| Vehicle volume and type                     | ▲                       | ●                       | ●            |
| Traffic speed                               | ●                       | ●                       | ●            |
| Collision history                           | ▲                       | ●                       | ●            |
| Arterial crossings                          | ●                       | ▲                       | ▲            |
| <b>2. ROUTE CONDITIONS</b>                  |                         |                         |              |
| Steepness of hills                          | ●                       | ▲                       | ●            |
| Directness and continuity                   | ▲                       | ●                       | ▲            |
| Condition of street, drainage, and sidewalk | ■                       | ▲                       | ▲            |
| <b>3. COMMUNITY</b>                         |                         |                         |              |
| Public support                              | ▲                       | ●                       | ●            |
| Access to schools and transit               | ▲                       | ▲                       | ▲            |
| Neighborhood destinations                   | ●                       | ▲                       | ●            |
| <b>SUMMARY</b>                              |                         |                         |              |
| ● = 10 points                               | 4                       | 5                       | 6            |
| ▲ = 5 points                                | 5                       | 5                       | 4            |
| ■ = 0 points                                | 0                       | 0                       | 0            |
| <b>TOTAL POINTS</b>                         | <b>65</b>               | <b>75</b>               | <b>80</b>    |

*Winner! Combining options 1 and 2 gave us the best route in the north end*

|   | SOUTH OPTIONS         |   |
|---|-----------------------|---|
|   | Option 1:<br>18th Ave | Option 2:<br>19th Ave, E Fir St, 20th Ave |
| <b>1. SAFETY</b>                            |                       |   |
| Vehicle volume and type                     | ▲                     | ■   |
| Traffic speed                               | ▲                     | ■   |
| Collision history                           | ●                     | ▲   |
| Arterial crossings                          | ▲                     | ▲   |
| <b>2. ROUTE CONDITIONS</b>                  |                       |   |
| Steepness of hills                          | ▲                     | ▲   |
| Directness and continuity                   | ●                     | ▲   |
| Condition of street, drainage, and sidewalk | ▲                     | ▲   |
| <b>3. COMMUNITY</b>                         |                       |   |
| Public support                              | ●                     | ▲   |
| Access to schools and transit               | ●                     | ▲   |
| Neighborhood destinations                   | ●                     | ●   |
| <b>SUMMARY</b>                              |                       |   |
| ● = 10 points                               | 5                     | 1   |
| ▲ = 5 points                                | 5                     | 7   |
| ■ = 0 points                                | 0                     | 0   |
| <b>TOTAL POINTS</b>                         | <b>75</b>             | <b>45</b>                                 |

*Winner!*

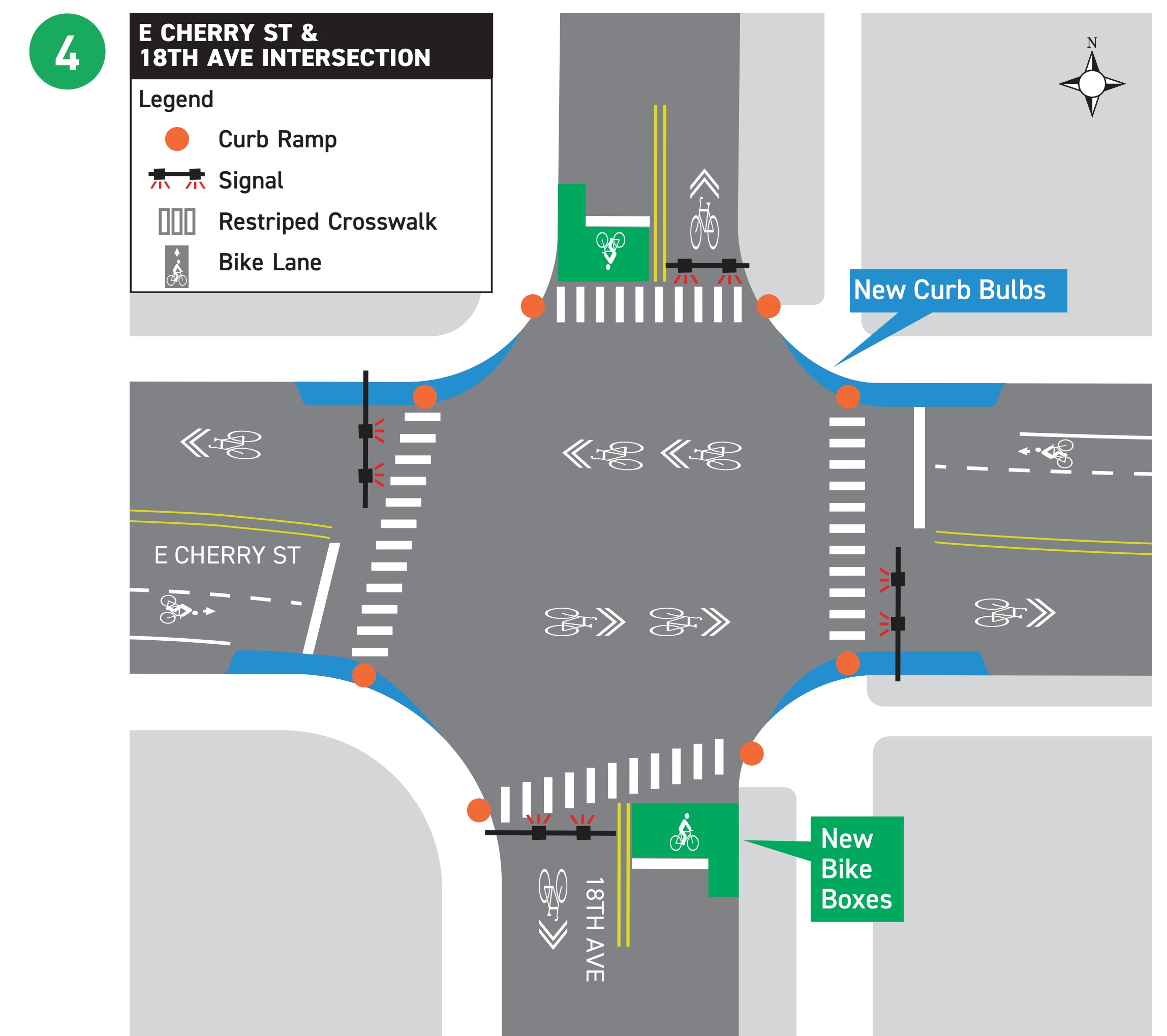
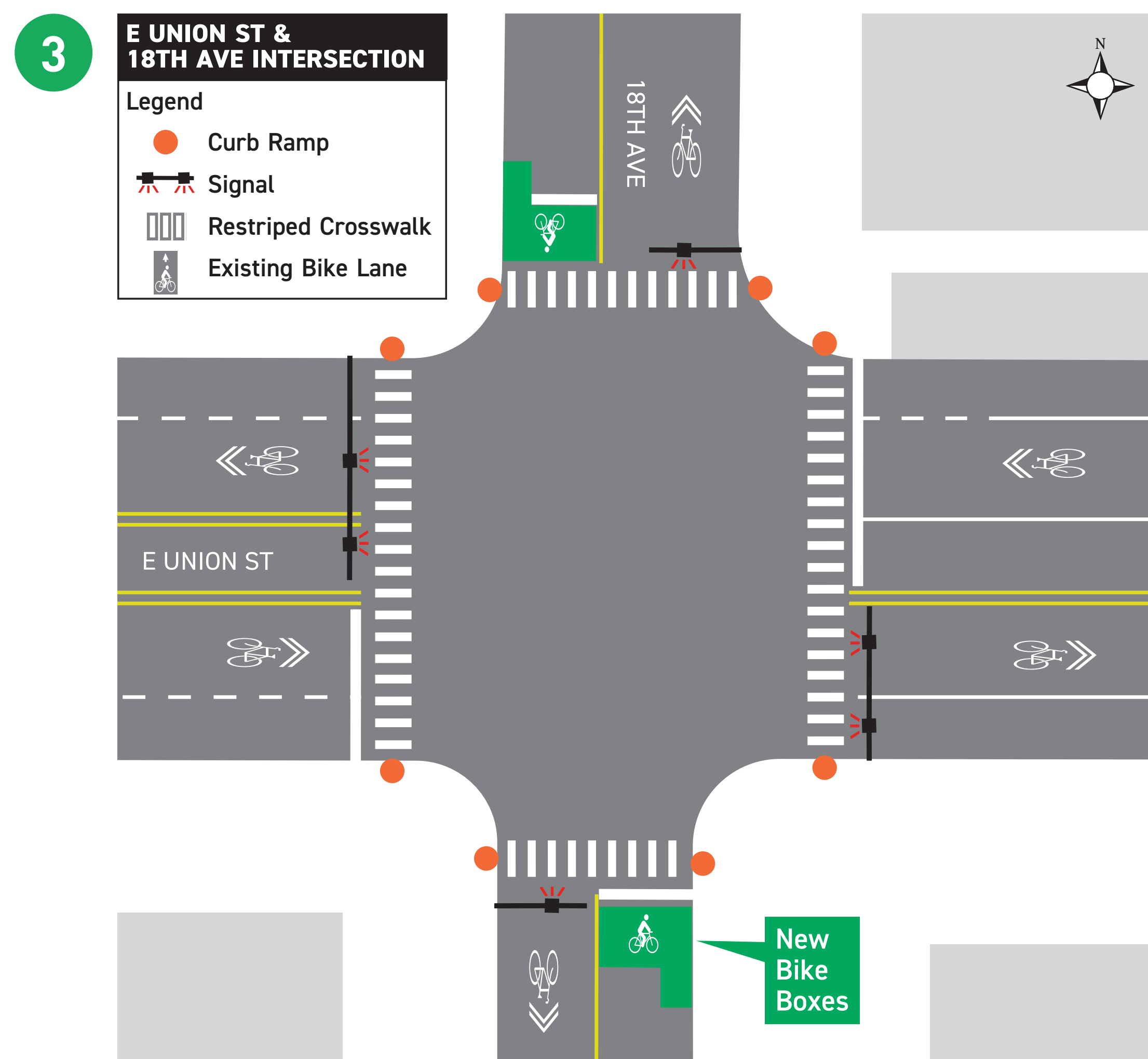
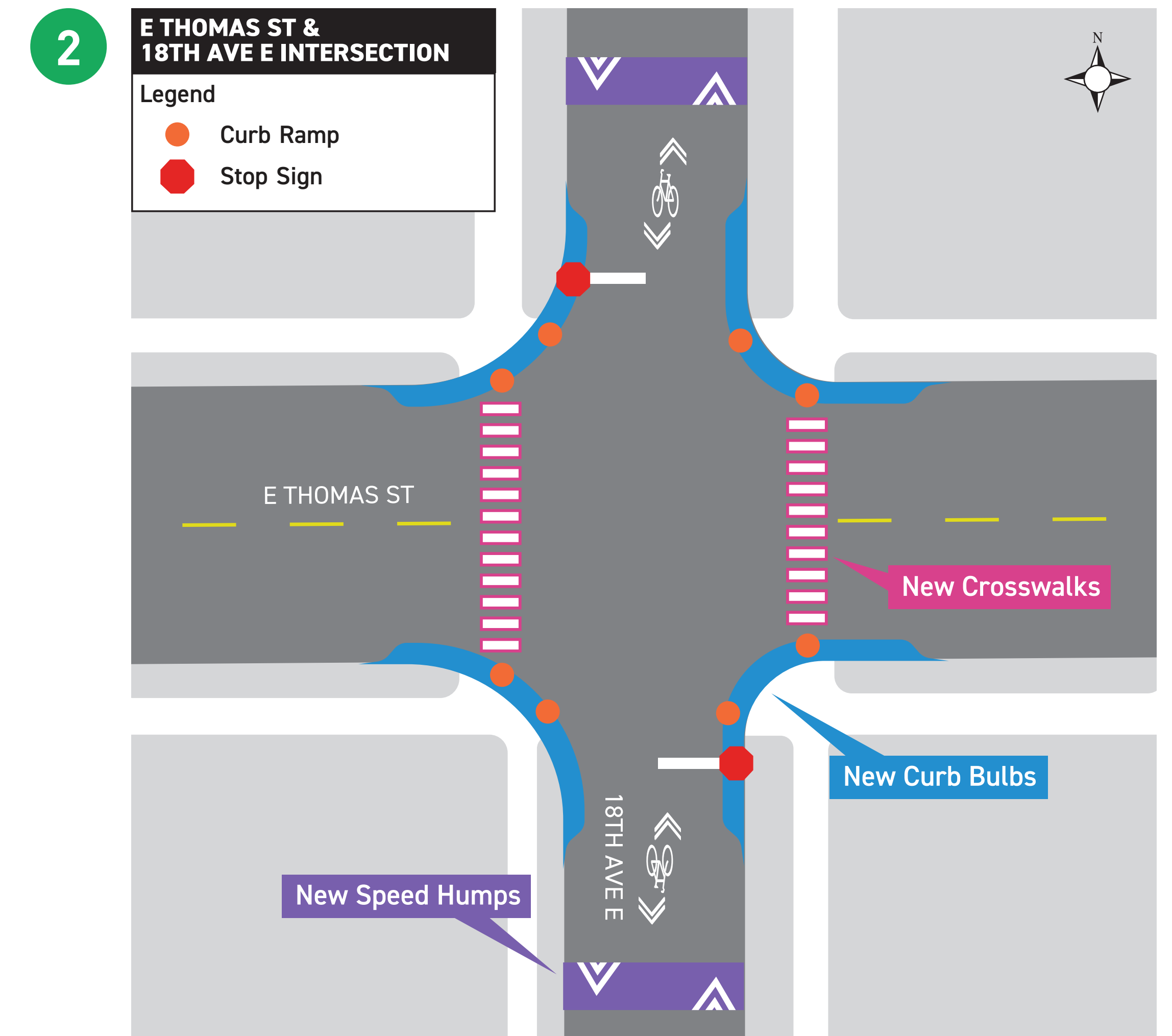
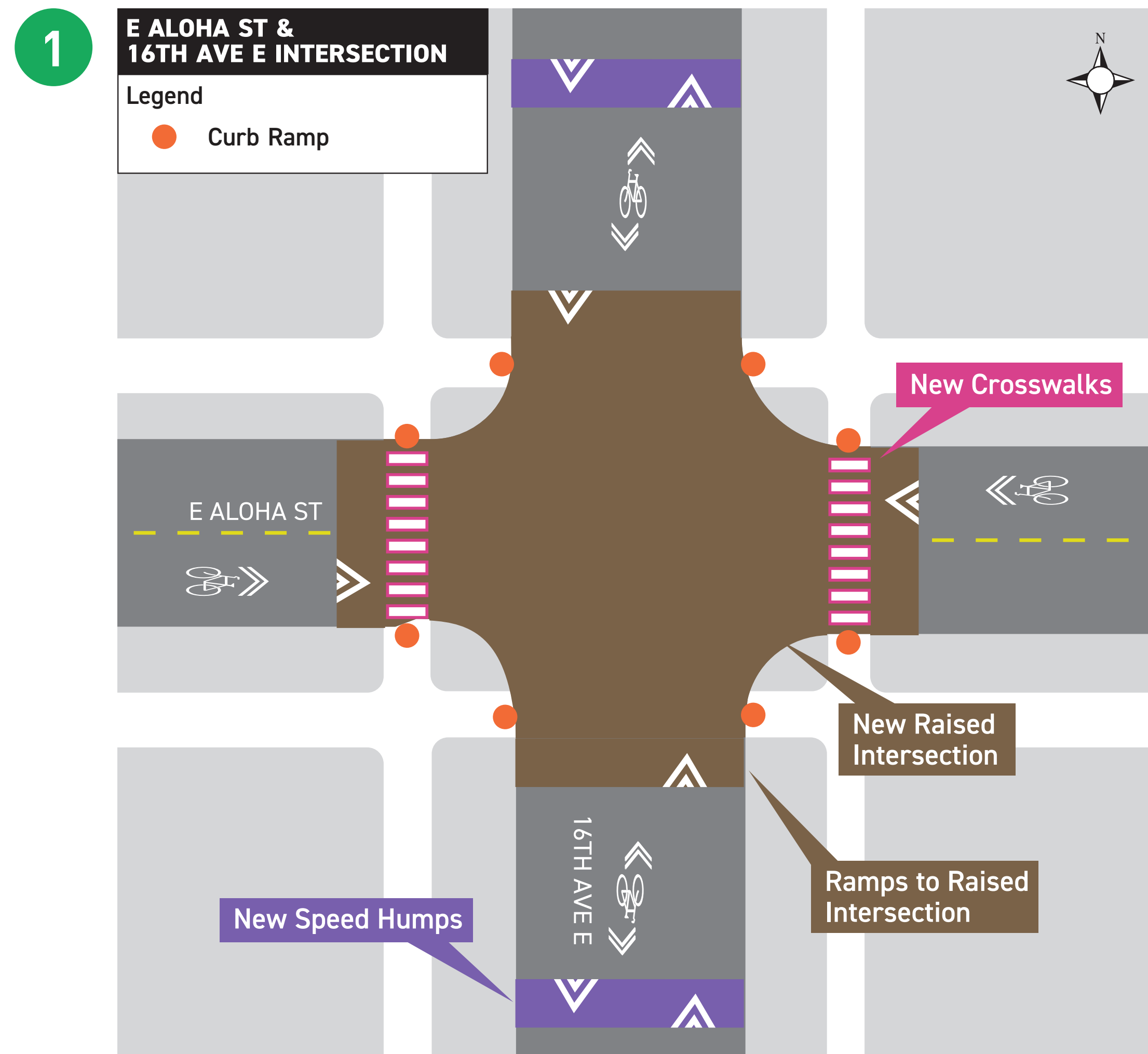
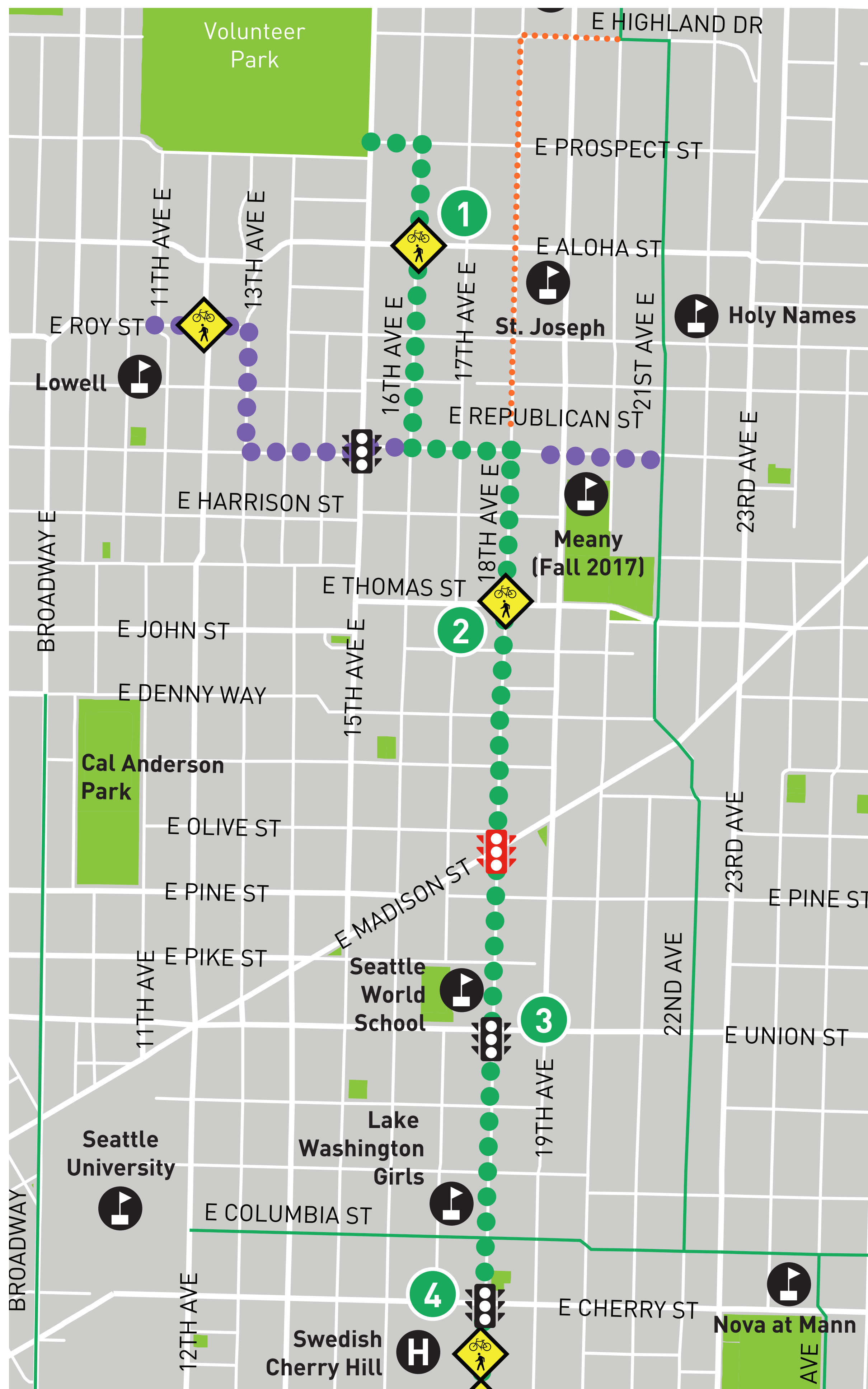


Seattle  
Department of  
Transportation



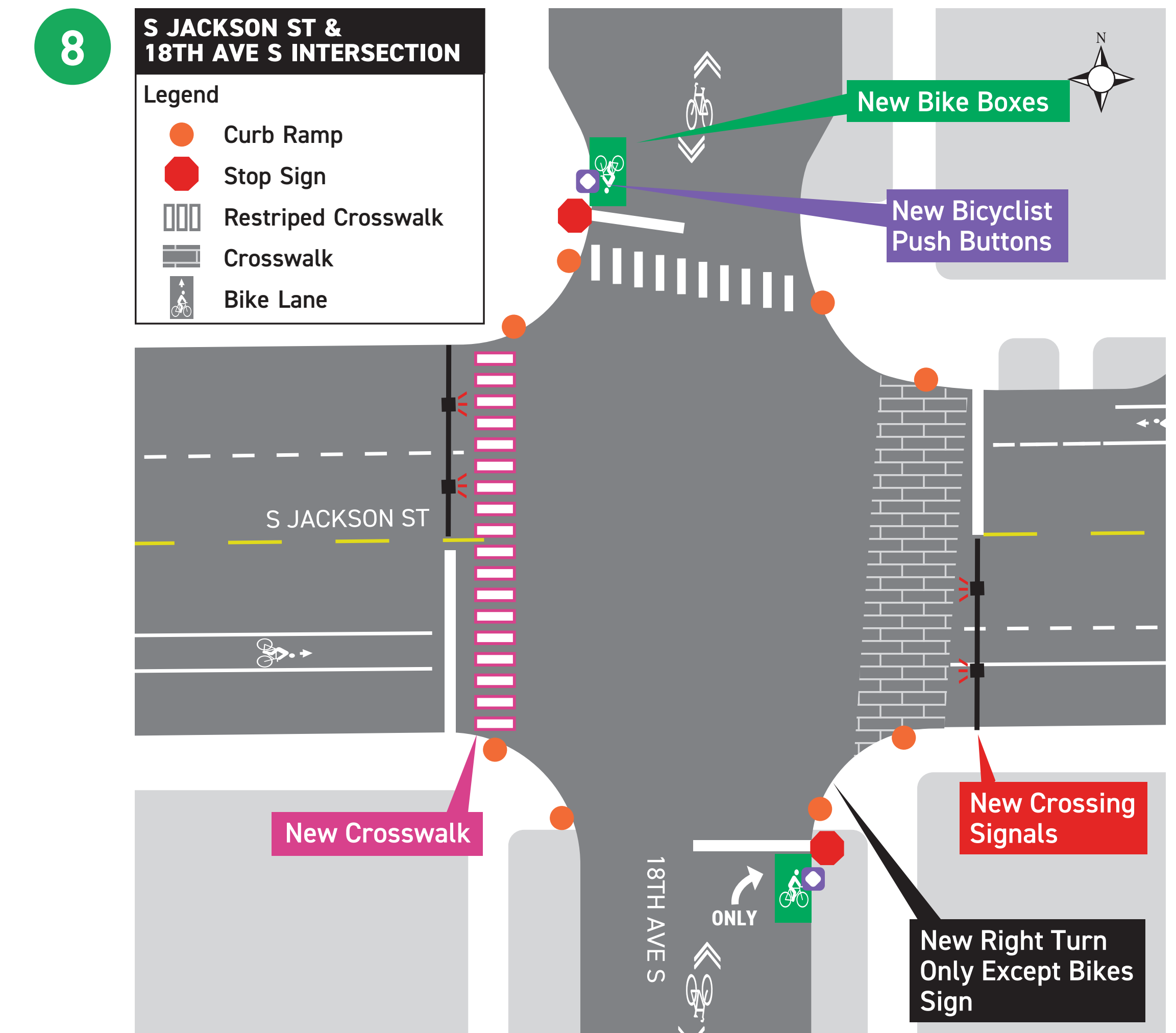
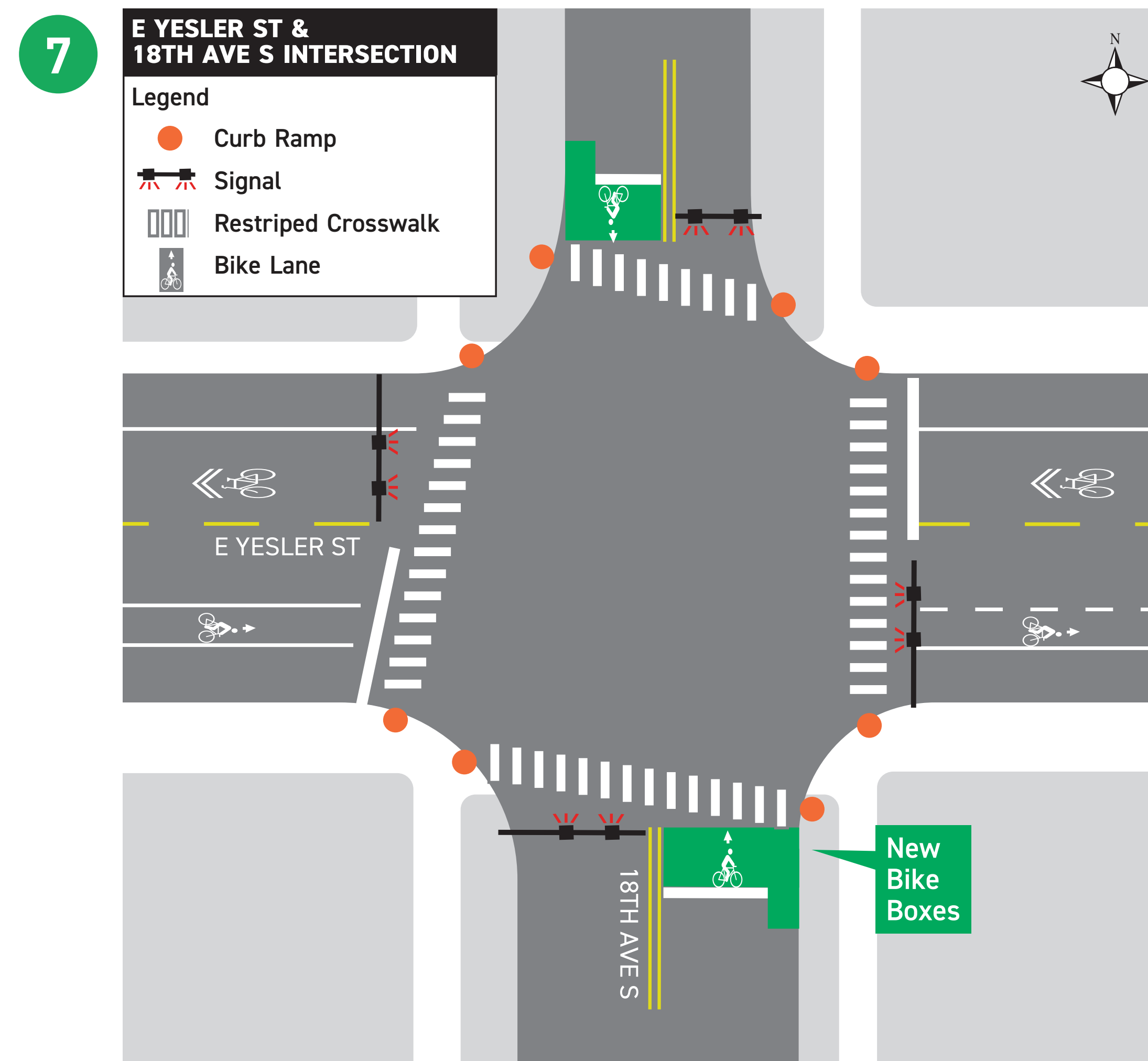
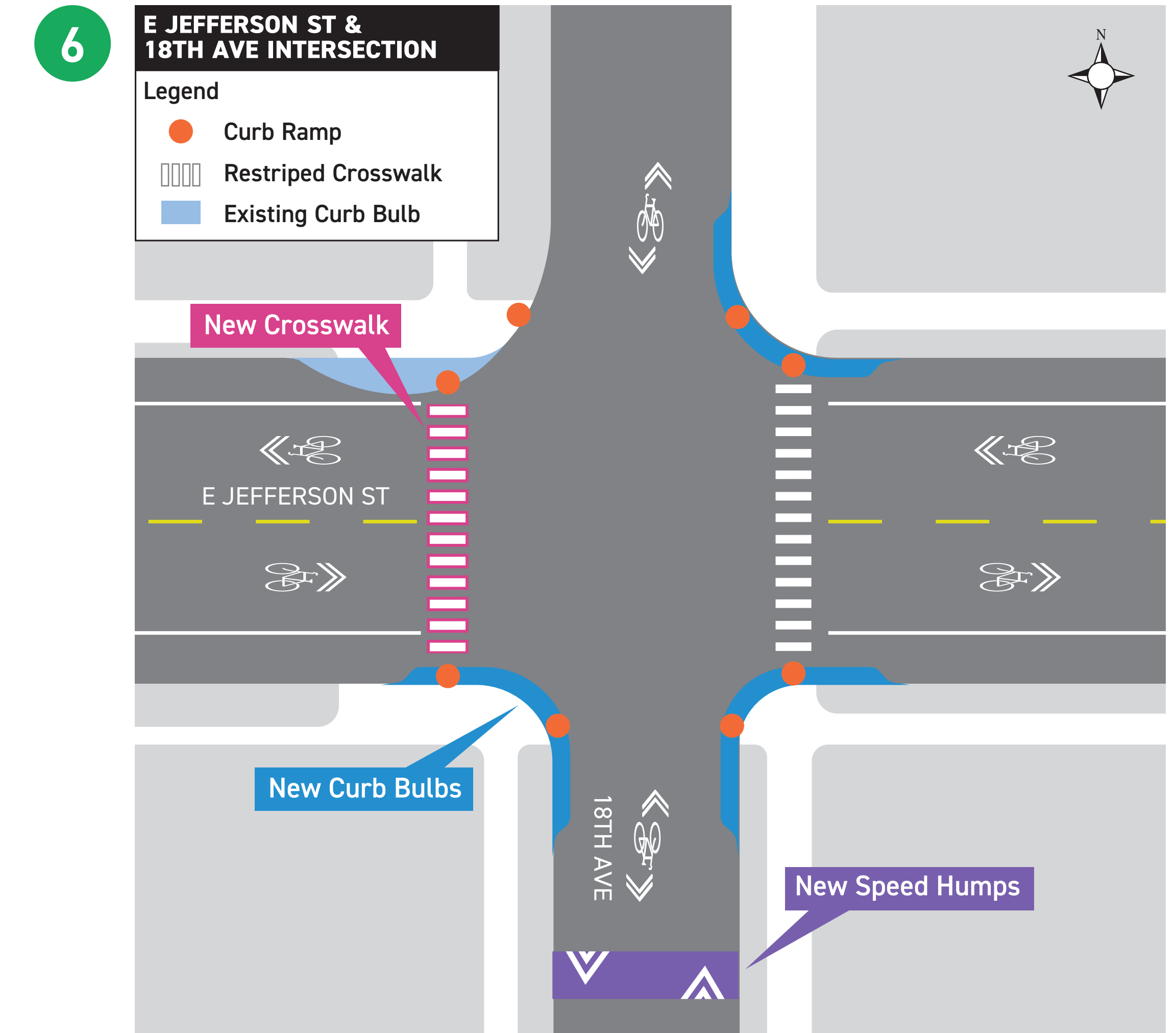
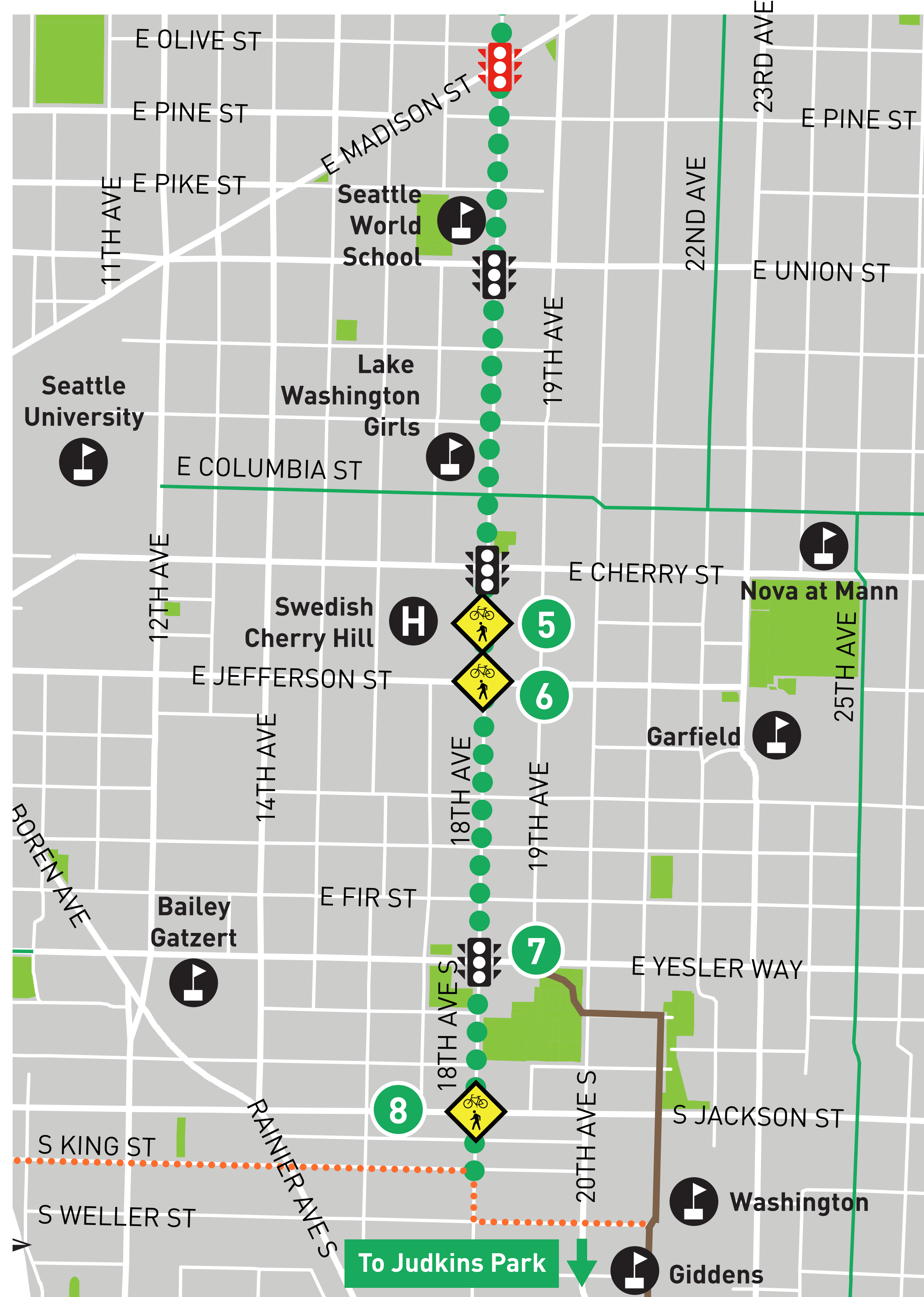
# NORTH AND CENTRAL - INTERSECTION IMPROVEMENTS

Tell us which option you prefer for intersections 1, 3, and 4 in our survey



# SOUTH - INTERSECTION IMPROVEMENTS

Tell us which option you prefer for intersections 7 and 8 in our survey



# 18TH AVE & E MADISON ST

