

# BALLARD BRIDGE PLANNING STUDY

## SEATTLE DEPARTMENT OF TRANSPORTATION

### THE BALLARD BRIDGE

The Ballard Bridge, built in 1917, spans the eastern edge of the Salmon Bay and connects Ballard to Magnolia, Queen Anne, and Downtown via Interbay. Today the 2,854-foot bridge carries more than 57,000 vehicles per day across the Lake Washington Ship Canal. Over the last century, while the look and function of the bridge may not have changed much, we've been retrofitting and maintaining the structure to keep it moving and safe, including a recent series of seismic improvements completed in 2014.



Ballard Bridge Facing North (1956) - King County Municipal Archives



Ballard Bridge (1957) - King County Municipal Archives



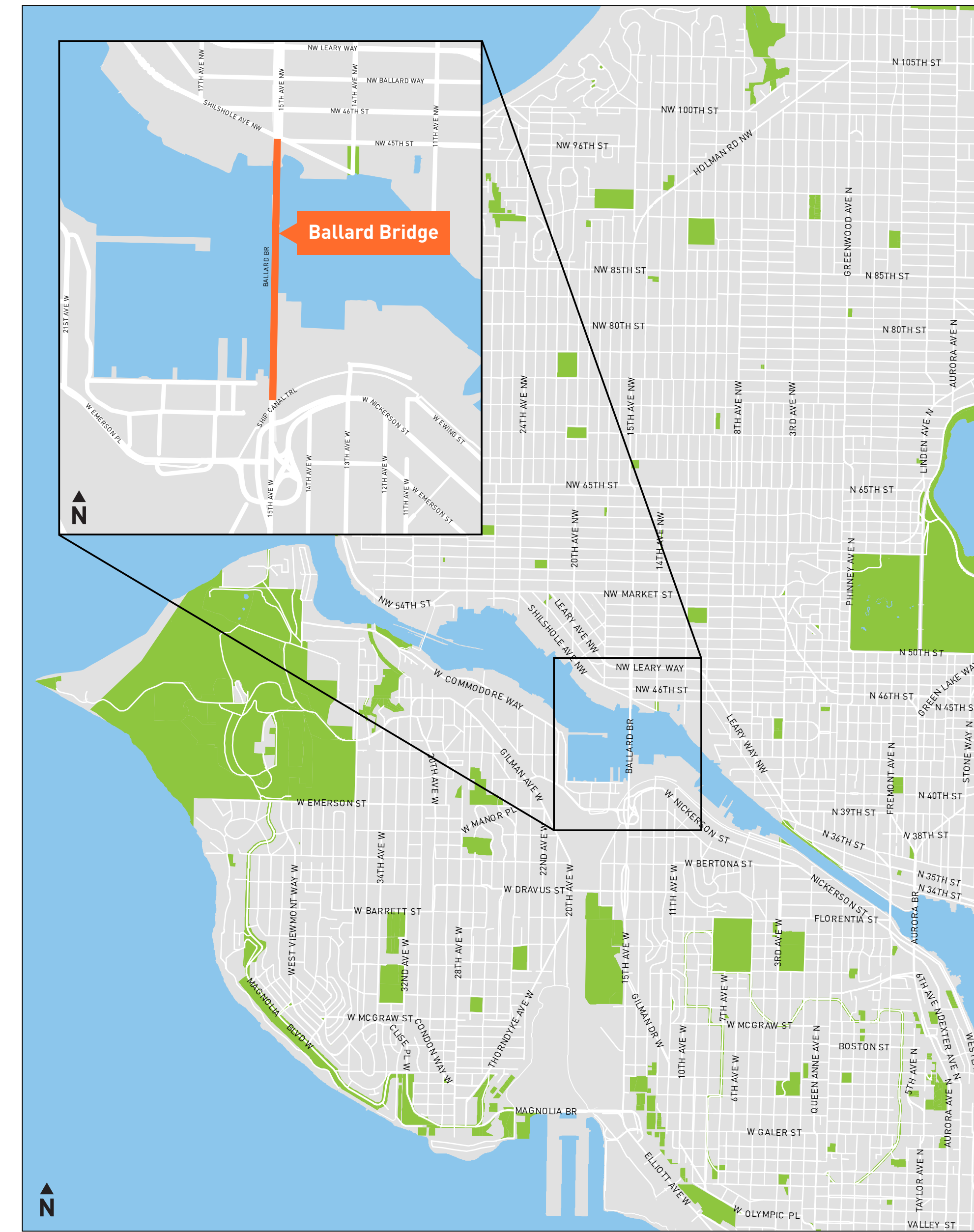
Ballard Bridge Facing East

### PROJECT OVERVIEW

We've launched the Ballard Bridge Planning Study to evaluate how to bring the bridge up to current transportation, functional, and structural standards including improved bicycle and pedestrian facilities and keeping buses and freight moving. While we perform regular maintenance and frequent inspections on the bridge to ensure it's operational and safe for road and marine traffic, due to the age of the structure, more significant rehabilitation may be needed. Since the bridge is in good condition today, we have an opportunity to plan.

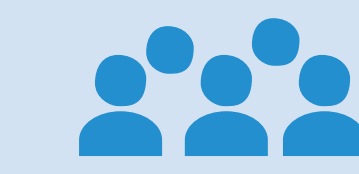
The Ballard Bridge Planning Study, funded by the Levy to Move Seattle, will explore feasible rehabilitation and replacement options for the long-term future of the bridge. It is the second of ten studies to help us assess and manage roadway structure maintenance needs and maximize future investments.

The planning study identifies associated costs, risks, benefits, and trade-offs of each option. Through the end of the year, we'll work with our agency partners, advisory boards, and community members to identify needs and values and propose options that meet them.



### WE HEARD FROM YOU

To ensure we develop bridge options that incorporate the broad needs and values of the community and people using the Ballard Bridge, we conducted an online survey on current and desired bridge use.



**2,808** survey participants



The majority of respondents selected improvements for **people walking and biking as their top priority**



**72%** of respondents said they travel across the bridge by car at least once a week



**Over 370** respondents said they rely on the bridge as part of their job\*

Attend the upcoming drop-in session to learn more!

\*Not including their commute



## UPCOMING DROP-IN SESSION

Wednesday, July 31 | 6 PM—7:30 PM  
Fishermen's Terminal  
Seattle Fishermen's Memorial —Dock 7  
3919 18th Ave W, Seattle, WA 98119



We are hosting a drop-in session and hope you can join us. The drop-in session is a good opportunity to learn about the Ballard Bridge Planning Study and to talk to the project team about your priorities and preferences. We'll be sharing information about the project scope, goals, and timeline, as well as a summary of the feedback we received from our online community survey. You can drop-in any time between 6 PM—7:30 PM. **We look forward to seeing you there!**

Visit our web page [www.seattle.gov/transportation/BallardBridge](http://www.seattle.gov/transportation/BallardBridge) to sign up for email alerts.

### PROJECT TIMELINE

PLANNING STUDY PROCESS		2019			
		Spring	Summer	Fall	Winter
	<b>Stakeholder Meetings:</b> with agency and community partners including Sound Transit, Port of Seattle, BNSF, and adjacent BIRMGID and community organizations				
	<b>Advisory Board Briefings:</b> to involve and seek assistance from Bike, Pedestrian, Transit, and Freight advisory boards				
	<b>Online Survey:</b> to introduce the project scope and schedule and to better understand behaviors for users of the Ballard Bridge				
	<b>Drop-in Sessions &amp; Community Events:</b> to describe the Ballard Bridge history, review evaluation process, present analyses, and collect community input				
	<b>Community Councils &amp; Other Community Group Briefings:</b> to inform the public of the study purpose and progress, and to provide more opportunities for community comments and questions				
	<b>Finalize Alternatives Analysis and Share Results:</b> with SDOT directors, the Mayor, and our local, county, and state elected officials				

Subject to change

We'll continue to share information and work with our agency partners, advisory boards, and community members as we move through the process.

#### Need a Translation?

If you need this information translated, please call 206-775-8894. Servicios de traducción e interpretación disponibles bajo petición 206-775-8894. Matutulongan ka naming maintindihan kung hihingi kang tulong 206-775-8894.

요청하시면 번역이나 통역을 제공해드립니다 206-775-8894. Dich và thông dịch viên sẵn sàng nếu có sự yêu cầu 206-775-8894. Haddii aad dooneyso turjubeen fadlen wac 206-775-8894.