

# Northgate Pedestrian and Bicycle Bridge Open House

---

June 3, 2014

---

Event Summary



Prepared by:



## TABLE OF CONTENTS

Overview.....	3
Event Information .....	3
Event Notification .....	4
Mailer .....	5
Email Notification .....	6
Project Website.....	6
Community Calendars .....	6
Open House .....	7
Project Representatives .....	7
Materials .....	8
Comment Forms .....	8
Online Media Coverage .....	9
What We Heard .....	10
Open House Materials .....	11

## OVERVIEW

### Background

The Northgate Pedestrian and Bicycle Bridge across Interstate 5 (I-5) in Seattle's Northgate neighborhood will provide area residents and visitors with easier access to the businesses, transit facilities, schools, and community amenities on both sides of the freeway.

Currently, I-5 stands as a barrier separating communities on its east and west sides. The proposed bridge will be built in the vicinity of NE 100<sup>th</sup> and NE 103<sup>rd</sup> streets, will be up to 2,200 feet in length, and has been long desired by the Maple Leaf, Licton Springs and Bitter Lake communities as well as by nearby businesses and North Seattle College. This area is rapidly changing into a walk, bike and transit community as the city, King County, and Sound Transit make investments there.

Prior to final decisions on design, SDOT hosted an open house on June 3, 2014, for the public to learn about the project, meet the project team, ask questions, and provide comments.

### Objectives

Objectives of the open house were to:

- Raise public understanding about the project's purpose, need, and benefits
- Provide an update on the program's elements and schedule
- Introduce the project team
- Emphasize commitment to working with stakeholders and the broader community
- Provide opportunities for the public to comment on possible routes and bridge types and to get questions answered

## EVENT INFORMATION

Event:	Northgate Pedestrian and Bicycle Bridge Open House
Host:	Seattle Department of Transportation
Date & Time:	Tuesday, June 3, 2014 5:30 – 7:30 pm
Presentation:	6:00 pm
Location:	Olympic View Elementary School Auditorium 504 NE 95 <sup>th</sup> Street Seattle, WA 98115

## EVENT NOTIFICATION

SDOT conducted outreach in the weeks leading up to the open house to notify stakeholders and the general public of the open house. The table below provides a summary:

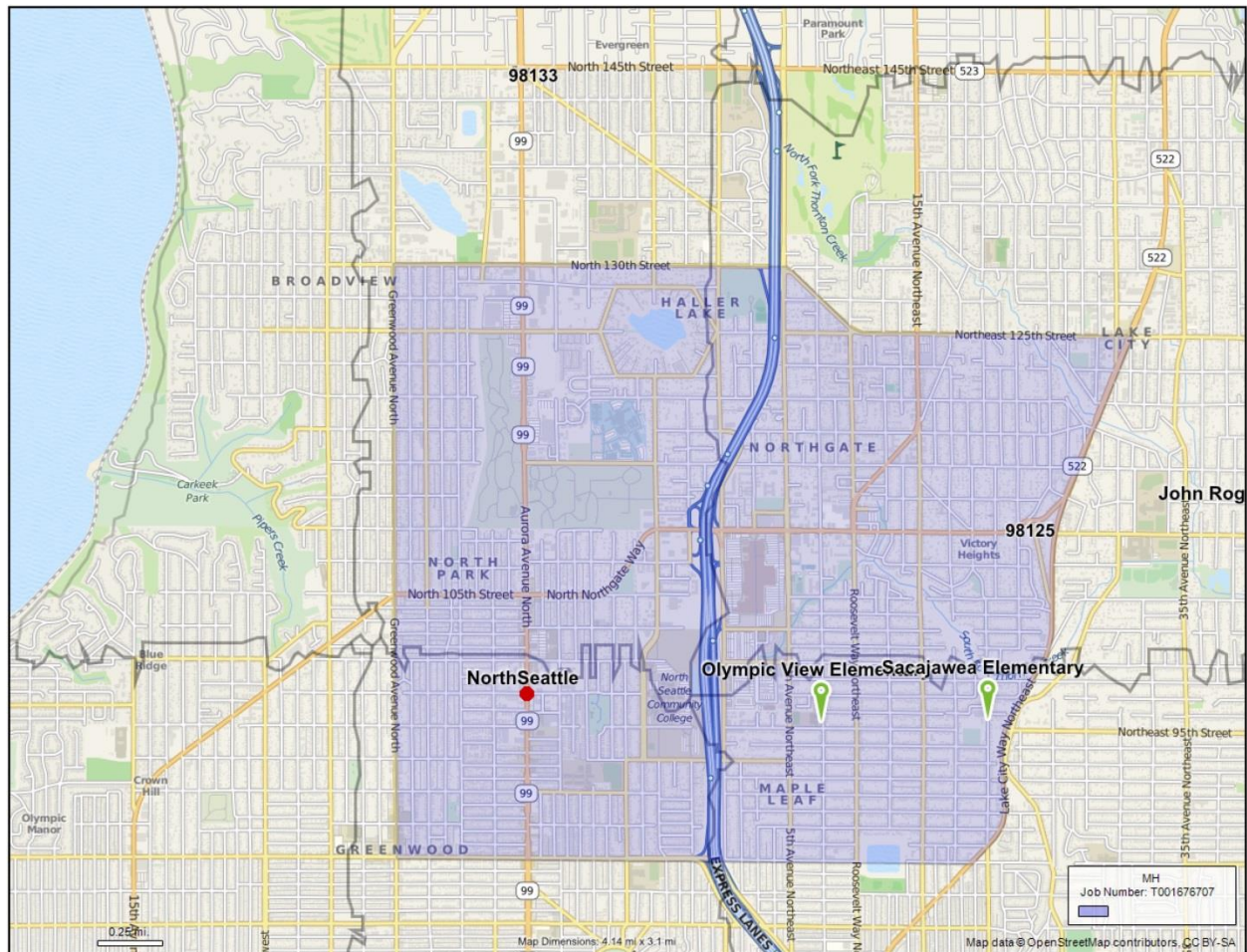
Outreach Tool	Recipients
Mailer	Over 23,000
Email notification	26 individually sent stakeholder emails
Project website	
Community calendars	Posted on 10 online calendars

These outreach efforts are discussed in greater detail on the following pages.



## MAILER

The mailer publicizing the open house was an 8.5" x 5.5" postcard. It was sent to 23,690 residences and businesses in the area bounded by N 130<sup>th</sup> Street/NE 125<sup>th</sup> Street on the north, N/NE 85<sup>th</sup> Street on the south, Greenwood Avenue N on the west and Lake City Way NE on the east:



## EMAIL NOTIFICATION

An announcement of the open house was emailed to nearby organizations and stakeholders. Recipients included community councils, social service and other non-profit organizations, schools, churches, and businesses. Bicycling and pedestrian advocacy organizations were also included in the notification.

## WEBSITE

The project website (<http://www.seattle.gov/transportation/northgatepedbridge.htm>) went live in February 2014. Leading up to the open house, it included background materials such as a King County feasibility study and a Seattle Department of Planning and Development report on focus group findings, a project area map, project presentations to the Seattle Pedestrian Advisory Board and the Seattle Bike Advisory Board, a project fact sheet, bridge proposals, a timeline, an open house invitation, and contact information. Following the open house, the website was updated with the open house presentation and all supporting materials (i.e., display boards and project folio).

## COMMUNITY CALENDARS

Notice of the open house was posted in 10 online event calendars leading up to the event, reaching the audiences of a variety of neighborhood blogs and interest groups:

Name	Type	URL
Haller Lake Community Club	Neighborhood Newsletter	<a href="http://www.hallerlake.info/community/community-happenings/">www.hallerlake.info/community/community-happenings/</a>
Lifton Springs Community Council	Newsletter	<a href="http://www.liftonsprings.org/council/currents_newsletter/currents_jun_2014.pdf">www.liftonsprings.org/council/currents_newsletter/currents_jun_2014.pdf</a>
Pinehurst	Community Newsletter	<a href="http://www.pinehurstseattle.org/category/northgate/northgate-pedestrian-bridge">www.pinehurstseattle.org/category/northgate/northgate-pedestrian-bridge</a>
Thornton Creek Alliance	Community Calendar	<a href="http://www.thornton-creek-alliance.org/?page_id=4">www.thornton-creek-alliance.org/?page_id=4</a>
Northgate Community Center	Facebook post	<a href="https://www.facebook.com/63872737623/photos/a.385271412623.170342.63872737623/10152053625222624/?type=1&amp;theater">www.facebook.com/63872737623/photos/a.385271412623.170342.63872737623/10152053625222624/?type=1&amp;theater</a>
Feet First	Website Calendar	<a href="http://www.feetfirst.org/events/northgate-pedestrian-bridge-open-house">www.feetfirst.org/events/northgate-pedestrian-bridge-open-house</a>
Seattle Bike Blog	Interest Group Blog	<a href="http://www.seattlebikeblog.com/ai1ec_event/northgate-pedestrian-bridge-meeting/">www.seattlebikeblog.com/ai1ec_event/northgate-pedestrian-bridge-meeting/</a>
Seattle Neighborhood Greenways	Events Calendar	<a href="http://seattlegreenways.org/events/calendar/">seattlegreenways.org/events/calendar/</a>
Maple Leaf Community Council	Facebook post	<a href="https://www.facebook.com/MapleLeafCC">www.facebook.com/MapleLeafCC</a>
Greenwood Community Council	Newsletter	<a href="http://www.greenwoodcommunitycouncil.org/">www.greenwoodcommunitycouncil.org/</a>

## OPEN HOUSE

The open house drew more than 70 area residents and business people, as well as representatives of neighborhood organizations and bike and pedestrian advocacy groups.

Fourteen display boards arranged around the perimeter of the room welcomed attendees to the event, surveyed where people lived in relation to the project area, and provided information about pedestrian bridge options, selection criteria, the project timeline, and how to contact the project with questions and comments. A presentation was given, followed by a brief question and answer period.



The presentation began with an overview by Barbara Lee, SDOT's Project Manager, of SDOT's goals, missions and values, and previewed the purpose and need for the project. Next, Stephen Van Dyck, an architect on the project, reviewed the various walk times, bridge types and approaches that are under consideration. David McMullen, an engineer on the project, presented how the various approaches and spans would be analyzed and screened. Finally, Art Brochet reviewed the outreach process to date and next steps. Art opened the floor to questions and there were questions on a wide range of topics, but many focused on pedestrian and bicycle connections off the bridge and safety concerns.

Comment forms, and a box for collecting them, were set up at the sign-in table. A project brochure was also available. In addition, three models of the potential bridge design offered attendees an exciting opportunity to engage with the project.

## PROJECT REPRESENTATIVES

- Art Brochet, Seattle Department of Transportation
- Carl Gao, Seattle Department of Transportation
- Sandy Gurkewitz, Seattle Department of Transportation
- Michael James, Seattle Department of Transportation
- Barbara Lee, Seattle Department of Transportation
- Nick Shrope, Seattle Department of Transportation
- Fred Young, ALTA
- Sharese Graham, ESA
- Jason Lee, KPFF
- David McMullen, KPFF
- Scott Crawford, LMN Architects
- Brianna Holman, LMN Architects
- Stephen Van Dyck, LMN Architects
- Bob Derry, Stepherson & Associates
- Emily Mannetti, Stepherson & Associates
- Lauren Wheeler, Stepherson & Associates

## MATERIALS

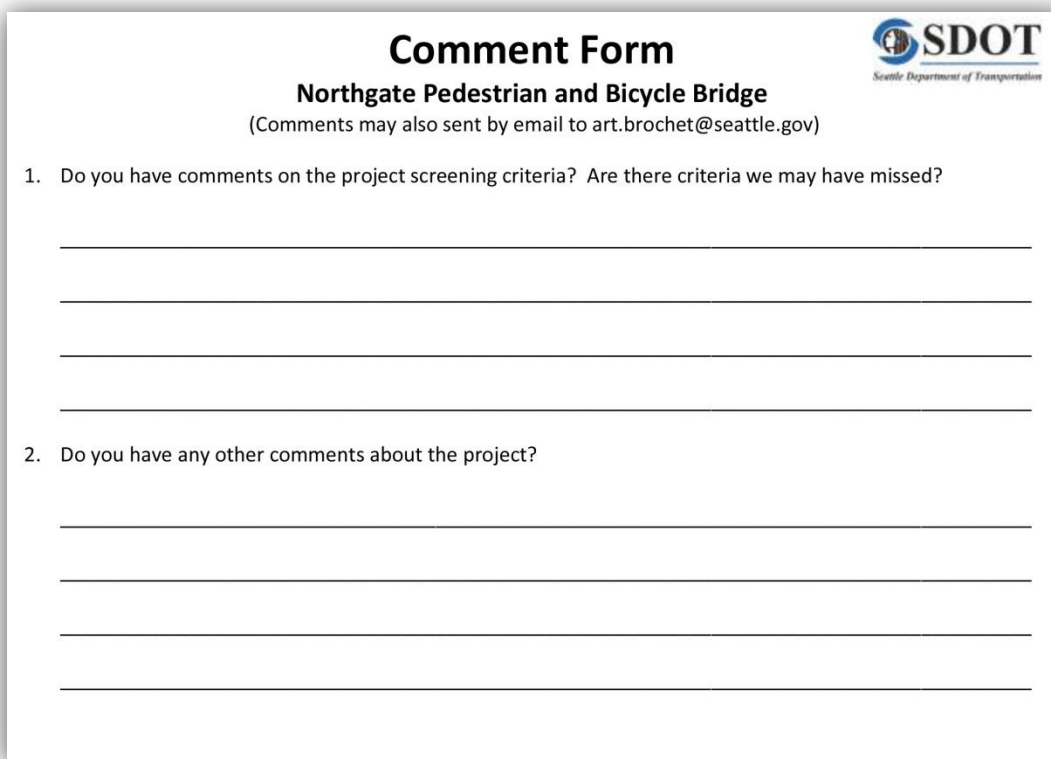
Attendees were handed the project brochure and a survey/comment form as they signed in for the open house.

Following the open house, the display boards, presentation and project brochure were posted on the project website alongside previous outreach materials and resources.

## COMMENT FORMS

Open house attendees received a printed survey/comment form upon check-in. Twenty-five forms were completed and returned at the event.


### Comment form:



**Comment Form**

**Northgate Pedestrian and Bicycle Bridge**

(Comments may also sent by email to [art.brochet@seattle.gov](mailto:art.brochet@seattle.gov))



1. Do you have comments on the project screening criteria? Are there criteria we may have missed?

\_\_\_\_\_

\_\_\_\_\_

\_\_\_\_\_

\_\_\_\_\_

2. Do you have any other comments about the project?

\_\_\_\_\_

\_\_\_\_\_

\_\_\_\_\_

\_\_\_\_\_

## ONLINE MEDIA COVERAGE

Coverage regarding the open house appeared in local online newspapers and blogs in the days leading up to and following the event:

Date	Publication	URL
5/29/14	SDOT Blog	<a href="http://www.sdotblog.seattle.gov/2014/05/29/june-3rd-open-house-for-the-northgate-pedestrian-and-bicycle-bridge">www.sdotblog.seattle.gov/2014/05/29/june-3rd-open-house-for-the-northgate-pedestrian-and-bicycle-bridge</a>
6/2/14	Seattle Bike Blog	<a href="http://www.seattlebikeblog.com/2014/06/02/support-the-northgate-bikewalk-bridge-at-tuesday-open-house-a-look-at-the-updated-concept">www.seattlebikeblog.com/2014/06/02/support-the-northgate-bikewalk-bridge-at-tuesday-open-house-a-look-at-the-updated-concept</a>
6/4/14	The Urbanist	<a href="http://www.theurbanist.org/2014/06/04/northgate-pedestrian-bridge-open-house">www.theurbanist.org/2014/06/04/northgate-pedestrian-bridge-open-house</a>
6/5/14	Seattle Transit Blog	<a href="http://www.seattletransitblog.com/2014/06/05/54624">www.seattletransitblog.com/2014/06/05/54624</a>
6/6/14	Seattle Bike Blog	<a href="http://www.seattlebikeblog.com/2014/06/06/the-northgate-bikewalk-bridge-designs-are-stunning-could-be-a-neighborhood-icon">www.seattlebikeblog.com/2014/06/06/the-northgate-bikewalk-bridge-designs-are-stunning-could-be-a-neighborhood-icon</a>
6/9/14	Curbed	<a href="http://seattle.curbed.com/archives/2014/06/iconic-bikewalk-bridge-designs-could-remake-northgate.php">seattle.curbed.com/archives/2014/06/iconic-bikewalk-bridge-designs-could-remake-northgate.php</a>

## WHAT WE HEARD

In total, 25 comment forms were received at the open house, and 13 emails were received after the meeting with comments pertaining to the project. There was generally very positive support of the project, with some concerns and questions among the comments received. Key themes included:

- Safety for bridge users
  - Many comments were received pertaining to lighting, suicide prevention, and deterring homeless encampments.
  - Additionally many comments were received indicating a need for clear separation of bicyclists and pedestrians for safety and comfort of use for all.
- Bridge type and connection preferences
  - Support for the various bridge types was varied among responders, but the tube/truss and cable stay bridge types seemed to garner the most interest
  - Connection location and preferences were fairly mixed, with good connectivity to North Seattle College and Sound Transit light rail station cited as the most important.
  - To those who commented on bridge type, it was important to make an iconic or aesthetically interesting bridge was important.
- Interest in bicycle amenities and connections *off* the bridge
  - The Northgate Pedestrian and Bicycle Bridge is one of many bicycle and pedestrian improvement projects in the area. Attendees were very excited about the other projects, and had some questions about connections from those amenities to the bridge.
- Funding for the bridge
  - As previously stated, many in attendance were in strong favor of building the bridge and want to ensure it gets built. There were some comments encouraging support of using Sound Transit or other agency money to support the construction of the bridge.

## OPEN HOUSE MATERIALS

### Project Brochure

#### Northgate Pedestrian & Bicycle Bridge

##### PROJECT SCHEDULE

	2014			2015			2016			2017			2018		
	Q1	Q2	Q3	Q1	Q2	Q3	Q1	Q2	Q3	Q1	Q2	Q3	Q1	Q2	Q3
<b>EARLY DESIGN</b>															
Identify Type and Route Options															
Screen Options															
Recommend Alternative															
<b>Environmental Review and Approvals</b>															
Final Design															
<b>Northgate Pedestrian Bridge Construction</b>															
<b>Sound Transit Northgate Station Construction</b>															

**PROJECT FUNDING**  
Early estimates for the project cost are about \$25 million. At this time, SDOT and Sound Transit have each committed to provide \$5 million if all required funding is secured by July 31, 2015. If the required funding is not secured by that time, the Sound Transit portion will be used for other pedestrian and bicycle improvements in the area.

**PROJECT NEED**  
The Northgate area is one of the Puget Sound region's major residential and employment centers. The Northgate Pedestrian and Bicycle Bridge will enable more people to access transit, and create easier movements for residents on both sides of I-5. It is anticipated that more than 7,000 people would use the bridge daily. The existing transit center currently serves over 6,000 passengers a day, and the future light rail station is expected to serve over 15,000 passengers per day.

**PROJECT BENEFITS**  
The Northgate Pedestrian and Bicycle Bridge project benefits the area by:

- Increasing ridership at the Transit Center and future Light Rail station.
- Creating an easier connection for students to and from North Seattle College by shortening the walk distance from the Transit Center by almost a mile.
- Providing important access for bicyclists and pedestrians to other improvements coming to the Northgate area.

**PROJECT OVERVIEW**  
The Northgate Pedestrian and Bicycle Bridge project will design and construct a pedestrian and bicycle overpass across Interstate 5 (I-5) that will connect the communities, neighborhoods, businesses and schools in the Northgate area. The bridge will be in the vicinity of NE 100th and NE 103rd streets and will likely be between 1,800 and 2,200 feet long. Possible alignments, bridge types and connection points to other assets are being evaluated by the project team, with the goal of selecting a preferred option by fall of 2014.

**PROJECT LOCATION**

**STAY IN TOUCH!**  
For more information about this project, please visit our project website:  
[www.seattle.gov/transportation/northgatepedbridge.htm](http://www.seattle.gov/transportation/northgatepedbridge.htm)  
If you have specific questions or concerns, please contact:  
Art Brochet, Communications Lead  
[art.brochet@seattle.gov](mailto:art.brochet@seattle.gov) • (206) 615-0786

#### Northgate Pedestrian & Bicycle Bridge

JUNE 2014

#### Northgate Pedestrian & Bicycle Bridge

##### BRIDGE TYPES UNDER CONSIDERATION

Of the many types of bridge structures that could span I-5 at Northgate, some are considerably deeper than others, due to the span length. Bridge types with a deeper span structure – such as concrete box, steel plate and steel truss structures – would result in a higher bridge deck, longer bridge approaches, and more time needed to cross. As a result, three types of structures enabling a thinner structure below the bridge deck are being considered for the main span on this project:

**TIED ARCH BRIDGE, HELIX PEDESTRIAN BRIDGE**  
Seattle, Washington

**CABLE STAY BRIDGE, MARY AVENUE BRIDGE**  
Cupertino, California

**TUBE/TRUSS BRIDGE, ARGANZUELA FOOTBRIDGE**  
Madrid, Spain

##### BRIDGE LOCATION

In order to provide the greatest benefit for all users, the Seattle Department of Transportation (SDOT) is designing the bridge to create access to area amenities such as North Seattle College, transit facilities, community services and commercial centers.

In developing placement options, SDOT is considering area wetlands, Thornton Creek, Washington State Department of Transportation (WSDOT) operations, North Seattle College, right of way and existing structures.

Possible bridge access locations.

Example of how the bridge might connect on either side of I-5.

From each access point, there are a number of potential routes for reaching the other side. The graphic above shows one possible alignment.

##### OTHER PEDESTRIAN AND BICYCLE IMPROVEMENTS

The Northgate Pedestrian and Bicycle Bridge is one of many improvements being proposed in the area. We hope to create a more walkable and bikeable Northgate through investments that benefit users of all abilities. The map below highlights some of the areas for improvement.

**PHASE 1**

- 1st Ave NE protected bike lane (92nd to Northgate Way)

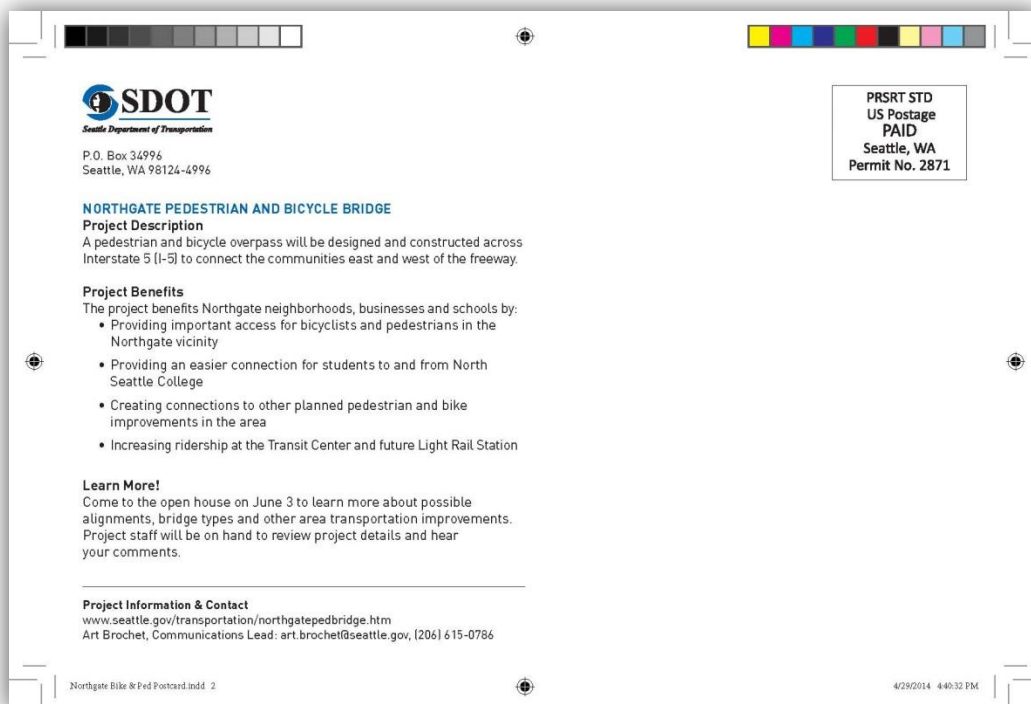
**PHASE 2**

- Sidewalk upgrades - 5th Ave (100th to 105th)
- Sidewalks on NE 103rd (3rd to Roosevelt)
- Protected bike lanes and pedestrian improvements on 92nd (Wallingford to 1st Ave)
- Sidewalk on 92nd (1st to 5th)

**PHASE 3**

- Pedestrian improvements on Northgate Way (Corliss to 1st)
- Protected bike lane on 100th (1st to 5th)
- Sidewalk on 92nd (1st to 5th)
- Sidewalk on 95th (1st to 5th)
- Sidewalk on 98th (5th to 8th)
- Crossing improvements at 5th Ave and NE 94th St
- Greenway along 8th Ave NE (92nd to Northgate Way)

## Invitation



## Display boards (1 – 6 of 14)

**NORTHGATE PEDESTRIAN AND BICYCLE BRIDGE**

# WELCOME!

歡迎      Kính Chào Quý Khách  
환영합니다!      Bienvenidos

**5:30 to 6 pm** Review displays and speak with project staff  
**6 to 6:30 pm** Presentation and Q&A  
**6:30 to 7:30 pm** Continue reviewing displays

[www.seattle.gov/transportation/northgatepedbridge.htm](http://www.seattle.gov/transportation/northgatepedbridge.htm)

**NORTHGATE PEDESTRIAN AND BICYCLE BRIDGE**

## WHERE DO YOU LIVE?

[www.seattle.gov/transportation/northgatepedbridge.htm](http://www.seattle.gov/transportation/northgatepedbridge.htm)

**NORTHGATE PEDESTRIAN AND BICYCLE BRIDGE**

## Stay Involved!

Stay in touch through our project website:  
<http://www.seattle.gov/transportation/northgatepedbridge.htm>

**Questions?**  
 Contact Art Brochet  
[art.brochet@seattle.gov](mailto:art.brochet@seattle.gov) or 206-615-0786

[www.seattle.gov/transportation/northgatepedbridge.htm](http://www.seattle.gov/transportation/northgatepedbridge.htm)

**NORTHGATE PEDESTRIAN AND BICYCLE BRIDGE**

## Timeline

	2014			2015			2016			2017			2018		
	Q1	Q2	Q3	Q1	Q2	Q3	Q1	Q2	Q3	Q1	Q2	Q3	Q1	Q2	Q3
<b>EARLY DESIGN</b>															
Identify Type and Route Options															
Screen Options															
Recommend Alternative															
Environmental Review and Approvals															
Final Design															
Northgate Pedestrian Bridge Construction															
Sound Transit Northgate Station Construction															

[www.seattle.gov/transportation/northgatepedbridge.htm](http://www.seattle.gov/transportation/northgatepedbridge.htm)

**NORTHGATE PEDESTRIAN AND BICYCLE BRIDGE**

## ACCESS POINT OPTIONS

[www.seattle.gov/transportation/northgatepedbridge.htm](http://www.seattle.gov/transportation/northgatepedbridge.htm)

**NORTHGATE PEDESTRIAN AND BICYCLE BRIDGE**

## BRIDGE COMPONENTS

**PRIMARY SPAN**  
 The primary span will be a steel truss bridge with a main span of approximately 1,000 feet. It will be supported by two large concrete piers. The bridge will have a clear height of approximately 100 feet.

**WEST APPROACH**  
 The west approach will be a concrete bridge with a main span of approximately 100 feet. It will be supported by two large concrete piers. The bridge will have a clear height of approximately 100 feet.

**EAST APPROACH**  
 The east approach will be a concrete bridge with a main span of approximately 100 feet. It will be supported by two large concrete piers. The bridge will have a clear height of approximately 100 feet.

**CONNECTION TO SOUND TRANSIT STATION**  
 The bridge will be connected to the Sound Transit Station by a pedestrian walkway. The walkway will be approximately 100 feet long and will have a clear height of approximately 100 feet.

[www.seattle.gov/transportation/northgatepedbridge.htm](http://www.seattle.gov/transportation/northgatepedbridge.htm)

## Display boards (7 – 11 of 14)

**NORTHGATE PEDESTRIAN AND BICYCLE BRIDGE**

Primary Span Type:

### TIED ARCH

- Vertical loads of the structure and pedestrians on the deck are carried through vertical suspension members to the arch
- A tied-arch transmits outward horizontal forces at the base of the arch into a bottom tension chord



Examples:



[www.seattle.gov/transportation/northgatepedbridge.htm](http://www.seattle.gov/transportation/northgatepedbridge.htm)

**NORTHGATE PEDESTRIAN AND BICYCLE BRIDGE**

Primary Span Type:

### TUBE/TRUSS

- Utilizes connected members such as triangles, squares, and rectangles as the structural system
- Creates a more enclosed experience, as the structure surrounds the user on all sides



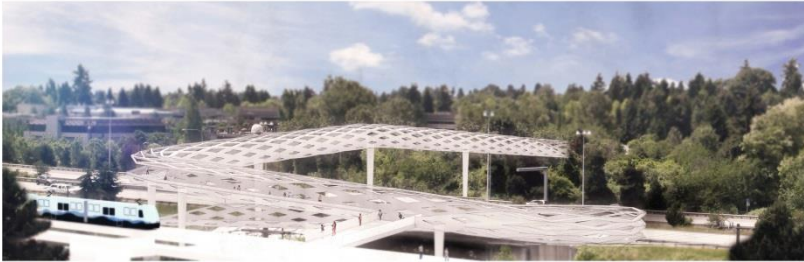
Examples:



[www.seattle.gov/transportation/northgatepedbridge.htm](http://www.seattle.gov/transportation/northgatepedbridge.htm)

Primary Span Type:

### TUBE/TRUSS



Primary Span Type:

### TIED ARCH



Primary Span Type:

### CABLE STAY



## Display Boards (12 – 14 of 14)

**NORTHGATE PEDESTRIAN AND BICYCLE BRIDGE**

### Screening Criteria: Alignment Options

Alignments will be evaluated based on a series of criteria

<b>Bridge &amp; Approach Geometry</b> <ul style="list-style-type: none"> <li>Span Lengths</li> <li>Approach Lengths</li> <li>WSDOT Sign Bridge Visibility</li> </ul>	<b>Design Opportunities</b> <ul style="list-style-type: none"> <li>User Experience</li> <li>Neighborhood Context</li> <li>Interstate Context</li> <li>Bridge and Trail Aesthetics</li> </ul>
<b>Connectivity</b> <ul style="list-style-type: none"> <li>Pedestrian Access</li> <li>Bicycle Network Integration</li> </ul>	<b>Environmental Impacts</b> <ul style="list-style-type: none"> <li>Wetland Area</li> <li>Footprint of the Structure</li> </ul>
<b>Cost</b> <ul style="list-style-type: none"> <li>Construction</li> <li>Right of Way</li> <li>Maintenance</li> <li>Corridor Improvements</li> </ul>	<b>Safety</b> <ul style="list-style-type: none"> <li>Lighting</li> <li>Visibility</li> <li>Egress</li> <li>Multi-modal interaction</li> </ul>
<b>Constructability</b> <ul style="list-style-type: none"> <li>Impact to Traffic</li> <li>Impact to Property</li> <li>Construction Staging</li> <li>Construction Duration</li> </ul>	

[www.seattle.gov/transportation/northgatepedbridge.htm](http://www.seattle.gov/transportation/northgatepedbridge.htm)

**NORTHGATE PEDESTRIAN AND BICYCLE BRIDGE**

### Environmental Process

```

graph LR
    A[Define Existing Conditions] --> B[Identify Environmental Impacts]
    B --> C[Document Findings]
    C --> D[Obtain Permits and Approvals]
  
```

- Define Existing Conditions**
  - Collect current information to set an environmental baseline
- Identify Environmental Impacts**
  - Review environmental studies completed for projects in the area
  - Solicit concerns from the public
  - Review early designs to minimize impacts
- Document Findings**
  - Prepare technical reports for areas that will be impacted (e.g., wetlands, water quality, fish and wildlife, cultural resources, transportation, economic, and community)
  - Develop documentation for SEPA and NEPA
  - Submit completed NEPA documents to WSDOT and FHWA for approval
  - Prepare SEPA checklist and solicit public comments
- Obtain Permits and Approvals**

Permits and approvals that may be required:

  - Section 404/401 Nationwide Permit
  - Section 7 Endangered Species Act
  - Section 106 National Historic Preservation Act
  - Coastal Zone Management Consistency
  - Construction Stormwater General Permit
  - Hydraulic Project Approval
  - Seattle Critical Areas Review
  - Seattle Building Permits

[www.seattle.gov/transportation/northgatepedbridge.htm](http://www.seattle.gov/transportation/northgatepedbridge.htm)

**NORTHGATE PEDESTRIAN AND BICYCLE BRIDGE**

### Area Pedestrian and Bicycle Improvements

**LEGEND**

- Blue and Pedestrian Improvements
- Blue Improvements
- Pedestrian Improvements

**PHASE 1**

- 1st Ave NE protected bike lane (92nd to Northgate Way)

**PHASE 2**

- Sidewalk upgrades - 5th Ave (100th to 105th)
- Sidewalks on NE 103rd (3rd to Roosevelt)
- Protected bike lanes and pedestrian improvements on 92nd (Hallingford to 1st Ave)
- Sidewalk on 92nd (1st to 5th)

**PHASE 3**

- Pedestrian improvements on Northgate Way (Corliss to 1st)
- Protected bike lane on 100th (1st to 5th)
- Sidewalk on 92nd (1st to 5th)
- Sidewalk on 95th (1st to 5th)
- Sidewalk on 98th (5th to 8th)
- Crossing improvements at 5th Ave and NE 94th St
- Greenway along 8th Ave NE (92nd to Northgate Way)

[www.seattle.gov/transportation/northgatepedbridge.htm](http://www.seattle.gov/transportation/northgatepedbridge.htm)