

# Northgate Ped/Bike Bridge



Seattle Bicycle Advisory Board  
Rachel McCaffrey, Outreach Lead  
Eric Birkhauser, VIA Architecture  
June 7, 2017



**Seattle**  
Department of  
Transportation

# Our mission, vision, and core values

**Mission:** deliver a high-quality transportation system for Seattle

**Vision:** connected people, places, and products

Committed to **5 core values** to create a city that is:

- Safe
- Interconnected
- Affordable
- Vibrant
- Innovative

For **all**

# Presentation overview

- Background, progress & status
- Updated design overview
- Other walking/biking investments in Northgate
- Next steps
- Q&A



# Background, progress & status

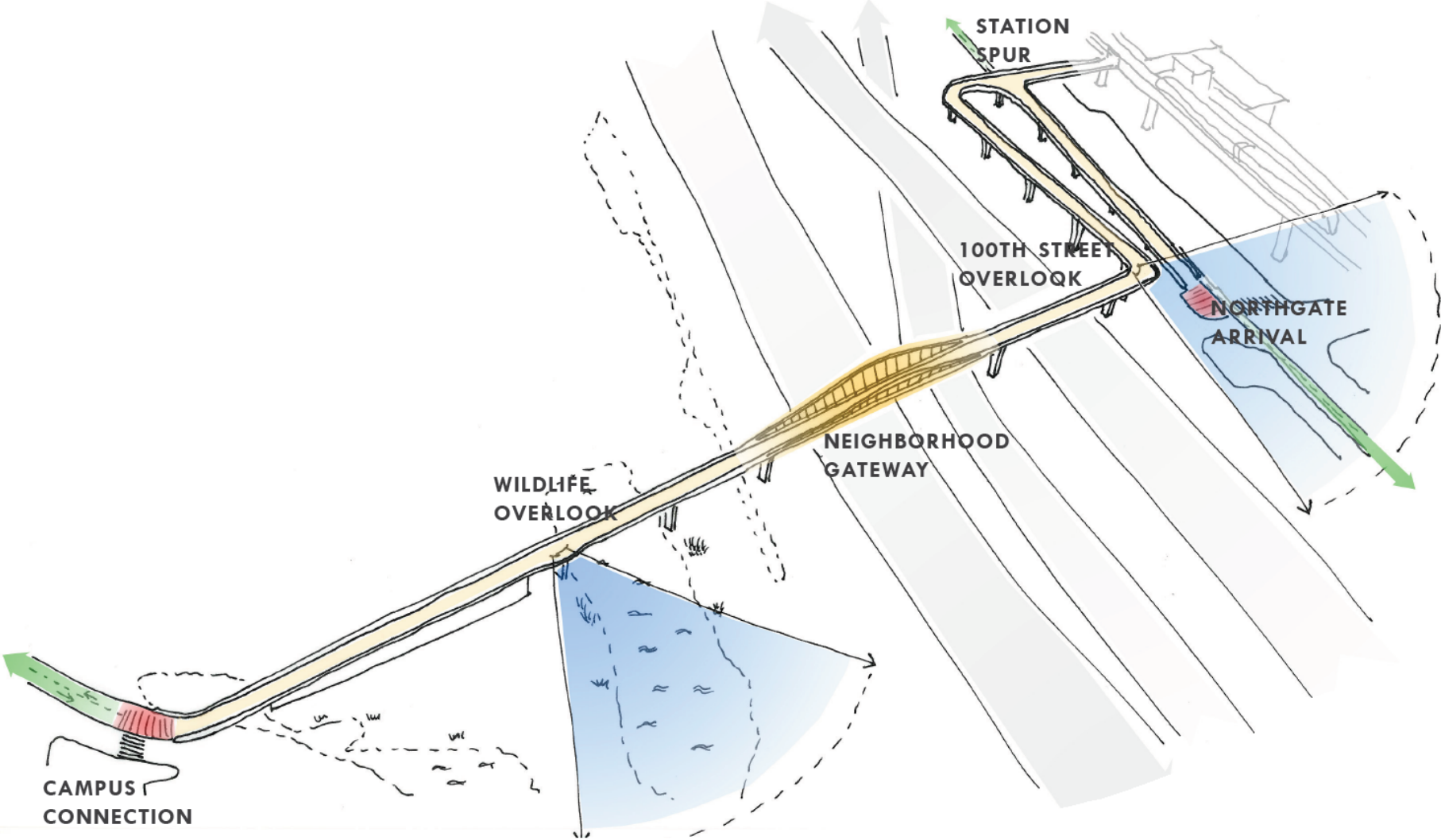
- 2006: Northgate Coordinated Transportation Investment Plan
- 2012: King County feasibility study
- 2014: Early planning and design
  - 3 bridge alternatives
  - Public meeting
- 2015: 30% design
  - Public meeting
- 2016: Project put on hold
  - Independent cost validation
  - Formed new project team
- 2017: New 30% design



# Cost-saving changes

Original Design	Revised Design
20-foot-wide walkway on bridge	16-foot-wide walkway on bridge
2,100-foot long bridge length	Shortened bridge length to 1,600 feet, also reducing travel time
East approach conflicted with WSDOT Park-and-Ride at 1st Ave NE	East approach modified as it touches down near 1st Ave NE, simplifying the connection and preserving the WSDOT Park-and-Ride lot
West approach included stairs at North Seattle College, with limited sight distance	West approach modified to improve sight distances and make a more direct connection
Complicated construction approach	Standard construction approach to reduce project duration
Tube/truss design (enclosed)	More open structure and more graceful bridge transition

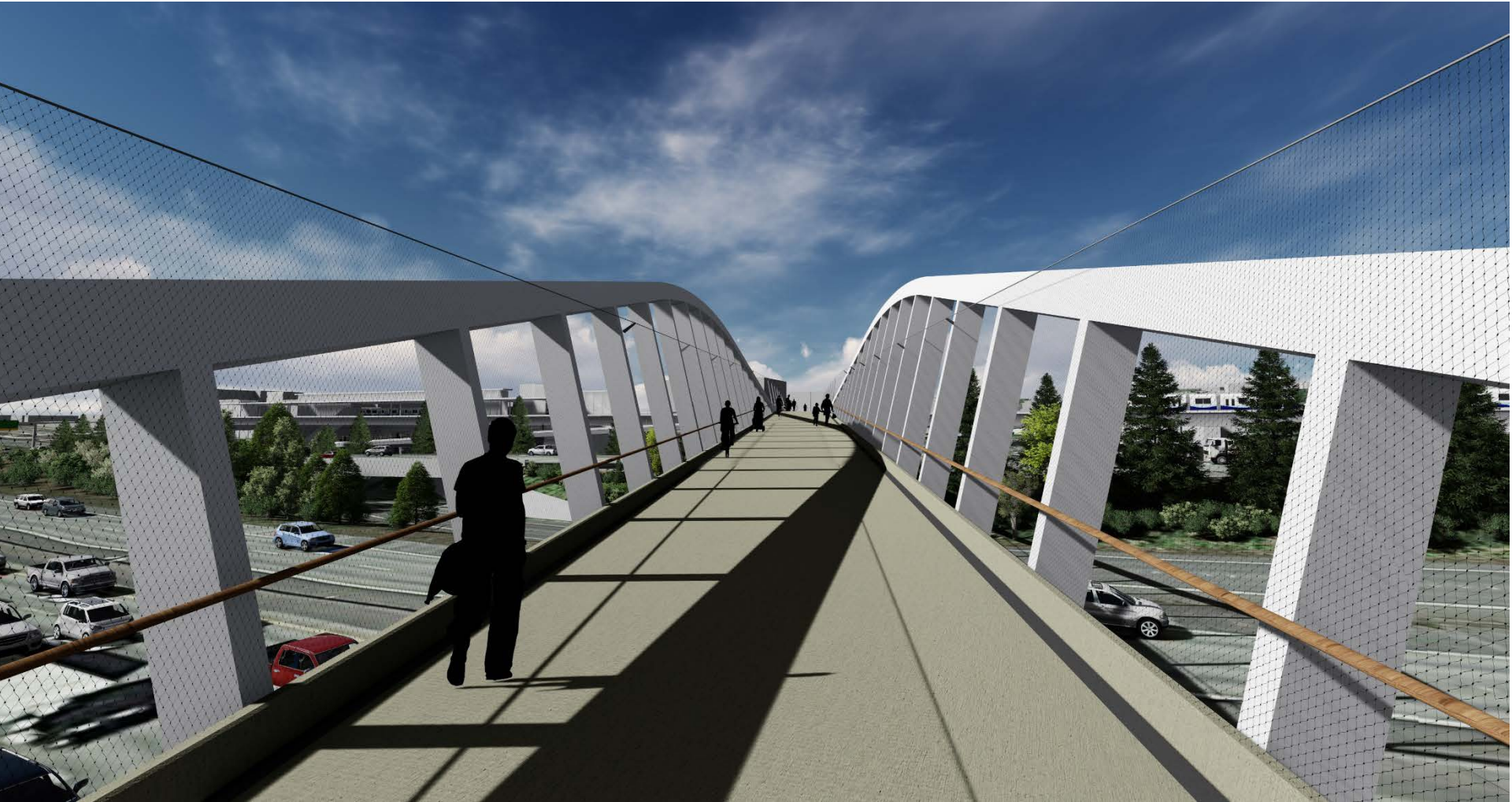
# Revised bridge design



# Open truss design

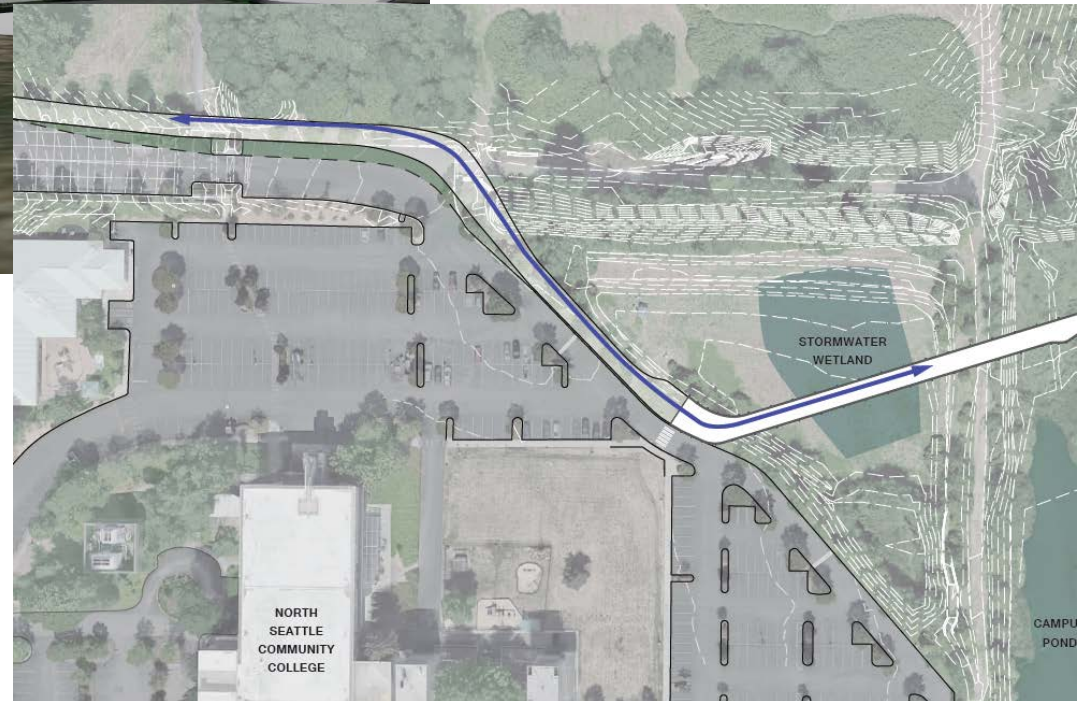
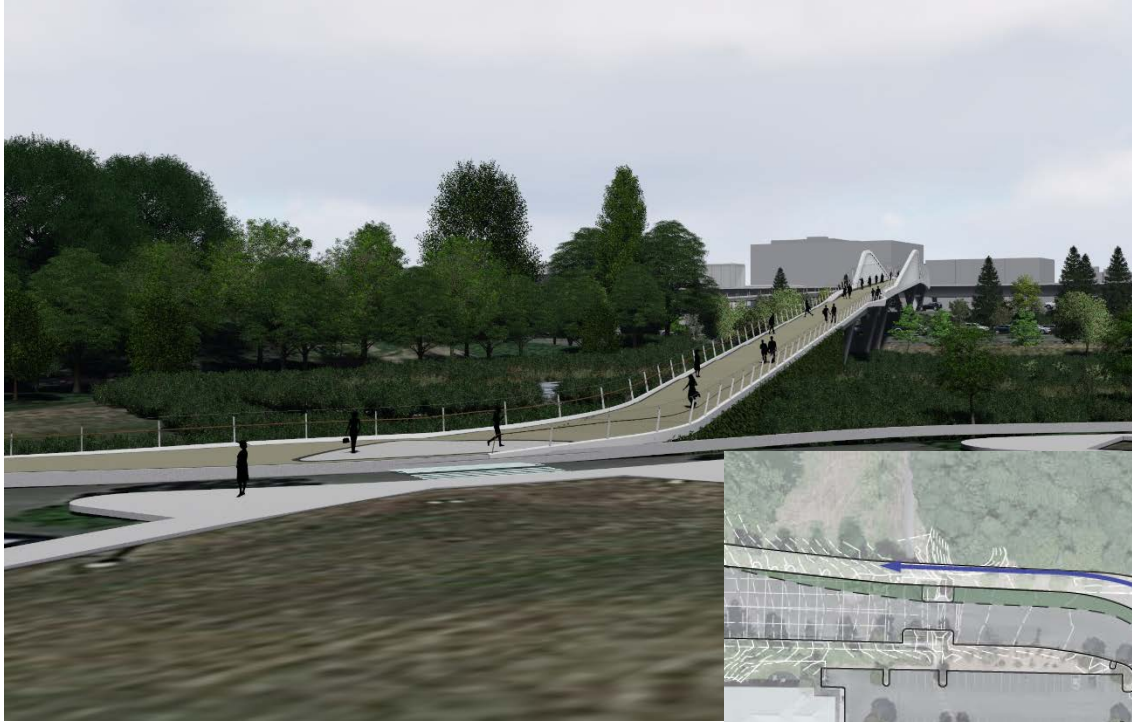


# Open truss design





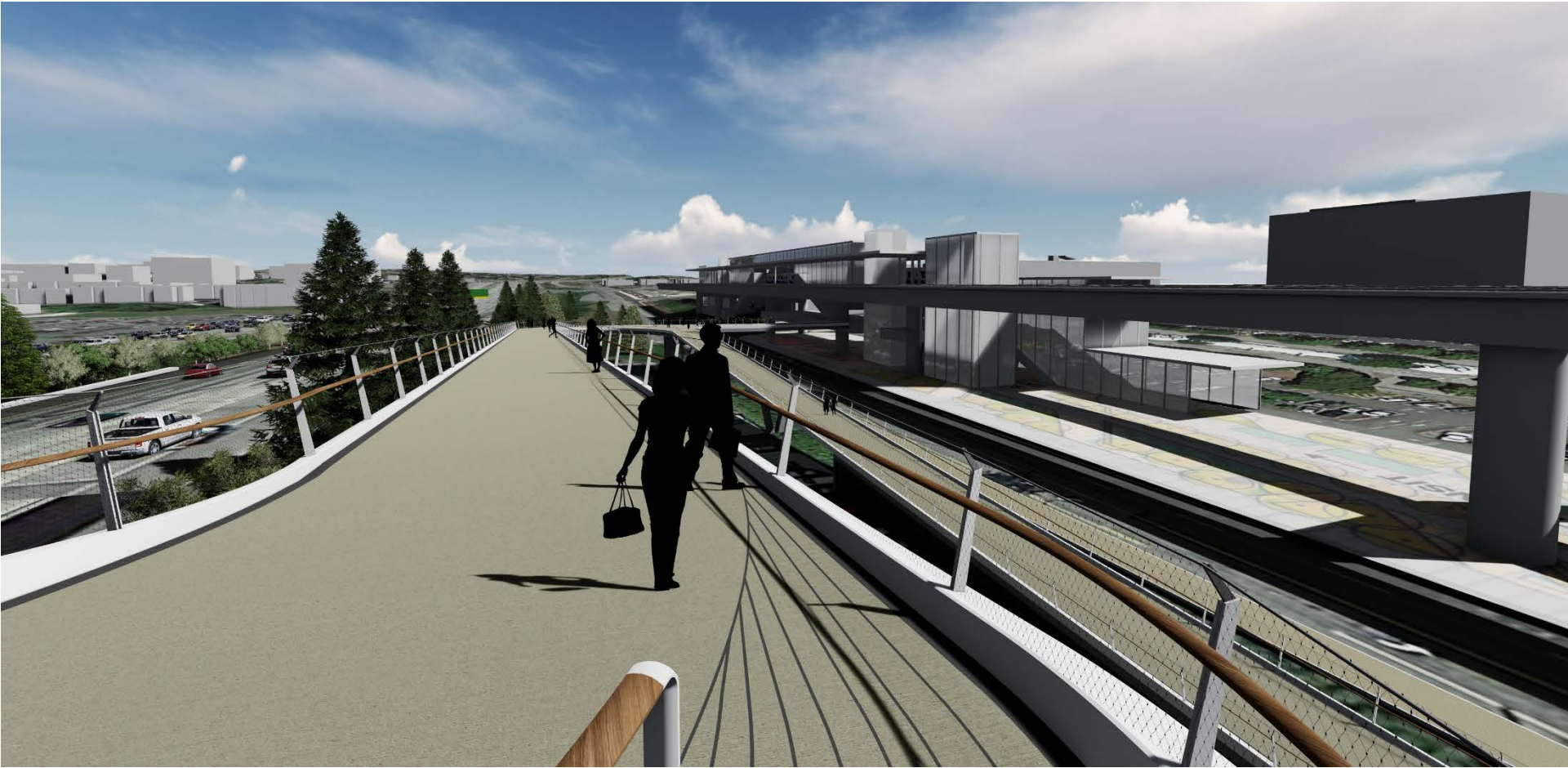
# Campus connection (west approach)



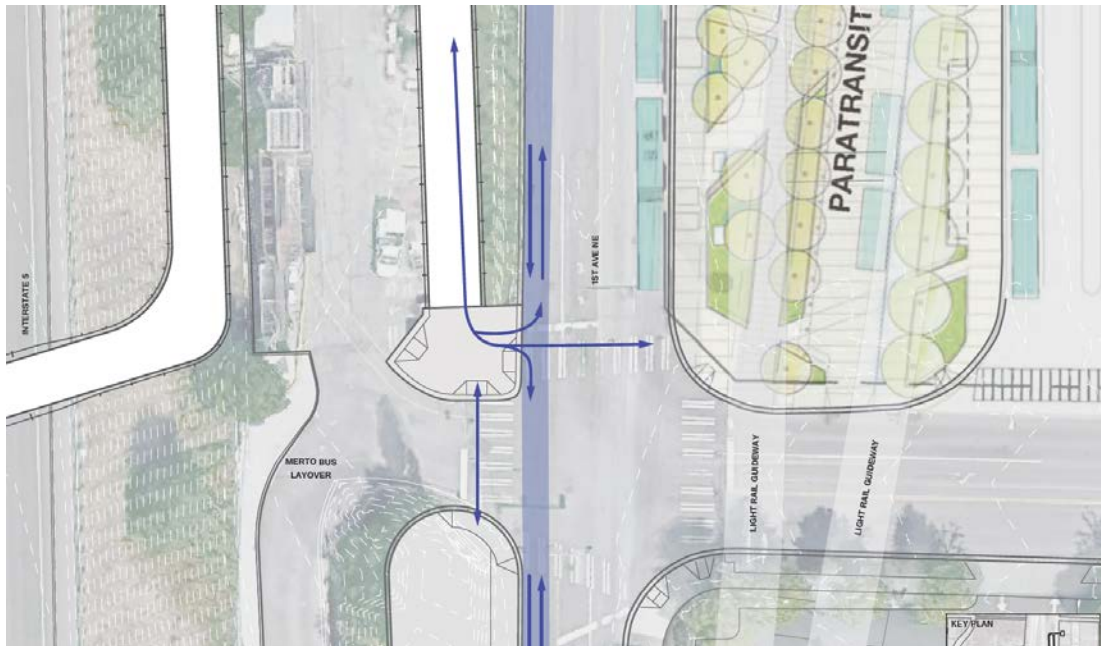
# I-5 gateway



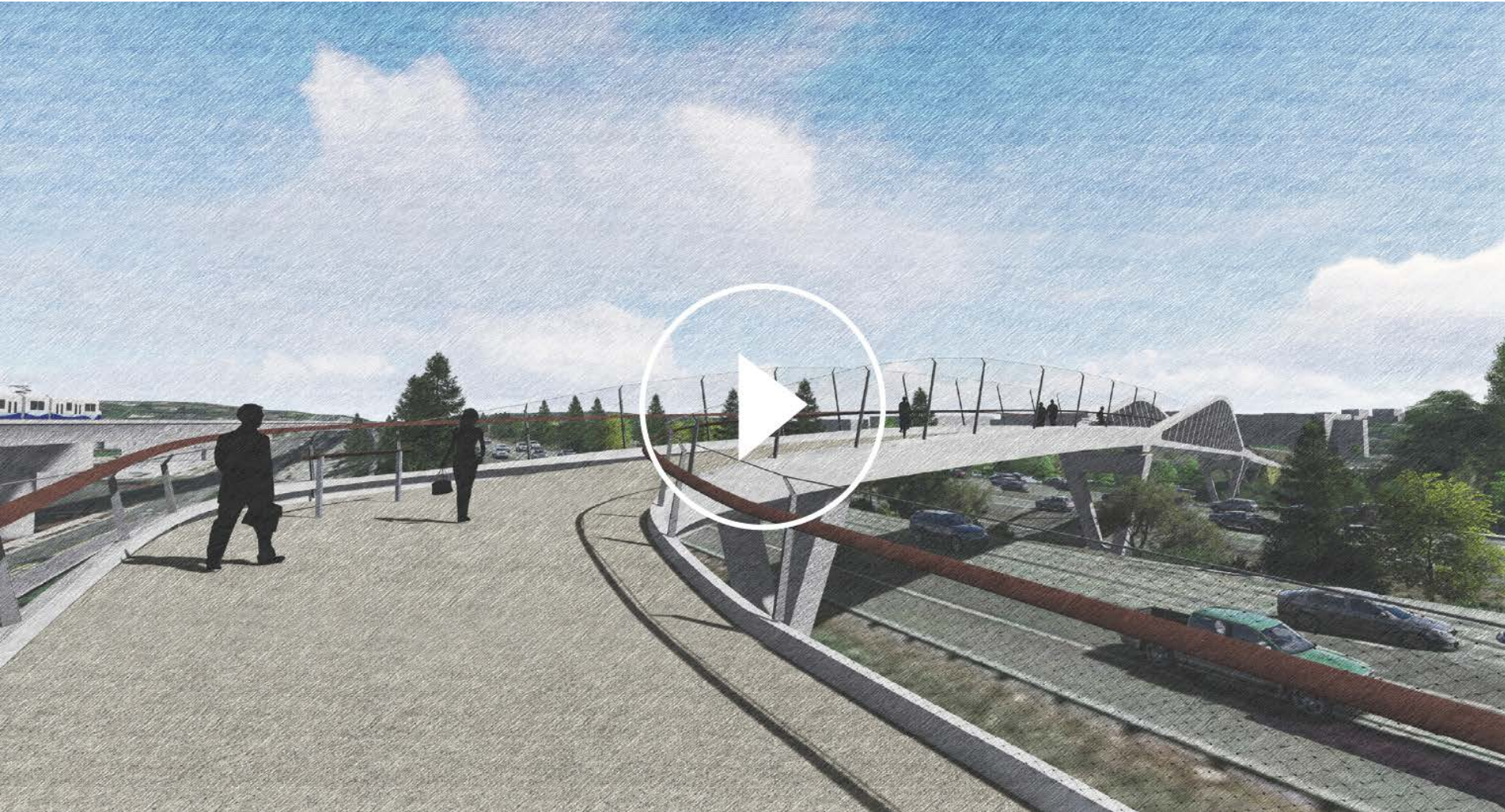
# NE 100th St overlook



# Northgate arrival (east approach)



# Animation



# Pedestrian Projects

- 1 Northgate Pedestrian & Bicycle Bridge
- 2 1st Ave NE multi-use path (NE 92nd St to Northgate Way)
- 3 Improved sidewalks (Station to 5th Ave NE)
- 4 Protected Bike Lane NE 92nd St (Wallingford Ave N to 1st Ave NE)
- 5 Crossing improvements (N Northgate Way and Corliss Ave N)
- 6 Streetscape & bike improvements (1st Ave NE to 5th Ave NE)
- 7 New sidewalk NE 95th St (1st Ave NE to 5th Ave NE)
- 8 New sidewalk NE 98th St (5th Ave NE to 8th Ave NE)
- 9 Crossing improvements (5th Ave NE and NE 95th St)
- 10 North Seattle Greenway (Crown Hill to Northgate Pedestrian & Bicycle Bridge)



# Next steps: Northgate Bridge

Time frame	Activity/action
2018	Design complete
2019	Construction begins
2020	Bridge opens before light rail station

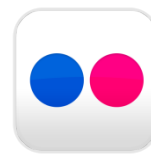


# Questions?

Project Team

NorthgateBridge@seattle.gov | (206) 615-0925  
[www.seattle.gov/transportation/northgatepedbridge.htm](http://www.seattle.gov/transportation/northgatepedbridge.htm)

[www.seattle.gov/transportation](http://www.seattle.gov/transportation)



**Seattle**  
Department of  
Transportation