



Sidewalk Safety Repair Program

Sidewalk Safety Repair Program (SSRP)

- Sidewalk Safety Repair Program Overview
- Levy to Move Seattle Deliverables
- Existing Sidewalk Conditions
- Repair Prioritization
- 2022 Work Plan

SSRP Overview

- The Sidewalk Safety Repair Program (SSRP) oversees the maintenance of the City's existing sidewalks.
- The program's goal is to make sidewalks safe and accessible.
- The program is funded to repair damaged sidewalks
- We perform full sidewalk replacement (concrete or asphalt) and preventative maintenance (shims and bevels).

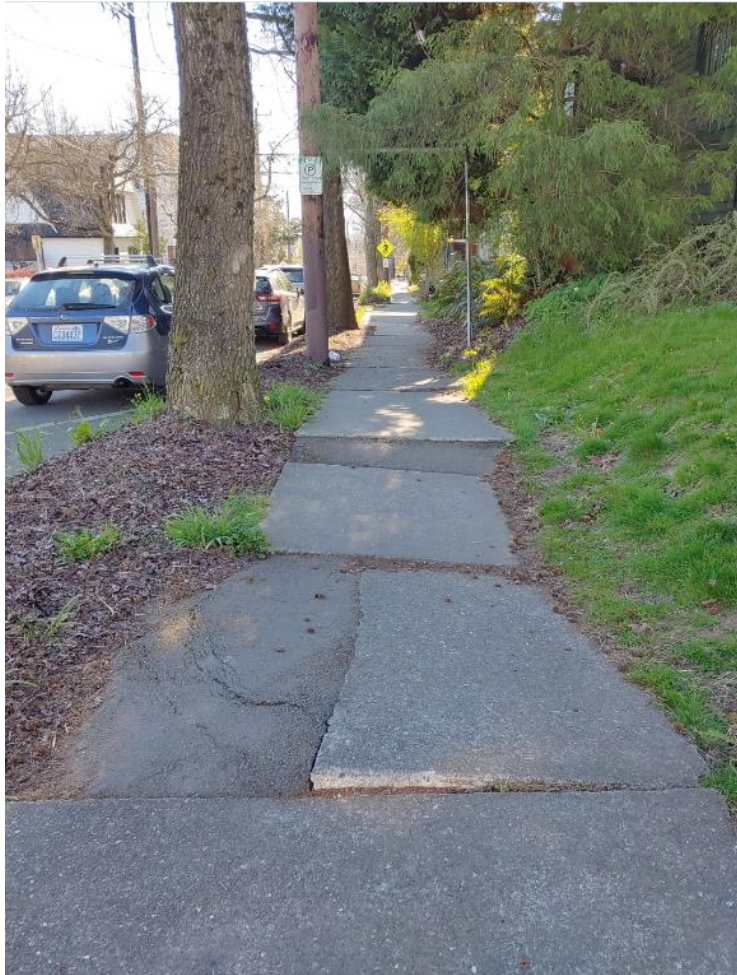


SSRP Overview



219 22nd Ave S sidewalk repair (before & after)

SSRP Overview



E Thomas St & 17th Ave E sidewalk repair (before & after)

Program Staff & Supporting Groups

- 2 full-time SSRP staff
 - SSRP Program Manager + 1 associate
- 4 concrete crews
- 2 asphalt crews
- 4 street maintenance crews (asphalt sidewalk shims)
- Bevel contractor



SSRP & Levy to Move Seattle

Levy Legislation: Repair up to 225 blocks of damaged sidewalks in our urban centers and villages.

Targets:

- 225 blocks of sidewalk equivalent replacement over 9 years (*1 block = 2,000 sq-ft*)
- 1,000 sidewalk spot repairs per year with bevels/shims/curbs (*target added in 2018*)

Funding across the life of the Levy:

- \$16.6M total Levy to Move Seattle funding
- \$15.1M REET (Real Estate Excise Tax)
- \$4M New \$20 VLF

SSRP & Levy to Move Seattle

Year	Sidewalk Replacement (block equivalents)	Sidewalk Spot Repairs (shims, bevels, curbs)
2016	42.55	2,613
2017	11.87	2,709
2018	23.70	10,746
2019	29.01	12,269
2020	18.12	5,964
2021	38.48	17,239
TOTAL THROUGH 2021	163.73	51,540
2022 -2024	<u>+63 planned</u>	<u>Up to 5,000/year</u>

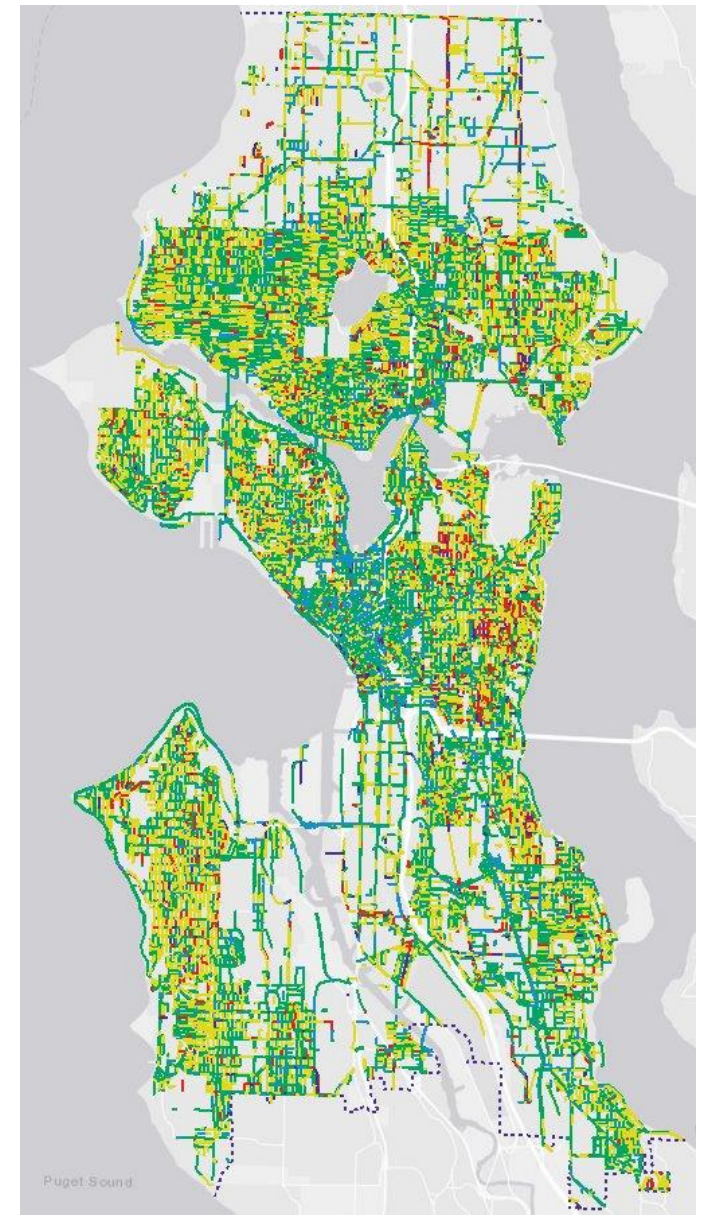
Existing Sidewalk Conditions

Seattle's Sidewalk Network

- Over 34,000 blocks of sidewalk
- 2,300 miles of sidewalk

2017 Sidewalk Assessment Findings

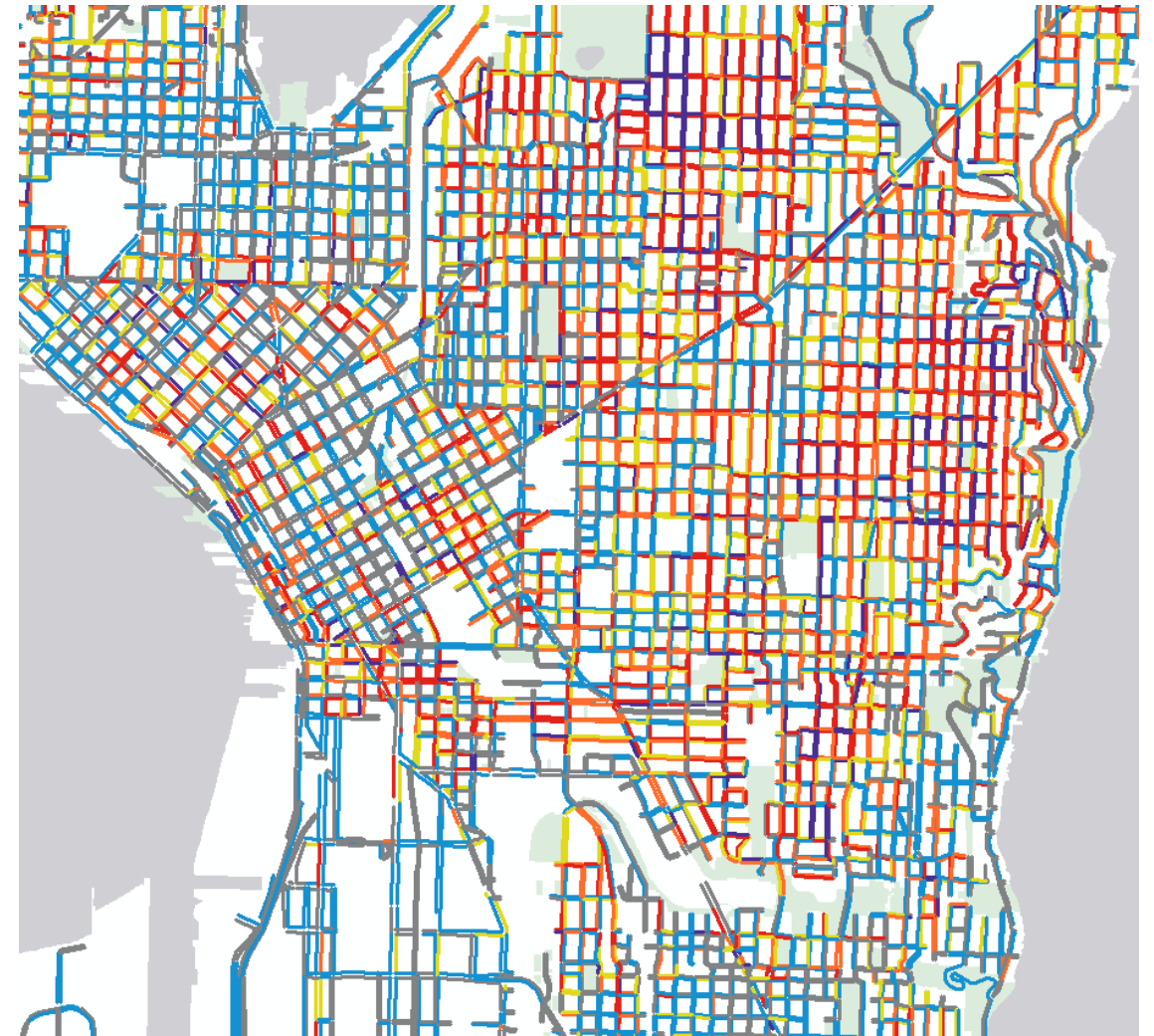
- 92,000 uplifts
- 38,000 surface conditions
- 20,000 obstructions
- 3,600 isolated cross slopes



Repair Prioritization

Prioritization Model inputs:

- Safety
- Mobility Impairment
- Cost
- Usage (*distance to schools, government facilities, transit stops, medical facilities, etc.*)



Sidewalk repair prioritization map screenshot

Priority scale (high to low): Purple -> Red -> Orange -> Yellow -> Blue -> Grey

Repair Prioritization

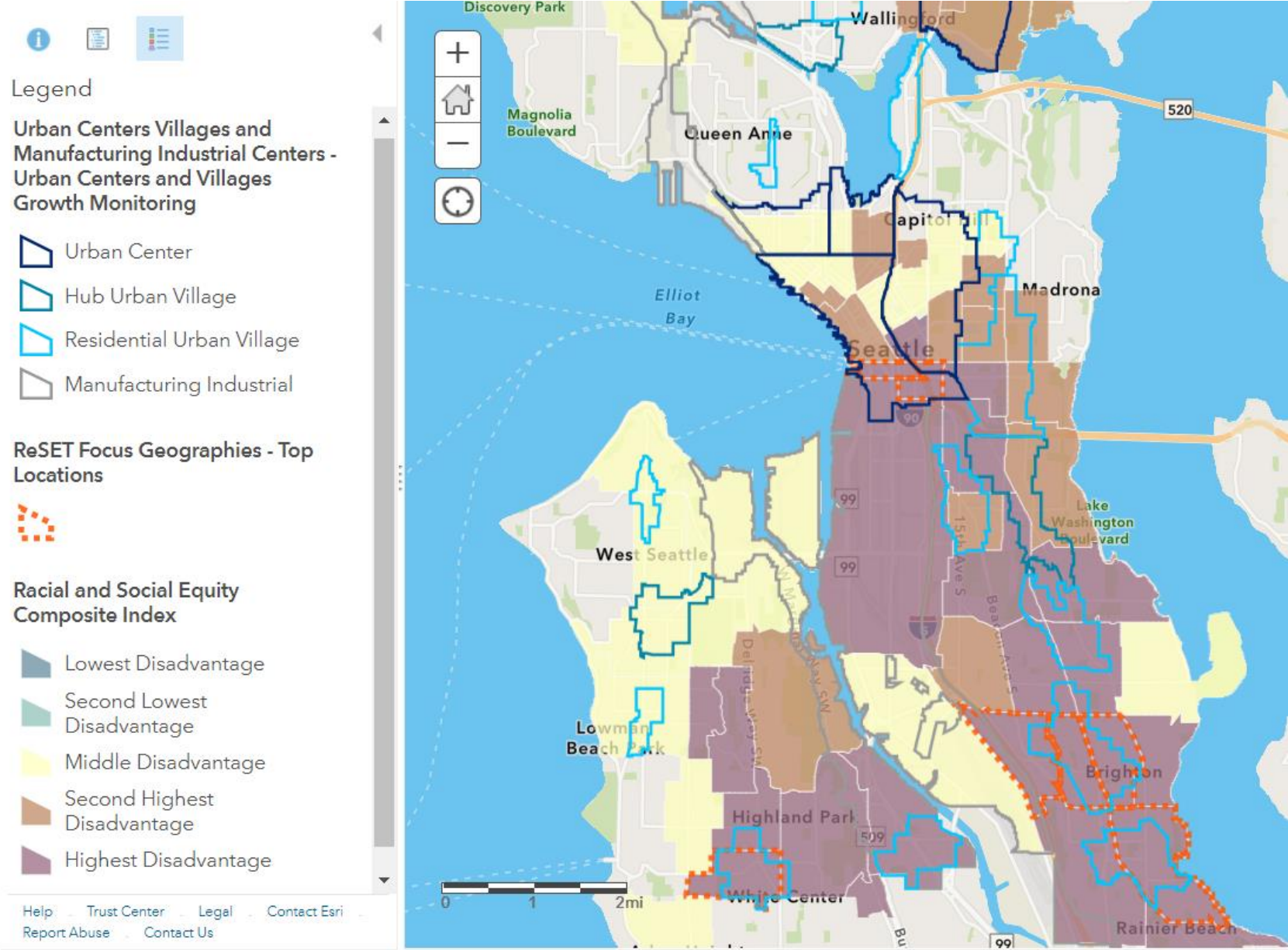
Additional priority factors

- Leveraging opportunities with other capital projects (e.g. roadway paving)
- Partnering with ADA curb ramp projects
- Geographic & social justice distribution
- Emergent repair needs or high complaint locations on a case-by-case basis



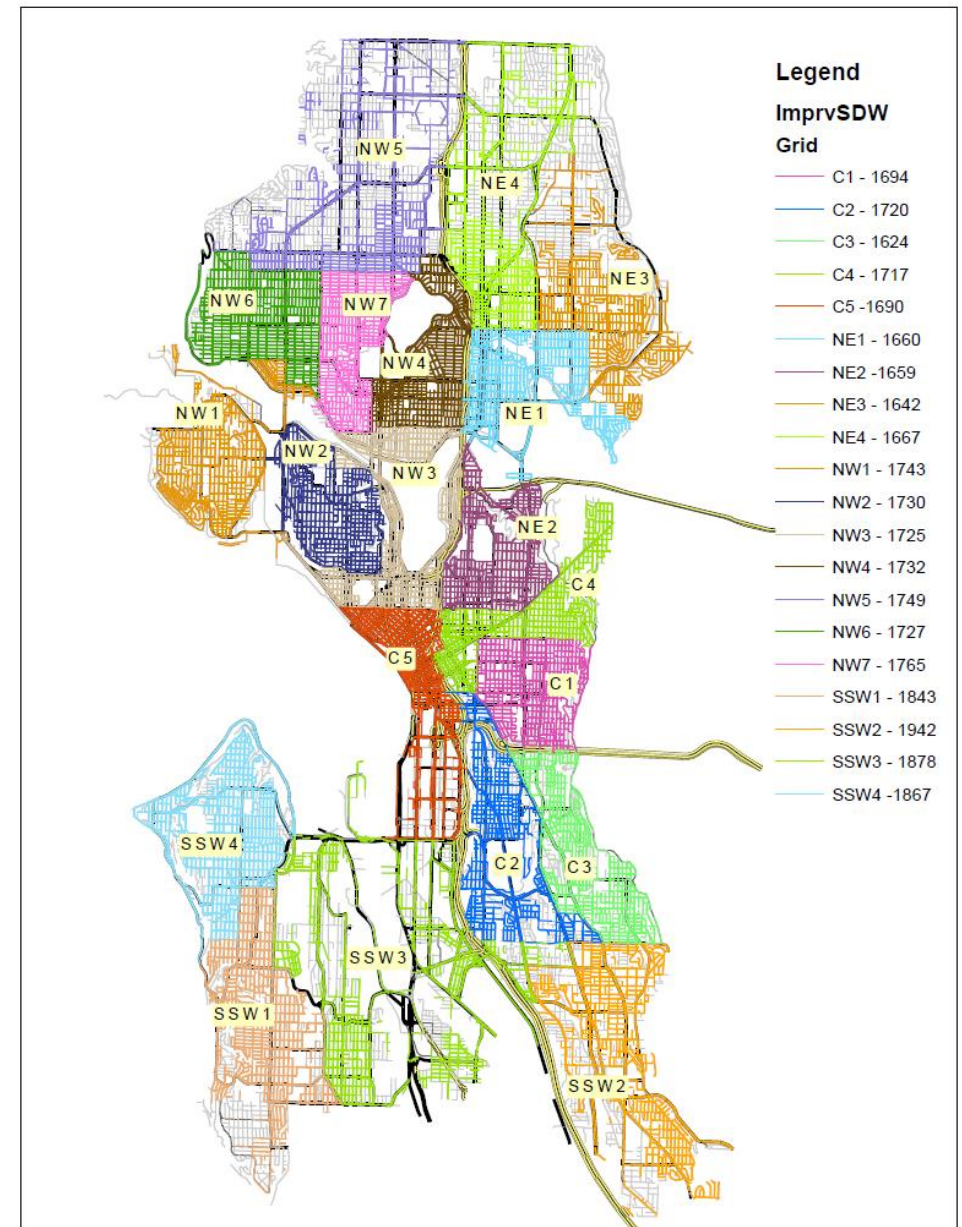
10th Ave E & E Prospect curb ramp project

Geographic & Social Justice Distribution



Proactive Shims

In 2019, SSRP piloted a proactive grid approach to asphalt sidewalk shims for our Street Maintenance crews.

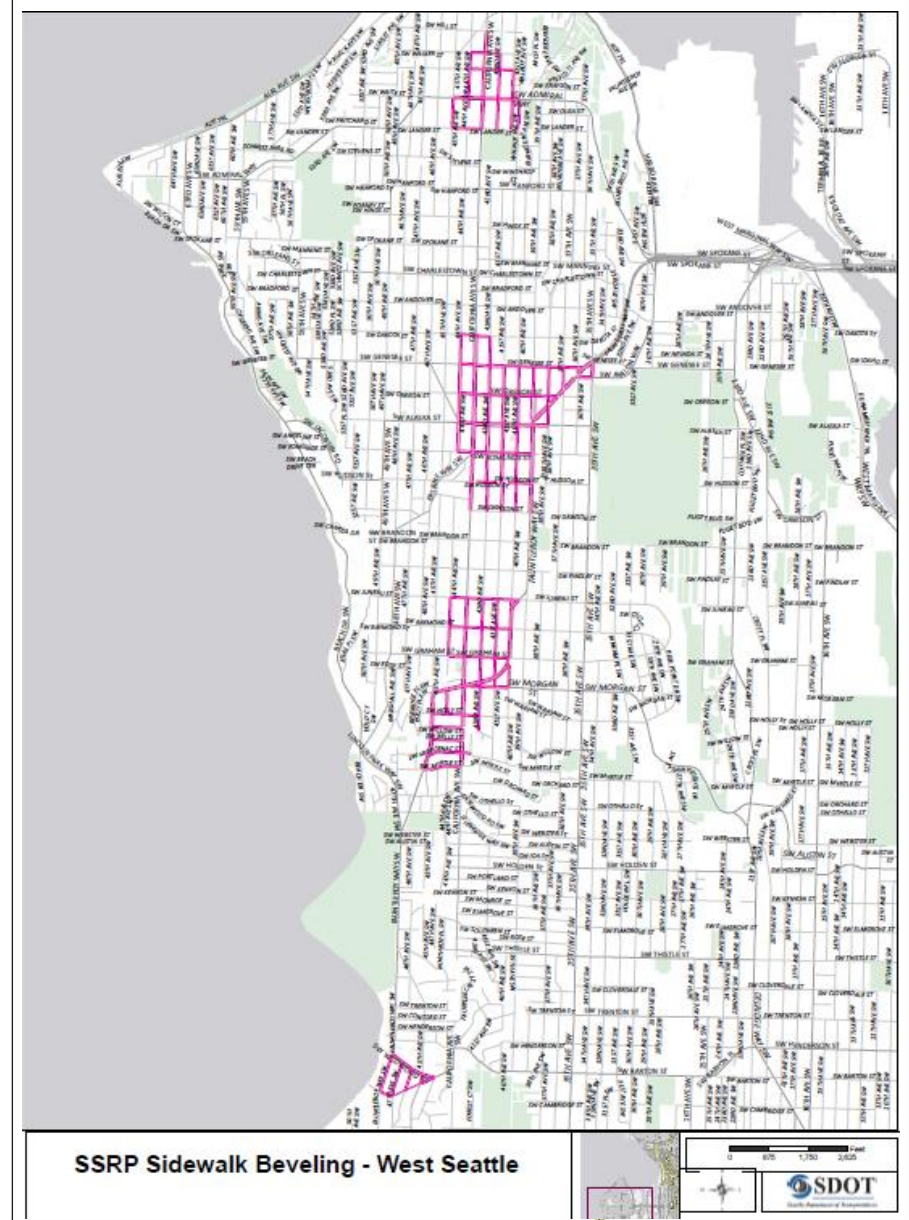


Proactive Bevels

2020 - 2024 Beveling in grids



Beveled sidewalks on Fauntleroy Way SW



SSRP Work Plan

Upcoming Sidewalk Repair Projects

CD 1 (West Seattle, South Park) – 15 projects

CD 2 (SE Seattle, Georgetown) – 20 projects

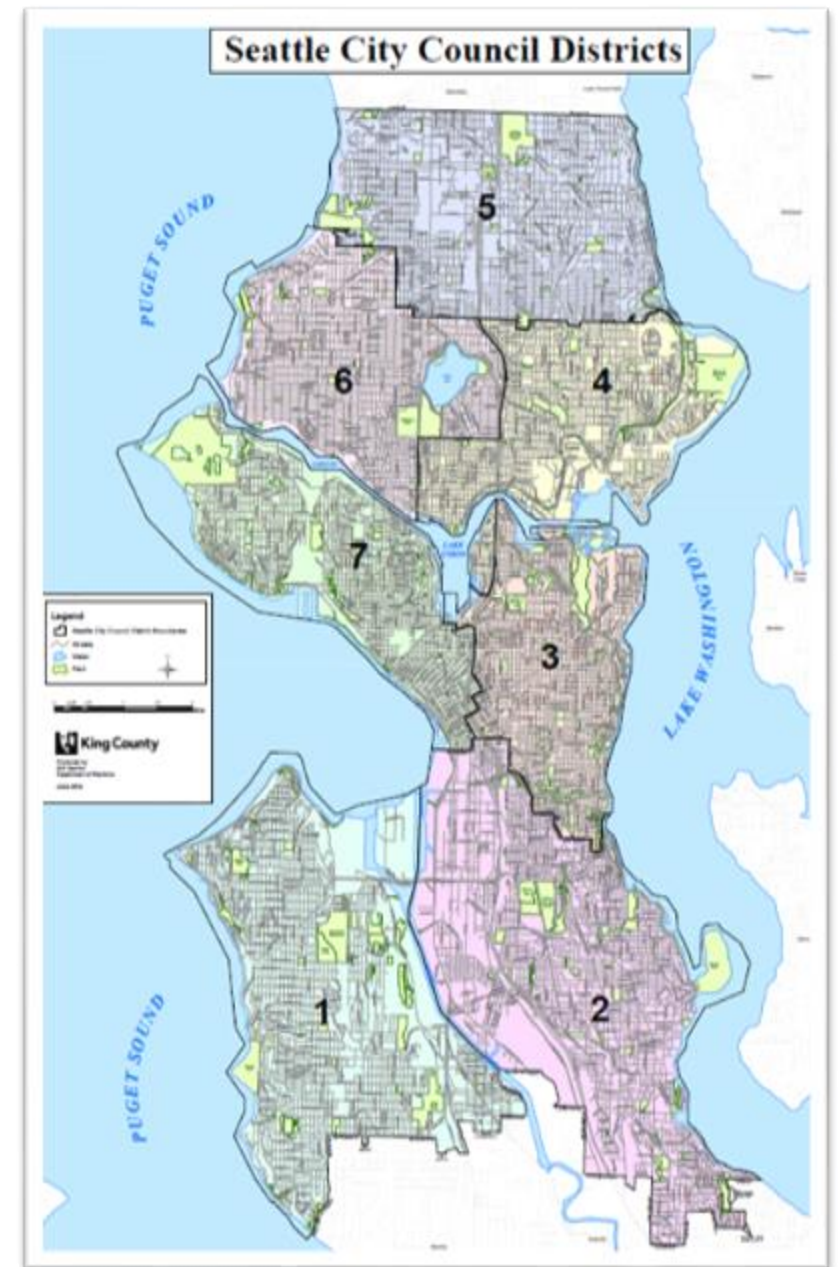
CD 3 (Central) – 20 projects

CD 4 (NE Seattle) – 3 projects

CD 5 (North Seattle) – 10 projects

CD 6 (Northwest Seattle) – 12 projects

CD 7 (Pioneer Square to Magnolia) – 3 projects



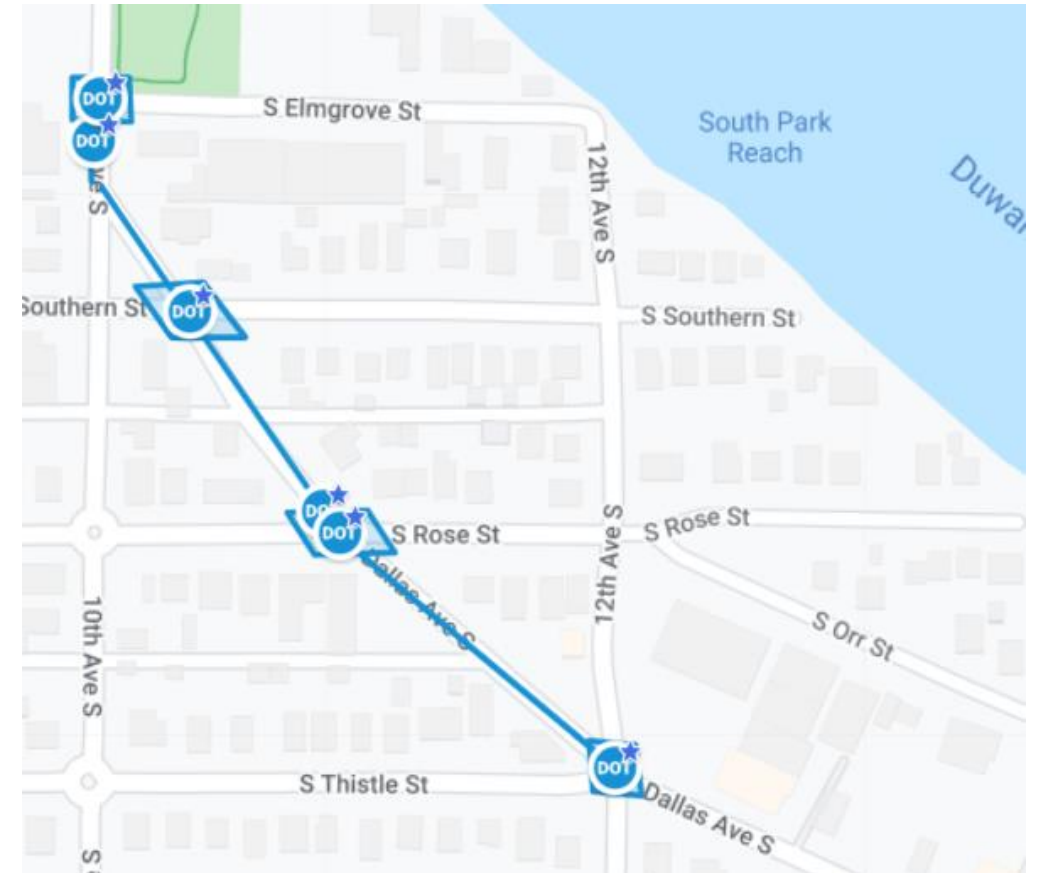
2022 SSRP Work Plan

Example Sidewalk Repair Projects

- Dallas Ave S (10th Ave S to 12th Ave S)
- Beacon Ave S (various locations)
- Aurora Ave N (N 80th to Northgate Way)
- Rainier Ave S & 25th Ave S

Beveling Grids

- West Seattle
- Int'l District
- Little Saigon



Questions?

jinny.green@seattle.gov | (206) 679-0169

www.seattle.gov/transportation/sidewalk-repair

Report Sidewalk Issues: 206-684-ROAD or use Find it, Fix It app

www.seattle.gov/transportation

