

Burke-Gilman Trail Missing Link Project



The Levy to
MOVE SEATTLE


Segment Workshop
September 28, 2017



Seattle
Department of
Transportation

PROJECT SEGMENTS



SEGMENT 1

NW 54TH ST & NW MARKET ST

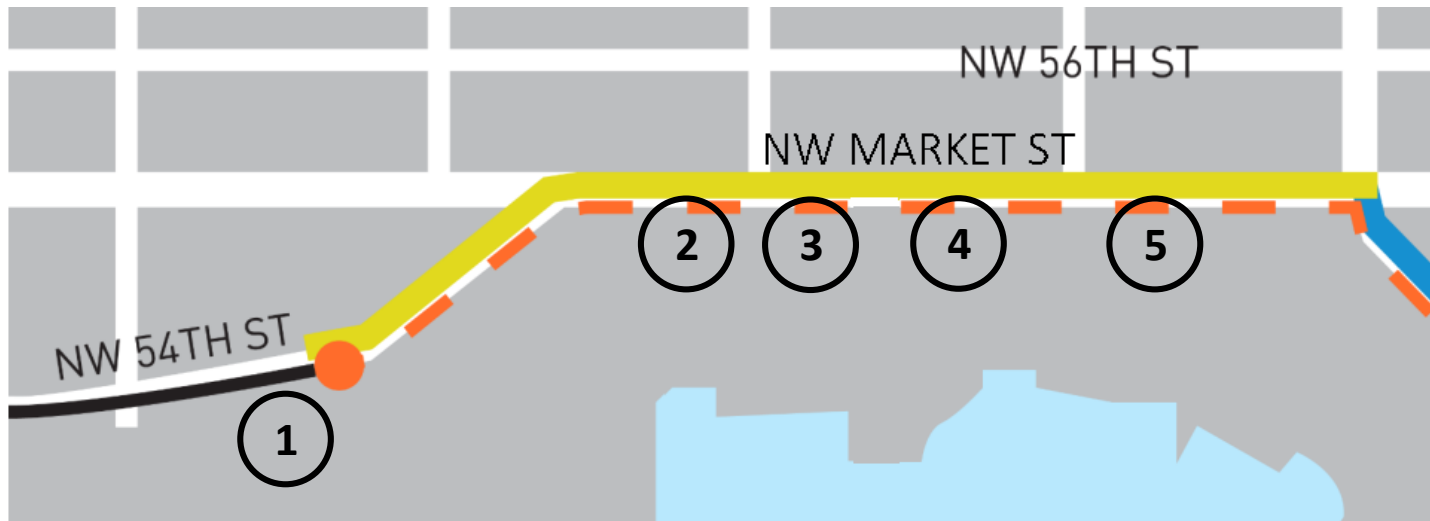
NW 54TH ST (EXISTING)



NW MARKET ST (EXISTING)

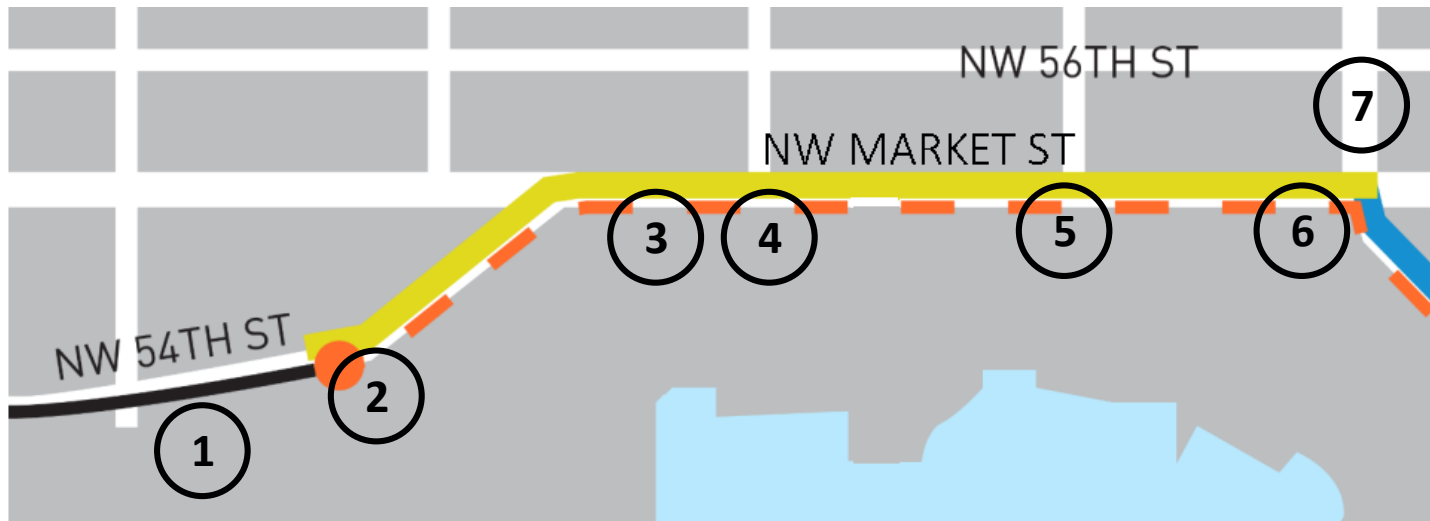


CHANGES BETWEEN EIS AND 30%



1. Maintain bus/metro layover zones along 54th St at the Ballard Locks
2. Relocated bus stop at Market St / 28th
3. Added westbound left turn lane with protected signal phase at Market / 28th
4. Coordinated trail design with Nordic Heritage Museum (video)
5. Substituted concrete for asphalt along NW Market St portion of the trail

CHANGES BETWEEN 30% AND 60% DESIGN



1. Restriped parking at the Ballard Locks and the Lockspot Café
2. Added mixing zone treatments at the Ballard Locks
3. Added low maintenance street trees at multiple locations
4. Improved connections to the Neighborhood Greenway at 28th / Market
5. Converted 26th to one-way south of Market St
6. Reconfigured 24th / Market intersection, modified sidewalk cafes, and added mixing zone
7. Extended bicycle lanes on 24th to Market St and added crossing treatments

SEGMENT 2
SHILSHOLE AVE NW

SHILSHOLE (EXISTING)

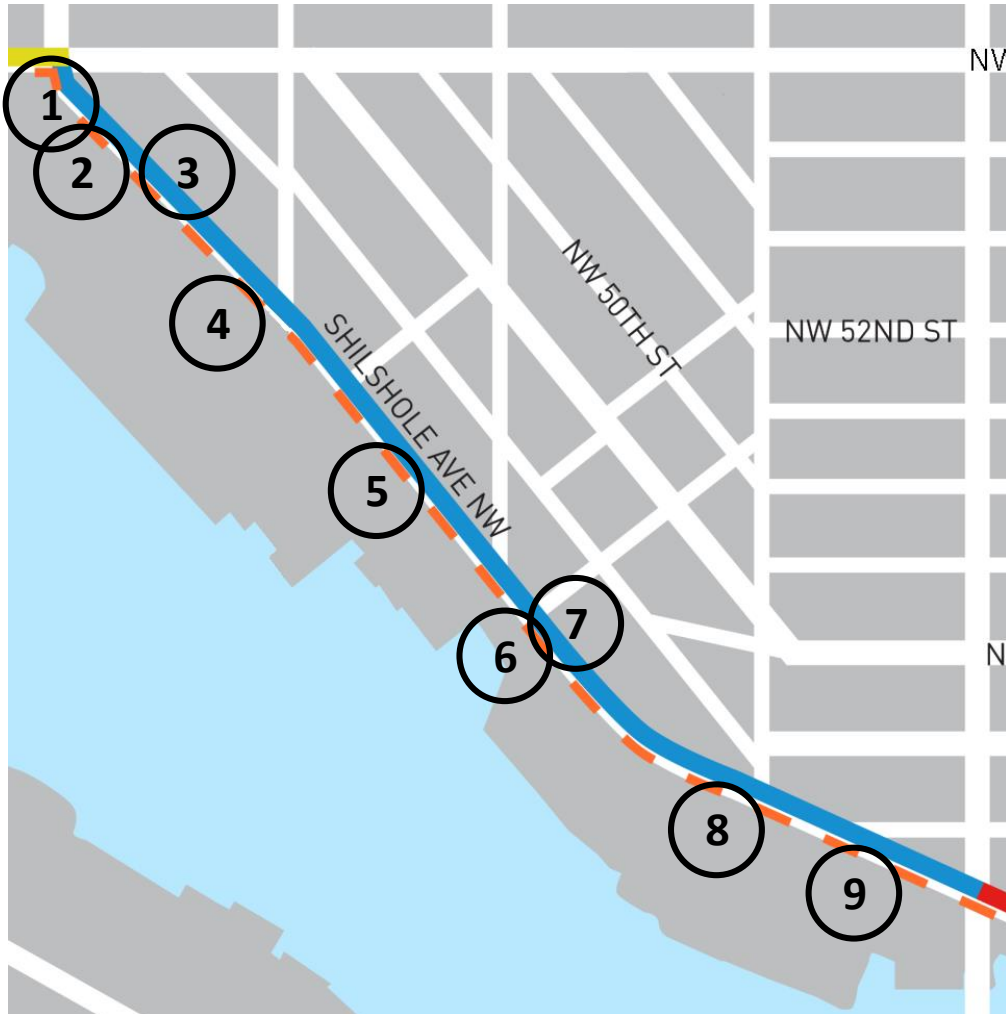


CHANGES BETWEEN EIS AND 30%



1. Extended 54th and converted 24th to a dead end
2. Extended left turn pocket on Shilshole
3. Added striped parking to the northside of Shilshole Ave NW
4. Added signal to Shilshole / Vernon
5. Incorporated LED signs at key locations along Shilshole
6. Maintained staging and parking space south of the trail on Shilshole Ave NW
7. Added left turn pocket at 17th and Shilshole
8. Avoided drainage impacts on nearby properties
9. Improved and widened rail crossing for cyclists

CHANGES BETWEEN 30% AND 60% DESIGN



1. Added landscape terrace at 24th / Shilshole
2. Added perpendicular parking along 24th
3. Added rapid flash beacons and crosswalk at 54th / Shilshole
4. Added low maintenance street trees at multiple locations
5. Added truck aprons for WB67 truck movements at multiple locations
6. Extended sidewalk and landscaping at 20th Street End
7. Installed crosswalks and a half-signal at Dock / Shilshole
8. Redesigned 17th / Shilshole for truck turning movements
9. Added lighting, fencing, and signage at trail/railroad crossing

SEGMENT 3
NW 45TH ST

NW 45TH ST (EXISTING)



CHANGES BETWEEN EIS AND 30%



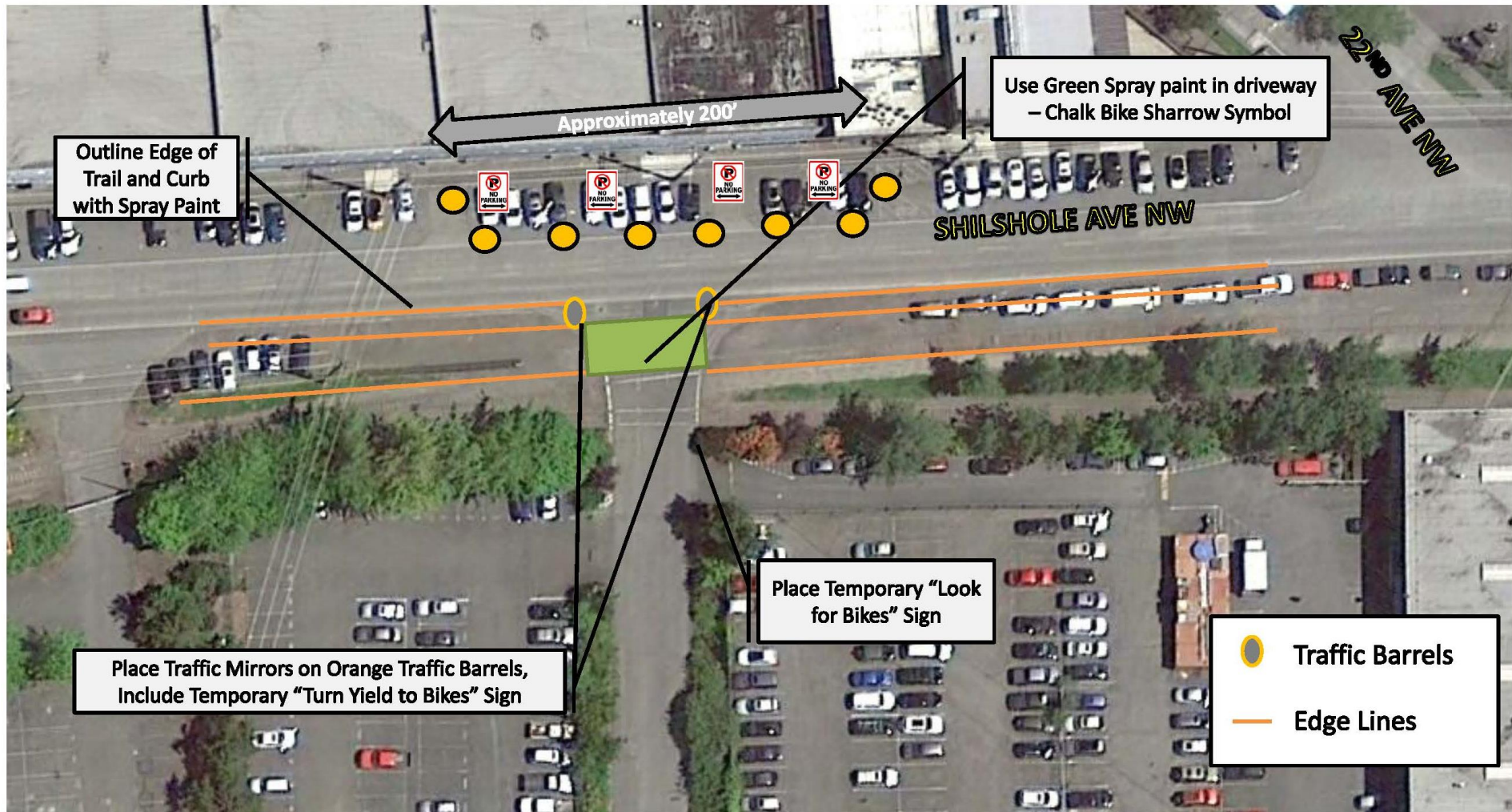
1. Increased lane width to 11 feet on 45th St to accommodate large trucks
2. Retained loading access for properties on the south side of 45th between 11th and 14th

CHANGES BETWEEN 30% AND 60%



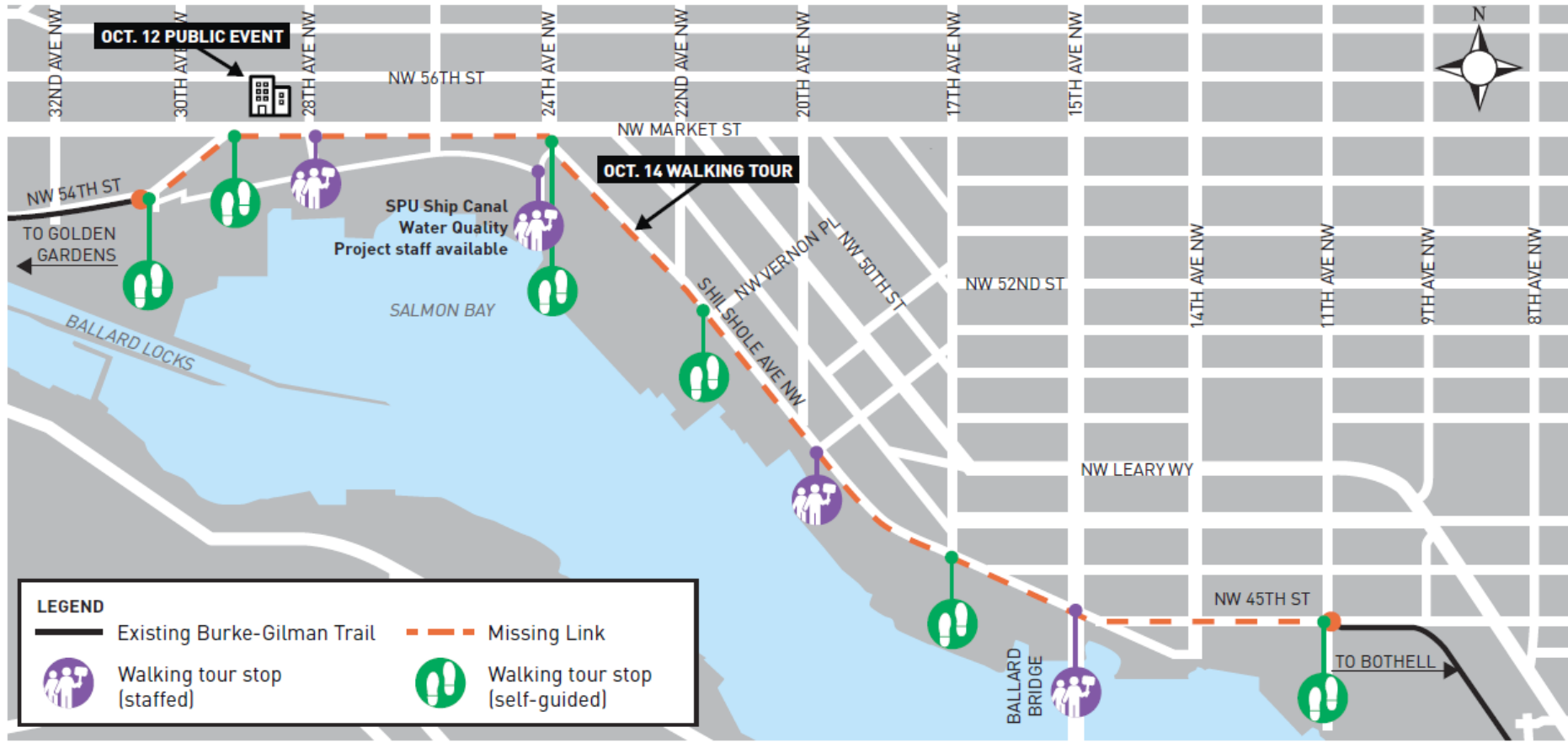
1. Connected the trail to the existing King County bike lane including new crosswalks, rapid flash beacons, and pedestrian lights
2. Restriped parking on the south side of 45th between 11th and 14th
3. Coordinated with Ballard Blocks 2 project
4. Added low maintenance street trees at multiple locations
5. Coordinated with SPU Ship Canal Water Quality Project

October 2 – Field Test



October 12 – Public Event

October 14 – Self-guided Walking Tour



Thank you!

`louisa.galassini@seattle.gov` | (206) 615-0185

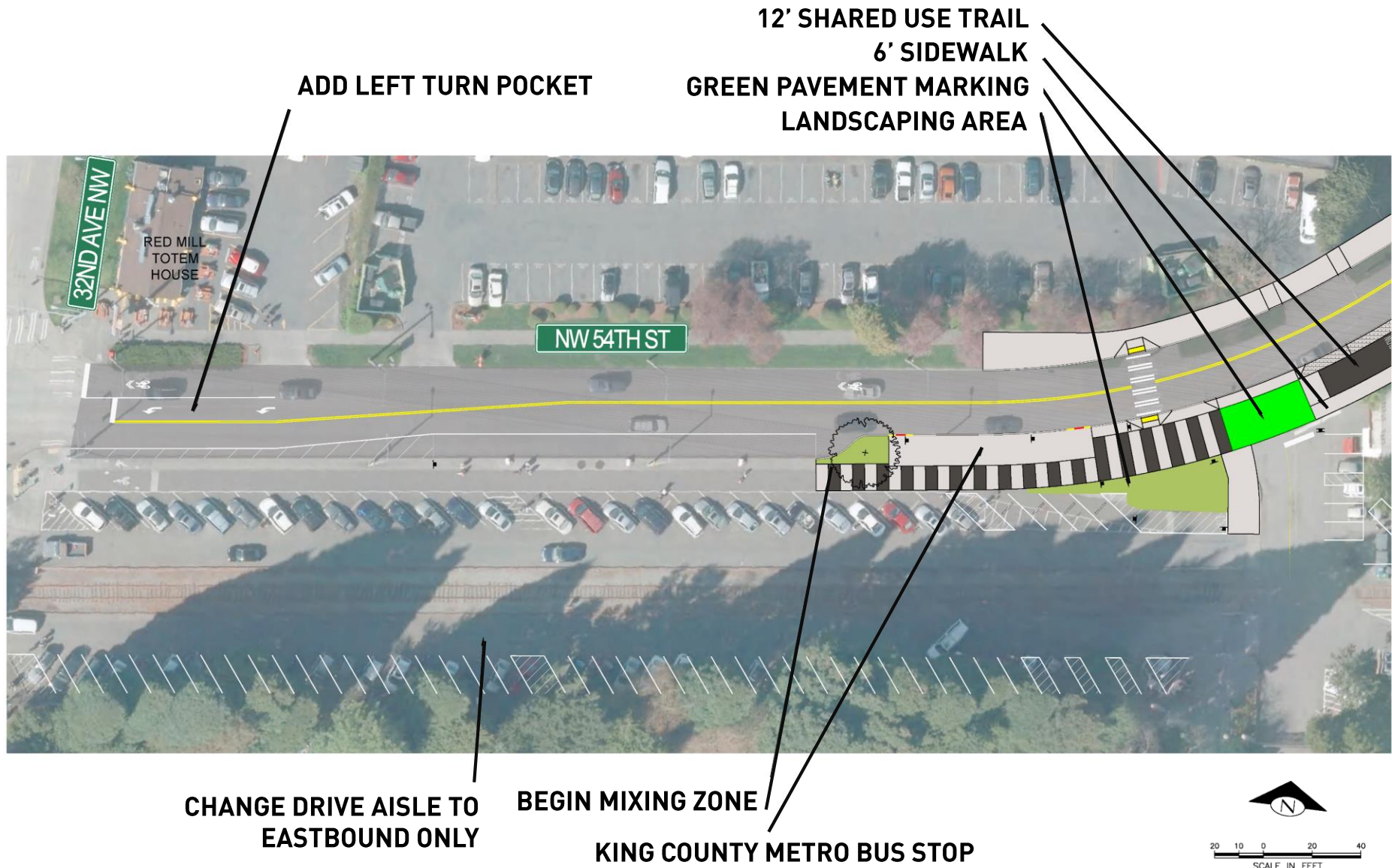
`www.seattle.gov/transportation/BGT_MissingLink.htm`

`www.seattle.gov/transportation`



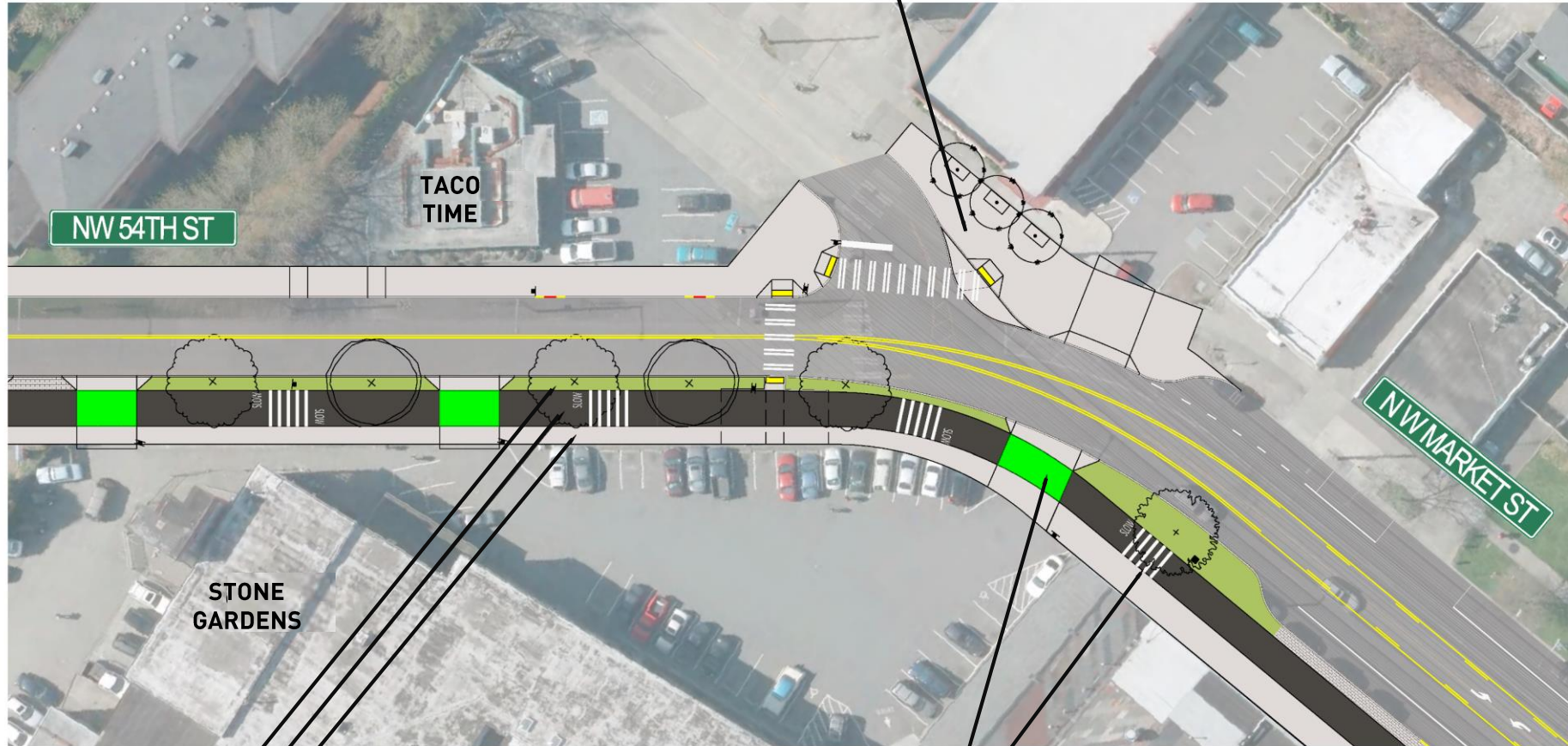
Reference

Ballard Locks



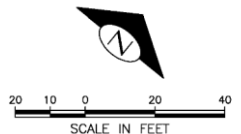
Market / 54th

NEW CURB EXTENSION AND
MOUNTABLE TRUCK APRON



5' STREET BUFFER
12' SHARED USE TRAIL
6' SIDEWALK

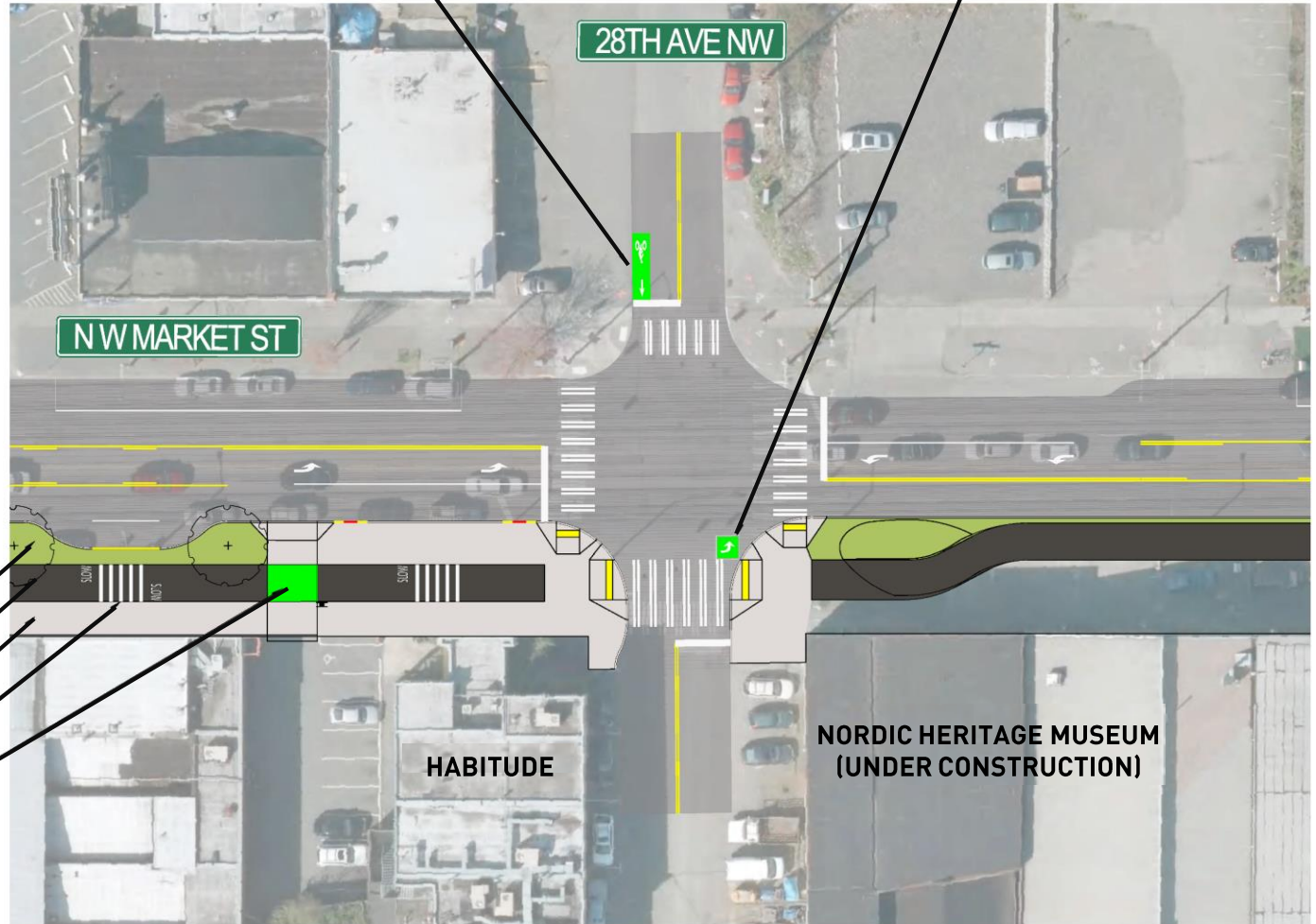
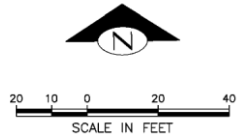
GREEN PAVEMENT MARKING
TRAIL MARKINGS



Market / 28th

CURB-SIDE PUSH BUTTON AND GREEN BIKE LANE FOR CONNECTION TO 28TH AVE NW NEIGHBORHOOD GREENWAY

BICYCLE LEFT TURN QUEUE BOX FOR CONNECTION TO 28TH AVE NW NEIGHBORHOOD GREENWAY



5' STREET BUFFER

12' SHARED USE TRAIL

10' SIDEWALK

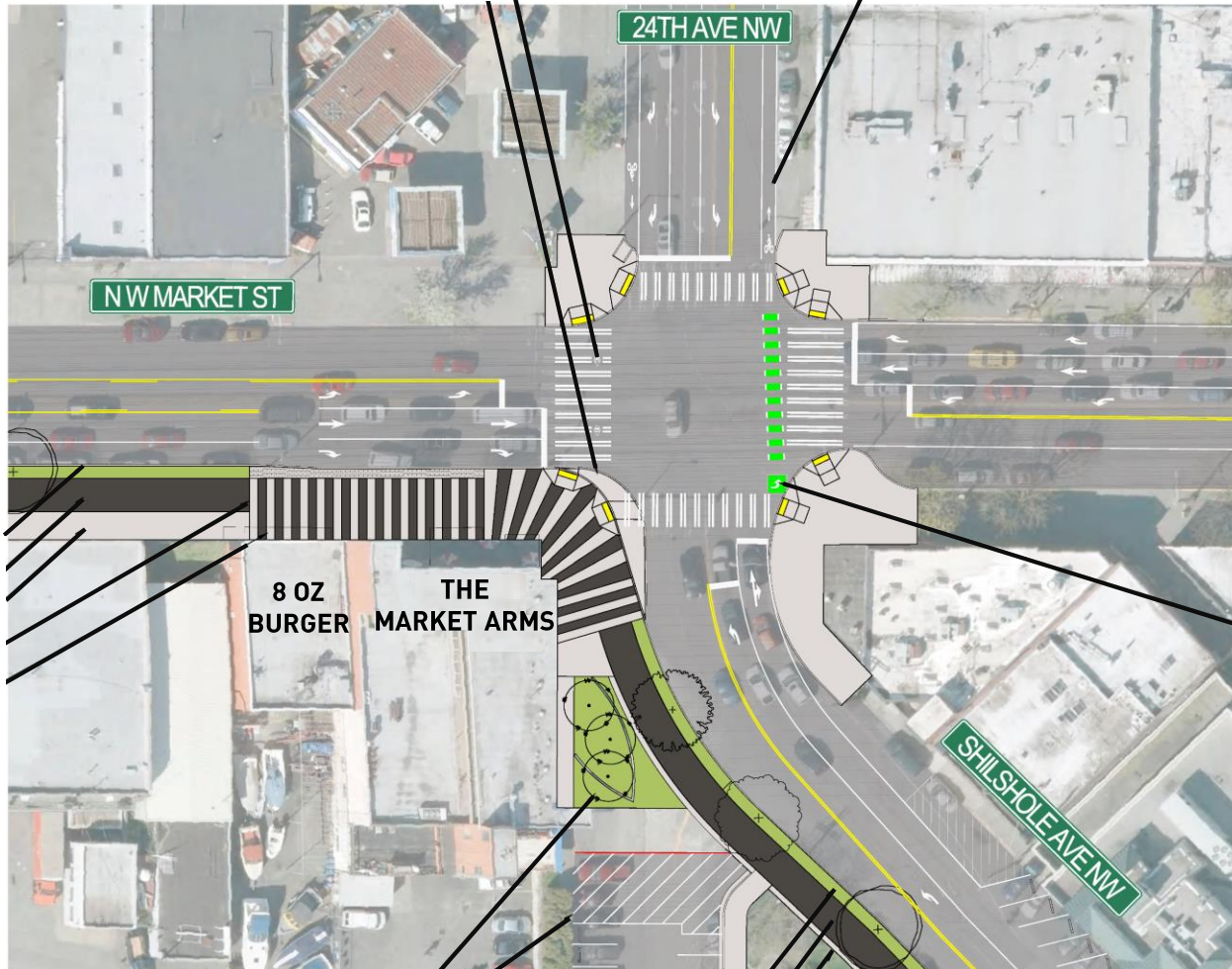
TRAIL MARKINGS

GREEN PAVEMENT MARKINGS

Market / 24th

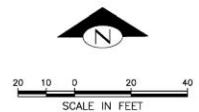
TRAIL CONNECTIONS
MOUNTABLE TRUCK APRON

EXTENDED BIKE LANES

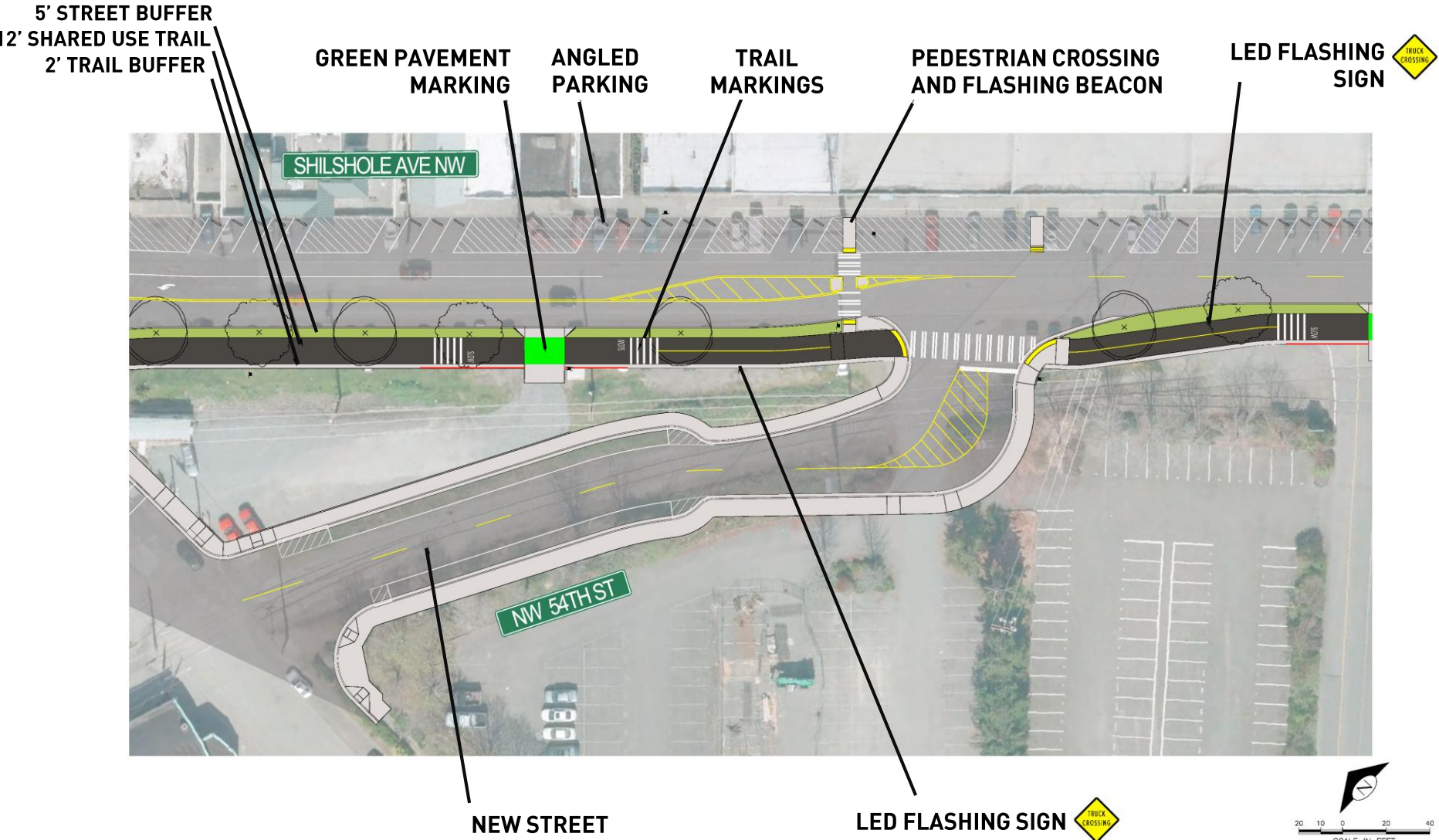


BICYCLE LEFT TURN
QUEUE BOX

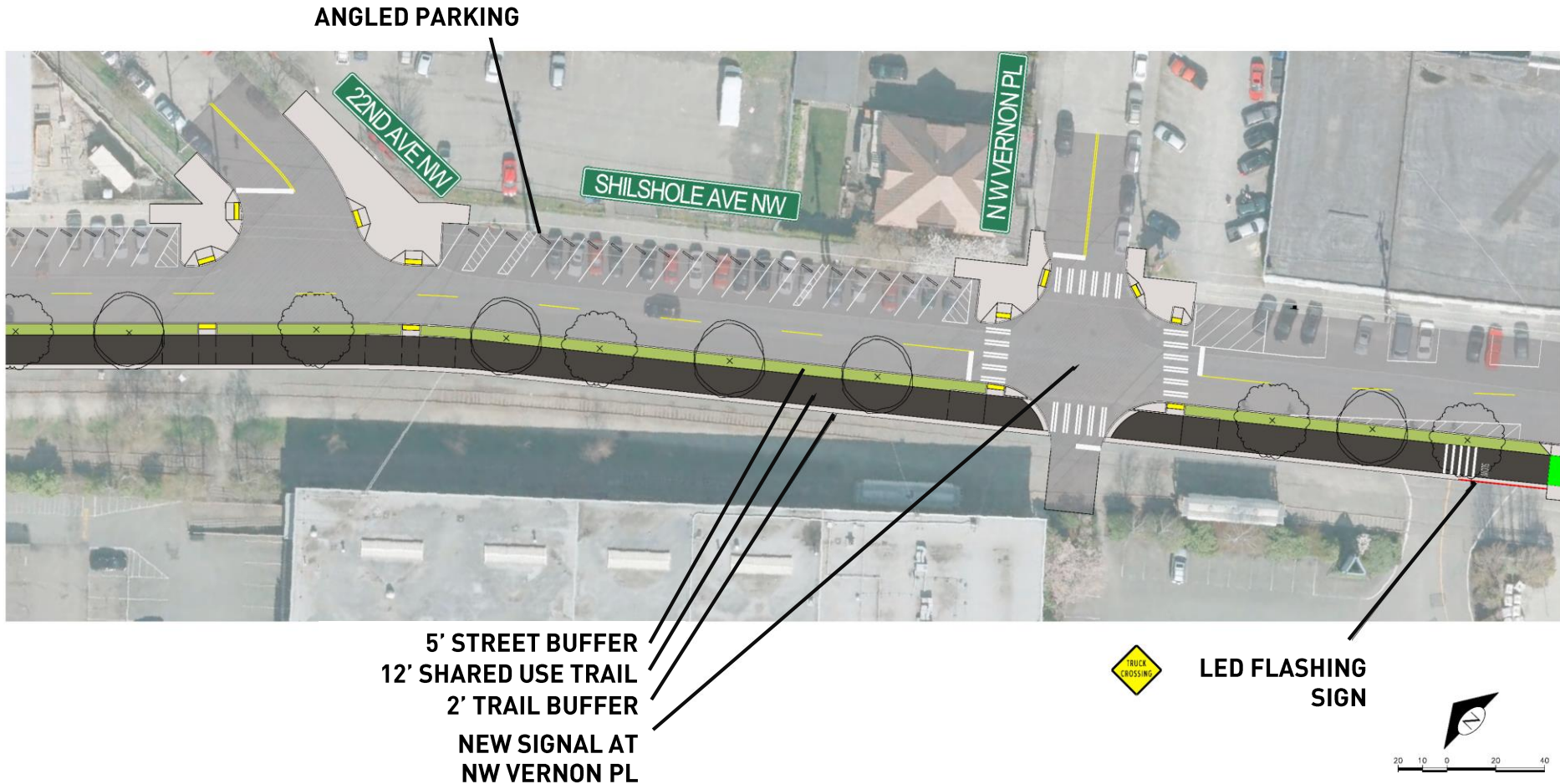
LANDSCAPED AREA
VEHICLE TURN-AROUND AREA
5' STREET BUFFER
12' SHARED USE TRAIL
2' TRAIL BUFFER



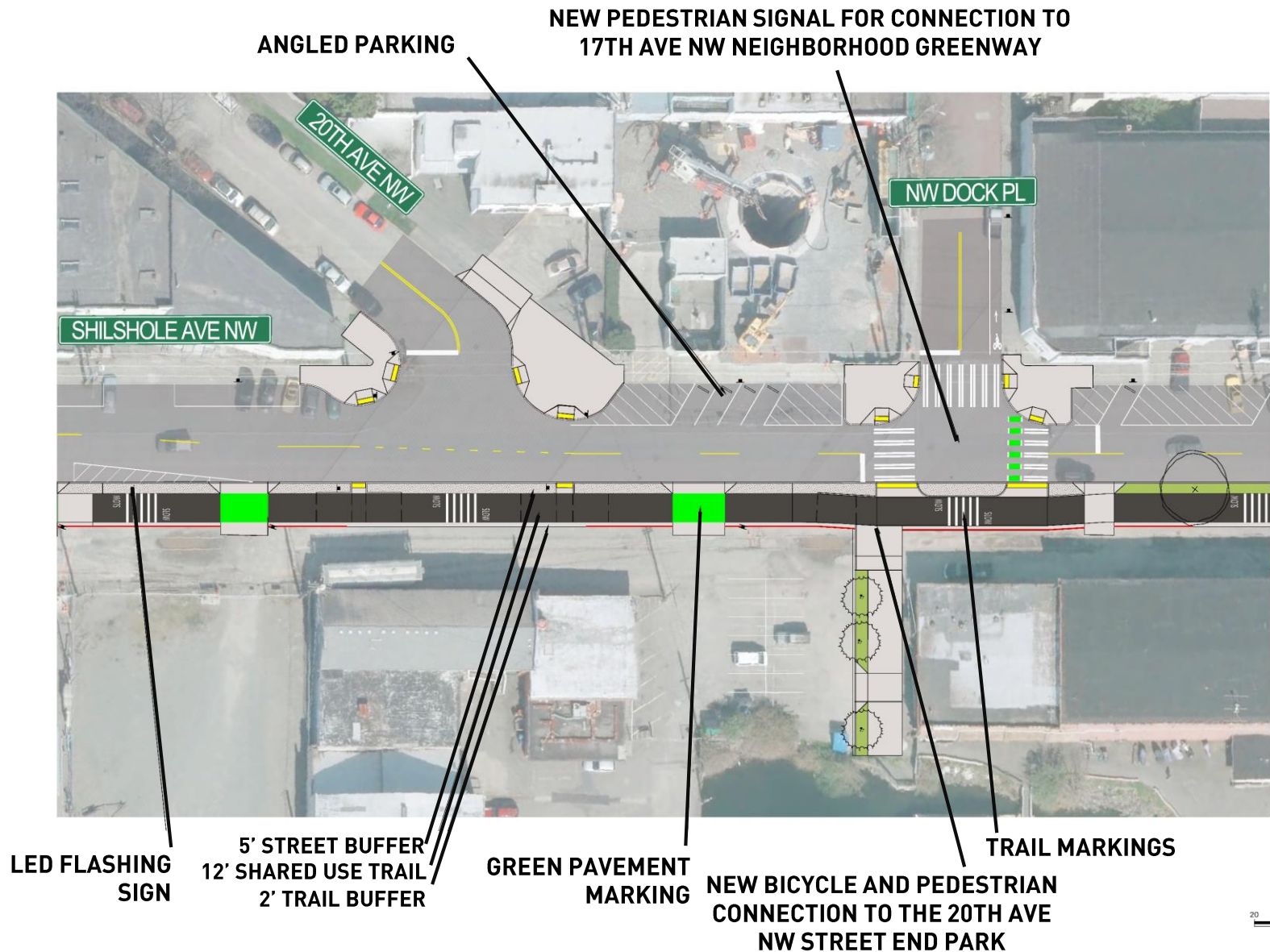
Shilshole / 54th



Shilshole / Vernon



Shilshole / Dock



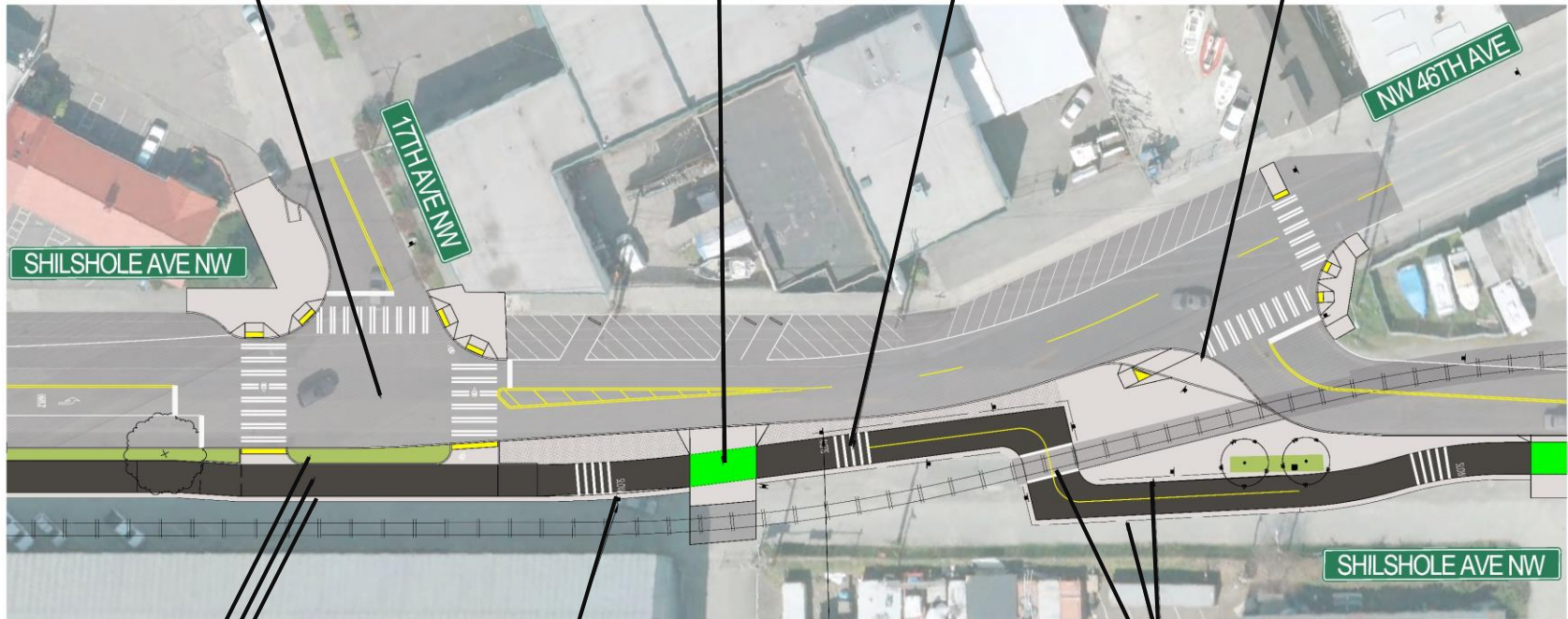
Shilshole / 17th / 46th

**NEW TRAFFIC SIGNAL
AT 17TH AVE NW**

**GREEN PAVEMENT
MARKING**

TRAIL MARKINGS

MOUNTABLE TRUCK APRON



**5' STREET BUFFER
12' SHARED USE TRAIL
2' TRAIL BUFFER**

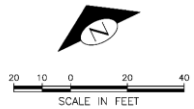


LED FLASHING SIGN

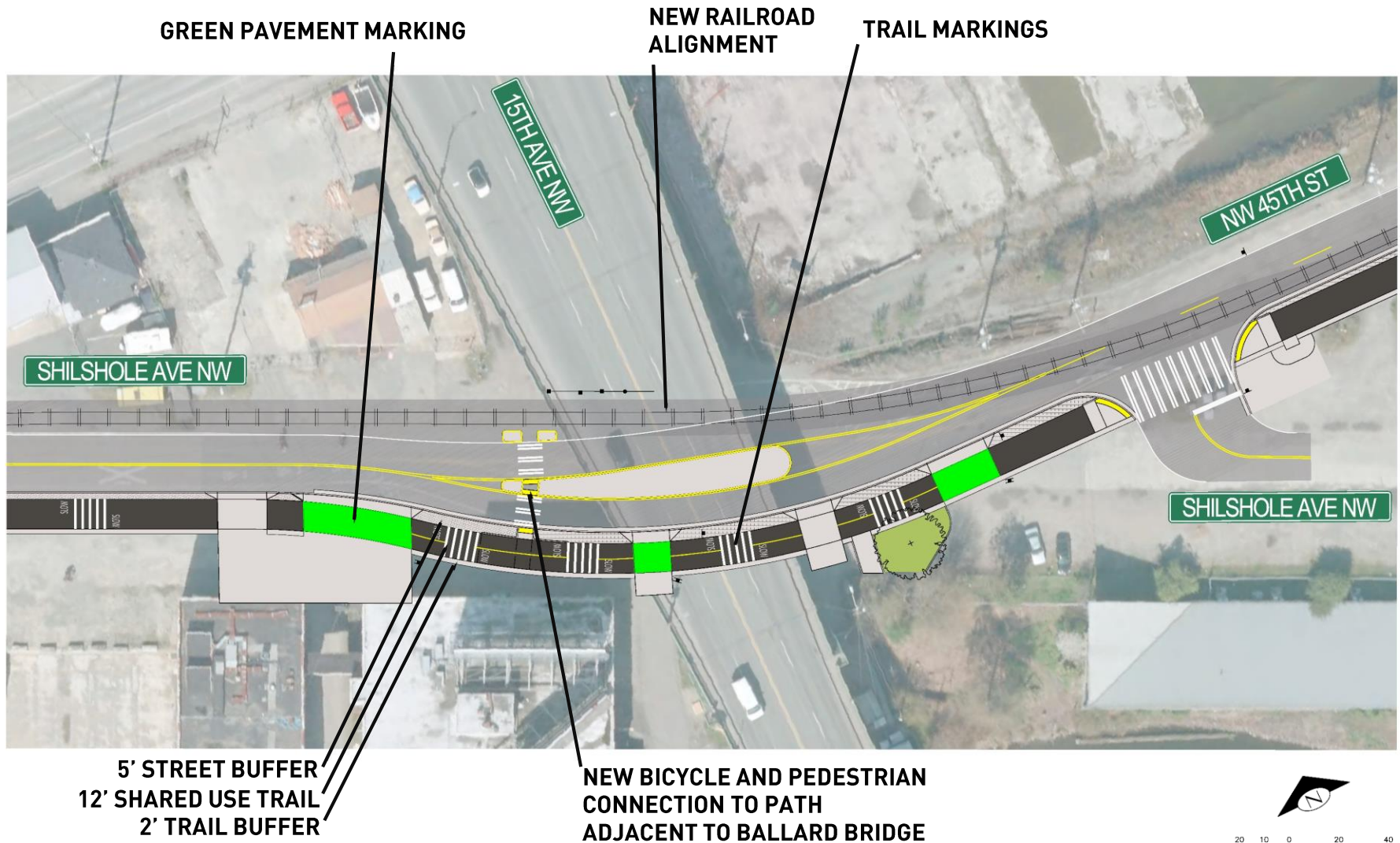
LED FLASHING SIGN



**FENCING ALONG RAILROAD
NEW RAILROAD ALIGNMENT
AND TRAIL CROSSING**



Ballard Bridge



45th / 11th

GREEN PAVEMENT MARKING

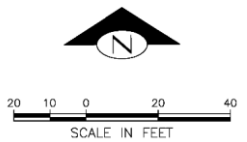
TRAIL MARKINGS

NW 45TH ST

11TH AVENUE NW

2' STREET BUFFER
12' SHARED USE TRAIL
2' TRAIL BUFFER

CONNECTION TO
EXISTING TRAIL



Signals



Bike/Ped Connections



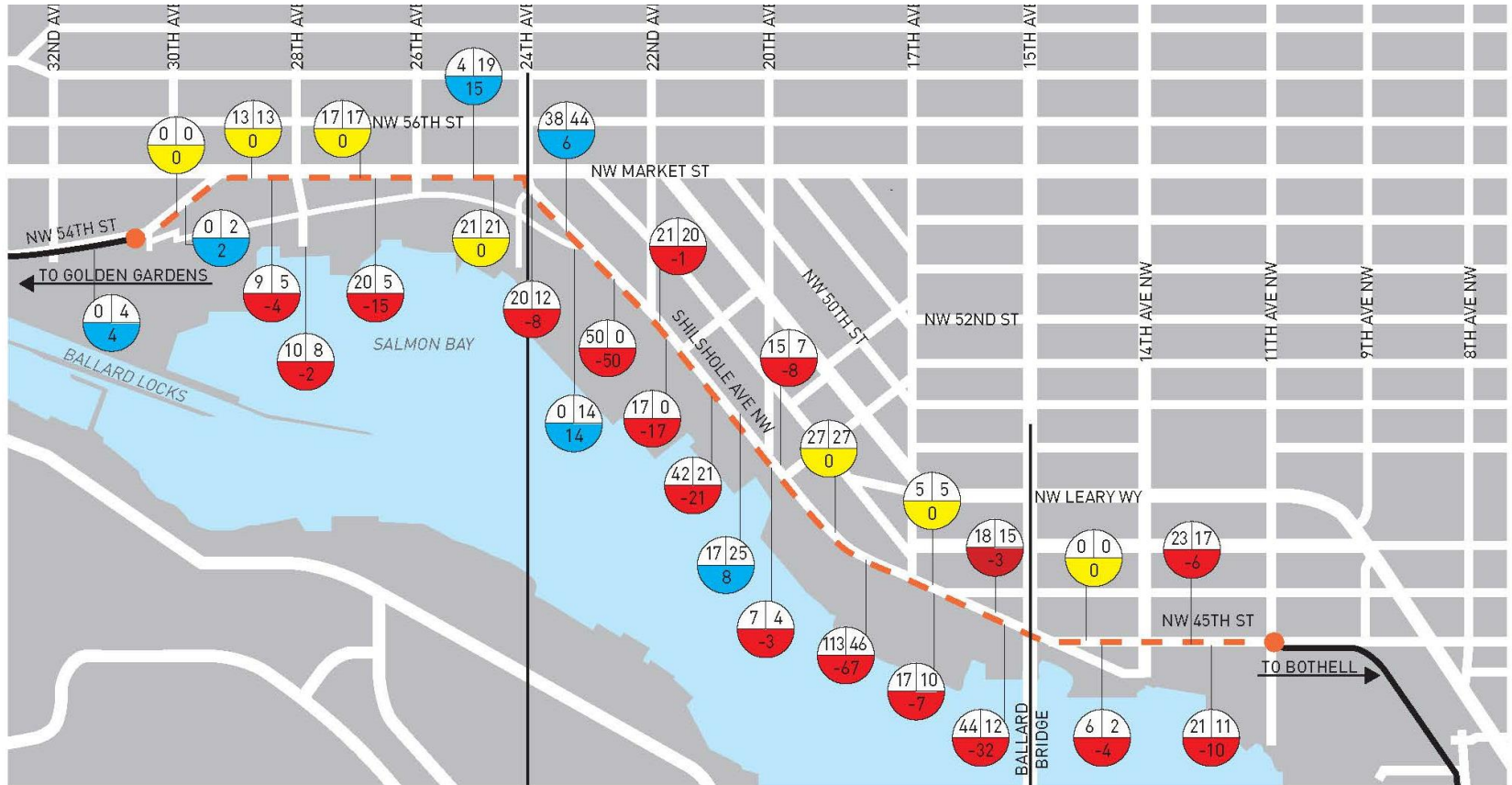
Places of Interest



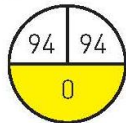
Trees



Parking

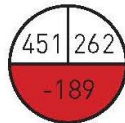


SEGMENT 1



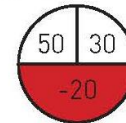
Parking Spaces		
Existing	30% design change	60% design change
94	+7	0

SEGMENT 2



Parking Spaces		
Existing	30% design change	60% design change
451	-143	-189

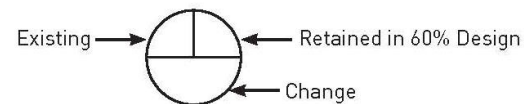
SEGMENT 3



Parking Spaces		
Existing	30% design change	60% design change
50	-22	-20

Retained Parking Spaces Corridor-Wide		
Existing	Retained in 30% design	Retained in 60% design
595	437	386

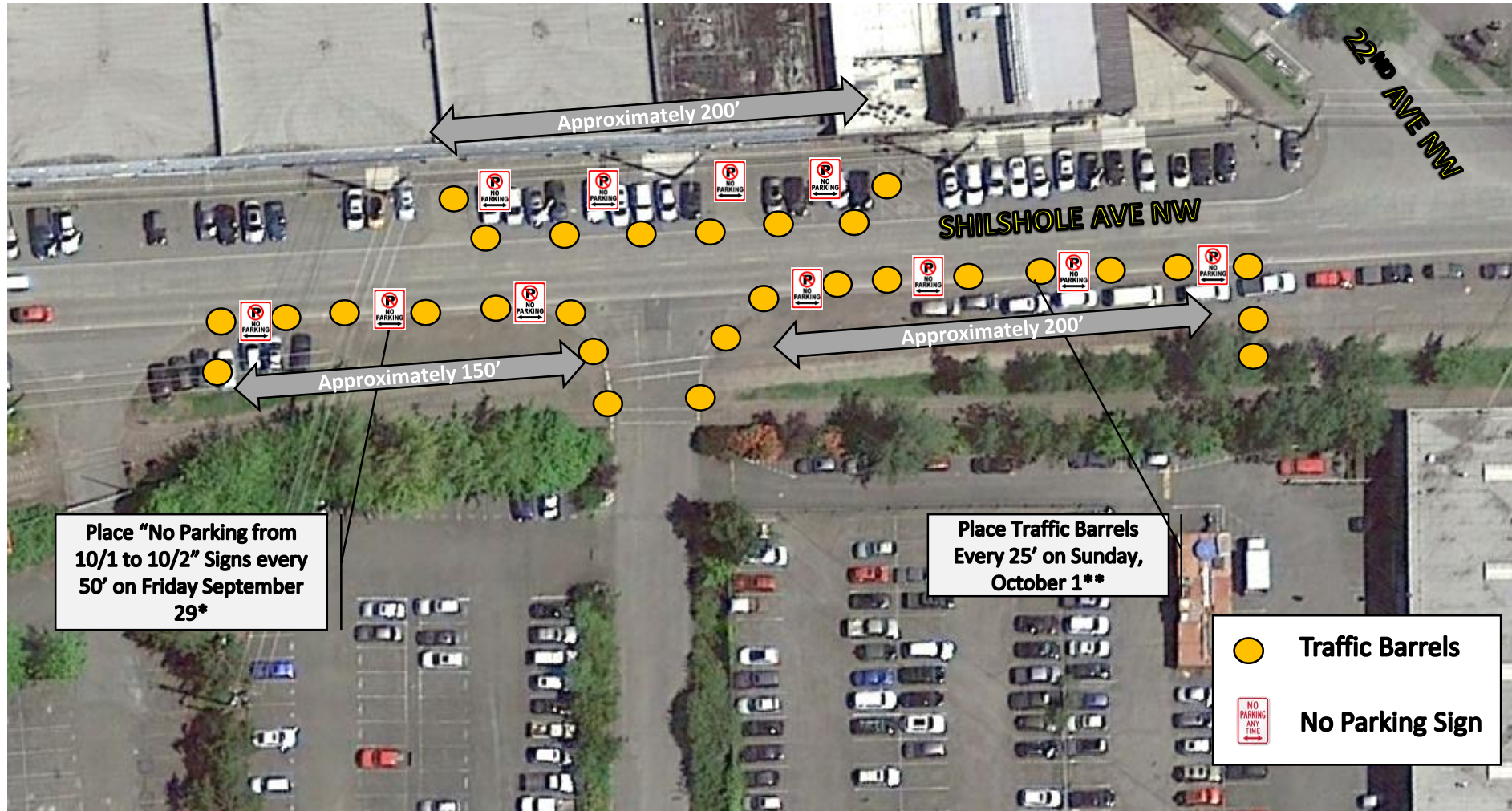
KEY



■ = loss
■ = no change
■ = gain

Site Preparation

Sept 29 – Oct 2 (AM)



*Place temporary No Parking Signs on 9/29, restricting parking on 10/1-10/2

**Place Traffic Barrels out on Sunday (10/1) or Monday Morning (10/2)

Demonstration Construction

Oct 2 (PM)

